

FM558 GF/FM558 LL

FORESTRY MACHINE



Engine Model
Net Power – ISO 9249
Engine Power – ISO 14396

Cat® C7.1
222.5 kW (298 hp)
225.1 kW (302 hp)



FM558 GF/ FM558 LL

FORESTRY MACHINE

In its size class, there's no better machine for moving timber than the next generation Cat® FM558. The machine comes with the industry's most advanced safety and comfort features to make your log loading and general forestry work more productive and enjoyable.



GENERAL FORESTRY



LOG LOADER

BEST-IN-CLASS CAB COMFORT

Sites where the FM558 typically work are rugged and challenging. That's why it's important that the cab keeps the operator comfortable and protected from fatigue, stresses, sounds and outside temperatures.

INCREASED POWER AND EFFICIENCY

Easily move heavy timber with 25% more engine power and 30% more swing power. Heavy lift mode gives an additional boost for larger logs. 15% more travel power gets you to work faster than ever.

REDUCED MAINTENANCE COSTS

The FM558's extended and synchronized service intervals mean you'll be able to spend more time working and up to 15% less in maintenance costs than the previous model.

LATEST FEATURES



Cab Monitor Improvements

- Continuously improved user interface allows intuitive navigation, minimizing performance interruption with the easy-to-use touchscreen menu.
 1. Identify apps quickly with a grid list view, abbreviated app names, and categorized menu options.
 2. A notification center keeps important information visible to the operator and displays messages without shrinking the camera view.
 3. Color-coded notifications set critical messages apart from the rest.
 4. Use the in-monitor QR code to learn about machine and technology features through a full suite of "how-to" videos.
- Enhance visibility to make service work easier and safer with optional inspection lighting.
- Standard integrated vehicle health management system alerts operators with service guidance and parts needed to enhance uptime.

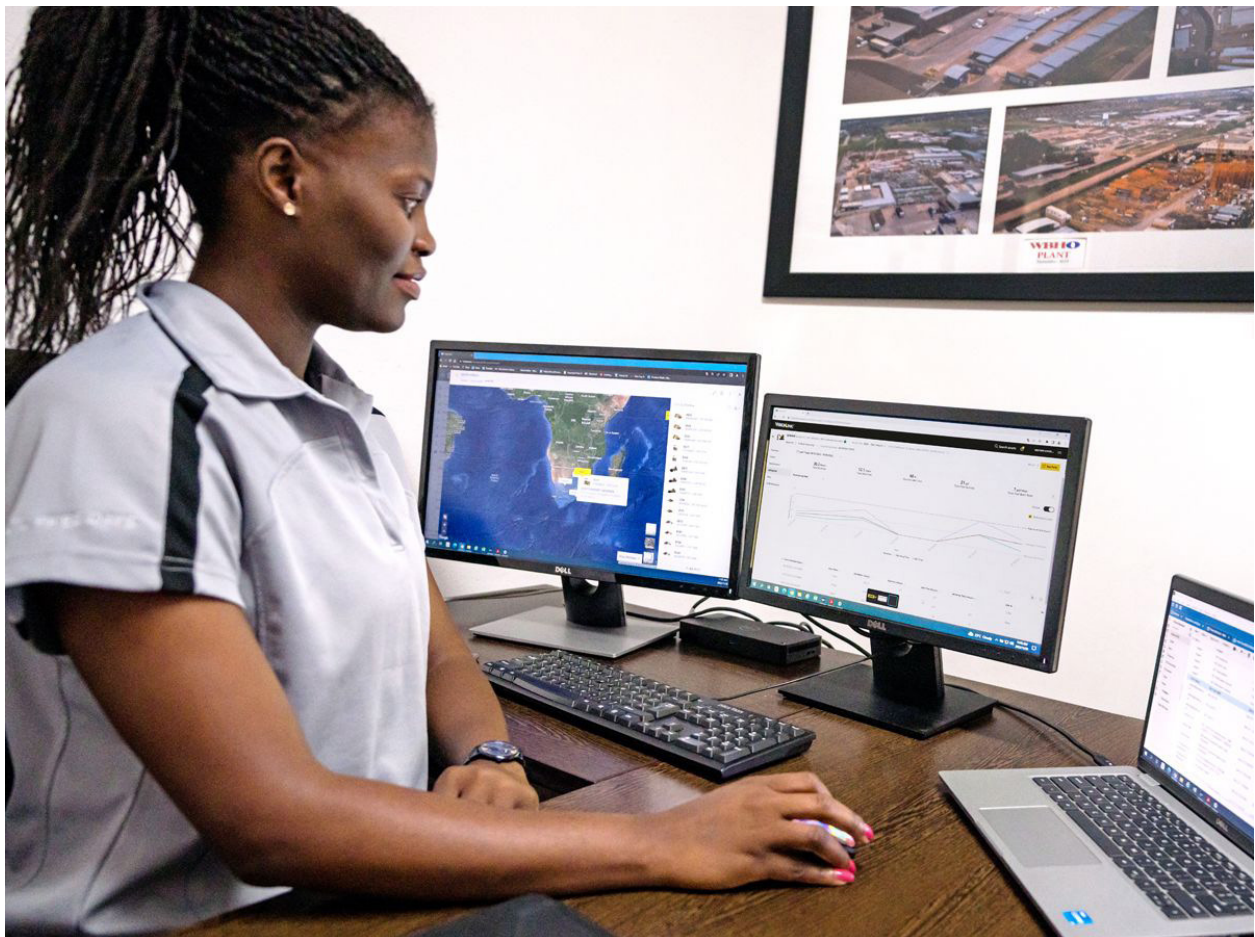
Build Number: 07B



TAKE THE GUESSWORK OUT OF MANAGING YOUR EQUIPMENT

- VisionLink® provides actionable data insights for all assets – regardless of fleet size or equipment manufacturer.* Review equipment data from your desktop or mobile device to maximize uptime and optimize assets. Dashboards provide information such as hours, miles, location, idle time, and fuel utilization. Make informed decisions that lower costs, simplify maintenance, and improve safety and security on your jobsite.
- VisionLink Productivity gathers and summarizes machine telematics and jobsite data from all your equipment – regardless of the manufacture.* View actionable information such as idle time, fuel burn, location, payload, load counts, total cycles, and more to improve machine efficiency, productivity, and utilization. Access data anywhere via a mobile, tablet, or desktop device – on or off the jobsite.
- Cat® Inspect is a mobile application that allows you to easily perform digital preventative maintenance (PM) checks, inspections, and daily walkarounds. Inspections can easily be integrated with other Cat data systems like VisionLink so you can keep a close eye on your fleet.
- Remote Troubleshoot is a mobile application that allows your Cat dealer to perform diagnostic testing on your connected machine remotely to help resolve issues quickly and with less downtime.
- Remote Flash is a mobile application that allows you to update onboard software without a technician being present, allowing you to initiate software updates when convenient, increasing your overall operating efficiency.
- The Cat PL161 attachment locator allows you to track attachments across all worksites, reduce the number of lost attachments, and plan for attachment maintenance and replacement. The work tool recognition** feature automatically adjusts machine settings based on the selected tool.

**Data field availability can vary by equipment manufacturer.
**Recognition feature available on select excavator models.
Consult your Cat dealer for details.*



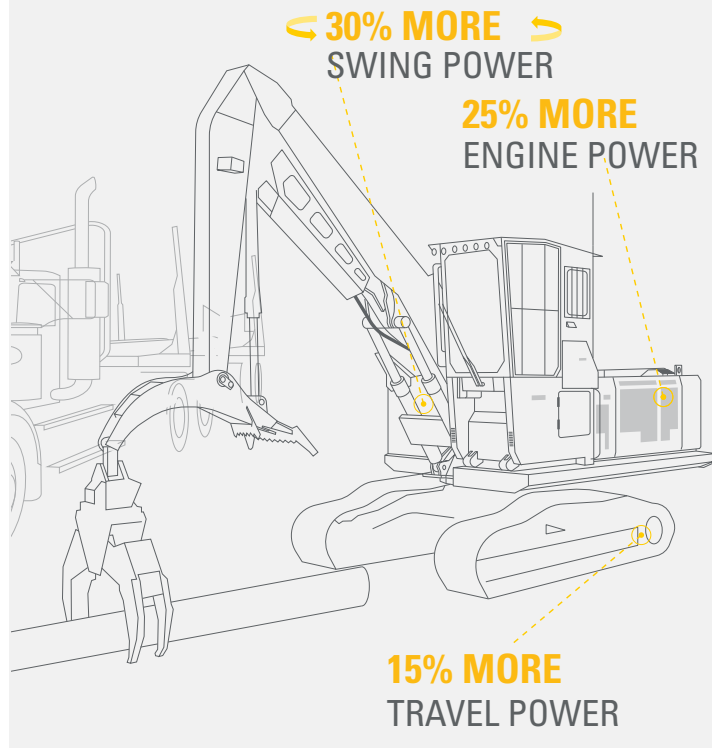
SUPERIOR PERFORMANCE



- The Cat C7.1 engine offers up to 25% more power* and can run on biodiesel and renewable fuels.
- Smart mode helps reduce fuel consumption by automatically matching engine and hydraulic power to working conditions.
- Pick and place logs with precision and power with the all-new electrohydraulic control system.
- Heavy lift mode with up to 30% more swing torque* helps you confidently move big logs.
- Cover ground faster than ever with up to 15% more travel power.*
- Auxiliary hydraulic options let you use Cat grapples and various other attachments.
- Work in extreme environments with standard high-ambient capability of 52° C (126° F) and cold start capability of -32° C (-25° F).

**All percentages are compared to the 2021 model year 558.*

GET MORE WORK DONE



UNMATCHED OPERATOR COMFORT

- Operators can choose the rear or side cab entry with up to 25% more space and a tilt-up console.*
- The dual HVAC system keeps operators comfortable in cold and warm weather.
- A wider heated and cooled air-suspension seat makes year-round work more pleasant.
- All controls are within easy reach to reduce twisting and turning and keep you focused on the work area.
- Cab risers — 165 mm (6.5") fixed or 1219 mm (48") hydraulic tilt — are available to meet your work needs.
- Special roof lining and window and door sealing reduce noise, making the interior as quiet as today's top work trucks.
- Stow your gear with in-cab storage beneath, behind the seat, and in the consoles.
- Use the standard radio's USB ports and Bluetooth® technology to connect personal devices and make hands-free calls.

****All percentages are compared to the 2021 model year 558.***



SIMPLE OPERATION



- Cat continues to improve user interface functionality for operators of all skill levels. The touchscreen monitor is an easy-to-use operating tool that presents the jobsite dashboard with an intuitive format.
- The Cat PL161 attachment locator is a Bluetooth device designed to let users know where their attachments are across all worksites, reduce the number of lost attachments, and plan for attachment maintenance and replacement. The PL161 integrates easily into VisionLink for full fleet management of machines and attachments from one smartphone or tablet dashboard to view location and tracking details.
- Productivity applications are displayed in grid view to read on the go, and touchscreen navigation is programmed to ensure job performance continues without any hold-ups.
- The keyless push-button engine start adds security by using operator ID codes to limit and track machine access. Codes can be entered manually or via an optional Bluetooth key fob.
- Navigate quickly on the standard high-resolution 254 mm (10 in) touchscreen monitor.
- Make moving the excavator much easier with optional Cat Stick Steer. Push a button and use one hand to travel and turn instead of both hands or feet on levers or pedals.
- Not sure how a function works or how to maintain the machine? Always have the operator's manual at your fingertips in the touchscreen monitor.
- Optional auxiliary relay powers on and turns off CB radios and other attachments without you taking your hands off the joysticks.



VERSATILE CONFIGURATIONS

General Forestry

1. The General Forestry model is ideal for road work, grappling, processing, and delimiting.
2. With a reach boom and quick coupler, you can equip the FM548 with a processor, bucket, thumb, mulcher, and other attachments to get work done quickly and efficiently.
3. A frontless option allows you to customize the machine to fit your applications.

Log Loader

1. The log loader configuration is ideal for truck loading, Butt-n-Top loading, power clam applications and millyard work.
 2. An under-mounted heel cylinder provides maximum force for shovel logging with a Cat grapple. A variable displacement pump delivers high-flow rotating capability for heel and log grapples and Power Clam and Butt-n-Top grapples.
 3. An overmounted heel cylinder provides maximum clearance to load trucks and increases lift height for millyard applications.
- Rugged, reliable, simple-to-service Cat forestry grapples range in size from 1322 mm (52") to 1524 mm (60").



EASY MAINTENANCE



- Boost productivity with proactive service reminders. The Integrated Vehicle Health Management system alerts the operator with step-by-step service guidance and the parts needed so you don't experience unnecessary downtime.
- Expect up to 15%* less maintenance cost than the previous model. (Savings calculated over 12,000 machine hours.)
- The engine's regeneration system functions automatically with no operator input or interruption to work.
- Using Cat genuine oil and filters and doing typical Scheduled Oil Sampling (S-O-SSM) monitoring will double the current service interval to 1,000 hours, giving you greater uptime to do more work.
- S-O-S ports simplify maintenance and allow for quick, easy extraction of fluid samples for analysis.
- The diesel particulate filter requires no maintenance.
- Replace fuel filters at 1,000 hours – twice the interval from the previous filters.
- The latest hydraulic oil filter provides improved filtration performance, anti-drain valves to keep oil clean when the filter is replaced, and longer life with a 3,000-hour replacement interval – 50% longer than previous filter designs.
- The high-efficiency cooling fan runs only when needed; program intervals so the fan automatically reverses to keep cores clean without interrupting your work.
- Standard Product Link™ provides location, machine hours, fuel usage, productivity, idle time, diagnostic codes, and other machine data on demand through VisionLink online interface, helping you improve jobsite efficiency with lower operating costs.
- Remote Troubleshoot** connects you to a dealer service pro to help solve your problem and quickly get you to work.
- Remote Flash** works around your schedule to ensure your machine's software is up to date for optimal performance.

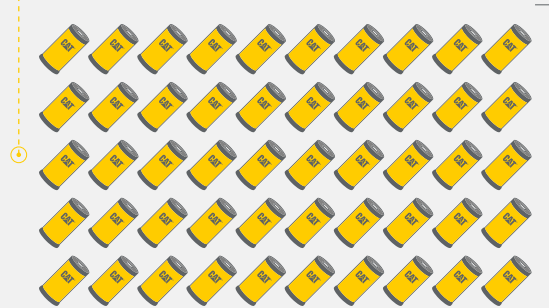
*All percentages compared to 2021 model year 558.

**Requires cell coverage.



SAVE MONEY

THE NEXT GENERATION 558 CONSUMES
UP TO 50 FEWER FILTERS*



FEWER FILTERS,
LONGER INTERVALS,
LESS COST,
MORE PRODUCTIVITY

*COMPARED TO PREVIOUS 558 OVER 12,000 HOURS

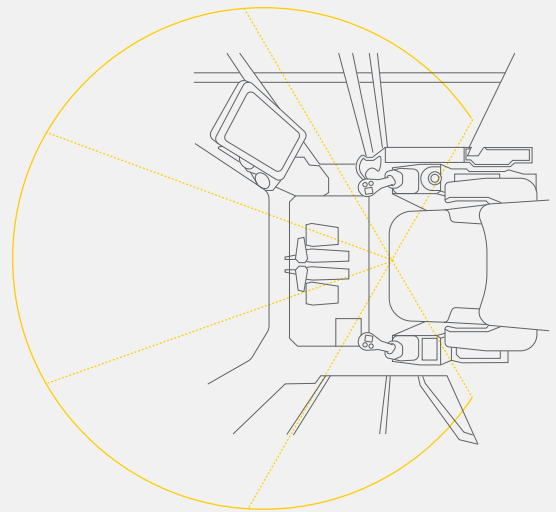
SAFETY



- The cab meets applicable industry standards for Rollover Protective Structure (ROPS)/Falling Object Protective Structure (FOPS)/Operator Protective Guards (OPG) and protects the operator inside the cab.
- Access most routine maintenance points at ground level.
- The right-hand service platform design provides easy, safe, and quick access to the upper service platform; the service platform steps use an anti-skid punch plate to prevent slipping.
- Handrails are provided for easy access.
- Larger 32 mm (1.25") polycarbonate front window, smaller cab pillars, and a flat engine hood improve visibility by up to 50%.
- Standard rearview camera enhances jobsite visibility; right-hand-sideview cameras are optional.
- The monitor's slope and grade indicator tell you the machine's position to help optimize its performance.
- A signaling/warning horn and travel alarm enhance jobsite safety.
- Make service work easier and safer with optional inspection lighting. With the flip of a switch, lights will illuminate the engine, pump, battery, and radiator compartments to enhance visibility.

****All percentages are compared to the 2021 model year 558.***

50% GREATER VISIBILITY*



*CAT NEXT GENERATION 558 COMPARED TO PREVIOUS 558

- The Cat C7.1 engine meets U.S. EPA Tier 4 Final and EU Stage V emission standards.
- Cat diesel engines are required to use ULSD (ultra-low sulfur diesel fuel with 15 ppm of sulfur or less) or ULSD blended with the following lower-carbon intensity fuels** up to: 20% biodiesel FAME (fatty acid methyl ester)* or 100% renewable diesel, HVO (hydrogenated vegetable oil) and GTL (gas-to-liquid) fuels. Refer to guidelines for successful application. Please consult your Cat dealer or “Caterpillar Machine Fluids Recommendations” (SEBU6250) for details.
- Auto Engine Speed Control reduces unnecessary fuel burn and greenhouse gas emissions by allowing the engine to automatically go into idle mode when the machine is not working.
- Extended maintenance intervals reduce downtime and decrease the amount of fluid and filters that are replaced over the machine life.
- Cat VisionLink displays the CO₂ emissions for monitored assets, calculated by fuel type for the Runtime Fuel Burned each day in a selected date range.
- Remote Flash minimizes downtime and maintenance time while keeping your asset running at maximum efficiency. Alerts for machine updates are sent virtually from your Cat dealer, and updates can be deployed without a dealer technician needing to be onsite.
- Remote Troubleshoot decreases maintenance time and keeps your machine running with maximum efficiency by allowing your Cat dealer to virtually test the machine while working. Once a problem is identified, a technician can fix it the first time, saving time and money.

****Engines with no aftertreatment devices can use higher blends, up to 100% biodiesel (for use of blends higher than 20% biodiesel, consult your Cat dealer).***

*****Tailpipe greenhouse gas emissions from lower-carbon intensity fuels are essentially the same as traditional fuels.***



INCREASE YOUR PRODUCTIVITY AND PROFIT

WITH CAT ATTACHMENTS

Easily expand the performance of your machine by utilizing any of the variety of Cat attachments. Each Cat attachment is designed to fit the weight and horsepower of the Cat machine for improved performance, safety, and stability.



GRAPPLES

Cat log loading grapples are made with high-strength steel for maximum performance. They are ideal for picking and sorting, bunching and loading, and shoveling applications. Bolt-on access panels make them easier to service.



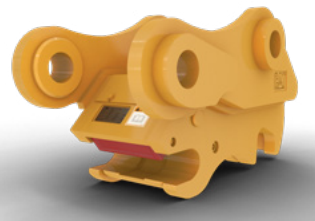
MULCHERS

Cat forestry mulchers make land clearing fast and safe. Staggered teeth quickly turn trees into mulch; a hydraulically controlled door lets the operator direct mulch flow to enhance jobsite safety.



BUCKETS

Cat buckets move material quickly and efficiently. Their unique design enables more efficient filling and better operator control, which improves overall productivity.



COUPLERS

Cat quick couplers allow you to change between tools in minutes, making the machine capable of doing a variety of money-making tasks.



ATTACHMENT TRACKING MADE EASY

The Cat PL161 attachment locator is a Bluetooth device that makes finding grapples, buckets, and other gear quick and easy. The excavator's onboard Bluetooth reader will locate the device automatically.

TECHNICAL SPECIFICATIONS

Engine

| | | |
|--------------------------------|---|-------------|
| Engine Model | Cat C7.1 | |
| Net Power – ISO 9249 | 222.5 kW | 298 hp |
| Engine Power – ISO 14396 | 225.1 kW | 302 hp |
| Net Power – ISO 9249 (DIN) | 303 hp (metric) | |
| Engine Power – ISO 14396 (DIN) | 306 hp (metric) | |
| Bore | 115 mm | 4.13 in |
| Stroke | 135 mm | 5.31 in |
| Displacement | 7.1 r/min | 433.3 r/min |
| Biodiesel Capability | B20 ¹ | |
| Emissions | Meets U.S. EPA Tier 4 Final, EU Stage V emission standards. | |

Net power advertised is the power available at the flywheel when the engine is equipped with fan, air intake system, exhaust system, and alternator with engine speed at 1,800 rpm. Advertised power is tested per the specified standard in effect at time of manufacture.

¹Cat diesel engines are required to use ULSD (ultra-low sulfur diesel fuel with 15 ppm of sulfur or less) or ULSD blended with the following lower-carbon intensity fuels** up to: 20% biodiesel FAME (fatty acid methyl ester)* or 100% renewable diesel, HVO (hydrotreated vegetable oil) and GTL (gas-to-liquid) fuels. Refer to guidelines for successful application. Please consult your Cat dealer or Caterpillar Machine Fluids Recommendations (SEBU6250) for details.

*Engines with no aftertreatment devices can use higher blends, up to 100% biodiesel (for use of blends higher than 20% biodiesel, consult your Cat dealer).

**Tailpipe greenhouse gas emissions from lower-carbon intensity fuels are essentially the same as traditional fuels.

Hydraulic System

| | | |
|--|------------|-------------|
| Main System – Maximum Flow | 538 L/min | 142 gal/min |
| Maximum Pressure – Equipment | 35 000 kPa | 5,076 psi |
| Maximum Pressure – Equipment – Lift Mode | 38 000 kPa | 5,511 psi |
| Maximum Pressure – Travel | 35 000 kPa | 5,076 psi |
| Maximum Pressure – Swing | 27 200 kPa | 3,945 psi |

Drive

| | | |
|----------------------|----------|------------|
| Maximum Drawbar Pull | 350 kN | 78,638 lbf |
| Maximum Travel Speed | 4.4 km/h | 2.8 mile/h |

Swing Mechanism

| | | |
|----------------------|-----------|---------------|
| Swing Speed | 7.4 r/min | |
| Maximum Swing Torque | 154 kN-m | 113,584 lb-ft |

Weights

| | | |
|--|-----------|-----------|
| Operating Weight – General Forestry | 41 500 kg | 91,490 lb |
| • High Wide undercarriage, Reach boom, R3.2 m (10'2") Reach stick, 700 mm (28") double grouser shoes, 1.76 m ³ (2.30 yd ³) HD bucket. | | |
| Operating Weight – Log Loader, Over/Under | 44 100 kg | 97,220 lb |
| • High Wide undercarriage, Log Loader boom, 4.05 m (13'3") Under/Under stick with live heel, 700 mm (28") double grouser shoes, no grapple. | | |

Air Conditioning System

The air conditioning system on this machine contains the fluorinated greenhouse gas refrigerant R134a (Global Warming Potential = 1430). The system contains 2.1 (22" Riser Cab)/2.2 (48"/72" Riser Cab) kg of refrigerant, which has a CO₂ equivalent of 3.003/3.146 metric tonnes.

Service Refill Capacities

| | | |
|-----------------------------------|--------|---------|
| Fuel Tank | 990 L | 262 gal |
| Cooling System | 38 L | 10 gal |
| Engine Oil | 25 L | 7 gal |
| Swing Drive | 13.5 L | 4 gal |
| Final Drive – Each | 9.5 L | 3 gal |
| Hydraulic System – Including Tank | 348 L | 92 gal |
| Hydraulic Tank | 185 L | 49 gal |
| Diesel Exhaust Fluid (DEF) Tank | 41 L | 11 gal |

Working Ranges

General Forestry

Road Builder

Reach 6.15 m (20'2") boom, Reach 3.2 m (10'6") stick, 1.76 m³ (2.3 yd³) HD bucket

| | | |
|-------------------------------|-----------|--------|
| Maximum Reach at Ground Level | 10 620 mm | 34'10" |
|-------------------------------|-----------|--------|

Log Loader

Under/Under

Log Loader 6.8 m (22'4") boom, under/under 4.05 m (13'3") stick

| | | |
|-------------------------------|-----------|-------|
| Maximum reach at ground level | 11 980 mm | 39'4" |
|-------------------------------|-----------|-------|

Over/Under

Log Loader 6.8 m (22'4") boom, over/under 4.05 m (13'3") stick

| | | |
|-------------------------------|-----------|-------|
| Maximum reach at ground level | 12 590 mm | 41'4" |
|-------------------------------|-----------|-------|

Power Clam

Log Loader 6.8 m (22'4") boom, power clam 4.35 m (14'3") stick

| | | |
|-------------------------------|-----------|-------|
| Maximum reach at ground level | 11 030 mm | 36'2" |
|-------------------------------|-----------|-------|

Working Ranges

| | General Forestry | Log Loader |
|--------------------------------------|-----------------------------|-----------------------------------|
| Boom | Reach 6.15 m (20'2") | LL 6.8 m (22'4") |
| Stick | Reach 3.2 m (10'6") | Over/Under 4.05 m (13'3") |
| Stick | — | Under/Under 4.05 m (13'3") |
| Stick | — | Power Clam 4.35 m (14'3") |
| Shipping Height (cab tilted) | 3760 mm (12'4") | 3490 mm (11'5") |
| Handrail Height | 3510 mm (11'6") | 3520 mm (11'7") |
| Shipping Length* | 14 060 mm (46'2") | 15 030 mm (49'4") |
| Road Builder – with bucket | 14 060 mm (46'2") | — |
| Under/Under – no grapple | — | 15 730 mm (51'7") |
| Over/Under – no grapple | — | 15 030 mm (49'4") |
| Power Clam – no grapple | — | 14 630 mm (48'0") |
| Tail Swing Radius | 3530 mm (11'7") | 3530 mm (11'7") |
| Counterweight Clearance | 1500 mm (4'11") | 1500 mm (4'11") |
| Ground Clearance | 770 mm (2'6") | 770 mm (2'6") |
| Track Length | 5160 mm (16'11") | 5160 mm (16'11") |
| Length to Center of Rollers | 4120 mm (13'6") | 4120 mm (13'6") |
| Track Gauge | 2920 mm (9'7") | 2920 mm (9'7") |
| Transport Width – 700 mm (28") shoes | 3650 mm (12'0") | 3650 mm (12'0") |

*Boom and stick stretched out.

STANDARD & OPTIONAL EQUIPMENT

Standard and optional equipment may vary. Consult your Cat dealer for details.

| | Standard | Optional |
|---|----------|----------|
| UNDERCARRIAGE AND STRUCTURES | | |
| High Wide undercarriage | ✓ | |
| Grease lubricated track with positive pin retention | ✓ | |
| Catwalks | ✓ | |
| Tie down points | ✓ | |
| Counterweight fuel tank | ✓ | |
| Heavy-duty track rollers | ✓ | |
| Heavy-duty travel motor guards | ✓ | |
| Heavy-duty bottom guards | ✓ | |
| Track guiding guards | ✓ | |
| High drawbar final drives | ✓ | |
| Heavy-duty recoil springs | ✓ | |
| Heavy-duty hydraulic swivel | ✓ | |
| Heavy-duty hydraulic swivel guard | ✓ | |
| 850 mm (33") triple grouser shoes | | ✓ |
| 700 mm (28") double and single grouser shoes | | ✓ |
| BOOMS AND STICKS | | |
| 6.15 m (20'2") Reach boom – General Forestry | | ✓ |
| 6.08 m (22'4") boom – Log Loader | | ✓ |
| 3.2 m (10'6") Reach stick | | ✓ |
| 4.05 m (13'3") over/under stick | | ✓ |
| 4.05 m (13'3") under/under | | ✓ |
| 4.35 m (14'3") power clam | | ✓ |
| SERVICE AND MAINTENANCE | | |
| Side-entry service platform | ✓ | |
| Left/right-side fuel fill locations | ✓ | |
| Grouped location for engine oil and fuel filters | ✓ | |
| S-O-S ports | ✓ | |
| Integrated vehicle health management system | | ✓ |

| | Standard | Optional |
|---|----------|----------|
| CAB | | |
| ROPS Forestry cab with polycarbonate windows | ✓ | |
| 4-point harness seat belt | ✓ | |
| Heated and cooled seat with air-adjustable suspension | ✓ | |
| Integrated joysticks | ✓ | |
| Tilt-up left-side console (side-entry cab only) | ✓ | |
| High-resolution touchscreen monitor | ✓ | |
| Bluetooth integrated radio (including USB, auxiliary port and microphone) | ✓ | |
| 12V DC outlets | ✓ | |
| Keyless push-to-start engine control | ✓ | |
| Automatic bi-level air conditioner | ✓ | |
| LED dome and floor lights | ✓ | |
| Windshield wiper and washer | ✓ | |
| Behind seat storage | ✓ | |
| Retractable sunshade | ✓ | |
| Rear entry | | ✓ |
| Side entry | | ✓ |
| 559 mm (22") tilting riser | | ✓ |
| 1219 mm (48") tilting riser | | ✓ |
| 1829 mm (72") tilting riser | | ✓ |
| CB radio mounts | | ✓ |
| Cat Stick Steer | | ✓ |
| Auxiliary relay | | ✓ |

(continued on next page)

STANDARD & OPTIONAL EQUIPMENT *(continued)*

Standard and optional equipment may vary. Consult your Cat dealer for details.

| | Standard | Optional |
|--|----------|----------|
| ENGINE | | |
| Electric fuel priming pump | ✓ | |
| Three selectable modes: Power, Smart, Eco | ✓ | |
| Automatic engine speed control | ✓ | |
| Automatic engine idle shutdown | ✓ | |
| Up to 4500 m (14,764 ft) altitude capability | ✓ | |
| 52° C (126° F) high-ambient cooling capacity | ✓ | |
| -32° C (-25° F) cold start capability | ✓ | |
| Hydraulic reverse fan | ✓ | |
| Two-stage fuel filter system | ✓ | |
| Double element air filter with integrated pre-cleaner | ✓ | |
| Cold start package with block heater and ether assist | | ✓ |
| SAFETY AND SECURITY | | |
| Caterpillar One Key security system | ✓ | |
| Lockable service doors | ✓ | |
| Lockable external tool/storage box | ✓ | |
| Lockable fuel caps and hydraulic tank | ✓ | |
| Service platforms with anti-skid plate and countersunk bolts | ✓ | |
| Right Hand (RH) handrail and handhold | ✓ | |
| Signaling/warning horn | ✓ | |
| Ground-level secondary engine shutoff switch | ✓ | |
| Rearview camera | ✓ | |
| Travel alarm | ✓ | |
| Easy lock cab tilting system (rear-entry cab only) | | ✓ |
| Cab riser light | | ✓ |
| Inspection lighting | | ✓ |
| Right-hand sideview camera | | ✓ |
| Swing alarm | | ✓ |

| | Standard | Optional |
|---|----------|----------|
| HYDRAULIC SYSTEM | | |
| Boom and stick regeneration circuits | ✓ | |
| Boom and stick drift reduction valve | ✓ | |
| Electronic main control valve | ✓ | |
| Automatic hydraulic oil warmup | ✓ | |
| Automatic swing parking brake | ✓ | |
| High performance hydraulic return filter | ✓ | |
| Automatic two speed travel | ✓ | |
| Bio hydraulic oil capability | ✓ | |
| High torque swing drive | ✓ | |
| Swing cushion valve | ✓ | |
| Tool control software | ✓ | |
| Medium pressure circuit | | ✓ |
| CAT TECHNOLOGIES | | |
| VisionLink | ✓ | |
| Remote Services capability | ✓ | |
| ELECTRICAL SYSTEM | | |
| Maintenance-free 1000 CCA batteries (x4) | ✓ | |
| Centralized electrical disconnect switch | ✓ | |
| LED chassis, boom (GF), stick (LL) and cab lights | ✓ | |
| Premium lighting – General Forestry – 6 additional LED lights | | ✓ |
| Premium lighting – Log Loader – 10 additional LED lights | | ✓ |

For more complete information on Cat products, dealer services and industry solutions, visit us on the web at www.cat.com.

© 2024 Caterpillar. All Rights Reserved.

VisionLink is a trademark of Caterpillar Inc., registered in the United States and in other countries.

Materials and specifications are subject to change without notice. Featured machines in photos may include additional equipment. See your Cat dealer for available options.

CAT, CATERPILLAR, LET'S DO THE WORK, their respective logos, SmartBoom, S·O·S, Product Link, "Caterpillar Corporate Yellow," the "Power Edge" and Cat "Modern Hex" trade dress as well as corporate and product identity used herein, are trademarks of Caterpillar and may not be used without permission.
www.cat.com www.caterpillar.com

AEXQ3535-01
Replaces AEXQ3535
Build Number: 07B
(Aus-NZ, N Am)

