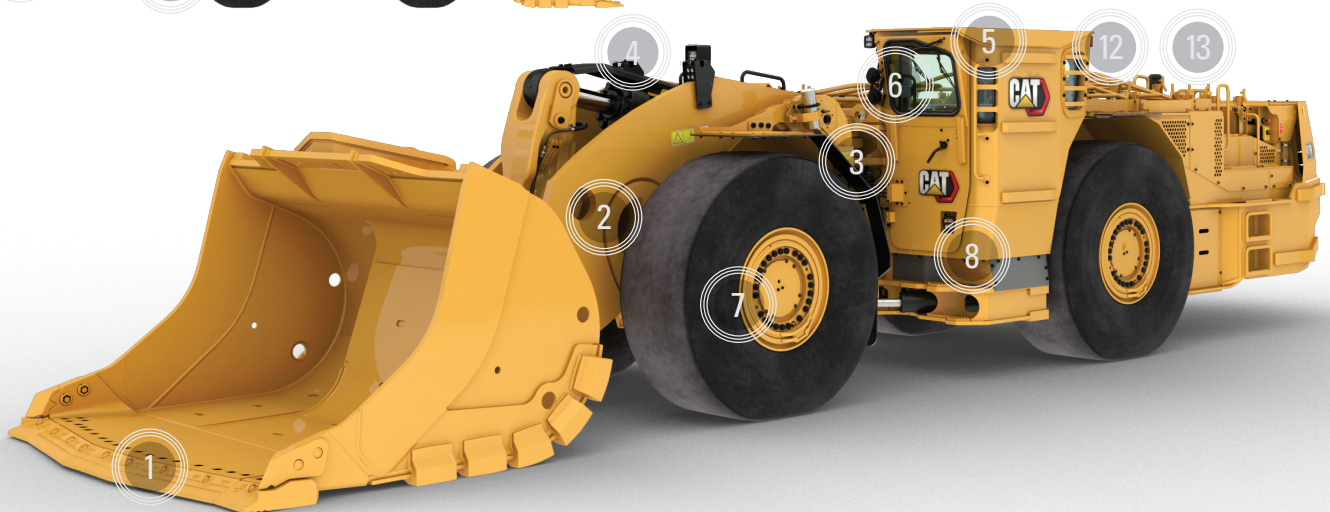


THE CAT® R1700 UNDERGROUND LOADER

EXPECT MORE FROM THE NEXT GENERATION

1. Multiple available bucket options including dump buckets, ejector buckets and bolt-together buckets, plus full range of Cat® GET to achieve best productivity while maximizing bucket life
2. Proven frame design for increased durability
3. Redesigned hitch with more space, new and larger pins connecting the two frames, and clean and simplified hydraulic routings
4. Aggressive hydraulic performance for machine responsiveness and improved loading times, with ride control fully integrated into the hydraulic system
5. Continuous focus on operator safety and comfort including ROPS/FOPS cabin with ergonomic layout, operator present system, and interior and exterior safety details
6. In-cab information displays that provide real-time system information on high-resolution dash display with 11 language options
7. Autodig function to optimize loading, and traction control to maximize tire life
8. Product Link™ Elite (PLE) System for machine health monitoring
9. Efficient Cat C13 engine provided in EU Stage V, Tier 3/Stage IIIA or Tier 2/Stage II VR (ventilation reduction); also capable of high altitude operation
10. New lock-up clutch torque converter and resized transmission and axles to manage added weight and capacity and achieve speed on grade improvement
11. Single bolt-in fuel tank that is simple to maintain and offers approximately 12 hours of operation before refueling
12. Cat MineStar™ and Command for underground managed through onboard electronics; available automation-ready from the factory
13. Cat electrical components—like connectors, wiring harnesses and ECMs—designed to live in corrosive environments
14. Radiator guard that swings open to allow service access; high-efficiency radiator as optional cooling package
15. Modular design and centralized ground-level service section for easy serviceability
16. Brake release and tow hook option that make it possible to remove the machine and disengage the park brake in the event the machine must be towed



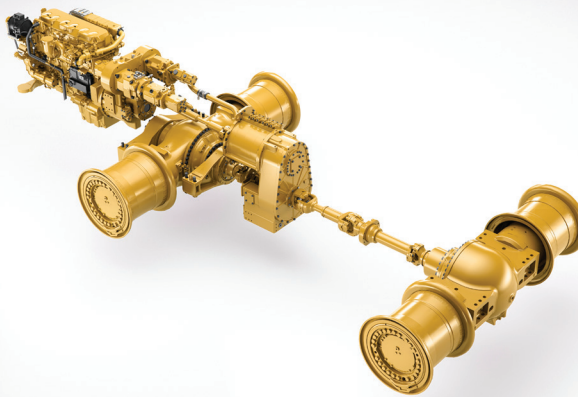
THE CAT® R1700 UNDERGROUND LOADER



15 000 kg / 33,069 lb
RATED PAYLOAD

24 190 kg / 53,330 lb
BREAKOUT FORCE
(LIFT AND TILT)

257 kW / 345 hp
ENGINE POWER
STAGE V ENGINE – ISO14396:2002*



EXPECT MORE FROM OUR NEW GENERATION OF LHDS

- » Sits on a new frame, has much larger powertrain components, and uses the Cat C13 ACERT™ diesel engine for power.
- » Well-balanced to support long-term durability of components and structures, improve digging performance, and provide a better ride for the operator.
- » Much simpler to operate, with Autodig loading and automatic retarding for confidence on long downhill hauls.
- » Offers new levels of performance with balanced lift, tilt and breakout forces when loading; peak rimpull is higher, and when combined with new traction control system, aggressively goes into the pile with little to no tire slip, and then extricates the machine just as quickly.
- » Multiple bucket options (including dump buckets, light material bucket, ejector bucket and bolt-together buckets) available; can be equipped with Cat ground engaging tools that offer tremendous life.

SUPERIOR CONTROL, COMFORT AND SAFETY FOR OPERATOR

- » All new HVAC coverage with improved airflow, greater defrosting coverage and reduced noise levels.
- » Improved ergonomics on all controls; joystick control.
- » Isolation-mounted cab for reduced vibration transfer to the operator.
- » Quick-start dash display with information available before engine start.
- » Ground-speed control limiting that can be set from the factory.
- » Neutral coast inhibiting.
- » All machine electronic control modules moved to dedicated sealed box outside of the cab.



SUPERIOR PRODUCTIVITY

- » Huge leap forward in LHD design, technology integration and diesel emission controls.
- » 20% capacity increase, which makes the R1700 a true 15-tonne loader for both load and haul and truck loading; perfect three-pass match with Cat AD45 underground truck.**
- » Offers 65% more lift force for noticeable power and performance inside the pile, delivering quick loading cycles.**
- » Features 34% more fuel efficiency, made possible by the Cat C13 engine and ultra-efficient hydraulics.**

*Tier 3/Stage IIIA or Tier 2/Stage II VR (ventilation reduction) also available

**Compared to R1700G

SAFETY

- » Service area located on cold side of engine.
- » Ansul LVS (wet) Fire Suppression available; multiple fire suppression activation points.
- » Operator present system using the door sensor and the latch sensor.
- » Available door and seat belt monitoring systems.
- » New braking performance, slope holding capabilities and brake wear indicators.
- » Available tire pressure monitoring system.
- » Redesigned handrail system with full coverage for people on the work platform.

