

REACHING NEW HEIGHTS



CUSTOMER:

S&S Metal Fabrication

PRODUCT:

Alpha-1 Platform Harvester

LOCATION:

Kingsburg, California

SCOPE OF ENGINE USE:

Cat® C1.1 U.S. EPA Tier 4 Final,
EU Stage V Industrial Diesel Engine

CAT® DEALER:

Quinn Company

www.quinncompany.com

WEBSITE:

www.ssmetalfabinc.com/about



FEATURED TOPIC:

Cat® C1.1

Throughout history, farmers have relied on ladders to harvest tree fruit – the same risky, rickety, time-consuming means of their ancestors. But now, things are changing.

A family-owned operation, S&S Metal Fabrication was established in 2003 to serve the California Central Valley's agricultural machine repair industry. As the business began to integrate into local farming communities, they noticed an agricultural pain point: the old-fashioned methods of harvesting tree fruit and their long-overdue revamp. The process, which involved climbing ladders to reach ripened fruit, made for difficult, tedious and dangerous work. Farmers needed a solution specialized for their crops that would also be compliant with California's strict emission and safety regulations.

THE FRUITS OF LESS LABOR

In 2018, S&S Metal Fabrication redirected their efforts toward revolutionizing the harvest of fruits like peaches, plums, apples, oranges and cherries, with the self-propelled Alpha-1 Platform Harvester, thereby eliminating the need for impractical ladders. And in agriculture, where safety is of the essence and every margin counts, that's good news. Since the Alpha-1 comes equipped with multi-point harness tie-offs, workers are secured to its smooth-riding platform to drastically reduce injuries. Blake Dodd, co-owner of S&S Metal Fabrication and creator of the Alpha-1 Platform, also advised that while a person on a ladder might harvest two standard bins of fruit in an hour, the Alpha-1 easily averages five to seven. The machine saves so much time that farmers can afford to pick their fruit in multiple sessions according to optimal ripeness, as opposed to an all-at-once haul that assumes loss due to rot.

When it came to outfitting the Alpha-1 with the right industrial diesel engine, the choice was easy. Dodd explained, "I was raised on a farm that grew tree fruit. My father worked for Quinn Cat as a mechanic for 40 years, and we wrenched and welded on all types of equipment growing up." He added, "The experience helped me to where I'm at now."

CLEVERLY COMPACT AND CONVENIENTLY QUIET

Because fruit-bearing trees are often planted in narrow rows, harvesting equipment must be designed to maneuver through tight spaces without damaging the delicate crops. Thanks to the ultra-compact design of the Cat C1.1 engine, it was the perfect fit for the streamlined body of the Alpha-1.

But the C1.1's discreet, unintrusive specs don't end there. While it delivers high performance throughout a wide speed range, the engine also works quietly for maximum operator comfort.

SUITED FOR STICKY BUSINESS

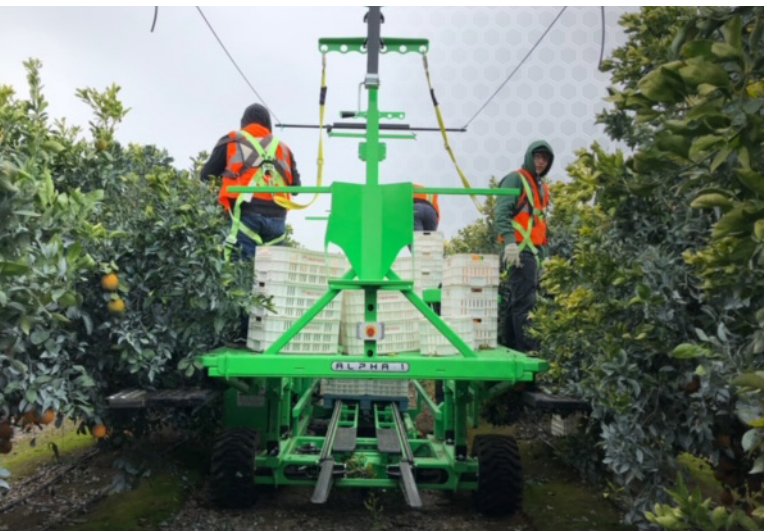
Fruit harvesting exposes equipment components to high levels of wear and grime. With world-class manufacturing and proven core engine design, however, the C1.1's ultra-durable engine package was up to the challenge. Manufactured to meet U.S. EPA Tier 4 Final emissions standards, the engine is also optimized for economical fuel consumption, a broad range of applications and low operating costs.

COVERAGE FROM CATERPILLAR

When harvest season rolls around, S&S Metal Fabrication can count on Caterpillar for outstanding service. Any and all maintenance needs are supported by a global network of dealers to help keep their C1.1 up and running and their Alpha-1 in perfect picking condition.



“When a customer sees Cat yellow, they think ‘quality, reliability, and service.’ It speaks for itself.”



LET'S DO THE WORK.™

© 2022 Caterpillar. All Rights Reserved. CAT, CATERPILLAR, LET'S DO THE WORK, their respective logos, "Caterpillar Corporate Yellow," the "Power Edge" and Cat "Modern Hex" trade dress, as well as corporate and product identity used herein, are trademarks of Caterpillar and may not be used without permission.

