



# COLD PLANER PARTS REFERENCE GUIDE

SHOP ONLINE AT [WWW.PARTS.CAT.COM](http://WWW.PARTS.CAT.COM) OR CONTACT YOUR LOCAL CAT DEALER





CAT

PM822

GRADE CONTROL

CAT



<b>Introduction</b> .....	<b>4</b>	<b>Conveyor System</b> .....	<b>24</b>
<b>Support</b> .....	<b>4</b>	Rollers and Bearings .....	25
Repair Options .....	4	Primary Conveyor Rollers and Bearings .....	26
Cat Inspect App .....	4	Secondary Conveyor Rollers and Bearings .....	27
Genuine Cat® Parts .....	5	Flashing and Belts .....	28
Parts Kits .....	5	Primary Conveyor Flashing and Belts .....	29
Cat Service Information System (SIS) .....	5	Secondary Conveyor Flashing and Belts .....	30
Locating Serial Numbers and Build Numbers .....	6	<b>Undercarriage</b> .....	<b>31</b>
<b>Rotors</b> .....	<b>7</b>	Components .....	33
System K Rotor Features and Benefits .....	8	<b>Spray Systems</b> .....	<b>34</b>
Rotor Applications .....	9	Washdown and Dust Reduction .....	36
Rotor Options .....	10	Chamber Spray Arrangement .....	37
System K Kicker Paddles .....	11	<b>Grade Control</b> .....	<b>38</b>
System K Toolholders .....	11	Cat Grade and Slope System .....	39
System K Blocks and Triple Trees .....	11	Components .....	40
Service Tools .....	12	<b>Upgrades and Accessories</b> .....	<b>41</b>
Carbide Cutter Bit Features and Benefits .....	13	Lighting .....	43
Carbide Bit Offering .....	14	Mirrors .....	43
Diamond Bit Features and Benefits .....	15	Cameras .....	44
Diamond Bit Offering .....	16	<b>Preventative Maintenance</b> .....	<b>45</b>
<b>Cutting Chamber</b> .....	<b>17</b>	PM310, PM312, PM313 .....	46
Wear Skis .....	19	PM620, PM622, PM820, PM822, PM825 .....	47
Moldboard Cutting Edges .....	20	<b>VisionLink™</b> .....	<b>49</b>
<b>Rotor Drive System</b> .....	<b>21</b>		
Rotor Drive Components .....	23		



# SUPPORT

## WHEN YOU NEED IT MOST

When we say we're right there with you, we mean it. We're focused on building relationships that extend well beyond machines. That means sharing our expertise to help you select, finance, operate and maintain equipment and then standing by your side to keep that equipment—and your business—running smoothly.

To learn more, contact your local Cat dealer and your Cat Financial Commercial Account can help with convenient payment plans for any parts and/or service needs. [FIND YOUR DEALER](#)



**FIND YOUR DEALER**

## REPAIR OPTIONS

Maximize your uptime and minimize overall owning and operating costs by planning an off-season repair and annual replacement of wear parts. Whether you are a Do-it-myself, Do-it-with-me, or a Do-it-for-me customer, your Cat dealer is ready to assist you with parts orders to complete rebuilds of your equipment.

**DO-IT-MYSELF** – If you prefer to do the work in-house, your Cat dealer can help you determine your parts needs. One of our experts will utilize Caterpillar Service Information, or can perform a (TA1) visual inspection, or (TA2) technical inspection to help you identify your parts replacement needs.

**DO-IT-WITH-ME** – In addition to providing parts, your Cat dealer can supplement your repair capabilities with fully trained technicians and specialized tooling that your team may not have.

**DO-IT-FOR-ME** – Your Cat dealer can manage the replacement of vital wear parts or a complete rebuild. Ask your dealer about an inspection and a repair option plan to meet your needs.

## CAT® INSPECT APP PROVIDES QUICK AND EASY DIGITAL INSPECTIONS

Cat Inspect allows you to access your equipment data on your mobile device. This easy-to-use app lets you capture inspection data and integrates with your other Cat data systems, so you can keep a close eye on your fleet.

**To get access, speak with your Cat dealer today to start using the Cat Inspect App for your equipment inspections.**



### LEARN MORE

Find out more about the [Cat Inspect app](#)



# PROTECT YOUR INVESTMENT WITH GENUINE CAT® PARTS

This guide is designed to provide you with a **quick reference for key wear and maintenance parts** and part numbers you need to keep your Cat cold planer operating at peak efficiency. It is not a replacement for the Parts Manual. Always read and understand the machine's Operation and Maintenance Manual prior to performing any type of maintenance.

Proactive preventative maintenance extends the life of your machine and protects your investment. Proper maintenance minimizes the need for repair and replacement. In the event that replacement parts are required, the use of genuine Cat parts helps maximize machine performance and maintains high resale value.

**PURCHASE PARTS  
AND OPERATION AND  
MAINTENANCE MANUALS  
ONLINE 24/7**

<http://catpublications.com/>



## 5 REASONS TO USE GENUINE CAT PARTS

1. Cat parts are constructed of top-quality materials, built to exact original specifications by our engineers and rigorously tested to ensure maximum performance.
2. Cat parts are precisely matched to other Cat components for an exact fit to deliver greater reliability, durability and longer life.
3. We maintain the largest inventory of replacement parts in the industry to ensure the best possible availability anywhere in the world.
4. By using only Cat parts you maintain your equipment integrity to maximize its resale value.
5. Cat parts come with a 12-month warranty backed by Caterpillar and supported by dealers around the world.

### PARTS KITS

Some models offer parts kits that include all of the parts needed for a specific repair or rebuild in addition to part numbers for the individual pieces with the quantity needed. Paper kits contain a compiled list of the part numbers to order for select repairs, rebuilds or upgrades. For complete replacement parts lists, service, and ordering information by machine sales model, contact your local Cat dealer.

### CAT SERVICE INFORMATION SYSTEM (SIS)

Cat Service Information System (SIS) is the electronic service tool that covers all information for Cat products from 1977 to today. With 2 million service graphics, 1.5 million parts numbers, and 44,000 parts/service documents, this tool is the equivalent of over 25,000 books a click away!



[WWW.PARTS.CAT.COM](http://www.parts.cat.com)

Register and create your SIS account or shop parts online 24/7



## LOCATING THE SERIAL NUMBER AND BUILD NUMBER

Knowing the Serial Number and Build Number (if applicable) for your equipment is important for selecting the correct replacement parts, accessories, upgrades, filters and fluids.

If you are uncertain about which parts to order, your Cat dealer is ready to assist with the ordering process.



1. Each machine has a unique PIN number.
2. The Serial Number is the last 8 characters of the PIN number. PIN plate locations are shown below.
3. Some models will have a Build Number. If your machine has one, it is located above the PIN number. In some cases, parts or upgrades may only apply to machines with a certain build number. If this exception applies, it will be noted on the part number tables in this document.

Right side of the machine above the front track



PM310, PM312, PM313



PM620, PM622,  
PM820, PM822, PM825



## ROTORS DESIGNED WITH YOU IN MIND

SAVE TIME AND MONEY

System K rotors for milling were inspired from Caterpillar's expertise in Ground Engaging Tools and feedback from contractors like you. Designed to make changing cutter bits easier, the toolholder eliminates the need for retaining bolts, pins and setscrews, so you can get back in the cut faster.



# SYSTEM K ROTORS

Engineered specifically for Cat cold planers, Cat System K rotors feature efficient material flow with a uniform cutting pattern and are designed to simplify maintenance.

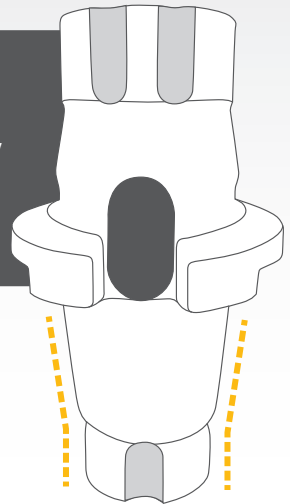
Maintaining bits and toolholders is key to achieving maximum productivity, and System K rotors are designed to simplify maintenance and get you back to work faster.

- + Dual-retention toolholders eliminate the need for fasteners
- + Bit removal can be done through multiple methods
- + A variety of removal tools specifically for System K rotors help you replace bits and toolholders quickly

# ZERO FASTENERS

## TAPERED, DUAL-RETENTION DESIGN

**ELIMINATES**  
RETAINING PINS,  
BOLTS AND  
SETSCREWS



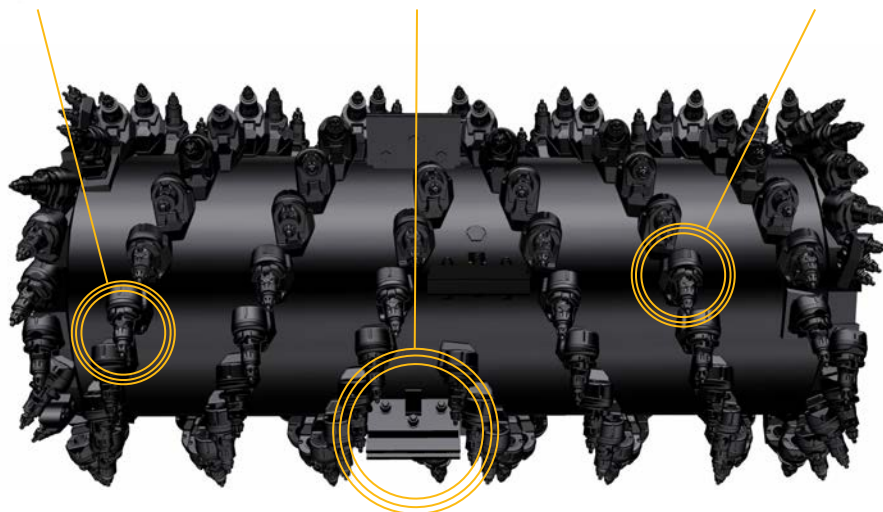
**EASY TOOTH  
REMOVAL**



**KICKER  
PADDLES**



**FASTENER-FREE  
TOOLHOLDER**





# ROTOR APPLICATIONS

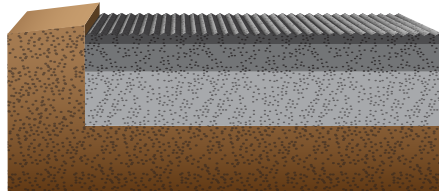
Whether texturing a road or milling an airport runway, we have a rotor that will match your job requirements and help you meet your production goals.

## MICRO MILLING

**Spacing:** 6 mm, 6x2 mm\*

**Application:** Very fine milling finish to meet specific job specifications

**Recommended Milling Depth:**  
0-51 mm (0-2 in)



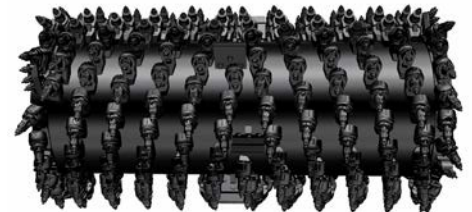
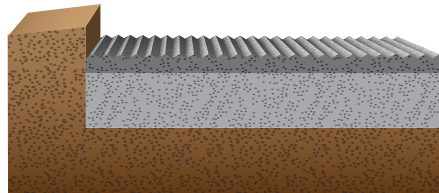
\* 6x2 mm rotor is a System H design

## FINE MILLING

**Spacing:** 8 mm, 10 mm\*\*

**Application:** Fine milling finish for smooth surface removal

**Recommended Milling Depth:**  
0-101 mm (0-4 in)



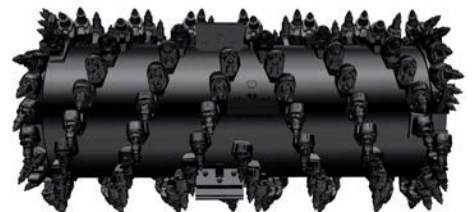
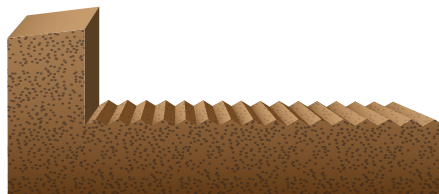
\*\* 10 mm available on the PM622, PM822 and PM825 only

## STANDARD MILLING

**Spacing:** 15 mm

**Application:** Surface removal or complete removal of road surfaces

**Recommended Milling Depth:**  
0-330 mm (0-13 in)

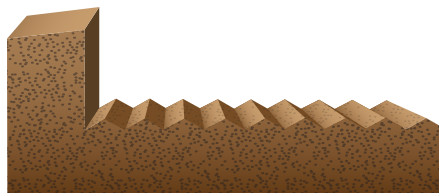


## COARSE MILLING

**Spacing:** 18 mm and 25 mm

**Application:** Surface removal or complete removal of road surface with a rougher finish

**Recommended Milling Depth:**  
0-330 mm (0-13 in)





## ROTOR OPTIONS

MILLING TYPE	MACHINE MODEL	TOOL SPACING (MM)	NUMBER OF BITS	MILLING WIDTH (MM)	PART NUMBER
Micro	PM620, PM820	6	350	2010	575-7463
	PM622, PM822	6	386	2235	575-7467
	PM825	6	431	2505	575-7471
	PM620, PM820	6x2*	672	2010	501-2144*
	PM622, PM822	6x2*	748	2235	511-5050*
Fine	PM310	8	150	1000	567-0886
	PM312	8	172	1225	567-0892
	PM313	8	181	1300	567-0898
	PM620, PM820	8	276	2010	567-0932
	PM622, PM822	8	304	2235	567-0904
	PM825	8	338	2505	567-0907
	PM622 / PM822	10	247	2235	625-2144
	PM825	10	274	2505	636-3270
Standard	PM102	15	91	1000	597-3340
	PM200	15	170	2010	529-7637
	PM200	15	185	2235	594-0222
	PM201	15	180	2100	588-8864
	PM310	15	91	1000	522-0118
	PM312	15	106	1225	522-0127
	PM313	15	111	1300	522-0133
	PM620, PM820	15	170	2010	497-9842
	PM622, PM822	15	185	2235	517-1709
	PM825	15	203	2505	517-0842
	Coarse	PM310	18	80	1000
PM312		18	92	1225	567-0895
PM313		18	98	1300	567-0901
PM620, PM820		18	150	2010	559-1545
PM622, PM822		18	162	2235	558-6381
PM825		18	177	2505	567-2017
PM620, PM820		25	122	2010	582-7727
PM622, PM822		25	131	2235	582-8826
PM825		25	143	2505	582-8830

\* 6x2 mm rotor is a System H design



### SYSTEM K KICKER PADDLES

MACHINE MODEL	TOOL SPACING	APPLICATION	PART NUMBER
PM310, PM312, PM313	8 mm	Fine	567-0937
	15 mm	Standard	602-5729
	18 mm	Coarse	637-9437
PM620, PM622, PM820, PM822, PM825	6 mm	Micro	567-0937
	8 mm	Fine	637-9437
	15 mm	Standard	602-5629
	18 mm	Coarse	602-5629
	25 mm	Coarse	559-7707

### SYSTEM K TOOLHOLDERS

SHANK SIZE	PART NUMBER
20 mm	583-6054
22 mm	623-3644
25 mm	623-3647

### SYSTEM K BLOCKS AND TRIPLE TREES

APPLICATION	DESCRIPTION	PART NUMBER
Micro, Fine	Left Side Block	606-3852
Micro, Fine	Right Side Block	606-3855
Standard, Coarse	Left Side Block	567-0938
Standard, Coarse	Right Side Block	567-0939
All	End Ring Block	496-3468
All	Left Triple Tree	541-7552
All	Right Triple Tree	541-7553



## SERVICE TOOLS

TOOL	DESCRIPTION	PART NUMBER
Storage Case	For pneumatic hammer and punches	647-3932
Pneumatic Hammer	Compatible with interchangeable tools for rotor maintenance	625-8775
Pneumatic Punch (57 degrees)	To remove bits through slot in toolholder	609-2601
Pneumatic Punch (15 degrees)	To remove bits through slot in toolholder	545-9105
Pneumatic Punch (straight)	To remove bits through back of base block	226-0124
Pneumatic Flat Chisel	To remove bits under washer	223-4355
Pneumatic Fork Tool	To remove bits under washer	592-9019
Pneumatic Cup Tool	For bit installation	625-9698
Hand Tool	To remove bits through slot in toolholder	543-5470
	To remove bits	609-1092
	To remove toolholder and static diamond bits	592-3967
	To install static diamond bits	504-5049
Extractor	For damaged toolholders	577-4176
Toolholder and Static Diamond Installation Press Kit	Pneumatic installation tool for System K tool holders and System K Diamond cutting tools  <b>Includes:</b> Tool holder and diamond adapters, pneumatic assembly, support bracket, all required fittings and hose	591-1346
Service Tool Kit	Rotor service tool kit for cold planer cutting bit installation and removal. Air gun and attachments included for fast bit maintenance.	675-7792



## CARBIDE BITS

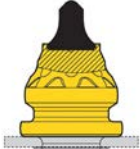


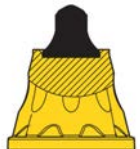



PREMIUM CUTTING BITS OPTIMIZE PERFORMANCE TO MAXIMIZE PRODUCTION

- + Designed to flow material away from the body and prevent material build up
- + Fluted body supports bit rotation to help extend tool life
- + A long collar on the body protects the washer and toolholder
- + Some bits offer puller grooves for fast bit removal
- + Valve seat and plug style bits for high impact applications
- + Variety of tips available to match your application





## CARBIDE CUTTER BITS

APPLICATION	MATERIAL	SHANK SIZE	PULLER GROOVE	PART NUMBER
 Light Duty Milling (Skid Steer)	Soft - Medium Asphalt	20 mm	Yes	Piece: 561-8134
 Light / Medium Duty Milling	Soft - Medium Asphalt	20 mm	Yes	Piece: 560-2306 Pallet: 626-4493*
 Light / Medium Duty Milling	Soft - Medium Asphalt	20 mm	No	<b>FACTORY INSTALLED</b> Piece: 674-7262 Pallet: 626-4495*
 Full-depth Cutting and Stabilizing	Soft - Medium Asphalt	22 mm	No	Piece: 533-5760
 Medium / Heavy Duty Milling	Medium - Hard Asphalt	20 mm	No	Piece: 564-1260 Pallet: 626-4494*
 Medium / Heavy Duty Milling	Hard Asphalt	20 mm	No	Piece: 561-8135 Pallet: 626-4496*
 Concrete Milling	Concrete	20 mm	Yes	Piece: 561-8132

\* Not available in all regions. Please contact your Cat dealer for availability.



# CAT DIAMOND BITS

DESIGNED FOR LONGER LIFE, MORE UPTIME AND LOWER OPERATING COSTS

For bituminous applications without obstacles such as interstates or motorways, consider Cat Diamond bits. They are designed to stay sharp and last significantly longer than a carbide bit. Diamond bits contribute to improving the return on your milling machine investment by helping you to complete jobs faster and achieve lowering owning and operating costs, month after month.

## WHY CHOOSE DIAMOND BITS

Diamond bits can provide a variety of benefits to milling contractors.

- + Fewer bit changes reduces service time, allowing crews to focus on production
- + Efficient cutting and improved fuel efficiency
- + Consistent cutting patterns
- + Aids in reducing machine vibration helping to improve the life of machine components

### CAT DIAMOND BITS FOR SYSTEM K ROTORS

Available through your Cat dealer for convenient ordering on [PARTS.CAT.COM](http://PARTS.CAT.COM).

**PART NUMBER: 616-1061**



## ENGINEERED TO STAY SHARP LONGER THAN CARBIDE BITS

A single piece design with a non-rotating diamond tip provides directional wear and structural integrity over the life of the bit.

TRADITIONAL STEEL TOOLHOLDER

TUNGSTEN CARBIDE BOLSTER

POLYCRYSTALLINE DIAMOND (PCD) CUTTING TIP



*Results based on customer survey data of cold planer users in North America using diamond bits. Comparison between Cat 540 diamond bits and carbide bits. Average life and exact tonnage is impacted by local aggregate and operating technique.*



## DIAMOND CUTTER BITS

ROTOR SYSTEM	STANDARD DIAMOND	INSTALL TOOL	REMOVAL TOOL
Cat® System K	616-1061	Hydraulic Tool: 591-1346 Hand Tool: 504-5049	625-9697
Cat System J	618-3654	504-5049	473-3835
Kennametal KPF-303	616-1058	504-5049	473-3838
Sollami Quick Change Drum	618-3636	504-5049	473-3837



**CAT SYSTEM K**  
616-1061



**CAT SYSTEM J**  
618-3654



**KENNAMETAL KPF-303**  
616-1058



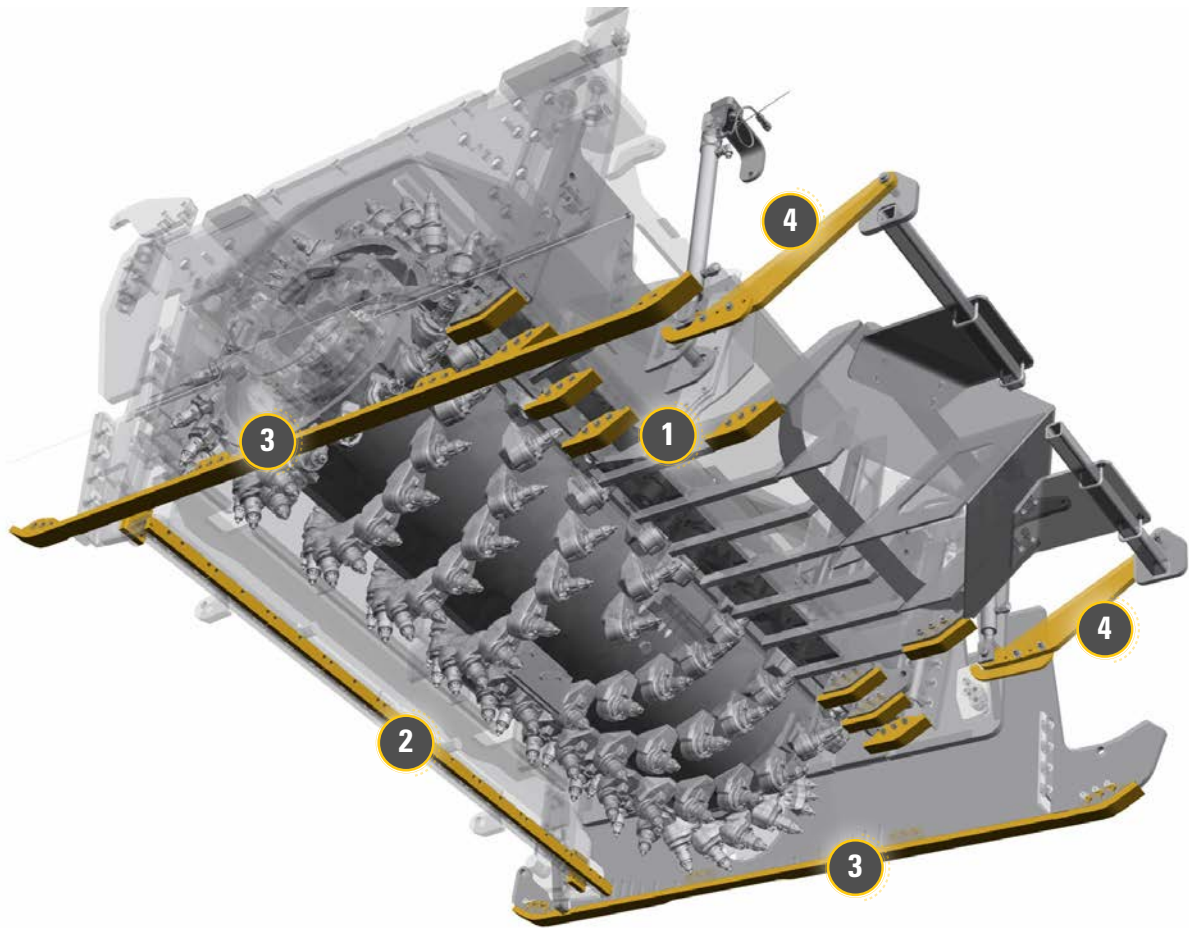
**SOLLAMI**  
618-3636



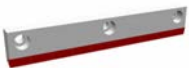
## CUTTING CHAMBER

### PRECISE CONTROL

Regularly inspect the surrounding wear components on the cutting chamber to prevent unwanted damage to other major weldments. Periodically measure the plate or carbide thickness to determine remaining life and proactively plan the next maintenance interval. Some components are reversible for extended life and reduced service intervals. The cutting chamber is designed with bolt on wear components for ease of service.



**1. ANTI-SLAB WEAR SKIS** Made with a wear resistant, carbide overlay for extended life and are reversible for double the life. Regularly inspect and maintain the anti-slab wear skis to ensure proper operation of the anti-slab and prevent large slabs of asphalt from damaging your conveyor system.



**2. MOLDBOARD CUTTING EDGES** Cat cutting edges are made with carbide inserts aligned to provide a flush milled surface for many hours. Maintain moldboard cutting edges to protect the moldboard door, provide a clean milled surface, and prevent material from leaking out the back of the cutting chamber.



**3. SIDEGATE WEAR SKIS** Made of heat treated, wear resistant steel to improve the life of the part with bolt on wear ski for ease of service and replacement. Regular maintenance preserves the sidegates and prevents material from leaking out the sides of the cutting chamber.



**4. INBOARD GRADE CONTROL WEAR SKI** A bolt-on design allows for easy service and replacement. Regular inspection and maintenance of the inboard wear ski is necessary to preserving the inboard system and ensures proper operation of the inboard grade control.



## WEAR SKIS

DESCRIPTION	MACHINE MODEL	PAPER KIT PART NUMBER (INCLUDES HARDWARE)	PART NUMBER	QUANTITY
Anti-slab Wear Ski	PM310, PM312, PM313	568-6406	382-4612	3
	PM620, PM820	569-0304		8
	PM622, PM822	569-0305		9
	PM825	569-0306		10
Sidegate Wear Skis	PM310	568-6397	Right – 538-2608	1
			Left – 541-7828	1
	PM312	568-6396	Right – 538-2608	1
			Left – 541-4528	1
	PM313	568-6394	Right – 538-2608	1
			Left – 519-2275	1
	PM620, PM622, PM820, PM822, PM825	569-0298	Right – 562-9317	1
			Left – 609-0969	1
Inboard Wear Ski	PM620, PM622, PM820, PM822, PM825		590-7785	2

**MOLDBOARD CUTTING EDGES**

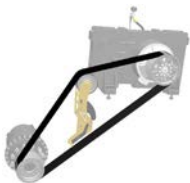
<b>MACHINE MODEL</b>	<b>PAPER KIT PART NUMBER (INCLUDES HARDWARE)</b>	<b>DESCRIPTION</b>	<b>PART NUMBER</b>	<b>QUANTITY</b>
PM310	568-6403	Right	382-4623	1
		Center	382-4624	2
		Left	382-4625	1
		Upper Sides	468-0394	2
PM312	568-6401	Right	382-4623	1
		Center – 222 mm	468-0396	1
		Center – 248 mm	382-4624	2
		Left	382-4625	1
PM313	568-6398	Upper Sides	468-0394	2
		Right	382-4623	1
		Center – 248 mm	382-4624	2
		Center – 297 mm	468-0397	1
PM620, PM820	569-5427 and 569-0300	Left	382-4625	1
		Upper Sides	386-4611	2
		Guide	526-4875	2
		Right	382-4623	1
PM622, PM822	569-5427 and 569-0301	Center – 224 mm	386-4528	1
		Center – 248 mm	382-4624	6
		Left	382-4625	1
		Upper Sides	386-4611	2
PM825	569-5428 and 569-0302	Guide	526-4875	2
		Right	382-4623	1
		Center	382-4624	8
		Left	382-4625	1
PM825	569-5428 and 569-0302	Upper Sides	386-4611	2
		Guide	526-4875	2



## ROTOR DRIVE SYSTEM

DURABILITY DESIGNED IN

Periodically inspect the rotor drive system including the rotor drive belt, pulley system, and sheaves to avoid rotor slippage and ensure efficient rotor operation. Rips, tears, or excessive stretch in the rotor drive belt indicate replacement is necessary. The rotor drive belt comes in a matched set for ease of replacement. Inspect the v-grooves in the sheaves to ensure they are properly engaging with the grooves of the rotor drive belt.



**1. ROTOR DRIVE BELT** Designed to ensure consistent tension when engaging the rotor and prevent slippage.



**2. TENSIONER IDLER** Idler on the tensioner arm for the rotor drive belt.



**3. SHEAVE** Interfaces with v-grooves in rotor drive belt to transfer torque and speed from engine to rotor.



**ROTOR TURNING DEVICE BELT** Belt designed to ensure efficient operation of the rotor turning device.



ROTOR DRIVE SYSTEM COMPONENTS			
MACHINE MODEL	DESCRIPTION	PART NUMBER	QUANTITY
PM310, PM312, PM313	Rotor Drive Belt	516-6103	2
	Tensioner Idler	482-1262	2
	Sheave – Upper	485-3381	3
	Sheave – Lower	470-6519	1
	Rotor Turning Device Belt*	566-9871	1
PM310	Gearbox	590-0218	1
PM312, PM313	Gearbox	590-0217	1
PM620, PM622	Rotor Drive Belt	526-0883	1
	Gearbox	577-3874	1
	Tensioner Idler	391-0218	1
	Sheave – Upper	382-3748	1
	Sheave – Lower	382-3747	1
	Rotor Turning Device Belt	433-7020	1
PM820, PM822, PM825	Rotor Drive Belt	532-8397	1
	Gearbox	577-3875	1
	Tensioner Idler	496-5118	1
	Sheave – Upper	496-5090	1
	Sheave – Lower	496-5091	1
	Rotor Turning Device Belt	433-7020	1

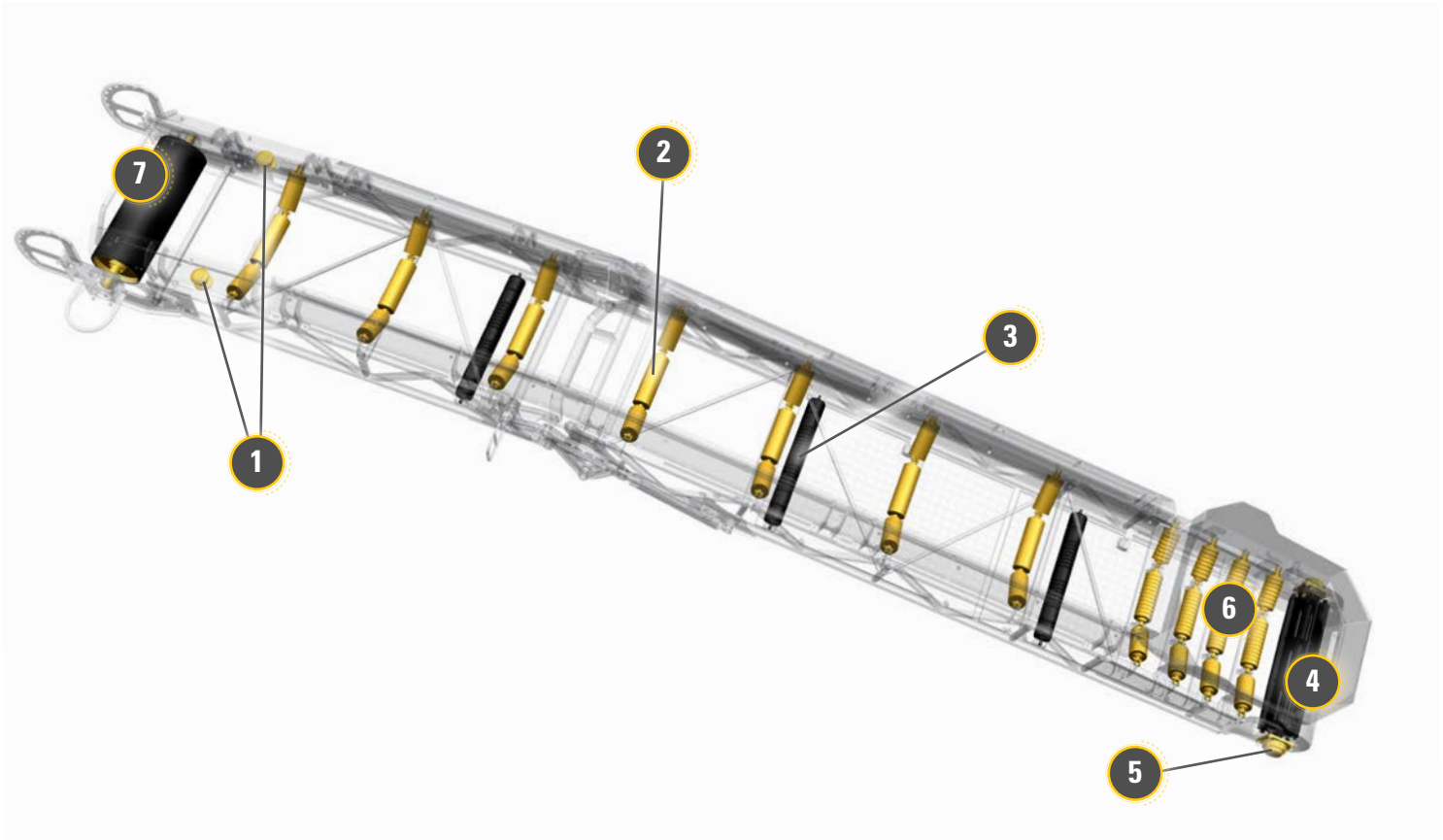
\* Available on models with a Build Number of 02B. Build Numbers are listed on the PIN plate of the machine. Please refer to the introduction section of this document for information on how to locate the PIN plate.



## CONVEYOR SYSTEM

EFFICIENT MATERIAL REMOVAL

Cat conveyor systems are designed to efficiently move material from the cutting chamber out of the machine. A properly maintained conveyor system is important to the overall functionality of the machine and production of the job site. Regularly maintain and inspect the conveyor rollers and flashing for optimal performance and periodically clean any pick-up stock off of the rollers. Flat spots on rollers may indicate they are seized and need replacement. Adjust the conveyor belt flashing to prevent material from leaking out the sides and replace flashing when adjustment is no longer possible.



**1. GUIDE ROLLERS** Steel rollers with rubber on the top and bottom creating a channel to guide the conveyor belt with sealed for life bearings.



**2. TROUGH ROLLERS** Supports the belt in a "U" shape to funnel material to the center of the belt to help prevent spilled material and assist with belt alignment. Equipped with sealed for life bearings.



**3. RETURN IDLERS** Designed to support the return of the conveyor belt. Steel roller wrapped in vulcanized rubber with built in grooves to resist material build up and prevent excessive wear. Equipped with sealed for life bearings.



**4. TAIL PULLEY** Wing pulley with welded contact bars to support the conveyor belt and shaft that interfaces with bearings on each side.



**5. TAIL PULLEY BEARINGS** Supports the tail pulley on both sides. Equipped with end caps to prevent contamination and improve the life of the bearing.



**6. BUNK ROLLERS** Designed to withstand the impact in the loading area of the conveyors. Equipped with continuous rubber discs creating grooves that prevent material build up and sealed for life bearings.



**7. HEAD PULLEY** Wrapped in rubber with cross hatched pattern to prevent material build up and resist wear. Equipped with a shaft and spline that interfaces with the conveyor motor.



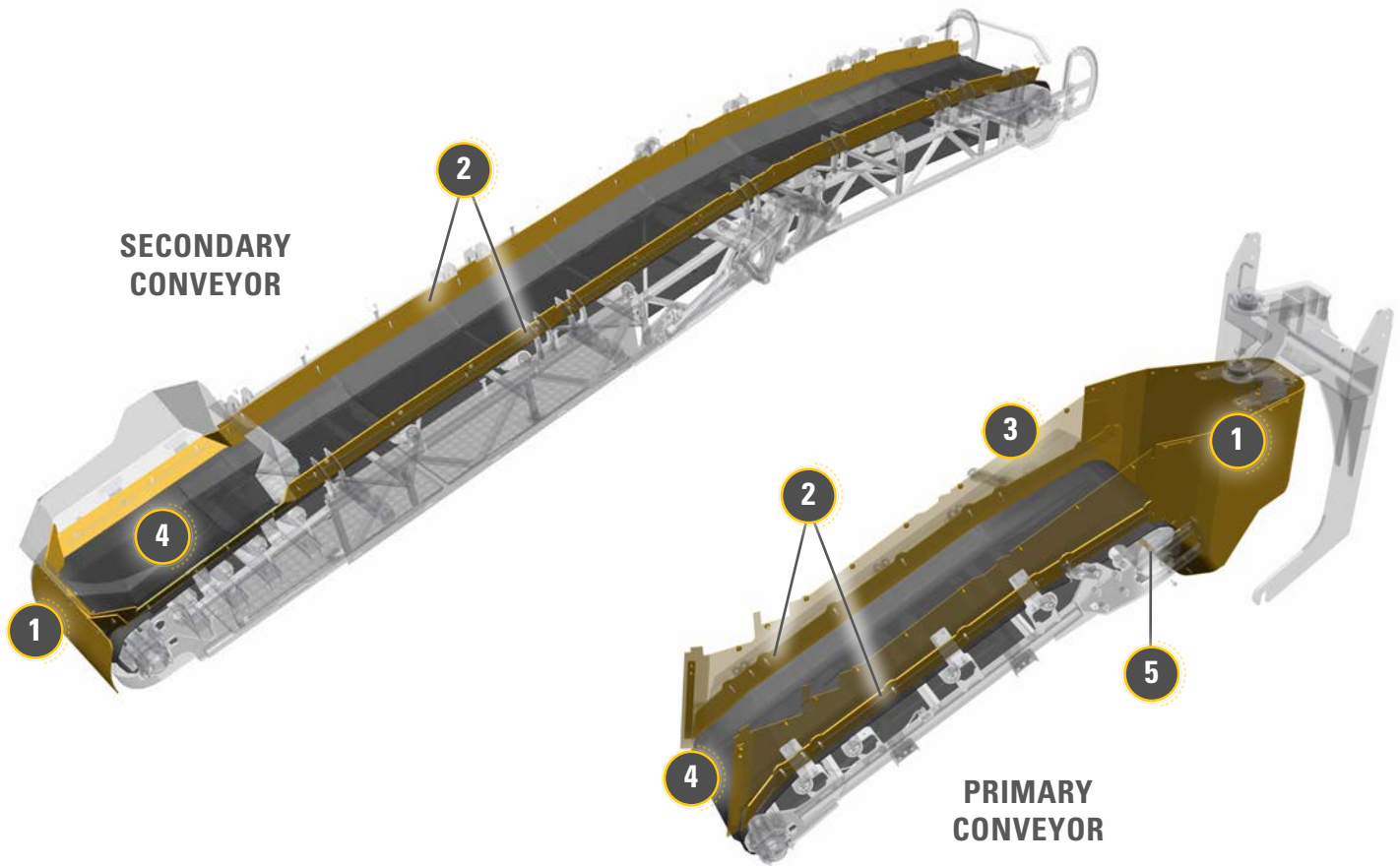
## PRIMARY CONVEYOR ROLLERS AND BEARINGS

DESCRIPTION	MACHINE MODEL	PAPER KIT PART NUMBER (INCLUDES HARDWARE)	PART NUMBER	QUANTITY
Trough Rollers	PM310, PM312, PM313	568-6424	541-1679	5
	PM620, PM622, PM820, PM822, PM825	569-2074	622-7362	4
Return Idlers	PM310, PM312, PM313	568-6420	528-5018	1
	PM620, PM622, PM820, PM822, PM825	569-0347	528-5017	2
Guide Rollers	PM310, PM312, PM313	568-6421	541-1678	2
	PM620, PM622, PM820, PM822, PM825	569-2075	541-1678	2
Head Pulley	PM310, PM312, PM313		584-5693	1
	PM620, PM622, PM820, PM822, PM825		573-6380	1
Tail Pulley	PM310, PM312, PM313		386-2406	1
	PM620, PM622, PM820, PM822, PM825		388-9556	1
Tail Pulley Bearings	PM310, PM312, PM313	568-6422	572-1725	2
	PM620, PM622, PM820, PM822, PM825	569-0346	572-1725	2
Complete Roller Kit	PM310, PM312, PM313	568-6423		1
	PM620, PM622, PM820, PM822, PM825	569-0314		1



## SECONDARY CONVEYOR ROLLERS AND BEARINGS

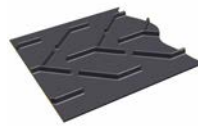
DESCRIPTION	MACHINE MODEL	PAPER KIT PART NUMBER (INCLUDES HARDWARE)	PART NUMBER	QUANTITY
Bunk Rollers	PM310, PM312, PM313	568-6408	541-1681	3
			541-1680	6
	PM620, PM622, PM820, PM822, PM825	569-0351	543-2999	4
			543-3000	8
Trough Rollers	PM310, PM312, PM313	568-6411	541-1679	7
	PM620, PM622, PM820, PM822, PM825	569-0348	543-2998	7
Return Idlers	PM310, PM312, PM313	568-6409	528-5018	3
	PM620, PM622, PM820, PM822, PM825	569-0350	528-5017	3
Guide Rollers	PM310, PM312, PM313	568-6410	541-1678	2
	PM620, PM622, PM820, PM822, PM825	569-5423	541-1678	2
Head Pulley	PM310, PM312, PM313		584-5693	1
	PM620, PM622, PM820, PM822, PM825		640-9027	1
Tail Pulley	PM310, PM312, PM313		386-2406	1
	PM620, PM622, PM820, PM822, PM825		644-6227	1
Tail Pulley Bearings	PM310, PM312, PM313	568-6412	572-1725	2
	PM620, PM622, PM820, PM822, PM825	569-0346	572-1725	2
Complete Roller Kit	PM310, PM312, PM313	568-6413		1
	PM620, PM622, PM820, PM822, PM825	569-0349		1



**1. FLASHING** Rubber conveyor flashing is designed to prevent material leakage while remaining flexible to allow full mobility of the conveyors. All flashing is bolt on for ease of maintenance.

**2. BELT SEALS** Conveyor belt seals are designed with slots to allow for adjustment as the flashing wears. Rubber seals are designed to prevent material leakage while remaining flexible to allow full mobility of the conveyors.

**3. DEFLECTORS** Help retain the material in the conveyor system during operation.



**4. CONVEYOR BELTS** Conveyor belts are robust and designed to efficiently move material out of the machine. They are made with a multi-ply mold and vulcanized into one continuous loop with 32 mm high chevron cleats that wrap around the belt to help move material. It is recommended to replace the flashing when replacing a belt.

**5. APRON** Rubber flashing on the PM310, PM312, and PM313 that interfaces with the hopper flashing at the exit of the primary conveyor creating a chute to channel the asphalt into the bunk of the secondary conveyor.



## PRIMARY CONVEYOR FLASHING AND BELTS

DESCRIPTION	MACHINE MODEL	PAPER KIT PART NUMBER (INCLUDES HARDWARE)	PART NUMBER	QUANTITY
Deflectors	PM310, PM312, PM313	568-6414	523-4554	1
			523-4555	1
			523-4553	1
			541-4639	2
	PM620, PM622, PM820, PM822, PM825	569-5421	499-2412	2
Belt Seals	PM310, PM312, PM313	568-6415	523-6576	1
			522-9006	1
			582-8228	2
			533-6149	2
	PM620, PM622, PM820, PM822, PM825	569-5422	499-2421	2
Hopper Flashing	PM310, PM312, PM313	568-6416	555-7670	1
			533-6148	1
			555-7671	1
	PM620, PM622, PM820, PM822, PM825	569-5420	500-4804	1
Apron	PM310, PM312, PM313	568-6417	555-7668	2
Conveyor Belts	PM310, PM312, PM313		635-9760	1
	PM620, PM622, PM820, PM822, PM825		642-2321	1



## SECONDARY CONVEYOR FLASHING AND BELTS

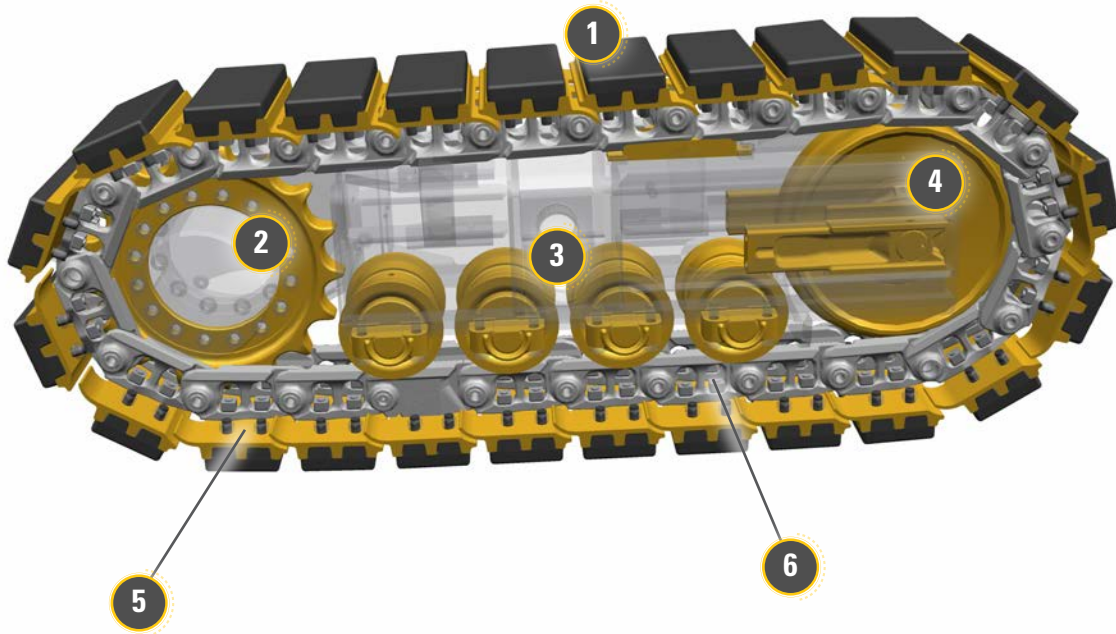
DESCRIPTION	MACHINE MODEL	PAPER KIT PART NUMBER (INCLUDES HARDWARE)	PART NUMBER	QUANTITY
Hopper Flashing	PM310, PM312, PM313		533-6189	1
			533-6181	1
			555-7666	2
			555-7667	1
			533-6183	2
			555-7665	1
			533-6179	1
	PM620, PM622, PM820, PM822, PM825		475-9737	1
			475-9736	2
			475-9738	1
Belt Seals	PM310, PM312, PM313		476-2085	1
			520-5965	2
	520-5966		2	
	PM620, PM622, PM820, PM822, PM825		497-8802	2
			497-8802	2
Complete Flashing Kit	PM310, PM312, PM313	568-6407		1
	PM620, PM622, PM820, PM822, PM825	569-0313		1
Conveyor Belts	PM310, PM312, PM313		635-9762	1
	PM620, PM622, PM820, PM822, PM825		642-2322	1



# TRACK UNDERCARRIAGE

OPTIMAL MANEUVERABILITY AND CONTROL

Cat cold planer undercarriages incorporate many of the track type tractor and excavator undercarriage components to leverage their wear life and performance benefits. Regular inspection of components such as the sprocket, track chain, idler, and rollers help to maintain a uniformly milled surface. Periodically inspect the polyurethane track pads and replace before wearing into the steel track shoe.



**1. TRACK PADS** Polyurethane track pad designed to optimize wear life and prevent track slippage.



**2. SPROCKETS** Uniform surface hardening provides the strength needed to transfer the driving loads from the drive motors to the tracks.



**3. ROLLERS** Equipped with duo-cone seals to eliminate internal wear and provide lifetime lubrication with deep case hardness for long wear life and a high core hardness for strength.



**4. IDLERS** Hardened to provide proper strength for balanced wear life and lower overall operating costs.



**5. TRACK SHOES** Triple grouser track shoes interface with the rubber track pads for optimal track pad retention.



**6. TRACK CHAIN** Sophisticated heat-treat processes provide resistance to wear against the track roller tread and flange for balanced wear life. Cat pin and bushing bores are machined to very close tolerances for superb pin and bushing retention.



## UNDERCARRIAGE COMPONENTS

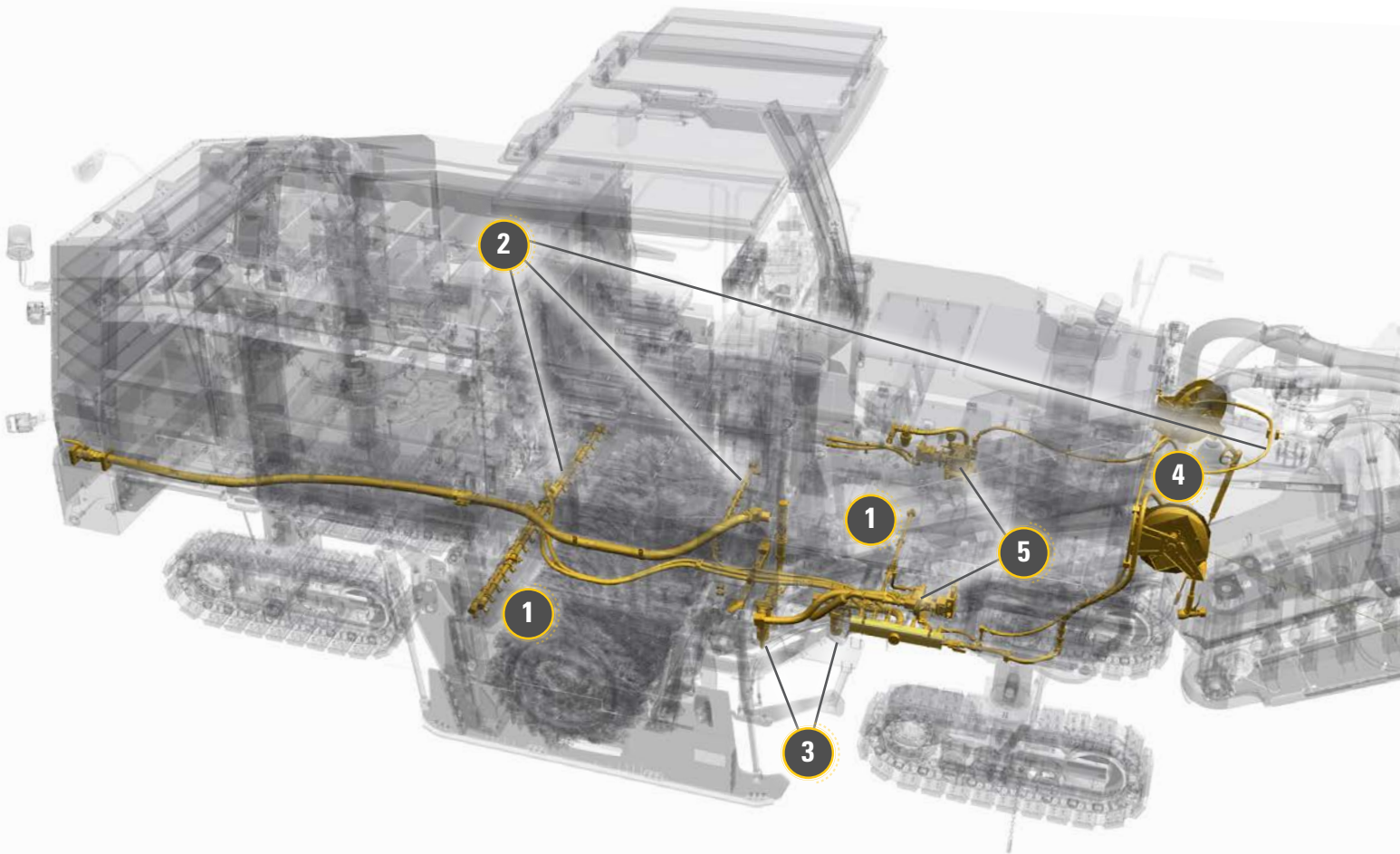
DESCRIPTION	MACHINE MODEL	PAPER KIT PART NUMBER (INCLUDES HARDWARE)	PART NUMBER	QUANTITY / UNDERCARRIAGE
Track Pads	PM310, PM312, PM313 – Rear	569-5441	561-4358	20
	PM310, PM312, PM313 – Front	569-5444	561-4358	18
	PM620, PM622, PM820, PM822, PM825	569-0297	540-0150	24
Track Shoes	PM310, PM312, PM313 – Rear	569-5442	478-8217	20
	PM310, PM312, PM313 – Front	569-5443	478-8217	18
	PM620, PM622, PM820, PM822, PM825	569-5431	383-6914 Master – 385-7548	23 1
Rollers	PM310, PM312, PM313 – Rear	568-6392	480-4148	3
	PM310, PM312, PM313 – Front	568-6390	480-4148	2
	PM620, PM622, PM820, PM822, PM825	569-5432	497-8871	4
Sprocket	PM310, PM312, PM313	568-6388	471-4156	1
	PM620, PM622, PM820, PM822, PM825	569-5433	383-4240	1
Idlers	PM310, PM312, PM313	569-5445	471-8011	1
	PM620, PM622, PM820, PM822, PM825	569-5434	567-8554	1
Wear Pads	PM310, PM312, PM313	569-5446	476-0984	2
	PM620, PM622, PM820, PM822, PM825	569-5435	385-9196	2
Track Chain	PM310, PM312, PM313		481-2481	1
	PM620, PM622, PM820, PM822, PM825		383-4239	1



## SPRAY SYSTEMS

IMPROVES COMPONENT WEAR LIFE AND DUST SUPPRESSION

The spray systems cool components to prolong their wear life and assist with dust suppression. To keep the system clean, replace the filters according to recommended service intervals. Frequently clean the spray bars and nozzles to ensure proper operation and periodically inspect them for damage and clogs.



**1. WATER SPRAY BARS** Positioned on the machine to cool components to optimize wear life and dust suppression.

**2. OPTIONAL WATER SPRAY BARS** The PM620, PM622, PM820, PM822 and PM825 may include two additional spray bars plus additional nozzles as a factory-installed option.



**3. WATER SPRAY FILTERS** Filter the water to prevent clogs and keep the system clean.



**4. WATER HOSE REELS** For the high and low pressure machine wash down systems. Low (right side), High (left side)



**5. WATER SPRAY PUMPS** Optimized for Cat cold planer spray systems.



**SPRAY NOZZLES** Deliver an optimal spray pattern to cool components.



**WATER INLET BASKET STRAINER** Filter to prevent debris from contaminating the water system.



## WASHDOWN AND DUST REDUCTION

DESCRIPTION	MACHINE MODEL	DETAIL	PART NUMBER	QUANTITY	GROUP PART NUMBER (INCLUDES HARDWARE)
Low Pressure Washdown	PM310, PM312, PM313	Water Nozzle	398-8499	1	544-2811
	PM620, PM622, PM820, PM822, PM825	Hose Reel	572-4963	1	591-6023
		Water Nozzle	398-8499	1	
High Pressure Washdown	PM310, PM312, PM313	Water Pump	538-1148	1	577-6255
		Spray Gun	398-6440	1	
		Spray Lance	488-1394	1	
		Spray Tip	488-1395	1	
	PM620, PM622, PM820, PM822, PM825	Water Pump	538-1148	1	374-6811
		Water Filter	161-8211	1	
		Hose Reel	388-3713	1	
		Spray Gun	398-6440	1	
		Spray Lance	488-1394	1	
		Spray Tip	488-1395	1	
Dust Reduction Spray System	PM310, PM312, PM313	Spray Bar	529-8714	1	421-9634
		Spray Bar	529-8712	1	
		Nozzle	517-7244	6	
		Clamp	390-7635	6	
	PM620, PM820	Spray Bar	595-2230	1	594-4055
		Spray Bar	581-8851	1	
		Nozzle	478-2767	24	
		Clamp	478-2766	24	
	PM622, PM822	Spray Bar	595-2257	1	594-4054
		Spray Bar	581-8851	1	
		Nozzle	478-2767	26	
		Clamp	478-2766	26	
	PM825	Spray Bar	595-2276	1	594-4057
		Spray Bar	581-8851	1	
		Nozzle	478-2767	28	
		Clamp	478-2766	28	



## CHAMBER SPRAY ARRANGEMENT

DESCRIPTION	MACHINE MODEL	DETAIL	PART NUMBER	QUANTITY	GROUP PART NUMBER (INCLUDES HARDWARE)
Pump and Conveyor Spray Bar	PM310, PM312, PM313	Water Pump	545-6062	1	381-6468
		Water Filter	490-5490	1	
		Spray Bar	529-8646	1	
		Nozzle	517-7244	2	
		Clamp	390-7635	2	
Conveyor Spray Bar	PM620, PM622, PM820, PM822, PM825	Spray Bar	629-9597	1	568-0080
		Nozzle	478-2767	2	
		Clamp	390-7635	2	
Water Pump and Filters	PM620, PM622, PM820, PM822, PM825	Water Pump	542-1233	1	595-6620
		Water Filter	490-5490	1	
		Water Filter	563-3119	1	
		Screen	390-7765	1	
Chamber Spray Bar	PM310	Spray Bar	524-3063	2	381-6667
		Nozzle	478-2767	10	
		Clamp	390-7635	10	
	PM312	Spray Bar	524-3064	2	381-6672
		Nozzle	478-2767	12	
		Clamp	390-7635	12	
	PM313	Spray Bar	524-3065	1	381-6677
		Spray Bar	524-3063	1	
		Nozzle	478-2767	13	
		Clamp	390-7635	13	
	PM620, PM820	Spray Bar	595-2230	1	381-6672
		Nozzle	478-2767	18	
		Clamp	478-2766	18	
	PM622, PM822	Spray Bar	595-2241	1	381-6672
		Nozzle	478-2767	20	
Clamp		478-2766	20		
PM825	Spray Bar	595-2274	1	381-6672	
	Nozzle	478-2767	22		
	Clamp	478-2766	22		



## GRADE CONTROL

### PRECISE AND REPEATABLE CUTTING RESULTS

The integrated Cat Grade and Slope system for cold planers takes the guesswork out of producing accurate and repeatable cutting results. Contacting (side plate or inboard ski) and non-contacting (sonic) sensors provide multiple grade references for milling accuracy. Consoles can be installed at the operator station and on either side or rear of the machine for ground level access (locations vary by model).



**1. SONIC SENSORS** Optional sonic sensors can be mounted on the side of the machine for grade control reference.



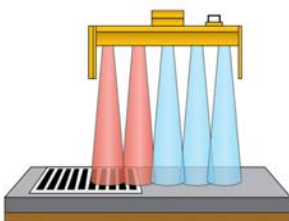
**2. INBOARD SKI SYSTEM** Optional inboard ski can be used as an additional reference point for the grade control system.



**3. DISPLAYS** Touchscreen displays can be mounted on the side or back of the machine or in the operator station to operate the grade control system (locations vary by model).

**4. CONTROLLER** Cat controller required for operation with the grade control system.

Cat Grade and Slope for cold planers allows milling operators to achieve accurate and repeatable cutting results to provide a smooth base for any project. Contacting (side plate or inboard ski) and non-contacting (sonic) sensors provide multiple grade references. Seamlessly swap between multiple grade sensors for uninterrupted accuracy during milling.



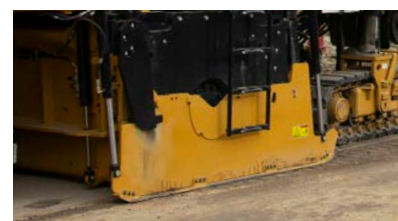
#### SONIC SENSORS

Sensors have five transducers, discard the high and low readings and use the remaining three for a true average reading



#### INBOARD SKI

Position-sensing inboard ski cylinder



#### SIDE PLATES

Position-sensing side plate cylinders



GRADE AND SLOPE SYSTEM				
DESCRIPTION	MACHINE MODEL	DETAIL	PART NUMBER	QUANTITY
Sonic Sensors	PM310, PM312, PM313, PM620, PM622, PM820, PM822, PM825	Sonic Sensor	541-2488	2
		Harness	360-6702	2
		Carrying Case	492-8121	1
Inboard Ski System	PM620, PM622, PM820, PM822, PM825	Wear Ski	590-7785	2
		Mounting Plate	590-5067	2
		Cylinder	390-5232	2
Displays	PM310, PM312, PM313, PM620, PM622, PM820, PM822, PM825	Display	387-9468*	1
	PM310, PM312, PM313	Display – Operator Platform	381-7318*	1
Display Harness	PM310, PM312, PM313	Coiled Harness	528-5461	1
	PM620, PM622, PM820, PM822, PM825	Coiled Harness	519-7973	1
Grade and Slope Controller	PM310, PM312, PM313, PM620, PM622, PM820, PM822, PM825	Control	449-2017	1
		Sensor – Internal	433-6936	1

\* Available with a miscellaneous sales order (MSO). Please contact your Cat dealer to order.

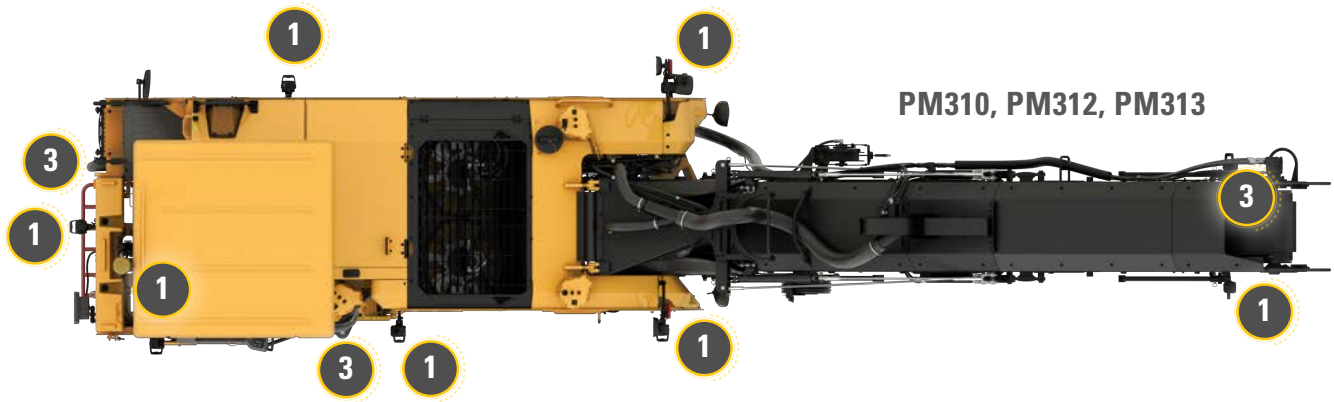


## ENHANCE VISIBILITY

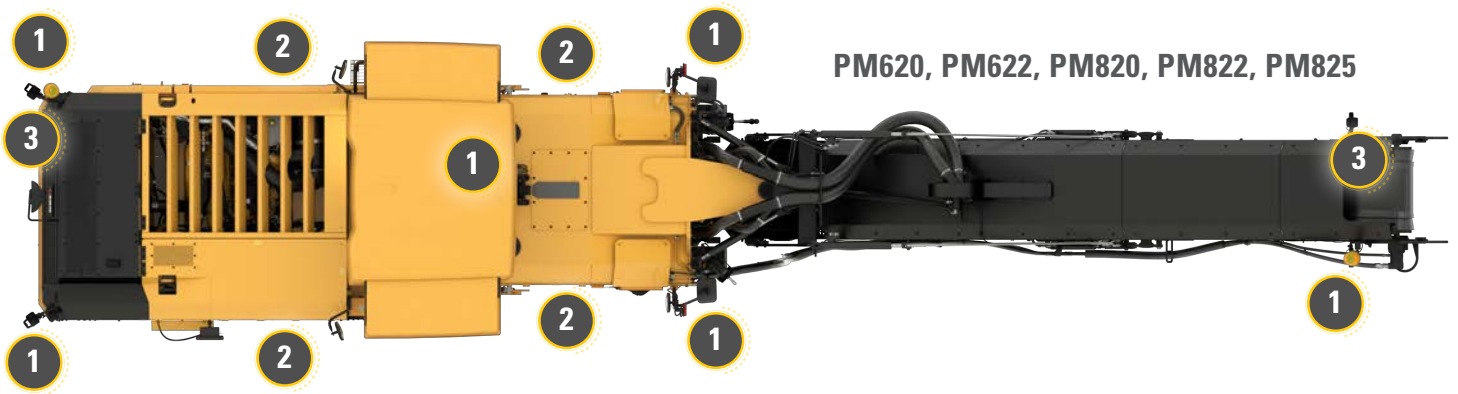
WITH LIGHTING AND CAMERAS

Upgrade your Cat cold planer with lighting packages and camera options.

Optional remote cameras enhance visibility to the cutting edge and conveyor as well as provide visibility to the rear of the machine. Lighting options are available for replacement or to add to the machine for better illumination around the machine during operation.



PM310, PM312, PM313



PM620, PM622, PM820, PM822, PM825



**1. LIGHTING** Various lighting options available to illuminate the machine during operation and maintenance.



**3. CAMERAS** Improve visibility around the machine. Options and locations vary by machine model.



**2. PERIMETER LIGHTS** Optional perimeter lights for additional illumination around the base of the machine. Perimeter lights are not available on all models. **Please check machine PIN plate to identify which models are available with this lighting package.**



**MIRRORS** Attached at various locations around the machine for proper visibility.



## LIGHTING

DESCRIPTION	MACHINE MODEL	DETAIL	PART NUMBER	QUANTITY
Hazard Lights	PM310, PM312, PM313, PM620, PM622, PM820, PM822, PM825	Hazard Light – Mounted on Conveyor and Rear	371-2241	2
	PM620, PM622, PM820, PM822, PM825	Hazard Light – Canopy	378-6901	2
Truck Signal Lights	PM310, PM312, PM313, PM620, PM622, PM820, PM822, PM825	Truck Signal Light – Red	334-8049	2
		Truck Signal Light – Green	321-7871	2
Lamps	PM310, PM312, PM313	Right Head Lamp with Signal	344-3455	1
		Left Head Lamp with Signal	344-3456	1
		Rear Signal Lamp	392-4634	2
		Basic Lamp – License Plate	259-0134	1
		Flood Lamp – Magnetic Mount	594-8849	1
		LED Lamp – Pole Mount	594-5646	8
	PM620, PM622, PM820, PM822, PM825	LED Lamp – Pole Mount	560-1697	10
		LED Lamp – Magnetic Mount	594-8849	1
		Halogen Flood Lamp – Bracket Mounted	219-6485	4
		LED Flood Lamp – Bracket Mounted	601-2214	4
Canopy Lights*	PM620, PM622, PM820, PM822, PM825	Head Lamp – Front and Rear	579-5750	10
		LED Canopy Light Bar	579-7213	4
LED Perimeter Lights*	PM620, PM622, PM820, PM822, PM825	84 cm (33 in) LED Light Bar	568-7859	2
		56 cm (22 in) LED Light Bar	568-7862	3
		43 cm (17 in) LED Light Bar	568-7863	5

\* Available on models with a Build Number of 02B and 02C. Build Numbers are listed on the PIN plate of the machine. Please refer to the Introduction portion of this document for more information on locating PIN plates.

## MIRRORS

MACHINE MODEL	DESCRIPTION	PART NUMBER
PM310, PM312, PM313	Front and Rear Mirror	220-4050
PM620, PM622, PM820, PM822, PM825	Front and Operator Platform Mirror	215-4809
	Rear Mirror	471-4223



## CAMERAS

MACHINE MODEL	DESCRIPTION	DETAIL	PART NUMBER	QUANTITY
PM310, PM312, PM313	Rear Camera	Camera Group	336-6684	1
		Cable Assembly	283-0658	1
		Camera Bracket	488-5576	1
	Conveyor Camera	Camera Group	336-6684	1
		Cable Assembly	283-0658	2
		Camera Bracket	394-2675	1
	Left Hand Drum Edge Camera	Camera Group	336-6684	1
		Cable Assembly	251-8248	1
		Flood Lamp	576-5030	1
		Bracket	543-0458	1
		Bracket	543-0459	1
	Remote Camera	Camera Group	336-6684	1
		Cable Assembly	283-0657	1
		Harness Assembly	398-1930	1
		Magnetic Bracket	418-0232	1
Cut Tracking Camera	Camera Group	336-6684	1	
	Cable Assembly	283-0657	1	
	Bracket	555-7688	1	
	Bracket	593-2552	1	
PM620, PM622, PM820, PM822, PM825	Rear Camera	Camera Group	336-6684	1
		Camera Bracket	396-9665	1
		Harness Assembly	398-1930	1
	Conveyor Camera	Camera Group	336-6684	1
		Camera Bracket	394-2675	1
		Harness Assembly	398-1930	1
		Cable Assembly	274-4477	1
	Remote Camera	Camera Group	336-6684	1
		Cable Assembly	283-0659	1
		Harness Assembly	398-1930	1
		Magnetic Bracket	418-0232	1



# PREVENTATIVE MAINTENANCE

## FOR PEAK PERFORMANCE

Regular preventative maintenance to the engine, hydraulics, fuel and rotor systems is key to keeping your equipment running during the milling season. ***Please refer to your Operation and Maintenance Manual for recommended maintenance intervals and procedures.*** The following tables include common filters and components needed to perform regular service on your equipment.



## PM310, PM312, PM313 PREVENTATIVE MAINTENANCE

INTERVAL (HOURS)	SUBSYSTEM	DESCRIPTION	SERIAL NUMBER PREFIX	PART NUMBER	QUANTITY	
500	Engine	Serpentine Belt	DK9, J63, JHZ, KWA, LJ9,	374-8493	1	
		Advanced Efficiency Engine Oil Filter	NA9, NJX, NM9, NMA, RH8	1R-1808	1	
		Fuel / Water Separator Filter Element	DK9, J63, KWA, LJ9,	500-0481	1	
			NA9, NMA, RH8	436-7077	1	
	Fuel	Fuel Tank Strainer	DK9, J63, JHZ, KWA, LJ9,	9P-7121	1	
		NA9, NJX, NM9, NMA, RH8	DK9, J63, JHZ, KWA,	500-0480	1	
	Rotor	Secondary Fuel Filter	LJ9, NA9, NJX, NM9, RH8	DK9, J63, JHZ, KWA, LJ9,	516-6103	2
		Rotor Drive Belt	NA9, NJX, NM9, NMA, RH8	J63, JHZ, LJ9,	566-9871	1
		Rotor Turning Device Belt	J63, JHZ, LJ9,	NJX, NM9, RH8	571-0404	2
		Rotor Drive Belt with Rotor Turning Device	NJX, NM9, RH8			
1000	Hydraulics	Breather Assembly		207-5997	1	
		Advanced Efficiency Hydraulic Filter	DK9, J63, JHZ, KWA, LJ9,	389-1085	1	
		NA9, NJX, NM9, NMA, RH8	Standard Efficiency Hydraulic Filter	054-1719	1	
2000	Fuel	Fuel Tank Cap Filter Kit	DK9, J63, JHZ, KWA, LJ9,	350-7735	1	
3000	Engine	Coolant Temperature Regulator	DK9, J63, JHZ, KWA, LJ9,	318-0004	1	
		Isolation Seal	NA9, NJX, NM9, NMA, RH8	260-0113	1	
5000	Engine	Exhaust Fluid Injector Gasket Assembly		418-2073	1	
	DEF	DEF Injector Assembly	JHZ, NJX, NM9, NMA	485-9752	1	
		Standard Efficiency DEF Fuel Filter		378-3187	1	
		Diesel Particulate Filter Band Clamp	DK9, J63, JHZ, KWA, LJ9,	346-0335	1	
6000	Engine	Cat ELC® Coolant Extender	DK9, J63, JHZ, KWA, LJ9,	119-5152	1	
10000	DEF	DEF Manifold Filter Gasket	JHZ, NJX, NM9, NMA	391-5262	1	
		DEF Manifold Filter Assembly	JHZ, NJX, NM9, NMA	506-5818	1	
		DEF Manifold High Debris Filter Sock	JHZ, NJX, NM9, NMA	584-8137	1	
		Standard Efficiency DEF Fuel Filter	JHZ, NJX, NM9, NMA	584-8137	1	
When Required	Engine	Primary Air Filter Element	DK9, J63, JHZ, KWA, LJ9,	220-0454	1	
		Secondary Air Filter Element	NA9, NJX, NM9, NMA, RH8	142-1403	1	



PM620, PM622, PM820, PM822, PM825 PREVENTATIVE MAINTENANCE					
INTERVAL (HOURS)	SUBSYSTEM	DESCRIPTION	SERIAL NUMBER PREFIX	PART NUMBER	QUANTITY
500	Engine	Serpentine Belt	3C6, 626, 627, 8RF, AK5, AN8, E8S, EE2, EL6, ESE, FG4, H6S, HN8, JB9, JCF, JFC, LB8, LH9, RL3, SL8, TLZ, TPH, XS6, YLA, YLB, YLC, YLD, YLF	357-2890	1
		Engine Oil Filter Element	3C6, 626, 627, 8RF, AK5, AN8, E8S, EE2, EL6, ESE, FG4, H6S, HN8, LB8, RL3, SL8, TLZ, TPH, XS6, YLA, YLB, YLC, YLD, YLF	500-0483	1
		Fuel / Water Separator Filter Element	3C6, 626, 627, 8RF, AK5, AN8, E8S, EE2, EL6, ESE, FG4, H6S, HN8, LB8, RL3, SL8, TLZ, TPH, XS6, YLA, YLB, YLC, YLD, YLF	436-7077	1
		Advanced Efficiency Engine Oil Filter	JB9, JCF, JFC, LH9	1R-1808	1
	Fuel	Advanced Efficiency Fuel Filter	3C6, 626, 627, 8RF, AK5, AN8, E8S, EE2, EL6, ESE, FG4, H6S, HN8, JB9, JCF, JFC, LB8, LH9, RL3, SL8, TLZ, TPH, XS6, YLA, YLB, YLC, YLD, YLF	1R-0749	1
		Fuel Filter Element	3C6, 626, 627, 8RF, AK5, AN8, E8S, EE2, EL6, ESE, FG4, H6S, HN8, LB8, RL3, SL8, TLZ, TPH, XS6, YLA, YLB, YLC, YLD, YLF	500-0480	1
		Advanced Efficiency Fuel / Water Separator	JB9, JCF, JFC, LH9	326-1643	1
		1000	Hydraulics	Advanced Efficiency Hydraulic Filter	3C6, 626, 627, 8RF, AK5, AN8, E8S, EE2, EL6, ESE, FG4, H6S, HN8, JB9, JCF, JFC, LB8, LH9, RL3, SL8, TLZ, TPH, XS6, YLA, YLB, YLC, YLD, YLF
Breather Assembly	3C6, 626, 627, 8RF, AK5, AN8, E8S, EE2, EL6, ESE, FG4, H6S, HN8, JB9, JCF, JFC, LB8, LH9, RL3, SL8, TLZ, TPH, XS6, YLA, YLB, YLC, YLD, YLF			207-5997	1
Hydraulic Oil Return Filter	3C6, 626, 627, 8RF, AK5, AN8, E8S, EE2, EL6, ESE, FG4, H6S, HN8, JB9, JCF, JFC, LB8, LH9, RL3, SL8, TLZ, TPH, XS6, YLA, YLB, YLC, YLD, YLF			376-1286	1
2000	Engine	Engine Oil Filter Housing Assembly	3C6, 626, 627, 8RF, AK5, AN8, E8S, EE2, EL6, ESE, FG4, H6S, HN8, LB8, RL3, SL8, TLZ, TPH, XS6, YLA, YLB, YLC, YLD, YLF	500-0482	1
	Fuel	Fuel Tank Cap Filter Kit	3C6, 626, 627, 8RF, AK5, AN8, E8S, EE2, EL6, ESE, FG4, H6S, HN8, JB9, JCF, JFC, LB8, LH9, RL3, SL8, TLZ, TPH, XS6, YLA, YLB, YLC, YLD, YLF	350-7735	1
	Hydraulics	Pump Drive Oil Breather	3C6, 626, 627, 8RF, AK5, AN8, E8S, EE2, EL6, ESE, FG4, H6S, HN8, JB9, JCF, JFC, LB8, LH9, RL3, SL8, TLZ, TPH, XS6, YLA, YLB, YLC, YLD, YLF	258-2829	1
		Advanced Efficiency Hydraulic Oil Filter	3C6, 626, 627, 8RF, AK5, AN8, E8S, EE2, EL6, ESE, FG4, H6S, HN8, JB9, JCF, JFC, LB8, LH9, RL3, SL8, TLZ, TPH, XS6, YLA, YLB, YLC, YLD, YLF	389-1085	1

Continued



PM620, PM622, PM820, PM822, PM825 PREVENTATIVE MAINTENANCE					
INTERVAL (HOURS)	SUBSYSTEM	DESCRIPTION	SERIAL NUMBER PREFIX	PART NUMBER	QUANTITY
3000	Engine	Isolation Seal	3C6, 626, 627, 8RF, AK5, AN8, E8S, EE2, EL6, ESE, FG4, H6S, HN8, JB9, JCF, JFC, LB8, LH9, RL3, SL8, TLZ, TPH, XS6, YLA, YLB, YLC, YLD, YLF	242-9537	1
		Water Temperature Regulator Seal	3C6, 626, 627, 8RF, AK5, AN8, E8S, EE2, EL6, ESE, FG4, H6S, HN8, JB9, JCF, JFC, LB8, LH9, RL3, SL8, TLZ, TPH, XS6, YLA, YLB, YLC, YLD, YLF	341-1429	1
		Water Temperature Regulator Lip Seal	3C6, 626, 627, 8RF, AK5, AN8, E8S, EE2, EL6, ESE, FG4, H6S, HN8, JB9, JCF, JFC, LB8, LH9, RL3, SL8, TLZ, TPH, XS6, YLA, YLB, YLC, YLD, YLF	3S-9643	2
		Coolant Temperature Regulator	3C6, AK5, AN8, E8S, EE2, ESE, FG4, H6S, JB9, JFC, LB8, SL8, TLZ, TPH, XS6	248-5513	2
			626, 627, 8RF, EL6, HN8, JCF, RL3	247-7133	1
5000	Engine	Exhaust Fluid Injector Gasket		418-2073	1
	DEF	Standard Efficiency DEF Fuel Filter	E8S, EE2, FG4, JB9, JFC, LB8, LH9, TPH, XS6	378-3187	1
		DEF Injector Assembly		485-9752	1
		DEF Filter Clamp		371-1871	1
6000	Engine	Cat ELC Coolant Extender	3C6, 626, 627, 8RF, AK5, AN8, E8S, EE2, EL6, ESE, FG4, H6S, HN8, JB9, JCF, JFC, LB8, LH9, RL3, SL8, TLZ, TPH, XS6, YLA, YLB, YLC, YLD, YLF	119-5152	2
		Coolant Conditioner Test Kit		4C-9301	1
10000	DEF	DEF Manifold Gasket		391-5262	1
		DEF Manifold Filter Assembly	E8S, EE2, FG4, JB9, JFC, LB8, LH9, TPH, XS6	506-5818	1
		DEF Manifold High Debris Filter Sock		584-8142	1
		Standard Efficiency DEF Fuel Filter		584-8137	1



## VISIONLINK™

### ASSET MONITORING AND FLEET MANAGEMENT

VisionLink™ provides actionable data insights for all assets—regardless of fleet size or equipment manufacturer.\* Review equipment data from your desktop or mobile device to maximize uptime and optimize assets. Dashboards provide information such as hours, miles, location, idle time, and fuel utilization. Make informed decisions that lower costs, simplify maintenance, and improve safety and security on your jobsite.

\* Data field availability can vary by equipment manufacturer. VisionLink™ subscription required. Availability may vary by region, consult your Cat Dealer for more details.



# VISIONLINK™

## EQUIPMENT FEATURES

---

With tracking of every asset in your fleet, the equipment management features within VisionLink empower you to make informed, data-based decisions to help reduce operating costs.

### ENTIRE FLEET VISIBILITY

- + Get actionable data insights for all assets, regardless of make.
- + Manage mixed OEM fleets with a single interface.
- + Diesel, gas and electric equipment.
- + Construction equipment, engines, generators, on- and off-highway trucks.
- + Owned, rented or leased assets.

### ASSET TRACKING

- + Track location, operating hours, fuel levels, health issues, and overall utilization.

### HELP INCREASE UPTIME

- + Monitor equipment health, fault codes, fluid analysis, and inspection due dates.
- + Reduce unplanned downtime with critical alerts.
- + Order parts and schedule service within the platform.

### HELP OPTIMIZE UTILIZATION

- + Manage by projects, groups, or geofences.
- + Set utilization targets and monitor performance.

## PRODUCTIVITY FEATURES

---

### FOR PM620, PM622, PM820, PM822, PM825 COLD PLANERS

Productivity features\*\* within VisionLink gathers, analyzes and summarizes detailed data to provide actionable insights into jobsite productivity and equipment utilization.

### REPORTING

- + Track how much milling occurs each day (hours and distance)
- + Visualize milled locations, excess travel and machine stops
- + Eliminate the need for manual data gathering

### ANALYSIS

- + Evaluate detailed utilization data to better understand productivity
- + Track and eliminate unnecessary fuel burn
- + Compare operations between shifts, machines and projects

### ACTION

- + Identify and reduce unnecessary waiting (i.e. start-up, waiting for trucks)
- + Achieve longer, more productive cutting cycles
- + Improve estimating for future projects
- + Optimize profit by increasing efficiency and reducing costs

**NOTE:** Cat Payload for determining quantity of material milled is not available for cold planers.

\*\* A VisionLink PerformancePro subscription is required to access Productivity features.

---

## STEPS TO GET STARTED

### 1 CONTACT YOUR CAT DEALER

To ensure the successful integration of VisionLink, consult with your Cat dealer during the setup process.

### 2 CONNECT YOUR ASSETS

For new Cat equipment, activate the built-in hardware. For older Cat assets and other OEM brands, install Product Link™ devices or integrate data from existing OEM or third-party telematics providers using APIs.

### 3 CHOOSE A SUBSCRIPTION

Obtain a VisionLink subscription (per machine). Your Cat Dealer can help determine the best subscription to fit your business needs.

### 4 IMPLEMENT CHANGE MANAGEMENT

Utilize data-driven insights by educating users on the platforms and implementing change management.



SHOP ONLINE AT [WWW.PARTS.CAT.COM](http://WWW.PARTS.CAT.COM) OR CONTACT YOUR LOCAL CAT DEALER

**LET'S DO THE WORK.™**

QEXQ3131-01 (05/2026)  
Replaces QEXQ2832

© 2026 Caterpillar. All Rights Reserved. CAT, CATERPILLAR, LET'S DO THE WORK, their respective logos, "Caterpillar Corporate Yellow", the "Power Edge" and Cat "Modern Hex" trade dress as well as corporate and product identity used herein, are trademarks of Caterpillar and may not be used without permission.

VisionLink is a trademark of Caterpillar Inc., registered in the United States and in other countries.

