

TREE SCOOP



Models

900 mm (36 in)

Machine Compatibility

226D3-299D3

903D, 906-908

Current machines listed. Machine model availability and attachment vary by region. Contact your local Cat® dealer for exact compatibility and availability.



The Cat® tree scoop is designed for handling shrubs and small trees at nursery sites and in landscaping applications. The spade profile can dig and scoop up to a 901 mm (36 in) diameter, allowing easy transport or transplant of trees and much more.

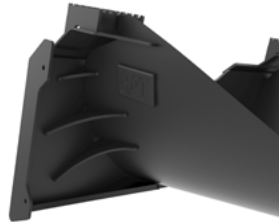
FEATURES

FLATTENED TIP



Offers the ability to cut a root for easy removal of a tree.

RUGGED DESIGN



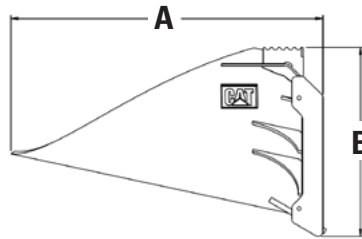
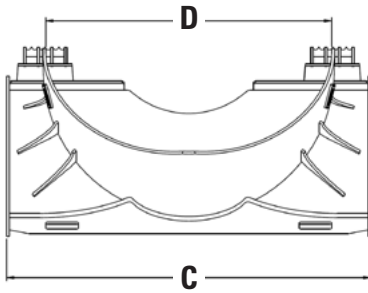
Welded gussets and thicker plates provide increased durability.

SERRATED STEP



Allows for easy ingress and egress of the cab.

DIMENSIONS



Model	900 mm (36 in)
A Overall Length	899 mm 35.4 in
B Overall Height	594 mm 23.4 in
C Overall Width	1148 mm 45.2 in
D Working Width	900 mm 36 in
Weight	142.6 kg 314.4 lb
Interface Type	Skid Steer Coupler



For more complete information on Cat products, dealer services and industry solutions, visit us on the web at www.cat.com

AEHQ8422 (12-2022)
(Global)

© 2022 Caterpillar. All Rights Reserved.

Materials and specifications are subject to change without notice. Featured machines in photos may include additional equipment. See your Cat dealer for available options.

CAT, CATERPILLAR, LET'S DO THE WORK, their respective logos, "Caterpillar Corporate Yellow," the "Power Edge" and Cat "Modern Hex" trade dress as well as corporate and product identity used herein, are trademarks of Caterpillar and may not be used without permission.
www.cat.com www.caterpillar.com

