



UNDERGROUND MINING TRUCK

CAT® AD30 PRICELIST GUIDE

JANUARY 2023



DISCLAIMER

This document is based on the universal price list for the AD30. Every attachment may not be available in your region due to regulatory compliance or compatibility issues.

Please refer to the price list for your geographical area to ensure that the attachment is offered for your region before attempting to order.

<https://pricelist.cat.com/priceList/machine/byModel>

CATERPILLAR MACHINE PRICE LIST

AD30 MF

AD30 UNDERGROUND MINING TRUCK
RAYONG, THAILANDShip Weight
lbs
Lin Price
At Factory

Standard Equipment:

POWERTRAIN

Brake retarder control, automatic
Brakes
-all wheel disc
-oil cooled
-multiple-disc (SAFK)
Control throttle shifting
Fogging
-Cat C15 6 cylinder diesel engine
-Air-to-air aftercooler (ATAAC)
Four wheel drive
Fuel priming aid
Gear blackout with tray up, programmable
Ground speed limiting, programmable
Parking brakes, four wheels
Preheater, engine air intake
Torque converter with automatic lockup
Transmission, automatic planetary
power shift (4P/1K)

ELECTRICAL

Alarm, rewarning
Alternator, 95 amp
Disconnect switch, 2 post, ground level
Electric starting, 24-volt
Lights
-Headlights with dimmer switch
-Brake and tail lights
-Overwarning light, automatic when
reverse gear selected
Work light, rear, cab mounted
Nosepiece GV, auxiliary start
Shutdown switch, ground level

OPERATOR ENVIRONMENT

Cab, HOVIC/HOVC certified
Caterpillar Electronic Monitoring System
(CEMS), dash instrument panel
Operator Presence System
Automatic Brake Application (ABA)
Light, warning, residual brake
Mirror, rear view
Seat, suspension operator seat with
retractable seat belt
Seat, trainer/passenger with seat belt
Steering wheel, tilt/telescopic
Turn signal indicators

TIRES, RIMS, AND WHEELS

Tires must be selected from the
Mandatory Attachments section.
Rims (set of 4):
-3 piece
-tubeless

OTHER STANDARD EQUIPMENT

Anglers, oil sample
Alarm, tray up
Belly guards
Cap, radiator, manual release
Catalytic exhaust purifier/muffler
Cover, exhaust
Handholds
Handrails
Hump body
Hewall
Hitch, articulated and oscillated
Lifting legs, frame
Spill Guard, front, for body
Tow pin, front and rear

MANDATORY SECTION

CATERPILLAR MACHINE PRICE LIST

AD30 MF

USE	REF NO.	LANE 3 MANDATORY	Ship Weight lbs	List Price At Factory
LANE SELECTION				
	OP-9003	LANE 3 ORDER	0	NC
POWERTRAIN				
<i>TRANSMISSION</i>				
Electronically lock out to selected gear.				
	OP-1897	TRANSMISSION, 3 GEARS	0	NC
		Max Speed 12.9 mi/h (20.8 km/h)		
	OP-1898	TRANSMISSION, 4 GEARS	0	NC
		Max Speed 22.8 mi/h (36.7 km/h)		
<i>ENGINE</i>				
Current engines are CANMET certified and are MSHA compliant. For more information, please contact your Regional Commercial Representative.				
L	467-1138	ENGINE, VENTILATION REDUCTION	0	NC
		Ventilation Reduction Engine - offers reduction in particulate matter exhausted whilst maintaining low overall emission levels. REQUIRES: 335-4360 EXHAUST, PURIFIER, MUFFLER CANNOT BE USED WITH: Turkey Dealers		
L	467-1139	VR ENGINE, FLOW THRU READY	0	NC
		Ventilation Reduction - Flow Thru Ready engine: A VR engine designed to be used with a flow thru diesel particulate filter exhaust. Offers further reductions in particulate matter exhausted whilst still maintaining low overall emission levels. REQUIRES: 437-2542 PARTICULATE FILTER, FLOW THRU CANNOT BE USED WITH: Turkey Dealers		
L	467-1136	ENGINE, TIER 3	0	NC
		Meets EPA Tier 3 emissions standards. REQUIRES: 335-4360 EXHAUST, PURIFIER, MUFFLER REQUIRED BY: Turkey Dealers		

POWERTRAIN – GEAR SELECTION

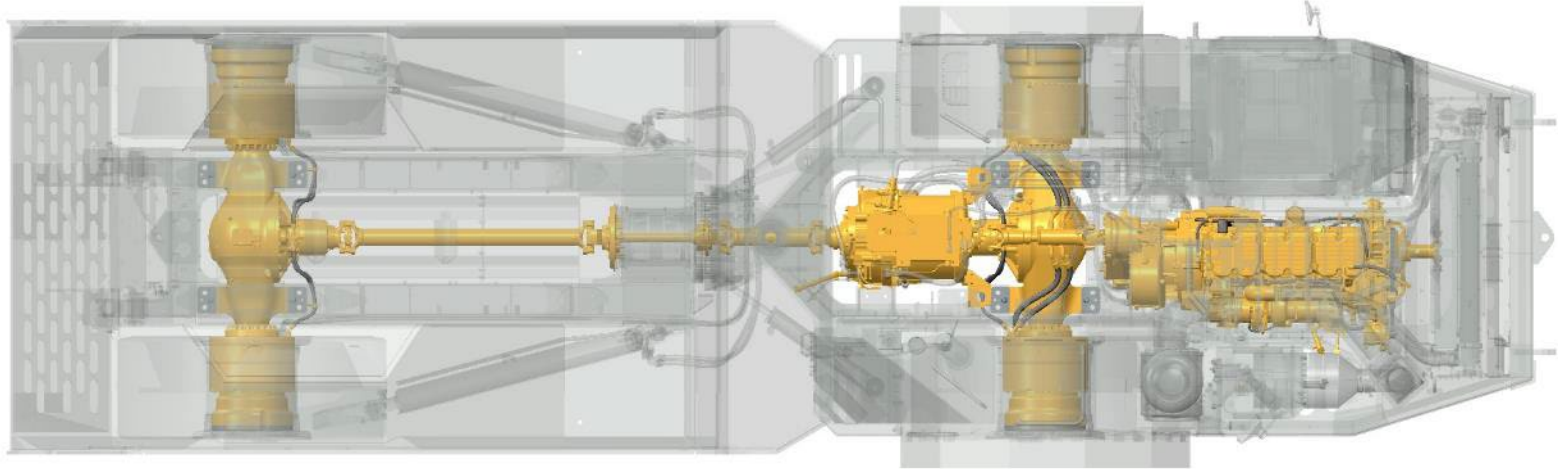
0P-1897 TRANSMISSION, 3 GEARS

Max Speed 20.8 km/h (12.9 mi/h)

0P-1898 TRANSMISSION, 4 GEARS

Max Speed 36.7 km/h (22.8 mi/h)

- Transmission set up options available from factory
- Configured using Caterpillar Electronic Technician (ET) service tool.
- Dealer or customer can adjust using ET service tool anytime if required.



POWERTRAIN – ENGINE SELECTION

467-1138 ENGINE, VENTILATION REDUCTION

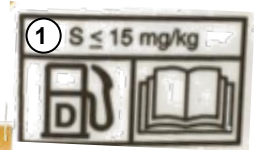
offers reduction in particulate matter exhausted whilst maintaining low overall emission levels.

① 467-1139 VR ENGINE, FLOW THRU READY

A VR engine designed to be used with a flow thru diesel particulate filter exhaust. Offers further reductions in particulate matter exhausted whilst still maintaining low overall emission levels.

467-1136 ENGINE, TIER 3

Meets EPA Tier 3 emissions standards.



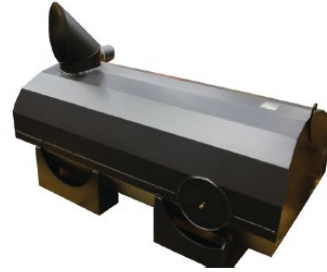
AD30

EXHAUST

437-2542 PARTICULATE FILTER, FLOW THRU

A diesel particulate filter with flow thru technology, designed for use with VR Flow Thru Ready engines. The filter compliments the engine by further reducing particulate matter exhausted by greater than 50 percent on selected models.

REQUIRES: the use of 15ppm Ultra Low Sulphur diesel and the use of CJ-4 low ash engine oil



335-4360 EXHAUST, PURIFIER, MUFFLER



CAB

The operator station has integrated into its construction a ROPS - Roll Over Protective Structure and FOPS - Falling Object Protective Structure. This structure is resiliently mounted to the frame, reducing vibration to the operator for a more comfortable ride.

① 262-6915 CAB, ROPS/FOPS ENCLOSED

Sound suppressed enclosed cab provides a quiet, comfortable and secure working environment. Large window openings offer excellent visibility. Enclosed cab air conditioning system provides fresh, pressurized, filtered air. The system can produce either a cool or heated environment.

Includes salt resistant A/C, heater, passenger/trainer seat, radio ready.

② 262-6927 ROPS/FOPS, OPEN

Open cab that has ROPS / FOPS protection built in. Includes passenger/trainer seat, radio ready.

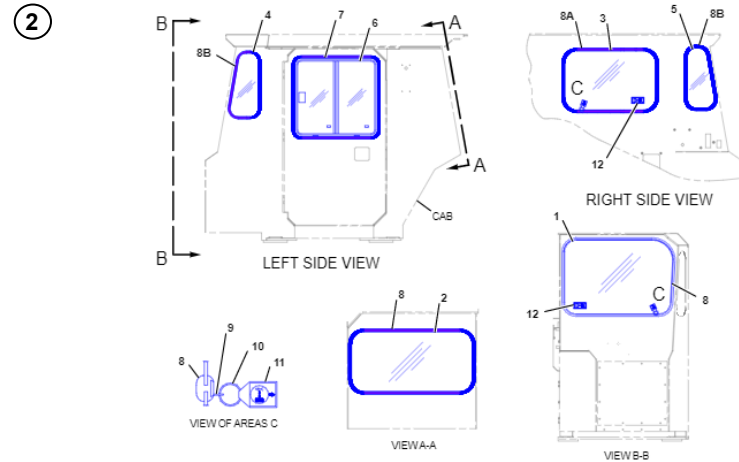
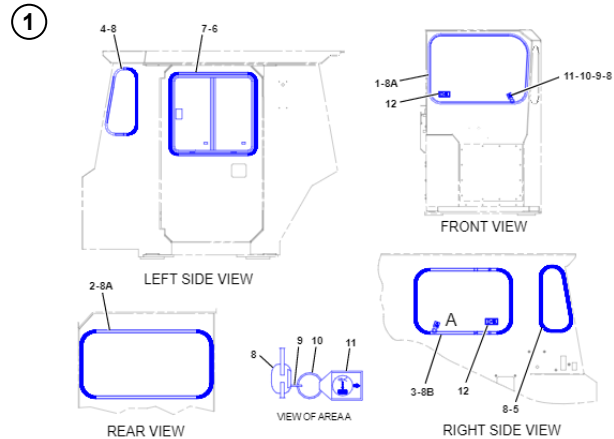


WINDOW

① 259-9316 WINDOW, SINGLE PANE

② 326-7116 WINDOW, DUAL PANE

Provides improved cabin insulation for extreme ambient temperatures and noise reduction.



LIGHTING

① 462-2203 LIGHTING, HALOGEN

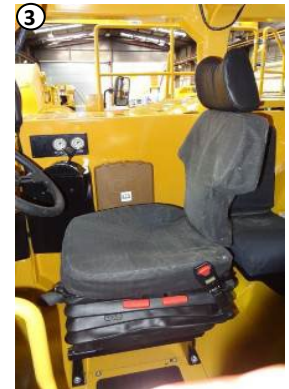
② 462-2204 LIGHTING, LED

Cat LED Work Lights are designed for applications where long service life and high durability are important. With low power consumption, intense illumination, and extremely long life, Cat LED Work Lights are suitable for a wide variety of heavy duty applications. The most significant advantage that LED lights have over traditional headlights is the visibility they provide. LED lights produce a bright white, clean, uniform light that turns night into day.



OPERATOR ENVIRONMENT – SEAT

① 366-4076, SEAT, CAT COMFORT TLV2, CLOTH	② 366-4075 SEAT, CAT COMFORT TLV2, VINYL	③ 231-0349 SEAT, TEE, SUSPENSION, MECHANICAL
<p>The TLV2 seat features an electric adjustable air suspension system which allows the operator to adjust the suspension damping ratio based on operating conditions. The seat back is designed to support the operator and the suspension is designed to reduce vertical and lateral motion for optimum comfort. Thick cloth covered cushions reduce pressure on lower back and thighs and a wide retractable seat belt provides a secure, comfortable restraint.</p>	<p>The TLV2 seat features an electric adjustable air suspension system which allows the operator to adjust the suspension damping ratio based on operating conditions. The seat back is designed to support the operator and the suspension is designed to reduce vertical and lateral motion for optimum comfort. Thick vinyl covered cushions reduce pressure on lower back and thighs and a wide retractable seat belt provides a secure, comfortable restraint.</p>	<p>Ergonomically designed, fully adjustable mechanical suspension seat provides optimal driving position and operator comfort and support. The T-bar design of the seat back allows the operator to be seated comfortably without the need to remove any Personal Protective Equipment. Adjustments are seat height, weight, fore/aft, cushion tilt, back tilt and lumbar.</p>
<p>ONLY FOR USE WITH: 262-6915 CAB, ENCLOSED, ROPS/FOPS</p>		<p>CANNOT BE USED WITH: Turkey Dealers</p>



AD30

SECONDARY STEERING

229-5613 LINES, STEERING STANDARD

273-1236 LINES, SECONDARY STEERING

Provides a ground speed driven supplemental steering pump. The secondary steering system will automatically activate if there is a failure of the primary steering system.



AD30

BRAKING SYSTEM

- ① 462-0842 COVER, NO BRAKE PRESSURE GAUGE
- ② 240-0128 GAUGE, PRESSURE, BRAKE



FUEL - FLUIDS

0P-6823 COOLANT, STANDARD

439-2365 COOLANT, ARCTIC

For use to -50C (-58F)

Coolant blend only, no additional machine hardware changes.

REQUIRES 0P-4386 Arctic Fuel.

0P-4387 FUEL, DIESEL, STANDARD

0P-4386 FUEL, ARCTIC

Arctic blended fuel for use during shipping of machine to climates down to -45C (-49F). Fuel blend only, no additional machine hardware changes. Also an ultra-low sulphur diesel fuel (10ppm)

REQUIRED BY: 437-2542 PARTICULATE FILTER, FLOW THRU

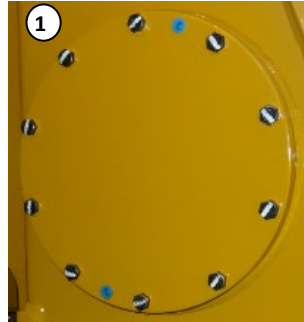
Note: Arctic Coolant & Fuel fluids are installed for shipped & transportation requirements through cold climates. Machine with arctic fluids can still be operated in + temperatures
Fuel Will be shipped with approximately 130 Litres (34 Gallons)

FUEL ADAPTERS

① **321-4736 FUEL TANK, SINGLE, STD ADAPTER**

② **321-4737 FUEL TANK, SINGLE, FAST FILL**

Provides ground level gravity and ground level accessible fast fill feature with automatic shut-off for fast fill fueling. Eliminates spills and overfilling.



TIRE OPTIONS

The TKPH (ton kilometers per hour) ratings or average speed per hour settings listed for some tire options are an informational guideline only and are sourced directly from the manufacturer. All attachments (OEM and aftermarket) and their weight to arrive at the final calculation of this rating. Consult your local tire dealer for exact ratings based upon the unit in its final configuration.

① **224-4615 TIRE, 26.5 X 25, VSNT, BRIDGESTONE**

Bridgestone Radial. V-Steel N-Traction. Non directional traction pattern. Wide tread to minimize sidewall cut. Manufacturer suggested TKPH rating = 232.

② **183-9440 TIRE, 26.5 X 25, VSDL, BRIDGESTONE**

Bridgestone Radial. V-Steel D-Lug. Extra deep tread designed for severe and rocky surfaces, excellent traction and stability. Extra sidewall protection. Manufacturer suggested TKPH rating = 96.



AD30

EMERGENCY PARK BRAKE

421-4361 SWITCH, PUSH, PARKING BRAKE

421-4363 SWITCH, PULL, PARKING BRAKE

Push/Pull to engage park brake function. Push the parking brake control knob inward in order to engage the parking brake. To be used after the machine has stopped.



BATTERY SHUTDOWN

- ① 255-0993 BATTERY ISOLATION, STD SW
- ② 490-5951 BATTERY ISOLATION, STD, CAB SW
- 309-2419 BATTERY ISOLATION, ALT SW
- 490-5952 BATTERY ISOLATION, ALT, CAB SW



AD30

LUBRICATION, CENTRAL

- ① **242-0481 LUBRICATION, CENTRAL, DUMP**
247-8358 LUBRICATION, CENTRAL, EJECTOR

Manual grease points located at center hitch for convenient manual lubrication.



LUBRICATION, AUTOMATIC

- ① 259-0226 LUBRICATION, AUTOMATIC, DUMP
- ② 259-0227 LUBRICATION, AUTOMATIC, EJECTOR

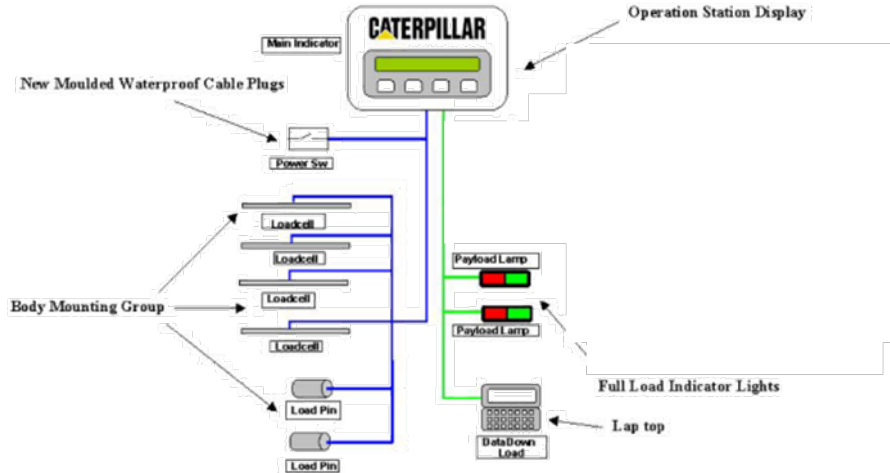
Provides an automated lubrication system. The controller is supplied by 24-volt power from the machine electrical system. An adjustable timer dispenses grease at predetermined intervals to various components.



TRUCK PAYLOAD MANAGEMENT SYSTEM (TPMS)

486-9882 PAYLOAD MEASUREMENT, ENCL ROPS

486-9883 PAYLOAD MEASUREMENT, OPEN ROPS



AD30

TRUCK PAYLOAD MANAGEMENT SYSTEM (TPMS)

- ① 246-0804 BODY, MOUNTING NO PAYLOAD
- ② BODY, MOUNTING PAYLOAD (included in Payload selection)



BODIES – INSTALLED

Dump Bodies

613-7031 BODY AR, DUMP, 11.3 m³ (14.8 yd³)

613-7034 BODY AR, DUMP, 14.4 m³ (18.8 yd³) (Std)

613-7036 BODY AR, DUMP, 17.5 m³ (22.9 yd³)

613-7037 BODY AR, DUMP, 16.8 m³ (21.9 yd³) (WIDE BODY)

Ejector Bodies

Includes 8mm impact liners (welded to the inside of the body to provide additional protection from loading impact wear)

613-7028 BODY AR, EJECTOR, 15.2 m³ (19.9 yd³) (US Only)

613-7027 BODY AR, EJECTOR, 15.2 m³ (19.9 yd³) (International)

613-7030 BODY AR, EJECTOR, 16.8 m³ (21.9 yd³) (US Only)

613-7029 BODY AR, EJECTOR, 16.8 m³ (21.9 yd³) (International)



AD30

AXLES

379-9766 AXLE, FRONT STANDARD

379-9768 AXLE, REAR STANDARD

379-9767 AXLE, FRONT WIDE BODY

379-9769 AXLE, REAR WIDE BODY

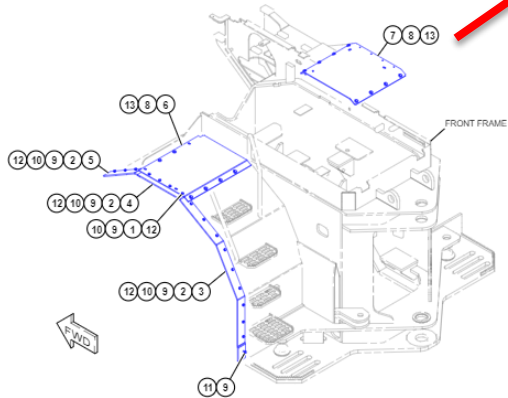


AD30

FENDERS

234-9718 FENDER, FRONT, STANDARD

370-2785 FENDER, FRONT, WIDE BODY



DECALS

351-1165 DECALS, FILM, US

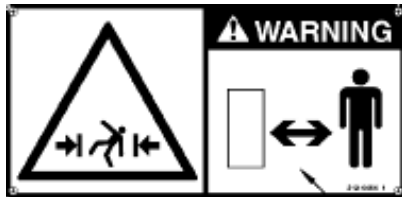
The word "WARNING" is on picto decals for US.

346-2551 DECALS, FILM, INTERNATIONAL

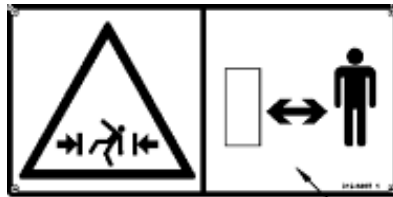
Symbols only are on picto decals for International.



US



Int



OPTIONAL SECTION

CATERPILLAR MACHINE PRICE LIST

AD30 MF

USE	REF NO.	LANE 3 OPTIONAL	Ship Weight lbs	List Price At Factory
-----	---------	-----------------	-----------------	-----------------------

OPERATOR ENVIRONMENT

CAB AND OPERATOR OPTIONS (May Select)

L	370-2752	COVER, OPERATOR SEAT 0 ONLY FOR USE WITH: 366-4076 SEAT, CAT COMFORT TLV2, CLOTH 366-4075 SEAT, CAT COMFORT TLV2, VINYL		\$458
L	266-8112	COVER, COMPANION SEAT 0		\$458
L	172-6995	COVER, TEE SEAT 0 ONLY FOR USE WITH: 231-0349 SEAT, TEE, SUSPENSION, MECHANICAL		\$444
L	224-9470	CONTROL, IDLE TIMER 0 The function of the idle timer controller is to provide a timed period of idle for cooling (three minutes) before engine shutdown when the engine start switch is turned to the OFF position. The idle timer will activate whenever the engine start switch is turned from the ON position to the OFF position. CANNOT BE USED WITH: 266-2027 FIRE SUPPRESSION, FOAM		\$1,545
L	484-6956	DUCT, AIR, FLOOR DIVERTER 0 The diverter duct channels hot or cold air from the air conditioning unit, towards the cab floor for circulation. ONLY FOR USE WITH: 262-6915 CAB, ENCLOSED, ROPS/FOPS		\$850

CAMERA (May Select One)

Provides a color camera used to show the view behind the machine and enhance the operator's visibility of his surroundings. The single camera system is compact, rugged, reliable and extremely simple to use. The color camera mounted on the rear of the machine, is connected to an LCD display mounted to the front dash on the right hand side, and is designed to have a sharp, clear picture.

L	236-7812	CAMERA, COLOR, CAB ENCL 0 ONLY FOR USE WITH: 262-6915 CAB, ENCLOSED, ROPS/FOPS REQUIRED BY: Turkey Dealers		\$8,340
L	313-3291	CAMERA, COLOR, CAB OPEN 0 ONLY FOR USE WITH: 262-6927 CAB, OPEN, ROPS/FOPS		\$8,340

AD30

SEAT COVERS

- ① **370-2752 COVER, SEAT**
- ② **266-8112 COVER, SEAT, COMPANION**
- ③ **172-6995 COVER, SEAT (TEE SEAT)**
(same groups as AD45)



AD30

OPERATOR ENVIRONMENT

- ① 215-4807 VISOR, SUN
- ② 224-9470 CONTROL, (IDLE TIMER)
484-6956 DUCT, AIR, FLOOR DIVERTOR



AD30

REVERSE CAMERA

236-7812 CAMERA, COLOR, CAB, ENCLOSED

313-3291 CAMERA, COLOR, CAB, OPEN



NOTE: For protection during shipping, the camera is removed from the machine and packaged in a box which is welded into the truck body.

TIRE / RIMS OPTIONS

475-0572 RIM, SPARE, TUBELESS (1)

417-9081 RETAINER, RIM, SPARE, (1)

515-9647 IDENTIFICATION, RIM (1)

260-8943 IDENTIFICATION, RIM (4)

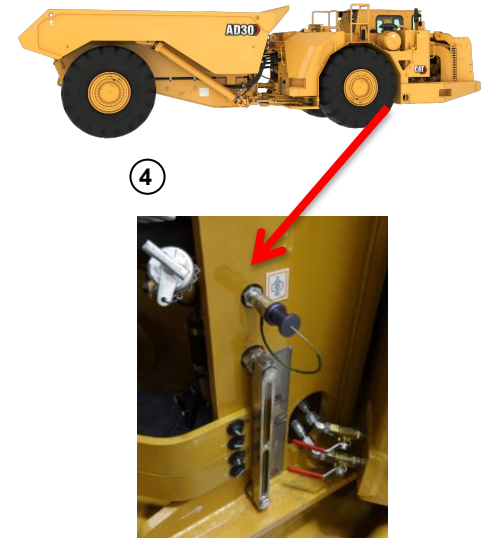
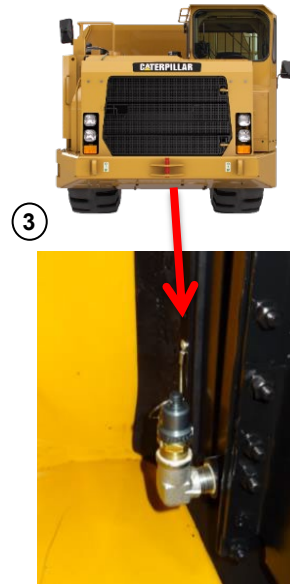
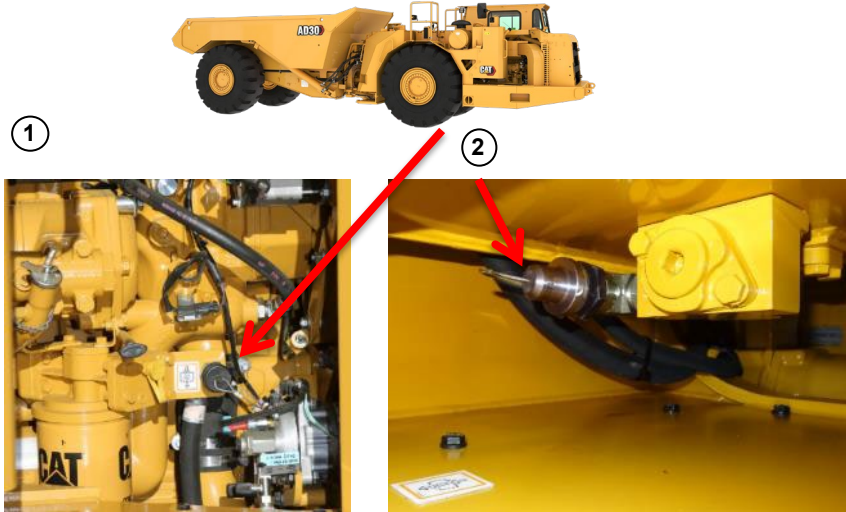


AD30

FAST FILL AND EVACUTATION SYSTEMS

- ① 236-5708 ENGINE, FAST FILL
- ② 234-3175 HYDRAULIC, FAST FILL
- ③ 231-3964 RADIATOR, FAST FILL
- ④ 231-3979 TRANSMISSION, FAST FILL

Wiggins Fast Fill and Evacuation ports reduce daily maintenance times with fast fill connections for implement oil, steering oil, transmission oil, engine oil and coolant. Wiggins service points are located at individual points on unit, NOT in a centralized service center.



AD30

FIRE SYSTEM

266-2027 FIRE SUPPRESSION, FOAM

System is water based and not suitable for sub-zero conditions.
System operating temperature range is 0-55 degrees Celsius.
(32 to 131 deg Fahrenheit).



FIRE SYSTEM

- ① 213-1481 FIRE SUPP, ENGINE SHUTDOWN
- ② 224-9471 FIRE SUPPRESSION, IDLE TIMER



The function of the fire suppression control is to cause a delayed engine shutdown when the fire system is activated. Once activated the engine will stop after a six second delay. Also incorporates engine shutdown switch which allows the engine to shutdown immediately. A system re-set button is used to override the fire suppression control so that the machine can be moved after discharge of the fire suppression system and loss of system pressure.

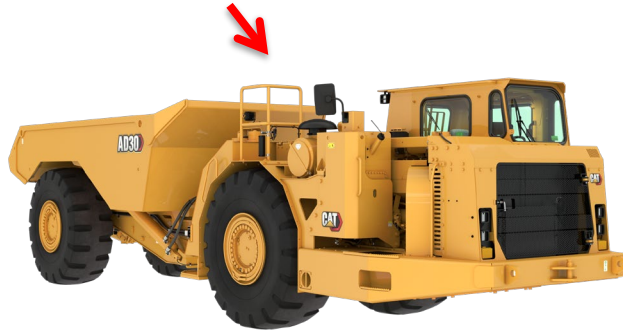
AD30

HANDRAIL EXTENSION



473-2616 EXTENSION, HANDRAIL

Required for Canadian region only. Meets Ontario Regulations for minimum handrail height of 910mm.



BODIES – NOT INSTALLED

Dump Bodies

246-0806 BODY AR, DUMP, 11.3 m³ (14.8 yd³)

246-0811 BODY AR, DUMP, 14.4 m³ (18.8 yd³) (Std)

246-0790 BODY AR, DUMP, 17.5 m³ (22.9 yd³)

379-9770 BODY AR, DUMP, 16.8 m³ (21.9 yd³)

Ejector Body

613-7028 BODY AR, EJECTOR, 15.2 m³ (19.9 yd³) (US Only)

613-7027 BODY AR, EJECTOR, 15.2 m³ (19.9 yd³) (International)

613-7030 BODY AR, EJECTOR, 16.8 m³ (21.9 yd³) (US Only)

613-7029 BODY AR, EJECTOR, 16.8 m³ (21.9 yd³) (International)



LINERS & WEAR PLATES

Liners welded to the inside of the dump body to provide additional protection from loading impact wear.

238-5113 LINERS, BODY, 10mm, DUMP 11.3 m³ (14.8 yd³)

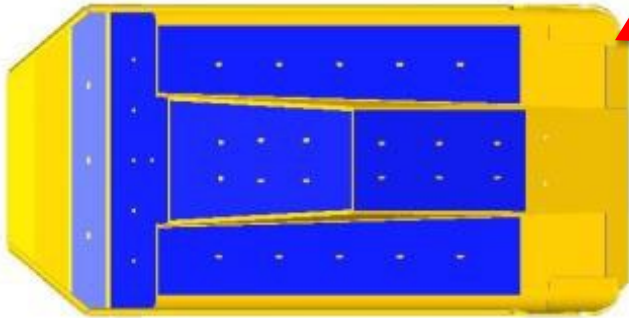
236-5706 LINERS, BODY, 10mm, DUMP 14.4 m³ (18.8 yd³)

225-2688 LINERS, BODY, 10mm, DUMP 17.5 m³ (22.9 yd³)

379-9862 LINERS, BODY, 10mm, DUMP 16.8 m³ (21.9 yd³)



Example layout Impact Liners



Wear Liners standard install



AD30

TAPE

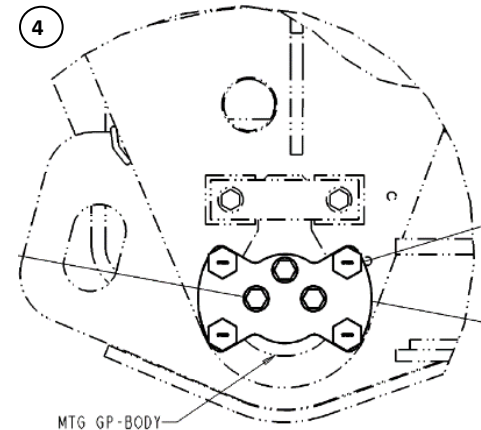
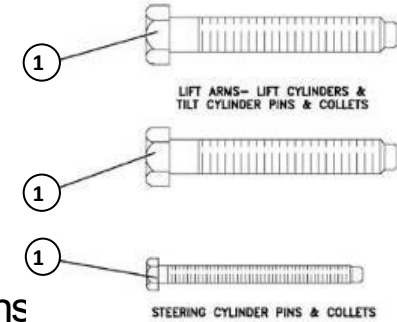
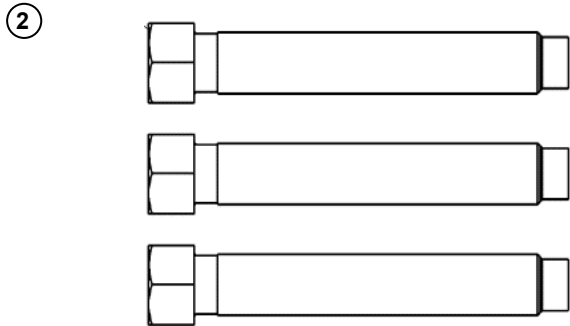
237-0479 TAPE, YELLOW/GREEN REFLECTIVE



TOOLS

- ① **236-8249 BOLTS, COLLET, JACKING**
- ② **275-2660 BOLTS, COLLET, EJECTOR**
- ③ **236-8901 HOIST, CYLINDER SUPPORT X 2**
- ④ **230-6387 TOOL, BODY PIN REMOVER**

Allows for the safe removal and installation of tray pivot pins
 Provides a quick and easy method for loosening and installing body pins.



MINE TRANSFER

421-5850 MINE TRANSFER FRONT FRAME

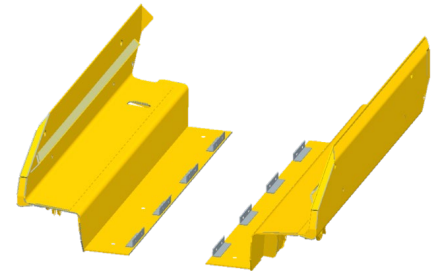
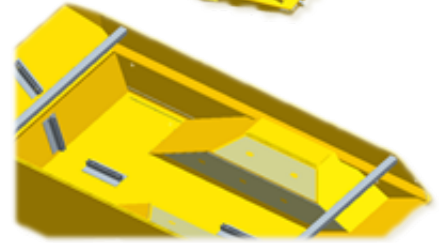
421-5851 MINE TRANSFER DUMP BODY

421-5852 MINE TRANSFER EJECTOR BODY

“Mine Transfer” is to allow for preparation at the factory for the disassembly and re-assembly of machines which are to be transferred underground.

Mine transfer to suit shaft 1829mm (72in) x 1422mm (56in). Machine/Body will be tack welded, will ship complete and will require dis-assembly. Dealers will be required to source own jigs, crossbeams and hardware to re-assemble.

(Contact Account Coordinator for availability.)



AD30

OPERATION AND MAINTENANCE MANUAL

English Operation and Maintenance Manual will be supplied with all units. An additional language may be selected from below if required, depending upon language of destination.

0P-4351 INSTRUCTIONS, SPANISH

0P-4349 INSTRUCTIONS, PORTUGUESE

0P-4348 INSTRUCTIONS, GERMAN

0P-4347 INSTRUCTIONS, RUSSIAN

0P-1811 INSTRUCTIONS, FRENCH

0P-4350 INSTRUCTIONS, SLOVAKIAN

0P-2331 INSTRUCTIONS, INDONESIAN

0P-3382 INSTRUCTIONS, CHINESE



CAT

SLEU1900

August 2014



Operation and
Maintenance
Manual

AD30 Underground Articulated Truck

0XR 1-Up (Machine)



PACKING

- ① 0P-6626 ROLL ON-ROLL OFF, DRIVEABLE
- ② 303-3668 VANDALISM PROTECTION ROLL ON-ROLL OFF
0P-1848 PACK, MISCELLANEOUS BODIES

Machine is self driveable and shipped in a Roll On-Roll off configuration.

Covers provided for self driveable machines protecting vital parts of the machine from the possibility of theft or vandalism during transit.



POWERFUL PERFORMANCE IN A COMPACT PACKAGE.



© 2022 Caterpillar. All Rights Reserved. CAT, CATERPILLAR, LET'S DO THE WORK, their respective logos, "Caterpillar Corporate Yellow", the "Power Edge" and Cat "Modern Hex" trade dress as well as corporate and product identity used herein, are trademarks of Caterpillar and may not be used without permission.