

16 GC

MOTOR GRADER



Operating Weight
Engine Power

31 809 kg / 70,127 lb
210-249 kW / 282-334 hp
Cat® 16 GC meets emission standards equivalent
to U.S. EPA Tier 3/EU Stage IIIA.



Cat® Large Motor Graders are known for enhancing productivity in a variety of applications—from mines and quarries to major construction sites. They play an essential role in haul road construction and maintenance—so trucks can run faster and operate more safely. In addition, good roads save sites money on machine maintenance, fuel and tires.

The Cat 16 GC Motor Grader is a reliable, cost-effective choice for your haul road maintenance and major construction projects. Built on proven components from the Cat 16H and 16, this new machine offers the durability you count on from a Cat Motor Grader — as well as reduced owning and operating costs. The 16 GC is a simple, reliable and effective motor grader that gets the job done with lower up-front and lifetime costs.

The 16 GC helps you achieve the right grade quickly and effectively so you can keep your operation running smoothly and profitably.

THE NEW CAT® 16 GC GRADING THE ROAD AHEAD



ECONOMICAL

- » Low cost of acquisition
- » Built to last
- » The power needed at low fuel consumption

SIMPLE AND EFFECTIVE

- » Limited electronics and sensors for easy maintenance
- » Simple operation using Cat lever control
- » Digital Blade Slope Meter

RELIABLE AND DURABLE

- » Cat C13 engine
- » Precise, consistent blade movement
- » Built with proven components

WORK MORE... FUEL LESS

Reduce fuel consumption with ECO Mode



SCENARIO:

UP TO 5% FUEL SAVINGS COMPARED TO NOT USING ECO MODE



SIMPLE, EFFECTIVE AND POWERFUL

The 16 GC is
designed to do
the job on time,
every time.



Traditional Lever and Steering Wheel Controls

The Cat C13 engine with standard compression brake offers the power you need to get the job done. The 4.9-meter (16-foot) moldboard provides good coverage for efficient grading and is compatible with current GET offerings. Fast, accurate and balanced hydraulic controls allow operators to precisely modulate hydraulic functions and quickly achieve targets for well-maintained roads and reduced rework.



Comfortable and Productive

Boost productivity and comfort with adjustable seat.

Low Cost Per Hour

Keep costs down while saving on fuel with ECO Mode.

Reliable Performance

Finish the job efficiently and on time, thanks to the perfect power weight balance and precise blade movement provided by the C13 engine.

EASY TO OWN. EASY TO MAINTAIN.

You need a machine that can stand up to the conditions of your site. The 16 GC is built to meet that challenge, leveraging the design and components of other Cat machines for quick and easy maintenance.

- + Interchangeable components with the 16H, 16M and 16
- + Commonality of service parts with multiple Cat machines
- + Easy access for service and repair
- + Quick fluid and filter monitoring and replacement
- + Cat Electronic Technician for simplified electronic troubleshooting
- + Remote drains for coolant, engine oil and hydraulic oil, as well as an optional high-speed engine oil drain
- + Adjustable service brakes with wear indication
- + Ground-level jump studs with optional jump start receptacle
- + Optional autoshift
- + Optional ground-level fast fill fuel system
- + Optional autolube system
- + Optional bottom guards that shield transmission and filter
- + Optional steering cylinder guards

The major structures and components are built tough, offering the durability you expect from a Cat machine.

KEEP YOUR OPERATORS INFORMED

The 16 GC features an in-cab display that gives operators quick, easy access to critical machine information.

- + Hydraulic oil and engine coolant temperature
- + Engine speed
- + Articulation angle
- + Fuel level
- + Water-in-fuel indicator
- + Parking brake status
- + Visual alerts for machine faults

The information display communicates key information to operators, displaying current and requested gear, machine speed, service hours and more.





**DIGITAL BLADE SLOPE METER –
OPTIONAL**

The Digital Blade Slope Meter helps operators maintain a consistent surface slope. This system is ideal for operations trying to achieve a benchmark or target number. It allows operators to see the position of the blade for quick, easy and accurate grading.

This meter is an entry-level offering that uses a sensor on the drawbar to display blade slope on the in-cab information display. This feature can also be used to measure existing grades, eliminating the need for personnel on the ground and increasing site safety.



ELECTRONIC THROTTLE CONTROL

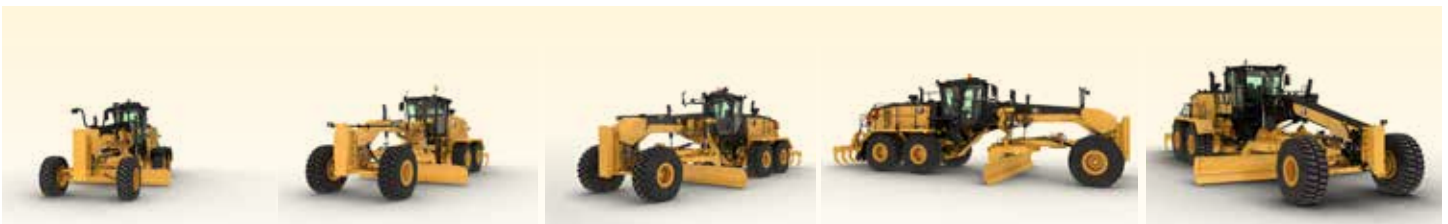
The 16 GC's electronic throttle control system helps improve productivity by matching the machine's horsepower and torque to the demands of the application for increased efficiency and reduced fuel costs.

INCREASED CONNECTIVITY

Cat Product Link Elite™ is a fleet management system that allows you to remotely monitor the performance of equipment. It gathers and displays a wide variety of machine performance and health information from the engine, transmission, and control and guidance systems, including:

- + Event and diagnostic codes
- + Hours
- + Fuel level
- + Idle time
- + Maintenance information

Where available, Cat Product Link Elite allows for remote troubleshooting, remote software flash and remote shutdown.



PRODUCTIVITY & TECHNOLOGY

14

APPLICATION:

Construction, quarries, and small mines

MOLDBOARD SIZE:

4.2 m / 14 ft
4.9 m / 16 ft optional

WEIGHT & POWER:

25 968 kg / 57,250 lb
177-213 kW / 241-289 hp

KEY FEATURES:

- Joystick steering
- Stable blade
- Integrated technology

SIMPLE, RELIABLE, DURABLE

16 GC

APPLICATION:

Construction, quarries, and mines up to 91-tonne / 100-ton trucks

MOLDBOARD SIZE:

4.9 m / 16 ft

WEIGHT & POWER:

31 809 kg / 70,127 lb
210-249 kW / 282-334 hp

KEY FEATURES:

- Lever
- Steering wheel

PRODUCTIVITY & TECHNOLOGY

16

APPLICATION:

Quarries & mines up to 91-tonne / 100-ton trucks

MOLDBOARD SIZE:

4.9 m / 16 ft

WEIGHT & POWER:

32 411 kg / 71,454 lb
216-260 kW / 294-353 hp

KEY FEATURES:

- Joystick steering
- CPM
- Cross Slope
- Integrated technology

PERFORMANCE & TECHNOLOGY

18

APPLICATION:

Mines up to 164-tonne / 181-ton trucks

MOLDBOARD SIZE:

5.5 m / 18 ft

WEIGHT & POWER:

33 713 kg / 74,324 lb
227-266 kW / 309-362 hp

KEY FEATURES:

- Joystick steering
- CPM
- Cross Slope
- Integrated technology

ULTRA CLASS

24

APPLICATION:

Big mines up to 372-tonne / 410-ton trucks

MOLDBOARD SIZE:

7.3 m / 24 ft
8.5 m / 28 ft optional

WEIGHT & POWER:

73 344 kg / 161,695 lb
399-518 kW / 543-704 hp

KEY FEATURES:

- Joystick steering
- Cross Slope
- Integrated technology
- Power/coverage

OPERATE IN COMFORT

The 16 GC's operator environment is built for comfort and safety. The low-profile cab has a number of standard and optional features that help keep people comfortable all shift long, including an adjustable seat, climate controls, sound reduction and more.

- + ROPS certified cab
- + Side mirrors
- + Rear-view mirror
- + Indication display
- + Front wipers / washers
- + Fire extinguisher mounting ready
- + Cup holder
- + 12V power port
- + Cab storage
- + Entertainment radio mounting group (radio mounting enclosure and speakers)
- + Cell phone holder/storage
- + Lev-O-Gauge on front windshield

The Plus Cab includes all features of the standard cab, as well as defroster fans, a sun screen, mounting hardware for a communications radio and a rear wiper/washer.



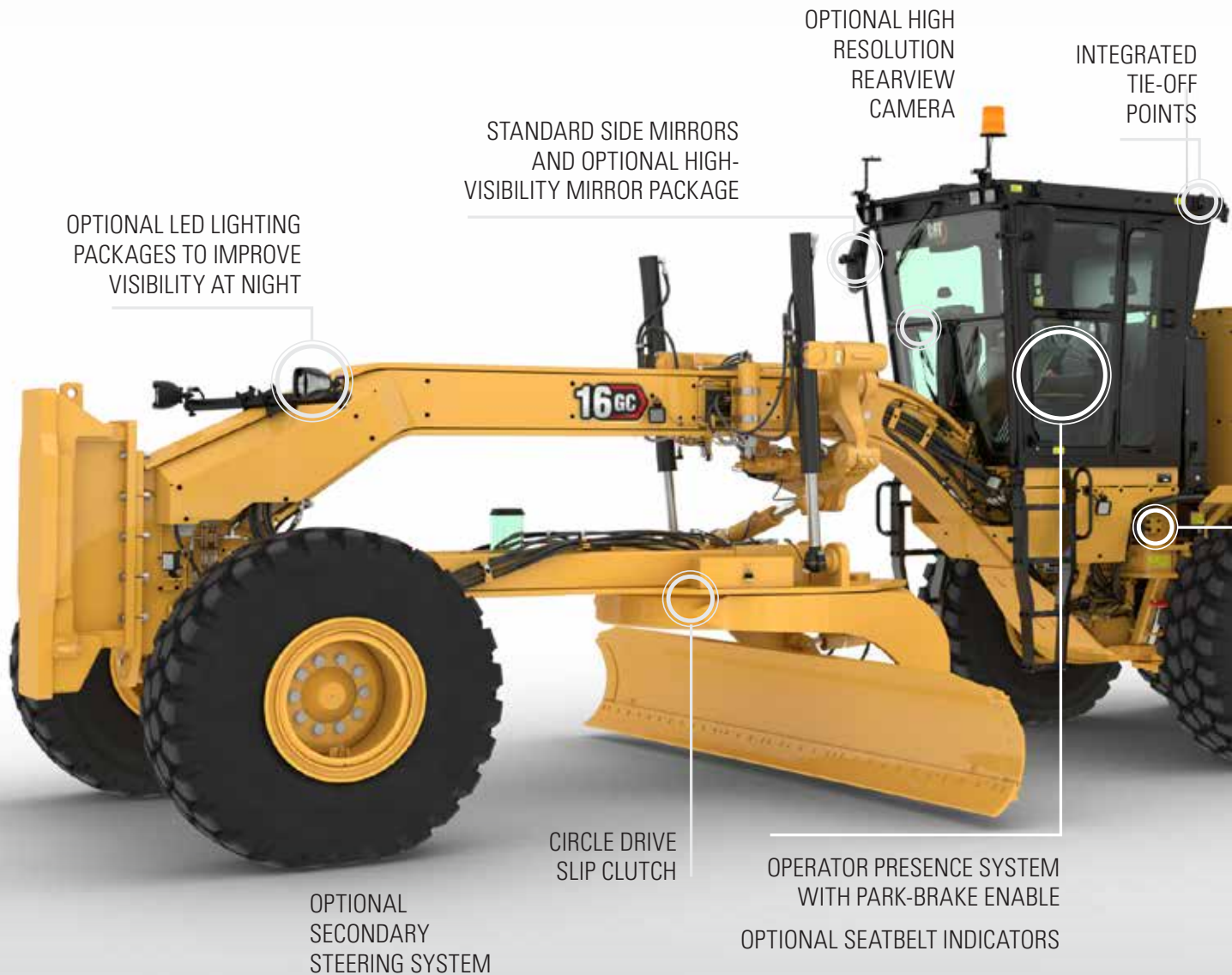
16 GC

MOTOR GRADER



SAFETY-INFUSED

The 16 GC is designed to ensure the safety of everyone working in, on or around the machine.



OPTIONAL LED LIGHTING PACKAGES TO IMPROVE VISIBILITY AT NIGHT

STANDARD SIDE MIRRORS AND OPTIONAL HIGH-VISIBILITY MIRROR PACKAGE

OPTIONAL HIGH RESOLUTION REARVIEW CAMERA

INTEGRATED TIE-OFF POINTS

CIRCLE DRIVE SLIP CLUTCH

OPERATOR PRESENCE SYSTEM WITH PARK-BRAKE ENABLE
OPTIONAL SEATBELT INDICATORS

OPTIONAL SECONDARY STEERING SYSTEM



THE RIGHT TOOLS FOR THE JOB

Cat Motor Graders offer a wide variety of tools, attachments and options to help meet your application-specific needs.

FRONT

- + Push Plate / Counterweight
- + Front Auxiliary Hydraulics



REAR

- + Ripper
- + Retrieval Hitch



To learn more about the retrofits, attachments and blade upgrades available for Cat Motor Graders, visit cat.com/lmg and download the Rig-Out Catalog.



WALKWAYS AND GRAB RAILS

ENGINE SHUTOFF AND ELECTRICAL DISCONNECT SWITCHES

OPTIONAL REAR STEP

OPTIONAL GROUND-LEVEL FUELING (FAST FILL)

MAXIMUM STOPPING POWER AT ALL FOUR REAR WHEELS



WORLD-CLASS DEALER SUPPORT

Like all Cat machines, the 16 GC is backed by the support of the global Cat dealer network. From helping you choose the right machine to knowledgeable ongoing support, Cat dealers provide you with unmatched sales and service.

- + Preventive maintenance programs and guaranteed maintenance contracts
- + Best-in-class parts availability
- + Operator training to help boost your profits
- + Genuine Cat Remanufactured parts



Caterpillar and Cat dealer personnel will partner with you on site to improve the performance not only of your motor graders, but of your entire operation. You'll have access to parts and service, and technicians who are focused on helping you optimize repairs to keep machines in the field rather than the maintenance shop.

And we help with training to ensure your operators have the skills and knowledge they need to work as efficiently and productively as possible. We also work alongside you to ensure you achieve maximum value throughout the life of your equipment. Together with our Cat dealer network, we customize service offerings to provide a maintenance solution that fits your operation—whether you want to perform the majority of service yourself, or you're looking for an onsite partner to manage your maintenance organization. We're also consultants who can help you make smart decisions about buying, operating, maintaining, repairing, rebuilding and replacing equipment.

MORE THAN MACHINES

When you buy Cat equipment, you're getting so much more than the machine. You're also getting the support of a best-in-class dealer network, backed by a range of flexible solutions, technology, tools and more. It's all about support that's built around your success.

- + Customer Value Agreements (CVAs)
- + Cost-saving service and repair options
- + Quality parts and precision components
- + Financing solutions
- + Rental and used equipment



TECHNICAL SPECIFICATIONS

See cat.com for complete specifications.

ENGINE		
Engine Model	Cat C13 U.S. EPA Tier 3 Equivalent / EU stage IIIA Equivalent	
Net Engine Power Range	210–249 kW	282–334 hp
Displacement	12.5 L	763 in ³
Bore	130 mm	5.1 in
Stroke	157 mm	6.2 in
Torque Rise ISO 9249	46%	
Maximum Torque ISO 9249	1738 N-m	1282 lb-ft
Number of cylinders	6	
Derating Altitude	3954 m	12,972 ft
Standard Capability	50° C	122° F
<ul style="list-style-type: none"> • Net power is tested per ISO 9249, S50AE J1349, and EEC 80/1269 Standards in effect at the time of manufacture. • Net power advertised is the power available at rated speed of 2,000 rpm, measured at the flywheel when engine is equipped with fan, air cleaner, muffler and alternator. • Power as declared per ISO 14396 		

DIMENSIONS		
Length of Machine*	11781 mm	463.8 in
Height (Top of cab)	3539 mm	139.3 in
Width	3319 mm	130.7 in
*Typically equipped with push block and ripper.		

WEIGHTS		
Operating Weight	31 809 kg	70,127 lb
• Typically equipped machine weight is calculated with full fluids, 16' blade, push plate, ripper, bottom guard, and operator.		

SERVICE REFILL CAPACITIES		
Fuel Tank	432 L	114 gal
Circle Drive	10 L	2.6 gal
Engine Crankcase	36 L	9.5 gal
Cooling System	69 L	18.2 gal
Hydraulic System	56 L	14.8 gal
Transmission/Differential	117 L	30.9 gal
Tandem Housing (each)	125 L	33 gal
Front Spindle Housing (each)	0.9 L	0.24 gal

MOLDBOARD		
Blade Width	4.9 m	16 ft
Blade Height	787 mm	31 in
Arc Radius	413 mm	16.3 in
Throat Clearance	126 mm	5 in
End Bit Width	152 mm	6 in
Cutting Edge Width	203 mm	8 in

BLADE RANGE		
Circle Center Shift		
Right	560 mm	22 in
Left	690 mm	27.2 in
Moldboard Side Shift		
Right	790 mm	31.1 in
Left	740 mm	29.1 in
Blade Tip Range		
Forward		40°
Backward		5°
Maximum Lift Above Ground	400 mm	15.7 in
Maximum Depth of Cut	470 mm	18.5 in

STANDARD & OPTIONAL EQUIPMENT

Standard and optional equipment may vary. Consult your Cat dealer for details.

CAB	STANDARD	OPTIONAL
Mechanical Suspension Seat	•	
Air Suspension Seat		•
Steering Wheel/Lever Controls	•	
ROPS/FOPS	•	
Heating/Cooling Cab System	•	
Low Profile Cab	•	
Fire Extinguisher Mounting Ready	•	
Information Display Screen	•	
Halogen Lighting		•
LED Lighting		•
Entertainment Radio Ready	•	
Bluetooth Radio		•
12V Power Ports	•	
Cell Phone Holder	•	
Rear Window Screen		•
Front Wipers	•	
Rear Wiper		•
Digital Blade Slope Meter		•
Transmission Guards		•
Steering Cylinder Guards		•
Product Link™ Elite	•	
ENGINE	STANDARD	OPTIONAL
Cat C13	•	
ECO Mode	•	
On-Demand Fan	•	
Compression Brake	•	
DRAWBAR CIRCLE MOLDBOARD	STANDARD	OPTIONAL
4.9m (16 ft) Moldboard	•	
Circle Drive Slip Clutch	•	

SAFETY	STANDARD	OPTIONAL
Parking Brake	•	
Signaling/Warning Horn	•	
Rearview Mirror	•	
Rearview Camera		•
Hydraulic Brakes	•	
Secondary Steering System		•
Side-view Mirrors	•	
Walkways and Grab Rails	•	
High Visibility Mirror Package		•
Rear Tandem Access Enhancement		•
Warning Beacon		•
Seat Belt Indication (Internal and External)		•
Turn Signals and High / Low Beam Headlights		•
VERSATILITY	STANDARD	OPTIONAL
Push block		•
Ripper		•
Retrieval hitch		•

For more complete information on Cat products, dealer services and industry solutions, visit us at www.cat.com

©2022 Caterpillar. All Rights Reserved.

Materials and specifications are subject to change without notice. Featured machines in photos may include additional equipment. See your Cat dealer for available options.

ProductLink and VisionLink are trademarks of Caterpillar Inc., registered in the United States and in other countries.

© 2022 Caterpillar. All Rights Reserved. CAT, CATERPILLAR, LET'S DO THE WORK, their respective logos, "Caterpillar Corporate Yellow", the "Power Edge" and Cat "Modern Hex" trade dress as well as corporate and product identity used herein, are trademarks of Caterpillar and may not be used without permission.

AEHQ8431

Build Number: 01A

Regions: Afr-ME, Asia, Eurasia, Indo

