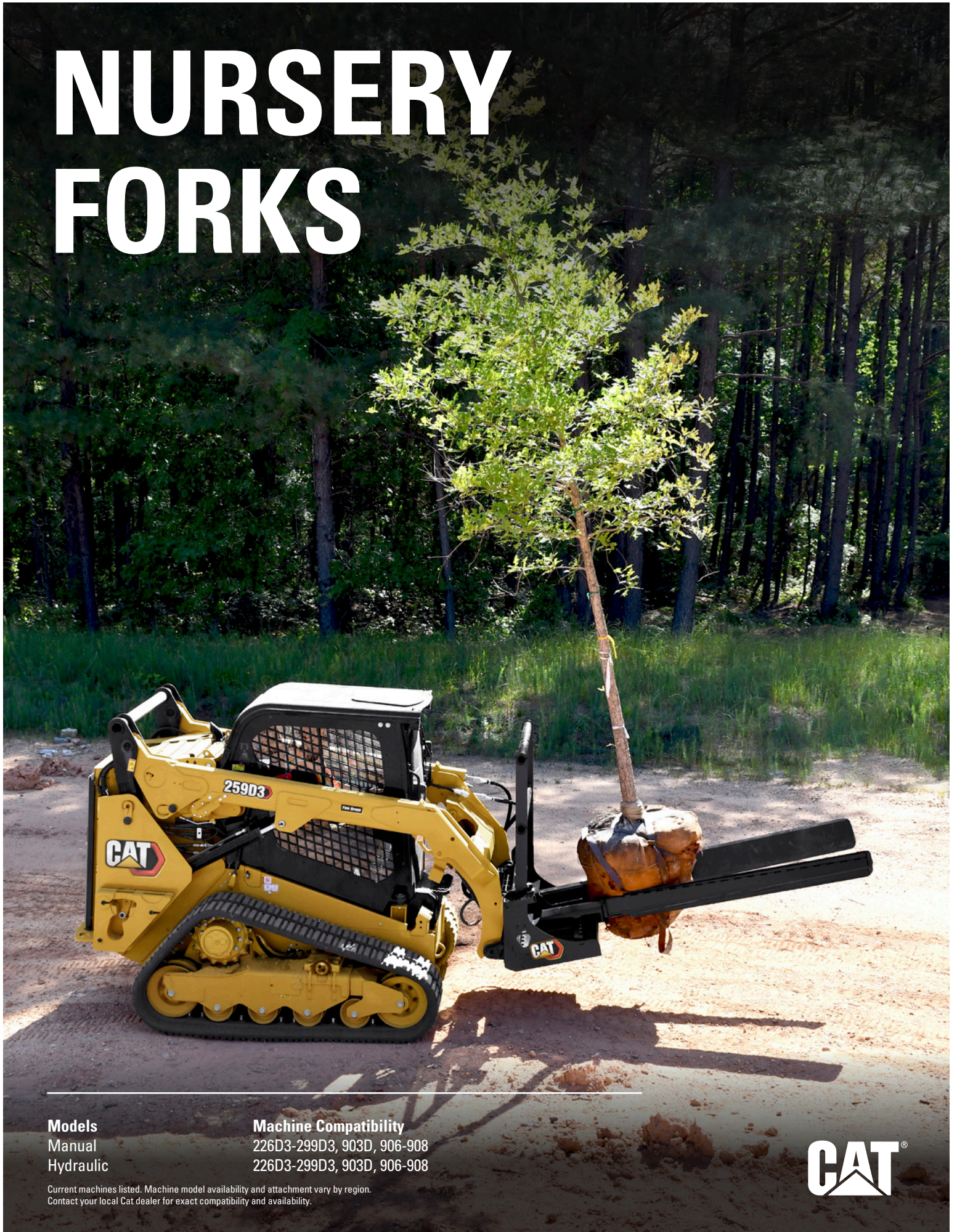


# NURSERY FORKS



**Models**  
Manual  
Hydraulic

**Machine Compatibility**  
226D3-299D3, 903D, 906-908  
226D3-299D3, 903D, 906-908

Current machines listed. Machine model availability and attachment vary by region.  
Contact your local Cat dealer for exact compatibility and availability.



Cat® nursery forks are ideal for handling ball and burlap trees and large potted plants at nursery sites and in landscaping applications. The pivoting fork design allows the left fork to swing open and fit around multiple root balls on both the manual and hydraulic fork. The right fork width can be adjusted manually (manual version) or hydraulically (hydraulic version).

## FEATURES



**Side Shifting Right Tine** allows for greater control and maximizes proper fit when handling different size root balls. This tine is manually moved on the manual version and hydraulically operated on the hydraulic version.



**Pivoting Left Tine** allows maximum opening to grasp large root balls.



**Diamond Tread Plate** provides a secure grip on the load for maximum load retention. 25 degree angle on tine matches angle of most standard root balls to help reduce damage.



**Deeply Serrated Step** provides secure footing for operators entering and exiting machines.



**Integrated Grab Handle** allows a secure contact point upon entry exit of the machine for the operator.

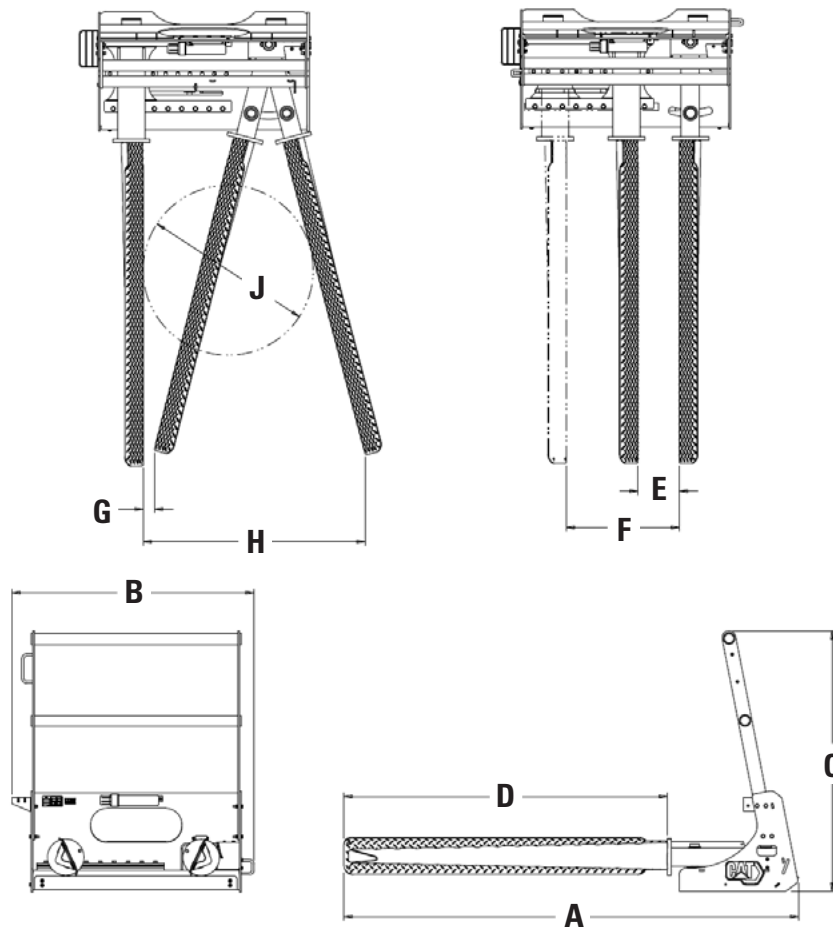


**Operation and Maintenance Manual** is tool mounted and sealed from the elements. Holder includes all the operation manuals and maintenance guides required for proper operation of the work tool.



# NURSERY FORKS

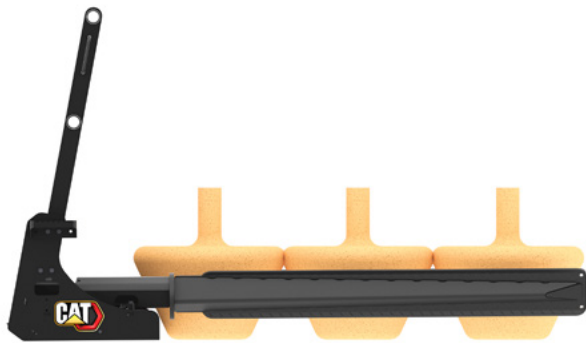
## SPECIFICATIONS



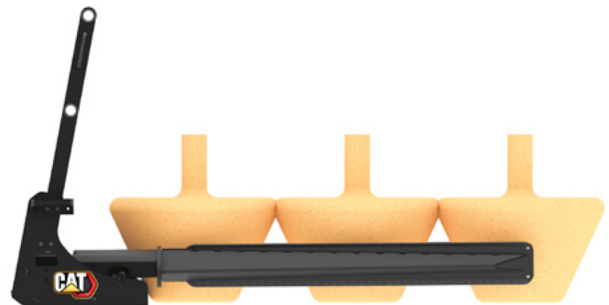
Model	Manual	Hydraulic
A Overall Length – mm (in)	2491 (98.1)	2491 (98.1)
B Overall Width – mm (in)	1327 (52.2)	1327 (52.2)
C Overall Height – mm (in)	1427 (56.2)	1427 (56.2)
D Usable Tine Length – mm (in)	1788 (70.4)	1788 (70.4)
E Parallel Tine Opening Minimum – mm (in)	225 (8.9)	225 (8.9)
F Parallel Tine Opening Maximum – mm (in)	617 (24.3)	617 (24.3)
G Angled Tine Opening Minimum at Tip – mm (in)	48.1 (1.9)	48.1 (1.9)
H Angled Tine Opening Maximum at Tip – mm (in)	1196 (47)	1196 (47)
J Maximum Root Ball Diameter – mm (in)	1372 (54)	1372 (54)
Length Between Adjustments – mm (in)	79 (3.1)	Variable
Number of Adjustments	6	Variable
Total Tine Movement – mm (in)	393 (15.5)	393 (15.5)
Weight – kg (lb)	342 (754)	362 (798)
Optimal Hydraulic Flow – lpm (gpm)	49-87 (13-23)	49-87 (13-23)
Optimal Hydraulic Pressure – bar (psi)	170-241 (2500-3500)	170-241 (2500-3500)
Maximum Load Lifting Capacity – kg (lb)	1361 (3000)	1361 (3000)
Interface Type	Skid Steer Coupler	Skid Steer Coupler
Required Hydraulics	Standard Flow	Standard Flow, 14 Pin Electrical*

\*Or an 8-to-14 pin conversion harness for use with compact wheel loaders.

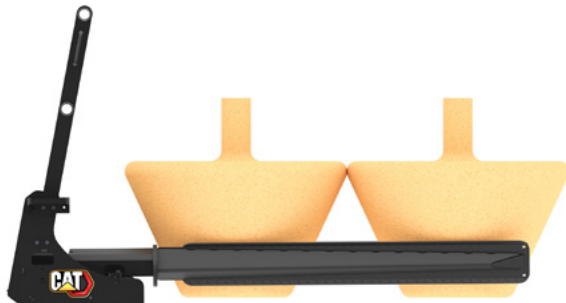
# NURSERY FORKS



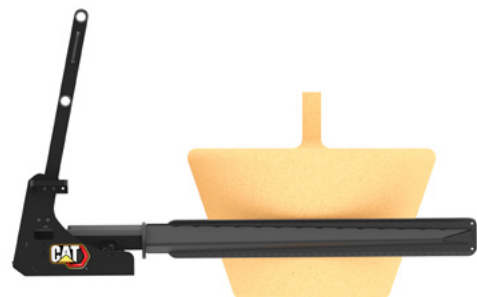
28 inch – 3 Root Balls Position



34 inch – 3 Root Balls Position



44 inch – 2 Root Balls Position



54 inch – 1 Root Ball Position



Standard 2 year warranty gives you peace of mind when purchasing a quality Cat work tool attachment.

For more complete information on Cat products, dealer services and industry solutions, visit us on the web at [www.cat.com](http://www.cat.com)

AEHQ8419 (10-2022)  
(Global)

© 2022 Caterpillar. All Rights Reserved.

Materials and specifications are subject to change without notice. Featured machines in photos may include additional equipment. See your Cat dealer for available options.

CAT, CATERPILLAR, LET'S DO THE WORK, their respective logos, "Caterpillar Corporate Yellow," the "Power Edge" and Cat "Modern Hex" trade dress as well as corporate and product identity used herein, are trademarks of Caterpillar and may not be used without permission.

[www.cat.com](http://www.cat.com) [www.caterpillar.com](http://www.caterpillar.com)

