

## CAT® EXCAVATORS LINKAGE PIN KITS

Conveniently repair your excavator's linkage pin and bearing system with a single part number. Because Cat® Linkage Pin Kits include everything you need - pin, sleeve bearings, seals, and hardware – you can be confident you have the right repair parts on-hand.



Locate the pin joint in the image below. Match the corresponding letter to the table to find the correct kit part number.



### EACH KIT INCLUDES:



**LINKAGE  
PIN**



**SLEEVE  
BEARINGS**



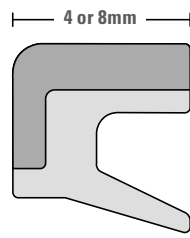
**SEALS**



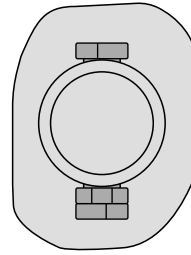
**HARDWARE**

# GET WHAT YOU NEED AND GET BACK TO WORK

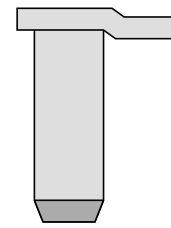
Save time and get the right kit for your excavator by using our interactive shopping chart below. Just cross-reference your model and pin joint, then click the kit part number to purchase.



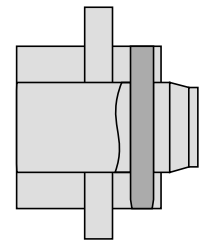
LIP SEAL



CROSS-BOLT



BOLTED FLAG



DOWEL + RING

## HYDRAULIC EXCAVATOR MACHINE MODELS

PIN JOINT	KIT PART NUMBER	PIN NUMBER	LIP SEAL WIDTH	RETENTION TYPE	310-314	319-323	324-335	336-340	345-352	
A	<a href="#">622-1367</a>	71-6843	4 mm	Cross-Bolt	Reach	–	Long Reach	–	–	
	<a href="#">623-2071</a>	086-0523	8 mm	Cross-Bolt	Reach	–	Long Reach	–	–	
B	<a href="#">623-9290</a>	086-0523	8 mm	Dowel + Ring	Reach	–	Long Reach	–	–	
	<a href="#">623-9297</a>	086-0523	4 mm	Dowel + Ring	Reach	–	Long Reach	–	–	
	<a href="#">623-9298</a>	087-5805	8 mm	Cross-Bolt	–	Reach	–	Long Reach	–	
	<a href="#">623-9299</a>	087-5805	8 mm	Dowel + Ring	–	Reach	–	Long Reach	–	
	<a href="#">623-9300</a>	087-5805	4 mm	Dowel + Ring	–	Reach	–	Long Reach	–	
	<a href="#">622-1361</a>	251-2552	8 mm	Bolted Flag	–	–	Mass	Reach	–	
	<a href="#">622-1360</a>	234-3931	8 mm	Bolted Flag	–	–	Reach	–	–	
	<a href="#">623-9307</a>	235-7636	8 mm	Bolted Flag	–	–	–	Mass	Reach	
	C	<a href="#">622-1362</a>	086-0523	8 mm	Cross-Bolt	Reach	–	Long Reach	–	–
		<a href="#">623-2066</a>	086-0523	8 mm	Dowel + Ring	Reach	–	Long Reach	–	–
<a href="#">623-2067</a>		086-0523	4 mm	Cross-Bolt	Reach	–	Long Reach	–	–	
<a href="#">623-9306</a>		087-5805	8 mm	Cross-Bolt	–	Reach	–	Long Reach	–	
<a href="#">623-9305</a>		087-5805	8 mm	Dowel + Ring	–	Reach	–	Long Reach	–	
<a href="#">623-9302</a>		087-5805	4 mm	Dowel + Ring	–	Reach	–	Long Reach	–	
<a href="#">622-1360</a>		234-3931	8 mm	Bolted Flag	–	–	Reach	–	–	
<a href="#">622-1366</a>		251-2558	8 mm	Bolted Flag	–	–	Mass	Reach	–	
<a href="#">623-2068</a>		235-7642	8 mm	Bolted Flag	–	–	–	Mass	Reach	
D	<a href="#">622-1365</a>	251-2557	8 mm	Cross-Bolt	–	–	Mass	Reach	–	



PEDJ1265

© 2023 Caterpillar. All Rights Reserved. CAT, CATERPILLAR, LET'S DO THE WORK, their respective logos, "Caterpillar Corporate Yellow", the "Power Edge" and Cat "Modern Hex" trade dress as well as corporate and product identity used herein, are trademarks of Caterpillar and may not be used without permission.