

CAT® INSPECT RELEASE NOTES

Aug 30, 2022

Cat Inspect

Cat Inspect is an easy-to-use application that allows users to download and complete Caterpillar and user-defined inspections with the option to include additional information like images, videos, comments, and ratings. Completed inspection details are easily retrieved from the streamlined web portal for follow up and opportunity management.

SUMMARY

What's included in this update?

Cat Inspect Mobile (Target Release Date: September 6, 2022)

1. SOS sample submission updated to account for unregistered Serial Numbers and invalid Sample numbers
2. SOS user experience updated when displaying Fluid Brand, Type, and Weight
3. TAR files can be viewed/saved from the mobile app
4. Delete Account added to settings page

Cat Inspect Web (August 30, 2022)

1. Download Data reports now show local date format
2. TAR files now supported as inspection file attachments
3. 'Users' menu now displays Last Activity for each user

ANNOUNCEMENT

Newly added Caterpillar Corporate Component D&A inspection templates for Drivetrain major components for select Product Families. Click link below and see "ADDITIONAL FEATURES & ENHANCEMENT" section on pg 3.

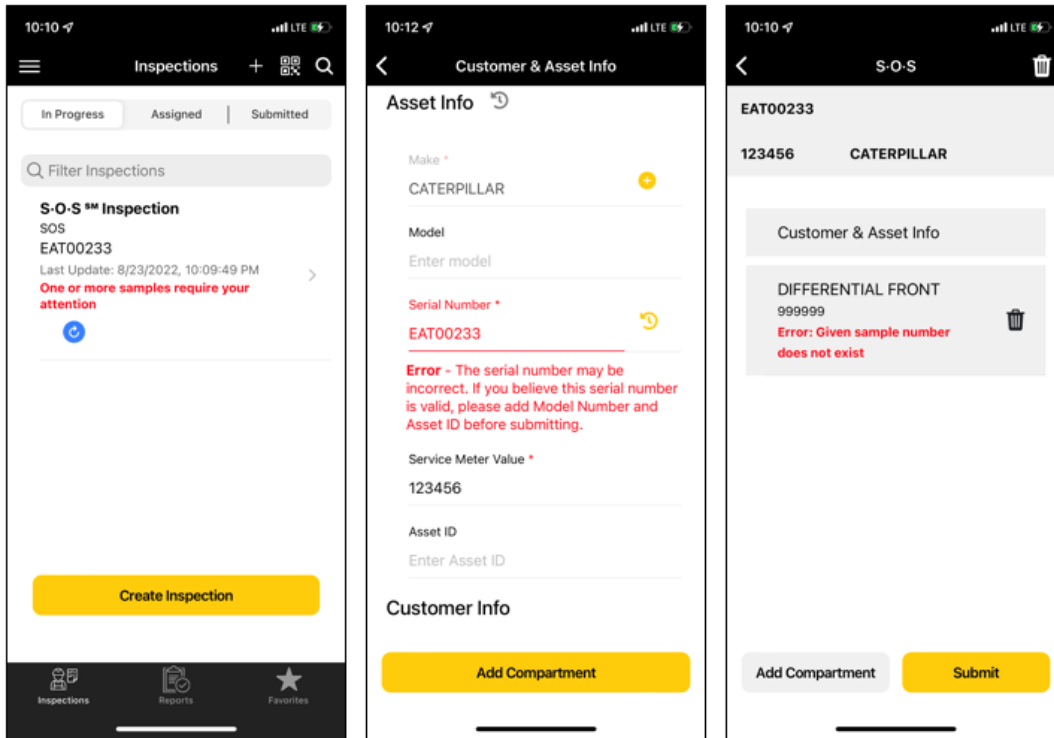
<https://catdealer.com/en/services-support/maintenance/cat-inspect/gse-cat-inspect-forms.html>

NEW FEATURES & ENHANCEMENTS

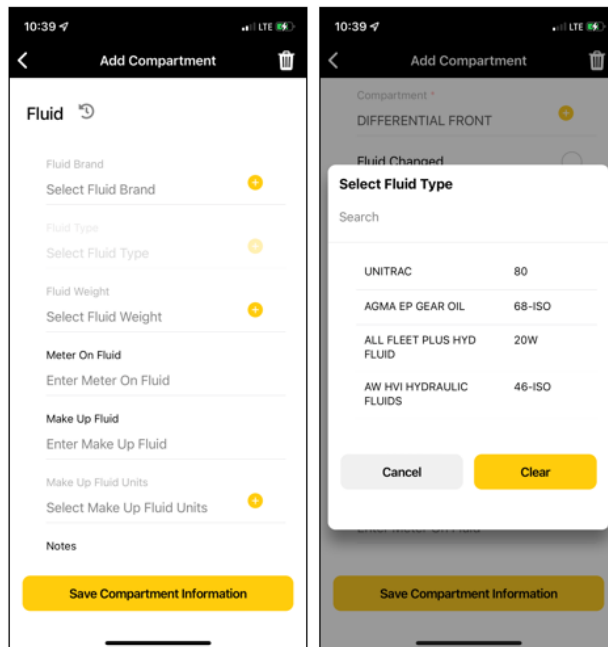
Cat Inspect Mobile (Target Release Date: September 6, 2022)

1. **SOS sample submission workflow updated to account for unregistered Serial Numbers and invalid Sample Numbers.**

Sample Number and Serial number validations have been added to the SOS sample submission workflow to help reduce sample submission errors. If a Serial Number is not registered to the selected dealer, the user will receive an error message prompting them to verify the serial number is correct and to add Model Number and Asset ID before submitting. This will allow the sample to be submitted and the Serial Number can be registered by an SOS Administrator. Error messaging has also been added when the given sample number does not exist. When this occurs the user will be prompted to contact their Dealer Administrator who will need to contact SOS support to resolve the issue.



2. Updated SOS user experience updated to match SOS web when displaying Fluid Brand, Type, and Weight.

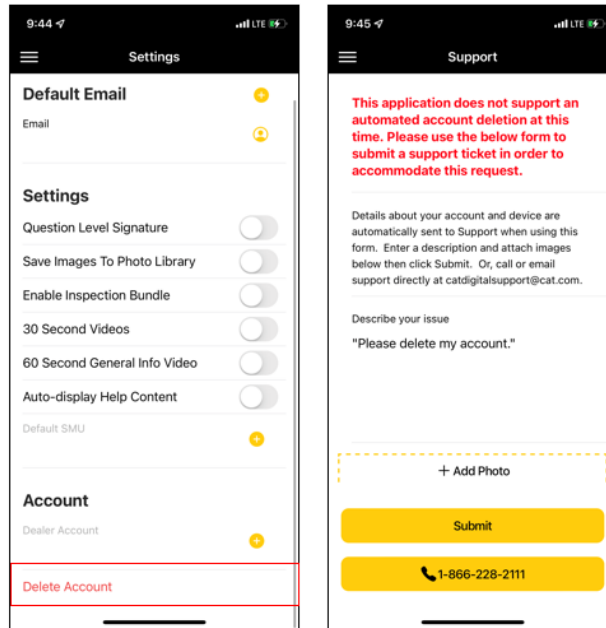


3. Users can now view or save attached TAR files from the mobile app.

Cat Inspect web now supports TAR files as inspection attachments which can also be viewed or saved (to local device) from the mobile app.

4. Delete account option added to settings page.

If a user needs to delete their account, they can submit a request to Cat Digital Support by accessing the 'Delete Account' option under the settings page on the main menu.



NEW FEATURES & ENHANCEMENTS

Cat Inspect Web (August 30, 2022)

1. Data download reports now show local date format

When reports are generated from the Download Data menu, the output dates are displayed in the local date format with the format displayed in the column header.

2. TAR files now supported as inspection file attachments

Files with the following extensions: (.tar.gz, .gz, or .tgz) can now be added from Cat Inspect web to in-progress or completed inspections under the General Info & Comment section 'Add Supporting Files'. The Tar file size is limited to 6MB. As a reminder, you can add up to 5 supporting documents to each inspection and Cat Inspect currently supports these extensions: '.xls', '.xlsx', '.csv', '.pdf', '.txt', '.xml', '.json', '.tar', '.gz', '.tqz'

3. 'Users' menu now displays Last Activity for each user

Organizational and System Administrators can now see the "Last Activity" date/time for each user within their organization. This provides a quick and easy way to view and assess user activity.

| CAT INSPECT | | Users | | | | | | Dealer: TD99 | |
|-------------|---------------|--------------|--------|----------|---------|-------|--------------|----------------------|--------|
| Name | Account Type | CatRecID | Status | Archived | CWS ID | Email | Organization | Last Activity | Action |
| John Schalk | Administrator | PPI-1076EB66 | Active | No | TD99JWS | | TD99 | 08/22/2022, 05:29 AM | |

FIXES

1. **Web: Fixed** an issue with draft forms not being saved when a form is cloned or edited
2. **Web: Fixed** an issue causing delays when adding comments to images on the website
3. **Web: Fixed** an issue causing delays when downloading inspection data by Form Name
4. **Web: Other** minor bug fixes and enhancements
5. **Mobile: Fixed** an issue on Android devices where build number and release notes were not being displayed under main menu
6. **Mobile: Fixed** an issue causing low quality images when using gallery
7. **Mobile: Other** minor bug fixes and enhancements

COMING SOON

Here is a preview of some new features to expect in our upcoming release schedule:

- A new Cat Inspect API (Application Program Interface) will be made available on the Digital Marketplace
- Form authors can add custom header fields to an inspection form
- Organizational managed questions responses (options sets).

ADDITIONAL FEATURES & ENHANCEMENTS

New Corporate Component D&A type templates for Drivetrain major components on select Product Families.


1. Earlier this year, several new corporate Component D&A type templates went live on select products to help increase level of awareness of parts not achieving expected lives or reuse frequency within Drivetrain major components. These templates are intended for use in major failures / repairs (like those requiring component removal from chassis) or during major component rebuild / overhauls. These templates are also designed to be condition reports (red/yellow/green) for key areas within the Drivetrain (gears, bearings, clutches, housings, etc.) with an average of 25 questions / template. This lean question list coupled with CAT Inspect Mobile provides a quick method to document critical component health detail.

The CAT Inspect Product Families include: ARTICULATED DUMP TRUCK, MOTOR GRADER, OFF-HIGHWAY TRUCK (covers 770 – 798), TRACK-TYPE TRACTOR (covers D6 – D11, Pipelayers and Track-Type Loaders), WHEEL-TYPE LOADER (covers Small / Medium / Large Wheel Loaders, Landfill Compactors, Wheeled Dozers, Underground Trucks and Underground Loaders). Note each question is hard coded to a specific Drivetrain SMCS Component Code to further link the Inspect results with the Drivetrain sub-system.

Form List:

| <u>CAT Inspect Product Family</u> | <u>CAT Inspect Form Id</u> | <u>CAT Inspect Form Name</u> |
|-----------------------------------|----------------------------|---|
| ARTICULATED DUMP TRUCK | 219889 | Axle Disassembly & Inspection - AT |
| | 219970 | Transmission & Tor Conv Disassembly & Inspection - AT |
| | 220067 | Output Transfer Gear Group Disassembly & Inspection - AT |
| MOTOR GRADER | 219975 | Transmission Disassembly & Inspection - MG |
| | 220070 | Front Axle Disassembly & Inspection - MG |
| | 219976 | Rear Axle Disassembly & Inspection - MG |
| | 219893 | Tandem & Brakes Disassembly & Inspection - MG |
| OFF-HIGHWAY TRUCK | 220068 | Rear Axle Disassembly & Inspection - OHT |
| | 219890 | Transmission & Tor Conv Disassembly & Inspection - OHT |
| | 220069 | Front Wheel Group Disassembly & Inspection - OHT |
| TRACK-TYPE TRACTOR | 219973 | Transmission & Tor Conv Disassembly & Inspection - TTT/PL |
| | 219891 | Differential Steer Disassembly & Inspection - TTT/PL |
| | 219892 | Steering Clutch & Brake Disassembly & Inspection - TTT/PL |
| | 219974 | Final Drive Disassembly & Inspection - TTT/PL/TTL |
| WHEEL-TYPE LOADER | 219971 | Axle Disassembly & Inspection - WL/CMP/HRV |
| | 219972 | Transmission & Tor Conv Disassembly & Inspection - WL/CMP/HRV |

Example Form Structure:

 **Transmission & Tor Conv Disassembly & Inspection - TTT/PL**

Overall Condition (8) ▼

Transmission & Tor Conv Oil System (6) ▼

Transmission Powershift (13) ▼

Torque Converter (9) ▼

Pump Drive (5) ▼

Electronics (3) ▼

Torsional Coupler (1) ▼

Transfer Gears (4) ▼

Close

Example of question list for a sub-system:

Transmission & Tor Conv Disassembly & Inspection - TTT/PL

Pump Drive (5)

- 1. Check condition of bearings.**
Option Set: **Damage** **Wear** **Other** **No Issues**
Component Code : 3108 PUMP DRIVE
- 2. Check condition of bolted joints.**
Option Set: **Tight** **Loose** **Missing**
Component Code : 3108 PUMP DRIVE
- 3. Check condition of shafts & retention rings.**
Option Set: **Damage** **Wear** **Other** **No Issues**
Component Code : 3108 PUMP DRIVE
- 4. Check condition of seals (Lip Seal/Yoke, O-Rings).**
Option Set: **Damage** **Wear** **Other** **No Issues**
Component Code : 3108 PUMP DRIVE
- 5. Check condition of gears.**
Option Set: **Re-use** **Repair** **Replace** **N/A**
Component Code : 3108 PUMP DRIVE