



# 340

## Hydraulic Excavator

# Technical Specifications

Configurations and features may vary by region. Please consult your Cat® dealer for availability in your area.

## Table of Contents

<b>Specifications</b> .....	<b>2</b>
Engine .....	2
Swing Mechanism .....	2
Weights .....	2
Track .....	2
Drive .....	2
Hydraulic System .....	2
Service Refill Capacities .....	3
Standards .....	3
Sound Performance .....	3
Air Conditioning System .....	3
Operating Weights and Ground Pressures .....	4
Major Component Weights .....	5
Dimensions .....	6
Working Ranges and Forces .....	8
HD Reach Boom Lift Capacities:	
R3.9DB(HD) Stick .....	9
R3.2DB(HD) Stick .....	12
R2.8DB(HD) Stick .....	13
Mass Boom Lift Capacities:	
M2.55TB Stick .....	15
Bucket Specifications and Compatibility:	
Africa, Middle East and Eurasia .....	17
Indonesia .....	20
Attachments Offering Guide:	
Africa, Middle East .....	22
Eurasia .....	28
Indonesia .....	34
<b>Standard and Optional Equipment</b> .....	<b>35</b>
<b>Dealer Installed Kits and Attachments</b> .....	<b>37</b>
<b>Cab Options</b> .....	<b>38</b>
<b>340 Environmental Declaration</b> .....	<b>39</b>

# 340 Hydraulic Excavator Specifications

## Engine

Engine Model	Cat® C9.3B	
Net Power		
ISO 9249	258.3 kW	346 hp
ISO 9249 (DIN)	351 hp (metric)	
Engine Power		
ISO 14396	259.0 kW	347 hp
ISO 14396 (DIN)	352 hp (metric)	
Bore	115 mm	5 in
Stroke	149 mm	6 in
Displacement	9.3 L	568 in <sup>3</sup>

- Meets U.S. EPA Tier 3, EU Stage IIIA equivalent, and China Nonroad Stage III emission standards.
- Recommended for use up to 4500 m (14,760 ft) altitude with engine power derate above 3000 m (9,840 ft).
- Advertised power is tested per the specified standard in effect at the time of manufacture.
- Net power is the power available at the flywheel when the engine is equipped with fan, air intake system, exhaust system, and alternator with engine speed at 1,900.
- Cat engines are compatible with diesel fuel blended with the following lower-carbon intensity fuels\*\* up to:
  - ✓ 100% biodiesel FAME (fatty acid methyl ester)\*
  - ✓ 100% renewable diesel, HVO (hydrogenated vegetable oil) and GTL (gas-to-liquid) fuels

Refer to guidelines for successful application. Please consult your Cat dealer or “Caterpillar Machine Fluids Recommendations” (SEBU6250) for details.

\*B30, where mandated, can be used. For use of blends higher than 20% biodiesel, consult your Cat dealer.

\*\*Tailpipe greenhouse gas emissions from lower-carbon intensity fuels are essentially the same as traditional fuels.

## Swing Mechanism

Swing Speed	8.84 rpm	
Maximum Swing Torque	143 kN·m	105,214 lbf·ft

## Weights

Operating Weight	36 800 kg	81,200 lb
• Long Wide Undercarriage, HD Reach Boom, HD R3.2DB (10'6") Stick, GD 2.5 m <sup>3</sup> (3.27 yd <sup>3</sup> ) Bucket, 600 mm (24") Triple Grouser Shoes, 7.56 mt (16,700 lb) Counterweight.		
Operating Weight	38 300 kg	84,500 lb
• Long Wide Undercarriage, Mass Boom, M2.55TB (8'4") Stick, SDV 2.78 m <sup>3</sup> (3.64 yd <sup>3</sup> ) Bucket, 600 mm (24") Triple Grouser Shoes, 7.56 mt (16,700 lb) Counterweight.		

## Track

Optional Track Shoes Width	600 mm	24 in
Optional Track Shoes Width	700 mm	28 in
Optional Track Shoes Width	800 mm	31 in
Number of Shoes (each side)	49	
Number of Track Rollers (each side)	8	
Number of Carrier Rollers (each side)	2	

## Drive

Maximum Gradeability	35°/70%	
Maximum Travel Speed	4.7 km/h	2.9 mph
Maximum Drawbar Pull	301.5 kN	67,780 lbf

## Hydraulic System

Main System – Maximum Flow – Implement	560 L/min (280 × 2 pumps)	148 gal/min (74 × 2 pumps)
Maximum Pressure – Equipment – Implement	35 000 kPa	5,076 psi
Maximum Pressure – Equipment – Lift Mode	38 000 kPa	5,511 psi
Maximum Pressure – Travel	35 000 kPa	5,076 psi
Maximum Pressure – Swing	29 400 kPa	4,264 psi
Boom Cylinder – Bore	150 mm	6 in
Boom Cylinder – Stroke	1440 mm	57 in
Stick Cylinder – Bore	170 mm	7 in
Stick Cylinder – Stroke	1738 mm	68 in
DB Bucket Cylinder – Bore	150 mm	6 in
DB Bucket Cylinder – Stroke	1151 mm	45 in
TB Bucket Cylinder – Bore	160 mm	6 in
TB Bucket Cylinder – Stroke	1356 mm	53 in

# 340 Hydraulic Excavator Specifications

## Service Refill Capacities

Fuel Tank Capacity	600 L	158.5 gal
Cooling System	40 L	10.5 gal
Engine Oil (with filter)	32 L	8.5 gal
Swing Drive	18 L	4.8 gal
Final Drive (each)	8 L	2.1 gal
Hydraulic System (including tank)	373 L	98.5 gal
Hydraulic Tank (including suction pipe)	161 L	42.5 gal

## Standards

Brakes	ISO 10265:2008
Cab/Operator Protective Guards (OPG) (optional)	ISO 10262:1998 Level II
Cab/Rollover Protective Structure (ROPS)	ISO 12117-2:2008

## Sound Performance

ISO 6395:2008 (external)	106 dB(A)
ISO 6396:2008 (inside cab)	73 dB(A)

- When properly installed and maintained, the cab offered by Caterpillar, when tested with doors and windows closed according to ANSI/SAE J1166 OCT98, meets OSHA and MSHA requirements for operator sound exposure limits in effect at time of manufacture.
- Hearing protection may be needed when operating with an open operator station and cab (when not properly maintained or doors/windows open) for extended periods or in a noisy environment.

## Air Conditioning System

The air conditioning system on this machine contains the fluorinated greenhouse gas refrigerant R134a (Global Warming Potential = 1430). The system contains 1.00 kg of refrigerant which has a CO<sub>2</sub> equivalent of 1.430 metric tonnes.

# 340 Hydraulic Excavator Specifications

## Operating Weights and Ground Pressures

Base Machine Configurations	600 mm (24") Triple Grouser Shoes		600 mm (24") Double Grouser Shoes		600 mm (24") Triple Grouser HD Shoes	
	Weight	Ground Pressure	Weight	Ground Pressure	Weight	Ground Pressure
	kg (lb)	kPa (psi)	kg (lb)	kPa (psi)	kg (lb)	kPa (psi)
<b>Base Frame with HD Track Rollers and Carrier Rollers for Long Wide Undercarriage</b>						
<b>7.56 mt (16,700 lb) Counterweight + Long Wide Undercarriage Base Machine + HD Reach Boom</b>						
HD R3.9 m (12'10") DB Stick, 2.5 m <sup>3</sup> (3.27 yd <sup>3</sup> ) GD Bucket	37 000 (81,500)	68.9 (10.0)	37 700 (83,200)	70.3 (10.2)	37 600 (83,000)	70.1 (10.2)
HD R3.2 m (10'6") DB Stick, 2.5 m <sup>3</sup> (3.27 yd <sup>3</sup> ) GD Bucket	36 800 (81,200)	68.6 (9.9)	37 600 (82,800)	70.0 (10.2)	37 500 (82,600)	69.8 (10.1)
HD R2.8 m (9'2") DB Stick, 2.5 m <sup>3</sup> (3.27 yd <sup>3</sup> ) GD Bucket	36 700 (80,900)	68.4 (9.9)	37 500 (82,600)	69.8 (10.1)	37 400 (82,400)	69.6 (10.1)
<b>7.56 mt (16,700 lb) Counterweight + Long Wide Undercarriage Base Machine + Mass Boom</b>						
M2.55 m (8'4") TB Stick, 2.78 m <sup>3</sup> (3.64 yd <sup>3</sup> ) SDV Bucket	38 300 (84,500)	71.4 (10.4)	39 100 (86,200)	72.8 (10.6)	39 000 (86,000)	72.7 (10.5)
M2.55 m (8'4") TB Stick, 3.0 m <sup>3</sup> (3.92 yd <sup>3</sup> ) GD Bucket	38 000 (83,800)	70.8 (10.3)	38 800 (85,400)	72.2 (10.5)	38 700 (85,200)	72.0 (10.4)

All operating weights include a 90% fuel tank with 75 kg (165 lb) operator.

Base Machine Configurations	700 mm (28") Triple Grouser Shoes		800 mm (31") Triple Grouser Shoes	
	Weight	Ground Pressure	Weight	Ground Pressure
	kg (lb)	kPa (psi)	kg (lb)	kPa (psi)
<b>Base Frame with HD Track Rollers and Carrier Rollers for Long Wide Undercarriage</b>				
<b>7.56 mt (16,700 lb) Counterweight + Long Wide Undercarriage Base Machine + HD Reach Boom</b>				
HD R3.9 m (12'10") DB Stick, 2.5 m <sup>3</sup> (3.27 yd <sup>3</sup> ) GD Bucket	37 300 (82,300)	59.6 (8.6)	38 000 (83,800)	53.1 (7.7)
HD R3.2 m (10'6") DB Stick, 2.5 m <sup>3</sup> (3.27 yd <sup>3</sup> ) GD Bucket	37 200 (81,900)	59.3 (8.6)	37 800 (83,400)	52.8 (7.7)
HD R2.8 m (9'2") DB Stick, 2.5 m <sup>3</sup> (3.27 yd <sup>3</sup> ) GD Bucket	37 100 (81,700)	59.2 (8.6)	37 700 (83,100)	52.7 (7.6)
<b>7.56 mt (16,700 lb) Counterweight + Long Wide Undercarriage Base Machine + Mass Boom</b>				
M2.55 m (8'4") TB Stick, 2.78 m <sup>3</sup> (3.64 yd <sup>3</sup> ) SDV Bucket	38 700 (85,300)	61.8 (9.0)	39 300 (86,700)	55.0 (8.0)
M2.55 m (8'4") TB Stick, 3.0 m <sup>3</sup> (3.92 yd <sup>3</sup> ) GD Bucket	38 300 (84,500)	61.2 (8.9)	39 000 (86,000)	54.5 (7.9)

All operating weights include a 90% fuel tank with 75 kg (165 lb) operator.

# 340 Hydraulic Excavator Specifications

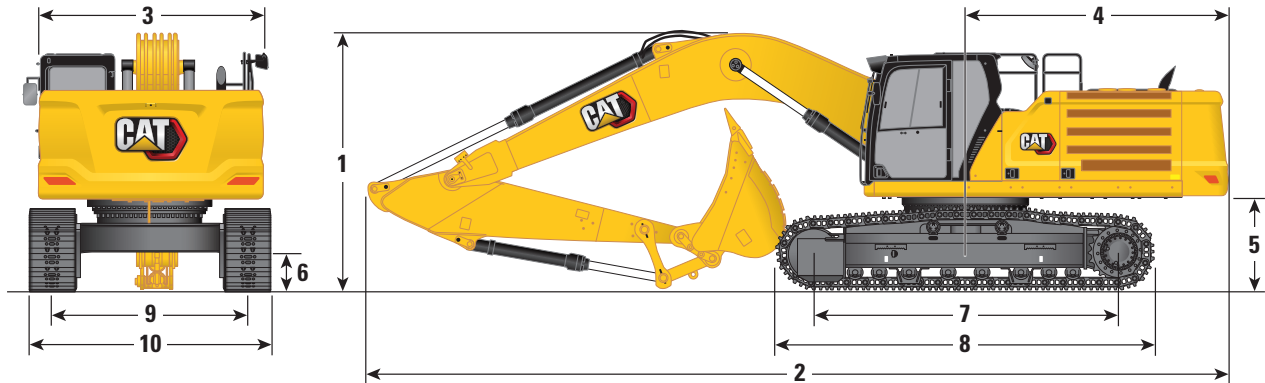
## Major Component Weights

	kg	lb
Base Machine with 7.56 mt (16,700 lb) Counterweight, HD Swing Frame, Base Frame with HD Track Rollers and Carrier Rollers for Long Wide Undercarriage	25 240	55,650
Track Shoes:		
600 mm (24") Width, 11 mm (0.43") Thick, Triple Grouser Track Shoes	4090	9,020
600 mm (24") Width, 15.5 mm (0.61") Thick, Double Grouser Track Shoes	4850	10,700
600 mm (24") Width, 15.5 mm (0.61") Thick, HD Triple Grouser Track Shoes	4750	10,470
700 mm (28") Width, 11 mm (0.43") Thick, Triple Grouser Track Shoes	4450	9,800
800 mm (31") Width, 13 mm (0.51") Thick, Triple Grouser Track Shoes	5100	11,230
Two Boom Cylinders	670	1,470
Weight of 90% Fuel Tank and 75 kg (165 lb) Operator	550	1,210
Counterweight:		
7.56 mt (16,700 lb) Counterweight	7560	16,670
Swing Frame:		
HD Swing Frame	3260	7,180
Undercarriage:		
Base Frame with HD Track Rollers and Carrier Rollers	8750	19,290
Booms (including lines, pins, stick cylinder):		
HD Reach Boom 6.5 m (21'4")	3480	7,670
Mass Boom 6.18 m (20'3")	3500	7,710
Sticks (including lines, pins, bucket cylinder, bucket linkage):		
HD Reach Stick R2.8DB (9'2")	1810	4,000
HD Reach Stick R3.2DB (10'6")	1920	4,220
HD Reach Stick R3.9DB (12'10")	2090	4,610
Mass Stick M2.55TB (8'4")	2120	4,680
Buckets (without linkage):		
2.5 m <sup>3</sup> (3.27 yd <sup>3</sup> ) GD	1540	3,380
2.78 m <sup>3</sup> (3.64 yd <sup>3</sup> ) SDV	2840	6,270
3.0 m <sup>3</sup> (3.92 yd <sup>3</sup> ) GD	2490	5,490
Quick Coupler (QC):		
Pin Grabber QC	700	1,550

# 340 Hydraulic Excavator Specifications

## Dimensions

All dimensions are approximate and may vary depending on bucket selection.



Undercarriage Option	Long Wide Undercarriage					
	Reach Boom 6.5 m (21'4")					
Boom Options	Reach Stick					
Stick Options	R3.9DB (12'10")		R3.2DB (10'6")		R2.8DB (9'2")	
<b>1 Machine Height:</b>						
Cab Height	3180 mm	10'5"	3180 mm	10'5"	3180 mm	10'5"
OPG Height	3330 mm	10'11"	3330 mm	10'11"	3330 mm	10'11"
Guardrails/Handrails Height	3180 mm	10'5"	3180 mm	10'5"	3180 mm	10'5"
With Boom/Stick/Bucket Installed	3660 mm	12'0"	3480 mm	11'5"	3650 mm	12'0"
With Boom/Stick Installed	3560 mm	11'8"	3330 mm	10'11"	3450 mm	11'4"
With Boom Installed	2880 mm	9'5"	2880 mm	9'5"	2880 mm	9'5"
With Boom/Stick/Bucket Installed (with auxiliary lines)	3670 mm	12'0"	3530 mm	11'7"	3670 mm	12'0"
With Boom/Stick Installed (with auxiliary lines)	3620 mm	11'11"	3410 mm	11'2"	3500 mm	11'6"
With Boom Installed (with auxiliary lines)	2970 mm	9'9"	2970 mm	9'9"	2970 mm	9'9"
<b>2 Machine Length:</b>						
With Boom/Stick/Bucket Installed	11 180 mm	36'8"	11 160 mm	36'7"	11 200 mm	36'9"
With Boom/Stick Installed	11 170 mm	36'8"	11 120 mm	36'6"	11 170 mm	36'8"
With Boom Installed	9960 mm	32'8"	9960 mm	32'8"	9960 mm	32'8"
With Boom/Stick/Bucket Installed (with auxiliary lines)	11 180 mm	36'8"	11 160 mm	36'7"	11 200 mm	36'9"
With Boom/Stick Installed (with auxiliary lines)	11 170 mm	36'8"	11 120 mm	36'6"	11 170 mm	36'8"
With Boom Installed (with auxiliary lines)	10 010 mm	32'10"	10 010 mm	32'10"	10 010 mm	32'10"
<b>3 Upperframe Width without Walkways</b>	2970 mm	9'9"	2970 mm	9'9"	2970 mm	9'9"
<b>4 Tail Swing Radius</b>	3530 mm	11'7"	3530 mm	11'7"	3530 mm	11'7"
<b>5 Counterweight Clearance</b>	1260 mm	4'2"	1260 mm	4'2"	1260 mm	4'2"
<b>6 Ground Clearance</b>	510 mm	1'8"	510 mm	1'8"	510 mm	1'8"
<b>7 Track Length – Length to Center of Rollers</b>	4040 mm	13'3"	4040 mm	13'3"	4040 mm	13'3"
<b>8 Track Length</b>	5030 mm	16'6"	5030 mm	16'6"	5030 mm	16'6"
<b>9 Track Gauge</b>	2740 mm	9'0"	2740 mm	9'0"	2740 mm	9'0"
<b>10 Track Width/Undercarriage Width (with steps):</b>						
600 mm (24") Shoes	3340 mm	10'11"	3340 mm	10'11"	3340 mm	10'11"
700 mm (28") Shoes	3440 mm	11'3"	3440 mm	11'3"	3440 mm	11'3"
800 mm (31") Shoes	3540 mm	11'7"	3540 mm	11'7"	3540 mm	11'7"
850 mm (33") Shoes	3590 mm	11'9"	3590 mm	11'9"	3590 mm	11'9"
Bucket Type	GD		GD		GD	
Bucket Capacity	2.50 m <sup>3</sup>	3.27 yd <sup>3</sup>	2.50 m <sup>3</sup>	3.27 yd <sup>3</sup>	2.50 m <sup>3</sup>	3.27 yd <sup>3</sup>
Bucket Tip Radius	1760 mm	5.8 ft	1760 mm	5.8 ft	1760 mm	5.8 ft

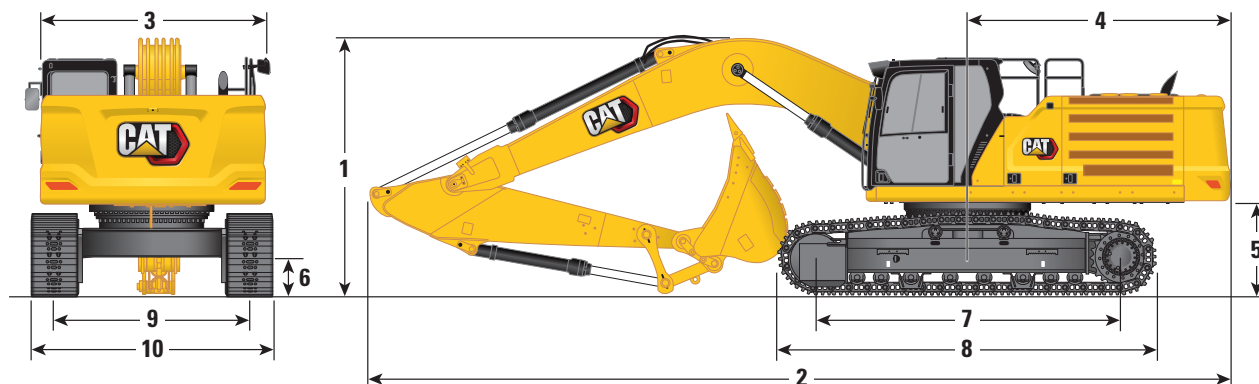
NOTE: Height and length shipping dimensions may vary due to track shoe width and bucket width.

(continued on next page)

# 340 Hydraulic Excavator Specifications

## Dimensions (continued)

All dimensions are approximate and may vary depending on bucket selection.



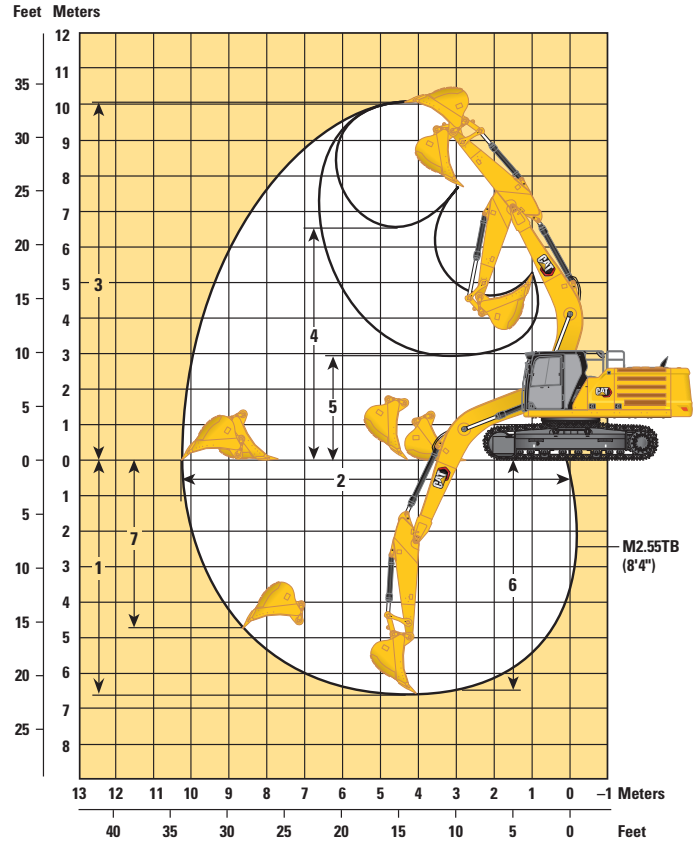
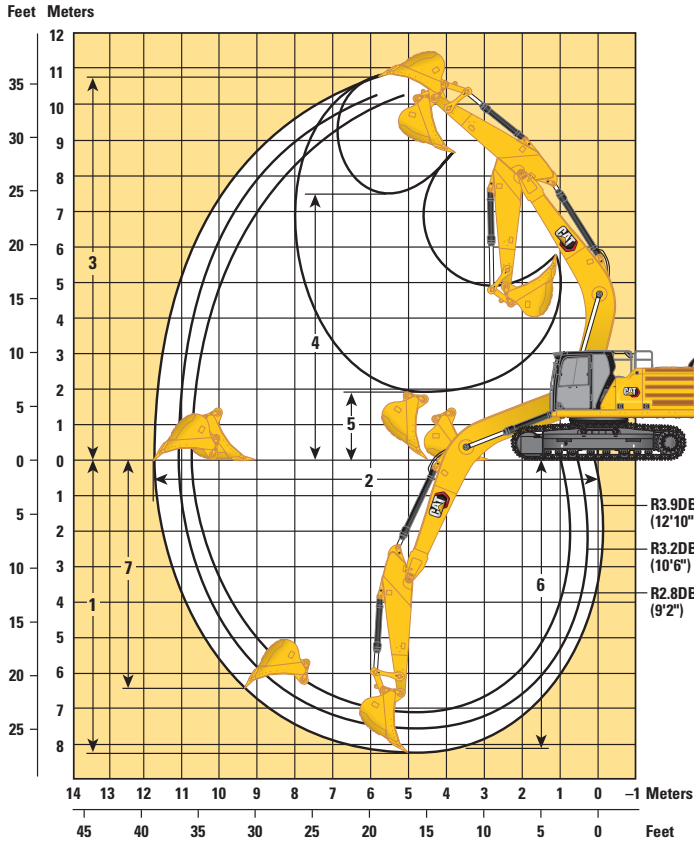
Undercarriage Option	Long Wide Undercarriage			
	Mass Boom 6.18 m (20'3")		Mass Stick M2.55TB (8'4")	
Boom Options				
Stick Options				
<b>1 Machine Height:</b>				
Cab Height	3180 mm	10'5"	3180 mm	10'5"
OPG Height	3330 mm	10'11"	3330 mm	10'11"
Guardrails/Handrails Height	3180 mm	10'5"	3180 mm	10'5"
With Boom/Stick/Bucket Installed	3620 mm	11'11"	3600 mm	11'10"
			3890 mm	12'9"
With Boom/Stick Installed	3410 mm	11'2"	3410 mm	11'2"
With Boom Installed	2830 mm	9'3"	2830 mm	9'3"
With Boom/Stick/Bucket Installed (with auxiliary lines)	3630 mm	11'11"	3600 mm	11'10"
			3900 mm	12'10"
With Boom/Stick Installed (with auxiliary lines)	3420 mm	11'3"	3420 mm	11'3"
With Boom Installed (with auxiliary lines)	2900 mm	9'6"	2900 mm	9'6"
<b>2 Machine Length:</b>				
With Boom/Stick/Bucket Installed	10 890 mm	35'9"	10 870 mm	35'8"
			10 980 mm	36'0"
With Boom/Stick Installed	10 830 mm	35'6"	10 830 mm	35'6"
With Boom Installed	9640 mm	31'8"	9640 mm	31'8"
With Boom/Stick/Bucket Installed (with auxiliary lines)	10 890 mm	35'9"	10 870 mm	35'8"
			10 980 mm	36'0"
With Boom/Stick Installed (with auxiliary lines)	10 830 mm	35'6"	10 830 mm	35'6"
With Boom Installed (with auxiliary lines)	9640 mm	31'8"	9640 mm	31'8"
<b>3 Upperframe Width without Walkways</b>	2970 mm	9'9"	2970 mm	9'9"
<b>4 Tail Swing Radius</b>	3530 mm	11'7"	3530 mm	11'7"
<b>5 Counterweight Clearance</b>	1260 mm	4'2"	1260 mm	4'2"
<b>6 Ground Clearance</b>	510 mm	1'8"	510 mm	1'8"
<b>7 Track Length – Length to Center of Rollers</b>	4040 mm	13'3"	4040 mm	13'3"
<b>8 Track Length</b>	5030 mm	16'6"	5030 mm	16'6"
<b>9 Track Gauge</b>	2740 mm	9'0"	2740 mm	9'0"
<b>10 Track Width/Undercarriage Width (with steps):</b>				
600 mm (24") Shoes	3340 mm	10'11"	3340 mm	10'11"
700 mm (28") Shoes	3440 mm	11'3"	3440 mm	11'3"
800 mm (31") Shoes	3540 mm	11'7"	3540 mm	11'7"
850 mm (33") Shoes	3590 mm	11'9"	3590 mm	11'9"
Bucket Type	SDV		GD	
Bucket Capacity	2.78 m <sup>3</sup>	3.64 yd <sup>3</sup>	3.00 m <sup>3</sup>	3.92 yd <sup>3</sup>
Bucket Tip Radius	1960 mm	6.4 ft	1880 mm	6.2 ft

NOTE: Height and length shipping dimensions may vary due to track shoe width and bucket width.

# 340 Hydraulic Excavator Specifications

## Working Ranges and Forces

All dimensions are approximate and may vary depending on bucket selection.



### Undercarriage Option

### Long Wide Undercarriage

### Boom Options

Reach Boom  
6.5 m (21'4")

Mass Boom  
6.18 m (20'3")

### Stick Options

Reach Stick

Mass Stick

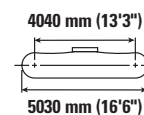
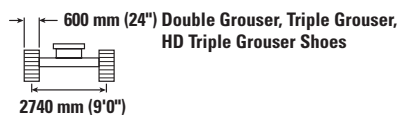
	R3.9DB (12'10")		R3.2DB (10'6")		R2.8DB (9'2")		M2.55TB (8'4")	
<b>1</b> Maximum Digging Depth	8180 mm	26'10"	7480 mm	24'6"	7080 mm	23'3"	6700 mm	22'0"
<b>2</b> Maximum Reach at Ground Line	11 720 mm	38'5"	11 020 mm	36'2"	10 720 mm	35'2"	10 330 mm	33'11"
<b>3</b> Maximum Cutting Height	10 780 mm	35'4"	10 360 mm	34'0"	10 410 mm	34'2"	10 010 mm	32'10"
<b>4</b> Maximum Loading Height	7510 mm	24'8"	7120 mm	23'4"	7120 mm	23'4"	6560 mm	21'6"
<b>5</b> Minimum Loading Height	1920 mm	6'4"	2620 mm	8'7"	3020 mm	9'11"	2870 mm	9'5"
<b>6</b> Maximum Depth Cut for 2440 mm (8'0") Level Bottom	8050 mm	26'5"	7320 mm	24'0"	6910 mm	22'8"	6540 mm	21'5"
<b>7</b> Maximum Vertical Wall Digging Depth	6360 mm	20'10"	5550 mm	18'3"	5520 mm	18'1"	4670 mm	15'4"
Bucket Digging Force (ISO)	209 kN	46,940 lbf	209 kN	46,940 lbf	209 kN	46,940 lbf	263 kN	59,210 lbf
Stick Digging Force (ISO)	144 kN	32,360 lbf	165 kN	37,200 lbf	184 kN	41,370 lbf	190 kN	42,780 lbf
Bucket Digging Force (ISO) – auto dig boost	227 kN	50,960 lbf	227 kN	50,960 lbf	227 kN	50,960 lbf	286 kN	64,290 lbf
Stick Digging Force (ISO) – auto dig boost	156 kN	35,130 lbf	180 kN	40,390 lbf	200 kN	44,920 lbf	207 kN	46,450 lbf
Bucket Type	GD		GD		GD		SDV	
Bucket Capacity	2.50 m <sup>3</sup>	3.27 yd <sup>3</sup>	2.50 m <sup>3</sup>	3.27 yd <sup>3</sup>	2.50 m <sup>3</sup>	3.27 yd <sup>3</sup>	2.78 m <sup>3</sup>	3.64 yd <sup>3</sup>
Bucket Tip Radius	1760 mm	5.8 ft	1760 mm	5.8 ft	1760 mm	5.8 ft	1960 mm	6.4 ft



# 340 Hydraulic Excavator Specifications

## HD Reach Boom Lift Capacities – Counterweight: 7.56 mt (16,700 lb) – without Bucket, Heavy Lift: On

Long Wide Undercarriage



		1500 mm/5'0"		3000 mm/10'0"		4500 mm/15'0"		6000 mm/20'0"		7500 mm/25'0"		9000 mm/30'0"		mm ft/in		
9000 mm 30'0"	kg lb													*6150 *13,650	*6150 *13,650	7360 23'8"
7500 mm 25'0"	kg lb									*7600 *16,800	*7600 *16,800			*5700 *12,600	*5700 *12,600	8550 27'9"
6000 mm 20'0"	kg lb									*7900 *17,300	*7900 *17,300	*7450 *14,400	6250 13,400	*5550 *12,250	*5550 *12,250	9340 30'6"
4500 mm 15'0"	kg lb							*9700 *21,000	*9700 *21,000	*8650 *18,850	8250 17,750	*8100 *17,700	6150 13,200	*5550 *12,250	5300 11,650	9850 32'2"
3000 mm 10'0"	kg lb					*15 250 *32,700	*15 250 *32,700	*11 500 *24,850	11 050 23,750	*9650 *20,900	7900 17,050	*8600 *18,700	6000 12,850	*5750 *12,650	4950 10,950	10 100 33'1"
1500 mm 5'0"	kg lb					*18 350 *39,550	15 800 34,050	*13 200 *28,550	10 450 22,450	*10 600 *23,000	7600 16,300	8500 18,300	5800 12,450	*6100 *13,400	4850 10,650	10 130 33'2"
0 mm 0'0"	kg lb			*8200 *18,700	*8200 *18,700	*19 950 *43,150	15 150 32,600	*14 400 *31,150	10 000 21,500	10 900 23,500	7300 15,750	8350 17,950	5650 12,150	*6650 *14,650	4900 10,800	9930 32'6"
-1500 mm -5'0"	kg lb	*8600 *19,200	*8600 *19,200	*12 900 *29,100	*12 900 *29,100	*20 200 *43,750	14 900 32,000	*14 850 *32,150	9750 21,000	10 750 23,100	7150 15,400	8250 17,800	5600 12,000	*7550 *16,700	5200 11,450	9480 31'0"
-3000 mm -10'0"	kg lb	*13 650 *30,550	*13 650 *30,550	*18 800 *42,550	*18 800 *42,550	*19 300 *41,800	14 900 32,050	*14 500 *31,300	9700 20,900	10 700 23,050	7150 15,350			8650 19,100	5800 12,850	8760 28'7"
-4500 mm -15'0"	kg lb	*19 600 *44,050	*19 600 *44,050	*23 850 *51,400	*23 850 *51,400	*17 200 *37,050	15 150 32,550	*13 000 *27,950	9850 21,200	*9750 21,200	7250			*9350 *20,550	7050 15,750	7680 24'11"
-6000 mm -20'0"	kg lb					*13 050 *27,500	*13 050 *27,500	*9200 *20,500	*9200 *20,500					*9100 *19,900	*9100 *19,900	6040 19'4"



ISO 10567:2007



\* Indicates that the load is limited by hydraulic lifting capacity rather than tipping load. The above loads are in compliance with hydraulic excavator lift capacity standard ISO 10567:2007. They do not exceed 87% of hydraulic lifting capacity or 75% of tipping load. Weight of all lifting accessories must be deducted from the above lifting capacities. Lifting capacities are based on the machine standing on a firm, uniform supporting surface. The use of a work tool attachment point to handle/lift objects, could affect the machine lift performance.

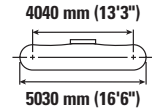
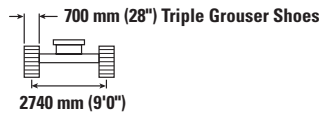
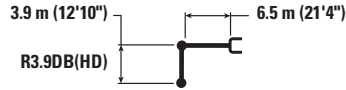
Lift capacity stays with ±5% for all available track shoes.

Always refer to the appropriate Operation and Maintenance Manual for specific product information.

# 340 Hydraulic Excavator Specifications

## HD Reach Boom Lift Capacities – Counterweight: 7.56 mt (16,700 lb) – without Bucket, Heavy Lift: On

Long Wide Undercarriage



		1500 mm/5'0"		3000 mm/10'0"		4500 mm/15'0"		6000 mm/20'0"		7500 mm/25'0"		9000 mm/30'0"		mm ft/in		
9000 mm 30'0"	kg lb													*6150 *13,650	*6150 *13,650	7360 23'8"
7500 mm 25'0"	kg lb								*7600 *16,800	*7600 *16,800				*5700 *12,600	*5700 *12,600	8550 27'9"
6000 mm 20'0"	kg lb								*7900 *17,300	*7900 *17,300	*7450 *14,400	6200 13,300		*5550 *12,250	*5550 *12,250	9340 30'6"
4500 mm 15'0"	kg lb							*9700 *21,000	*9700 *21,000	*8650 *18,850	8200 17,600	*8100 *17,700	6100 13,100	*5550 *12,250	5250 11,550	9850 32'2"
3000 mm 10'0"	kg lb			*15 250 *32,700	*15 250 *32,700	*11 500 *24,850	10 950 23,550	*9650 *20,900	7850 16,850	*8600 *18,500	5950 12,750		*5750 *12,650	4900 10,800	10 100 33'1"	
1500 mm 5'0"	kg lb			*18 350 *39,550	15 650 33,750	*13 200 *28,550	10 350 22,250	*10 600 *23,000	7500 16,150	8400 18,100	5750 12,350		*6100 *13,400	4800 10,550	10 130 33'2"	
0 mm 0'0"	kg lb			*8200 *18,700	*8200 *18,700	*19 950 *43,150	15 000 32,250	*14 400 *31,150	9900 21,300	10 800 23,250	7250 15,600	8250 17,750	5600 12,050	*6650 *14,650	4850 10,700	9930 32'6"
-1500 mm -5'0"	kg lb	*8600 *19,200	*8600 *19,200	*12 900 *29,100	*12 900 *29,100	*20 200 *43,750	14 750 31,700	*14 850 *32,000	9650 20,800	10 650 22,850	7100 15,250	8200 17,600	5500 11,900	*7550 *16,700	5150 11,350	9480 31'0"
-3000 mm -10'0"	kg lb	*13 650 *30,550	*13 650 *30,550	*18 800 *42,550	*18 800 *42,550	*19 300 *41,800	14 750 31,750	*14 500 *31,300	9600 20,700	10 600 22,800	7050 15,200			8550 18,900	5750 12,700	8760 28'7"
-4500 mm -15'0"	kg lb	*19 600 *44,050	*19 600 *44,050	*23 850 *51,400	*23 850 *51,400	*17 200 *37,050	15 000 32,250	*13 000 *27,950	9750 21,000	*9750 21,000	7200			*9350 *20,550	7000 15,600	7680 24'11"
-6000 mm -20'0"	kg lb					*13 050 *27,500	*13 050 *27,500	*9200 *20,000	*9200 *20,000					*9100 *19,900	*9100 *19,900	6040 19'4"



ISO 10567:2007



\* Indicates that the load is limited by hydraulic lifting capacity rather than tipping load. The above loads are in compliance with hydraulic excavator lift capacity standard ISO 10567:2007. They do not exceed 87% of hydraulic lifting capacity or 75% of tipping load. Weight of all lifting accessories must be deducted from the above lifting capacities. Lifting capacities are based on the machine standing on a firm, uniform supporting surface. The use of a work tool attachment point to handle/lift objects, could affect the machine lift performance.

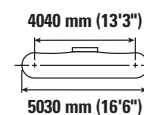
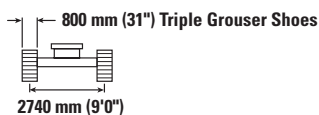
Lift capacity stays with ±5% for all available track shoes.

Always refer to the appropriate Operation and Maintenance Manual for specific product information.

# 340 Hydraulic Excavator Specifications

## HD Reach Boom Lift Capacities – Counterweight: 7.56 mt (16,700 lb) – without Bucket, Heavy Lift: On

Long Wide Undercarriage



Reach	Unit	1500 mm/5'0"		3000 mm/10'0"		4500 mm/15'0"		6000 mm/20'0"		7500 mm/25'0"		9000 mm/30'0"		mm ft/in		
		kg	lb	kg	lb	kg	lb	kg	lb	kg	lb	kg	lb	kg	lb	mm
9000 mm 30'0"	kg														*6150	7360
	lb														*13,650	23'8"
7500 mm 25'0"	kg									*7600	*7600				*5700	8550
	lb									*16,800	*16,800				*12,600	27'9"
6000 mm 20'0"	kg									*7900	*7900	*7450	6300		*5550	9340
	lb									*17,300	*17,300	*14,400	13,500		*12,250	30'6"
4500 mm 15'0"	kg							*9700	*9700	*8650	8300	*8100	6200		*5550	9850
	lb							*21,000	*21,000	*18,850	17,850	*17,700	13,300		*11,750	32'2"
3000 mm 10'0"	kg					*15 250	*15 250	*11 500	11 100	*9650	7950	*8600	6000		*5750	10 100
	lb					*32,700	*32,700	*24,850	23,900	*20,900	17,150	*18,700	12,950		*12,650	33'1"
1500 mm 5'0"	kg					*18 350	15 900	*13 200	10 500	*10 600	7650	8550	5850		*6100	4900
	lb					*39,550	34,250	*28,550	22,600	*23,000	16,400	18,400	12,550		*13,400	10,750
0 mm 0'0"	kg			*8200	*8200	*19 950	15 250	*14 400	10 050	11 000	7350	8400	5700		*6650	4950
	lb			*18,700	*18,700	*43,150	32,800	*31,150	21,650	23,650	15,850	18,100	12,250		*14,650	10,900
-1500 mm -5'0"	kg	*8600	*8600	*12 900	*12 900	*20 200	15 000	*14 850	9800	10 800	7200	8300	5600		*7550	5250
	lb	*19,200	*19,200	*29,100	*29,100	*43,750	32,200	*32,150	21,150	23,250	15,500	17,900	12,100		*16,700	11,550
-3000 mm -10'0"	kg	*13 650	*13 650	*18 800	*18 800	*19 300	15 000	*14 500	9750	10 800	7150				8700	5850
	lb	*30,550	*30,550	*42,550	*42,550	*41,800	32,250	*31,300	21,050	23,200	15,450				19,200	12,950
-4500 mm -15'0"	kg	*19 600	*19 600	*23 850	*23 850	*17 200	15 250	*13 000	9900	*9750	7300				*9350	7100
	lb	*44,050	*44,050	*51,400	*51,400	*37,050	32,750	*27,950	21,350						*20,550	15,850
-6000 mm -20'0"	kg					*13 050	*13 050	*9200	*9200						*9100	*9100
	lb					*27,500	*27,500								*19,900	*19,900



ISO 10567:2007



\* Indicates that the load is limited by hydraulic lifting capacity rather than tipping load. The above loads are in compliance with hydraulic excavator lift capacity standard ISO 10567:2007. They do not exceed 87% of hydraulic lifting capacity or 75% of tipping load. Weight of all lifting accessories must be deducted from the above lifting capacities. Lifting capacities are based on the machine standing on a firm, uniform supporting surface. The use of a work tool attachment point to handle/lift objects, could affect the machine lift performance.

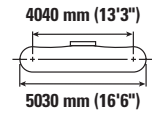
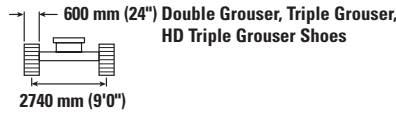
Lift capacity stays with ±5% for all available track shoes.

Always refer to the appropriate Operation and Maintenance Manual for specific product information.

# 340 Hydraulic Excavator Specifications

## HD Reach Boom Lift Capacities – Counterweight: 7.56 mt (16,700 lb) – without Bucket, Heavy Lift: On

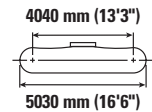
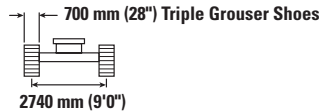
Long Wide Undercarriage



		3000 mm/10'0"		4500 mm/15'0"		6000 mm/20'0"		7500 mm/25'0"		9000 mm/30'0"		mm ft/in		
7500 mm 25'0"	kg lb							*8700 *16,300	8350 *16,300			*7350 *16,200	*7350 *16,200	7720 25'0"
6000 mm 20'0"	kg lb							*8800 *19,300	8250 17,750			*7150 *15,700	6550 14,600	8590 28'0"
4500 mm 15'0"	kg lb			*13 450 *28,900	*13 450 *28,900	*10 800 *23,400	*10 800 *23,400	*9450 *20,600	8000 17,250	*8450	6000	*7200 *15,800	5850 12,900	9140 29'10"
3000 mm 10'0"	kg lb			*17 050 *36,600	16 250 35,100	*12 500 *27,050	10 700 23,000	*10 350 *22,450	7700 16,600	8500 18,300	5850 12,600	*7450 *16,400	5450 12,050	9410 30'10"
1500 mm 5'0"	kg lb			*19 600 *42,250	15 300 32,900	*14 000 *30,250	10 150 21,900	10 950 23,600	7450 16,000	8350 18,000	5700 12,300	7800 17,150	5350 11,750	9440 30'11"
0 mm 0'0"	kg lb			*20 400 *44,200	14 850 31,950	*14 850 *32,150	9800 21,150	10 750 23,100	7200 15,550	8250 17,750	5600 12,100	8000 17,550	5450 11,950	9220 30'2"
-1500 mm -5'0"	kg lb	*14 100 *31,900	*14 100 *31,900	*20 000 *43,350	14 800 31,750	14 850 31,950	9700 20,850	10 650 22,900	7100 15,350			8600 18,900	5800 12,800	8740 28'7"
-3000 mm -10'0"	kg lb	*22 250 *50,350	*22 250 *50,350	*18 550 *40,150	14 900 32,000	*14 100 *30,500	9700 20,900	10 700 23,000	7150 15,450			9850 21,850	6650 14,750	7950 25'11"
-4500 mm -15'0"	kg lb	*20 800 *44,850	*20 800 *44,850	*15 700 *33,700	15 200 32,750	*11 900 *25,250	9950 21,450					*10 050 *22,100	8500 19,100	6740 21'10"

## HD Reach Boom Lift Capacities – Counterweight: 7.56 mt (16,700 lb) – without Bucket, Heavy Lift: On

Long Wide Undercarriage



		3000 mm/10'0"		4500 mm/15'0"		6000 mm/20'0"		7500 mm/25'0"		9000 mm/30'0"		mm ft/in		
7500 mm 25'0"	kg lb							*8700 *16,300	8400 *16,300			*7350 *16,200	*7350 *16,200	7720 25'0"
6000 mm 20'0"	kg lb							*8800 *19,300	8300 17,850			*7150 *15,700	6650 14,750	8590 28'0"
4500 mm 15'0"	kg lb			*13 450 *28,900	*13 450 *28,900	*10 800 *23,400	*10 800 *23,400	*9450 *20,600	8100 17,400	*8450	6050	*7200 *15,800	5900 13,050	9140 29'10"
3000 mm 10'0"	kg lb			*17 050 *36,600	16 400 35,350	*12 500 *27,050	10 750 23,200	*10 350 *22,450	7800 16,750	8600 18,450	5900 12,700	*7450 *16,400	5500 12,150	9410 30'10"
1500 mm 5'0"	kg lb			*19 600 *42,250	15 400 33,200	*14 000 *30,250	10 250 22,050	11 050 23,800	7500 16,150	8450 18,150	5750 12,400	7850 17,300	5400 11,850	9440 30'11"
0 mm 0'0"	kg lb			*20 400 *44,200	15 000 32,250	*14 850 *32,150	9900 21,350	10 850 23,300	7300 15,700	8350 17,950	5650 12,200	8050 17,750	5500 12,050	9220 30'2"
-1500 mm -5'0"	kg lb	*14 100 *31,900	*14 100 *31,900	*20 000 *43,350	14 900 32,050	*14 950 32,250	9750 21,000	10 750 23,100	7200 15,500			8650 19,100	5850 12,950	8740 28'7"
-3000 mm -10'0"	kg lb	*22 250 *50,350	*22 250 *50,350	*18 550 *40,150	15 050 32,300	*14 100 *30,500	9800 21,100	10 800 23,200	7250 15,600			9950 *22,050	6700 14,850	7950 25'11"
-4500 mm -15'0"	kg lb	*20 800 *44,850	*20 800 *44,850	*15 700 *33,700	15 350 33,050	*11 900 *25,250	10 050 21,650					*10 050 *22,100	8600 19,250	6740 21'10"



ISO 10567:2007



\* Indicates that the load is limited by hydraulic lifting capacity rather than tipping load. The above loads are in compliance with hydraulic excavator lift capacity standard ISO 10567:2007. They do not exceed 87% of hydraulic lifting capacity or 75% of tipping load. Weight of all lifting accessories must be deducted from the above lifting capacities. Lifting capacities are based on the machine standing on a firm, uniform supporting surface. The use of a work tool attachment point to handle/lift objects, could affect the machine lift performance.

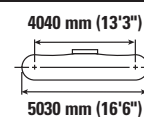
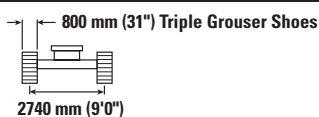
Lift capacity stays with ±5% for all available track shoes.

Always refer to the appropriate Operation and Maintenance Manual for specific product information.

# 340 Hydraulic Excavator Specifications

## HD Reach Boom Lift Capacities – Counterweight: 7.56 mt (16,700 lb) – without Bucket, Heavy Lift: On

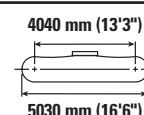
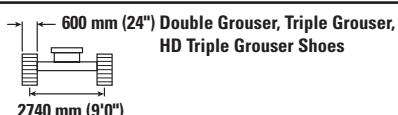
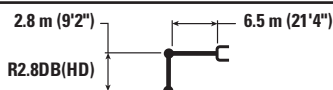
Long Wide Undercarriage



		3000 mm/10'0"		4500 mm/15'0"		6000 mm/20'0"		7500 mm/25'0"		9000 mm/30'0"		mm ft/in		
7500 mm 25'0"	kg lb							*8700 *16,300	8500 *16,300			*7350 *16,200	*7350 *16,200	7720 25'0"
6000 mm 20'0"	kg lb							*8800 *19,300	8450 18,150			*7150 *15,700	6750 14,950	8590 28'0"
4500 mm 15'0"	kg lb			*13 450 *28,900	*13 450 *28,900	*10 800 *23,400	*10 800 *23,400	*9450 *20,600	8200 17,650	*8450	6150	*7200 *15,800	6000 13,250	9140 29'10"
3000 mm 10'0"	kg lb			*17 050 *36,600	16 650 35,850	*12 500 *27,050	10 900 23,550	*10 350 *22,450	7900 17,000	8750 18,800	6000 12,900	*7450 *16,400	5600 12,350	9410 30'10"
1500 mm 5'0"	kg lb			*19 600 *42,250	15 650 33,700	*14 000 *30,250	10 400 22,400	*11 200 *24,200	7600 16,400	8600 18,450	5850 12,600	*8000 *17,600	5450 12,050	9440 30'11"
0 mm 0'0"	kg lb			*20 400 *44,200	15 250 32,750	*14 850 *32,150	10 050 21,650	11 000 23,700	7400 15,950	8450 18,250	5750 12,400	8200 18,050	5600 12,250	9220 30'2"
-1500 mm -5'0"	kg lb		*14 100 *31,900	*14 100 *31,900	*20 000 *43,350	15 150 32,550	*14 950 *32,350	9900 21,350	10 900 23,500	7300 15,750		8800 19,400	5950 13,150	8740 28'7"
-3000 mm -10'0"	kg lb		*22 250 *50,350	*22 250 *50,350	*18 550 *40,150	15 250 32,800	*14 100 *30,500	9950 21,450	*10 950 *23,400	7350 15,850		*10 000 *22,050	6850 15,100	7950 25'11"
-4500 mm -15'0"	kg lb		*20 800 *44,850	*20 800 *44,850	*15 700 *33,700	15 600 33,550	*11 900 *25,250	10 200				*10 050 *22,100	8750 19,550	6740 21'10"

## HD Reach Boom Lift Capacities – Counterweight: 7.56 mt (16,700 lb) – without Bucket, Heavy Lift: On

Long Wide Undercarriage



		3000 mm/10'0"		4500 mm/15'0"		6000 mm/20'0"		7500 mm/25'0"		9000 mm/30'0"		mm ft/in		
7500 mm 25'0"	kg lb											*9300 *20,600	8500 19,150	7350 23'9"
6000 mm 20'0"	kg lb					*10 050 *21,800	*10 050 *21,800	*9350 *20,450	8200 17,600			*8950 *19,700	6950 15,500	8260 26'11"
4500 mm 15'0"	kg lb			*14 500 *31,150	*14 500 *31,150	*11 400 *24,700	11 150 24,100	*9900 *21,600	8000 17,150			8900 *19,700	6150 13,600	8830 28'10"
3000 mm 10'0"	kg lb			*18 050 *38,750	16 000 34,550	*13 050 *28,200	10 600 22,850	*10 750 *23,250	7700 16,550	8500	5850	8350 18,400	5750 12,650	9110 29'10"
1500 mm 5'0"	kg lb			*16 850 *40,950	15 150 32,700	*14 400 *31,100	10 150 21,800	10 950 23,600	7450 16,000	8400	5750	8200 18,050	5600 12,350	9140 29'11"
0 mm 0'0"	kg lb			*19 900 *44,400	14 900 32,050	15 050 32,350	9850 21,200	10 800 23,200	7250 15,650			8450 18,550	5750 12,650	8920 29'2"
-1500 mm -5'0"	kg lb		*13 200 *30,050	*13 200 *30,050	*19 700 *42,800	14 900 32,100	*14 900 *32,100	9750 21,000	10 700 23,050	7200 15,500		9150 20,150	6200 13,650	8420 27'6"
-3000 mm -10'0"	kg lb		*23 600 *51,250	*23 600 *51,250	*17 950 *38,850	15 050 32,350	*13 800 *29,750	9800 21,150	*10 450 23,000	7300		*10 200 *22,500	7200 15,950	7590 24'9"
-4500 mm -15'0"	kg lb		*18 800 *40,450	*18 800 *40,450	*14 600 *31,250	*14 600 *31,250	*10 850 *22,750	10 150 21,900				*9950 *21,850	9500 21,300	6310 20'5"



ISO 10567:2007



\* Indicates that the load is limited by hydraulic lifting capacity rather than tipping load. The above loads are in compliance with hydraulic excavator lift capacity standard ISO 10567:2007. They do not exceed 87% of hydraulic lifting capacity or 75% of tipping load. Weight of all lifting accessories must be deducted from the above lifting capacities. Lifting capacities are based on the machine standing on a firm, uniform supporting surface. The use of a work tool attachment point to handle/lift objects, could affect the machine lift performance.

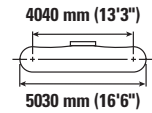
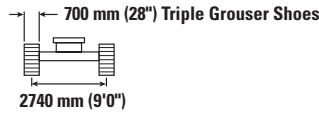
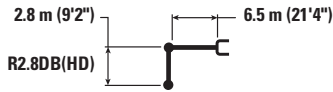
Lift capacity stays with ±5% for all available track shoes.

Always refer to the appropriate Operation and Maintenance Manual for specific product information.

# 340 Hydraulic Excavator Specifications

## HD Reach Boom Lift Capacities – Counterweight: 7.56 mt (16,700 lb) – without Bucket, Heavy Lift: On

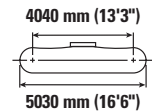
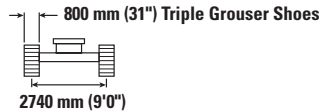
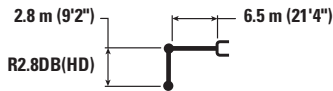
Long Wide Undercarriage



		3000 mm/10'0"		4500 mm/15'0"		6000 mm/20'0"		7500 mm/25'0"		9000 mm/30'0"		mm ft/in		
7500 mm 25'0"	kg lb											*9300 *20,600	8600 19,300	7350 23'9"
6000 mm 20'0"	kg lb					*10 050 *21,800	*10 050 *21,800	*9350 *20,450	8250 17,750			*8950 *19,700	7000 15,600	8260 26'11"
4500 mm 15'0"	kg lb			*14 500 *31,150	*14 500 *31,150	*11 400 *24,700	11 250 24,250	*9900 *21,600	8050 17,300			*8950 *19,700	6200 13,750	8830 28'10"
3000 mm 10'0"	kg lb			*18 050 *38,750	16 150 34,800	*13 050 *28,200	10 700 23,050	*10 750 *23,250	7750 16,700	8600	5900	8450 18,600	5800 12,800	9110 29'10"
1500 mm 5'0"	kg lb			*16 850 *40,950	15 300 32,950	*14 400 *31,100	10 200 22,000	11 050 23,800	7500 16,150	8450	5800	8300 18,200	5650 12,500	9140 29'11"
0 mm 0'0"	kg lb			*19 900 *44,400	15 050 32,300	*15 050 *32,600	9950 21,400	10 850 23,400	7300 15,750			8500 18,700	5800 12,750	8920 29'2"
-1500 mm -5'0"	kg lb	*13 200 *30,050	*13 200 *30,050	*19 700 *42,800	15 000 32,300	*14 900 *32,300	9850 21,200	10 800 23,250	7250 15,650			9200 20,300	6250 13,800	8420 27'6"
-3000 mm -10'0"	kg lb	*23 600 *51,250	*23 600 *51,250	*17 950 *38,850	15 200 32,650	*13 800 *29,750	9900 21,350	*10 450	7350			*10 200 *22,500	7250 16,100	7590 24'9"
-4500 mm -15'0"	kg lb	*18 800 *40,450	*18 800 *40,450	*14 600 *31,250	*14 600 *31,250	*10 850 *22,750	10 250 22,100					*9950 *21,850	9600 21,500	6310 20'5"

## HD Reach Boom Lift Capacities – Counterweight: 7.56 mt (16,700 lb) – without Bucket, Heavy Lift: On

Long Wide Undercarriage



		3000 mm/10'0"		4500 mm/15'0"		6000 mm/20'0"		7500 mm/25'0"		9000 mm/30'0"		mm ft/in		
7500 mm 25'0"	kg lb											*9300 *20,600	8700 19,550	7350 23'9"
6000 mm 20'0"	kg lb					*10 050 *21,800	*10 050 *21,800	*9350 *20,450	8400 18,000			*8950 *19,700	7150 15,850	8260 26'11"
4500 mm 15'0"	kg lb			*14 500 *31,150	*14 500 *31,150	*11 400 *24,700	*11 400 24,600	*9900 *21,600	8150 17,550			*8950 *19,700	6300 13,950	8830 28'10"
3000 mm 10'0"	kg lb			*18 050 *38,750	16 350 35,350	*13 050 *28,200	10 850 23,400	*10 750 *23,250	7900 16,950	8750	6000	8550 18,900	5900 13,000	9110 29'10"
1500 mm 5'0"	kg lb			*16 850 *40,950	15 550 33,450	*14 400 *31,100	10 350 22,350	11 250 24,200	7600 16,400	8600	5900	8400 18,550	5750 12,700	9140 29'11"
0 mm 0'0"	kg lb			*19 900 *44,400	15 250 32,800	*15 050 *32,600	10 100 21,750	11 050 23,800	7450 16,050			8650 19,050	5900 13,000	8920 29'2"
-1500 mm -5'0"	kg lb	*13 200 *30,050	*13 200 *30,050	*19 700 *42,800	15 250 32,800	*14 900 *32,300	10 000 21,500	11 000 23,650	7400 15,900			9350 20,650	6350 14,000	8420 27'6"
-3000 mm -10'0"	kg lb	*23 600 *51,250	*23 600 *51,250	*17 950 *38,850	15 450 33,150	*13 800 *29,750	10 050 21,700	*10 450	7500			*10 200 *22,500	7400 16,350	7590 24'9"
-4500 mm -15'0"	kg lb	*18 800 *40,450	*18 800 *40,450	*14 600 *31,250	*14 600 *31,250	*10 850 *22,750	10 400 22,450					*9950 *21,850	9750 21,850	6310 20'5"



ISO 10567:2007



\* Indicates that the load is limited by hydraulic lifting capacity rather than tipping load. The above loads are in compliance with hydraulic excavator lift capacity standard ISO 10567:2007. They do not exceed 87% of hydraulic lifting capacity or 75% of tipping load. Weight of all lifting accessories must be deducted from the above lifting capacities. Lifting capacities are based on the machine standing on a firm, uniform supporting surface. The use of a work tool attachment point to handle/lift objects, could affect the machine lift performance.

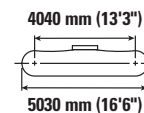
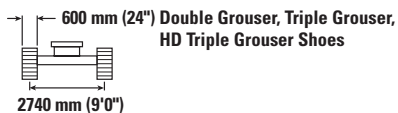
Lift capacity stays with ±5% for all available track shoes.

Always refer to the appropriate Operation and Maintenance Manual for specific product information.

# 340 Hydraulic Excavator Specifications

## Mass Boom Lift Capacities – Counterweight: 7.56 mt (16,700 lb) – without Bucket, Heavy Lift: On

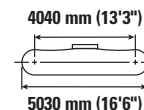
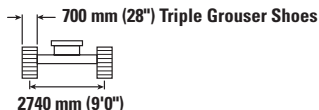
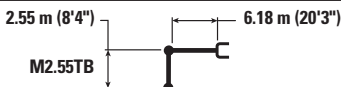
Long Wide Undercarriage



Boom Length mm ft/in	Weight kg lb	3000 mm/10'0"		4500 mm/15'0"		6000 mm/20'0"		7500 mm/25'0"		Undercarriage		mm ft/in
		Double Grouser	Triple Grouser	Double Grouser	Triple Grouser	Double Grouser	Triple Grouser	Double Grouser	Triple Grouser	Double Grouser	Triple Grouser	
7500 mm 25'0"	kg lb					*10 150 *22,350	*10 150 *22,350			*8950 *19,900	*8950 *19,900	6600 21'3"
6000 mm 20'0"	kg lb					*10 500 *22,850	*10 500 *22,850	*9900	7900	*8550 *18,850	7700 17,200	7600 24'9"
4500 mm 15'0"	kg lb			*14 700 *31,600	*14 700 *31,600	*11 700 *25,300	10 950 23,600	*10 250 *22,300	7750 16,650	*8550 *18,850	6700 14,750	8220 26'10"
3000 mm 10'0"	kg lb			*18 000 *38,700	15 800 34,100	*13 150 *28,450	10 400 22,400	*10 900 *23,650	7500 16,100	*8900 *19,550	6150 13,600	8520 27'11"
1500 mm 5'0"	kg lb			*20 000 *43,200	14 950 32,250	*14 400 *31,100	9900 21,350	*10 800 23,200	7250 15,600	8850 19,500	6000 13,200	8550 28'0"
0 mm 0'0"	kg lb			*20 200 *43,800	14 700 31,600	14 850 31,900	9650 20,800	*10 600 22,800	7100 15,250	9150 20,150	6150 13,550	8310 27'3"
-1500 mm -5'0"	kg lb	*17 900 *40,650	*17 900 *40,650	*19 200 *41,600	14 700 31,600	*14 500 *31,400	9600 20,650	10 600 22,800	7050 15,250	10 100 22,250	6750 14,900	7770 25'5"
-3000 mm -10'0"	kg lb	*21 950 *47,700	*21 950 *47,700	*16 900 *36,550	14 950 32,100	*12 850 *27,600	9700 20,950			*10 600 *23,350	8100 18,050	6870 22'4"
-4500 mm -15'0"	kg lb			*12 400 *26,150	*12 400 *26,150					*9850 *21,450	*9850 *21,450	5410 17'5"

## Mass Boom Lift Capacities – Counterweight: 7.56 mt (16,700 lb) – without Bucket, Heavy Lift: On

Long Wide Undercarriage



Boom Length mm ft/in	Weight kg lb	3000 mm/10'0"		4500 mm/15'0"		6000 mm/20'0"		7500 mm/25'0"		Undercarriage		mm ft/in
		Double Grouser	Triple Grouser	Double Grouser	Triple Grouser	Double Grouser	Triple Grouser	Double Grouser	Triple Grouser	Double Grouser	Triple Grouser	
7500 mm 25'0"	kg lb					*10 150 *22,350	*10 150 *22,350			*8950 *19,900	*8950 *19,900	6600 21'3"
6000 mm 20'0"	kg lb					*10 500 *22,850	*10 500 *22,850	*9900	7950	*8550 *18,850	7800 17,350	7600 24'9"
4500 mm 15'0"	kg lb			*14 700 *31,600	*14 700 *31,600	*11 700 *25,300	11 050 23,800	*10 250 *22,300	7800 16,800	*8550 *18,850	6750 14,900	8220 26'10"
3000 mm 10'0"	kg lb			*18 000 *38,700	15 950 34,400	*13 150 *28,450	10 500 22,600	*10 900 *23,650	7550 16,250	*8900 *19,550	6200 13,700	8520 27'11"
1500 mm 5'0"	kg lb			*20 000 *43,200	15 100 32,500	*14 400 *31,100	10 000 21,550	*10 900 23,400	7300 15,750	8950 19,700	6050 13,350	8550 28'0"
0 mm 0'0"	kg lb			*20 200 *43,800	14 800 31,850	*14 900 32,200	9750 20,950	*10 700 23,050	7150 15,400	9250 20,350	6250 13,700	8310 27'3"
-1500 mm -5'0"	kg lb	*17 900 *40,650	*17 900 *40,650	*19 200 *41,600	14 850 31,850	*14 500 *31,400	9650 20,800	10 700 23,000	7150 15,400	10 200 22,450	6800 15,050	7770 25'5"
-3000 mm -10'0"	kg lb	*21 950 *47,700	*21 950 *47,700	*16 900 *36,550	15 050 32,350	*12 850 *27,600	9800 21,150			*10 600 *23,350	8200 18,200	6870 22'4"
-4500 mm -15'0"	kg lb			*12 400 *26,150	*12 400 *26,150					*9850 *21,450	*9850 *21,450	5410 17'5"



ISO 10567:2007



\* Indicates that the load is limited by hydraulic lifting capacity rather than tipping load. The above loads are in compliance with hydraulic excavator lift capacity standard ISO 10567:2007. They do not exceed 87% of hydraulic lifting capacity or 75% of tipping load. Weight of all lifting accessories must be deducted from the above lifting capacities. Lifting capacities are based on the machine standing on a firm, uniform supporting surface. The use of a work tool attachment point to handle/lift objects, could affect the machine lift performance.

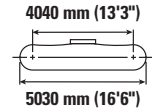
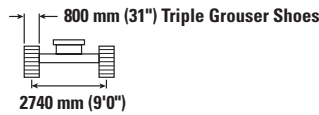
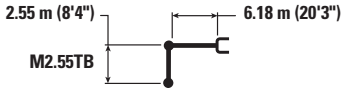
Lift capacity stays with ±5% for all available track shoes.







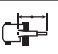

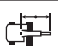


Always refer to the appropriate Operation and Maintenance Manual for specific product information.

# 340 Hydraulic Excavator Specifications

## Mass Boom Lift Capacities – Counterweight: 7.56 mt (16,700 lb) – without Bucket, Heavy Lift: On

Long Wide Undercarriage



		3000 mm/10'0"		4500 mm/15'0"		6000 mm/20'0"		7500 mm/25'0"				mm ft/in
												
7500 mm 25'0"	kg lb					*10 150 *22,350	*10 150 *22,350			*8950 *19,900	*8950 *19,900	6600 21'3"
6000 mm 20'0"	kg lb					*10 500 *22,850	*10 500 *22,850	*9900	8100	*8550 *18,850	7900 17,600	7600 24'9"
4500 mm 15'0"	kg lb			*14 700 *31,600	*14 700 *31,600	*11 700 *25,300	11 200 24,100	*10 250 *22,300	7950 17,050	*8550 *18,850	6850 15,150	8220 26'10"
3000 mm 10'0"	kg lb			*18 000 *38,700	16 200 34,900	*13 150 *28,450	10 650 22,900	*10 900 *23,650	7650 16,500	*8900 *19,550	6300 13,900	8520 27'11"
1500 mm 5'0"	kg lb			*20 000 *43,200	15 350 33,000	*14 400 *31,100	10 150 21,900	11 050 23,800	7450 16,000	9100 20,050	6150 13,550	8550 28'0"
0 mm 0'0"	kg lb			*20 200 *43,800	15 050 32,350	*14 900 *32,250	9900 21,300	10 900 23,400	7250 15,650	9400 20,700	6350 13,950	8310 27'3"
-1500 mm -5'0"	kg lb	*17 900 *40,650	*17 900 *40,650	*19 200 *41,600	15 050 32,350	*14 500 *31,400	9850 21,150	10 850 23,400	7250 15,650	10 350 22,850	6950 15,300	7770 25'5"
-3000 mm -10'0"	kg lb	*21 950 *47,700	*21 950 *47,700	*16 900 *36,550	15 300 32,850	*12 850 *27,600	9950 21,500			*10 600 *23,350	8350 18,500	6870 22'4"
-4500 mm -15'0"	kg lb			*12 400 *26,150	*12 400 *26,150					*9850 *21,450	*9850 *21,450	5410 17'5"



ISO 10567:2007



\* Indicates that the load is limited by hydraulic lifting capacity rather than tipping load. The above loads are in compliance with hydraulic excavator lift capacity standard ISO 10567:2007. They do not exceed 87% of hydraulic lifting capacity or 75% of tipping load. Weight of all lifting accessories must be deducted from the above lifting capacities. Lifting capacities are based on the machine standing on a firm, uniform supporting surface. The use of a work tool attachment point to handle/lift objects, could affect the machine lift performance.

Lift capacity stays with ±5% for all available track shoes.

Always refer to the appropriate Operation and Maintenance Manual for specific product information.



# 340 Hydraulic Excavator Specifications

## Bucket Specifications and Compatibility – Africa, Middle East and Eurasia

	Linkage	Width		Capacity		Weight		Fill %	Long Wide Undercarriage 7.56 mt (16,700 lb) Counterweight				
		mm	in	m <sup>3</sup>	yd <sup>3</sup>	kg	lb		Reach HD			Mass M2.55 (8'4")	
									R2.8 (9'2") HD	R3.2 (10'6") HD	R3.9 (12'10") HD		
<b>Pin-On (No Quick Coupler)</b>													
General Duty	DB	1650	65	2.12	2.77	1361	3,000	100	●	●	⊙		
	DB	1800	71	2.36	3.09	1465	3,231	100	⊙	⊙	⊖		
	DB	1750	69	2.50	3.27	1535	3,381	100	⊙	⊖	○		
Heavy Duty	DB	1500	59	1.88	2.46	1653	3,641	100	●	●	⊙		
	DB	1650	65	2.12	2.77	1741	3,834	100	●	⊙	⊖		
	DB	1800	72	2.36	3.08	1774	3,911	100	⊙	⊖	○		
	DB	1750	69	2.50	3.27	1851	4,077	100	⊖	⊖	○		
Severe Duty – V Edge	DB	1500	59	1.91	2.50	1666	3,672	90	●	●	⊙		
	DB	1650	66	2.15	2.81	1802	3,972	90	●	●	⊖		
	DB	1800	71	2.30	3.01	1991	4,385	90	⊙	⊙	⊖		
General Duty	TB	1800	71	2.60	3.40	2119	4,671	100				⊙	
	TB	2050	81	3.00	3.92	2492	5,488	100				⊖	
Heavy Duty	TB	1750	69	2.50	3.27	2258	4,978	100				⊙	
	TB	1850	72	2.69	3.52	2387	5,262	100				⊖	
	TB	1900	75	2.80	3.66	2548	5,612	100				⊖	
Severe Duty	TB	1600	63	2.20	2.88	2416	5,321	90				●	
	TB	1800	71	2.60	3.40	2618	5,766	90				⊙	
Severe Duty – V Edge	TB	1650	66	2.41	3.15	2367	5,218	90				●	
	TB	1700	67	2.41	3.15	2597	5,720	90				⊙	
	TB	1900	75	2.78	3.64	2844	6,264	90				⊖	
	TB	1900	75	2.80	3.66	2601	5,728	90				⊖	
Extreme Duty – V Edge Power	TB	1850	73	2.50	3.27	2931	6,455	90				⊖	
Maximum load with pin-on (payload + bucket)									kg	6120	5780	5040	6730
									lb	13,492	12,743	11,111	14,837

The above loads are in compliance with hydraulic excavator standard EN474-5:2006 + A3:2013, they do not exceed 87% of hydraulic lifting capacity or 75% of tipping capacity with front linkage fully extended at ground line with bucket curled.

Capacity based on ISO 7451:2007.

Bucket weight with General Duty tips.

### Maximum Material Density:

- 2100 kg/m<sup>3</sup> (3,500 lb/yd<sup>3</sup>)
- ⊙ 1800 kg/m<sup>3</sup> (3,000 lb/yd<sup>3</sup>)
- ⊖ 1500 kg/m<sup>3</sup> (2,500 lb/yd<sup>3</sup>)
- 1200 kg/m<sup>3</sup> (2,000 lb/yd<sup>3</sup>)

Caterpillar recommends using appropriate work tools to maximize the value customers receive from our products. Use of work tools, including buckets, which are outside of Caterpillar's recommendations or specifications for weight, dimensions, flows, pressures, etc. may result in less-than-optimal performance, including but not limited to reductions in production, stability, reliability, and component durability. Improper use of a work tool resulting in sweeping, prying, twisting and/or catching of heavy loads will reduce the life of the boom and stick.

(continued on next page)

# 340 Hydraulic Excavator Specifications

## Bucket Specifications and Compatibility – Africa, Middle East and Eurasia (continued)

	Linkage	Long Wide Undercarriage										
		7.56 mt (16,700 lb) Counterweight										Mass M2.55 (8'4")
		Width		Capacity		Weight		Fill %	Reach HD			
mm	in	m <sup>3</sup>	yd <sup>3</sup>	kg	lb	R2.8 (9'2") HD	R3.2 (10'6") HD		R3.9 (12'10") HD			
<b>With Cat Pin Grabber Coupler</b>												
General Duty	DB	1650	65	2.12	2.77	1361	3,000	100	⊙	⊙	○	
	DB	1800	71	2.36	3.09	1465	3,231	100	⊖	⊖	○	
	DB	1750	69	2.50	3.27	1535	3,381	100	⊖	○	◇	
Heavy Duty	DB	1500	59	1.88	2.46	1653	3,641	100	●	⊙	⊖	
	DB	1650	65	2.12	2.77	1741	3,834	100	⊙	⊖	○	
	DB	1800	72	2.36	3.08	1774	3,911	100	⊖	○	◇	
	DB	1750	69	2.50	3.27	1851	4,077	100	⊖	○	◇	
Severe Duty – V Edge	DB	1500	59	1.91	2.50	1666	3,672	90	●	⊙	⊖	
	DB	1650	66	2.15	2.81	1802	3,972	90	⊙	⊖	○	
	DB	1800	71	2.30	3.01	1991	4,385	90	⊖	⊖	◇	
General Duty	TB	1800	71	2.60	3.40	2119	4,671	100				○
	TB	2050	81	3.00	3.92	2492	5,488	100				◇
Heavy Duty	TB	1750	69	2.50	3.27	2258	4,978	100				○
	TB	1850	72	2.69	3.52	2387	5,262	100				○
	TB	1900	75	2.80	3.66	2548	5,612	100				◇
Severe Duty	TB	1600	63	2.20	2.88	2416	5,321	90				⊖
	TB	1800	71	2.60	3.40	2618	5,766	90				○
Severe Duty – V Edge	TB	1650	66	2.41	3.15	2367	5,218	90				⊖
	TB	1700	67	2.41	3.15	2597	5,720	90				○
	TB	1900	75	2.78	3.64	2844	6,264	90				◇
	TB	1900	75	2.80	3.66	2601	5,728	90				○
Extreme Duty – V Edge Power	TB	1850	73	2.50	3.27	2931	6,455	90				○
Maximum load with coupler (payload + bucket)							kg	5422	5082	4342	5677	
							lb	11,954	11,205	9,573	12,515	

### Maximum Material Density:

- 2100 kg/m<sup>3</sup> (3,500 lb/yd<sup>3</sup>)
- ⊙ 1800 kg/m<sup>3</sup> (3,000 lb/yd<sup>3</sup>)
- ⊖ 1500 kg/m<sup>3</sup> (2,500 lb/yd<sup>3</sup>)
- 1200 kg/m<sup>3</sup> (2,000 lb/yd<sup>3</sup>)
- ◇ 900 kg/m<sup>3</sup> (1,500 lb/yd<sup>3</sup>)

The above loads are in compliance with hydraulic excavator standard EN474-5:2006 + A3:2013, they do not exceed 87% of hydraulic lifting capacity or 75% of tipping capacity with front linkage fully extended at ground line with bucket curled.

Capacity based on ISO 7451:2007.

Bucket weight with General Duty tips.

Caterpillar recommends using appropriate work tools to maximize the value customers receive from our products. Use of work tools, including buckets, which are outside of Caterpillar's recommendations or specifications for weight, dimensions, flows, pressures, etc. may result in less-than-optimal performance, including but not limited to reductions in production, stability, reliability, and component durability. Improper use of a work tool resulting in sweeping, prying, twisting and/or catching of heavy loads will reduce the life of the boom and stick.

(continued on next page)

# 340 Hydraulic Excavator Specifications

## Bucket Specifications and Compatibility – Africa, Middle East and Eurasia (continued)

	Linkage	Width		Capacity		Weight		Fill	Long Wide Undercarriage			
		7.56 mt (16,700 lb) Counterweight							Reach HD			Mass
		mm	in	m <sup>3</sup>	yd <sup>3</sup>	kg	lb		%	R2.8 (9'2") HD	R3.2 (10'6") HD	R3.9 (12'10") HD
<b>With CW Quick Coupler</b>												
Heavy Duty	DB CW45	1650	65	2.12	2.77	1703	3,751	100	⊙	⊖	○	
Maximum load with coupler (payload + bucket)								kg	5645	5305	4565	6235
								lb	12,445	11,696	10,064	13,746

The above loads are in compliance with hydraulic excavator standard EN474-5:2006 + A3:2013, they do not exceed 87% of hydraulic lifting capacity or 75% of tipping capacity with front linkage fully extended at ground line with bucket curled.

Capacity based on ISO 7451:2007.

Bucket weight with General Duty tips.

### Maximum Material Density:

- ⊙ 1800 kg/m<sup>3</sup> (3,000 lb/yd<sup>3</sup>)
- ⊖ 1500 kg/m<sup>3</sup> (2,500 lb/yd<sup>3</sup>)
- 1200 kg/m<sup>3</sup> (2,000 lb/yd<sup>3</sup>)

Caterpillar recommends using appropriate work tools to maximize the value customers receive from our products. Use of work tools, including buckets, which are outside of Caterpillar's recommendations or specifications for weight, dimensions, flows, pressures, etc. may result in less-than-optimal performance, including but not limited to reductions in production, stability, reliability, and component durability. Improper use of a work tool resulting in sweeping, prying, twisting and/or catching of heavy loads will reduce the life of the boom and stick.

# 340 Hydraulic Excavator Specifications

## Bucket Specifications and Compatibility – Indonesia

	Linkage	Long Wide Undercarriage									
		7.56 mt (16,700 lb) Counterweight									
		Width		Capacity		Weight		Fill	Reach HD		Mass
	mm	in	m <sup>3</sup>	yd <sup>3</sup>	kg	lb	%	R3.2 (10'6") HD	R3.9 (12'10") HD	M2.55 (8'4")	
<b>Pin-On (No Quick Coupler)</b>											
Heavy Duty	DB	1500	61	1.88	2.46	1620	3,571	100	●	⊙	
	DB	1550	61	1.88	2.46	1632	3,594	100	●	⊙	
	DB	1650	67	2.12	2.77	1718	3,787	100	⊙	⊖	
	DB	1700	67	2.12	2.77	1726	3,801	100	⊙	⊖	
	DB	1800	73	2.36	3.08	1783	3,926	100	⊖	○	
	DB	1650	65	2.41	3.15	1800	3,964	100	⊖	○	
	DB	1700	67	2.20	2.88	1794	3,951	100	⊙	⊖	
	DB	1750	69	2.60	3.40	1932	4,255	100	⊖	○	
General Duty	TB	1800	71	2.60	3.40	2282	5,025	100			⊙
	TB	2050	81	3.00	3.92	2492	5,488	100			⊖
Heavy Duty	TB	1750	69	2.50	3.27	2420	5,329	100			⊙
	TB	1850	73	2.69	3.52	2639	5,811	100			⊖
	TB	1900	75	2.80	3.66	2548	5,612	100			⊖
Severe Duty	TB	1600	63	2.20	2.88	2390	5,268	90			●
	TB	1750	69	2.60	3.40	2430	5,352	90			⊙
	TB	1800	71	2.60	3.40	2618	5,766	90			⊙
Severe Duty – V Edge	TB	1650	66	2.41	3.15	2367	5,218	90			●
	TB	1900	75	2.80	3.66	2601	5,728	90			⊖
							kg	5780	5040	6730	
Maximum load with pin-on (payload + bucket)							lb	12,743	11,111	14,837	

The above loads are in compliance with hydraulic excavator standard EN474-5:2006 + A3:2013, they do not exceed 87% of hydraulic lifting capacity or 75% of tipping capacity with front linkage fully extended at ground line with bucket curled.

Capacity based on ISO 7451:2007.

Bucket weight with General Duty tips.

### Maximum Material Density:

- 2100 kg/m<sup>3</sup> (3,500 lb/yd<sup>3</sup>)
- ⊙ 1800 kg/m<sup>3</sup> (3,000 lb/yd<sup>3</sup>)
- ⊖ 1500 kg/m<sup>3</sup> (2,500 lb/yd<sup>3</sup>)
- 1200 kg/m<sup>3</sup> (2,000 lb/yd<sup>3</sup>)

Caterpillar recommends using appropriate work tools to maximize the value customers receive from our products. Use of work tools, including buckets, which are outside of Caterpillar's recommendations or specifications for weight, dimensions, flows, pressures, etc. may result in less-than-optimal performance, including but not limited to reductions in production, stability, reliability, and component durability. Improper use of a work tool resulting in sweeping, prying, twisting and/or catching of heavy loads will reduce the life of the boom and stick.

(continued on next page)

# 340 Hydraulic Excavator Specifications

## Bucket Specifications and Compatibility – Indonesia (continued)

	Linkage	Width		Capacity		Weight		Fill %	Long Wide Undercarriage 7.56 mt (16,700 lb) Counterweight		
		mm	in	m <sup>3</sup>	yd <sup>3</sup>	kg	lb		Reach HD		Mass M2.55 (8'4")
									R3.2 (10'6") HD	R3.9 (12'10") HD	
<b>With Cat Pin Grabber Coupler</b>											
Heavy Duty	DB	1500	61	1.88	2.46	1620	3,571	100	⊙	⊖	
	DB	1550	61	1.88	2.46	1632	3,594	100	⊙	⊖	
	DB	1650	67	2.12	2.77	1718	3,787	100	⊖	○	
	DB	1700	67	2.12	2.77	1726	3,801	100	⊖	○	
	DB	1800	73	2.36	3.08	1783	3,926	100	○	◇	
	DB	1650	65	2.41	3.15	1800	3,964	100	○	◇	
	DB	1700	67	2.20	2.88	1794	3,951	100	⊖	○	
	DB	1750	69	2.60	3.40	1932	4,255	100	○	◇	
General Duty	TB	1800	71	2.60	3.40	2282	5,025	100			○
	TB	2050	81	3.00	3.92	2492	5,488	100			◇
Heavy Duty	TB	1750	69	2.50	3.27	2420	5,329	100			○
	TB	1850	73	2.69	3.52	2639	5,811	100			◇
	TB	1900	75	2.80	3.66	2548	5,612	100			◇
Severe Duty	TB	1600	63	2.20	2.88	2390	5,268	90			⊖
	TB	1750	69	2.60	3.40	2430	5,352	90			○
	TB	1800	71	2.60	3.40	2618	5,766	90			○
Severe Duty – V Edge	TB	1650	66	2.41	3.15	2367	5,218	90			⊖
	TB	1900	75	2.80	3.66	2601	5,728	90			○
Maximum load with coupler (payload + bucket)								kg	5082	4342	5677
								lb	11,205	9,573	12,515

The above loads are in compliance with hydraulic excavator standard EN474-5:2006 + A3:2013, they do not exceed 87% of hydraulic lifting capacity or 75% of tipping capacity with front linkage fully extended at ground line with bucket curled.

Capacity based on ISO 7451:2007.

Bucket weight with General Duty tips.

### Maximum Material Density:

- ⊙ 1800 kg/m<sup>3</sup> (3,000 lb/yd<sup>3</sup>)
- ⊖ 1500 kg/m<sup>3</sup> (2,500 lb/yd<sup>3</sup>)
- 1200 kg/m<sup>3</sup> (2,000 lb/yd<sup>3</sup>)
- ◇ 900 kg/m<sup>3</sup> (1,500 lb/yd<sup>3</sup>)

Caterpillar recommends using appropriate work tools to maximize the value customers receive from our products. Use of work tools, including buckets, which are outside of Caterpillar's recommendations or specifications for weight, dimensions, flows, pressures, etc. may result in less-than-optimal performance, including but not limited to reductions in production, stability, reliability, and component durability. Improper use of a work tool resulting in sweeping, prying, twisting and/or catching of heavy loads will reduce the life of the boom and stick.

# 340 Hydraulic Excavator Specifications

## Attachments Offering Guide – Africa, Middle East

Not all Attachments are available in all regions. Consult your Cat dealer for configurations available in your region.

Match

\* Working range front only

No Match

### PIN-ON ATTACHMENTS

Undercarriage		Long Wide	
Counterweight		7.56 mt (16,700 lb)	
Boom Type		Reach HD	Mass
Stick Length		3.20 m HD (10'6")	2.55 m (8'4")
Hydraulic Hammers	H140 GC	✓	✓
	H140 GC S	✓	✓
	H140 S	✓	✓
	H160 GC	✓	✓
	H160 GC S	✓	✓
	H160 S	✓	✓
	H180 GC	✓*	✓
	H180 GC S	✓	✓
	H180 S	✓	✓
Multi-Processors	MP332 Concrete Cutter Jaw	✓	
	MP332 Demolition Jaw	✓	
	MP332 Pulverizer Jaw	✓	
	MP332 Shear Jaw	✓	
	MP332 Tank Shear Jaw	✓	
	MP332 Universal Jaw	✓	
	MP332 Concrete Cutter Jaw-Flat Top	✓	
	MP332 Demolition Jaw-Flat Top	✓	
	MP332 Pulverizer Jaw-Flat Top	✓	
	MP332 Shear Jaw-Flat Top	✓	
	MP332 Tank Shear Jaw-Flat Top	✓	
	MP332 Universal Jaw-Flat Top	✓	
	Demolition and Sorting Grapples	G332	✓
G345		✓	
G345 Flat Top		✓	
Mobile Scrap and Demolition Shears	S3035-Flat Top	✓	
Pulverizers	P232 Secondary Pulverizer	✓	✓
	P332 Primary Pulverizer	✓	
	P332 Primary Pulverizer-Flat Top	✓	
Compactors (Vibratory Plate)	CVPI10	✓	✓

(continued on next page)

# 340 Hydraulic Excavator Specifications

## Attachments Offering Guide – Africa, Middle East (continued)

Not all Attachments are available in all regions. Consult your Cat dealer for configurations available in your region.

No Match

1800 kg/m<sup>3</sup> (3,000 lb/yd<sup>3</sup>)

1200 kg/m<sup>3</sup> (2,000 lb/yd<sup>3</sup>)

### PIN-ON ATTACHMENTS (continued)

Undercarriage		Long Wide	
Counterweight		7.56 mt (16,700 lb)	
Boom Type		Reach HD	Mass
Stick Length		3.20 m HD (10'6")	2.55 m (8'4")
Orange Peel Grapples	GSH440-950	●	
	GSH440-1150	●	
	GSH440-1550	●	
	GSH455-1000	●	
	GSH455-1500	○	
	GSH455-2000	○	
	GSH555-1000	●	
	GSH555-1500	○	
	GSM50-1000	●	
	GSM50-1250	○	
	GSM50-1500	○	
	Clamshell Grapples	CTV20-1300	●
CTV20-1500		●	
CTV20-1700		●	
CTV20-1900		○	
CTV20-2300		○	
CTV20-2700			
CTV30-1700		○	
CTV30-1900		○	
CTV30-2300			

(continued on next page)

# 340 Hydraulic Excavator Specifications

## Attachments Offering Guide – Africa, Middle East (continued)

Not all Attachments are available in all regions. Consult your Cat dealer for configurations available in your region.

Match

\* Working range front only

No Match

### CAT PIN GRABBER COUPLER ATTACHMENTS

Undercarriage		Long Wide	
Counterweight		7.56 mt (16,700 lb)	
Boom Type		Reach HD	Mass
Stick Length		3.20 m HD (10'6")	2.55 m (8'4")
Hydraulic Hammers	H140 GC	✓	✓
	H140 GC S	✓	✓
	H140 S	✓	✓
	H160 GC	✓*	✓
	H160 GC S	✓	✓
	H160 S	✓	✓
	H180 GC		✓*
	H180 GC S	✓	✓
	H180 S	✓*	✓
Multi-Processors	MP332 Concrete Cutter Jaw	✓	
	MP332 Demolition Jaw	✓	
	MP332 Pulverizer Jaw	✓	
	MP332 Shear Jaw	✓	
	MP332 Tank Shear Jaw	✓	
	MP332 Universal Jaw	✓	
	MP332 Concrete Cutter Jaw-Flat Top	✓	
	MP332 Demolition Jaw-Flat Top	✓	
	MP332 Pulverizer Jaw-Flat Top	✓	
	MP332 Shear Jaw-Flat Top	✓	
	MP332 Tank Shear Jaw-Flat Top		
	MP332 Universal Jaw-Flat Top	✓	
	Demolition and Sorting Grapples	G332	✓
G345		✓	
G345 Flat Top		✓	
Mobile Scrap and Demolition Shears	S3035-Flat Top	✓	
Pulverizers	P232 Secondary Pulverizer	✓	✓
	P332 Primary Pulverizer	✓	
	P332 Primary Pulverizer-Flat Top	✓	
Compactors (Vibratory Plate)	CVPI10	✓	✓

(continued on next page)



# 340 Hydraulic Excavator Specifications

## Attachments Offering Guide – Africa, Middle East (continued)

Not all Attachments are available in all regions. Consult your Cat dealer for configurations available in your region.

Match

\* Working range front only

No Match

### CW-45s DEDICATED COUPLER ATTACHMENTS

Undercarriage		Long Wide	
Counterweight		7.56 mt (16,700 lb)	
Boom Type		Reach HD	Mass
Stick Length		3.20 m HD (10'6")	2.55 m (8'4")
Hydraulic Hammers	H140 GC	✓	✓
	H140 GC S	✓	✓
	H140 S	✓	✓
	H160 GC	✓*	✓
	H160 GC S	✓	✓
	H160 S	✓	✓
	H180 GC		✓
	H180 GC S	✓*	✓
	H180 S	✓*	✓
Multi-Processors	MP332 Concrete Cutter Jaw	✓	
	MP332 Demolition Jaw	✓	
	MP332 Pulverizer Jaw	✓	
	MP332 Shear Jaw	✓	
	MP332 Tank Shear Jaw	✓	
	MP332 Universal Jaw	✓	
	MP332 Concrete Cutter Jaw-Flat Top	✓	
	MP332 Demolition Jaw-Flat Top	✓	
	MP332 Pulverizer Jaw-Flat Top	✓	
	MP332 Shear Jaw-Flat Top	✓	
	MP332 Tank Shear Jaw-Flat Top	✓*	
	MP332 Universal Jaw-Flat Top	✓	
	Demolition and Sorting Grapples	G332	✓
G345		✓	
G345 Flat Top		✓	
Mobile Scrap and Demolition Shears	S3035-Flat Top	✓	
Pulverizers	P232 Secondary Pulverizer	✓	✓
	P332 Primary Pulverizer	✓	
	P332 Primary Pulverizer-Flat Top	✓	
Compactors (Vibratory Plate)	CVPI10	✓	✓

(continued on next page)

# 340 Hydraulic Excavator Specifications

## Attachments Offering Guide – Africa, Middle East (continued)

Not all Attachments are available in all regions. Consult your Cat dealer for configurations available in your region.

Match

\* Working range front only

No Match

### CW-45 DEDICATED COUPLER ATTACHMENTS

Undercarriage		Long Wide	
Counterweight		7.56 mt (16,700 lb)	
Boom Type		Reach HD	Mass
Stick Length		3.20 m HD (10'6")	2.55 m (8'4")
Hydraulic Hammers	H140 GC	✓	✓
	H140 GC S	✓	✓
	H140 S	✓	✓
	H160 GC	✓*	✓
	H160 GC S	✓	✓
	H160 S	✓	✓
	H180 GC		✓
	H180 GC S	✓	✓
	H180 S	✓*	✓
Multi-Processors	MP332 Concrete Cutter Jaw	✓	
	MP332 Demolition Jaw	✓	
	MP332 Pulverizer Jaw	✓	
	MP332 Shear Jaw	✓	
	MP332 Tank Shear Jaw	✓	
	MP332 Universal Jaw	✓	
	MP332 Concrete Cutter Jaw-Flat Top	✓	
	MP332 Demolition Jaw-Flat Top	✓	
	MP332 Pulverizer Jaw-Flat Top	✓	
	MP332 Shear Jaw-Flat Top	✓	
	MP332 Tank Shear Jaw-Flat Top	✓*	
	MP332 Universal Jaw-Flat Top	✓	
	Demolition and Sorting Grapples	G332	✓
G345		✓	
G345 Flat Top		✓	
Mobile Scrap and Demolition Shears	S3035-Flat Top	✓	
Pulverizers	P232 Secondary Pulverizer	✓	✓
	P332 Primary Pulverizer	✓	
	P332 Primary Pulverizer-Flat Top	✓	
Compactors (Vibratory Plate)	CVP110	✓	✓

(continued on next page)

# 340 Hydraulic Excavator Specifications

## Attachments Offering Guide – Africa, Middle East (continued)

Not all Attachments are available in all regions. Consult your Cat dealer for configurations available in your region.

Match
  No Match

<b>BOOM-MOUNT</b>			
<b>Undercarriage</b>		<b>Long</b>	<b>Long Wide</b>
<b>Counterweight</b>		<b>7.56 mt (16,700 lb)</b>	<b>7.56 mt (16,700 lb)</b>
<b>Boom Type</b>		<b>Mass</b>	<b>Reach HD</b>
Mobile Scrap and Demolition Shears	S2070	✓	✓
	S2090	✓	✓
	S3070-Flat Top		✓

# 340 Hydraulic Excavator Specifications

## Attachments Offering Guide – Eurasia

Not all Attachments are available in all regions. Consult your Cat dealer for configurations available in your region.

Match

\* Working range front only

No Match

### PIN-ON ATTACHMENTS

Undercarriage		Long Wide			
Counterweight		7.56 mt (16,700 lb)			
Boom Type		Reach HD			Mass
Stick Length		2.80 m HD (9'2")	3.20 m HD (10'6")	3.90 m HD (12'10")	2.55 m (8'4")
Hydraulic Hammers	H140 GC	✓	✓	✓	✓
	H140 GC S	✓	✓	✓	✓
	H140 S	✓	✓	✓	✓
	H160 GC	✓	✓	✓	✓
	H160 GC S	✓	✓	✓	✓
	H160 S	✓	✓	✓	✓
	H180 GC	✓	✓*		✓
	H180 GC S	✓	✓	✓	✓
	H180 S	✓	✓	✓	✓
Multi-Processors	MP332 Concrete Cutter Jaw	✓	✓	✓	
	MP332 Demolition Jaw	✓	✓	✓	
	MP332 Pulverizer Jaw	✓	✓	✓	
	MP332 Shear Jaw	✓	✓	✓	
	MP332 Tank Shear Jaw	✓	✓	✓	
	MP332 Universal Jaw	✓	✓	✓	
	MP332 Concrete Cutter Jaw-Flat Top	✓	✓	✓	
	MP332 Demolition Jaw-Flat Top	✓	✓	✓	
	MP332 Pulverizer Jaw-Flat Top	✓	✓	✓	
	MP332 Shear Jaw-Flat Top	✓	✓	✓	
	MP332 Tank Shear Jaw-Flat Top	✓	✓	✓*	
	MP332 Universal Jaw-Flat Top	✓	✓	✓	
Demolition and Sorting Grapples	G332	✓	✓	✓	
	G345	✓	✓	✓	
	G345 Flat Top	✓	✓	✓	
Mobile Scrap and Demolition Shears	S3035-Flat Top	✓	✓	✓	
Pulverizers	P232 Secondary Pulverizer	✓	✓	✓	✓
	P332 Primary Pulverizer	✓	✓	✓	
	P332 Primary Pulverizer-Flat Top	✓	✓	✓	
Compactors (Vibratory Plate)	CVP110	✓	✓	✓	✓

(continued on next page)

# 340 Hydraulic Excavator Specifications

## Attachments Offering Guide – Eurasia (continued)

Not all Attachments are available in all regions. Consult your Cat dealer for configurations available in your region.

Match
  No Match
  1800 kg/m<sup>3</sup> (3,000 lb/yd<sup>3</sup>)
  1200 kg/m<sup>3</sup> (2,000 lb/yd<sup>3</sup>)

### PIN-ON ATTACHMENTS (continued)

Undercarriage		Long Wide			
		7.56 mt (16,700 lb)			
Counterweight		Reach HD			Mass
		2.80 m HD (9'2")	3.20 m HD (10'6")	3.90 m HD (12'10")	
Boom Type					
Stick Length					
Orange Peel Grapples	GSH440-950	●	●	●	
	GSH440-1150	●	●	●	
	GSH440-1550	●	●	○	
	GSH455-1000	●	●	●	
	GSH455-1500	●	○	○	
	GSH455-2000	○	○		
	GSH555-1000	●	●	○	
	GSH555-1500	○	○		
	GSM50-1000	●	●	○	
	GSM50-1250	●	○		
	GSM50-1500	○	○		
	Clamshell Grapples	CTV20-1300	●	●	●
CTV20-1500		●	●	●	
CTV20-1700		●	●	○	
CTV20-1900		●	○	○	
CTV20-2300		○	○		
CTV20-2700		○			
CTV30-1700		●	○	○	
CTV30-1900		○	○		
CTV30-2300		○			
Rotary Cutters	RC30	✓	✓	✓	

(continued on next page)

# 340 Hydraulic Excavator Specifications

## Attachments Offering Guide – Eurasia (continued)

Not all Attachments are available in all regions. Consult your Cat dealer for configurations available in your region.

Match
  \* Working range front only
  No Match

### CAT PIN GRABBER COUPLER ATTACHMENTS

Undercarriage		Long Wide			
Counterweight		7.56 mt (16,700 lb)			
Boom Type		Reach HD			Mass
Stick Length		2.80 m HD (9'2")	3.20 m HD (10'6")	3.90 m HD (12'10")	2.55 m (8'4")
Hydraulic Hammers	H140 GC	✓	✓	✓	✓
	H140 GC S	✓	✓	✓	✓
	H140 S	✓	✓	✓	✓
	H160 GC	✓	✓*	✓	✓
	H160 GC S	✓	✓	✓	✓
	H160 S	✓	✓	✓	✓
	H180 GC	✓*			✓*
	H180 GC S	✓	✓		✓
	H180 S	✓	✓*		✓
Multi-Processors	MP332 Concrete Cutter Jaw	✓	✓	✓	
	MP332 Demolition Jaw	✓	✓	✓*	
	MP332 Pulverizer Jaw	✓	✓	✓*	
	MP332 Shear Jaw	✓	✓	✓	
	MP332 Tank Shear Jaw	✓	✓		
	MP332 Universal Jaw	✓	✓	✓*	
	MP332 Concrete Cutter Jaw-Flat Top	✓	✓		
	MP332 Demolition Jaw-Flat Top	✓	✓		
	MP332 Pulverizer Jaw-Flat Top	✓	✓		
	MP332 Shear Jaw-Flat Top	✓	✓		
	MP332 Tank Shear Jaw-Flat Top	✓*			
	MP332 Universal Jaw-Flat Top	✓	✓		
Demolition and Sorting Grapples	G332	✓	✓	✓	
	G345	✓	✓		
	G345 Flat Top	✓	✓		
Mobile Scrap and Demolition Shears	S3035-Flat Top	✓	✓	✓	
Pulverizers	P232 Secondary Pulverizer	✓	✓		✓
	P332 Primary Pulverizer	✓	✓	✓*	
	P332 Primary Pulverizer-Flat Top	✓	✓		
Compactors (Vibratory Plate)	CVP110	✓	✓	✓	✓
Rotary Cutters	RC30	✓	✓	✓	

(continued on next page)

# 340 Hydraulic Excavator Specifications

## Attachments Offering Guide – Eurasia (continued)

Not all Attachments are available in all regions. Consult your Cat dealer for configurations available in your region.

Match

\* Working range front only

No Match

### CW-45s DEDICATED COUPLER ATTACHMENTS

Undercarriage		Long Wide			
Counterweight		7.56 mt (16,700 lb)			
Boom Type		Reach HD			Mass
Stick Length		2.80 m HD (9'2")	3.20 m HD (10'6")	3.90 m HD (12'10")	2.55 m (8'4")
Hydraulic Hammers	H140 GC	✓	✓	✓*	✓
	H140 GC S	✓	✓	✓	✓
	H140 S	✓	✓	✓	✓
	H160 GC	✓	✓*	✓	✓
	H160 GC S	✓	✓	✓	✓
	H160 S	✓	✓	✓	✓
	H180 GC	✓*			✓
	H180 GC S	✓	✓*		✓
	H180 S	✓	✓*		✓
Multi-Processors	MP332 Concrete Cutter Jaw	✓	✓	✓	
	MP332 Demolition Jaw	✓	✓	✓	
	MP332 Pulverizer Jaw	✓	✓	✓	
	MP332 Shear Jaw	✓	✓	✓	
	MP332 Tank Shear Jaw	✓	✓		
	MP332 Universal Jaw	✓	✓	✓	
	MP332 Concrete Cutter Jaw-Flat Top	✓	✓	✓*	
	MP332 Demolition Jaw-Flat Top	✓	✓		
	MP332 Pulverizer Jaw-Flat Top	✓	✓		
	MP332 Shear Jaw-Flat Top	✓	✓	✓*	
	MP332 Tank Shear Jaw-Flat Top	✓	✓*		
	MP332 Universal Jaw-Flat Top	✓	✓		
Demolition and Sorting Grapples	G332	✓	✓	✓	
	G345	✓	✓	✓*	
	G345 Flat Top	✓	✓	✓*	
Mobile Scrap and Demolition Shears	S3035-Flat Top	✓	✓	✓	
Pulverizers	P232 Secondary Pulverizer	✓	✓		✓
	P332 Primary Pulverizer	✓	✓	✓	
	P332 Primary Pulverizer-Flat Top	✓	✓		
Compactors (Vibratory Plate)	CVP110	✓	✓	✓	✓
Rotary Cutters	RC30	✓	✓	✓	

(continued on next page)

# 340 Hydraulic Excavator Specifications

## Attachments Offering Guide – Eurasia (continued)

Not all Attachments are available in all regions. Consult your Cat dealer for configurations available in your region.

Match

\* Working range front only

No Match

### CW-45 DEDICATED COUPLER ATTACHMENTS

Undercarriage		Long Wide			
Counterweight		7.56 mt (16,700 lb)			
Boom Type		Reach HD			Mass
Stick Length		2.80 m HD (9'2")	3.20 m HD (10'6")	3.90 m HD (12'10")	2.55 m (8'4")
Hydraulic Hammers	H140 GC	✓	✓	✓*	✓
	H140 GC S	✓	✓	✓	✓
	H140 S	✓	✓	✓	✓
	H160 GC	✓	✓*	✓	✓
	H160 GC S	✓	✓	✓	✓
	H160 S	✓	✓	✓	✓
	H180 GC	✓*			✓
	H180 GC S	✓	✓		✓
	H180 S	✓	✓*		✓
Multi-Processors	MP332 Concrete Cutter Jaw	✓	✓	✓	
	MP332 Demolition Jaw	✓	✓	✓	
	MP332 Pulverizer Jaw	✓	✓	✓	
	MP332 Shear Jaw	✓	✓	✓	
	MP332 Tank Shear Jaw	✓	✓		
	MP332 Universal Jaw	✓	✓	✓	
	MP332 Concrete Cutter Jaw-Flat Top	✓	✓	✓*	
	MP332 Demolition Jaw-Flat Top	✓	✓		
	MP332 Pulverizer Jaw-Flat Top	✓	✓		
	MP332 Shear Jaw-Flat Top	✓	✓	✓*	
	MP332 Tank Shear Jaw-Flat Top	✓	✓*		
	MP332 Universal Jaw-Flat Top	✓	✓		
Demolition and Sorting Grapples	G332	✓	✓	✓	
	G345	✓	✓	✓*	
	G345 Flat Top	✓	✓		
Mobile Scrap and Demolition Shears	S3035-Flat Top	✓	✓	✓	
Pulverizers	P232 Secondary Pulverizer	✓	✓		✓
	P332 Primary Pulverizer	✓	✓	✓	
	P332 Primary Pulverizer-Flat Top	✓	✓		
Compactors (Vibratory Plate)	CVP110	✓	✓	✓	✓
Rotary Cutters	RC30	✓	✓	✓	

(continued on next page)



# 340 Hydraulic Excavator Specifications

## Attachments Offering Guide – Eurasia (continued)

Not all Attachments are available in all regions. Consult your Cat dealer for configurations available in your region.

Match
  No Match

### BOOM-MOUNT

Undercarriage		Long	Long Wide
Counterweight		7.56 mt (16,700 lb)	7.56 mt (16,700 lb)
Boom Type		Mass	Reach HD
Mobile Scrap and Demolition Shears	S2070	✓	✓
	S2090	✓	✓
	S3070-Flat Top		✓

# 340 Hydraulic Excavator Specifications

## Attachments Offering Guide – Indonesia

Not all Attachments are available in all regions. Consult your Cat dealer for configurations available in your region.

Match

\* Working range front only

No Match

### PIN-ON ATTACHMENTS

Undercarriage		Long Wide		
Counterweight		7.56 mt (16,700 lb)		
Boom Type		Reach HD		Mass
Stick Length		3.2 m (10'6") HD	3.9 m (12'10") HD	2.55 m (8'4")
Hydraulic Hammers	H140 GC	✓	✓	✓
	H140 GC S	✓	✓	✓
	H140 S	✓	✓	✓
	H160 GC	✓	✓	✓
	H160 GC S	✓	✓	✓
	H160 S	✓	✓	✓
	H180 GC	✓*		✓
	H180 GC S	✓	✓	✓
	H180 S	✓	✓	✓
Compactors (Vibratory Plate)	CVP110	✓	✓	✓
Rotary Cutters	RC30	✓	✓	

## Standard and Optional Equipment

Standard and optional equipment may vary. Consult your Cat dealer for details.

	Standard	Optional		Standard	Optional
<b>BOOMS, STICKS AND LINKAGES</b>			<b>ELECTRICAL SYSTEM</b>		
6.18 m (20'3") Mass boom		✓	Maintenance-free 1,000 CCA batteries (×2)	✓	
6.5 m (21'4") HD Reach boom		✓	Maintenance-free 1,000 CCA batteries (×4)		✓
2.55 m (8'4") Mass stick		✓	Centralized electrical disconnect switch	✓	
2.8 m (9'2") HD Reach stick		✓	LED exterior chassis and boom lights	✓	
3.2 m (10'6") HD Reach stick		✓	Premium surround working lights		✓
3.9 m (12'10") HD Reach stick		✓	<b>ENGINE</b>		
DB family bucket linkage with lifting eye		✓	115 Amp alternator	✓	
DB family bucket linkage without lifting eye		✓	Three selectable modes: Power, Smart, Eco	✓	
TB family bucket linkage with lifting eye		✓	Auto engine speed control	✓	
TB family bucket linkage without lifting eye		✓	52° C (126° F) high-ambient cooling	✓	
<b>CAT TECHNOLOGY</b>			Hydraulic reverse fan		✓
VisionLink®**	✓		-18° C (0° F) cold start capability	✓	
Remote Flash	✓		-32° C (-25° F) cold start capability		✓
Remote Troubleshoot	✓		Double element air filter with integrated pre-cleaner	✓	
Compatibility with radios and base stations from Trimble, Topcon, and Leica	✓		Dual stage four micron main filter	✓	
Capability to install 3D grade systems from Trimble, Topcon, and Leica	✓		10 micron primary filter with water separator	✓	
Cat Grade 2D		✓	Electric fuel priming pump	✓	
Cat Grade 2D with Attachment Ready Option (ARO)		✓	Secure start with PIN code	✓	
Cat Grade 3D single GNSS		✓	Remote disable	✓	
Cat Grade 3D dual GNSS		✓	<i>(continued on next page)</i>		
Cat Assist:		✓			
– Grade Assist					
– Boom Assist					
– Bucket Assist					
– Swing Assist					
– Lift Assist					
Cat Payload:		✓			
– Static weigh					
– Semiautomatic calibration					
– Payload/cycle information					
– USB reporting capability					
Laser catcher		✓			

\*Connect subscription only. Additional subscriptions are available. Contact your Cat dealer for availability.

# 340 Standard and Optional Equipment

## Standard and Optional Equipment (continued)

Standard and optional equipment may vary. Consult your Cat dealer for details.

	Standard	Optional		Standard	Optional
<b>HYDRAULIC SYSTEM</b>			<b>SERVICE AND MAINTENANCE</b>		
Boom and stick regeneration circuit	✓		Integrated vehicle health management system	✓	
Electronic main control valve	✓		Grouped engine oil and fuel filters	✓	
Auto dig boost		✓	Scheduled Oil Sampling (S-O-S <sup>SM</sup> ) ports	✓	
Auto heavy lift		✓	QuickEvac <sup>TM</sup> maintenance ready		✓
Auto hydraulic oil warmup	✓		<b>UNDERCARRIAGE AND STRUCTURES</b>		
Bio hydraulic oil capability	✓		Long wide undercarriage	✓	
Fine swing		✓	Towing eye on base frame	✓	
Reverse swing damping valve	✓		Full-length track guiding guards		✓
Auto swing parking brake	✓		Segmented two-piece track guiding guards		✓
High performance hydraulic return filter	✓		Swivel guard	✓	
Two speed travel	✓		HD bottom guard	✓	
Single one-way circuit		✓	HD travel motor guards	✓	
Single one-way circuit with hammer return filter		✓	Grease lubricated track	✓	
Medium-pressure auxiliary circuit		✓	7.56 mt (16,700 lb) counterweight	✓	
Combined two-way circuit with hammer return filter		✓	600 mm (24") double grouser track shoes		✓
Quick coupler circuit for Cat Pin Grabber		✓	600 mm (24") triple grouser track shoes		✓
Hydraulic efficiency monitoring		✓	600 mm (24") HD triple grouser track shoes		✓
<b>SAFETY AND SECURITY</b>			700 mm (28") triple grouser track shoes		✓
2D E-Fence:		✓	800 mm (31") triple grouser track shoes		✓
– E-ceiling					
– E-floor					
– E-swing					
– E-wall					
– E-cab avoidance					
Auto hammer stop	✓				
Caterpillar One Key security system	✓				
Lockable external tool/storage box	✓				
Lockable door, fuel, and hydraulic tank locks	✓				
Lockable fuel drain compartment	✓				
Lockable disconnect switch	✓				
Service platform with anti-skid plate and recessed bolts	✓				
Travel alarm		✓			
Swing alarm		✓			
Right Hand (RH) handrail and handhold	✓				
Signaling/warning horn	✓				
Ground-level secondary engine shutoff switch	✓				
Boom lowering check valve		✓			
Stick lowering check valve		✓			
Rearview camera	✓				
360° visibility		✓			
Operator Protective Guards		✓			
Inspection lighting		✓			

## Dealer Installed Kits and Attachments

Attachments may vary. Consult your Cat dealer for details.

---

<b>CAB</b> <ul style="list-style-type: none"><li>• Polycarbonate roof hatch</li><li>• Left Hand (LH)/RH electrical pedal for tool control</li><li>• Lower radial wiper</li></ul>	<b>ELECTRICAL</b> <ul style="list-style-type: none"><li>• Premium surround working lights</li></ul> <b>GUARDS</b> <ul style="list-style-type: none"><li>• Side rubber bumper guard</li><li>• Mesh guard full front</li><li>• Full protecting vandalism guard</li></ul>	<b>SAFETY AND SECURITY</b> <ul style="list-style-type: none"><li>• Bluetooth receiver kit</li><li>• Bluetooth key fob</li><li>• Operator Protective Guards</li><li>• Cat Detect – People Detection</li><li>• Cat Command – Remote control kit</li></ul>
--	--	---

# 340 Cab Options

	Essential	Deluxe
ROPS*	●	●
High-resolution 203 mm (8") LCD touchscreen monitor	●	●
High-resolution 254 mm (10") LCD touchscreen monitor	○	○
Auto bi-level air conditioner	●	●
Jog dial and shortcut keys for monitor control	X	●
Keyless push-to-start engine control	●	●
Height-adjustable console	X	●
Tilt-up left-side console	X	●
Air-suspension seat	●	X
Heated air-suspension seat	X	●
51 mm (2") seat belt	●	●
Monitor integrated Bluetooth radio with USB/Auxiliary ports	X	●
Bluetooth radio with USB/Auxiliary ports	●	X
12V DC outlets	X	●
24V DC outlet	●	X
Document storage	X	●
Overhead storage and rear storage with nets	X	●
Beverage holder	●	●
Cup holder	X	●
Openable two-piece front window	●	●
Rear window emergency exit	●	●
Radial wiper with washer	●	●
Openable polycarbonate skylight hatch	X	●
Openable steel hatch	●	X
LED dome light	●	●
Floor welcome light	X	●
Roof sunscreen	X	●
Roller front sunscreen	●	●
Roller rear sunscreen	○	○
Washable floor mat	●	●
Beacon ready	X	●
Cat Stick Steer	○	○
Auxiliary relay	○	○

● Standard

○ Optional

X Not available

\* Non-rops cabs available in Indonesia

The following information applies to the machine at the time of final manufacture as configured for sale in the regions covered in this document. The content of this declaration is valid as of the date issued; however, content related to machine features and specifications are subject to change without notice. For additional information, please see the machine's Operation and Maintenance Manual.

For more information on sustainability in action and our progress, please visit <https://www.caterpillar.com/en/company/sustainability>.

## Engine

- The Cat® C9.3B engine meets U.S. EPA Tier 3, EU Stage IIIA equivalent, and China Nonroad Stage III emission standards.
  - Cat engines are compatible with diesel fuel blended with the following lower-carbon intensity fuels\*\* up to:
    - ✓ 100% biodiesel FAME (fatty acid methyl ester)\*
    - ✓ 100% renewable diesel, HVO (hydrogenated vegetable oil) and GTL (gas-to-liquid) fuels
- Refer to guidelines for successful application. Please consult your Cat dealer or “Caterpillar Machine Fluids Recommendations” (SEBU6250) for details.
- \*For use of blends higher than 20% biodiesel, consult your Cat dealer.*
- \*\*Tailpipe greenhouse gas emissions from lower-carbon intensity fuels are essentially the same as traditional fuels.*

## Air Conditioning System

- The air conditioning system on this machine contains the fluorinated greenhouse gas refrigerant R134a (Global Warming Potential = 1430). The system contains 1.0 kg (2.2 lb) of refrigerant which has a CO<sub>2</sub> equivalent of 1.430 metric tonnes (1.576 tons).

## Paint

- Based on best available knowledge, the maximum allowable concentration, measured in parts per million (PPM), of the following heavy metals in paint are:
  - Barium < 0.01%
  - Cadmium < 0.01%
  - Chromium < 0.01%
  - Lead < 0.01%

## Sound Performance

ISO 6395:2008 (external) – 106 dB(A)

ISO 6396:2008 (inside cab) – 73 dB(A)

- Hearing protection may be needed when operating with an open operator station and cab (when not properly maintained or doors/windows open) for extended periods or in a noisy environment.

## Oils and Fluids

- Caterpillar factory fills with ethylene glycol coolants. Cat Diesel Engine Antifreeze/Coolant (DEAC) and Cat Extended Life Coolant (ELC) can be recycled. Consult your Cat dealer for more information.
- Cat Bio HYDO™ Advanced is an EU Ecolabel approved biodegradable hydraulic oil.
- Additional fluids are likely to be present, please consult the Operations and Maintenance Manual or the Application and Installation guide for complete fluid recommendations and maintenance intervals.

## Features and Technology

- The following features and technology may contribute to fuel savings and/or carbon reduction. Features may vary. Consult your Cat dealer for details.
  - Smart mode matches machine power to digging requirements automatically
  - Eco mode minimizes fuel consumption for light applications
  - One-touch low idle with automatic engine speed control
  - Available Cat technologies improve operator efficiency by up to 45%
  - Cut costs with extended maintenance intervals

For more complete information on Cat products, dealer services, and industry solutions, visit us on the web at [www.cat.com](http://www.cat.com)

© 2023 Caterpillar  
All rights reserved

Materials and specifications are subject to change without notice. Featured machines in photos may include additional equipment. See your Cat dealer for available options.

CAT, CATERPILLAR, LET'S DO THE WORK, their respective logos, "Caterpillar Corporate Yellow," the "Power Edge" and Cat "Modern Hex" trade dress as well as corporate and product identity used herein, are trademarks of Caterpillar and may not be used without permission. VisionLink is a trademark of Caterpillar Inc., registered in the United States and in other countries.

AEXQ3393-02 (12-2023)  
Replaces AEXQ3393-01  
Build Number: 08C  
(AME, Eurasia, Indonesia)

