



350

Hydraulic Excavator

Technical Specifications

Configurations and features may vary by region. Please consult your Cat® dealer for availability in your area.

Table of Contents

Specifications	2
Engine	2
Swing Mechanism	2
Weights	2
Track	2
Drive	2
Hydraulic System	2
Service Refill Capacities	2
Standards	2
Sound Performance	3
Air Conditioning System	3
Operating Weights and Ground Pressures	3
Major Component Weights	4
Dimensions	5
Working Ranges	9
Reach Boom Lift Capacities	11
Mass Boom Lift Capacities	23
Bucket Specifications and Compatibility:	
Africa, Middle East and Eurasia	26
Australia and New Zealand	27
South America	28
Southeast Asia	29
Typical Pass Match Guide	30
Attachments Offering Guide	
Africa, Middle East	31
Australia and New Zealand	35
Eurasia	36
South America	40
Southeast Asia	42
Standard and Optional Equipment	43
Dealer Installed Kits and Attachments	45
Cab Options	46
350 Environmental Declaration	47

350 Hydraulic Excavator Specifications

Engine

Engine Model	Cat® C9.3B	
Net Power		
ISO 9249	309 kW	414 hp
ISO 9249 (DIN)	420 PS	
Engine Power		
ISO 14396	310 kW	416 hp
ISO 14396 (DIN)	421 PS	
Bore	115 mm	5 in
Stroke	149 mm	6 in
Displacement	9.3 L	568 in ³

- Meets Brazil MAR-1 emission standards, equivalent to U.S. EPA Tier 3 and EU Stage IIIA.
- Recommended for use up to 4500 m (14,760 ft) altitude with engine power derate above 3000 m (9,840 ft).
- Advertised power is tested per the specified standard in effect at the time of manufacture.
- Net power is the power available at the flywheel when the engine is equipped with fan, air intake system, exhaust system, and alternator with engine speed at 1,800 rpm.
- Cat engines are compatible with diesel fuel blended with following lower-carbon intensity fuels** up to:
 - ✓ 100% biodiesel FAME (fatty acid methyl ester)*
 - ✓ 100% renewable diesel, HVO (hydrogenated vegetable oil) and GTL (gas-to-liquid) fuels

Refer to guidelines for successful application. Please consult your Cat dealer or “Caterpillar Machine Fluids Recommendations” (SEBU6250) for details.

*For use of blends higher than 20% biodiesel, consult your Cat dealer.

**Tailpipe greenhouse gas emissions from lower-carbon intensity fuels are essentially the same as traditional fuels.

Swing Mechanism

Swing Speed	7.94 rpm	
Maximum Swing Torque	189 kN·m	139,275 lbf·ft

Weights

Operating Weight	47 600 kg	104,900 lb
------------------	-----------	------------

- Mass boom, M3.0UB (9'10") stick, SD 3.2 m³ (4.2 yd³) bucket, and 600 mm (24") double grouser shoes, Long Undercarriage.

Track

Standard Track Shoes Width	600 mm	24 in
Optional Track Shoes Width	750 mm	30 in
Optional Track Shoes Width	900 mm	35 in
Number of Shoes (each side)	52	
Number of Track Rollers (each side)	9	
Number of Carrier Rollers (each side)	2	

Drive

Maximum Gradeability	35°/70%	
Maximum Travel Speed	4.5 km/h	2.8 mph
Maximum Drawbar Pull	352 kN	79,088 lbf

Hydraulic System

Main System – Maximum Flow – Implement	779 L/min (389 × 2 pumps)	206 gal/min (103 × 2 pumps)
Maximum Pressure – Equipment – Implement	35 000 kPa	5,076 psi
Maximum Pressure – Equipment – Lift Mode	38 000 kPa	5,511 psi
Maximum Pressure – Travel	35 000 kPa	5,076 psi
Maximum Pressure – Swing	25 700 kPa	3,727 psi
Boom Cylinder – Bore	160 mm	6 in
Boom Cylinder – Stroke	1575 mm	62 in
Stick Cylinder – Bore	190 mm	7 in
Stick Cylinder – Stroke	1758 mm	69 in
TB Bucket Cylinder – Bore	160 mm	6 in
TB Bucket Cylinder – Stroke	1356 mm	53 in
UB Bucket Cylinder – Bore	170 mm	7 in
UB Bucket Cylinder – Stroke	1396 mm	55 in

Service Refill Capacities

Fuel Tank Capacity	680 L	179.6 gal
Cooling System	48 L	12.7 gal
Engine Oil (with filter)	32 L	8.5 gal
Swing Drive	15 L	4.0 gal
Final Drive (each)	11 L	2.9 gal
Hydraulic System (including tank)	550 L	145.3 gal
Hydraulic Tank (including suction pipe)	217 L	57.3 gal

Standards

Brakes	ISO 10265:2008
Cab/Operator Protective Guards (OPG) – Optional	ISO 10262:1998 Level II
Cab/Rollover Protective Structure (ROPS) – Optional	ISO 12117-2:2008

350 Hydraulic Excavator Specifications

Sound Performance

ISO 6395:2008 (external) 107 dB(A)

ISO 6396:2008 (inside cab) 75 dB(A)

- Hearing protection may be needed when operating with an open operator station and cab (when not properly maintained or doors/windows open) for extended periods or in a noisy environment.

Air Conditioning System

The air conditioning system on this machine contains the fluorinated greenhouse gas refrigerant R134a (Global Warming Potential = 1430). The system contains 1.00 kg of refrigerant which has a CO₂ equivalent of 1.430 metric tonne.

Operating Weights and Ground Pressures

Base Machine Configurations	600 mm (24") Double Grouser Shoes		600 mm (24") Double Grouser Shoes		750 mm (30") Double Grouser Shoes		750 mm (30") Triple Grouser Shoes		900 mm (35") Triple Grouser Shoes	
	Weight kg (lb)	Ground Pressure kPa (psi)	Weight kg (lb)	Ground Pressure kPa (psi)	Weight kg (lb)	Ground Pressure kPa (psi)	Weight kg (lb)	Ground Pressure kPa (psi)	Weight kg (lb)	Ground Pressure kPa (psi)
Long Undercarriage										
Reach Boom + R3.9 m (12'10") TB Stick + 2.41 m ³ (3.15 yd ³) SD Bucket	46 700 (103,000)	80.9 (11.7)	47 300 (104,400)	81.9 (11.9)	47 500 (104,700)	65.9 (9.6)	47 400 (104,400)	65.7 (9.5)	48 100 (106,100)	55.7 (8.1)
Reach Boom + R3.35 m (11'0") TB Stick + 2.7 m ³ (3.6 yd ³) SD Bucket	46 700 (103,000)	80.9 (11.7)	47 300 (104,400)	81.9 (11.9)	47 500 (104,800)	65.9 (9.6)	47 400 (104,400)	65.7 (9.5)	48 100 (106,100)	55.7 (8.1)
Reach Boom + R2.9 m (9'6") TB Stick + 2.7 m ³ (3.6 yd ³) SD Bucket	46 700 (102,900)	80.8 (11.7)	47 300 (104,300)	81.9 (11.9)	47 500 (104,700)	65.9 (9.6)	47 300 (104,300)	65.7 (9.5)	48 100 (106,000)	55.6 (8.1)
Reach Boom + R3.35 m (11'0") TB HD Stick + 2.7 m ³ (3.6 yd ³) SD Bucket	46 900 (103,300)	81.1 (11.8)	47 500 (104,600)	82.2 (11.9)	47 600 (105,000)	66.1 (9.6)	47 500 (104,700)	65.9 (9.6)	48 300 (106,400)	55.8 (8.1)
Mass Boom + M3.0 m (9'10") UB Stick + 3.2 m ³ (4.2 yd ³) SD Bucket	47 600 (104,900)	82.4 (12.0)	48 200 (106,300)	83.4 (12.1)	48 400 (106,700)	67.1 (9.7)	48 200 (106,300)	66.9 (9.7)	49 000 (108,000)	56.7 (8.2)
Mass Boom + M2.5 m (8'2") UB Stick + 3.2 m ³ (4.2 yd ³) SD Bucket	47 400 (104,400)	82.0 (11.9)	48 000 (105,800)	83.1 (12.0)	48 200 (106,200)	66.8 (9.7)	48 000 (105,900)	66.6 (9.7)	48 800 (107,600)	56.4 (8.2)

All operating weights include a 90% fuel tank with 75 kg (165 lb) operator.

350 Hydraulic Excavator Specifications

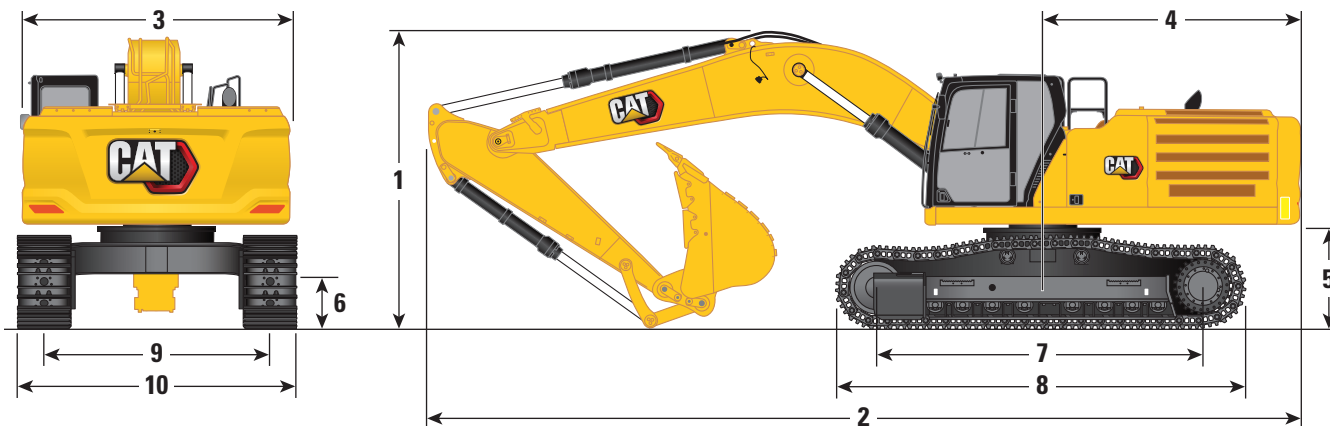
Major Component Weights

	kg	lb
Base Machine Weight (with upperframe, undercarriage, counterweight, boom cylinders – does not include boom, stick, bucket, stick cylinder, bucket cylinder, tracks, fuel, operator)		
With Counterweight, Swing Frame, Base Frame with Track Rollers and Carrier Rollers for Long Undercarriage	30 980	68,290
Track Shoes:		
600 mm (24") Width, 15.5 mm (0.6") Thick, Double Grouser Track Shoes	5270	11,610
600 mm (24") Width, 19.5 mm (0.8") Thick, Double Grouser Track Shoes	5880	12,960
750 mm (30") Width, 15.5 mm (0.6") Thick, Double Grouser Track Shoes	6060	13,360
750 mm (30") Width, 15.5 mm (0.6") Thick, Triple Grouser Track Shoes	5910	13,030
900 mm (35") Width, 15.5 mm (0.6") Thick, Triple Grouser Track Shoes	6680	14,720
Two Boom Cylinders	760	1,680
Weight of 90% Fuel Tank and 75 kg (165 lb) Operator	630	1,380
Counterweight	9000	19,840
Swing Frame	4140	9,120
Long Undercarriage:		
Base Frame with Track Rollers and Carrier Rollers	10 680	23,540
Booms (including lines, pins, stick cylinder):		
Reach Boom 6.9 m (22'8")	4540	10,000
Mass Boom 6.55 m (21'6")	4820	10,630
Sticks (including lines, pins, bucket cylinder, bucket linkage):		
Reach Stick R3.9TB (12'10")	2650	5,850
Reach Stick R3.35TB (11'0")	2480	5,470
Reach Stick R2.9TB (9'6")	2430	5,360
Reach Stick R3.35TB (11'0") HD	2600	5,740
Mass Stick M3.0UB (9'10")	2940	6,480
Mass Stick M2.5UB (8'2")	2720	5,990
Buckets (without linkage):		
2.41 m ³ (3.15 yd ³) SD	2670	5,880
2.7 m ³ (3.6 yd ³) SD	2850	6,270
3.2 m ³ (4.2 yd ³) SD	2970	6,540
Quick Couplers:		
CW Dedicated QC	760	1,660
Pin Grabber QC	950	2,090

350 Hydraulic Excavator Specifications

Dimensions

All dimensions are approximate and may vary depending on bucket selection.



Boom Options

Reach Boom
6.9 m (22'8")

Stick Options

R3.9TB (12'10")

Reach Stick
R3.35TB (11'0")

R2.9TB (9'6")

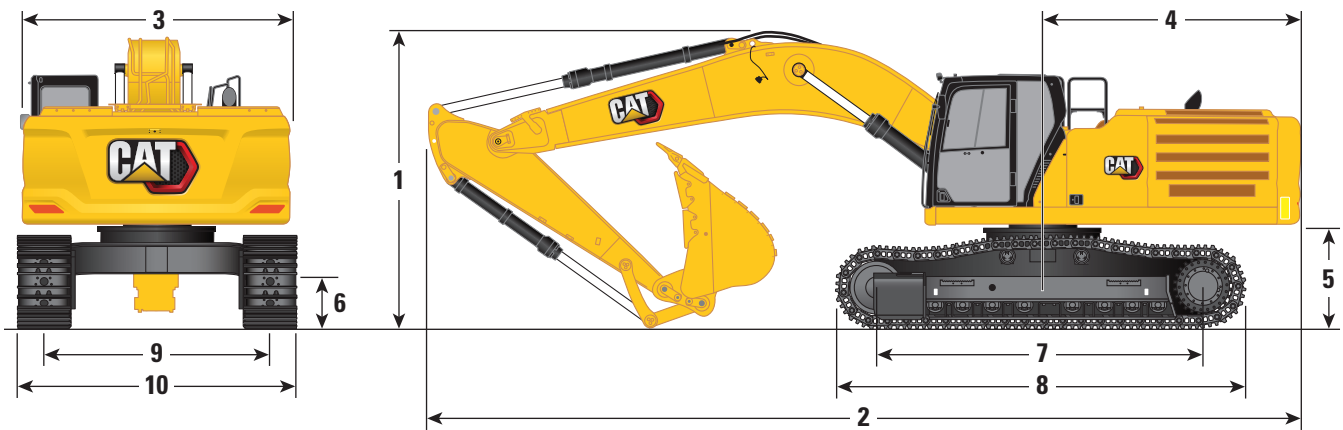
	R3.9TB (12'10")		Reach Stick R3.35TB (11'0")		R2.9TB (9'6")	
1 Machine Height:						
Cab Height	3260 mm	10'8"	3260 mm	10'8"	3260 mm	10'8"
OPG Height	3400 mm	11'2"	3400 mm	11'2"	3400 mm	11'2"
Guardrails/Handrails Height	3400 mm	11'2"	3400 mm	11'2"	3400 mm	11'2"
With Boom/Stick/Bucket Installed	3700 mm	12'2"	3590 mm	11'9"	3890 mm	12'9"
With Boom/Stick Installed	3700 mm	12'2"	3530 mm	11'7"	3440 mm	11'3"
With Boom Installed	3110 mm	10'2"	3110 mm	10'2"	3110 mm	10'2"
With Boom/Stick/Bucket Installed (with auxiliary lines)	3700 mm	12'2"	3590 mm	11'9"	3890 mm	12'9"
With Boom/Stick Installed (with auxiliary lines)	3700 mm	12'2"	3530 mm	11'7"	3440 mm	11'3"
With Boom Installed (with auxiliary lines)	3110 mm	10'2"	3110 mm	10'2"	3110 mm	10'2"
2 Machine Length:						
With Boom/Stick/Bucket Installed	11 950 mm	39'2"	11 880 mm	39'0"	11 890 mm	39'0"
With Boom/Stick Installed	11 950 mm	39'2"	11 860 mm	38'11"	11 830 mm	38'10"
With Boom Installed	10 630 mm	34'11"	10 630 mm	34'11"	10 630 mm	34'11"
With Boom/Stick/Bucket Installed (with auxiliary lines)	11 950 mm	39'2"	11 880 mm	39'0"	11 890 mm	39'0"
With Boom/Stick Installed (with auxiliary lines)	11 950 mm	39'2"	11 860 mm	38'11"	11 830 mm	38'10"
With Boom Installed (with auxiliary lines)	10 630 mm	34'11"	10 630 mm	34'11"	10 630 mm	34'11"
3 Upperframe Width without Walkways	3020 mm	9'11"	3020 mm	9'11"	3020 mm	9'11"
4 Tail Swing Radius	3760 mm	12'4"	3760 mm	12'4"	3760 mm	12'4"
5 Counterweight Clearance	1340 mm	4'5"	1340 mm	4'5"	1340 mm	4'5"
6 Ground Clearance	520 mm	1'8"	520 mm	1'8"	520 mm	1'8"
Bucket Type	SD		SD		SD	
Bucket Capacity	2.41 m ³	3.15 yd ³	2.70 m ³	3.60 yd ³	2.70 m ³	3.60 yd ³
Bucket Tip Radius	1920 mm	6'4"	1920 mm	6'4"	1920 mm	6'4"

(continued on next page)

350 Hydraulic Excavator Specifications

Dimensions *(continued)*

All dimensions are approximate and may vary depending on bucket selection.



Boom Options

Reach Boom
6.9 m (22'8")

Stick Options

R3.9TB (12'10")

Reach Stick
R3.35TB (11'0")

R2.9TB (9'6")

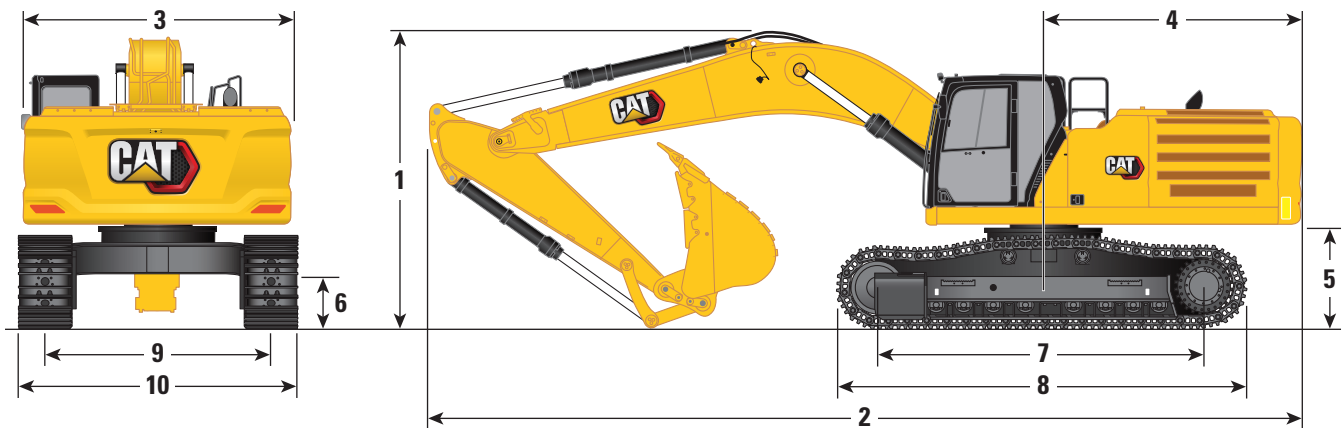
	R3.9TB (12'10")		Reach Stick R3.35TB (11'0")		R2.9TB (9'6")	
7 Track Length – Length to Center of Rollers (long undercarriage)	4360 mm	14'4"	4360 mm	14'4"	4360 mm	14'4"
8 Track Length (long undercarriage)	5400 mm	17'9"	5400 mm	17'9"	5400 mm	17'9"
9 Track Gauge – Extended	2740 mm	9'0"	2740 mm	9'0"	2740 mm	9'0"
10 Undercarriage Width (with steps) – Extended:						
600 mm (24") Shoes	3350 mm	11'0"	3350 mm	11'0"	3350 mm	11'0"
750 mm (30") Shoes	3500 mm	11'6"	3500 mm	11'6"	3500 mm	11'6"
900 mm (35") Shoes	3640 mm	11'11"	3640 mm	11'11"	3640 mm	11'11"
Bucket Type	SD		SD		SD	
Bucket Capacity	2.41 m ³	3.15 yd ³	2.70 m ³	3.60 yd ³	2.70 m ³	3.60 yd ³
Bucket Tip Radius	1920 mm	6'4"	1920 mm	6'4"	1920 mm	6'4"

(continued on next page)

350 Hydraulic Excavator Specifications

Dimensions (continued)

All dimensions are approximate and may vary depending on bucket selection.



Boom Options

Mass Boom
6.55 m (21'6")

Stick Options

Mass Stick
M3.0UB (9'10") **M2.5UB (8'2")**

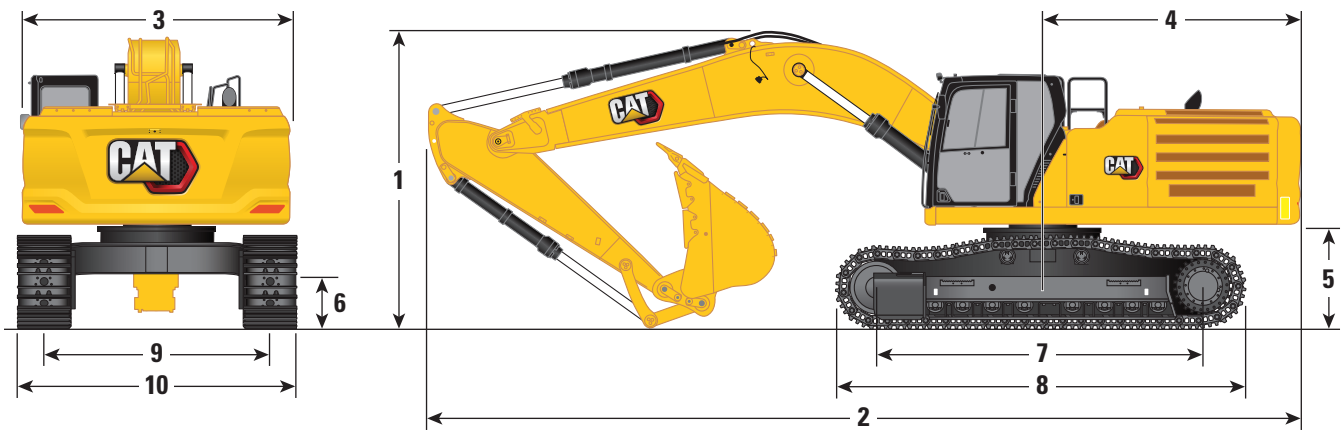
	M3.0UB (9'10")	M2.5UB (8'2")	M3.0UB (9'10")	M2.5UB (8'2")
1 Machine Height:				
Cab Height	3260 mm	10'8"	3260 mm	10'8"
OPG Height	3400 mm	11'2"	3400 mm	11'2"
Guardrails/Handrails Height	3400 mm	11'2"	3400 mm	11'2"
With Boom/Stick/Bucket Installed	4220 mm	13'10"	4340 mm	14'3"
With Boom/Stick Installed	3780 mm	12'5"	3530 mm	11'7"
With Boom Installed	3190 mm	10'6"	3190 mm	10'6"
With Boom/Stick/Bucket Installed (with auxiliary lines)	4220 mm	13'10"	4340 mm	14'3"
With Boom/Stick Installed (with auxiliary lines)	3780 mm	12'5"	3530 mm	11'7"
With Boom Installed (with auxiliary lines)	3190 mm	10'6"	3190 mm	10'6"
2 Machine Length:				
With Boom/Stick/Bucket Installed	11 630 mm	38'2"	11 830 mm	38'10"
With Boom/Stick Installed	11 510 mm	37'9"	11 580 mm	38'0"
With Boom Installed	10 270 mm	33'8"	10 270 mm	33'8"
With Boom/Stick/Bucket Installed (with auxiliary lines)	11 630 mm	38'2"	11 830 mm	38'10"
With Boom/Stick Installed (with auxiliary lines)	11 510 mm	37'9"	11 580 mm	38'0"
With Boom Installed (with auxiliary lines)	10 570 mm	34'8"	10 570 mm	34'8"
3 Upperframe Width without Walkways	3020 mm	9'11"	3020 mm	9'11"
4 Tail Swing Radius	3760 mm	12'4"	3760 mm	12'4"
5 Counterweight Clearance	1340 mm	4'5"	1340 mm	4'5"
6 Ground Clearance	520 mm	1'8"	520 mm	1'8"
Bucket Type	SD		SD	
Bucket Capacity	3.20 m ³	4.20 yd ³	3.20 m ³	4.20 yd ³
Bucket Tip Radius	2060 mm	6'9"	2060 mm	6'9"

(continued on next page)

350 Hydraulic Excavator Specifications

Dimensions *(continued)*

All dimensions are approximate and may vary depending on bucket selection.



Boom Options

Mass Boom
6.55 m (21'6")

Stick Options

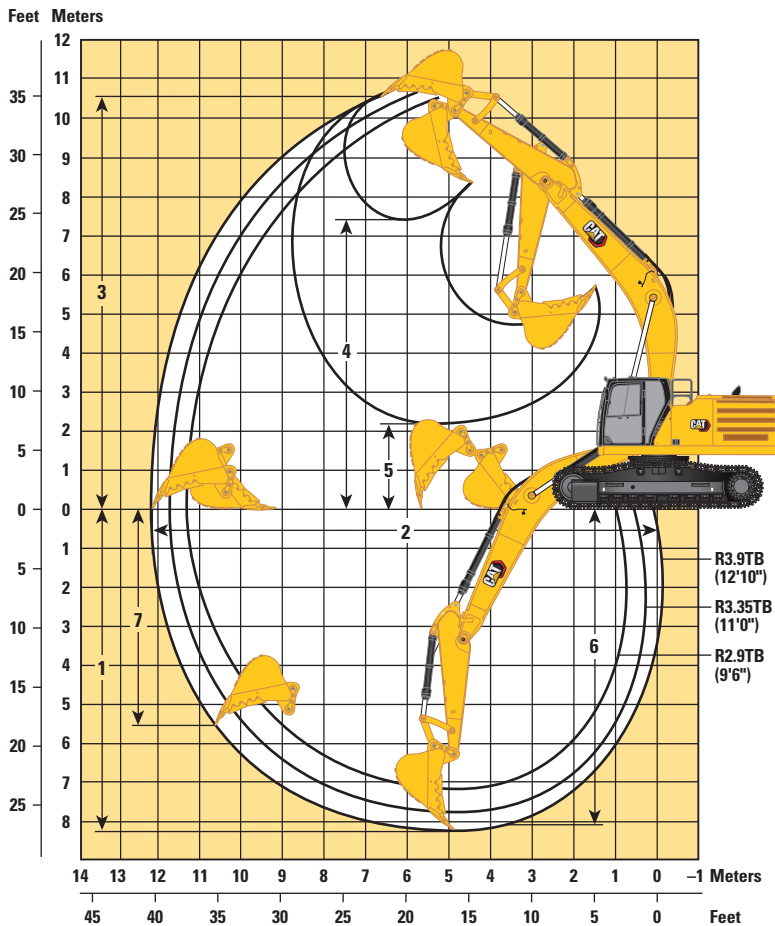
Mass Stick
M3.0UB (9'10") **M2.5UB (8'2")**

7 Track Length – Length to Center of Rollers (long undercarriage)	4360 mm	14'4"	4360 mm	14'4"
8 Track Length (long undercarriage)	5400 mm	17'9"	5400 mm	17'9"
9 Track Gauge – Extended	2740 mm	9'0"	2740 mm	9'0"
Track Width – Extended:				
600 mm (24") Shoes	3340 mm	10'11"	3340 mm	10'11"
750 mm (30") Shoes	3490 mm	11'5"	3490 mm	11'5"
900 mm (35") Shoes	3640 mm	11'11"	3640 mm	11'11"
10 Undercarriage Width (with steps) – Extended:				
600 mm (24") Shoes	3350 mm	11'0"	3350 mm	11'0"
750 mm (30") Shoes	3500 mm	11'6"	3500 mm	11'6"
900 mm (35") Shoes	3640 mm	11'11"	3640 mm	11'11"
Bucket Type	SD		SD	
Bucket Capacity	3.20 m ³	4.20 yd ³	3.20 m ³	4.20 yd ³
Bucket Tip Radius	2060 mm	6'9"	2060 mm	6'9"

350 Hydraulic Excavator Specifications

Working Ranges

All dimensions are approximate and may vary depending on bucket selection.



Boom Options

Reach Boom
6.9 m (22'8")

Stick Options

R3.9TB (12'10") R3.35TB (11'0") R2.9TB (9'6")

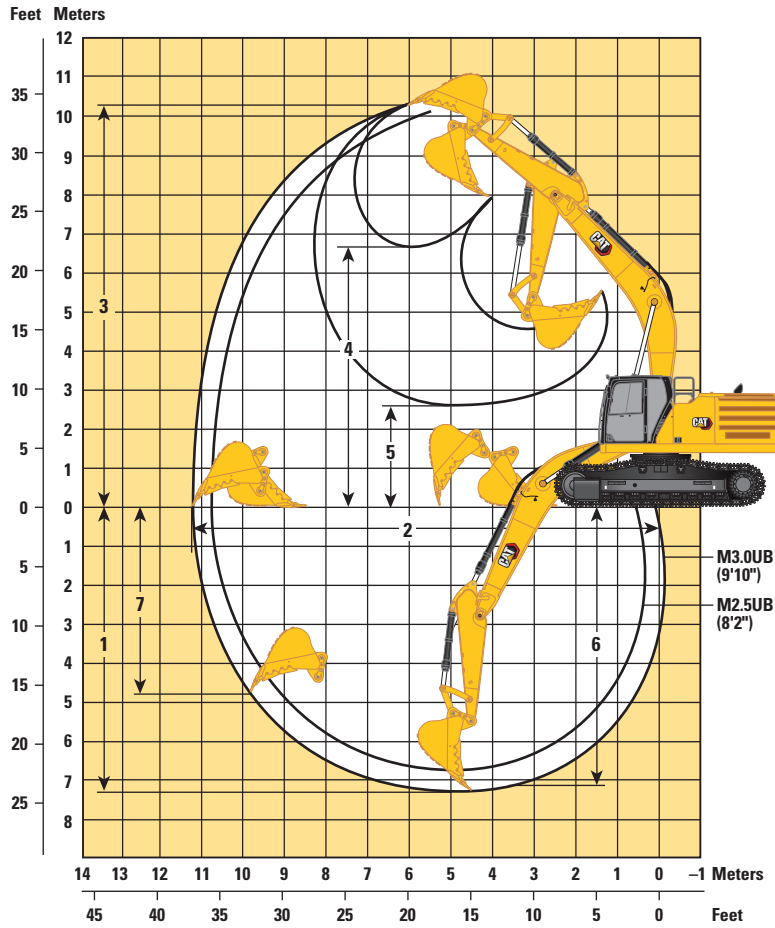
	R3.9TB (12'10")		R3.35TB (11'0")		R2.9TB (9'6")	
1 Maximum Digging Depth	8240 mm	27'0"	7690 mm	25'3"	7240 mm	23'9"
2 Maximum Reach at Ground Line	12 180 mm	40'0"	11 760 mm	38'7"	11 340 mm	37'2"
3 Maximum Cutting Height	10 600 mm	34'9"	10 700 mm	35'1"	10 530 mm	34'7"
4 Maximum Loading Height	7360 mm	24'2"	7380 mm	24'3"	7200 mm	23'7"
5 Minimum Loading Height	2160 mm	7'1"	2710 mm	8'11"	3160 mm	10'4"
6 Maximum Depth Cut for 2440 mm (8'0") Level Bottom	8110 mm	26'7"	7550 mm	24'9"	7080 mm	23'3"
7 Maximum Vertical Wall Digging Depth	5530 mm	18'2"	5630 mm	18'6"	5220 mm	17'2"
Bucket Digging Force (ISO)	266 kN	59,820 lbf	266 kN	59,820 lbf	266 kN	59,820 lbf
Stick Digging Force (ISO)	184 kN	41,330 lbf	200 kN	45,070 lbf	220 kN	49,530 lbf
Bucket Type	SD		SD		SD	
Bucket Capacity	2.41 m ³	3.15 yd ³	2.70 m ³	3.60 yd ³	2.70 m ³	3.60 yd ³
Bucket Tip Radius	1920 mm	6'4"	1920 mm	6'4"	1920 mm	6'4"

(continued on next page)

350 Hydraulic Excavator Specifications

Working Ranges (continued)

All dimensions are approximate and may vary depending on bucket selection.



Boom Options

Mass Boom
6.55 m (21'6")

Stick Options

Mass Stick

M3.0UB (9'10")

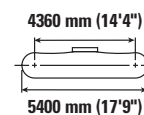
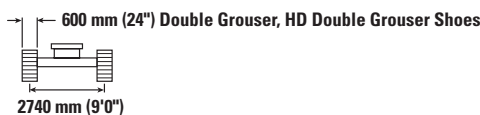
M2.5UB (8'2")

	M3.0UB (9'10")		M2.5UB (8'2")	
1 Maximum Digging Depth	7300 mm	23'11"	6800 mm	22'4"
2 Maximum Reach at Ground Line	11 270 mm	37'0"	10 800 mm	35'5"
3 Maximum Cutting Height	10 260 mm	33'8"	10 070 mm	33'0"
4 Maximum Loading Height	6730 mm	22'1"	6530 mm	21'5"
5 Minimum Loading Height	2570 mm	8'5"	3070 mm	10'1"
6 Maximum Depth Cut for 2440 mm (8'0") Level Bottom	7160 mm	23'6"	6640 mm	21'9"
7 Maximum Vertical Wall Digging Depth	4800 mm	15'9"	4360 mm	14'4"
Bucket Digging Force (ISO)	291 kN	65,480 lbf	291 kN	65,480 lbf
Stick Digging Force (ISO)	211 kN	47,510 lbf	240 kN	53,850 lbf
Bucket Type	SD		SD	
Bucket Capacity	3.20 m ³	4.20 yd ³	3.20 m ³	4.20 yd ³
Bucket Tip Radius	2060 mm	6'9"	2060 mm	6'9"

350 Hydraulic Excavator Specifications

Reach Boom Lift Capacities – Counterweight: 9.0 mt (19,842 lb) – without Bucket, Heavy Lift: On

Long Undercarriage



Reach Boom Length	Unit	1500 mm/5'0"		3000 mm/10'0"		4500 mm/15'0"		6000 mm/20'0"		7500 mm/25'0"		9000 mm/30'0"		mm ft/in				
		kg	lb	kg	lb	kg	lb	kg	lb	kg	lb	kg	lb	kg	lb	mm	ft/in	
9000 mm	kg														*7850	7880		
30'0"	lb														*17,450	25'4"		
7500 mm	kg														*7500	8980		
25'0"	lb														*16,550	29'2"		
6000 mm	kg									*10 750	10 550	*10 100	7800	*7450	6800	9730		
20'0"	lb									*23,400	22,650	*22,100	16,700	*16,400	15,050	31'9"		
4500 mm	kg							*13 700	*13 700	*11 750	10 150	*10 600	7600	*7600	6150	10 190		
15'0"	lb							*29,650	*29,650	*25,500	21,800	*23,050	16,300	*16,650	13,600	33'4"		
3000 mm	kg					*21 900	20 400	*15 950	13 350	*12 950	9650	*11 200	7350	*7950	5800	10 420		
10'0"	lb					*47,000	44,000	*34,400	28,850	*28,100	20,750	*24,350	15,750	*17,450	12,750	34'2"		
1500 mm	kg					*25 050	18 900	*17 800	12 600	*14 050	9200	11 400	7050	*8500	5650	10 430		
5'0"	lb					*54,000	40,750	*38,450	27,150	*30,400	19,800	24,550	15,200	*18,700	12,450	34'2"		
0 mm	kg					*23 800	18 250	*18 850	12 050	14 650	8850	11 200	6850	9300	5750	10 210		
0'0"	lb					*20,700	*20,700	*55,100	39,250	*40,750	26,000	31,550	19,050	24,050	14,750	20,500	12,600	33'5"
-1500 mm	kg					*15 400	*15 400	*25 400	18 050	*18 900	11 800	14 450	8650	11 050	6750	9900	6050	9760
-5'0"	lb					*34,650	*34,650	*55,100	38,800	*41,000	25,400	31,050	18,650	23,800	14,550	21,750	13,350	31'11"
-3000 mm	kg					*22 450	*22 450	*23 600	18 150	*18 000	11 800	*14 150	8650	*11 100	6800	*11 050	6750	9030
-10'0"	lb	*38,750	*38,750	*50,550	*50,550	*51,150	39,000	*38,950	25,350	*30,550	18,600			*24,300	14,900	29'6"		
-4500 mm	kg					*27 050	*27 050	*20 400	18 450	*15 800	11 950	*12 150	8800	*11 050	8150	7960		
-15'0"	lb					*58,400	*58,400	*44,000	39,700	*33,950	25,750	*25,800	19,000	*24,250	18,150	25'10"		
-6000 mm	kg					*14 950	*14 950	*11 250	*11 250					*10 300	*10 300	6350		
-20'0"	lb					*31,550	*31,550	*23,250	*23,250					*22,500	*22,500	20'4"		



ISO 10567:2007



* Indicates that the load is limited by hydraulic lifting capacity rather than tipping load. The above loads are in compliance with hydraulic excavator lift capacity standard ISO 10567:2007. They do not exceed 87% of hydraulic lifting capacity or 75% of tipping load. Weight of all lifting accessories must be deducted from the above lifting capacities. Lifting capacities are based on the machine standing on a firm, uniform supporting surface. The use of a work tool attachment point to handle/lift objects, could affect the machine lift performance.

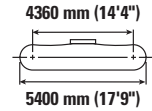
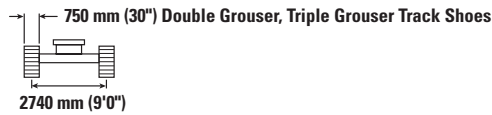
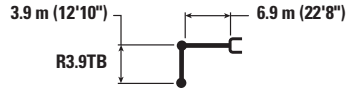
Lift capacity stays with ±5% for all available track shoes.

Always refer to the appropriate Operation and Maintenance Manual for specific product information.

350 Hydraulic Excavator Specifications

Reach Boom Lift Capacities – Counterweight: 9.0 mt (19,842 lb) – without Bucket, Heavy Lift: On

Long Undercarriage



Reach Boom Length	Unit	1500 mm/5'0"		3000 mm/10'0"		4500 mm/15'0"		6000 mm/20'0"		7500 mm/25'0"		9000 mm/30'0"		mm ft/in		
		kg	lb	kg	lb	kg	lb	kg	lb	kg	lb	kg	lb	kg	lb	mm
9000 mm	kg														*7850	7880
30'0"	lb														*17,450	17,450
7500 mm	kg														*7500	8980
25'0"	lb														*16,550	16,550
6000 mm	kg									*10 750	10 550	*10 100	7800	*7450	6800	9730
20'0"	lb									*23,400	22,750	*22,100	16,750	*16,400	15,100	31'9"
4500 mm	kg							*13 700	*13 700	*11 750	10 150	*10 600	7600	*7600	6150	10 190
15'0"	lb							*29,650	*29,650	*25,500	21,850	*23,050	16,350	*16,650	13,650	33'4"
3000 mm	kg					*21 900	20 450	*15 950	13 400	*12 950	9700	*11 200	7350	*7950	5800	10 420
10'0"	lb					*47,000	44,150	*34,400	28,950	*28,100	20,850	*24,350	15,800	*17,450	12,800	34'2"
1500 mm	kg					*25 050	19 000	*17 800	12 650	*14 050	9250	11 450	7100	*8500	5700	10 430
5'0"	lb					*54,000	40,900	*38,450	27,200	*30,400	19,900	*24,650	15,250	*18,700	12,500	34'2"
0 mm	kg					*23 800	18 300	*18 850	12 100	14 700	8900	11 250	6900	9350	5750	10 210
0'0"	lb					*52,700	40,700	*41,750	26,050	31,650	19,150	24,150	14,800	20,550	12,650	33'5"
-1500 mm	kg			*15 400	*15 400	*25 400	18 100	*18 900	11 850	14 500	8700	11 100	6800	9900	6100	9760
-5'0"	lb			*34,650	*34,650	*55,100	38,950	*41,000	25,500	31,200	18,700	23,900	14,600	21,850	13,400	31'11"
-3000 mm	kg			*22 450	*22 450	*23 600	18 200	*18 000	11 800	*14 150	8650	*11 100	6800	*11 050	6800	9030
-10'0"	lb	*38,750	*38,750	*50,550	*50,550	*51,150	39,100	*38,950	25,450	*30,550	18,650			*24,300	15,000	29'6"
-4500 mm	kg			*27 050	*27 050	*20 400	18 500	*15 800	12 000	*12 150	8800			*11 050	8200	7960
-15'0"	lb			*58,400	*58,400	*44,000	39,850	*33,950	25,850	*25,800	19,050			*24,250	18,250	25'10"
-6000 mm	kg					*14 950	*14 950	*11 250	*11 250					*10 300	*10 300	6350
-20'0"	lb					*31,550	*31,550	*23,250	*23,250					*22,500	*22,500	20'4"



ISO 10567:2007



* Indicates that the load is limited by hydraulic lifting capacity rather than tipping load. The above loads are in compliance with hydraulic excavator lift capacity standard ISO 10567:2007. They do not exceed 87% of hydraulic lifting capacity or 75% of tipping load. Weight of all lifting accessories must be deducted from the above lifting capacities. Lifting capacities are based on the machine standing on a firm, uniform supporting surface. The use of a work tool attachment point to handle/lift objects, could affect the machine lift performance.

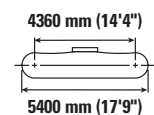
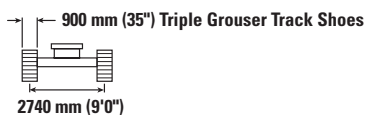
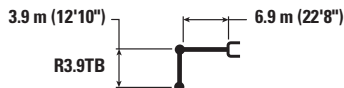
Lift capacity stays with ±5% for all available track shoes.

Always refer to the appropriate Operation and Maintenance Manual for specific product information.

350 Hydraulic Excavator Specifications

Reach Boom Lift Capacities – Counterweight: 9.0 mt (19,842 lb) – without Bucket, Heavy Lift: On

Long Undercarriage



Reach Boom	Unit	1500 mm/5'0"		3000 mm/10'0"		4500 mm/15'0"		6000 mm/20'0"		7500 mm/25'0"		9000 mm/30'0"		mm ft/in		
		kg	lb	kg	lb	kg	lb	kg	lb	kg	lb	kg	lb	kg	lb	mm
9000 mm 30'0"	kg														*7850	7880
	lb														*17,450	17,450
7500 mm 25'0"	kg														*7500	8980
	lb														*16,550	16,550
6000 mm 20'0"	kg									*10 750	10 700	*10 100	7900	*7450	6900	9730
	lb									*23,400	23,000	*22,100	16,950	*16,400	15,300	31'9"
4500 mm 15'0"	kg							*13 700	*13 700	*11 750	10 250	*10 600	7700	*7600	6250	10 190
	lb							*29,650	*29,650	*25,500	22,100	*23,050	16,550	*16,650	13,800	33'4"
3000 mm 10'0"	kg					*21 900	20 700	*15 950	13 550	*12 950	9800	*11 200	7450	*7950	5900	10 420
	lb					*47,000	44,650	*34,400	29,250	*28,100	21,100	*24,350	16,000	*17,450	13,000	34'2"
1500 mm 5'0"	kg					*25 050	19 200	*17 800	12 800	*14 050	9350	11 600	7200	*8500	5750	10 430
	lb					*54,000	41,400	*38,450	27,550	*30,400	20,100	24,950	15,450	*18,700	12,650	34'2"
0 mm 0'0"	kg					*23 800	18 550	*18 850	12 250	*14 750	9000	11 400	7000	*9450	5850	10 210
	lb					*52,700	41,450	*41,750	26,400	*32,550	19,400	24,500	15,000	*20,800	12,850	33'5"
-1500 mm -5'0"	kg			*15 400	*15 400	*25 400	18 350	*18 900	12 000	14 700	8800	11 250	6850	10 050	6150	9760
	lb			*34,650	*34,650	*55,100	39,450	*41,000	25,850	31,600	18,950	24,250	14,800	22,150	13,600	31'11"
-3000 mm -10'0"	kg			*22 450	*22 450	*23 600	18 450	*18 000	11 950	*14 150	8750	*11 100	6900	*11 050	6850	9030
	lb	*38,750	*38,750	*50,550	*50,550	*51,150	39,600	*38,950	25,800	*30,550	18,900			*24,300	15,200	29'6"
-4500 mm -15'0"	kg			*27 050	*27 050	*20 400	18 750	*15 800	12 150	*12 150	8950			*11 050	8300	7960
	lb			*58,400	*58,400	*44,000	40,300	*33,950	26,200	*25,800	19,300			*24,250	18,450	25'10"
-6000 mm -20'0"	kg					*14 950	*14 950	*11 250	*11 250					*10 300	*10 300	6350
	lb					*31,550	*31,550	*23,250	*23,250					*22,500	*22,500	20'4"



ISO 10567:2007



* Indicates that the load is limited by hydraulic lifting capacity rather than tipping load. The above loads are in compliance with hydraulic excavator lift capacity standard ISO 10567:2007. They do not exceed 87% of hydraulic lifting capacity or 75% of tipping load. Weight of all lifting accessories must be deducted from the above lifting capacities. Lifting capacities are based on the machine standing on a firm, uniform supporting surface. The use of a work tool attachment point to handle/lift objects, could affect the machine lift performance.

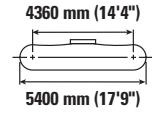
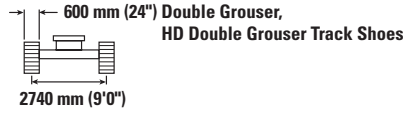
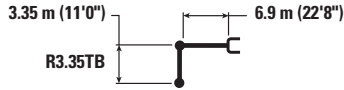
Lift capacity stays with ±5% for all available track shoes.

Always refer to the appropriate Operation and Maintenance Manual for specific product information.

350 Hydraulic Excavator Specifications

Reach Boom Lift Capacities – Counterweight: 9.0 mt (19,842 lb) – without Bucket, Heavy Lift: On

Long Undercarriage



		3000 mm/10'0"		4500 mm/15'0"		6000 mm/20'0"		7500 mm/25'0"		9000 mm/30'0"		mm ft/in		
9000 mm 30'0"	kg lb											*9000 *19,950	*9000 *19,950	7320 23'6"
7500 mm 25'0"	kg lb							*11 000 *24,100	10 650 22,800			*8450 *18,700	*8450 *18,700	8500 27'7"
6000 mm 20'0"	kg lb							*11 500 *25,050	10 400 22,350	*10 800 *20,400	7700 16,500	*18,300 *18,300	*16,150 *16,150	30'3"
4500 mm 15'0"	kg lb			*19 200 *41,200	*19 200 *41,200	*14 750 *31,850	14 050 30,300	*12 450 *27,050	10 000 21,600	*11 150 *24,300	7550 16,200	*8450 *18,550	6550 14,500	9770 31'11"
3000 mm 10'0"	kg lb			*23 600 *50,700	19 900 42,950	*16 850 *36,350	13 200 28,450	*13 550 *29,400	9600 20,650	11 650 25,100	7300 15,700	*8800 *19,300	6200 13,600	10 010 32'9"
1500 mm 5'0"	kg lb			*18 550 *44,350	*18 550 *40,350	*18 450 *39,900	12 500 26,950	*14 500 *31,450	9200 19,800	11 400 24,550	7100 15,250	*9400 *20,650	6050 13,300	10 020 32'10"
0 mm 0'0"	kg lb			*21 000 *48,750	18 350 39,400	*19 150 *41,500	12 100 26,050	14 700 31,600	8900 19,200	11 250 24,200	6900 14,900	9950 21,950	6150 13,550	9790 32'1"
-1500 mm -5'0"	kg lb	*15 000 *33,900	*15 000 *33,900	*24 900 *54,000	18 300 39,300	*18 900 *40,900	11 950 25,700	14 550 31,300	8750 18,900	11 200 24,100	6850 14,800	10 650 23,500	6550 14,450	9320 30'6"
-3000 mm -10'0"	kg lb	*23 950 *54,150	*23 950 *54,150	*22 600 *48,950	18 450 39,650	*17 550 *37,900	12 000 25,800	*13 800 *29,650	8800 18,950			*11 350 *25,000	7400 16,400	8560 27'11"
-4500 mm -15'0"	kg lb	*23 700 *51,100	*23 700 *51,100	*18 750 *40,400	*18 750 *40,400	*14 700 *31,450	12 250 26,400					*11 050 *24,200	9200 20,550	7410 24'0"



ISO 10567:2007



* Indicates that the load is limited by hydraulic lifting capacity rather than tipping load. The above loads are in compliance with hydraulic excavator lift capacity standard ISO 10567:2007. They do not exceed 87% of hydraulic lifting capacity or 75% of tipping load. Weight of all lifting accessories must be deducted from the above lifting capacities. Lifting capacities are based on the machine standing on a firm, uniform supporting surface. The use of a work tool attachment point to handle/lift objects, could affect the machine lift performance.

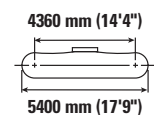
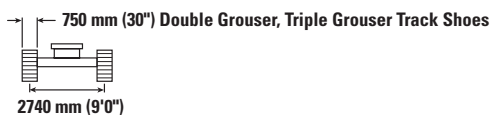
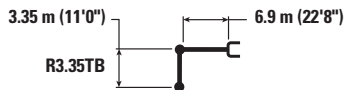
Lift capacity stays with ±5% for all available track shoes.

Always refer to the appropriate Operation and Maintenance Manual for specific product information.

350 Hydraulic Excavator Specifications

Reach Boom Lift Capacities – Counterweight: 9.0 mt (19,842 lb) – without Bucket, Heavy Lift: On

Long Undercarriage



Reach	Unit	3000 mm/10'0"		4500 mm/15'0"		6000 mm/20'0"		7500 mm/25'0"		9000 mm/30'0"		mm ft/in		
		kg lb	kg lb	kg lb	kg lb	kg lb	kg lb	kg lb	kg lb	kg lb	kg lb	kg lb	kg lb	
9000 mm 30'0"	kg lb											*9000 *19,950	*9000 *19,950	7320 23'6"
7500 mm 25'0"	kg lb							*11 000 *24,100	10 650 22,850			*8450 *18,700	*8450 *18,700	8500 27'7"
6000 mm 20'0"	kg lb							*11 500 *25,050	10 450 22,450	*10 800 *20,400	7700 16,550	*18,300 *18,300	16,200 16,200	30'3"
4500 mm 15'0"	kg lb			*19 200 *41,200	*19 200 *41,200	*14 750 *31,850	14 100 30,350	*12 450 *27,050	10 050 21,650	*11 150 *24,300	7550 16,250	*8450 *18,550	6600 14,550	9770 31'11"
3000 mm 10'0"	kg lb			*23 600 *50,700	19 950 43,100	*16 850 *36,350	13 250 28,550	*13 550 *29,400	9600 20,700	*11 700 25,150	7350 15,750	*8800 *19,300	6200 13,650	10 010 32'9"
1500 mm 5'0"	kg lb			*18 550 *44,350	*18 550 40,500	*18 450 *39,900	12 550 27,050	*14 500 *31,450	9200 19,850	11 450 24,650	7100 15,300	*9400 *20,650	6050 13,350	10 020 32'10"
0 mm 0'0"	kg lb			*21 000 *48,750	18 400 39,550	*19 150 *41,500	12 150 26,150	14 750 31,750	8950 19,250	11 300 24,300	6950 14,950	10 000 22,000	6200 13,600	9790 32'1"
-1500 mm -5'0"	kg lb	*15 000 *33,900	*15 000 *33,900	*24 900 *54,000	18 350 39,450	*18 900 *40,900	12 000 25,800	14 600 31,400	8800 18,950	11 200 24,150	6900 14,850	10 700 23,600	6600 14,500	9320 30'6"
-3000 mm -10'0"	kg lb	*23 950 *54,150	*23 950 *54,150	*22 600 *48,950	18 500 39,800	*17 550 *37,900	12 000 25,900	*13 800 *29,650	8850 19,050			*11 350 *25,000	7450 16,500	8560 27'11"
-4500 mm -15'0"	kg lb	*23 700 *51,100	*23 700 *51,100	*18 750 *40,400	*18 750 *40,400	*14 700 *31,450	12 250 26,450					*11 050 *24,200	9250 20,650	7410 24'0"



ISO 10567:2007



* Indicates that the load is limited by hydraulic lifting capacity rather than tipping load. The above loads are in compliance with hydraulic excavator lift capacity standard ISO 10567:2007. They do not exceed 87% of hydraulic lifting capacity or 75% of tipping load. Weight of all lifting accessories must be deducted from the above lifting capacities. Lifting capacities are based on the machine standing on a firm, uniform supporting surface. The use of a work tool attachment point to handle/lift objects, could affect the machine lift performance.

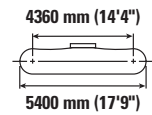
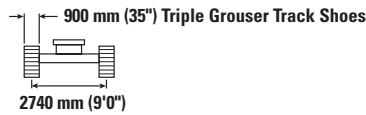
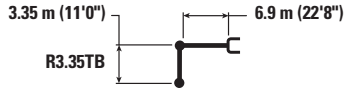
Lift capacity stays with ±5% for all available track shoes.

Always refer to the appropriate Operation and Maintenance Manual for specific product information.

350 Hydraulic Excavator Specifications

Reach Boom Lift Capacities – Counterweight: 9.0 mt (19,842 lb) – without Bucket, Heavy Lift: On

Long Undercarriage



Reach	Unit	3000 mm/10'0"		4500 mm/15'0"		6000 mm/20'0"		7500 mm/25'0"		9000 mm/30'0"		mm ft/in		
		kg lb	kg lb	kg lb	kg lb	kg lb	kg lb	kg lb	kg lb	kg lb	kg lb	kg lb	kg lb	
9000 mm 30'0"	kg lb											*9000 *19,950	*9000 *19,950	7320 23'6"
7500 mm 25'0"	kg lb							*11 000 *24,100	10 750 23,100			*8450 *18,700	*8450 *18,700	8500 27'7"
6000 mm 20'0"	kg lb							*11 500 *25,050	10 550 22,700	*10 800 *20,400	7800 16,750	*18,300 *18,300	16,400 16,400	30'3"
4500 mm 15'0"	kg lb			*19 200 *41,200	*19 200 *41,200	*14 750 *31,850	14 250 30,700	*12 450 *27,050	10 150 21,900	*11 150 *24,300	7650 16,450	*8450 *18,550	6650 14,750	9770 31'11"
3000 mm 10'0"	kg lb			*23 600 *50,700	20 200 43,600	*16 850 *36,350	13 400 28,900	*13 550 *29,400	9750 20,950	*11 700 *25,400	7400 15,950	*8800 *19,300	6300 13,850	10 010 32'9"
1500 mm 5'0"	kg lb			*18 550 *44,350	*18 550 40,950	*18 450 *39,900	12 700 27,400	*14 500 *31,450	9350 20,100	11 600 25,000	7200 15,500	*9400 *20,650	6150 13,550	10 020 32'10"
0 mm 0'0"	kg lb			*21 000 *48,750	18 600 40,050	*19 150 *41,500	12 300 26,500	14 950 32,150	9050 19,500	11 450 24,600	7050 15,150	10 150 22,300	6250 13,800	9790 32'1"
-1500 mm -5'0"	kg lb	*15 000 *33,900	*15 000 *33,900	*24 900 *54,000	18 600 39,900	*18 900 *40,900	12 150 26,100	14 800 31,800	8900 19,200	11 350 24,500	7000 15,050	10 850 23,900	6700 14,700	9320 30'6"
-3000 mm -10'0"	kg lb	*23 950 *54,150	*23 950 *54,150	*22 600 *48,950	18 750 40,300	*17 550 *37,900	12 150 26,200	*13 800 *29,650	8950 19,300			*11 350 *25,000	7550 16,700	8560 27'11"
-4500 mm -15'0"	kg lb	*23 700 *51,100	*23 700 *51,100	*18 750 *40,400	*18 750 *40,400	*14 700 *31,450	12 400 26,800					*11 050 *24,200	9350 20,900	7410 24'0"



ISO 10567:2007



* Indicates that the load is limited by hydraulic lifting capacity rather than tipping load. The above loads are in compliance with hydraulic excavator lift capacity standard ISO 10567:2007. They do not exceed 87% of hydraulic lifting capacity or 75% of tipping load. Weight of all lifting accessories must be deducted from the above lifting capacities. Lifting capacities are based on the machine standing on a firm, uniform supporting surface. The use of a work tool attachment point to handle/lift objects, could affect the machine lift performance.

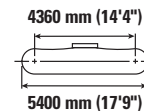
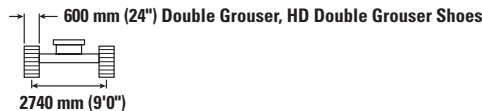
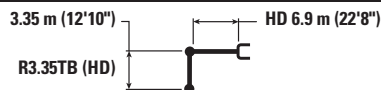
Lift capacity stays with ±5% for all available track shoes.

Always refer to the appropriate Operation and Maintenance Manual for specific product information.

350 Hydraulic Excavator Specifications

Reach Boom Lift Capacities – Counterweight: 9.0 mt (19,842 lb) – without Bucket, Heavy Lift: On

Long Undercarriage



		3000 mm/10'0"		4500 mm/15'0"		6000 mm/20'0"		7500 mm/25'0"		9000 mm/30'0"		mm ft/in		
9000 mm 30'0"	kg lb											*8950 *19,850	*8950 *19,850	7320 23'6"
7500 mm 25'0"	kg lb							*10 850 *23,800	10 550 22,600			*8400 *18,600	*8400 *18,600	8500 27'7"
6000 mm 20'0"	kg lb							*10 600 *24,700	7600 22,150	*10 600 *20,300	7600 16,200	*18,200 *15,900	*18,200 *15,900	7150 15,900 30'3"
4500 mm 15'0"	kg lb			*19 000 *40,700	*19 000 *40,700	*14 550 *31,450	13 900 30,000	*12 300 *26,650	9900 21,300	*10 950 *23,900	7400 15,900	*8400 *18,400	6450 14,200	9770 31'11"
3000 mm 10'0"	kg lb			*23 300 *50,000	19 650 42,400	*16 600 *35,850	13 000 28,100	*11 350 *28,950	9450 20,300	*11 500 *24,800	7150 15,400	*8750 *19,200	6050 13,300	10 010 32'9"
1500 mm 5'0"	kg lb			*18 500 *44,300	18 400 39,650	*18 200 *39,300	12 300 26,500	*14 300 *30,950	9000 19,400	11 300 *24,250	6950 14,900	*9350 *20,550	5900 13,000	10 020 32'10"
0 mm 0'0"	kg lb			*20 950 *48,650	18 000 38,700	*18 850 *40,850	11 850 25,550	14 550 31,250	8700 18,750	11 100 *23,900	6750 14,550	9850 *21,650	6000 13,250	9790 32'1"
-1500 mm -5'0"	kg lb	*14 950 *33,800	*14 950 *33,800	*24 500 *53,200	17 950 38,550	*18 600 *40,250	11 700 25,150	14 350 30,900	8550 18,450	11 050 *23,750	6700 14,450	10 500 *23,200	6400 14,150	9320 30'6"
-3000 mm -10'0"	kg lb	*23 950 *54,050	*23 950 *54,050	*22 250 *48,150	18 150 39,000	*17 250 *37,250	11 750 25,300	*13 550 *29,100	8600 18,550			*11 150 *24,550	7250 16,050	8560 27'11"
-4500 mm -15'0"	kg lb	*23 250 *50,100	*23 250 *50,100	*18 450 *39,650	*18 450 *39,650	*14 450 *30,850	12 000 25,900					*10 800 *23,700	9050 20,200	7410 24'0"



ISO 10567:2007



* Indicates that the load is limited by hydraulic lifting capacity rather than tipping load. The above loads are in compliance with hydraulic excavator lift capacity standard ISO 10567:2007. They do not exceed 87% of hydraulic lifting capacity or 75% of tipping load. Weight of all lifting accessories must be deducted from the above lifting capacities. Lifting capacities are based on the machine standing on a firm, uniform supporting surface. The use of a work tool attachment point to handle/lift objects, could affect the machine lift performance.

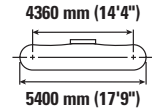
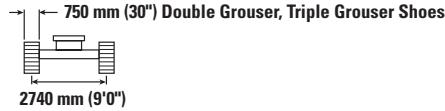
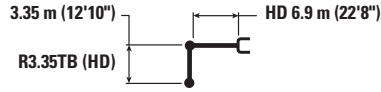
Lift capacity stays with ±5% for all available track shoes.

Always refer to the appropriate Operation and Maintenance Manual for specific product information.

350 Hydraulic Excavator Specifications

Reach Boom Lift Capacities – Counterweight: 9.0 mt (19,842 lb) – without Bucket, Heavy Lift: On

Long Undercarriage



Reach (mm/in)	Unit	3000 mm/10'0"		4500 mm/15'0"		6000 mm/20'0"		7500 mm/25'0"		9000 mm/30'0"		mm ft/in			
		kg lb	kg lb	kg lb	kg lb	kg lb	kg lb	kg lb	kg lb	kg lb	kg lb	kg lb	kg lb		
9000 mm 30'0"	kg lb											*8950 *19,850	*8950 *19,850	7320 23'6"	
7500 mm 25'0"	kg lb							*10 850 *23,800	10 550 22,650			*8400 *18,600	*8400 *18,600	8500 27'7"	
6000 mm 20'0"	kg lb							*24,700	22,200	*10 600 *20,300	7600 16,250	*18,200 *15,950	15,950 35,000	7200 15,950	9280 30'3"
4500 mm 15'0"	kg lb			*19 000 *40,700	*19 000 *40,700	*14 550 *31,450	13 950 30,100	*12 300 *26,650	9950 21,350	*10 950 *23,900	7450 15,950	*8400 *18,400	6450 14,250	9770 31'11"	
3000 mm 10'0"	kg lb			*23 300 *50,000	19 700 42,550	*16 600 *35,850	13 050 28,200	*11 350 *28,950	10 350 20,400	9450 24,900	*11 500 *24,900	7200 15,450	*8750 *19,200	6050 13,350	10 010 32'9"
1500 mm 5'0"	kg lb			*18 500 *44,300	18 450 39,800	*18 200 *39,300	12 350 26,600	*14 300 *30,950	9050 19,500	11 350 24,350	6950 14,950	*9350 *20,550	5950 13,050	10 020 32'10"	
0 mm 0'0"	kg lb			*20 950 *48,650	18 050 38,800	*18 850 *40,850	11 900 25,650	14 600 31,350	8750 18,850	11 150 23,950	6800 14,600	9850 21,700	6050 13,300	9790 32'1"	
-1500 mm -5'0"	kg lb	*14 950 *33,800	*14 950 *33,800	*24 500 *53,200	18 000 38,700	*18 600 *40,250	11 750 25,250	14 400 31,000	8600 18,550	11 050 23,850	6750 14,500	10 550 23,300	6450 14,200	9320 30'6"	
-3000 mm -10'0"	kg lb	*23 950 *54,050	*23 950 *54,050	*22 250 *48,150	18 200 39,100	*17 250 *37,250	11 800 25,350	*13 550 *29,100	8650 18,650			*11 150 *24,550	7300 16,150	8560 27'11"	
-4500 mm -15'0"	kg lb	*23 250 *50,100	*23 250 *50,100	*18 450 *39,650	*18 450 *39,650	*14 450 *30,850	12 050 26,000					*10 800 *23,700	9100 20,250	7410 24'0"	



ISO 10567:2007



* Indicates that the load is limited by hydraulic lifting capacity rather than tipping load. The above loads are in compliance with hydraulic excavator lift capacity standard ISO 10567:2007. They do not exceed 87% of hydraulic lifting capacity or 75% of tipping load. Weight of all lifting accessories must be deducted from the above lifting capacities. Lifting capacities are based on the machine standing on a firm, uniform supporting surface. The use of a work tool attachment point to handle/lift objects, could affect the machine lift performance.

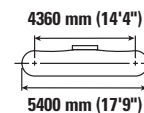
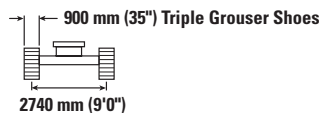
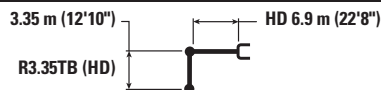
Lift capacity stays with ±5% for all available track shoes.

Always refer to the appropriate Operation and Maintenance Manual for specific product information.

350 Hydraulic Excavator Specifications

Reach Boom Lift Capacities – Counterweight: 9.0 mt (19,842 lb) – without Bucket, Heavy Lift: On

Long Undercarriage



		3000 mm/10'0"		4500 mm/15'0"		6000 mm/20'0"		7500 mm/25'0"		9000 mm/30'0"		mm ft/in		
9000 mm 30'0"	kg lb											*8950 *19,850	*8950 *19,850	7320 23'6"
7500 mm 25'0"	kg lb						*10 850 *23,800	10 700 22,900				*8400 *18,600	*8400 *18,600	8500 27'7"
6000 mm 20'0"	kg lb						*24,700	22,450	*10 600 *20,300	7700 16,450		*18,200	*16,150	7300 30'3"
4500 mm 15'0"	kg lb			*19 000 *40,700	*19 000 *40,700	*14 550 *31,450	14 100 30,400	*12 300 *26,650	10 050 21,600	*10 950 *23,900	7500 16,150	*8400 *18,400	6550 14,450	9770 31'11"
3000 mm 10'0"	kg lb			*23 300 *50,000	19 900 43,000	*16 600 *35,850	13 200 28,500	*13 350 *28,950	9600 20,650	*11 500 *25,000	7300 15,650	*8750 *19,200	6150 13,550	10 010 32'9"
1500 mm 5'0"	kg lb			*18 500 *44,300	*18 500 40,300	*18 200 *39,300	12 500 26,950	*14 300 *30,950	9150 19,750	11 500 24,700	7050 15,150	*9350 *20,550	6000 13,200	10 020 32'10"
0 mm 0'0"	kg lb			*20 950 *48,650	18 300 39,300	*18 850 *40,850	12 050 25,950	14 750 31,800	8850 19,100	11 300 24,300	6900 14,800	10 000 22,000	6100 13,450	9790 32'1"
-1500 mm -5'0"	kg lb	*14 950 *33,800	*14 950 *33,800	*24 500 *53,200	18 250 39,200	*18 600 *40,250	11 900 25,600	14 600 31,450	8700 18,800	11 200 24,150	6800 14,700	10 700 23,600	6500 14,350	9320 30'6"
-3000 mm -10'0"	kg lb	*23 950 *54,050	*23 950 *54,050	*22 250 *48,150	18 450 39,600	*17 250 *37,250	11 950 25,700	*13 550 *29,100	8750 18,850			*11 150 *24,550	7400 16,350	8560 27'11"
-4500 mm -15'0"	kg lb	*23 250 *50,100	*23 250 *50,100	*18 450 *39,650	*18 450 *39,650	*14 450 *30,850	12 200 26,350					*10 800 *23,700	9200 20,550	7410 24'0"



ISO 10567:2007



* Indicates that the load is limited by hydraulic lifting capacity rather than tipping load. The above loads are in compliance with hydraulic excavator lift capacity standard ISO 10567:2007. They do not exceed 87% of hydraulic lifting capacity or 75% of tipping load. Weight of all lifting accessories must be deducted from the above lifting capacities. Lifting capacities are based on the machine standing on a firm, uniform supporting surface. The use of a work tool attachment point to handle/lift objects, could affect the machine lift performance.

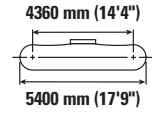
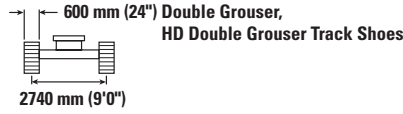
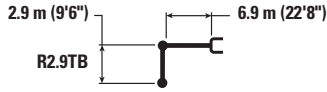
Lift capacity stays with ±5% for all available track shoes.

Always refer to the appropriate Operation and Maintenance Manual for specific product information.

350 Hydraulic Excavator Specifications

Reach Boom Lift Capacities – Counterweight: 9.0 mt (19,842 lb) – without Bucket, Heavy Lift: On

Long Undercarriage



		3000 mm/10'0"		4500 mm/15'0"		6000 mm/20'0"		7500 mm/25'0"		9000 mm/30'0"		mm ft/in		
9000 mm 30'0"	kg lb											*10 700 *23,850	*10 700 *23,850	6740 21'7"
7500 mm 25'0"	kg lb							*11 700 *25,700	10 450 22,400			*10 000 *22,150	9350 20,900	8010 25'11"
6000 mm 20'0"	kg lb					*13 600 *29,500	*13 600 *29,500	*12 050 *26,300	10 250 22,100			*9850 *21,650	7850 17,400	8840 28'10"
4500 mm 15'0"	kg lb			*20 650 *44,200	*20 650 *44,200	*15 500 *33,400	13 800 29,800	*12 950 *28,100	9900 21,350	*11 550 *25,200	7450 16,000	*10 000 *21,950	7000 15,450	9350 30'7"
3000 mm 10'0"	kg lb			*18 850 *49,150	*18 850 *41,850	*17 450 *37,650	13 000 28,050	*13 950 *30,250	9500 20,450	11 600 24,950	7250 15,600	*10 450 *22,900	6550 14,450	9600 31'5"
1500 mm 5'0"	kg lb			*13 650 *33,550	*13 650 *33,550	*18 800 *40,700	12 400 26,700	*14 750 *32,000	9100 19,650	11 400 24,500	7050 15,200	10 350 22,800	6450 14,150	9610 31'6"
0 mm 0'0"	kg lb			*19 550 *45,650	18 300 39,350	*19 200 *41,600	12 050 25,950	14 700 31,600	8900 19,150	11 250 24,250	6950 14,950	10 650 23,400	6550 14,450	9370 30'8"
-1500 mm -5'0"	kg lb	*15 200 *34,450	*15 200 *34,450	*24 050 *52,250	18 350 39,450	*18 600 *40,300	11 950 25,750	14 600 31,350	8800 18,950			11 450 25,300	7050 15,550	8870 29'0"
-3000 mm -10'0"	kg lb	*26 200 *57,200	*26 200 *57,200	*21 400 *46,400	18 600 40,000	*16 900 *36,500	12 050 26,000	*13 200 *28,250	8900 19,200			*11 750 *25,850	8100 17,950	8070 26'4"
-4500 mm -15'0"	kg lb			*17 050 *36,600	*17 050 *36,600	*13 400 *28,450	12 400 26,750					*11 100 *24,300	10 450 23,350	6840 22'2"



ISO 10567:2007



* Indicates that the load is limited by hydraulic lifting capacity rather than tipping load. The above loads are in compliance with hydraulic excavator lift capacity standard ISO 10567:2007. They do not exceed 87% of hydraulic lifting capacity or 75% of tipping load. Weight of all lifting accessories must be deducted from the above lifting capacities. Lifting capacities are based on the machine standing on a firm, uniform supporting surface. The use of a work tool attachment point to handle/lift objects, could affect the machine lift performance.

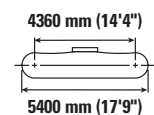
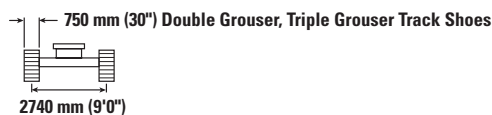
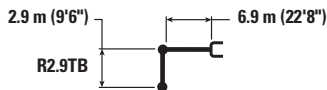
Lift capacity stays with ±5% for all available track shoes.

Always refer to the appropriate Operation and Maintenance Manual for specific product information.

350 Hydraulic Excavator Specifications

Reach Boom Lift Capacities – Counterweight: 9.0 mt (19,842 lb) – without Bucket, Heavy Lift: On

Long Undercarriage



Reach	Unit	3000 mm/10'0"		4500 mm/15'0"		6000 mm/20'0"		7500 mm/25'0"		9000 mm/30'0"		mm ft/in		
		kg lb	kg lb	kg lb	kg lb	kg lb	kg lb	kg lb	kg lb	kg lb	kg lb	kg lb	kg lb	mm ft/in
9000 mm 30'0"	kg lb											*10 700 *23,850	*10 700 *23,850	6740 21'7"
7500 mm 25'0"	kg lb							*11 700 *25,700	10 500 22,500			*10 000 *22,150	9350 21,000	8010 25'11"
6000 mm 20'0"	kg lb					*13 600 *29,500	*13 600 *29,500	*12 050 *26,300	10 300 22,150			*9850 *21,650	7850 17,450	8840 28'10"
4500 mm 15'0"	kg lb			*20 650 *44,200	*20 650 *44,200	*15 500 *33,400	13 850 29,900	*12 950 *28,100	9950 21,400	*11 550 *25,200	7500 16,050	*10 000 *21,950	7000 15,500	9350 30'7"
3000 mm 10'0"	kg lb			*18 850 *49,150	*18 850 *41,950	*17 450 *37,650	13 050 28,150	*13 950 *30,250	9500 20,500	11 650 25,050	7300 15,650	*10 450 *22,900	6600 14,500	9600 31'5"
1500 mm 5'0"	kg lb			*13 650 *33,550	*13 650 *33,550	*18 800 *40,700	12 450 26,800	*14 750 *32,000	9150 19,750	11 450 24,600	7100 15,250	10 400 22,850	6450 14,200	9610 31'6"
0 mm 0'0"	kg lb			*19 550 *45,650	18 350 39,500	*19 200 *41,600	12 100 26,050	14 750 31,700	8900 19,200	11 300 24,300	6950 15,000	10 650 23,500	6600 14,500	9370 30'8"
-1500 mm -5'0"	kg lb	*15 200 *34,450	*15 200 *34,450	*24 050 *52,250	18 450 39,600	*18 600 *40,300	12 000 25,850	14 650 31,500	8850 19,050			11 500 25,400	7100 15,600	8870 29'0"
-3000 mm -10'0"	kg lb	*26 200 *57,200	*26 200 *57,200	*21 400 *46,400	18 650 40,100	*16 900 *36,500	12 100 26,050	*13 200 *28,250	8900 19,250			*11 750 *25,850	8150 18,050	8070 26'4"
-4500 mm -15'0"	kg lb			*17 050 *36,600	*17 050 *36,600	*13 400 *28,450	12 450 26,850					*11 100 *24,300	10 450 23,400	6840 22'2"



ISO 10567:2007



* Indicates that the load is limited by hydraulic lifting capacity rather than tipping load. The above loads are in compliance with hydraulic excavator lift capacity standard ISO 10567:2007. They do not exceed 87% of hydraulic lifting capacity or 75% of tipping load. Weight of all lifting accessories must be deducted from the above lifting capacities. Lifting capacities are based on the machine standing on a firm, uniform supporting surface. The use of a work tool attachment point to handle/lift objects, could affect the machine lift performance.

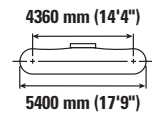
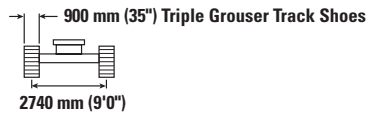
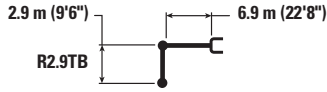
Lift capacity stays with ±5% for all available track shoes.

Always refer to the appropriate Operation and Maintenance Manual for specific product information.

350 Hydraulic Excavator Specifications

Reach Boom Lift Capacities – Counterweight: 9.0 mt (19,842 lb) – without Bucket, Heavy Lift: On

Long Undercarriage



Reach	Unit	3000 mm/10'0"		4500 mm/15'0"		6000 mm/20'0"		7500 mm/25'0"		9000 mm/30'0"		mm		ft/in
		kg	lb	kg	lb	kg	lb	kg	lb	kg	lb	kg	lb	
9000 mm	kg											*10 700	*10 700	6740
30'0"	lb											*23,850	*23,850	21'7"
7500 mm	kg							*11 700	10 600			*10 000	9450	8010
25'0"	lb							*25,700	22,750			*22,150	21,250	25'11"
6000 mm	kg					*13 600	*13 600	*12 050	10 400			*9850	7950	8840
20'0"	lb					*29,500	*29,500	*26,300	22,400			*21,650	17,650	28'10"
4500 mm	kg			*20 650	*20 650	*15 500	14 000	*12 950	10 050	*11 550	7550	*10 000	7100	9350
15'0"	lb			*44,200	*44,200	*33,400	30,250	*28,100	21,650	*25,200	16,250	*21,950	15,700	30'7"
3000 mm	kg			*18 850	*18 850	*17 450	13 200	*13 950	9650	11 800	7350	*10 450	6700	9600
10'0"	lb			*49,150	42,450	*37,650	28,500	*30,250	20,750	25,350	15,850	*22,900	14,700	31'5"
1500 mm	kg			*13 650	*13 650	*18 800	12 600	*14 750	9250	11 600	7200	10 550	6550	9610
5'0"	lb			*33,550	*33,550	*40,700	27,100	*32,000	20,000	24,900	15,450	23,150	14,400	31'6"
0 mm	kg			*19 550	18 600	*19 200	12 250	14 900	9050	11 450	7050	10 800	6700	9370
0'0"	lb			*45,650	39,950	*41,600	26,400	32,100	19,450	24,650	15,200	23,800	14,700	30'8"
-1500 mm	kg	*15 200	*15 200	*24 050	18 650	*18 600	12 150	*14 700	8950			11 650	7200	8870
-5'0"	lb	*34,450	*34,450	*52,250	40,100	*40,300	26,150	*31,750	19,250			25,750	15,850	29'0"
-3000 mm	kg	*26 200	*26 200	*21 400	18 900	*16 900	12 250	*13 200	9050			*11 750	8250	8070
-10'0"	lb	*57,200	*57,200	*46,400	40,600	*36,500	26,400	*28,250	19,500			*25,850	18,250	26'4"
-4500 mm	kg			*17 050	*17 050	*13 400	12 600					*11 100	10 600	6840
-15'0"	lb			*36,600	*36,600	*28,450	27,200					*24,300	23,700	22'2"



ISO 10567:2007



* Indicates that the load is limited by hydraulic lifting capacity rather than tipping load. The above loads are in compliance with hydraulic excavator lift capacity standard ISO 10567:2007. They do not exceed 87% of hydraulic lifting capacity or 75% of tipping load. Weight of all lifting accessories must be deducted from the above lifting capacities. Lifting capacities are based on the machine standing on a firm, uniform supporting surface. The use of a work tool attachment point to handle/lift objects, could affect the machine lift performance.

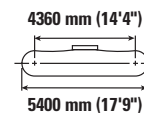
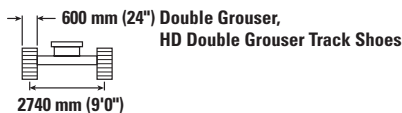
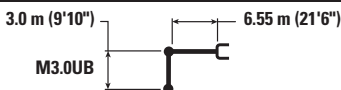
Lift capacity stays with ±5% for all available track shoes.

Always refer to the appropriate Operation and Maintenance Manual for specific product information.

350 Hydraulic Excavator Specifications

Mass Boom Lift Capacities – Counterweight: 9.0 mt (19,842 lb) – without Bucket, Heavy Lift: On

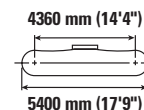
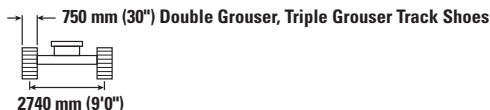
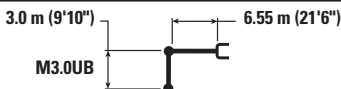
Long Undercarriage



Reach mm ft/in	Unit	3000 mm/10'0"		4500 mm/15'0"		6000 mm/20'0"		7500 mm/25'0"		9000 mm/30'0"		mm ft/in		
		Diagram	Diagram	Diagram	Diagram	Diagram	Diagram	Diagram	Diagram	Diagram	Diagram	Diagram	Diagram	
7500 mm 25'0"	kg lb							*11 600 10 200				*9950 *22,000	9750 21,900	7690 24'11"
6000 mm 20'0"	kg lb							*11 800 *25,750	10 050 21,600			*9700 *21,350	8000 17,800	8550 27'10"
4500 mm 15'0"	kg lb			*19 150 *41,100	*19 150 *41,100	*14 800 *31,950	13 750 29,600	*12 550 *27,300	9700 20,850	*10 850 7150		*9800 *21,550	7050 15,600	9080 29'8"
3000 mm 10'0"	kg lb			*23 300 *50,000	19 500 42,100	*16 700 *36,050	12 850 27,700	*13 500 *29,300	9250 19,900	11 350 24,350	6950 14,950	*10 250 *22,500	6550 14,450	9330 30'7"
1500 mm 5'0"	kg lb			*22 800 *54,850	18 250 39,350	*18 150 *39,300	12 150 26,150	*14 300 *31,000	8850 19,050	11 100 23,900	6750 14,550	10 500 23,150	6400 14,050	9340 30'7"
0 mm 0'0"	kg lb			*25 450 *55,150	17 850 38,350	*18 700 *40,550	11 700 25,200	14 400 30,950	8550 18,450	10 950 6650		10 800 23,800	6550 14,350	9100 29'10"
-1500 mm -5'0"	kg lb	*18 000 *40,700	*18 000 *40,700	*24 000 *52,150	17 800 38,300	*18 200 *39,450	11 550 24,850	*14 250 *30,700	8450 18,200			11 750 25,900	7050 15,550	8590 28'1"
-3000 mm -10'0"	kg lb	*27 350 *59,450	*27 350 *59,450	*21 300 *46,050	18 050 38,800	*16 450 *35,450	11 650 25,100	*12 500 *26,550	8550 18,500			*11 800 *25,950	8200 18,200	7750 25'3"
-4500 mm -15'0"	kg lb			*16 500 *35,300	*16 500 *35,300	*12 450 *26,150	12 050 26,050					*11 050 *24,150	10 950 *24,150	6460 20'10"

Mass Boom Lift Capacities – Counterweight: 9.0 mt (19,842 lb) – without Bucket, Heavy Lift: On

Long Undercarriage



Reach mm ft/in	Unit	3000 mm/10'0"		4500 mm/15'0"		6000 mm/20'0"		7500 mm/25'0"		9000 mm/30'0"		mm ft/in		
		Diagram	Diagram	Diagram	Diagram	Diagram	Diagram	Diagram	Diagram	Diagram	Diagram	Diagram	Diagram	
7500 mm 25'0"	kg lb							*11 600 10 250				*9950 *22,000	9800 22,000	7690 24'11"
6000 mm 20'0"	kg lb							*11 800 *25,750	10 100 21,650			*9700 *21,350	8050 17,850	8550 27'10"
4500 mm 15'0"	kg lb			*19 150 *41,100	*19 150 *41,100	*14 800 *31,950	13 750 29,700	*12 550 *27,300	9700 20,900	*10 850 7200		*9800 *21,550	7100 15,650	9080 29'8"
3000 mm 10'0"	kg lb			*23 300 *50,000	19 550 42,250	*16 700 *36,050	12 900 27,800	*13 500 *29,300	9300 19,950	11 400 24,450	7000 15,000	*10 250 *22,500	6600 14,500	9330 30'7"
1500 mm 5'0"	kg lb			*22 800 *54,850	18 350 39,500	*18 150 *39,300	12 200 26,250	*14 300 *31,000	8850 19,100	11 150 24,000	6800 14,600	10 550 23,250	6400 14,100	9340 30'7"
0 mm 0'0"	kg lb			*25 450 *55,150	17 900 38,500	*18 700 *40,550	11 750 25,300	14 450 31,050	8600 18,500	11 000 6650		10 850 23,900	6550 14,450	9100 29'10"
-1500 mm -5'0"	kg lb	*18 000 *40,700	*18 000 *40,700	*24 000 *52,150	17 900 38,400	*18 200 *39,450	11 600 24,950	*14 250 *30,750	8500 18,250			11 800 26,000	7100 15,600	8590 28'1"
-3000 mm -10'0"	kg lb	*27 350 *59,450	*27 350 *59,450	*21 300 *46,050	18 100 38,900	*16 450 *35,450	11 700 25,200	*12 500 *26,550	8600 18,550			*11 800 *25,950	8250 18,300	7750 25'3"
-4500 mm -15'0"	kg lb			*16 500 *35,300	*16 500 *35,300	*12 450 *26,150	12 100 26,150					*11 050 *24,150	11 000 *24,150	6460 20'10"



ISO 10567:2007



* Indicates that the load is limited by hydraulic lifting capacity rather than tipping load. The above loads are in compliance with hydraulic excavator lift capacity standard ISO 10567:2007. They do not exceed 87% of hydraulic lifting capacity or 75% of tipping load. Weight of all lifting accessories must be deducted from the above lifting capacities. Lifting capacities are based on the machine standing on a firm, uniform supporting surface. The use of a work tool attachment point to handle/lift objects, could affect the machine lift performance.

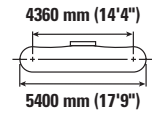
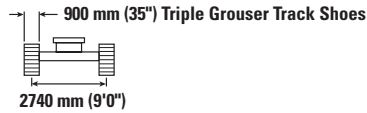
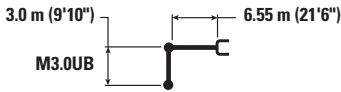
Lift capacity stays with ±5% for all available track shoes.

Always refer to the appropriate Operation and Maintenance Manual for specific product information.

350 Hydraulic Excavator Specifications

Mass Boom Lift Capacities – Counterweight: 9.0 mt (19,842 lb) – without Bucket, Heavy Lift: On

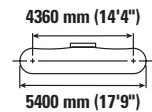
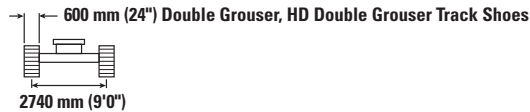
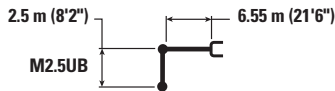
Long Undercarriage



Boom Length mm ft/in	kg lb	3000 mm/10'0"		4500 mm/15'0"		6000 mm/20'0"		7500 mm/25'0"		9000 mm/30'0"		mm ft/in		
7500 mm 25'0"	kg lb							*11 600 25,750	10 350 21,900			*9950 *22,000	9900 *22,000	7690 24'11"
6000 mm 20'0"	kg lb							*11 800 *25,750	10 200 21,900			*9700 *21,350	8100 18,050	8550 27'10"
4500 mm 15'0"	kg lb			*19 150 *41,100	*19 150 *41,100	*14 800 *31,950	13 900 30,000	*12 550 *27,300	9850 21,150	*10 850 7300		*9800 *21,550	7150 15,850	9080 29'8"
3000 mm 10'0"	kg lb			*23 300 *50,000	19 800 42,700	*16 700 *36,050	13 050 28,150	*13 500 *29,300	9400 20,200	11 550 24,800	7100 15,200	*10 250 *22,500	6650 14,700	9330 30'7"
1500 mm 5'0"	kg lb			*22 800 *54,850	18 550 40,000	*18 150 *39,300	12 350 26,550	*14 300 *31,000	9000 19,350	11 300 24,300	6900 14,800	10 700 23,550	7000 14,300	9340 30'7"
0 mm 0'0"	kg lb			*25 450 *55,150	18 150 39,000	*18 700 *40,550	11 900 25,650	14 650 31,450	8700 18,750	11 150 6750		11 000 24,200	6650 14,650	9100 29'10"
-1500 mm -5'0"	kg lb	*18 000 *40,700	*18 000 *40,700	*24 000 *52,150	18 100 38,900	*18 200 *39,450	11 750 25,300	*14 250 *30,750	8600 18,500			*11 850 *26,100	7200 15,850	8590 28'1"
-3000 mm -10'0"	kg lb	*27 350 *59,450	*27 350 *59,450	*21 300 *46,050	18 350 39,400	*16 450 *35,450	11 850 25,500	*12 500 *26,550	8700 18,800			*11 800 *25,950	8350 18,550	7750 25'3"
-4500 mm -15'0"	kg lb			*16 500 *35,300	*16 500 *35,300	*12 450 *26,150	12 250 *26,150					*11 050 *24,150	*11 050 *24,150	6460 20'10"

Mass Boom Lift Capacities – Counterweight: 9.0 mt (19,842 lb) – without Bucket, Heavy Lift: On

Long Undercarriage



Boom Length mm ft/in	kg lb	3000 mm/10'0"		4500 mm/15'0"		6000 mm/20'0"		7500 mm/25'0"		mm ft/in		
7500 mm 25'0"	kg lb									*12 750 *28,200	11 000 24,800	7120 23'0"
6000 mm 20'0"	kg lb					*14 050 *30,450	*14 050 *30,450	*12 600 *27,500	10 000 21,400	*12 350 *27,200	8850 19,650	8050 26'2"
4500 mm 15'0"	kg lb			*20 800 *44,600	*20 800 *44,600	*15 700 *33,900	13 600 29,300	*13 200 *28,750	9650 20,750	*12 250 *26,950	7700 17,100	8610 28'1"
3000 mm 10'0"	kg lb			*53,200	41,200	*17 500 *37,750	12 750 27,550	*14 050 *30,500	9250 19,900	11 600 25,650	7150 15,800	8880 29'1"
1500 mm 5'0"	kg lb					*18 700 *40,400	12 150 26,150	*14 700 31,700	8900 19,150	11 450 25,150	7000 15,350	8890 29'1"
0 mm 0'0"	kg lb			*24 150 *54,500	18 050 38,750	*18 900 *40,900	11 800 25,450	14 500 31,200	8700 18,700	11 800 26,000	7150 15,800	8630 28'3"
-1500 mm -5'0"	kg lb	*18 250 *41,650	*18 250 *41,650	*23 150 *50,400	18 100 38,900	*18 000 *38,950	11 750 25,300	*14 050 *30,200	8650 18,600	*12 550 *27,700	7850 17,300	8090 26'5"
-3000 mm -10'0"	kg lb	*23 950 *52,150	*23 950 *52,150	*19 950 *43,200	18 400 39,600	*15 700 *33,700	11 900 25,700			*12 300 *27,050	9350 20,750	7190 23'5"
-4500 mm -15'0"	kg lb			*14 300 *30,300	*14 300 *30,300					*10 900 *23,650	*10 900 *23,650	5770 18'7"



ISO 10567:2007



* Indicates that the load is limited by hydraulic lifting capacity rather than tipping load. The above loads are in compliance with hydraulic excavator lift capacity standard ISO 10567:2007. They do not exceed 87% of hydraulic lifting capacity or 75% of tipping load. Weight of all lifting accessories must be deducted from the above lifting capacities. Lifting capacities are based on the machine standing on a firm, uniform supporting surface. The use of a work tool attachment point to handle/lift objects, could affect the machine lift performance.

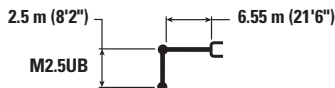
Lift capacity stays with ±5% for all available track shoes.

Always refer to the appropriate Operation and Maintenance Manual for specific product information.

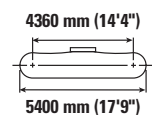
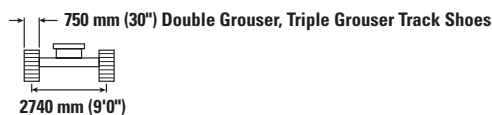
350 Hydraulic Excavator Specifications

Mass Boom Lift Capacities – Counterweight: 9.0 mt (19,842 lb) – without Bucket, Heavy Lift: On

Long Undercarriage



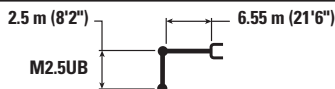
M2.5UB



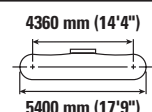
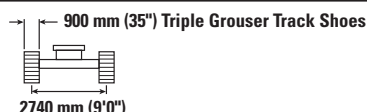
Boom Length mm ft/in	Capacity Unit	3000 mm/10'0"		4500 mm/15'0"		6000 mm/20'0"		7500 mm/25'0"		Attachment Point		mm ft/in
		Diagram 1	Diagram 2	Diagram 1	Diagram 2	Diagram 1	Diagram 2	Diagram 1	Diagram 2	Diagram 1	Diagram 2	
7500 mm 25'0"	kg lb									*12 750 *28,200	11 050 24,900	7120 23'0"
6000 mm 20'0"	kg lb					*14 050 *30,450	*14 050 *30,450	*12 600 *27,500	10 000 21,500	*12 350 *27,200	8850 19,750	8050 26'2"
4500 mm 15'0"	kg lb			*20 800 *44,600	*20 800 *44,600	*15 700 *33,900	13 650 29,400	*13 200 *28,750	9700 20,850	*12 250 *26,950	7750 17,150	8610 28'1"
3000 mm 10'0"	kg lb			*53,200	41,350	*17 500 *37,750	12 800 27,650	*14 050 *30,500	9300 20,000	11 650 25,750	7200 15,850	8880 29'1"
1500 mm 5'0"	kg lb					*18 700 *40,400	12 200 26,250	*14 700 31,850	8950 19,250	11 450 25,250	7000 15,450	8890 29'1"
0 mm 0'0"	kg lb			*24 150 *54,500	18 100 38,900	*18 900 *40,900	11 850 25,550	14 550 31,300	8700 18,750	11 850 26,100	7200 15,850	8630 28'3"
-1500 mm -5'0"	kg lb	*18 250 *41,650	*18 250 *41,650	*23 150 *50,400	18 200 39,050	*18 000 *38,950	11 800 25,400	*14 050 *30,200	8650 18,700	*12 550 *27,700	7850 17,350	8090 26'5"
-3000 mm -10'0"	kg lb	*23 950 *52,150	*23 950 *52,150	*19 950 *43,200	18 500 39,750	*15 700 *33,700	11 950 25,800			*12 300 *27,050	9400 20,850	7190 23'5"
-4500 mm -15'0"	kg lb			*14 300 *30,300	*14 300 *30,300					*10 900 *23,650	*10 900 *23,650	5770 18'7"

Mass Boom Lift Capacities – Counterweight: 9.0 mt (19,842 lb) – without Bucket, Heavy Lift: On

Long Undercarriage



M2.5UB



Boom Length mm ft/in	Capacity Unit	3000 mm/10'0"		4500 mm/15'0"		6000 mm/20'0"		7500 mm/25'0"		Attachment Point		mm ft/in
		Diagram 1	Diagram 2	Diagram 1	Diagram 2	Diagram 1	Diagram 2	Diagram 1	Diagram 2	Diagram 1	Diagram 2	
7500 mm 25'0"	kg lb									*12 750 *28,200	11 150 25,150	7120 23'0"
6000 mm 20'0"	kg lb					*14 050 *30,450	*14 050 *30,450	*12 600 *27,500	10 150 21,750	*12 350 *27,200	8950 19,950	8050 26'2"
4500 mm 15'0"	kg lb			*20 800 *44,600	*20 800 *44,600	*15 700 *33,900	13 800 29,700	*13 200 *28,750	9800 21,100	*12 250 *26,950	7850 17,350	8610 28'1"
3000 mm 10'0"	kg lb			*53,200	41,850	*17 500 *37,750	12 950 27,950	*14 050 *30,500	9400 20,250	11 800 26,050	7300 16,050	8880 29'1"
1500 mm 5'0"	kg lb					*18 700 *40,400	12 350 26,600	*14 700 *31,850	9050 19,500	11 600 25,600	7100 15,650	8890 29'1"
0 mm 0'0"	kg lb			*24 150 *54,500	18 350 39,400	*18 900 *40,900	12 000 25,850	14 750 31,700	8800 19,000	12 000 26,450	7300 16,050	8630 28'3"
-1500 mm -5'0"	kg lb	*18 250 *41,650	*18 250 *41,650	*23 150 *50,400	18 400 39,550	*18 000 *38,950	11 950 25,700	*14 050 *30,200	8800 18,950	*12 550 *27,700	7950 17,600	8090 26'5"
-3000 mm -10'0"	kg lb	*23 950 *52,150	*23 950 *52,150	*19 950 *43,200	18 700 40,200	*15 700 *33,700	12 100 26,100			*12 300 *27,050	9500 21,100	7190 23'5"
-4500 mm -15'0"	kg lb			*14 300 *30,300	*14 300 *30,300					*10 900 *23,650	*10 900 *23,650	5770 18'7"



ISO 10567:2007



* Indicates that the load is limited by hydraulic lifting capacity rather than tipping load. The above loads are in compliance with hydraulic excavator lift capacity standard ISO 10567:2007. They do not exceed 87% of hydraulic lifting capacity or 75% of tipping load. Weight of all lifting accessories must be deducted from the above lifting capacities. Lifting capacities are based on the machine standing on a firm, uniform supporting surface. The use of a work tool attachment point to handle/lift objects, could affect the machine lift performance.

Lift capacity stays with ±5% for all available track shoes.

Always refer to the appropriate Operation and Maintenance Manual for specific product information.

350 Hydraulic Excavator Specifications

Bucket Specifications and Compatibility – Africa, Middle East and Eurasia

	Linkage	Width		Capacity		Weight		Fill	6.9 m (22'8") Reach			6.55 m (21'6") Mass	
		mm	in	m ³	yd ³	kg	lb		%	R2.9 (9'6")	R3.35 (11'0")	R3.9 (12'10")	M2.5 (8'2")
Pin-On (No Quick Coupler)													
Heavy Duty	TB	1650	65	2.41	3.15	2221	4,896	100	⊙	⊙	⊖		
	TB	1900	74	2.78	3.64	2429	5,355	100	⊖	○	○		
Severe Duty	TB	1550	61	2.14	2.80	2329	5,134	90	●	●	⊙		
Heavy Duty	UB	1750	70	3.00	3.92	2669	5,883	100				⊖	○
	UB	1950	77	3.43	4.49	2911	6,417	100				○	◇
Severe Duty	UB	1650	65	2.77	3.62	2737	6,033	90				⊙	⊖
	UB	1750	69	3.00	3.92	2853	6,289	90				⊙	⊖
	UB	1850	73	3.21	4.20	2951	6,505	90				⊖	○
	UB	1700	67	2.77	3.62	3222	7,102	90				⊖	○
Maximum load with pin-on (payload + bucket)								kg	6858	6386	5860	7476	6717
								lb	15,119	14,079	12,919	16,482	14,808
With Cat Pin Grabber Coupler													
Heavy Duty	TB	1650	65	2.41	3.15	2221	4,896	100	⊖	○	◇		
	TB	1900	74	2.78	3.64	2429	5,355	100	○	◇	X		
Severe Duty	TB	1550	61	2.14	2.80	2329	5,134	90	⊙	⊖	○		
Maximum load with coupler (payload + bucket)								kg	5805	5333	4807	6423	5664
								lb	12,797	11,757	10,597	14,160	12,487
With CW Quick Coupler													
Heavy Duty	TB	1650	65	2.41	3.15	2221	4,896	100	⊖	○	○		
	TB	1900	74	2.78	3.64	2429	5,355	100	○	○	◇		
Severe Duty	TB	1550	61	2.14	2.80	2329	5,134	90	⊙	⊙	⊖		
Heavy Duty	UB	1750	70	3.00	3.92	2669	5,883	100				○	◇
	UB	1950	77	3.43	4.49	2911	6,417	100				◇	◇
Severe Duty	UB	1650	65	2.77	3.62	2737	6,033	90				⊖	○
	UB	1750	69	3.00	3.92	2853	6,289	90				○	◇
	UB	1850	73	3.21	4.20	2951	6,505	90				○	◇
	UB	1700	67	2.77	3.62	3222	7,102	90				○	◇
Maximum load with coupler (payload + bucket)								kg	6103	5631	5105	6657	5898
								lb	13,455	12,414	11,255	14,676	13,003

The above loads are in compliance with hydraulic excavator standard EN474-5:2006 + A3:2013, they do not exceed 87% of hydraulic lifting capacity or 75% of tipping capacity with front linkage fully extended at ground line with bucket curled.

Capacity based on ISO 7451:2007.

Bucket weight with Long tips.

Maximum Material Density:

- 2100 kg/m³ (3,500 lb/yd³)
- ⊙ 1800 kg/m³ (3,000 lb/yd³)
- ⊖ 1500 kg/m³ (2,500 lb/yd³)
- 1200 kg/m³ (2,000 lb/yd³)
- ◇ 900 kg/m³ (1,500 lb/yd³)
- X Not Recommended

Caterpillar recommends using appropriate work tools to maximize the value customers receive from our products. Use of work tools, including buckets, which are outside of Caterpillar's recommendations or specifications for weight, dimensions, flows, pressures, etc. may result in less-than-optimal performance, including but not limited to reductions in production, stability, reliability, and component durability. Improper use of a work tool resulting in sweeping, prying, twisting and/or catching of heavy loads will reduce the life of the boom and stick.

350 Hydraulic Excavator Specifications

Bucket Specifications and Compatibility – Australia and New Zealand

	Linkage	Width		Capacity		Weight		Fill	6.9 m (22'8") Reach			6.55 m (21'6") Mass	
		mm	in	m ³	yd ³	kg	lb		%	R2.9 (9'6")	R3.35 (11'0")	R3.9 (12'10")	M2.5 (8'2")
Pin-On (No Quick Coupler)													
Heavy Duty	TB	1650	66	2.41	3.16	2274	5,013	100	⊙	⊖	⊖		
	TB	1850	72	2.69	3.52	2403	5,298	100	⊖	⊖	○		
Severe Duty	TB	1650	66	2.41	3.15	2367	5,218	90	●	⊙	⊖		
Heavy Duty	UB	1950	77	3.43	4.48	2912	6,419	100				○	◇
Maximum load with pin-on (payload + bucket)								kg	6892	6394	5808	7508	6786
								lb	15,194	14,096	12,804	16,552	14,961
With Cat Pin Grabber Coupler													
Heavy Duty	TB	1650	66	2.41	3.16	2274	5,013	100	⊖	○	◇		
	TB	1850	72	2.69	3.52	2403	5,298	100	○	◇	◇		
Severe Duty	TB	1650	66	2.41	3.15	2367	5,218	90	⊖	○	◇		
Maximum load with coupler (payload + bucket)								kg	5839	5341	4755	6455	5733
								lb	12,872	11,774	10,483	14,230	12,639
With CW Quick Coupler													
Heavy Duty	TB	1650	66	2.41	3.16	2274	5,013	100	⊖	○	○		
	TB	1850	72	2.69	3.52	2403	5,298	100	○	○	◇		
Severe Duty	TB	1650	66	2.41	3.15	2367	5,218	90	⊙	⊖	○		
Heavy Duty	UB	1950	77	3.43	4.48	2912	6,419	100				◇	◇
Maximum load with coupler (payload + bucket)								kg	6137	5639	5053	6689	5967
								lb	13,530	12,432	11,140	14,747	13,155

The above loads are in compliance with hydraulic excavator standard EN474-5:2006 + A3:2013, they do not exceed 87% of hydraulic lifting capacity or 75% of tipping capacity with front linkage fully extended at ground line with bucket curled.

Capacity based on ISO 7451:2007.

Bucket weight with Long tips.

Maximum Material Density:

- 2100 kg/m³ (3,500 lb/yd³)
- ⊙ 1800 kg/m³ (3,000 lb/yd³)
- ⊖ 1500 kg/m³ (2,500 lb/yd³)
- 1200 kg/m³ (2,000 lb/yd³)
- ◇ 900 kg/m³ (1,500 lb/yd³)

Caterpillar recommends using appropriate work tools to maximize the value customers receive from our products. Use of work tools, including buckets, which are outside of Caterpillar's recommendations or specifications for weight, dimensions, flows, pressures, etc. may result in less-than-optimal performance, including but not limited to reductions in production, stability, reliability, and component durability. Improper use of a work tool resulting in sweeping, prying, twisting and/or catching of heavy loads will reduce the life of the boom and stick.

350 Hydraulic Excavator Specifications

Bucket Specifications and Compatibility – South America

	Linkage	Width		Capacity		Weight		Fill	6.55 m (21'6") Mass		
		mm	in	m ³	yd ³	kg	lb		%	M2.5 (8'2")	M3.0 (9'10")
Pin-On (No Quick Coupler)											
Severe Duty	UB	1600	63	2.61	3.41	3105	6,844	90	⊙	⊖	
	UB	1700	67	2.77	3.62	3222	7,102	90	⊖	○	
	UB	1650	65	2.77	3.62	2737	6,033	90	⊙	⊖	
	UB	1850	73	3.21	4.20	2951	6,505	90	⊖	○	
Maximum load with pin-on (payload + bucket)								kg	7476	6717	
								lb	16,482	14,808	
With CW Quick Coupler											
Severe Duty	UB	1600	63	2.61	3.41	3105	6,844	90	⊖	○	
	UB	1700	67	2.77	3.62	3222	7,102	90	○	◇	
	UB	1650	65	2.77	3.62	2737	6,033	90	⊖	○	
	UB	1850	73	3.21	4.20	2951	6,505	90	○	◇	
Maximum load with coupler (payload + bucket)								kg	6657	5898	
								lb	14,676	13,003	

The above loads are in compliance with hydraulic excavator standard EN474-5:2006 + A3:2013, they do not exceed 87% of hydraulic lifting capacity or 75% of tipping capacity with front linkage fully extended at ground line with bucket curled.

Capacity based on ISO 7451:2007.

Bucket weight with Long tips.

Maximum Material Density:

- ⊙ 1800 kg/m³ (3,000 lb/yd³)
- ⊖ 1500 kg/m³ (2,500 lb/yd³)
- 1200 kg/m³ (2,000 lb/yd³)
- ◇ 900 kg/m³ (1,500 lb/yd³)

Caterpillar recommends using appropriate work tools to maximize the value customers receive from our products. Use of work tools, including buckets, which are outside of Caterpillar's recommendations or specifications for weight, dimensions, flows, pressures, etc. may result in less-than-optimal performance, including but not limited to reductions in production, stability, reliability, and component durability. Improper use of a work tool resulting in sweeping, prying, twisting and/or catching of heavy loads will reduce the life of the boom and stick.

350 Hydraulic Excavator Specifications

Bucket Specifications and Compatibility – Southeast Asia

	Linkage	Width		Capacity		Weight		Fill %	6.9 m (22'8") Reach		6.55 m (21'6") Mass	
		mm	in	m ³	yd ³	kg	lb		R2.9 (9'6")	R3.35 (11'0")	M2.5 (8'2")	M3.0 (9'10")
Pin-On (No Quick Coupler)												
Heavy Duty	TB	1850	73	2.69	3.52	2428	5,352	100	⊖	⊖		
Severe Duty	TB	1650	66	2.41	3.16	2436	5,370	90	●	⊙		
General Duty	UB	2000	79	3.60	4.71	2890	6,371	100			○	◇
Heavy Duty	UB	1900	75	3.43	4.49	2889	6,368	100			○	◇
Severe Duty	UB	1650	65	2.77	3.62	2675	5,898	90			⊙	⊖
	UB	1850	73	3.21	4.20	2929	6,456	90			⊖	○
Maximum load with pin-on (payload + bucket)								kg	6858	6386	7476	6717
								lb	15,119	14,079	16,482	14,808
With Cat Pin Grabber Coupler												
Heavy Duty	TB	1850	73	2.69	3.52	2428	5,352	100	○	◇		
Severe Duty	TB	1650	66	2.41	3.16	2436	5,370	90	⊖	○		
Maximum load with coupler (payload + bucket)								kg	5805	5333	6423	5664
								lb	12,797	11,757	14,160	12,487
With CW Quick Coupler												
Heavy Duty	TB	1850	73	2.69	3.52	2428	5,352	100	○	○		
Severe Duty	TB	1650	66	2.41	3.16	2436	5,370	90	⊖	⊖		
General Duty	UB	2000	79	3.60	4.71	2890	6,371	100			◇	X
Heavy Duty	UB	1900	75	3.43	4.49	2889	6,368	100			◇	◇
Severe Duty	UB	1650	65	2.77	3.62	2675	5,898	90			⊖	○
	UB	1850	73	3.21	4.20	2929	6,456	90			○	◇
Maximum load with coupler (payload + bucket)								kg	6103	5631	6657	5898
								lb	13,455	12,414	14,676	13,003

The above loads are in compliance with hydraulic excavator standard EN474-5:2006 + A3:2013, they do not exceed 87% of hydraulic lifting capacity or 75% of tipping capacity with front linkage fully extended at ground line with bucket curled.

Capacity based on ISO 7451:2007.

Bucket weight with Long tips.

Maximum Material Density:

- 2100 kg/m³ (3,500 lb/yd³)
- ⊙ 1800 kg/m³ (3,000 lb/yd³)
- ⊖ 1500 kg/m³ (2,500 lb/yd³)
- 1200 kg/m³ (2,000 lb/yd³)
- ◇ 900 kg/m³ (1,500 lb/yd³)
- X Not Recommended

Caterpillar recommends using appropriate work tools to maximize the value customers receive from our products. Use of work tools, including buckets, which are outside of Caterpillar's recommendations or specifications for weight, dimensions, flows, pressures, etc. may result in less-than-optimal performance, including but not limited to reductions in production, stability, reliability, and component durability. Improper use of a work tool resulting in sweeping, prying, twisting and/or catching of heavy loads will reduce the life of the boom and stick.

350 Hydraulic Excavator Specifications

Typical Pass Match Guide

For maximum production and efficiency, we recommend that loading and hauling machines are matched to achieve optimal performance.

Configuration*:

Mass boom, M3.0 m (9'10") UB stick, and 3.21 m³ (4.20 yd³) SDV bucket

Passes Required to Fill Trucks to Rated Capacity

Material Type	Material Density	Cat Articulated Trucks							Cat Off-Highway Trucks
		725	730 EJ	730	735	740 GC	740 EJ	745	770G
Earth	1600 kg/m ³ (2,700 lb/yd ³)	4-5	5-6	5-6	6	7	7-8	8	7-8
Limestone	1540 kg/m ³ (2,600 lb/yd ³)	5-6	6	6	7	8			

*The indicated pass match reflects the machine configuration, fill factor, and typical material density shown. Changes to machine configurations, fill factors, or material density as well as jobsite-specific factors may influence exact pass match recommendations for your application. Consult your Cat dealer for more information.

350 Hydraulic Excavator Specifications

Attachments Offering Guide – Africa, Middle East

Not all Attachments are available in all regions. Consult your Cat dealer for configurations available in your region.

Match

* Working range front only

No Match

PIN-ON ATTACHMENTS

Undercarriage		Long		
Counterweight		9.0 mt (19,842 lb)		
Boom Type		Reach	Mass	
Stick Length		3.35 m (11'0")	2.5 m (8'2")	3.0 m (9'10")
Hydraulic Hammers	H160 S	✓	✓	✓
	H180 GC	✓	✓	✓
	H180 GC S	✓	✓	✓
	H180 S	✓	✓	✓
	H190 S	✓	✓	✓
Multi-Processors	MP332 Concrete Cutter Jaw	✓		
	MP332 Demolition Jaw	✓		
	MP332 Pulverizer Jaw	✓		
	MP332 Shear Jaw	✓		
	MP332 Tank Shear Jaw	✓		
	MP332 Universal Jaw	✓		
	MP332 Concrete Cutter Jaw-Flat Top	✓		
	MP332 Demolition Jaw-Flat Top	✓		
	MP332 Pulverizer Jaw-Flat Top	✓		
	MP332 Shear Jaw-Flat Top	✓		
	MP332 Tank Shear Jaw-Flat Top	✓		
	MP332 Universal Jaw-Flat Top	✓		
	MP345 Concrete Cutter Jaw	✓	✓	✓
	MP345 Demolition Jaw	✓	✓	✓
	MP345 Pulverizer Jaw	✓	✓	✓
	MP345 Shear Jaw	✓	✓	✓
	MP345 Concrete Cutter Jaw-Flat Top	✓	✓	✓
	MP345 Demolition Jaw-Flat Top	✓	✓	✓
	MP345 Pulverizer Jaw-Flat Top	✓*	✓	✓
	MP345 Shear Jaw-Flat Top	✓	✓	✓

(continued on next page)

350 Hydraulic Excavator Specifications

Attachments Offering Guide – Africa, Middle East (continued)

Not all Attachments are available in all regions. Consult your Cat dealer for configurations available in your region.

Match
 * Working range front only
 No Match
 1800 kg/m³ (3,000 lb/yd³)
 1200 kg/m³ (2,000 lb/yd³)

PIN-ON ATTACHMENTS (continued)

Undercarriage		Long		
Counterweight		9.0 mt (19,842 lb)		
Boom Type		Reach	Mass	
Stick Length		3.35 m (11'0")	2.5 m (8'2")	3.0 m (9'10")
Demolition and Sorting Grapples	G345	✓	✓	✓
	G345 Flat Top	✓	✓	✓
Mobile Scrap and Demolition Shears	S3050 Flat Top	✓*	✓	✓
Pulverizers	P232 Secondary Pulverizer	✓		
	P245 Secondary Pulverizer	✓*	✓	✓*
	P332 Primary Pulverizer	✓		
	P332 Primary Pulverizer-Flat Top	✓		
	P345 Primary Pulverizer	✓	✓	✓
	P345 Primary Pulverizer-Flat Top	✓*	✓	✓*
Orange Peel Grapples	GSH455-1000	●		
	GSH455-1500	●		
	GSH455-2000	○		
	GSH555-1000	●		
	GSH555-1500	●		
	GSM-50-1000	●		
	GSM-50-1250	●		
	GSM-50-1500	○		
	GSM-50-2000	○		
	GSM-60-1250	○	●	○
	GSM-60-1500		○	○
	GSM-60-2000		○	
	Clamshell Grapples	CTV30-1700	●	
CTV30-1900		○		
CTV30-2300		○		

(continued on next page)

350 Hydraulic Excavator Specifications

Attachments Offering Guide – Africa, Middle East (continued)

Not all Attachments are available in all regions. Consult your Cat dealer for configurations available in your region.

Match
 * Working range front only
 † Allowed usage on machine less than 50%
 No Match

CAT PIN GRABBER COUPLER ATTACHMENTS

Undercarriage		Long		
Counterweight		9.0 mt (19,842 lb)		
Boom Type		Reach	Mass	
Stick Length		3.35 m (11'0")	2.5 m (8'2")	3.0 m (9'10")
Hydraulic Hammers	H160 S	✓	✓	✓
	H180 GC	✓*	✓	✓*
	H180 GC S	✓	✓	✓
	H180 S	✓†	✓	✓
Multi-Processors	MP332 Concrete Cutter Jaw	✓		
	MP332 Demolition Jaw	✓		
	MP332 Pulverizer Jaw	✓		
	MP332 Shear Jaw	✓		
	MP332 Tank Shear Jaw	✓		
	MP332 Universal Jaw	✓		
	MP332 Concrete Cutter Jaw-Flat Top	✓		
	MP332 Demolition Jaw-Flat Top	✓		
	MP332 Pulverizer Jaw-Flat Top	✓		
	MP332 Shear Jaw-Flat Top	✓		
	MP332 Tank Shear Jaw-Flat Top	✓*		
	MP332 Universal Jaw-Flat Top	✓		
	MP345 Concrete Cutter Jaw		✓	
	MP345 Demolition Jaw		✓*	
	MP345 Pulverizer Jaw		✓*	
MP345 Shear Jaw		✓		
MP345 Shear Jaw-Flat Top		✓*		
Demolition and Sorting Grapples	G345	✓	✓	✓
	G345 Flat Top	✓	✓	✓
Pulverizers	P232 Secondary Pulverizer	✓		
	P332 Primary Pulverizer	✓		
	P332 Primary Pulverizer-Flat Top	✓		

(continued on next page)

350 Hydraulic Excavator Specifications

Attachments Offering Guide – Africa, Middle East (continued)

Not all Attachments are available in all regions. Consult your Cat dealer for configurations available in your region.

Match

* Working range front only

No Match

CW-55 DEDICATED COUPLER ATTACHMENTS

Undercarriage		Long		
Counterweight		9.0 mt (19,842 lb)		
Boom Type		Reach	Mass	
Stick Length		3.35 m (11'0")	2.5 m (8'2")	3.0 m (9'10")
Hydraulic Hammers	H160 S	✓	✓	✓
	H180 GC	✓*	✓	✓
	H180 GC S	✓	✓	✓
	H180 S	✓	✓	✓
	H190 S		✓*	
Multi-Processors	MP332 Concrete Cutter Jaw	✓		
	MP332 Demolition Jaw	✓		
	MP332 Pulverizer Jaw	✓		
	MP332 Shear Jaw	✓		
	MP332 Tank Shear Jaw	✓		
	MP332 Universal Jaw	✓		
	MP332 Concrete Cutter Jaw-Flat Top	✓		
	MP332 Demolition Jaw-Flat Top	✓		
	MP332 Pulverizer Jaw-Flat Top	✓		
	MP332 Shear Jaw-Flat Top	✓		
	MP332 Tank Shear Jaw-Flat Top	✓*		
	MP332 Universal Jaw-Flat Top	✓		
	MP345 Concrete Cutter Jaw	✓*	✓	✓*
	MP345 Demolition Jaw		✓	✓*
	MP345 Pulverizer Jaw		✓	✓*
	MP345 Shear Jaw	✓*	✓	✓*
	MP345 Concrete Cutter Jaw-Flat Top		✓	
	MP345 Demolition Jaw-Flat Top		✓*	
MP345 Pulverizer Jaw-Flat Top		✓*		
MP345 Shear Jaw-Flat Top		✓		
Demolition and Sorting Grapples	G345	✓	✓	✓
	G345 Flat Top	✓	✓	✓
Mobile Scrap and Demolition Shears	S3050 Flat Top		✓*	
Pulverizers	P232 Secondary Pulverizer	✓		
	P332 Primary Pulverizer	✓		
	P332 Primary Pulverizer-Flat Top	✓		
	P345 Primary Pulverizer		✓	

BOOM-MOUNT ATTACHMENTS

Undercarriage		Long		
Counterweight		9.0 mt (19,842 lb)		
Boom Type		Reach	Mass	
Mobile Scrap and Demolition Shears	S2090	✓		✓
	S3070 Flat Top	✓		
	S3090 Flat Top	✓*		

350 Hydraulic Excavator Specifications

Attachments Offering Guide – Australia and New Zealand

Not all Attachments are available in all regions. Consult your Cat dealer for configurations available in your region.

Match
 * Working range front only
 † Allowed usage on machine less than 50%
 No Match

PIN-ON ATTACHMENTS

Undercarriage		Long				
Counterweight		9.0 mt (19,842 lb)				
Boom Type		Reach			Mass	
Stick Length		2.9 m (9'6")	3.35 m (11'0")	3.9 m (12'10")	2.5 m (8'2")	3.0 m (9'10")
Hydraulic Hammers	H160 S	✓	✓	✓	✓	✓
	H180 GC	✓	✓	✓	✓	✓
	H180 GC S	✓	✓	✓	✓	✓
	H180 S	✓	✓	✓	✓	✓
	H190 S	✓	✓	✓*	✓	✓
Demolition and Sorting Grapples	G345	✓	✓	✓	✓	✓
	G345 Flat Top	✓	✓	✓	✓	✓
Mobile Scrap and Demolition Shears	S3050 Flat Top	✓	✓*		✓	✓

CAT PIN GRABBER COUPLER ATTACHMENTS

Undercarriage		Long				
Counterweight		9.0 mt (19,842 lb)				
Boom Type		Reach			Mass	
Stick Length		2.9 m (9'6")	3.35 m (11'0")	3.9 m (12'10")	2.5 m (8'2")	3.0 m (9'10")
Hydraulic Hammers	H160 S	✓	✓	✓	✓	✓
	H180 GC	✓	✓	✓*	✓	✓*
	H180 GC S	✓	✓	✓	✓	✓
	H180 S	✓†	✓†	✓*†	✓	✓
Demolition and Sorting Grapples	G345	✓	✓	✓	✓	✓
	G345 Flat Top	✓	✓	✓	✓	✓

BOOM-MOUNT ATTACHMENTS

Undercarriage		Long	
Counterweight		9.0 mt (19,842 lb)	
Boom Type		Reach	
Mobile Scrap and Demolition Shears	S3070 Flat Top	✓	
	S3090 Flat Top	✓*	

350 Hydraulic Excavator Specifications

Attachments Offering Guide – Eurasia

Not all Attachments are available in all regions. Consult your Cat dealer for configurations available in your region.

Match

* Working range front only

No Match

PIN-ON ATTACHMENTS

Undercarriage		Long				
		9.0 mt (19,842 lb)				
Counterweight		Reach			Mass	
Boom Type		3.9 m (12'10")	2.9 m (9'6")	3.35 m (11'0")	2.5 m (8'2")	3.0 m (9'10")
Stick Length						
Hydraulic Hammers	H160 S	✓	✓	✓	✓	✓
	H180 GC	✓	✓	✓	✓	✓
	H180 GC S	✓	✓	✓	✓	✓
	H180 S	✓	✓	✓	✓	✓
	H190 S	✓*	✓	✓	✓	✓
Multi-Processors	MP332 Concrete Cutter Jaw	✓	✓	✓		
	MP332 Demolition Jaw	✓	✓	✓		
	MP332 Pulverizer Jaw	✓	✓	✓		
	MP332 Shear Jaw	✓	✓	✓		
	MP332 Tank Shear Jaw	✓	✓	✓		
	MP332 Universal Jaw	✓	✓	✓		
	MP332 Concrete Cutter Jaw-Flat Top	✓	✓	✓		
	MP332 Demolition Jaw-Flat Top	✓	✓	✓		
	MP332 Pulverizer Jaw-Flat Top	✓	✓	✓		
	MP332 Shear Jaw-Flat Top	✓	✓	✓		
	MP332 Tank Shear Jaw-Flat Top	✓	✓	✓		
	MP332 Universal Jaw-Flat Top	✓	✓	✓		
	MP345 Concrete Cutter Jaw	✓	✓	✓	✓	✓
	MP345 Demolition Jaw	✓	✓	✓	✓	✓
	MP345 Pulverizer Jaw	✓	✓	✓	✓	✓
	MP345 Shear Jaw	✓	✓	✓	✓	✓
	MP345 Concrete Cutter Jaw-Flat Top	✓	✓	✓	✓	✓
	MP345 Demolition Jaw-Flat Top	✓*	✓	✓	✓	✓
	MP345 Pulverizer Jaw-Flat Top	✓*	✓	✓*	✓	✓
	MP345 Shear Jaw-Flat Top	✓	✓	✓	✓	✓

(continued on next page)

350 Hydraulic Excavator Specifications

Attachments Offering Guide – Eurasia (continued)

Not all Attachments are available in all regions. Consult your Cat dealer for configurations available in your region.

Match
 * Working range front only
 No Match
 1800 kg/m³ (3,000 lb/yd³)
 1200 kg/m³ (2,000 lb/yd³)

PIN-ON ATTACHMENTS (continued)

Undercarriage		Long				
Counterweight		9.0 mt (19,842 lb)				
Boom Type		Reach			Mass	
Stick Length		3.9 m (12'10")	2.9 m (9'6")	3.35 m (11'0")	2.5 m (8'2")	3.0 m (9'10")
Demolition and Sorting Grapples	G345	✓	✓	✓	✓	✓
	G345 Flat Top	✓	✓	✓	✓	✓
Mobile Scrap and Demolition Shears	S3050 Flat Top		✓	✓*	✓	✓
Pulverizers	P232 Secondary Pulverizer	✓	✓	✓		
	P245 Secondary Pulverizer			✓*	✓	✓*
	P332 Primary Pulverizer	✓	✓	✓		
	P332 Primary Pulverizer-Flat Top	✓	✓	✓		
	P345 Primary Pulverizer	✓	✓	✓	✓	✓
	P345 Primary Pulverizer-Flat Top		✓	✓*	✓	✓*
Orange Peel Grapples	GSH455-1000	●	●	●		
	GSH455-1500	●	●	●		
	GSH455-2000	○	●	○		
	GSH555-1000	●	●	●		
	GSH555-1500	○	●	●		
	GSM-50-1000	●	●	●		
	GSM-50-1250	●	●	●		
	GSM-50-1500	○	●	○		
	GSM-50-2000		○	○		
	GSM-60-1250		○	○	●	○
	GSM-60-1500		○		○	○
	GSM-60-2000				○	
Clamshell Grapples	CTV30-1700	●	●	●		
	CTV30-1900	○	●	○		
	CTV30-2300	○	○	○		
	CTV30-2700		○			
	CTV30-2900		○			

(continued on next page)

350 Hydraulic Excavator Specifications

Attachments Offering Guide – Eurasia (continued)

Not all Attachments are available in all regions. Consult your Cat dealer for configurations available in your region.

Match
 * Working range front only
 † Allowed usage on machine less than 50%
 No Match

CAT PIN GRABBER COUPLER ATTACHMENTS

Undercarriage		Long				
Counterweight		9.0 mt (19,842 lb)				
Boom Type		Reach			Mass	
Stick Length		3.9 m (12'10")	2.9 m (9'6")	3.35 m (11'0")	2.5 m (8'2")	3.0 m (9'10")
Hydraulic Hammers	H160 S	✓	✓	✓	✓	✓
	H180 GC	✓*	✓*	✓*	✓*	✓*
	H180 GC S	✓	✓	✓	✓	✓
	H180 S	✓*†	✓	✓†	✓	✓
Multi-Processors	MP332 Concrete Cutter Jaw	✓	✓	✓		
	MP332 Demolition Jaw	✓	✓	✓		
	MP332 Pulverizer Jaw	✓	✓	✓		
	MP332 Shear Jaw	✓	✓	✓		
	MP332 Tank Shear Jaw	✓	✓	✓		
	MP332 Universal Jaw	✓	✓	✓		
	MP332 Concrete Cutter Jaw-Flat Top	✓	✓	✓		
	MP332 Demolition Jaw-Flat Top	✓	✓	✓		
	MP332 Pulverizer Jaw-Flat Top	✓	✓	✓		
	MP332 Shear Jaw-Flat Top	✓	✓	✓		
	MP332 Tank Shear Jaw-Flat Top	✓*	✓	✓*		
	MP332 Universal Jaw-Flat Top	✓	✓	✓		
	MP345 Concrete Cutter Jaw		✓*		✓	
	MP345 Demolition Jaw		✓*		✓*	
	MP345 Pulverizer Jaw		✓*		✓*	
	MP345 Shear Jaw		✓		✓	
MP345 Shear Jaw-Flat Top				✓*		
Demolition and Sorting Grapples	G345	✓	✓	✓	✓	✓
	G345 Flat Top	✓	✓	✓	✓	✓
Pulverizers	P232 Secondary Pulverizer	✓	✓	✓		
	P332 Primary Pulverizer	✓	✓	✓		
	P332 Primary Pulverizer-Flat Top	✓	✓	✓		

(continued on next page)

350 Hydraulic Excavator Specifications

Attachments Offering Guide – Eurasia (continued)

Not all Attachments are available in all regions. Consult your Cat dealer for configurations available in your region.

Match

* Working range front only

No Match

CW-55 DEDICATED COUPLER ATTACHMENTS

Undercarriage		Long				
Counterweight		9.0 mt (19,842 lb)				
Boom Type		Reach			Mass	
Stick Length		3.9 m (12'10")	2.9 m (9'6")	3.35 m (11'0")	2.5 m (8'2")	3.0 m (9'10")
Hydraulic Hammers	H160 S	✓	✓	✓	✓	✓
	H180 GC		✓	✓*	✓	✓
	H180 GC S	✓	✓	✓	✓	✓
	H180 S	✓*	✓	✓	✓	✓
	H190 S		✓*		✓*	
Multi-Processors	MP332 Concrete Cutter Jaw	✓	✓	✓		
	MP332 Demolition Jaw	✓	✓	✓		
	MP332 Pulverizer Jaw	✓	✓	✓		
	MP332 Shear Jaw	✓	✓	✓		
	MP332 Tank Shear Jaw	✓	✓	✓		
	MP332 Universal Jaw	✓	✓	✓		
	MP332 Concrete Cutter Jaw-Flat Top	✓	✓	✓		
	MP332 Demolition Jaw-Flat Top	✓	✓	✓		
	MP332 Pulverizer Jaw-Flat Top	✓	✓	✓		
	MP332 Shear Jaw-Flat Top	✓	✓	✓		
	MP332 Tank Shear Jaw-Flat Top	✓*	✓	✓*		
	MP332 Universal Jaw-Flat Top	✓	✓	✓		
	MP345 Concrete Cutter Jaw		✓	✓*	✓	✓*
	MP345 Demolition Jaw		✓*		✓	✓*
	MP345 Pulverizer Jaw		✓*		✓	✓*
	MP345 Shear Jaw		✓	✓*	✓	✓*
	MP345 Concrete Cutter Jaw-Flat Top		✓*		✓	
	MP345 Demolition Jaw-Flat Top				✓*	
	MP345 Pulverizer Jaw-Flat Top				✓*	
	MP345 Shear Jaw-Flat Top		✓*		✓	
Demolition and Sorting Grapples	G345	✓	✓	✓	✓	✓
	G345 Flat Top	✓	✓	✓	✓	✓
Mobile Scrap and Demolition Shears	S3050 Flat Top				✓*	
Pulverizers	P232 Secondary Pulverizer	✓	✓	✓		
	P332 Primary Pulverizer	✓	✓	✓		
	P332 Primary Pulverizer-Flat Top	✓	✓	✓		
	P345 Primary Pulverizer	✓*			✓	

BOOM-MOUNT ATTACHMENTS

Undercarriage		Long		
Counterweight		9.0 mt (19,842 lb)		
Boom Type		Reach		Mass
Mobile Scrap and Demolition Shears	S2090	✓		✓
	S3070 Flat Top	✓		
	S3090 Flat Top	✓*		

350 Hydraulic Excavator Specifications

Attachments Offering Guide – South America

Not all Attachments are available in all regions. Consult your Cat dealer for configurations available in your region.

Match

* Working range front only

No Match

PIN-ON ATTACHMENTS

Undercarriage		Long	
Counterweight		9.0 mt (19,842 lb)	
Boom Type		Mass	
Stick Length		2.5 m (8'2")	3.0 m (9'10")
Hydraulic Hammers	H160 S	✓	✓
	H180 GC	✓	✓
	H180 GC S	✓	✓
	H180 S	✓	✓
	H190 S	✓	✓
Multi-Processors	MP345 Concrete Cutter Jaw	✓	✓
	MP345 Demolition Jaw	✓	✓
	MP345 Pulverizer Jaw	✓	✓
	MP345 Shear Jaw	✓	✓
	MP345 Concrete Cutter Jaw-Flat Top	✓	✓
	MP345 Demolition Jaw-Flat Top	✓	✓
	MP345 Pulverizer Jaw-Flat Top	✓	✓
	MP345 Shear Jaw-Flat Top	✓	✓
Demolition and Sorting Grapples	G345	✓	✓
	G345 Flat Top	✓	✓
Pulverizers	P245 Secondary Pulverizer	✓	✓*
	P345 Primary Pulverizer	✓	✓
	P345 Primary Pulverizer-Flat Top	✓	✓*
Mobile Scrap and Demolition Shears	S3050 Flat Top	✓	✓

CAT PIN GRABBER COUPLER ATTACHMENTS

Undercarriage		Long	
Counterweight		9.0 mt (19,842 lb)	
Boom Type		Mass	
Stick Length		2.5 m (8'2")	3.0 m (9'10")
Hydraulic Hammers	H160 S	✓	✓
	H180 GC	✓*	✓*
	H180 GC S	✓	✓
	H180 S	✓	✓
Multi-Processors	MP345 Concrete Cutter Jaw	✓	
	MP345 Demolition Jaw	✓*	
	MP345 Pulverizer Jaw	✓*	
	MP345 Shear Jaw	✓	
	MP345 Shear Jaw-Flat Top	✓*	
Demolition and Sorting Grapples	G345	✓	✓
	G345 Flat Top	✓	✓

(continued on next page)

350 Hydraulic Excavator Specifications

Attachments Offering Guide – South America (continued)

Not all Attachments are available in all regions. Consult your Cat dealer for configurations available in your region.

Match

* Working range front only

No Match

CW-55 DEDICATED COUPLER ATTACHMENTS

Undercarriage		Long	
Counterweight		9.0 mt (19,842 lb)	
Boom Type		Mass	
Stick Length		2.5 m (8'2")	3.0 m (9'10")
Hydraulic Hammers	H160 S	✓	✓
	H180 GC	✓	✓
	H180 GC S	✓	✓
	H180 S	✓	✓
	H190 S	✓*	
Multi-Processors	MP345 Concrete Cutter Jaw	✓	✓*
	MP345 Demolition Jaw	✓	✓*
	MP345 Pulverizer Jaw	✓	✓*
	MP345 Shear Jaw	✓	✓*
	MP345 Concrete Cutter Jaw-Flat Top	✓	
	MP345 Demolition Jaw-Flat Top	✓*	
	MP345 Pulverizer Jaw-Flat Top	✓*	
Demolition and Sorting Grapples	G345	✓	✓
	G345 Flat Top	✓	✓
Pulverizers	P345 Primary Pulverizer	✓	
Mobile Scrap and Demolition Shears	S3050 Flat Top	✓*	

BOOM-MOUNT ATTACHMENTS

Undercarriage		Long	
Counterweight		9.0 mt (19,842 lb)	
Boom Type		Mass	
Mobile Scrap and Demolition Shears	S2090		✓

350 Hydraulic Excavator Specifications

Attachments Offering Guide – Southeast Asia

Not all Attachments are available in all regions. Consult your Cat dealer for configurations available in your region.

Match

* Working range front only

No Match

PIN-ON ATTACHMENTS

Undercarriage		Long			
Counterweight		9.0 mt (19,842 lb)			
Boom Type		Reach		Mass	
Stick Length		2.9 m (9'6")	3.35 m (11'0")	2.5 m (8'2")	3.0 m (9'10")
Hydraulic Hammers	H180 GC	✓	✓	✓	✓
	H180 GC S	✓	✓	✓	✓

Standard and Optional Equipment

Standard and optional equipment may vary. Consult your Cat dealer for details.

	Standard	Optional		Standard	Optional
BOOMS, STICKS AND LINKAGES			ELECTRICAL SYSTEM		
6.55 m (21'6") Mass boom		✓	Maintenance-free 1,000 CCA batteries (×2)	✓	
6.9 m (22'8") Reach boom		✓	Centralized electrical disconnect switch	✓	
2.5 m (8'2") Mass stick		✓	LED exterior chassis and boom lights	✓	
2.9 m (9'6") Reach stick		✓	Premium surround working lights		✓
3.0 m (9'10") Mass stick		✓	ENGINE		
3.35 m (11'0") Reach stick		✓	115 Amp alternator	✓	
3.35 m (11'0") HD Reach stick		✓	Cold start block heaters		✓
3.9 m (12'10") Reach stick		✓	Three selectable modes: Power, Smart, Eco	✓	
UB family bucket linkage		✓	Auto engine speed control	✓	
TB family bucket linkage		✓	52° C (126° F) high-ambient cooling	✓	
CAT TECHNOLOGY			Hydraulic reverse fan		✓
VisionLink®**	✓		-18° C (0° F) cold start capability	✓	
Remote Flash	✓		-32° C (-25° F) cold start capability		✓
Remote Troubleshoot	✓		Double element air filter with integrated pre-cleaner	✓	
Cat Grade connectivity		✓ ²	Dual stage four micron main filter	✓	
Compatibility with radios and base stations from Trimble, Topcon, and Leica	✓		10 micron primary filter with water separator	✓	
Capability to install 3D grade systems from Trimble, Topcon, and Leica	✓		Electric fuel priming pump	✓	
Cat Grade 2D		✓	Secure start with PIN code	✓	
Cat Grade 2D with Attachment Ready Option (ARO)		✓	Remote disable	✓	
Cat Grade 3D single GNSS		✓	HYDRAULIC SYSTEM		
Cat Grade 3D dual GNSS		✓	Boom and stick regeneration circuit	✓	
Cat Assist:		✓	Electronic main control valve	✓	
– Grade Assist			Auto hydraulic oil warmup	✓	
– Boom Assist			Auto dig boost		✓
– Bucket Assist			Auto heavy lift	✓	
– Swing Assist			Bio hydraulic oil capability	✓	
– Lift Assist			Fine swing		✓ ¹
Cat Payload:		✓	Reverse swing damping valve	✓	
– Static weigh			Auto swing parking brake	✓	
– Semiautomatic calibration			High performance hydraulic return filter	✓	
– Payload/cycle information			Two speed travel	✓	
– USB reporting capability			One-way auxiliary circuit		✓
Laser catcher		✓	Combined two-way auxiliary circuit		✓
Work tool recognition (PL161)**	✓		Combined two-way auxiliary circuit with hammer return filter		✓
Work tool tracking (PL161)**	✓		Medium-pressure auxiliary circuit		✓
Operator coaching		✓	Quick coupler circuit for Cat Pin Grabber		✓
Cat Tilt Rotator (TRS) Integration		✓	Quick coupler circuit for CW dedicated		✓
			Hydraulic Efficiency Monitoring		✓

*Connect subscription only. Additional subscriptions are available. Contact your Cat dealer for availability.

**Requires PL161 attachment locator on work tool and Bluetooth® receiver on machine.

¹Optional Africa, Middle East only

²Optional Australia-New Zealand only

(continued on next page)

350 Standard and Optional Equipment

Standard and Optional Equipment (continued)

Standard and optional equipment may vary. Consult your Cat dealer for details.

	Standard	Optional		Standard	Optional
SAFETY AND SECURITY			UNDERCARRIAGE AND STRUCTURES		
Caterpillar One Key security system	✓		Long undercarriage	✓	
Cat Command (remote control)		✓	Towing eye on base frame	✓	
2D E-Fence:		✓	Full-length track guiding guards		✓
– E-ceiling			Segmented two-piece track guiding guards		✓
– E-floor			Swivel guard	✓	
– E-swing			HD bottom guard	✓	
– E-wall			HD travel motor guards	✓	
– E-cab avoidance			Grease lubricated track	✓	
Auto hammer stop	✓		HD swing frame	✓	
Lockable disconnect switch	✓		HD swing bearing	✓	
Lockable external tool/storage box	✓		9 mt (19,842 lb) counterweight	✓	
Lockable door, fuel, and hydraulic tank locks	✓		600 mm (24") double grouser, HD double grouser track shoes		✓
Lockable fuel drain compartment	✓		750 mm (30") triple grouser shoes		✓
Service platform with anti-skid plate and recessed bolts	✓		900 mm (35") triple grouser shoes		✓
Right Hand (RH) handrail and handhold	✓				
Signaling/warning horn	✓				
Travel alarm		✓			
Swing alarm		✓			
Ground-level secondary engine shutoff switch	✓				
Rearview camera	✓				
Right-hand-sideview camera		✓ ³			
360° visibility		✓			
Operator Protective Guards		✓			
Inspection lighting		✓			
SERVICE AND MAINTENANCE					
Integrated vehicle health management system	✓				
Grouped engine oil and fuel filters	✓				
Scheduled Oil Sampling (S·O·S SM) ports	✓				
Electric refueling pump with auto shutoff		✓			
QuickEvac TM maintenance ready		✓			

³Required in Saudi Arabia.

Dealer Installed Kits and Attachments

Attachments may vary. Consult your Cat dealer for details.

CAB <ul style="list-style-type: none">• Radial lower wiper• Left Hand (LH)/RH electrical pedal for tool control• Dual exit rear window kit• Rain protector plus cab light cover• 75 mm (3") retractable seat belt	ELECTRICAL <ul style="list-style-type: none">• Premium surround working lights GUARDS <ul style="list-style-type: none">• Side rubber bumper guard• Mesh guard full front• Mesh guard half front• Full protecting vandalism guard	SAFETY AND SECURITY <ul style="list-style-type: none">• Bluetooth receiver kit• Bluetooth key fob• Operator Protective Guards• Cat Detect – People Detection• Cat Command – Remote control kit
--	--	---

350 Cab Options

	Essential	Deluxe
ROPS	○	●
High-resolution 203 mm (8") LCD touchscreen monitor	●	●
High-resolution 254 mm (10") LCD touchscreen monitor	○	○
Auto bi-level air conditioner	●	●
Jog dial and shortcut keys for monitor control	X	●
Keyless push-to-start engine control	●	●
Height-adjustable console	X	●
Tilt-up left-side console	X	●
Air-suspension seat	●	X
Heated air-suspension seat	X	●
51 mm (2") seat belt	●	●
Monitor integrated Bluetooth radio with USB/Auxiliary ports	X	●
Bluetooth radio with USB/Aux ports	●	X
12V DC outlets	X	●
24V DC outlet	●	X
Document storage	X	●
Overhead storage and rear storage with nets	X	●
Beverage holder	●	●
Cup holder	○	●
Openable two-piece front window	●	●
Rear window emergency exit	●	●
Radial wiper with washer	●	●
Openable polycarbonate skylight hatch	X	●
Openable steel hatch	●	X
LED dome light	●	●
Floor welcome light	X	●
Roof sunscreen	X	●
Roller front sunscreen	●	●
Roller rear sunscreen	○	○
Washable floor mat	●	●
Beacon ready	X	●
Cat Stick Steer	○	○
Auxiliary relay	○	○

- Standard
- Optional
- X Not available

The following information applies to the machine at the time of final manufacture as configured for sale in the regions covered in this document. The content of this declaration is valid as of the date issued; however, content related to machine features and specifications are subject to change without notice. For additional information, please see the machine's Operation and Maintenance Manual.

For more information on sustainability in action and our progress, please visit <https://www.caterpillar.com/en/company/sustainability>.

Engine

- The Cat® C9.3B engine meets Brazil MAR-1 emission standards, equivalent to U.S. EPA Tier 3 and EU Stage IIIA.
- Cat engines are compatible with diesel fuel blended with following lower-carbon intensity fuels** up to:
 - ✓ 100% biodiesel FAME (fatty acid methyl ester)*
 - ✓ 100% renewable diesel, HVO (hydrogenated vegetable oil) and GTL (gas-to-liquid) fuels

Refer to guidelines for successful application. Please consult your Cat dealer or "Caterpillar Machine Fluids Recommendations" (SEBU6250) for details.

**For use of blends higher than 20% biodiesel, consult your Cat dealer.*

***Tailpipe greenhouse gas emissions from lower-carbon intensity fuels are essentially the same as traditional fuels.*

Air Conditioning System

- The air conditioning system on this machine contains the fluorinated greenhouse gas refrigerant R134a (Global Warming Potential = 1430). The system contains 1.0 kg (2.2 lb) of refrigerant which has a CO₂ equivalent of 1.430 metric tonnes (1.576 tons).

Paint

- Based on best available knowledge, the maximum allowable concentration, measured in parts per million (PPM), of the following heavy metals in paint are:
 - Barium < 0.01%
 - Cadmium < 0.01%
 - Chromium < 0.01%
 - Lead < 0.01%

Sound Performance

ISO 6395:2008 (external) – 107 dB(A)

ISO 6396:2008 (inside cab) – 75 dB(A)

- Hearing protection may be needed when operating with an open operator station and cab (when not properly maintained or doors/windows open) for extended periods or in a noisy environment.

Oils and Fluids

- Caterpillar factory fills with ethylene glycol coolants. Cat Diesel Engine Antifreeze/Coolant (DEAC) and Cat Extended Life Coolant (ELC) can be recycled. Consult your Cat dealer for more information.
- Cat Bio HYDO™ Advanced is an EU Ecolabel approved biodegradable hydraulic oil.
- Additional fluids are likely to be present, please consult the Operations and Maintenance Manual or the Application and Installation guide for complete fluid recommendations and maintenance intervals.

Features and Technology

- The following features and technology may contribute to fuel savings and/or carbon reduction. Features may vary. Consult your Cat dealer for details.
 - Smart mode matches machine power to digging requirements automatically
 - Eco mode minimizes fuel consumption for light applications
 - One-touch low idle with automatic engine speed control
 - Available Cat technologies improve operator efficiency by up to 45%
 - Cut costs with extended maintenance intervals



For more complete information on Cat products, dealer services, and industry solutions, visit us on the web at www.cat.com

© 2024 Caterpillar
All rights reserved

Materials and specifications are subject to change without notice. Featured machines in photos may include additional equipment. See your Cat dealer for available options.

CAT, CATERPILLAR, LET'S DO THE WORK, their respective logos, "Caterpillar Corporate Yellow," the "Power Edge" and Cat "Modern Hex" trade dress as well as corporate and product identity used herein, are trademarks of Caterpillar and may not be used without permission. VisionLink is a trademark of Caterpillar Inc., registered in the United States and in other countries.

AEXQ3476-03 (05-2024)
Replaces AEXQ3476-02
Build Number: 06C
(Afr-ME, Aus-NZ,
Eurasia, S Am, SE Asia)

