

LEARN MORE ABOUT CAT MH3000 SERIES MATERIAL HANDLERS

To learn more or receive a quote for the new Cat material handlers, please fill out the form and we will arrange for a dealer to contact you.

I am interested in: Purchasing Rental

First name

Company

Last name

Address

Email address

City

Business phone

Country

Learn more

Receive a quote

SEND >>

CAT[®] NEXT GENERATION MH3000 SERIES MATERIAL HANDLERS

CHOOSE A CONFIGURATION TO MATCH YOUR NEEDS



MAKE YOUR MOVE



ADD VALUE TO YOUR BUSINESSES.
Through CVAs, we offer customers the best possible service and support.

www.cat.com

© 2022 Caterpillar. All rights reserved.



THE NEW MATERIAL HANDLERS THAT MOVE MORE!

In your business, every move you make counts. Like choosing precisely the right machine for scrap, waste or recycling work so you can do more at less cost.

Well, the next generation of material handlers from Cat® redefines the word 'more'. Meet the new MH3000 series...

Highly efficient engines for even more fuel-saving performance. A fully redesigned cab with a more comfortable seat, more visibility, and more protection. Greater reach and extra swing torque, so you can move more material in every shift. Oh yes, and we reinforced the boom, sticks and other high-stress areas for greater durability too. Not to mention, a host of safety features, simplified serviceability for reduced maintenance, and lower operating costs.

In short, the power, comfort and reliability you need for even the toughest jobs. Take a look at this exciting new range and choose the configuration that is right for you!

CONTACT US

Want a quick quote on a Cat MH machine and/or work tool?

- 1) Save this pdf on your device
- 2) Mark the configuration of interest
- 3) Mail it to us.

It's that easy. We'll get in touch with you shortly.

MH3022

MH3024

MH3026

MH3040

MH3250

MH3260



MH3022: THE INDOOR CHAMPION

If you want improved productivity for indoor material handling applications, the MH3022 is exactly right for the job. Featuring simple-to-use technologies, a redesigned cab for enhanced comfort, and more options to match your work needs.

By combining higher performance with lower fuel consumption, these versatile and easy-to-maintain machines will boost your productivity and your profitability! Reliable and durable, they are safe and efficient workhorses that will operate day in, day out.



SUPERIOR PERFORMANCE

12% wider footprint, faster cycle times, cab avoidance system.*

LOWER OPERATING COSTS

E-fan cooling (auto-reverse), long life filters, fewer hoses.

ENHANCED COMFORT

Deluxe/Premium cabs, ergonomic controls, superb visibility (rear/side view cameras).

* when compared to previous series

CONFIGURATIONS MH3022

INDUSTRIAL STICKS



Boom	Stick Length	Reach	Height	Select
MH 17'7" 5.35 m	13'1" 4.0 m	29'6" 9 m	34'6" 10.5 m	<input type="checkbox"/>
MH 17'7" 5.35 m	14'9" 4.5 m	30'11" 9.4 m	35'9" 10.9 m	<input type="checkbox"/>
MH 21'0" 6.4 m	13'1" 4.0 m	32'10" 10 m	37'8" 11.5 m	<input type="checkbox"/>
MH 21'0" 6.4 m	14'9" 4.5 m	34'2" 10.4 m	38'9" 11.8 m	<input type="checkbox"/>
MH 21'0" 6.4 m	16'5" 5.0 m	36'1" 11 m	40'8" 12.4 m	<input type="checkbox"/>

STRAIGHT STICKS



MH 17'7" 5.35m	14'1" 4.3 m	30'5" 9.3 m	35'4" 10.8 m	<input type="checkbox"/>
MH 21'0" 6.40 m	14'1" 4.3 m	33'9" 10.3 m	38'5" 11.7 m	<input type="checkbox"/>
1pc 18'6" 5.65m	R8'2" R2.5	27'2" 8.3 m	27'0" 8.2 m	<input type="checkbox"/>
1pc 18'6" 5.65 m	R9'6" R2.9	28'5" 8.7 m	27'8" 8,4 m	<input type="checkbox"/>
VA 17'3" 5.26m	R8'2" R2.5	26'0" 7.9 m	27'11" 8.5 m	<input type="checkbox"/>
VA 17'3" 5.26m	R9'6" R2.9	27'3" 8.3 m	28'10" 8.8 m	<input type="checkbox"/>

UNDERCARRIAGE U/C 8'4" 2.55 m



MH U/C



MH U/C Blade



GRAPPLES

Orange Peel Grapples



GSH



GSV



Waste/Sorting Grapples



G300



Clamshell Grapples



CTV



MAGNET



SHEAR S3000



QUICK COUPLER PIN GRABBER



QUICK COUPLER CW



QUICK COUPLER HCS

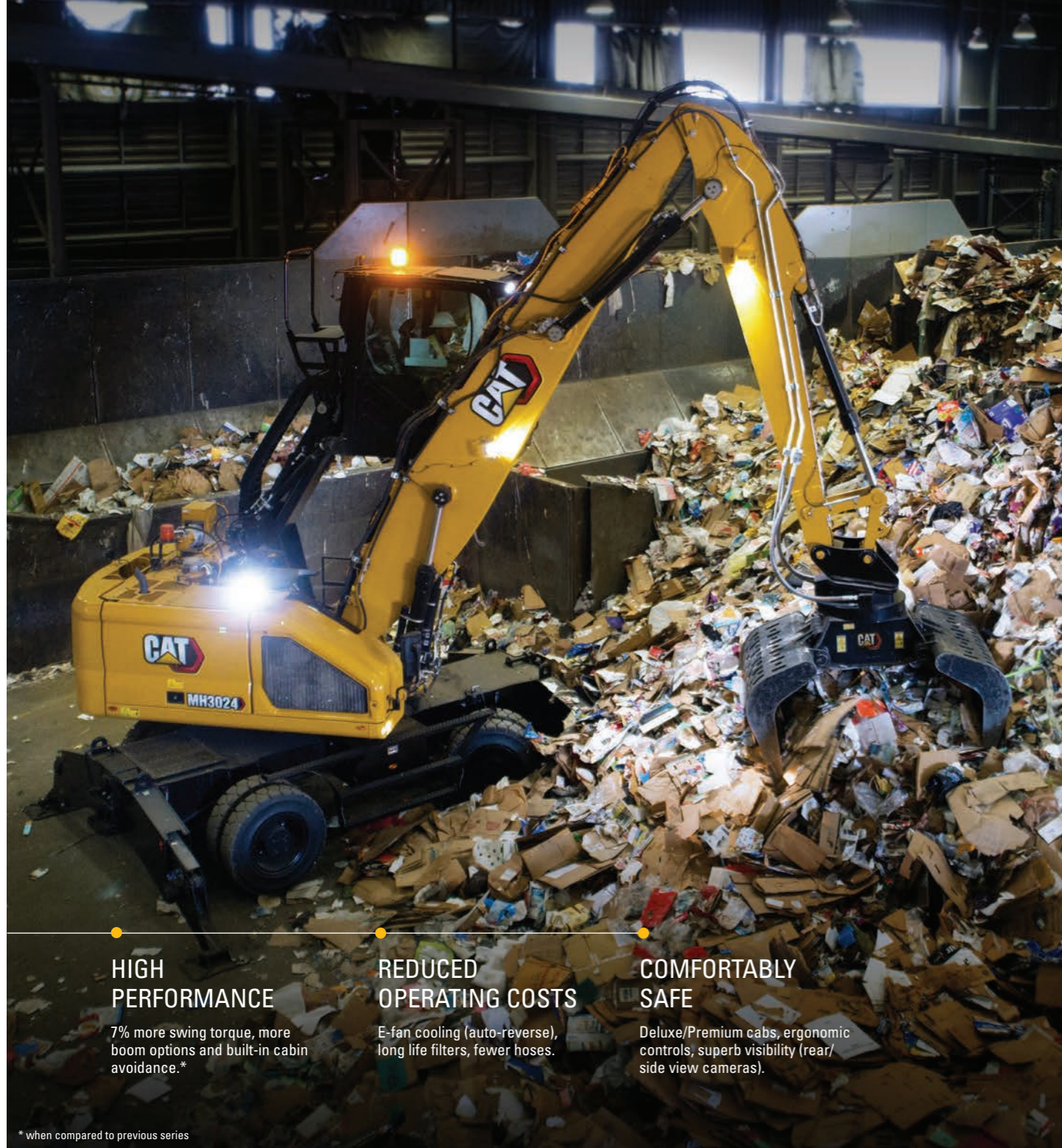


MH U/C = 4 Stabilizer, swing bearing centered

MH3024: ACHIEVES MORE WITH LESS

This purpose-built material handler handles the toughest waste and scrapyard applications...and still saves you money! It's highly productive. And with longer life filters and less frequent oil changes, maintenance intervals can be as much as doubled.

Performance boosting features include greater swing torque and a new 7.45 m MH boom with up to 12 m reach. And with cabin avoidance as a standard feature of the redesigned cab, 'work in comfort' takes on a new meaning.



HIGH PERFORMANCE

7% more swing torque, more boom options and built-in cabin avoidance.*

REDUCED OPERATING COSTS

E-fan cooling (auto-reverse), long life filters, fewer hoses.

COMFORTABLY SAFE

Deluxe/Premium cabs, ergonomic controls, superb visibility (rear/side view cameras).

* when compared to previous series

CONFIGURATIONS MH3024

INDUSTRIAL STICKS



Boom	Stick Length	Reach	Height	Select
MH 21'0" 6.4 m	16'5" 5.0 m	36'1" 11 m	40'8" 12.4 m	<input type="checkbox"/>
MH 24'5" 7.45 m	16'5" 5.0 m	39'5" 12 m	42'9" 13 m	<input type="checkbox"/>

STRAIGHT STICKS



MH 21'0" 6.4 m	14'1" 4.3 m	33'9" 10.3 m	38'5" 11.7 m	<input type="checkbox"/>
MH 24'5" 7.45 m	14'1" 4.3 m	37'1" 11.3 m	40'7" 12.4 m	<input type="checkbox"/>
1pc 18'6" 5.65 m	R8'2" R2.5	27'2" 8.3 m	27'0" 8.2 m	<input type="checkbox"/>
1pc 18'6" 5.65 m	R9'6" R2.9	28'5" 8.7 m	27'8" 8.4 m	<input type="checkbox"/>
VA 17'3" 5.26 m	R8'2" R2.5	26'0" 7.9 m	27'11" 8.5 m	<input type="checkbox"/>
VA 17'3" 5.26 m	R9'6" R2.9	27'3" 8.3 m	28'10" 8.8 m	<input type="checkbox"/>

UNDERCARRIAGE U/C 9'0" 2.75 m



Excavator U/C

Excavator U/C



MH U/C

MH U/C Blade

UNDERCARRIAGE U/C 9'10" 2.99 m



MH U/C

MH U/C Blade

GRAPPLES

Orange Peel Grapples



GSH



GSV

Waste/Sorting Grapples



G300

Clamshell Grapples



CTV

MAGNET



SHEAR S3000



QUICK COUPLER PIN GRABBER



QUICK COUPLER CW



QUICK COUPLER HCS



MH U/C = 4 Stabilizer, swing bearing centered,

Excavator U/C = combination of stabilizers and blade, swing bearing off-center

MH3026: A STEP AHEAD IN STABILITY

Step into the MH3026 from Cat and experience extra stability thanks to the new undercarriage design and its increased footprint. It'll give operators the confidence to move more material more quickly than ever before.

Safety is another powerful feature of these new machines, with the in-cab monitor displaying two cameras for increased visibility. Standard cab avoidance technology reduces risk even further.

Step up your profitability and push down your costs. Reliably. Safely. Comfortably.



GREATER PRODUCTIVITY

More stable, with up to 13 m reach and up to 15% more swing torque.*

CUTS OPERATING COSTS

E-fan cooling (auto-reverse), long life filters.

MORE OPERATOR EFFICIENCY

Smart technologies to boost operator effectiveness, all-new cab, joystick steering.

* when compared to previous series

CONFIGURATIONS MH3026

INDUSTRIAL STICKS



Boom	Stick Length	Reach	Height	Select
MH 22'8" 6.9 m	18'1" 5.5 m	39'5" 12 m	43'6" 13.3 m	<input type="checkbox"/>
MH 24'7" 7.5 m	18'1" 5.5 m	41'4" 12.6 m	45'9" 13.9 m	<input type="checkbox"/>
MH 24'7" 7.5 m	19'8" 6.0 m	42'8" 13 m	46'10" 14.3 m	<input type="checkbox"/>

STRAIGHT STICKS



MH 24'7" 7.5 m	16'5" 5.0 m	39'8" 12.1 m	44'2" 13.4 m	<input type="checkbox"/>
----------------	-------------	--------------	--------------	--------------------------

UNDERCARRIAGE U/C 9'10" 2.99



MH U/C



MH U/C Blade

GRAPPLES

Orange Peel Grapples



GSH



GSV

Waste/Sorting Grapples



G300

Clamshell Grapples



CTV

SHEAR S3000



MAGNET



QUICK COUPLER PIN GRABBER



QUICK COUPLER CW



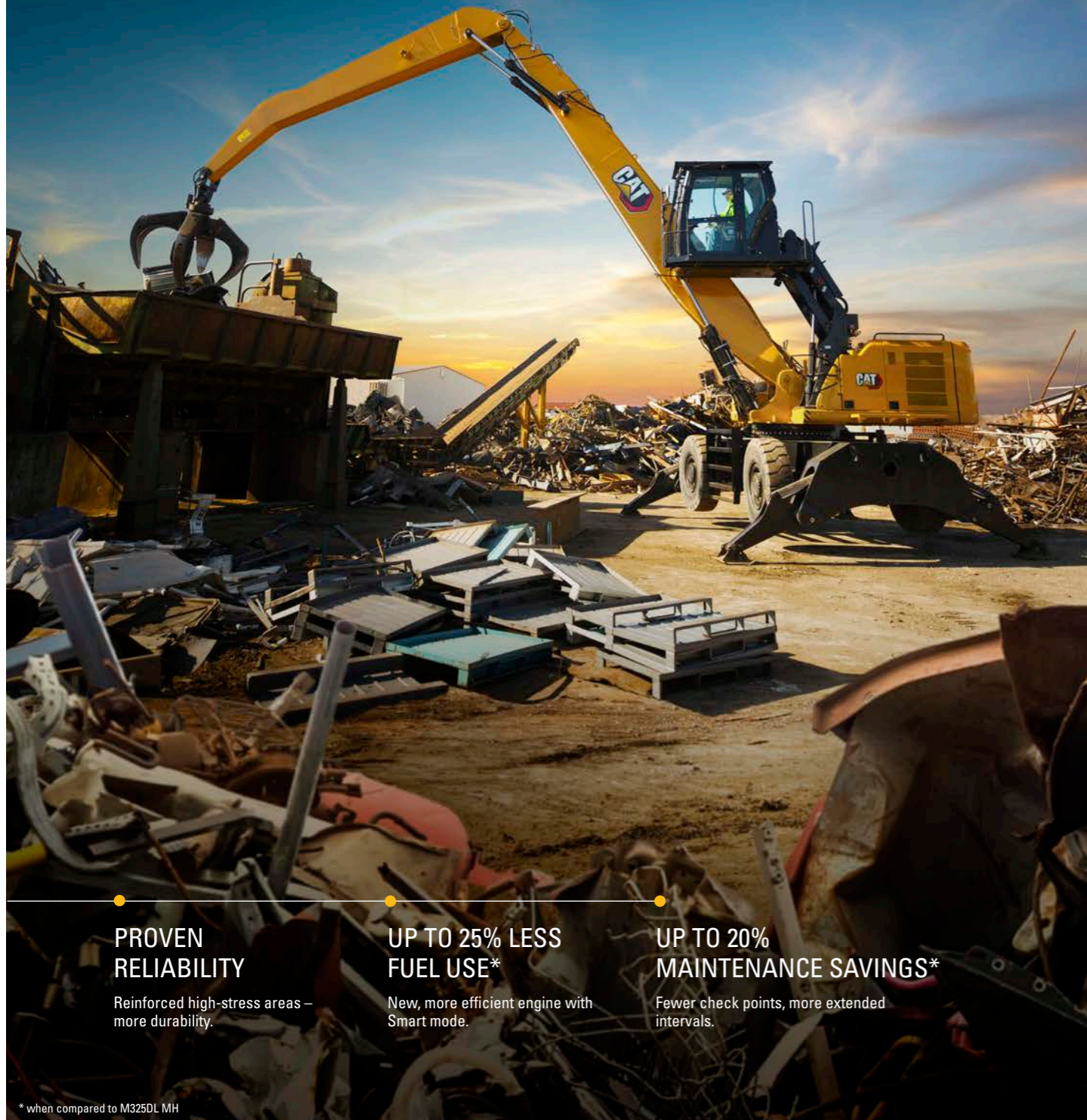
QUICK COUPLER HCS



MH U/C = 4 Stabilizer, swing bearing centered,

MH3040: IN A CLASS OF ITS OWN

The MH3040 is the top performer in its class. A new, fuel-saving engine with selectable power modes. A brand-new comfortable cab with joystick steering that operators will love. Extended reach (up to 15.5 m) and 12% faster swing speed,* so it can move more material every shift. And, like the rest of the range, it's flexible and versatile with reinforced high-stress areas for extra reliability, a host of safety features, and simplified serviceability with extended maintenance intervals.



PROVEN RELIABILITY

Reinforced high-stress areas – more durability.

UP TO 25% LESS FUEL USE*

New, more efficient engine with Smart mode.

UP TO 20% MAINTENANCE SAVINGS*

Fewer check points, more extended intervals.

* when compared to M325DL MH

CONFIGURATIONS MH3040

OVER/UNDER LOG LOADER



Boom	Stick Length	Reach	Height	Select
MH 22'4" 6.81 m	13'3" 4.04 m	42'0" 12.8 m	50'6" 15.4 m	<input type="checkbox"/>

INDUSTRIAL STICKS



MH 30'6" 9.3 m	18'7" 5.7 m	47'3" 14.4 m	54'8" 16.7 m	<input type="checkbox"/>
MH 30'6" 9.3 m	23'3" 7.1 m	50'10" 15.5 m	57'5" 17.5 m	<input type="checkbox"/>

UNDERCARRIAGE U/C 10'7" 3.2 m



MH U/C

GRAPPLES

Orange Peel Grapples



GSH



GSV

Clamshell Grapples



CTV

MAGNET



MH U/C = 4 Stabilizer, swing bearing centered,

MH3250: THE POPULAR CHOICE

When you're looking for the best balance between power and economy, productivity and fuel consumption, comfort and safety, the MH3250 is the popular choice.

Next to its high-performance engine and advanced electro-hydraulic system, this versatile machine also offers great all-round visibility and other important features that increase safety and boost comfort levels for operators. With longer service intervals and a reputation for reliability, this machine is also popular for its low operating costs.



PERFECT BALANCE

An electro-hydraulic system that keeps power and efficiency firmly in balance.

SAFETY FIRST

All-round visibility, powerful LED lights, FOGS, and boom/stick check valves.

ALL-DAY PRODUCTIVITY

Easy-to-reach controls and a comfortable cab keep operators in peak form.

CONFIGURATIONS MH3250

INDUSTRIAL STICKS



Boom	Stick Length	Reach	Height	Select
MH 30'2" 9.2 m	24'11" 7.6 m	52'6" 16.01 m	55'3" 16.85 m	<input type="checkbox"/>
MH 30'2" 9.2 m	20'0" 6.1 m	48'0" 14.62 m	51'9" 15.77 m	<input type="checkbox"/>

TRACK VARIABLE GAUGE UNDERCARRIAGE

Retracted 10'7" 3.2 m

Extended 12'2" 3.7 m

GRAPPLES

Orange Peel Grapples



GSH



GSV

Clamshell Grapples



CTV

MAGNET



MH3260: ROOM TO MANEUVER

The MH3260 has a range of features that make it a winner in material handling applications. It begins with the all-new, spacious and ergonomic cab, with its hydraulic cab riser, wide seat and easy to reach controls that give operators the space to move and work in comfort.

Combining high performance with lower fuel consumption gives owners more financial headroom too. Together with reduced maintenance needs, the MH3260 delivers up to 20% lower operating costs.*



OPTIMUM COMFORT

Wide adjustable seat, auto climate control and easy-to-reach controls.

SUPERIOR SERVICEABILITY

Synchronized (and fewer) filter changes, reduced operator interaction.

UP TO 20% LOWER OPERATING COSTS*

Less maintenance and reduced fuel consumption.

* when compared to 345C MH

CONFIGURATIONS MH3260

INDUSTRIAL STICKS



Boom	Stick Length	Reach	Height	Select
MH 32'6" 9.9 m	29'10" 9.1 m	59'1" 18 m	58'6" 17.82 m	<input type="checkbox"/>
MH 32'6" 9.9 m	24'5" 7.43 m	54'0" 16.45 m	55'0" 16.77 m	<input type="checkbox"/>

TRACK VARIABLE GAUGE UNDERCARRIAGE

Retracted 10'7" 3.2 m
Extended 12'2" 3.7 m

GRAPPLES

Orange Peel Grapples



GSH



GSV

Clamshell Grapples



CTV

MAGNET

