

# GOVERNMENTAL SOLUTIONS

SUMMER 2022

A CATERPILLAR PUBLICATION SERVING GOVERNMENTAL AGENCIES

MAY GOD BLESS  
MAYFIELD

*Thank You*

FIRST RESPONDERS

ROAD TO  
**RECOVERY**

A COMMUNITY RALLIES AFTER DEVASTATING TORNADO

**CATERPILLAR®**



**DON'T WASTE YOUR TIME  
ON OTHER WHEEL LOADERS.**

# NEW **914 & 920** WASTE HANDLERS

## **MACHINES MADE TO MEET YOUR NEEDS**

Cat® 914 and 920 Waste Handler Wheel Loaders set a new standard for power and efficiency in a smaller machine, keeping your production levels high and owning and operating costs low. These machines are designed to perform in even the toughest environments with features like a reversing engine fan, heavy-duty guarding package, programmable kickouts and hydraulic cylinder snubbing.

### **Machine Guarding Package**

914 and 920 Waste Handlers come with a comprehensive guarding package that provides superior protection for your machine. With extra steel guards for the engine compartment, bottom, hitch and lights, your machine's most critical components are well protected, even in the harshest environments.

### **Hydraulic Cylinder Snubbing**

These loaders are designed with a hydraulic cylinder snubbing feature which slows down the hydraulics at the programmable position or end of each cylinder stroke for a soft "catch," ensuring smoother operation, better material retention and less wear and tear on pins and bushings—and most importantly, the operator.

### **Programmable Kickouts**

Set kickouts for upper and lower lift limits as well as bucket tilt, so you can quickly and confidently hit your mark every time. Entering a refuse pile at the right height and angle has been shown to extend cutting edge life by up to 20 percent. You can even save different kickouts

for different attachments to seamlessly switch between buckets and forks.

### **Enhanced Visibility**

Keep your crew safe in the cab and on the ground with better all-around visibility. This includes enhanced line-of-sight visibility from the cab, as well as a standard integrated rearview camera and an optional front-view camera.

### **Reversing Engine Fan**

True to its name, the reversing engine fan purges dust and debris from your cooling module, so your engine can deliver the performance you need to consistently get the job done. You can set the fan to automatically reverse throughout a shift, or a manual purge can be performed anytime the operator determines a need.

### **Kit Strategy**

Get the most out of the machines made for you and boost productivity by making your Cat 914 or 920 Wheel Loader a waste handler with a Waste Handler Kit. The kit can be installed by your Cat dealer or your own staff.

All-around visibility is further enhanced with the availability of a rearview camera. The deluxe cab ensures operator comfort with a heated, air suspension seat and easy-to-use controls. Available features such as Implement and Hystat Aggressiveness, Ride Control, Lift and Tilt Kickouts, Fork/Bucket Mode and Rimpull Control enable the operator to customize the machine on a soft-touch keypad.

**To learn more, contact our dealership. ☎**

**4 Next Generation Material Handlers**

Increased reliability, lower operating costs, outstanding performance

**6 The Cat® App**

Machine data at your fingertips

**7 My.Cat.Com**

Online hub for your equipment information



**8 New 432 & 434 Backhoe Loaders. Take Control**

Improve safety. Prevent accidents. Reduce costs.



**ON THE COVER:**

Following a devastating tornado, contractors are working to put Western Kentucky back on its feet. **10**



**9 From The Archive**

The Traxcavator: Predecessor to Cat® Track Loaders



**10 Road to Recovery**

Community rallies after devastating tornado

**14 953/963 Track Loaders**

The first machine on the job and the last to leave

**15 Cat® Safety**

Six steps for safe Lockout/Tagout

*Governmental Solutions* is published by High Velocity Communications Inc. on behalf of Caterpillar and your Cat Dealer. Publisher, Tim O'Brien • Editor, John Rondy • Creative Director, Jay Blazek • Director of Client Services, Kelly Pemper. Every attempt has been made to ensure specifications are accurate. Because specifications are subject to change without notice, check with us, your Cat Dealer, for the latest equipment information. Some photography provided courtesy of Caterpillar Inc. High Velocity Communications Inc., 1720 Dolphin Drive, Suite D, Waukesha, WI 53186-1489. Phone (262) 544-6600. Please submit address corrections and changes via e-mail to: Kelly@HighVelocityCommunications.com. © 2022 High Velocity Communications Inc. Printed in the U.S.A. **Volume 22 Number 2**. © 2022 Caterpillar. All Rights Reserved. CAT, CATERPILLAR, LET'S DO THE WORK, their respective logos, "Caterpillar Yellow", the "Power Edge" and Cat "Modern Hex" trade dress as well as corporate and product identity used herein, are trademarks of Caterpillar and may not be used without permission. VisionLink® is a trademark of Trimble Navigation Limited, registered in the United States and in other countries.

**CAT.COM/GOVERNMENTAL**

Includes complete specifications for all machines. Check this out and more at **Cat.com/governmental**.



# NEW NEXT GENERATION MATERIAL HANDLERS

## INCREASED RELIABILITY, LOWER OPERATING COSTS, OUTSTANDING PERFORMANCE

Setting the standard for uncompromising power and reliable performance, the Cat® family of purpose-built, Next Gen material handlers delivers high efficiency in demanding waste and scrap handling applications.

For maximum versatility, Cat Material Handlers are available in either track or wheel configurations:

### **Wheeled Material Handlers**

**MH3022, MH3024, MH3026, MH3040**

### **Tracked Material Handlers**

**MH3250, MH3260**

Longer maintenance intervals and improved fuel efficiency decrease owning and operating costs. An entirely new cab concept elevates operator comfort to increase productivity.

Advanced electrohydraulic systems optimize the balance of power and efficiency, improving cycle times to handle more material in less time.

Cat engines that power Next Gen material handlers meet U.S. EPA Tier 4 Final emission standards. Maintenance-free aftertreatment systems reduce operating costs and maximize uptime.

### **Reimagined comfort**

Offering a choice of deluxe and premium interiors, the new Next Gen cab features a joystick steering option, eliminating the steering column to significantly improve forward visibility, leg room and ease of cab entry. Further facilitating cab entry and exit, the left-hand console tilts up. All controls are conveniently positioned in front of the operator within easy reach to avoid unnecessary movements.

A larger, 10-inch high-resolution touchscreen monitor with jog-dial provides easy navigation of the intuitive operator controls. Different machine operators can store their specific joystick and preferred power mode settings, and the machine automatically recalls the settings based on the Operator ID.

The choice between Power and Economy modes fine-tunes power requirements to the task at hand, offering lower fuel consumption than previous models, without sacrificing machine performance.

Heavy lift mode boosts lifting capacities to handle heavy loads more efficiently. By enabling the boom to freely travel up and down without using pump flow, the standard Smart Boom™ enables the operator to focus on grapple control and achieve smoother, more fuel-efficient cycle times. All models provide greater



durability by utilizing continuous top- and side-plate construction of the boom and stick.

### Designed for safe operation

Smaller cab pillars, combined with large tempered windows and a flat engine hood, provide excellent all-around operator visibility. Standard right-side camera, upgradable to 360-degree vision, displays video feed on the large in-cab touchscreen monitor to further enhance work area visibility. The cab design includes thick, impact-resistant laminated safety windshield that meets P5A standards. The standard Falling Object Guard System (FOGS) protects operators from falling and flying debris.

A ground-level shutoff switch stops all fuel to the engine, shutting down the machine. All daily maintenance points are quickly accessed from ground level, while a new service platform with steps provides easy access to the upper service area.

### Cat attachments increase productivity

Easily expand the performance and flexibility of your machine by using Cat attachments. Each attachment is designed to fit the weight and horsepower of Cat

material handlers to match your application needs for improved performance, safety, and stability. Available grapples include orange peel, demolition, sorting and clamshell—plus multi-processors.

### Superior serviceability

Standard Product Link™ captures critical operating data such as location, hours, fuel usage, productivity, idle time, maintenance alerts and fault codes, which can be remotely accessed and tracked to boost fleet management efficiency.

Operators conveniently track filter life and maintenance intervals on the in-cab, high-resolution monitor. A high-efficiency cooling fan features a standard automatic reverse function to keep the radiator core clean, maximizing machine uptime. An optional vibrating screen activates during reverse fan operation to further improve dust and debris removal. Conveniently located Cat S•O•S<sup>SM</sup> ports enable quick fluid sample extraction for analysis.

***For more information about the reliable, high-performance family of Cat Material Handlers, contact our dealership. ☎***

## MATERIAL HANDLER SPECIFICATIONS

Model	MH3022	MH3024	MH3026	MH3040	MH3250	MH3260
Engine	Cat® C4.4	Cat® C4.4	Cat® C7.1	Cat® C7.1	Cat® C9.3B	Cat® C13
Net Power (hp)	145	171	171	202	311	424
Operating Weight (lb)	54,000	59,100	64,375	89,940	107,700	133,200
Max. Reach (ft)	33.8	39.4	42.7	50.8	52.5	59.1
Max. Height (ft)	38.4	42.8	46.8	57.4	55.3	58.6



# THE CAT® APP

## MACHINE DATA AT YOUR FINGERTIPS

The Cat® App and My.Cat.Com are companion applications that work together to save time and automate equipment management. Both put the right information at your fingertips, so you can reduce costs and downtime. When you use one tool versus the other depends on your job, location and preferred way of working.

### Connect everywhere with the Cat App

Whether you're on site, at home or in transit from one job to another, use your phone or tablet for everything from checking equipment location to ordering parts or self-installing telematics devices.

### Answers you need on your mobile device

Wherever you use your phone—around the jobsite, in your vehicle, even in your machine—you can use the Cat App. There's no need to sift through large amounts of data. Get answers to common questions and complete everyday tasks without turning on your computer or returning to the office.

### See whole fleet without driving from site to site

View your full asset list at a glance and regularly check updated hour, fuel level and utilization information. Use the Google maps feature to see the assets closest to your current location.

### In your office to order parts or request service?

Do it immediately on the app. Plus, when you request service, auto-filled location and machine information may save you the time and effort of typing. Ask our dealership if this feature is available in your area.

### Plan service when it doesn't impact production

Receive notifications about upcoming service indicators based on machine operating hours so you can schedule services proactively.

### Customize notifications

Customize what fault codes, alerts and machine operating conditions you want to monitor, even if you don't check the app every day.

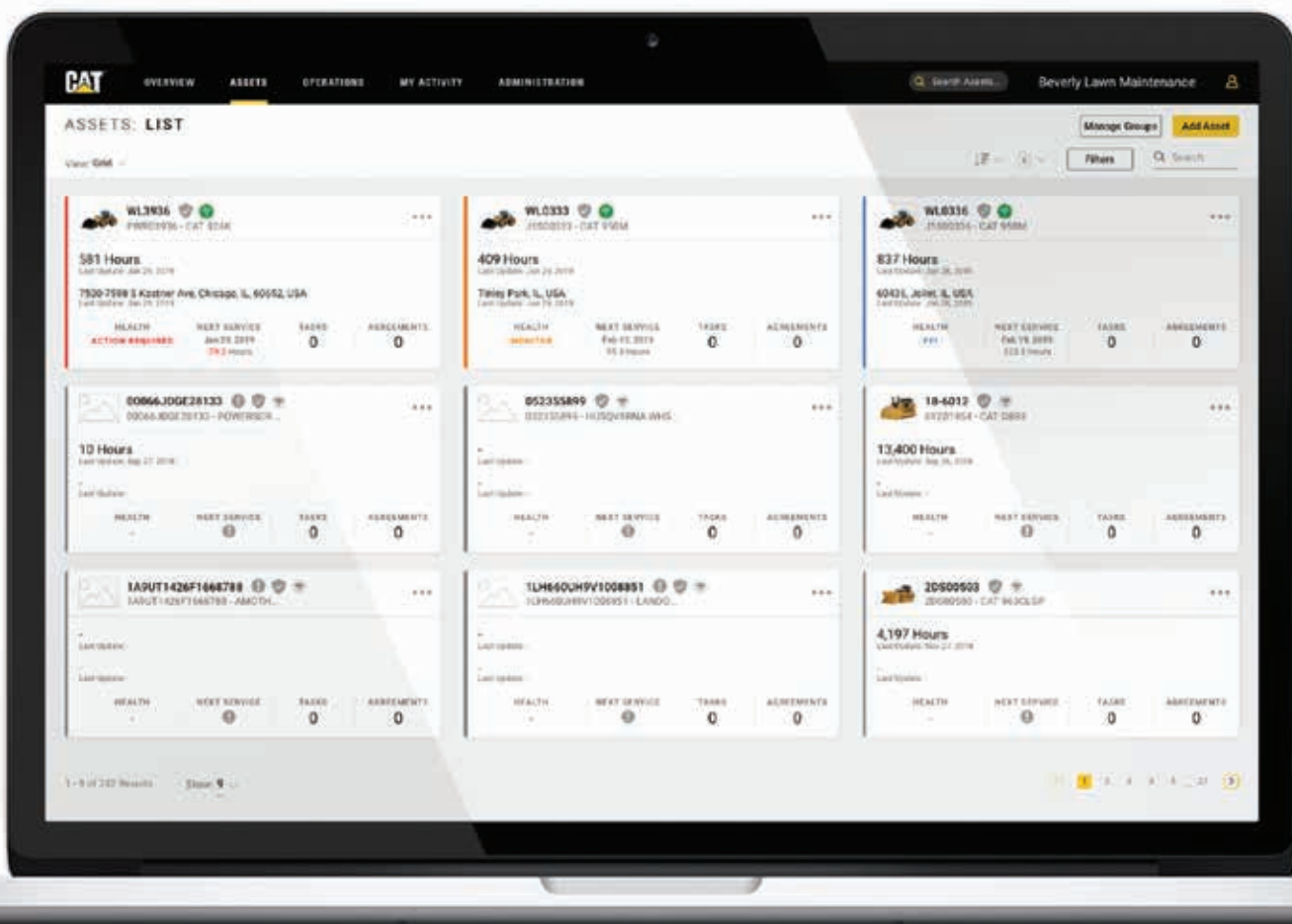
### Connect machines to telematics

Request and self-install PL542 Product Link boxes to connect and receive data insights.

### Access the telematics data of your full fleet

Use APIs to integrate telematics data from multiple Original Equipment Manufacturers.

**Visit the Apple App Store or the Google Play Store to download the app and then log in with your Caterpillar account. Click "Get Started" to sign up and enter equipment data into the app. Or, easily view and upload data on My.Cat.com.**



# MY.CAT.COM

## ONLINE HUB FOR YOUR EQUIPMENT INFORMATION

When you're online, My.Cat.Com makes it easy to track equipment, take action on alerts, order parts, schedule service and find more details about your assets. My.Cat.Com is the one place to access all of your equipment information with a single login.

### Keep maintenance on schedule

Share maintenance tasks with your team, mark work complete and adjust future schedules if needed.

### Monitor the condition of individual machines

Review your S•O•S<sup>SM</sup> Services fluid analysis results or Cat Inspect reports to identify the start of a problem before it becomes an equipment failure.

### Can't find your paper records or manuals?

Access Operation & Maintenance Manuals, support agreements, service letters, warranty information, invoices and more.

### Compare the performance of different machines or jobsites

Run utilization and benchmarking reports to determine

if you need to make adjustments to your fleet or operations.

### Ready to sell a piece of equipment?


Download a complete work order and service history to command a higher resale price.

### Customize how you see your information

Set up your home page to quickly access your most important and most used tools. Choose to view your assets in a table, in a grid or on a map—select an individual asset to view all details of its history.

### Create your my.cat.com account

If you're not already registered, go to My.Cat.Com and enter some basic information about your company and your equipment. As soon as our dealership verifies your account, you'll be able to access your equipment data.

*Caterpillar and our dealership are here to help you register and answer any questions you may have about how to use My.Cat.Com and the Cat App. *



# NEW 432 & 434 BACKHOE LOADERS TAKE CONTROL

## IMPROVE SAFETY. PREVENT ACCIDENTS. REDUCE COSTS.

Building on the success of the F2 Series, the new Cat® 432 and 434 Backhoe Loaders offer a redesigned operator control system that incorporates analog gauges with a color LCD display, which is soft-key controlled for simple navigation.

Both machines feature a C3.6 Stage V engine, optimal operator comfort and control, interactive display screens, a powershift transmission, an excavator-style boom, powerful and efficient hydraulics, power management modes, and Cat Product Link™.

Informational icon pop-ups offer quick navigation between operating modes, while full text diagnostic descriptions simplify machine troubleshooting and maintenance. The enhanced security system disables the engine, transmission and hydraulic system until a valid passcode is entered via the LCD operator control screen.

Pilot controls are available on the 434 as an option, and new seat-mounted controls that provide the operator with more comfort and control are standard on the 432.

### More fuel efficiency

The Cat C3.6 engine delivers up to 10 percent better fuel economy compared to the F2 Series engine. All models in the updated backhoe loader line feature standard 4-wheel drive with rear differential lock for improved traction in poor ground conditions.

Selectable power management modes offer the operator a choice of Economy Mode and Standard Mode for good engine performance and increased

fuel savings or Standard Plus Mode to boost machine performance by maximizing backhoe implement speeds. A new powershift transmission is available as an option on the 434 and standard on the 432. The new powershift enables easier on-the-go gear shifting for the operator.

Both models feature adjustable auxiliary hydraulic flow to the backhoe, so machine hydraulics can be fine-tuned to meet the operating specifications of attachments.

To increase machine utilization, the new Cat line can be equipped from the factory with optional Integrated Tool Carrier loader couplers (IT) for fast work-tool changes, or as a field-installed kit. These new backhoe loaders are compatible with F2 series attachments, eliminating the need to purchase new attachments, lowering operating costs.

Offering remote data monitoring through VisionLink®, Cat Product Link™ comes standard on these models to maximize machine uptime. Customers can customize machine operating data, such as fuel usage, payload summaries, scheduled service reminders and fault code alerts to meet specific needs for improved fleet management.

Operators can use the display screen to set their personal operator preferences, so they can work at a pace matched to application needs.

**To learn more about the new Cat 432 and 434 Backhoe Loaders, contact our dealership. **



# THE TRAXCAVATOR



## TRACK LOADER LINE EVOLVED FROM EARLY '50'S LAUNCH

A modern-day Cat® Track-Type Loader is capable of superior performance working in a wide range of tough jobs. From loading and carrying to digging and pushing, these modern-day loaders are some of the most versatile and productive machines on the jobsite. The compact frame allows for navigating in and around tight spaces, while the steel-track undercarriage makes it possible to work in soft, muddy and severe terrains.

Also known as a crawler loader, the Cat Track Loader line traces its roots back to the Trackson Company. Founded in Milwaukee, Wisc. in 1922, Trackson designed attachments for tractors of various brands. By 1936, the company was designing tractor equipment for Caterpillar, and within the next year, Trackson created a loader attachment specifically for Cat tractors that had the innovation of cable-operated vertical lift capabilities.

In 1948, collaboration between Caterpillar and Trackson engineers saw the development of the HT4 Trackson hydraulic shovel. This was an all-new hydraulic shovel-loader design, integrated with a D4 tractor. Then came HT2, HT6 and HT7 models. Caterpillar purchased Trackson Company in 1951 and adopted the "Traxcavator" name for all of its crawler loaders.

Caterpillar then began to design the loaders from the ground up rather than using attachments. The first integrated hydraulic crawler loader was released by Caterpillar in 1952, and was known as Shovel No. 6 Traxcavator. It was advertised as a rugged machine for

land clearing, digging, grading, truck loading, slope work and more. Made for tough jobs, rough ground and tight spaces, it saved time and money.

It was an immediate success and spurred further development within the loader division. At this juncture, Caterpillar decided that both tracked and wheeled loaders needed their own number series (900) to differentiate them from standard track-type tractors. Based on this change, next off the production line were the 933, 955 and 977 models.

During the 1960s, a variety of work tools were developed to further enhance the versatility of Traxcavators. In the 70s, the Track Loader line included six sizes: 931, 941, 951, 955, 977 and 983, ranging from 15,550 lb (7t) to 76,000 lb (34t) and from 1- to 5.5 cubic-yard buckets.

In 1981, Caterpillar reinvented track loaders with a complete revolution: a rear engine platform with hydrostatic transmission, oscillating undercarriage, z-bar linkage and tilting cab. This game changer was issued in four models: 943, 953, 963 and 973.

Still based on the same optimized concept, present-day Cat Track Loaders are sturdier than ever with significantly better performance and operator comfort than their predecessors. The latest series comes with a new electronic architecture that enables the addition of future technology packages such as Payload measurements, Grade Assistance and Remote Control. 🚧



# ROAD TO RECOVERY

*Cambridge Shores subdivision at Kentucky Lake*

## **A COMMUNITY RALLIES AFTER DEVASTATING TORNADO**

On December 10, 2021, the deadliest tornado outbreak on record for December rumbled across the mid-South, leaving widespread destruction and human suffering in its path. More than 15,000 buildings were destroyed, and 74 people died.

A violent EF-4 tornado began in far northwest Tennessee, and moved across Western Kentucky. Cutting a wide swath from southwest to northeast, the Tri-State tornado was on the ground for more than 125 miles.

The tornado continued northeast through Mayfield, Ky., where it produced widespread destruction that night. According to current estimates, 23 people died and 225 were injured in Graves County (Mayfield is the county seat). An estimated 50 percent or more of the historic downtown was destroyed, while eight people died at the Mayfield Consumer Products candle factory after being trapped when the building collapsed.

### **Search and rescue operation**

In the immediate aftermath, emergency responders worked to clear roads and sort through the twisted rubble at the candle factory as they searched for survivors.

Crews from Jim Smith Contracting in Mayfield brought in equipment on lowboys to sort through twisted metal at Mayfield Consumer Products and assist a search and rescue team from Lexington. After what turned out to be the last survivor was pulled from the collapsed structure at 12:30 a.m., the search continued.

Jay Smith, an executive vice president with Jim Smith Contracting, determined that the safest, most effective method to cut through the wreckage was with a MP324 Demolition Jaw attached to a Cat® excavator.

"We called Boyd Cat and they had one in Louisville," Smith said. "I said, 'Whatever you guys have to do, get that thing here. And by 7:30 a.m., here comes a lowboy with a Cat 323 Excavator equipped with a set of shears."

"We were able to cut through the wreckage from ground level, making advancement go much quicker and safer," Smith said. "You don't want to go from the top—the metal building was completely sandwiched on top of itself and there was a belief that people were still trapped inside."

In a critical situation where every second counts, Smith appreciated the prompt, no-questions-asked response from his Cat dealer.

"I didn't have to sign anything," Smith said. "They knew the situation. They knew I was running the line and they jumped on it. When the machine arrived it had a full tank of fuel and was ready to work."

Even though no more survivors were found, the arrival of the Cat 323 lifted the spirits of those involved in the search.

"I'll never forget, when the firefighters and all the EMS guys saw that machine coming over the hill they were smiling," Smith said. "It was just a little moment of joy in what was a very tumultuous time. I could see it in every one of my guys' eyes. We were thinking if

**“There was never a time in my life that I thought I would be in downtown Mayfield running an excavator, grabbing cars, picking them up with a small excavator and just literally slinging them to the side just to get one lane open to clear a path for the school buses. It was an absolute madhouse.”**



– **JASON BUCKMAN**  
Branch Manager  
Boyd Cat, Paducah, Ky.



somebody’s in there that we can get to Christmas, we’re gonna do it—we’re going to find whoever is in there and get them out.”

### **Downtown destruction**

After it leveled the candle factory, the tornado intensified even further, reaching high-end EF4 intensity as it tore directly through the center of town, resulting in catastrophic damage throughout Mayfield’s historic downtown square. Multiple large, well-built, multi-story brick buildings completely collapsed. Only large piles of bricks and lumber remained in the hardest-hit portions of the downtown area, and streets were literally buried under debris.

As a captain on the Mayfield-Grace fire rescue team, Jason Buckman was one of the first to respond. The branch manager of Boyd Cat in Paducah found himself clearing a path through downtown Mayfield with a Cat® 308 CR Mini Excavator so that four school buses carrying residents of a retirement home could pass through and be carried to safety. He was trailed by Boyd Cat delivery driver Mike Griggs, who was clearing debris in the road with a Cat 299D Compact Track Loader.

“We were clearing telephone and stoplight poles because they were laying across the street along with bricks from the buildings that were strewn everywhere.” Buckman recalls. “There was never a time in my life that I thought I would be in downtown Mayfield running an excavator, grabbing cars, picking them up with a small excavator and just literally slinging them to the side just to get one lane open to clear a path for the school buses. It was an absolute madhouse.”

The post office, city hall, fire station, and police station were also significantly damaged or destroyed. The

historic Graves County Courthouse had much of its roof torn off and its clock tower collapsed, while some of its exterior upper-floor walls were knocked down.

“This is just bricks and mortar for me,” said Jesse Perry, judge executive for Graves County, with his former office in the 1890s-era courthouse in the background. “These buildings can be cleaned up. They can be put back better and stronger and built to last, but preserving our humanity is the most important priority at a time like this.

“I feel that we’re a very strong, tight-knit community, and we’ve shown that,” Perry said. “This event has brought families back together and attracted a lot of outside help from people who understand that we need to take care of our brothers and sisters. I can name many organizations, such as Samaritan’s Purse, Mercy Chefs or Boyd Cat that have been a big help.”

Perry credits a district sales and rental rep at Boyd Cat in Paducah for provisioning a Cat Telehandler at the Graves County Fairgrounds to assist with unloading supplies for the relief effort.

“I called Rob Browning and said ‘Hey, man, we need some equipment out here to help,’ and it wasn’t how many ever hours later I can see the telehandler coming in. And that right there shows me that the people at Boyd Cat care about their community. It was a blessing for us to be able to get those supplies unloaded immediately.”

The response to the disaster included assistance from federal and state agencies, as well as donations from the Salvation Army and World Vision. To assist with the cleanup effort, a Caterpillar field representative was able

*(Continued on page 12)*

**“We called Boyd Cat and they had one in Louisville. I said, ‘Whatever you guys have to do, get that thing here.’ And by 7:30 a.m., here comes a lowboy with a Cat 323 Excavator equipped with a set of shears.”**



– JAY SMITH  
Executive Vice President  
Jim Smith Contracting



*Crews sort through the rubble at the Mayfield candle factory.*

to procure 12 Cat 299 D3 Series Compact Track Loaders that were quickly made available to local contractors.

“This is a community where everybody helps everybody, and the help came from everywhere,” Buckman said. “Every farmer that owned an excavator or a dozer, every contractor even though they were on another job, they were loading up their equipment and they were heading to Mayfield.”

### **Rental power response**

When the storm knocked out grid power to the area, calls started coming into Boyd Cat seeking rental power to keep critical operations running. One of the first calls came from Mayfield Electric & Water Systems, which required power to keep sewer and water lines running.

Mobile power was also needed by banks and cleanup crews.

“Everybody was without power,” recalls Jacob Locke, a field technician with Boyd Cat in Paducah. “The tornado was a mile wide and took out a big area. A whole lot of people were without power, and some places like the utility company and Mayfield Grain ran on generator power for quite awhile.”

Just southwest of the downtown area, the Mayfield Grain Company took a direct hit. The tornado tore the roofs off of grain bins. Buildings were unrecognizable as the structures were in pieces, and a semi full of grain was thrown on its side.

With expertise in salvage operations for grain elevators damaged as a result of fire, explosions and storms,



**“This is just bricks and mortar for me. These buildings can be cleaned up. They can be put back better and stronger and built to last, but preserving our humanity is the most important priority at a time like this.”**

– **JESSE PERRY**  
Judge Executive  
Graves County, Ky.



Memphis-based Callan Salvage & Appraisal was called in to minimize the loss of a valuable commodity.

To run its specialized equipment, which includes augers and conveyers, Callan required continuous power, which was not available from the grid in the aftermath of the storm.

“We have to keep this equipment running because we’re loading up to 100 trucks a day,” says owner Ron Callan. “We had about 15 men and all of this equipment on site, so we can’t afford to not have these people working because it’s costing us money.”

Callan called on Boyd Cat to provide four rental power units ranging in size from 30-, 60-, 100- and 500 kW. One of the generators was used to run the conveying system under the grain elevator which loaded semi-trucks. Another generator was used to power portable augers that cut holes in the bottom of the damaged bins. Meanwhile, another Cat rental generator provided power to the scales for weighing grain, as well as a temporary office that was set up.

Running from January 2 until the end of May, Callan Salvage & Appraisal saved 7,600 trailer loads of grain, each weighing approximately 20 tons. The salvage operation saved more than \$30 million worth of grain, Callan said.

“I don’t know how many generators we run a year, but we rent a lot, and it’s always Cat power,” Callan says. “Our job is to get the grain out and keep it in the best condition we can. We use the generators to run all of our equipment, so we can do the blending and retrieve it as fast as possible.

“We travel all over the world—we’ve even shipped generators with our equipment to South America on a couple of occasions—and it’s very important that we have reliable power,” Callan continues. “We will not use anything other than Cat generators because we know how dependable they are. And if we have problems, we can call a Cat dealer and they can come out and fix it or replace it, or do whatever needs to be done.

Callan Salvage & Appraisal reduced the loss for the grain elevator and the insurance company by up to 70

percent,” Callan said. “We saved them that much, which made the insurance company very happy.”

As a heavy highway contractor, Jay Smith found himself about a quarter of a mile away from where his dad’s firm constructed a freeway interchange when he worked on the rescue operation at the candle factory.

“We stepped out of our wheelhouse a little bit to run down there,” Smith said. “But the thing about Western Kentucky is there are so many little towns, but we’re all one community and we all work together. So if something happens in Mayfield—I went to Paducah Tillman High School and Mayfield is our biggest rival—but it doesn’t matter. You go down there and you help your neighbors.”

Perry says the cleanup and recovery in Mayfield will take years, but he remains optimistic about the community’s ability to recover.

“Every day we’re making progress, and I feel really good about what Mayfield will look like in the next year or two.” 🍷



*Salvage operation at Mayfield Grain.*



# 953/963 **TRACK LOADERS**

## **THE FIRST MACHINE ON THE JOB AND THE LAST TO LEAVE**

Your Cat® 953 or 963 Track Loader can be the first machine on the job and the last to leave—no other single machine can do as many tasks as a crawler loader. Traction and flotation mean you can work when and where others cannot, such as in wet, soft or rocky conditions.

Save money and transport time with one rugged machine that does it all—land clearing, backfilling, grading, excavating, truck loading, slope work and more. Cat crawler loaders give you lower ground pressure and better traction so you can start jobs sooner, and work longer in all kinds of underfoot conditions. You'll also benefit from outstanding performance and fuel efficiency.

### **Equipped for your Jobs**

Track loaders are second to none when it comes to versatility, agility and the ability to work in tight spaces. And when our jobs have specific demands, these four purpose-built track loaders are up to the challenge:

- Waste Handler
- Low Ground Pressure
- Ship Hold
- Steel Mill

### **Low Ground Pressure**

When you need even more flotation and traction, or are working in more sensitive ground conditions, choose the Low Ground Pressure (LGP) package. The wider tracks provide added ground contact area, giving you lower ground pressure and better flotation. The wider tracks also add to machine stability for slope work.

### **Heavy-duty Waste Handler**

The Waste Handler configuration is a versatile machine for loading, sorting, excavating and spreading cover material, and is well suited to landfills or transfer stations. Specialized guarding, striker bars and seals help protect the machine and components from impacts and debris. An Enhanced Cleaning Package reduces cleaning time, adds machine protection and increases compaction.

Take on a variety of tasks in a landfill or transfer station. Push, shred and compact waste. Create and maintain access, dig cells and handle cover material.

Factory-equipped guarding and seals help protect the machine, undercarriage and cooling system. Choice of buckets and track shoes permit you to further optimize the machine for greater performance and service life.

### **Cleanout and compaction**

Wide-gauge undercarriage and standard-width tracks help reduce debris buildup for easier cleaning. Added weight, plus narrower track shoes, increase ground pressure for greater compaction.

### **Go to Extremes**

For tougher tasks like demolition and transfer stations, choose an Extreme Service package with even more guarding and screens to help protect the windshield from breakage and debris.

***To learn more about the versatile Cat 953 and 963 Track Loaders, contact our dealership. ☎***



# CAT<sup>®</sup> SAFETY

## SIX STEPS FOR SAFE LOCKOUT/TAGOUT

Lockout/Tagout is the easy process of applying a lock and/or a tag to block the flow of energy from a power source to a piece of equipment, thereby preventing unexpected equipment startup during repairs, service or maintenance.

Every employee needs to be vigilant on Lockout/Tagout procedures to prevent accidents and injuries. According to OSHA, craft workers, machine operators, and laborers are among the three million workers who service equipment and face the greatest risk. Compliance with the standard (29 CFR 1910.147) prevents an estimated 120 fatalities and 50,000 injuries each year. Workers injured on the job from exposure to hazardous energy lose an average of 24 work days required for recuperation.

To help ensure the safety of your service technicians, operators and maintenance personnel, always be sure to follow procedures specified by OSHA for proper Lockout/Tagout on your jobsites and in your repair facilities.

At the outset, be aware of these energy sources:

- Mechanical
- Thermal
- Chemical
- Pneumatic
- Hydraulic
- Fuel and gas
- Gravity
- Electrical
- Water under pressure

### Six steps for safe Lockout /Tagout

1. Prepare for shutdown by knowing the type and amount of energy, its hazards and how to control it.
2. Follow normal, established procedure as specified in the Caterpillar Operation and Maintenance Manual for machine and equipment shutdown.
3. Turn off the energy at the main power source.
4. Affix /apply lock out devices and/or tag outs to all energy sources involved.
5. Release any residual or stored energy.
6. Verify the isolation by attempting to restart the machine, reading gauges, or using test equipment. Return operating controls to the off position.

Four steps for safe release from Lockout/Tagout

1. Inspect machines and equipment for non-essential items, remove machine guards and ensure machine is operationally intact.
2. Conduct a headcount of personnel and remove any employees from the machine and safely position employees away from the area.
3. Remove the Lockout/Tagout device.
4. Notify all affected personnel that Lockout/Tagout has been removed.

Don't count on luck, count on the lock. Protect yourself and your team from unintentional exposure to all types of hidden energy.

***For more information about safe Lockout/Tagout procedures and other machine maintenance safety procedures on your jobsite, contact the equipment experts at our dealership or consult OSHA standard 29 CFR 1910.147. ***

# HIGH DRIVE. A HIGHER LEVEL OF PERFORMANCE.

## ELEVATE YOUR PRODUCTIVITY WITH THE NEW CAT® D7 DOZER

Nothing says “Cat® dozer” like high drive undercarriage. It performs better and lasts longer on tough jobs, and it’s just one way the new D7 delivers a higher level of performance. The others? Added power, weight and blade capacity that combine to move more material. Automatic shifting and a standard-setting cab that make operation simple and comfortable. And technology options that can raise your productivity up to 50%. You—and your profits—will be riding high in this new dozer.

Find out more at [URL](#).

