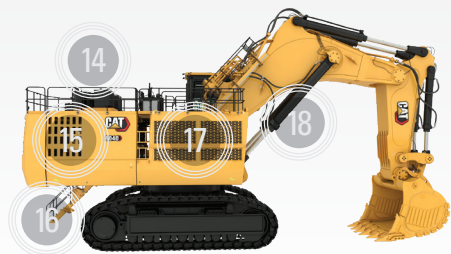
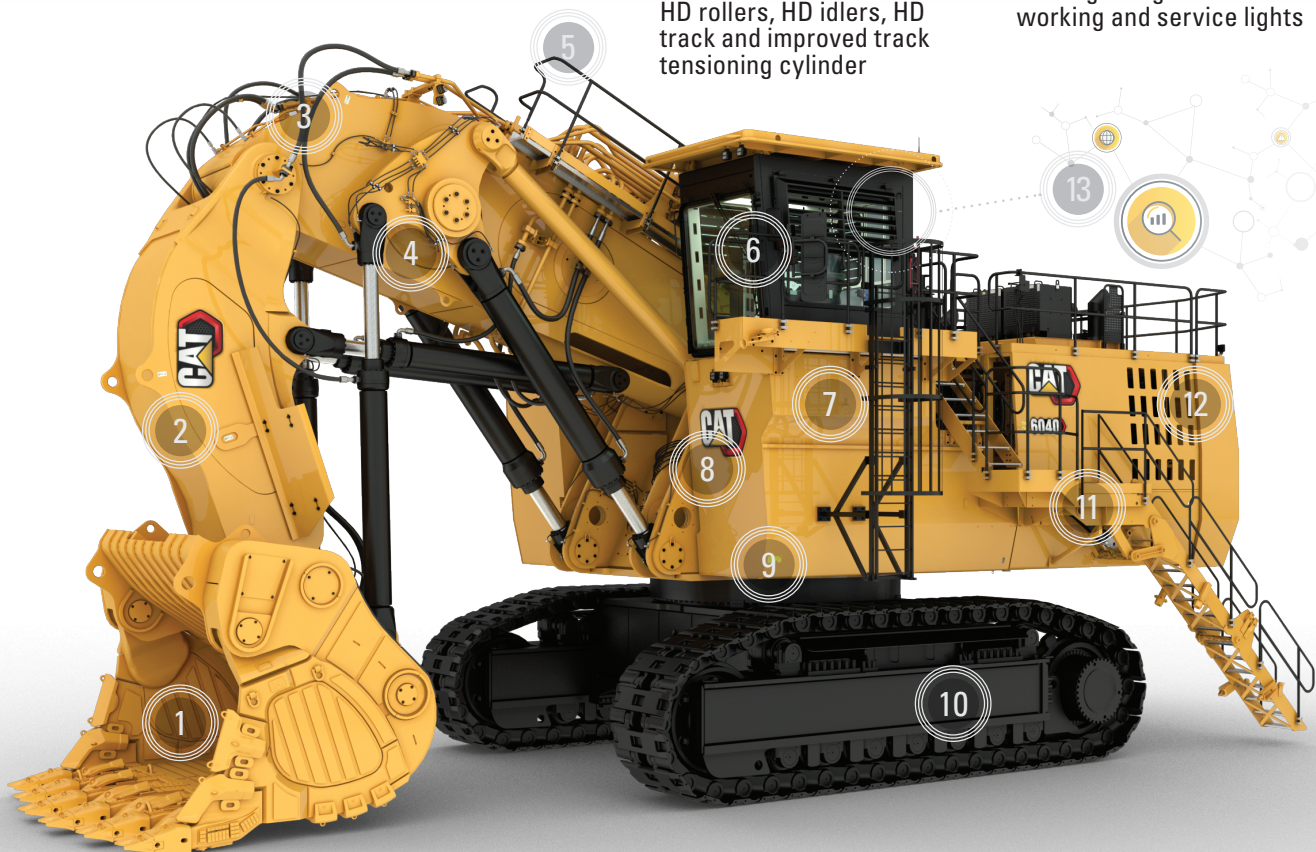


THE NEW CAT® 6040 HYDRAULIC MINING SHOVEL (HRC VERSION)

**THE PRODUCTIVITY
YOU DEMAND.
THE DURABILITY
YOU EXPECT.**



1. Productive and durable buckets equipped with a wear protection package of choice
2. Robust Face Shovel stick design
3. Durable boom with energy-efficient boom-lowering float valves
4. Safe and efficient TriPower™ system
5. Safety features designed in accordance with mining safety best practices
6. Comfortable and productive operator's cab with large, color touchscreen and optional dual HVAC
7. Cab riser module with emergency egress ladder
8. Updated product identity
9. Durable superstructure
10. Integrated carbody and crawler frames with Cat® HD undercarriage, HD rollers, HD idlers, HD track and improved track tensioning cylinder
11. Safe access and egress with powered 45° access stairway
12. New engine module with two Cat C32 engines, optimized hydraulics and hose routing. Meets U.S. EPA Tier 4 Final / EU Stage V emission standards
13. Connects to Cat MineStar™ Solutions with new Product Link™ Elite and cellular or satellite radio options
14. New Cat Type 4 air filters and pre-cleaner dust ejection system, sized to improve air filter overall life
15. Integrated mainframe, new Power Module and Counterweight
16. Easily accessible ground-level service station
17. Oil cooler module with fully independent oil cooling system, with continuous hydraulic oil filtration
18. LED high-brightness working and service lights



**THE NEW CAT® 6040
HYDRAULIC MINING
SHOVEL (HRC VERSION)**



2,079 hp / 1550 kW
ENGINE OUTPUT

BACKHOE: **44 t / 40 mt**
FACE SHOVEL: **44 t / 40 mt**
BUCKET PAYLOAD

BACKHOE: **449 t / 407 mt**
FACE SHOVEL: **446 t / 405 mt**
OPERATING WEIGHT



HEAVY DUTY UNDERCARRIAGE

- » Designed and built specifically to withstand the rigors of any digging environment, new HD undercarriage extends service life by up to 30%.
- » Heavy duty rollers and idlers improve performance, increase wear life, reduce internal friction and overheating, and eliminate grease consumption and lines.
- » Heavy duty track group handles high field loads and reduced pitch extension wear increases track chain life by 20% to 40%.



SERVICEABILITY

- » Easy access and inspection of Cat Type 4 air filters on top deck.
- » Better organized hoses and components.
- » Integration of Cat hoses and couplings, which offer industry-leading reliability and performance, with the ability to source locally using all Cat materials.
- » Service station that provides easy access to functions such as coolant, hydraulic oil, slew gear box oil, grease, and diesel and engine oil.
- » Reduced maintenance downtime thanks to exchange intervals for engine oil and engine filters that have been increased from 500 to 1,000 hours.
- » Highly regulated C32 engines that utilize a Diesel Oxidation Catalyst (DOC) solution, which is maintenance free and does not require DEF. This saves time and cost during refueling and maintenance.
- » Lesser regulated engines available.
- » Product Link Elite hardware, onboard machine controllers and software, which enable the collection and transmission of machine electronic data to locally hosted or cloud-hosted applications.
- » Unique twin engine concept, which simplifies and expedites troubleshooting, generating more uptime and more productivity.

ENGINES

- » Durable Cat C32 engines, which offer unsurpassed performance and have been proven to withstand the challenging conditions found at mine sites across the globe.
- » High power output and proven reliability.



SAFETY

- » Emergency egress ladder located in direct proximity to the cab.
- » Anti-slip walkways and a 45-degree angled stairway allow for safe access and egress.
- » Safety glass in all windows and armored windshield protect operators.
- » Five emergency shut-off switches, with one easily accessible in the cab to shut down the electrical system in case of emergencies.



PEDJ1044

© 2022 Caterpillar. All Rights Reserved. CAT, CATERPILLAR, LET'S DO THE WORK, their respective logos, "Caterpillar Corporate Yellow", the "Power Edge" and Cat "Modern Hex" trade dress as well as corporate and product identity used herein, are trademarks of Caterpillar and may not be used without permission.