

340

HYDRAULIC EXCAVATOR



Net Power – ISO 9249
Operating Weight
Maximum Digging Depth

258.3 kW (346 hp)
36 800 kg (81,200 lb)
7480 mm (24.5 ft)



340

HYDRAULIC EXCAVATOR

With up to 10 percent more productivity than the model it replaces, the Cat® 340 is the best in its class for moving tons per hour. Add in the excavator's low owning and operating costs and you will profit like nobody's business.



UP TO 10% MORE PRODUCTION

More engine power, wider undercarriage, and heavier counterweight enable bigger payloads and best-in-class production.

LOW OWNING & OPERATING COSTS

Industry-leading fuel efficiency, long-life filters, and easy-access service points reduce downtime for increased production.

EASY-TO-USE CAT TECHNOLOGY

Available technology makes work simpler, safer, and more efficient.

LATEST FEATURES



Cab Monitor Improvements

1. Continuously improved user interface allows for intuitive navigation, minimizing performance interruption with the easy-to-use touchscreen menu.
2. Identify apps quickly with a grid list view, abbreviated app names, and categorized menu options.
3. A new notification center keeps important information visible to the operator, and displays messages without shrinking the camera view.
4. Color coded notifications set critical messages apart from the rest.
5. Use the in-monitor QR code to learn about machine technology and features through a full suite of "how-to" videos.

Operator Coaching

1. Operator Coaching is an in-cab system that recognizes specific opportunities for operators to be more productive and prevent unnecessary machine wear and tear.
 2. After detecting inefficient or restricted actions, the system alerts the operator and provides insight into the inefficiency and steps to improve.
 3. Paired with a VisionLink® Productivity subscription, this information and other Operator Coaching insights can be viewed from anywhere.
- Standard integrated vehicle health management system alerts the operator with service guidance and parts needed to enhance uptime.
 - Enhance visibility to make service work easier and safer with optional inspection lighting.

Not all features are available in all regions. Please check with your local Cat dealer for specific offering availability in your area. Build Number: 08C



HIGH PERFORMANCE

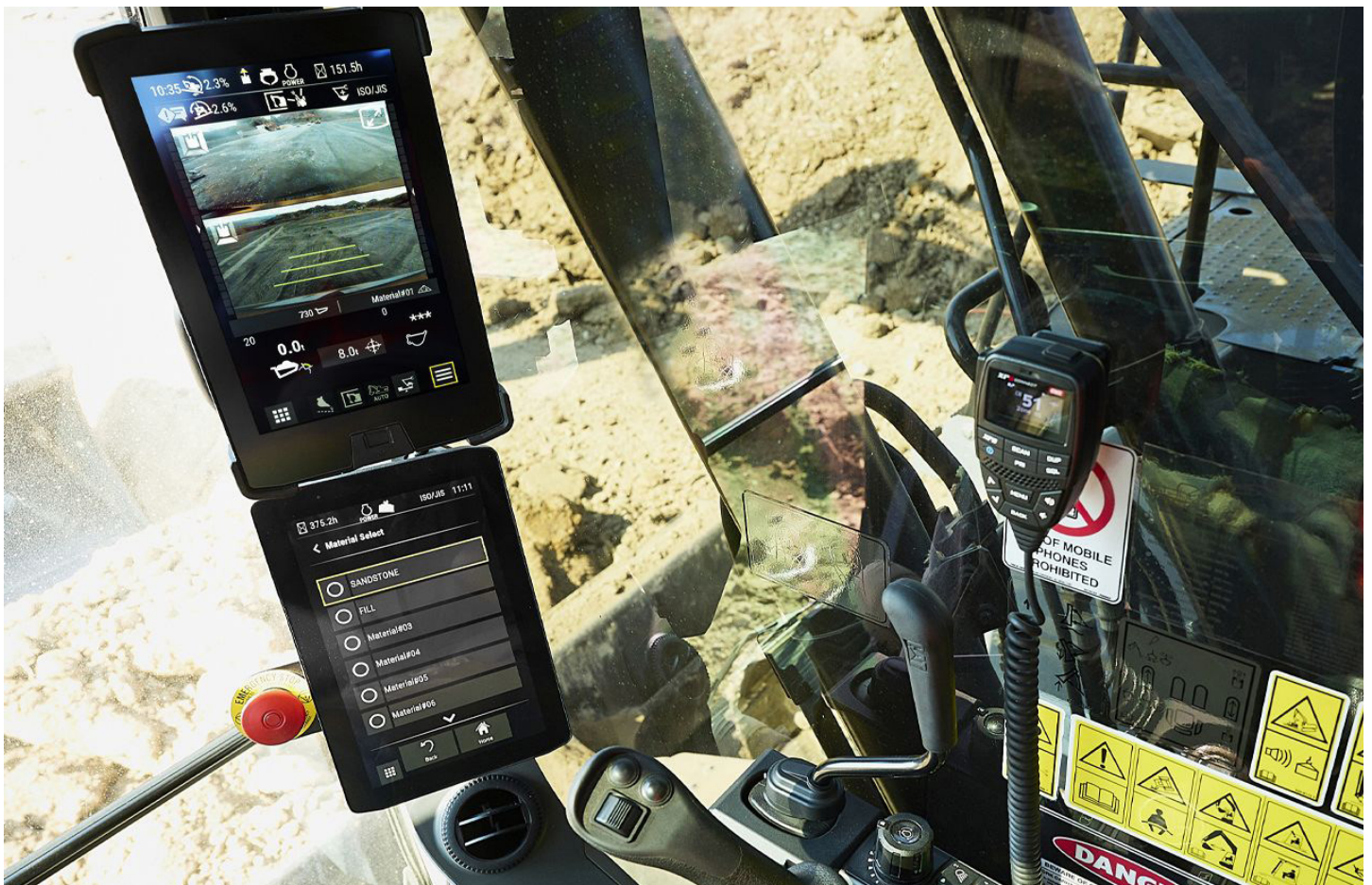


- The C9.3B engine generates more power than the 2020 model year 336 engine.
- More power to the pumps, wider undercarriage, and heavier counterweight enable up to 10 percent more productivity.
- Match the excavator to the job with three power modes – Power, Smart, and Eco. Power mode is maximum power all the time. Smart mode automatically matches engine and hydraulic power to digging conditions, providing maximum power when needed and reducing power when it isn't to help save fuel. Eco mode reduces engine speed and keeps it constant to reduce fuel consumption.



EFFICIENCY THROUGH TECHNOLOGY

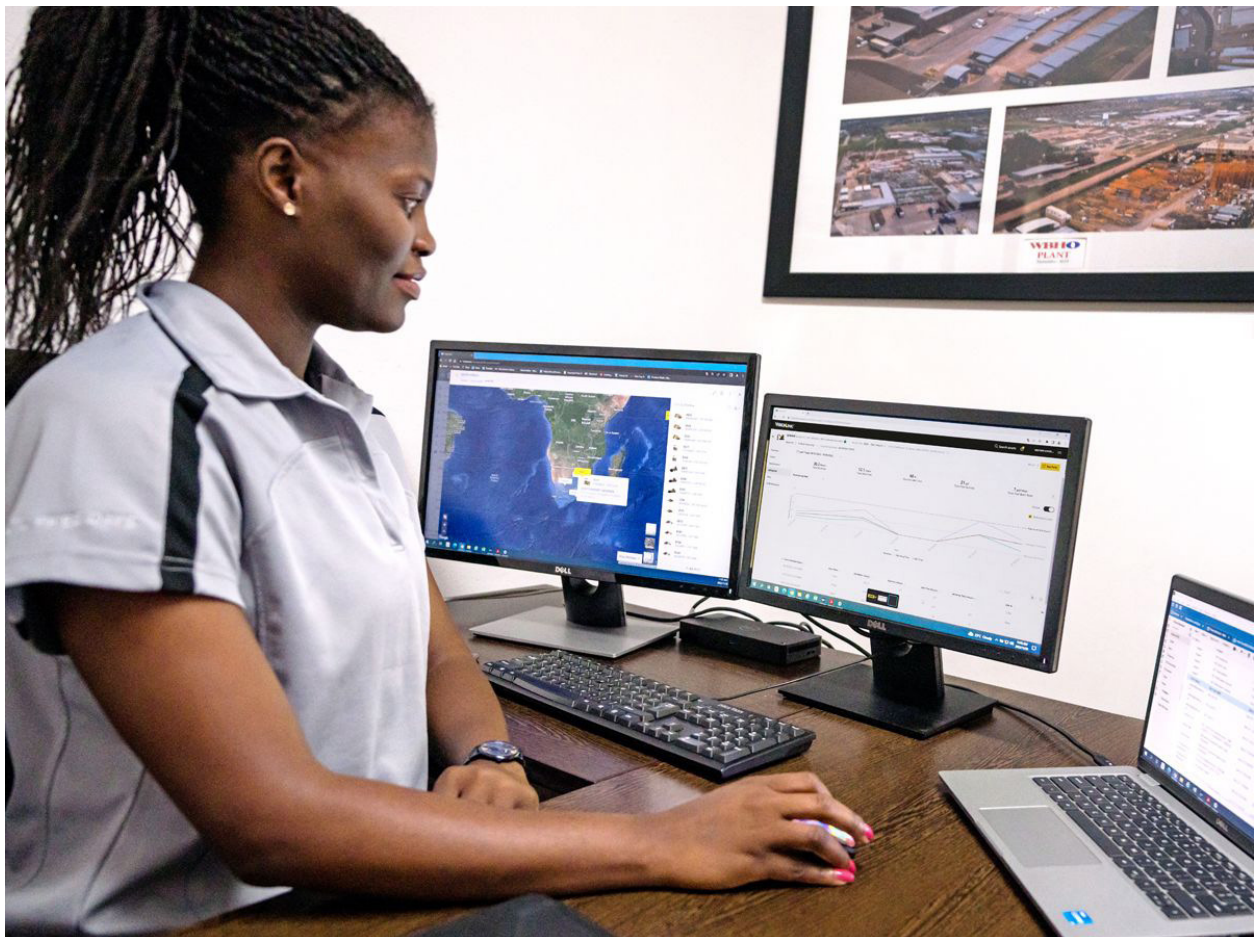
- Boost productivity up to 45% versus traditional grading with optional Cat Grade with 2D system – includes indicate-only and laser capability.
- Want a 3D system to improve your digging results? Caterpillar single antenna global navigation satellite system (GNSS) makes it easy by giving you visual and auditory guidance to grade. Plus, you can create and edit designs on the touchscreen monitor while you're on the job. If your application calls for a dual antenna system, it's easy to upgrade.
- Upgrade to our dual antenna GNSS for maximum grading efficiency. The system lets you create and edit designs on the touchscreen monitor while you're on the job, or you can have the plan design sent to the excavator to make your work easier. Plus, you get added benefits of avoidance zones, cut and fill mapping, lane guidance, and augmented reality along with advanced positioning capability.
- Optional Grade Assist helps you stay on grade – simply and effortlessly – with single-lever digging.
- Dig with guidance to depth, slope, and horizontal distance to grade. You can set up to four different depth and slope targets to help save time and money.
- Automatically stop excavator swing at operator-defined set points in truck loading and trenching applications with optional Swing Assist.
- Cat Payload helps you achieve precise load targets to improve your operating efficiency. Pick up a load of material – with a bucket and thumb combination or grapple and clamshell attachments – and get a real-time weight estimate without swinging.
- Combine Payload with VisionLink and remotely manage your production targets.
- Operator Coaching is an in-cab system that recognizes specific opportunities for operators to be more productive and prevent unnecessary machine wear and tear.



TAKE THE GUESSWORK OUT OF MANAGING YOUR EQUIPMENT

- VisionLink provides actionable data insights for all assets – regardless of fleet size or equipment manufacturer.* Review equipment data from your desktop or mobile device to maximize uptime and optimize assets. Dashboards provide information such as hours, miles, location, idle time, and fuel utilization. Make informed decisions that lower costs, simplify maintenance, and improve safety and security on your jobsite.
- VisionLink Productivity gathers and summarizes machine telematics and jobsite data from all your equipment – regardless of the manufacture.* View actionable information such as idle time, fuel burn, location, payload, load counts, total cycles, and more to improve machine efficiency, productivity, and utilization. Access data anywhere via a mobile, tablet, or desktop device – on or off the jobsite.
- Cat® Inspect is a mobile application that allows you to easily perform digital preventative maintenance (PM) checks, inspections, and daily walkarounds. Inspections can easily be integrated with other Cat data systems like VisionLink so you can keep a close eye on your fleet.
- Remote Troubleshoot is a mobile application that allows your Cat dealer to perform diagnostic testing on your connected machine remotely to help ensure that issues are resolved quickly and with less downtime.
- Remote Flash is a mobile application that allows you to update onboard software without a technician being present, allowing you to initiate software updates when convenient, increasing your overall operating efficiency.
- The Cat PL161 attachment locator allows you to track attachments across all worksites, reduce the number of lost attachments, and plan for attachment maintenance and replacement. The work tool recognition feature automatically adjusts machine settings based on the selected tool.

****Data field availability can vary by equipment manufacturer.***



BUILT FOR RUGGED CONDITIONS



- Reinforced structures ensure long-term durability in harsh environments.
- Work up to 4500 m (14,764 ft) above sea level.
- Standard high-ambient temperature capability is 52° C (125° F) with cold start capability at -18° C (0° F).
- An optional battery-operated engine heater enables starting at -32° C (-25.6° F).
- Auto hydraulic oil warmup gets you to work faster in cold temperatures and helps prolong the life of components.
- Two levels of filtration protect the engine from low-quality diesel fuel.
- Grease sealed between track pins and bushings reduces travel noise and prevents debris from entering to increase undercarriage life.

WORK IN COMFORT

- Choose between Essential and Deluxe cabs – both with automatic climate control.
- Deluxe cab comes with heated seat to keep you warm and tilt-up left console to enable easy entry and exit.
- Control the excavator comfortably with easy-to-reach controls all located in front of you.
- Stow your gear with plenty of in-cab storage beneath and behind the seat, overhead, and in the consoles.
- Use the standard radio's USB ports and Bluetooth® technology to connect personal devices and make hands-free calls.



SIMPLE TO OPERATE



- Start the engine with the push of a button; use a Bluetooth key fob or Operator ID passcode.
- Program each joystick button, including power mode, response, and pattern, using Operator ID; the machine will remember what you set each time you go to work.
- Trouble cutting through tough material? Optional auto dig boost gives you an automatic power increase of 8 percent when you need it for better bucket penetration, shorter cycle times, and greater payloads.
- Need more lift during your shift? Optional auto heavy lift gives you 8 percent more power exactly when you need it for as long as you need it.
- Make moving the excavator much easier with optional Cat Stick Steer. Simply push a button and use one hand to travel and turn instead of both hands or feet on levers or pedals.
- Cat continues to improve user interface functionality for operators of all skill levels. The touchscreen monitor is an easy-to-use operating tool that presents the jobsite dashboard with an intuitive format. Productivity applications are displayed in grid-view to read on-the-go, and touchscreen navigation is programmed to make sure job performance continues without any hold ups.
- Make operating easier with the touch of a joystick button. Additional auxiliary relays allow you to power on or turn off a CB radio, beacon light, and even a dust suppression watering system without taking your hands off the joysticks.
- Protect your hammer from overworking. Auto hammer stop warns you after 15 seconds of continuous firing and then automatically shuts it off after 30 seconds – all to prevent wear and tear on the attachment and excavator.
- Not sure how a function works or how to maintain the excavator? Always have the operator's manual at your fingertips in the touchscreen monitor.

SAFETY

- 2D E-Fence prevents the excavator from moving outside of operator-defined set points; the system works with thumb and bucket combinations along with hammer, grapple, and clamshell attachments.
- The Rollover Protective Structure (ROPS) cab meets industry standards and protects the operator in the event of a rollover.
- Enjoy great visibility with the help of narrow cab pillars, large windows, and a flat engine hood design.
- Make service work easier and safer with optional inspection lighting. With the flip of a switch, lights will illuminate the engine, pump, battery, and radiator compartments to enhance visibility.
- Optional Cat Lift Assist helps you avoid tipping by letting you know if your load is within the excavator's safe working range.
- A travel direction indicator helps you know which way to activate travel levers.
- Enhance jobsite safety. Add a swing alarm to alert people when you're rotating from trench to stockpile and back again.
- Keep your excavator secure with Operator ID. Use your PIN code on the monitor to enable the push button starting feature.
- A ground-level shutoff switch stops all fuel to the engine when activated and shuts down the machine.
- Serrated steps and anti skid punch plate on the service platform help prevent slipping.
- A rearview camera is standard.



EASY MAINTENANCE



- Boost productivity with proactive service reminders. Our integrated vehicle health management system alerts the operator with step-by-step service guidance along with parts needed so you don't experience any unnecessary downtime.
- Expect less maintenance cost due to 1,000 hour engine oil intervals.
- Change all fuel filters at a synchronized 1,000 hours. Filters are grouped and located on right-hand side of machine for easy maintenance.
- Check hydraulic system oil and easily drain fuel system water and fuel tank water from ground level.
- The air intake filter with pre-cleaner has high dust holding capacity.
- The hydraulic oil filter provides superior filtration; anti-drain valves keep oil clean when the filter is replaced.
- The high-efficiency hydraulic fan has an optional automatic reverse function to keep cores free from debris, eliminating the need for any operator interaction.
- Scheduled Oil Sampling (S-O-SSM) ports are on ground level, simplifying maintenance and allowing for quick, easy extraction of fluid samples for analysis.

INCREASE YOUR PRODUCTIVITY AND PROFIT

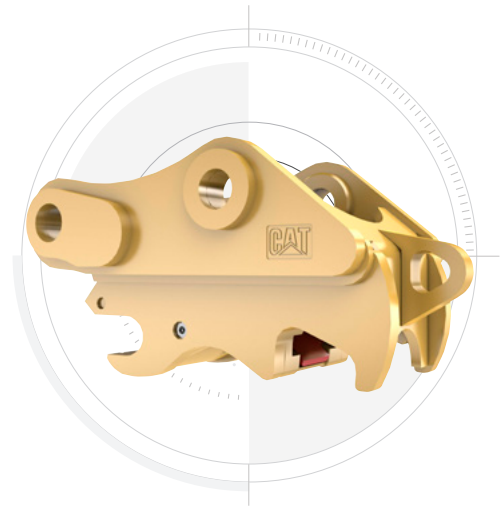
Expand the performance of your excavator with a variety of Cat attachments. Each is designed to maximize the machine's capability of moving material quickly and efficiently.

BUCKETS



Cat buckets and teeth can cut through the toughest material.

COUPLERS



Cat quick couplers let you change between tools in minutes, making the machine much more versatile.

HAMMERS AND MORE



Whether it's breaking rock, cutting steel, or grabbing and loading material, Cat hydromechanical attachments can help you do more work to make more money.

AUTO HAMMER STOP PREVENTS WEAR AND TEAR

Turn on through the monitor and your hammer will automatically stop after 30 seconds of continuous firing. This prevents the tool and excavator from overworking, enhancing the service life of both.

TECHNICAL SPECIFICATIONS

Engine

Net Power - ISO 9249	258.3 kW	346 hp
Net Power - ISO 9249 (DIN)	351 hp (metric)	
Engine Model	Cat C9.3B	
Engine Power - ISO 14396	259 kW	347 hp
Engine Power - ISO 14396 (DIN)	352 hp (metric)	
Bore	115 mm	5 in
Stroke	149 mm	6 in
Displacement	9.3 L	568 in ³
Biodiesel Capability	Up to B20 ¹	
Emissions	Emits equivalent to U.S. EPA Tier 3 and EU Stage IIIA.	

Net power advertised is the power available at the flywheel when the engine is equipped with fan, air intake system, exhaust system, and alternator with engine speed at 2,000 rpm. Advertised power is tested per the specified standard in effect at the time of manufacture.

¹Cat engines are compatible with diesel fuel blended with the following lower-carbon intensity fuels** up to 100% biodiesel FAME (fatty acid methyl ester)* or 100% renewable diesel, HVO (hydrogenated vegetable oil) and GTL (gas-to-liquid) fuels. Refer to guidelines for successful application. Please consult your Cat dealer or "Caterpillar Machine Fluids Recommendations" (SEBU6250) for details.

*For use of blends higher than 20% biodiesel, consult your Cat dealer.

**Tailpipe greenhouse gas emissions from lower-carbon intensity fuels are essentially the same as traditional fuels.

Hydraulic System

Main System - Maximum Flow	560 L/min	148 gal/min
Maximum Pressure - Equipment	35 000 kPa	5,076 psi
Maximum Pressure - Equipment - Lift Mode	38 000 kPa	5,511 psi
Maximum Pressure - Travel	35 000 kPa	5,076 psi
Maximum Pressure - Swing	29 400 kPa	4,264 psi

Swing Mechanism

Swing Speed	8.84 r/min	
Maximum Swing Torque	143 kN-m	105,214 ft-lbf

Weights

Operating Weight	36 800 kg	81,200 lb
------------------	-----------	-----------

Service Refill Capacities

Fuel Tank Capacity	600 L	158.5 gal
Cooling System	40 L	10.5 gal
Engine Oil	32 L	8.5 gal
Swing Drive - Each	18 L	4.8 gal
Final Drive - Each	8 L	2.1 gal
Hydraulic System - Including Tank	373 L	98.5 gal
Hydraulic Tank	161 L	42.5 gal

Dimensions

Boom	Reach 6.5 m (21'4")	
Stick	Reach 3.2 m (10'6")	
Bucket	GD 2.50 m ³ (3.27 yd ³)	
Shipping Height - Top of Cab	3180 mm	10.5 ft
Handrail Height	3180 mm	10.5 ft
Shipping Length	11 160 mm	36.8 ft
Tail Swing Radius	3530 mm	11.7 ft
Counterweight Clearance	1260 mm	4.2 ft
Ground Clearance	510 mm	1.8 ft
Track Length	5030 mm	16.5 ft
Track Length to Center of Rollers	4040 mm	13.3 ft
Track Gauge	2740 mm	9 ft
Transport Width - 600 mm (24") Shoes	3340 mm	10.11 ft

Working Ranges & Forces

Boom	Reach 6.5 m (21'4")	
Stick	Reach 3.2 m (10'6")	
Bucket	GD 2.50 m ³ (3.27 yd ³)	
Maximum Digging Depth	7480 mm	24.5 ft
Maximum Reach at Ground Level	11 020 mm	36.3 ft
Maximum Cutting Height	10 360 mm	34 ft
Maximum Loading Height	7120 mm	23.3 ft
Maximum Depth Cut for 2440 mm (8 ft) Level Bottom	7320 mm	24 ft
Maximum Vertical Wall Digging Depth	5550 mm	18.3 ft
Bucket Digging Force - ISO	209 kN	46,940 lbf
Stick Digging Force - ISO	165 kN	37,200 lbf

Air Conditioning System

The air conditioning system on this machine contains the fluorinated greenhouse gas refrigerant R134a (Global Warming Potential = 1430). The system contains 1.00 kg of refrigerant, which has a CO₂ equivalent of 1.430 metric tonnes.

STANDARD & OPTIONAL EQUIPMENT

NOTE: Standard and optional equipment may vary. Consult your Cat dealer for details.

	Standard	Optional		Standard	Optional
UNDERCARRIAGE AND STRUCTURES			CAT TECHNOLOGY		
Towing eye on base frame	✓		VisionLink	✓	
Swivel guard	✓		Cat Grade 2D	✓	
HD bottom guard	✓		Remote Flash	✓	
HD travel motor guards	✓		Remote Troubleshoot	✓	
Grease lubricated track	✓		Cat Assist	✓	
HD swing frame	✓		Cat Payload	✓	
HD swing bearing	✓		Compatibility with radios and base stations from Trimble, Topcon, and Leica	✓	
7.56 mt (16,667 lb) counterweight	✓		Capability to install 3D grade systems from Trimble, Topcon, and Leica	✓	
Full-length track guiding guards		✓	Cat Grade 2D with Attachment Ready Option (ARO)		✓
Segmented two-piece track guiding guards		✓	Cat Grade 3D single GNSS		✓
HD rollers		✓	Cat Grade 3D dual GNSS		✓
600 mm (24") double grouser, triple grouser, HD triple grouser track shoes		✓	Work tool recognition		✓
700mm (28") triple grouser track shoes		✓	Work tool tracking (requires PL161 attachment locator)		✓
800mm (31") triple grouser track shoes		✓	Cat Tilt Rotator (TRS) Integration		✓
BOOMS AND STICKS			HYDRAULIC SYSTEM		
6.18m (20'3") Mass boom		✓	Boom and stick regeneration circuit	✓	
6.5 m (21'4") HD Reach boom		✓	Electronic main control valve	✓	
2.55m (8'4") Mass stick		✓	Auto hydraulic oil warmup	✓	
2.8m (9'2") HD Reach stick		✓	Bio hydraulic oil capability	✓	
3.2m (10'6") HD Reach stick		✓	Fine swing	✓	
3.9 m (12'10") HD Reach stick		✓	Reverse swing damping valve	✓	
TB family bucket linkage with/without lifting eye		✓	Auto swing parking brake	✓	
DB family bucket linkage with/without lifting eye		✓	High performance hydraulic return filter	✓	
ELECTRICAL SYSTEM			Two speed travel	✓	
Maintenance-free 1,000 CCA batteries (x2)	✓		Auto dig boost		✓
Centralized electrical disconnect switch	✓		Auto heavy lift		✓
LED exterior chassis and boom lights	✓		Single one-way circuit		✓
Maintenance-free 1,000 CCA batteries (x4)		✓	Combined two-way circuit		✓
SERVICE AND MAINTENANCE			Hydraulic efficiency monitoring		✓
Integrated vehicle health management system	✓				
Grouped location of engine oil and fuel filters	✓				
S.O.S ports	✓				
Integrated vehicle health management system	✓				

(continued on next page)

STANDARD & OPTIONAL EQUIPMENT *(continued)*

NOTE: Standard and optional equipment may vary. Consult your Cat dealer for details.

	Standard	Optional		Standard	Optional
ENGINE			DELUXE CAB		
Three selectable modes: Power, Smart, Eco	✓		High-resolution 203 mm (8") LCD touchscreen monitor	✓	
Auto engine speed control	✓		Auto bi-level air conditioner	✓	
-18° C (0° F) cold start capability	✓		Jog dial and shortcut keys for monitor control	✓	
Double element air filter with integrated pre-cleaner	✓		Keyless push-to-start engine control	✓	
Remote disable	✓		Height-adjustable console	✓	
Oil level sensor		✓	Tilt-up left-side console	✓	
Battery-operated engine heater		✓	Heated air-suspension seat	✓	
Cold start block heater		✓	Monitor integrated Bluetooth radio with USB/Auxiliary ports	✓	
52° C (126° F) high-ambient cooling		✓	12V DC outlets	✓	
Hydraulic reverse fan		✓	Beverage holder	✓	
-32° C (-25° F) cold start capability		✓	Cup holder	✓	
SAFETY AND SECURITY			Openable polycarbonate skylight hatch	✓	
Auto hammer stop	✓		LED dome light	✓	
Caterpillar One Key security system	✓		Floor welcome light	✓	
Lockable external tool/storage box	✓		Roller front sunshade	✓	
Lockable door, fuel, and hydraulic tank locks	✓		Roller rear sunshade	✓	
Lockable fuel drain compartment	✓		Beacon ready	✓	
Lockable disconnect switch	✓		High-resolution 254 mm (10") LCD touchscreen monitor		✓
Service platform with anti-skid plate and recessed bolts	✓		Cat Stick Steer		✓
Right Hand (RH) handrail and handhold	✓		Auxiliary relay		✓
Signaling/warning horn	✓		ESSENTIAL CAB		
Ground-level secondary engine shutoff switch	✓		High-resolution 203 mm (8") LCD touchscreen monitor	✓	
Rearview camera	✓		Auto bi-level air conditioner	✓	
Inspection lighting	✓		Keyless push-to-start engine control	✓	
Cat E-Fence		✓	Air-suspension seat	✓	
Swing alarm		✓	Bluetooth radio with USB/Auxiliary ports	✓	
Boom lowering check valve		✓	24V DC outlet	✓	
Stick lowering check valve		✓	Beverage holder	✓	
Inspection lighting		✓	Openable steel hatch	✓	
			LED dome light	✓	
			Roller front sunshade	✓	
			High-resolution 254 mm (10") LCD touchscreen monitor		✓
			Roller rear sunshade		✓

For more complete information on Cat products, dealer services and industry solutions, visit us on the web at www.cat.com.

© 2024 Caterpillar. All Rights Reserved.

VisionLink is a trademark of Caterpillar Inc., registered in the United States and in other countries.

Materials and specifications are subject to change without notice. Featured machines in photos may include additional equipment. See your Cat dealer for available options.

CAT, CATERPILLAR, LET'S DO THE WORK, their respective logos, SmartBoom, S·O·S, Product Link, "Caterpillar Corporate Yellow," the "Power Edge" and Cat "Modern Hex" trade dress as well as corporate and product identity used herein, are trademarks of Caterpillar and may not be used without permission.
www.cat.com www.caterpillar.com



AEXQ3447-02
Replaces AEXQ3447-01
Build Number: 08C
(Afr-ME, Eurasia,
Indonesia, S Am, SE Asia)

