

CAT® APP RELEASE NOTES IOS_2.40 | ANDROID_2.40

March 2022

CAT® APP

24/7 EQUIPMENT MANAGEMENT ON-THE-GO

Efficient equipment management starts with the Cat App. Track the location and health of your equipment, order service and parts, and activate telematics devices directly from your mobile device. Staying on top of your fleet 24/7 has never been easier.

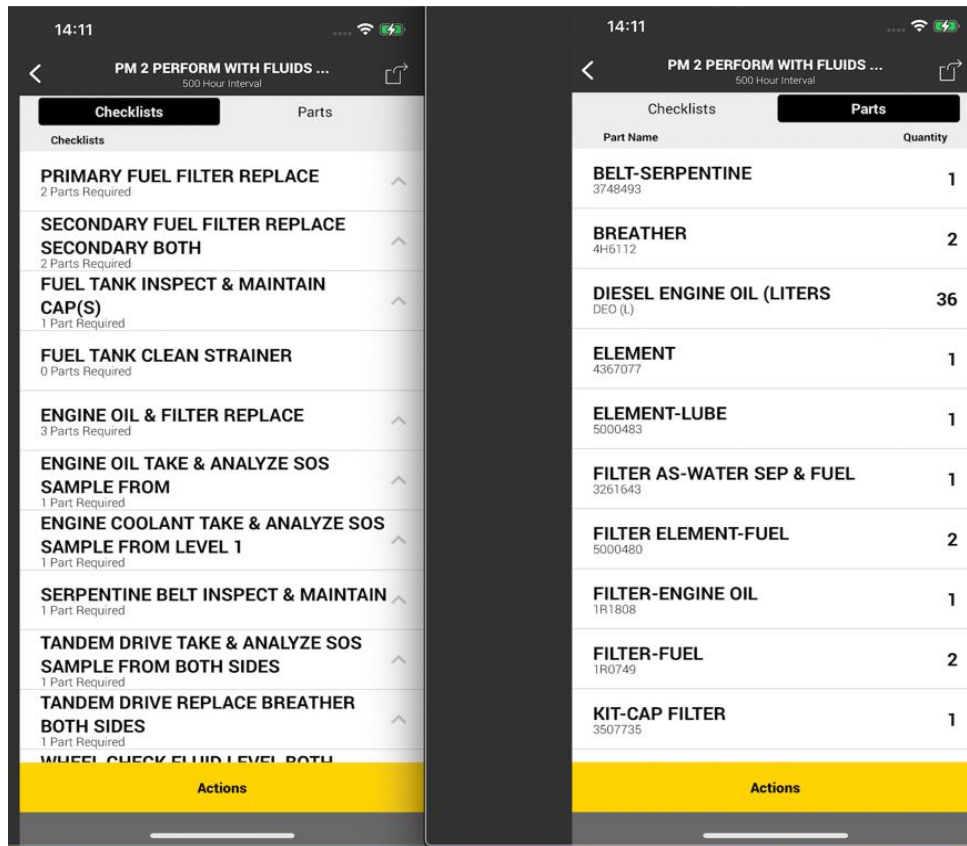
WHAT'S NEW

Feature Improvements

- View entire parts list in Planned Maintenance
- Performance improvement made to load data quicker by eliminating the Planned Maintenance Loading banner in the Fleet view

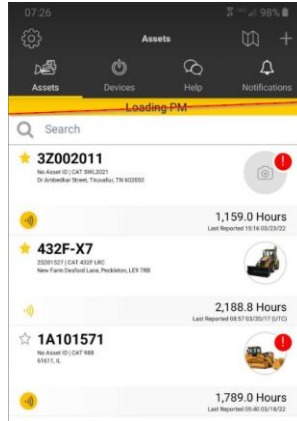
VIEW ENTIRE PARTS LIST

Toggle between the checklist and parts to easily view.

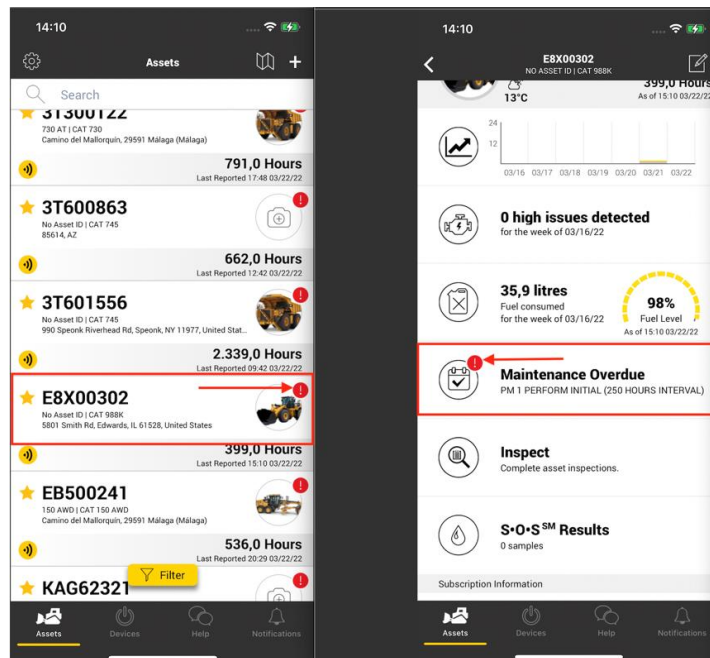


INCREASED DATA LOAD IN FLEET VIEW

No change to the icon representation of an overdue Planned Maintenance.



Back-end service change to see if any asset Planned Maintenance services are overdue, which creates the ability to load full fleet list much faster.



BUG FIXES

We've addressed the following bug fixes to enhance the overall user experience:

Fix Details	Version	Bug Number
Android – Contact Support/Help – after sending Help Request user is taken back to incorrect page	2.40	610120
Android – PM – Crash completing PM on one occasion	2.40	611641
Android – Demo – AssetList – favorite asset not reordered after pulldown	2.40	611926
iOS – Service Request – App freeze after cancel photo library	2.40	612433
iOS – PM – Loading indicator disappears on PM Rationalization screen and makes insert an additional option	2.40	601469
Android – Loading spinner missing after phone lock and relaunch	2.40	603443
Android – Get PL542 – Dealer Install – Make field not mandatory	2.40	641113
Android – PL542 – Incorrect Location Name for Product Link box	2.40	614327
Android – PL542 – Incorrect “Scan QR” tile titles	2.40	620420
iOS – PL542 activation – Subscription description not matching	2.40	620424
iOS – Activate PL542 – Incorrect subtext after install box completion	2.40	620458

