



# D4

## Track-Type Tractor

# Technical Specifications

Configurations and features may vary by region. Please consult your Cat® dealer for availability in your area.

### Table of Contents

<b>Specifications</b> .....	<b>2</b>
Engine .....	2
Transmission – Travel Speed .....	2
Service Refill Capacities .....	2
Drawbar Pull .....	2
D4 .....	3
Blades .....	3
D4 LGP .....	4
Blades .....	4
Track Shoes .....	5
Heavy Duty/Forestry Dozer .....	5
Ripper .....	6
Winch .....	6
Standards .....	7
Technology Features .....	8
<b>Standard and Optional Equipment</b> .....	<b>9</b>

# D4 Track-Type Tractor Specifications

## Engine

Engine Model	Cat® C7.1	
Emissions	Brazil MAR-1 and China Nonroad Stage III, equivalent to U.S. EPA Tier 3/EU Stage IIIA	
Build Number	15A	
Net Power (2,200 rpm)		
SAE J1349	95 kW	128 hp
ISO 9249	97 kW	130 hp
ISO 9249 (DIN)	132 mhp	
Engine Power – Maximum (2,000 rpm)		
SAE J1995	119 kW	160 hp
ISO 14396	117 kW	157 hp
ISO 14396 (DIN)	159 mhp	
Bore	105 mm	4.1 in
Stroke	135 mm	5.3 in
Displacement	7 L	428.8 in <sup>3</sup>
Biodiesel Compatibility	Up to B20 <sup>(1)</sup>	

- Net power advertised is the power available at the engine flywheel when the engine is equipped with the air cleaner, alternator, A/C compressor at full load and cooling fan at maximum speed.
- Advertised power is tested per the specified standard in effect at the time of manufacture.
- No engine derating required up to 3000 m (9,840 ft) altitude; beyond 3000 m (9,840 ft) automatic derating occurs.

<sup>(1)</sup>Cat engines are compatible with the following renewable, alternative, and biodiesel\* fuels that reduce greenhouse gases on a lifecycle basis:

✓ Up to B20 biodiesel (FAME)\*\*

✓ Up to 100% HVO and GTL renewable fuels

\*Refer to guidelines for successful application. Please consult your Cat dealer or “Caterpillar Machine Fluids Recommendations” (SEBU6250) for details.

\*\*B30, where mandated, can be used. For use of higher blends, up to B100, consult your Cat dealer.

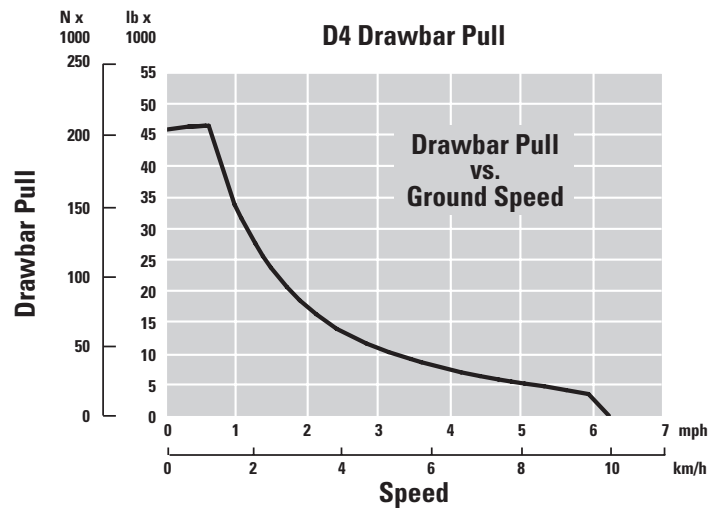
## Transmission – Travel Speed

Transmission Type	Hydrostatic	
Forward	0-10 km/h	0-6.2 mph
Reverse	0-10 km/h	0-6.2 mph

## Service Refill Capacities

Fuel Tank	260 L	69 gal
Cooling System	30 L	7.9 gal
Engine Crankcase	18 L	4.8 gal
Final Drives	18.5 L	4.9 gal
Hydraulic Tank	64 L	16.9 gal

## Drawbar Pull



# D4 Track-Type Tractor Specifications

## D4

Operating Weight*	13 500 kg	29,800 lb
Shipping Weight**	13 200 kg	31,600 lb
Ground Pressure (ISO 16754)	40 kPa	5.8 psi
Undercarriage (Standard)	40 Section/ 8 Bottom Rollers	
<b>1</b> Track Gauge	1770 mm	70 in
<b>2</b> Width of Track Shoe (Standard)	560 mm	22 in
<b>3</b> Width of Tractor with Standard Shoe:		
Without Blade	2330 mm	92 in
With VPAT Blade Angled 25°	2896 mm	114 in
With Foldable Blade in Transport Position	2364 mm	93 in
<b>4</b> Length of Track on Ground	2645 mm	104 in
Ground Contact Area (ISO 16754)	3.3 m <sup>2</sup>	5,100 in <sup>2</sup>
Grouser Height (Moderate/Extreme Service)	48/57 mm	1.9/2.2 in
Ground Clearance	360 mm	14 in
<b>5</b> Machine Height***	2965 mm	117 in
<b>6</b> Length of Basic Tractor****	4618 mm	181 in

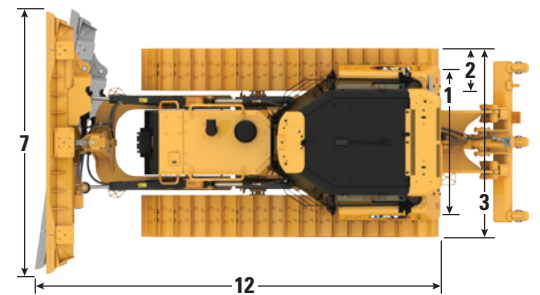
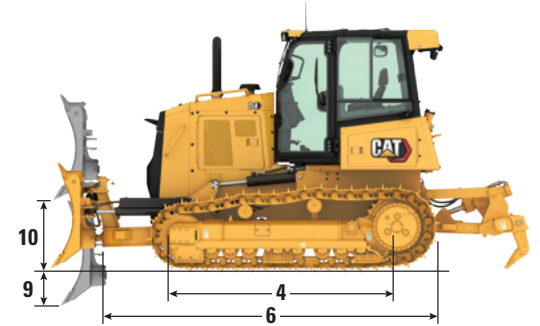
All dimensions above with Cat Abrasion™ undercarriage with Extreme Service shoes of maximum width for configuration, VPAT blade, and calculated per ISO 16754 unless otherwise specified.

\*Operating weight includes external ROPS (EROPS), air conditioner, lights, VPAT dozer, transmission, drawbar, engine enclosure, three-valve hydraulics, 100% fuel, Cat Comfort Series air suspension seat and operator.

\*\*Shipping weight includes external ROPS (EROPS), air conditioner, lights, VPAT dozer, transmission, drawbar, engine enclosure, three-valve hydraulics, 10% fuel, Cat Comfort Series air suspension seat.

\*\*\*Machine height from tip of grouser to top of ROPS cab.

\*\*\*\*Length of Basic Tractor with C-frame/drawbar.



## Blades

Configuration	VPAT		Foldable VPAT	
Capacity (ISO 9246)	3.3 m <sup>3</sup>	4.3 yd <sup>3</sup>	3.3 m <sup>3</sup>	4.3 yd <sup>3</sup>
<b>7</b> Width across End Bits	3196 mm	10.5 ft	3196 mm	10.5 ft
Width without End Bits	3097 mm	10.2 ft	3097 mm	10.2 ft
Width across End Bits (Blade Angled 24°)	2920 mm	115 in	2920 mm	115 in
Width without End Bits (Blade Angled 24°)	2829 mm	111.4 in	2829 mm	111.4 in
Width of the Machine with (Foldable Blade Angled 24° for transportation purpose only)	—		2371 mm	93.3 in
Maximum Blade Angle	24°		24°	
<b>8</b> Height	1291 mm	50.8 in	1291 mm	50.8 in
<b>9</b> Dig Depth	470 mm	18.5 in	470 mm	18.5 in
<b>10</b> Lift Height	953 mm	37.5 in	953 mm	37.5 in
<b>11</b> Maximum Tilt at Blade Corner	226 mm	8.9 in	226 mm	8.9 in
Maximum Tilt Angle	8°		8°	
Pitch Adjustment	60° (cutting edge/ground, nominal); -2°/+4°			
<b>12</b> Length of Machine (Blade Straight)	5142 mm	202.4 in	5142 mm	202.4 in
Length of Machine (Blade Angled 24°)	5738 mm	226.3 in	5738 mm	226.3 in
Blade Weight	1005 kg	2,215 lb	1195 kg	2,634.5 lb

# D4 Track-Type Tractor Specifications

## D4 LGP

Operating Weight*	14 350 kg	31,600 lb
Shipping Weight**	14 050 kg	30,950 lb
Ground Pressure (ISO 16754)	31 kPa	4.5 psi
Undercarriage (Standard)	46 Section/ 8 Bottom Rollers	
<b>1</b> Track Gauge	2000 mm	79 in
<b>2</b> Width of Track Shoe (Standard)	760 mm	30 in
<b>3</b> Width of Tractor with Standard Shoe:		
Without Blade	2760 mm	109 in
With VPAT Blade Angled 25°	3337 mm	131 in
With Foldable Blade in Transport Position	2850 mm	112 in
<b>4</b> Length of Track on Ground	2645 mm	104 in
Ground Contact Area (ISO 16754)	4.5 m <sup>2</sup>	6,920 in <sup>2</sup>
Grouser Height (Moderate/Extreme Service)	48/57 mm	1.9/2.2 in
Ground Clearance	360 mm	14 in
<b>5</b> Machine Height***	2965 mm	117 in
<b>6</b> Length of Basic Tractor****	4618 mm	181 in

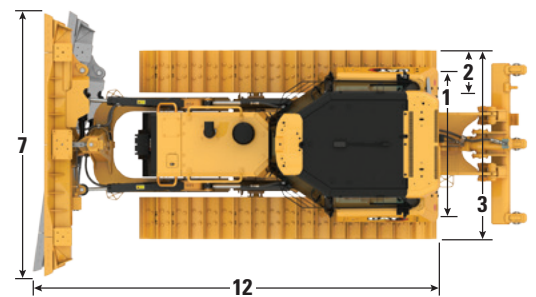
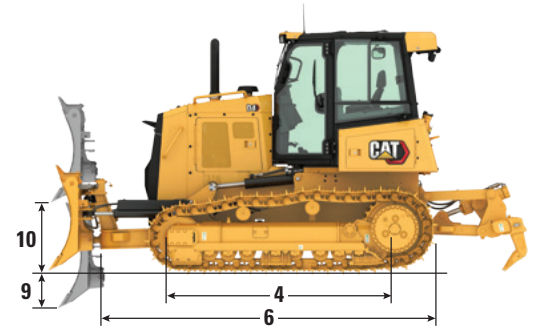
All dimensions above with Cat Abrasion undercarriage with Extreme Service shoes of maximum width for configuration, VPAT blade, and calculated per ISO 16754 unless otherwise specified.

\*Operating weight includes external ROPS (EROPS), air conditioner, lights, VPAT dozer, transmission, drawbar, engine enclosure, three-valve hydraulics, 100% fuel, Cat Comfort Series air suspension seat and operator.

\*\*Shipping weight includes external ROPS (EROPS), air conditioner, lights, VPAT dozer, transmission, drawbar, engine enclosure, three-valve hydraulics, 10% fuel, Cat Comfort Series air suspension seat.

\*\*\*Machine height from tip of grouser to top of ROPS cab.

\*\*\*\*Length of Basic Tractor with C-frame/drawbar.



Standard configuration shown.

## Blades

Configuration	LGP VPAT		Foldable LGP VPAT	
Capacity (ISO 9246)	3.8 m <sup>3</sup>	4.9 yd <sup>3</sup>	3.8 m <sup>3</sup>	4.9 yd <sup>3</sup>
<b>7</b> Width across End Bits	3684 mm	12.0 ft	3684 mm	12.0 ft
Width without End Bits	3573 mm	11.7 ft	3573 mm	11.7 ft
Width across End Bits (Blade Angled 24°)	3366 mm	132.5 in	3366 mm	132.5 in
Width without End Bits (Blade Angled 24°)	3264 mm	128.5 in	3264 mm	128.5 in
Width of the Machine with (Foldable Blade Angled 24° for transportation purpose only)	—		2815 mm	110.8 in
Maximum Blade Angle	24°		24°	
<b>8</b> Height	1323 mm	52.1 in	1323 mm	52.1 in
<b>9</b> Dig Depth	470 mm	18.5 in	470 mm	18.5 in
<b>10</b> Lift Height	953 mm	37.5 in	953 mm	37.5 in
<b>11</b> Maximum Tilt at Blade Corner	260 mm	10.2 in	260 mm	10.2 in
Maximum Tilt Angle	8°		8°	
Pitch Adjustment	60° (cutting edge/ground, nominal); -2°/+4°			
<b>12</b> Length of Machine (Blade Straight)	5142 mm	202.5 in	5142 mm	202.5 in
Length of Machine (Blade Angled 24°)	5837 mm	229.8 in	5837 mm	229.8 in
Blade Weight	1105 kg	2,436 lb	1306 kg	2,879 in

# D4 Track-Type Tractor Specifications

## Track Shoes

Some track shoes not available in all regions. Please consult your Cat dealer for details.

Standard		
510 mm (20 in)	Cat Abrasion™	Moderate Service
510 mm (20 in)	Cat Abrasion	Extreme Service
560 mm (22 in)	Cat Abrasion	Moderate Service
560 mm (22 in)	Cat Abrasion	Extreme Service
510 mm (20 in)	Heavy Duty	Extreme Service
560 mm (22 in)	Heavy Duty	Extreme Service
LGP		
760 mm (30 in)	Cat Abrasion	Moderate Service
760 mm (30 in)	Cat Abrasion	Extreme Service
760 mm (30 in)	Heavy Duty	Extreme Service
760 mm (30 in)	Heavy Duty	Self-Cleaning

## Heavy Duty/Forestry Dozer

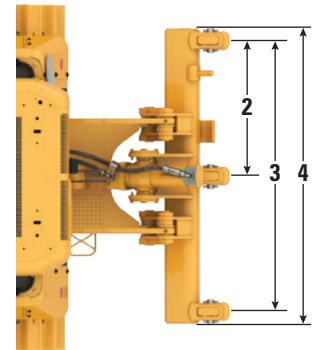
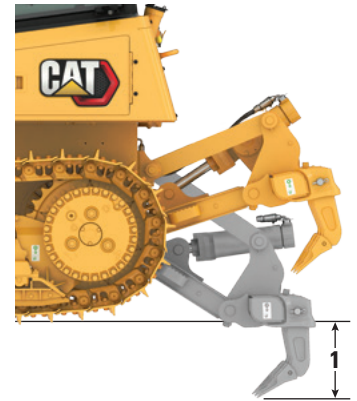
You can outfit your D4 with a variety of factory options designed to provide added protection in heavy-duty applications like forestry, agriculture and land clearing. Please consult with your Cat dealer about the variety of options available to best equip your dozer for the work that you do:

- Heavy duty cab with polycarbonate windows
- Cab protection package: sweeps, rear cab screen
- Heavy duty cab protection package: sweeps, rear cab screen, side screen, light guards
- Rear screen
- Side screens
- Heavy duty front protection package: heavy duty radiator grill and standard crankcase guard
- Heavy duty protection package: heavy duty radiator grill, heavy duty fuel tank guard, heavy duty crankcase guard (also available for fast fill/fast fill ready models)
- Heavy duty undercarriage
- Extreme service track shoes
- Track guiding guards
- Six LED lights
- Flashing beacon
- Turbine precleaner with screen

# D4 Track-Type Tractor Specifications

## Ripper

Type	Fixed Parallelogram	
<b>1</b> Maximum Penetration Force		
D4	42.2 kN	9,480 lb
D4 LGP	45.1 kN	10,138 lb
Maximum Pry-out Force		
D4	166.7 kN	37,480 lb
D4 LGP	166.7 kN	37,480 lb
<b>2</b> Pocket Spacing	896 mm	35.3 in
<b>3</b> Shank Gauge	1792 mm	70.6 in
Shank Section	58.5 × 138 mm	2.3 × 5.4 in
Number of Pockets	3	
<b>4</b> Overall Beam Width	1951 mm	76.8 in
Beam Cross Section	165 × 211 mm	6.5 × 8.3 in
Maximum Penetration	360 mm	14.2 in
Weight with One Shank	845 kg	1,863 lb
Each Additional Shank	34 kg	75 lb



## Winch

Winch Model	PA50	
Winch Drive	Hydrostatic	
Weight*	907 kg	2,000 lb
Winch and Bracket Length	845 mm	33.2 in
Winch Case Width	740 mm	29.1 in
Drum Diameter	205 mm	8 in
Drum Width	274 mm	11 in
Flange Diameter	457 mm	18 in
Drum Capacity (recommended rope)	93 m	306 ft
Drum Capacity (optional rope)	67 m	220 ft
Rope Recommended Diameter	19 mm	0.75 in
Optional Cable Size	22 mm	0.9 in
Cable Ferrule Size (O.D.)	54 mm	2.1 in
Cable Ferrule Size (length)	67 mm	2.6 in
Maximum Bare Drum		
Line Pull	222.4 kN	50,000 lbf
Line Speed	38 m/min	124 ft/min
Maximum Full Drum		
Line Pull	115.7 kN	26,000 lbf
Line Speed	70 m/min	230 ft/min

\*Weight includes: pump, operator controls, oil, mounting brackets and spacers.

## Standards

---

### ROPS/FOPS

- ROPS (Rollover Protective Structure) offered by Caterpillar for the machine meets ROPS criteria ISO 3471:2008.
  - FOPS (Falling Object Protective Structure) meets ISO 3449-2005 Level II.
- 

### Brakes

- Brakes meet the standard ISO 10265:2008.
- 

### Sound and Vibration Information

- The declared dynamic operator sound pressure level is 76 dB(A) when “ISO 6396:2008” is used to measure the value for an enclosed cab. The cab was properly installed and maintained. The measurements were conducted with the cab doors and the cab windows closed.

Note: The dynamic operator sound pressure level uncertainty is  $\pm 2$  dB(A).

- Hearing protection may be needed when the machine is operated with an open operator station, in a noisy environment, or with a cab that is not properly maintained.
- The declared exterior sound power level is 109 dB(A) when the value is measured according to the dynamic test procedures and the conditions that are specified in “ISO 6395:2008.”

# D4 Track-Type Tractor Specifications

## Technology Features

The broadest choice of technology features helps you get the most from your dozer.

GRADE	Standard	ARO with Assist	Grade with 3D
Third Party Grade Control Ready	✓	✓	✓
Grade with 3D	—	+ <sup>1</sup>	✓
ASSIST			
Slope Indicate			
Stable Blade	—	✓	✓
Traction Control			
Grade with Slope Assist	—	✓	✓
VISION/DETECT			
Rear Vision Camera	⊕	⊕	⊕
LINK			
Product Link™ Cellular	✓	✓	✓
Product Link Satellite	⊕	⊕	⊕
Remote Flash/Remote Troubleshoot	✓	✓	✓
Grade Connectivity	—	✓	✓
Operator Features			
Operator ID	✓	✓	✓
Machine Security – Passcode <sup>2</sup>	+	+	+

<sup>1</sup> Requires Software Enabled Attachment (SEA)

<sup>2</sup> Contact Dealer to Enable

✓ Standard

+ Dealer Install Option

⊕ Factory Option



## Standard and Optional Equipment

Standard and optional equipment may vary. Consult your Cat dealer for details.

	Standard	Optional		Standard	Optional
<b>POWER TRAIN</b>			<b>OPERATOR ENVIRONMENT (continued)</b>		
Cat C7.1 engine, turbocharged	✓		Programmable/selectable bi-directional shifting	✓	
Dual path, electronic control, closed loop hydrostatic transmission	✓		Independent forward/reverse speed settings	✓	
Air To Air AfterCooler (ATAAC)	✓		Rotary throttle switch	✓	
Aluminum bar plate cooling system (radiator, power train, aftercooler)	✓		Eco Mode	✓	
Hydraulically driven, variable speed fan	✓		Single pedal combining deceleration and braking functions	✓	
3000 m (9,840 ft) altitude operation capability without de-rating	✓		Integrated air conditioning with automatic temperature control	✓	
Auto engine speed control	✓		Electronic travel speed limiter	✓	
Engine idle shutdown	✓		Engine RPM and gear display	✓	
Turbine precleaner with screen		✓	Electronic hour meter	✓	
Air cleaner with integrated precleaner, dust ejector and under hood air intake	✓		Electronic engine air cleaner service indicator	✓	
Electric fuel priming pump	✓		Electronic water-in-fuel indicator	✓	
Fuel/water separator	✓		12V radio ready (plug and play)	✓	
Glowplug starting aid	✓		Radio, AM/FM/Aux/USB/Bluetooth®		✓
<b>OPERATOR ENVIRONMENT</b>			Rear view camera		✓
ROPS/FOPS cab	✓		Dash foot pads	✓	
Standard cab with air suspension seat	✓		Inside rearview mirror	✓	
Comfort cab package with heated/ventilated seat, heated joysticks		✓	12V power port	✓	
Heavy duty cab with polycarbonate windows, air suspension seat		✓	Coat hook	✓	
Air suspension cloth seat	✓		Storage compartment	✓	
Adjustable armrests	✓		Cup holder	✓	
Seat mounted controls with fore/aft adjustment	✓		Heavy duty rubber floor mat	✓	
Retractable seat belt, 76 mm (3 in)	✓		Intermittent wiper	✓	
Color graphic 17.8 cm (7 in) display with gauge for engine coolant temperature, hydraulic oil temperature, fuel level	✓		<b>HYDRAULICS</b>		
			Three-valve hydraulics	✓	
			Load sensing hydraulics	✓	

(continued on next page)

# D4 Standard and Optional Equipment

## Standard and Optional Equipment *(continued)*

Standard and optional equipment may vary. Consult your Cat dealer for details.

	Standard	Optional		Standard	Optional
<b>TECHNOLOGY PRODUCTS</b>			<b>SERVICE AND MAINTENANCE</b>		
Standard Technology – Third Party Grade Control Ready		✓	Antifreeze coolant (–37° C/–34.6° F)	✓	
Attachment Ready Option (ARO) with Assist: Slope Indicate, Slope Assist, Stable Blade, Traction Control, ARO, Third Party Grade Control Ready		✓	Extended life coolant	✓	
Cat Grade with 3D: factory installed and integrated Grade with 3D, AutoCarry™, plus features from ARO with Assist package		✓	Engine enclosures	✓	
Compatibility with radios and base stations from Trimble, Topcon, and Leica	✓		Hinged radiator louvered grill	✓	
Capability to install 3D grade systems from Trimble, Topcon, and Leica	✓		Swing-out radiator fan	✓	
Product Link ready	✓		Front pull device	✓	
Cellular Product Link		✓	Ecology drains (engine, power train and implement oil, engine coolant)	✓	
Satellite Product Link		✓	Scheduled Oil Sampling (S·O·S <sup>SM</sup> ) ports (engine, power train, implement oil)	✓	
Remote Flash		✓	Shovel Holder		✓
Remote Troubleshoot		✓	Standard hydraulic oil	✓	
No Product Link		✓	Bio hydraulic oil		✓
<b>UNDERCARRIAGE</b>			Engine coolant heater – 240V		✓
Heavy duty undercarriage with eight bottom rollers/two carrier rollers	✓		Insulated Breather		✓
Cat Abrasion undercarriage with eight bottom rollers/two carrier rollers		✓	Vandalism protection	✓	
Hydraulic track adjusters	✓		<b>ELECTRICAL</b>		
Replaceable sprocket rim segments	✓		Six (6) integrated halogen lights (four [4] front, two [2] rear)	✓	
Track pairs: please see chart on Page 5		✓	Six (6) integrated LED lights (four [4] front, two [2] rear)		✓
Center track guiding guards		✓	Horn	✓	
Front and rear track guiding guards		✓	Back-up alarm	✓	
Full track guiding guards		✓	12V converter, 10A	✓	
			Diagnostic connector	✓	
			Batteries, heavy duty, maintenance-free, 900 CCA	✓	
			LED flashing beacon		✓
			100A alternator (24 volt)	✓	
			24V electric starter	✓	

*(continued on next page)*

## Standard and Optional Equipment *(continued)*

Standard and optional equipment may vary. Consult your Cat dealer for details.

	Standard	Optional		Standard	Optional
<b>HYDRAULIC FAN</b>			<b>REAR ATTACHMENTS</b>		
Demand fan	✓		Ripper ready hydraulics package		✓
Demand fan, reversing		✓	Winch ready hydraulics package		✓
<b>BLADES</b>			Dual control hydraulics package		✓
VPAT blade, 3196 mm (10.5 ft) ARO		✓	Rigid drawbar	✓	
Foldable VPAT blade, 3196 mm (10.5 ft) ARO		✓	Multi-shank ripper, straight teeth		✓
LGP VPAT Blade, 3684 mm (12 ft) ARO		✓	Multi-shank ripper, curved teeth		✓
Foldable LGP VPAT Blade, 3684 mm (12 ft) ARO		✓	Winch preparation		✓
<b>GUARDING AND PROTECTION</b>			Swing drawbar		✓
Heavy duty crankcase guard	✓				
Front protection package		✓			
Heavy duty protection package		✓			
Heavy duty protection package, fast fuel ready		✓			
Cab protection package: sweeps, rear cab screen		✓			
Heavy duty cab protection package: sweeps, rear cab screen, side screens, light guards		✓			
Rear screen		✓			
Side screens		✓			



For more complete information on Cat products, dealer services, and industry solutions, visit us on the web at [www.cat.com](http://www.cat.com)

© 2022 Caterpillar  
All rights reserved

Materials and specifications are subject to change without notice. Featured machines in photos may include additional equipment. See your Cat dealer for available options.

CAT, CATERPILLAR, LET'S DO THE WORK, their respective logos, "Caterpillar Corporate Yellow," the "Power Edge" and Cat "Modern Hex" trade dress as well as corporate and product identity used herein, are trademarks of Caterpillar and may not be used without permission.

AEXQ3463 (04-2022)  
Build Number: 15A  
(Afr-ME, Asia Pacific  
[excluding Aus-NZ, Japan,  
Korea], Eurasia, S Am)

