



# 336

## Hydraulic Excavator

# Technical Specifications

Configurations and features may vary by region. Please consult your Cat® dealer for availability in your area.

### Table of Contents

<b>Specifications</b> .....	<b>2</b>
Engine .....	2
Swing Mechanism .....	2
Weights .....	2
Track .....	2
Drive .....	2
Hydraulic System .....	2
Service Refill Capacities .....	2
Standards .....	2
Sound Performance .....	2
Air Conditioning System .....	2
Operating Weights and Ground Pressures .....	3
Major Component Weights .....	3
Dimensions .....	4
Working Ranges and Forces .....	5
Bucket Specifications and Compatibility .....	6
Attachments Offering Guide .....	7
<b>Standard and Optional Equipment</b> .....	<b>8</b>
<b>Dealer Installed Kit and Attachments</b> .....	<b>10</b>
<b>Cab Options</b> .....	<b>11</b>
<b>336 Environmental Declaration</b> .....	<b>12</b>



オフロード法2014年  
基準適合

# 336 Hydraulic Excavator Specifications

## Engine

Engine Model	Cat® C7.1 TTA	
Net Power		
ISO 9249	223.5 kW	300 hp
ISO 9249 (DIN)	304 hp (metric)	
Engine Power		
ISO 14396	225 kW	302 hp
ISO 14396 (DIN)	306 hp (metric)	
Bore	105 mm	4 in
Stroke	135 mm	5 in
Displacement	7.01 L	428 in <sup>3</sup>

- Meets U.S. EPA Tier 4 Final, EU Stage V, and Japan 2014 emission standards.
- Recommended for use up to 4500 m (14,760 ft) altitude with engine power derate above 3000 m (9,840 ft).
- Net power is the power available at the flywheel when the engine is equipped with fan, air intake system, exhaust system and alternator with engine speed at 2,000 rpm.
- All Cat nonroad U.S. EPA Tier 4 Final, EU Stage V, Japan 2014, Korea Stage V, India CEV Stage V, and China Nonroad Stage IV diesel engines are required to use ULSD (ultra-low sulfur diesel with 15 ppm of sulfur or less) or ULSD blended with the following lower-carbon intensity fuels\*\* up to:
  - ✓ 20% biodiesel FAME (fatty acid methyl ester)\*
  - ✓ 100% renewable diesel, HVO (hydrotreated vegetable oil) and GTL (gas-to-liquid) fuels

Refer to guidelines for successful application. Please consult your Cat dealer or “Caterpillar Machine Fluids Recommendations” (SEBU6250) for details.

\*Engines with no aftertreatment devices can use higher blends, up to 100% biodiesel.

\*\*Tailpipe greenhouse gas emissions from lower-carbon intensity fuels are essentially the same as traditional fuels.

## Swing Mechanism

Swing Speed	8.84 rpm	
Maximum Swing Torque	143 kN·m	105,250 lbf

## Weights

Operating Weight	34 200 kg	75,400 lb
------------------	-----------	-----------

- Standard Undercarriage, Reach Boom, R3.2DB (10'6") Stick, GDX 1.40 m<sup>3</sup> (1.83 yd<sup>3</sup>) Bucket, 700 mm (28") Triple Grouser Shoes, 6.8 mt (15,000 lb) Counterweight.

## Track

Optional Track Shoes Width	600 mm	24 in
Optional Track Shoes Width	700 mm	28 in
Optional Track Shoes Width	800 mm	31 in
Number of Shoes (each side)	45	
Number of Track Rollers (each side)	7	
Number of Carrier Rollers (each side)	2	

## Drive

Maximum Gradeability	35°/70%	
Maximum Travel Speed	4.7 km/h	2.9 mph
Maximum Drawbar Pull	302.5 kN	68,005 lbf

## Hydraulic System

Main System – Maximum Flow (Implement)	560 L/min (280 × 2 pumps)	148 gal/min (74 × 2 pumps)
Maximum Pressure – Equipment – Implement	35 000 kPa	5,076 psi
Maximum Pressure – Equipment – Lift Mode	38 000 kPa	5,511 psi
Maximum Pressure – Travel	35 000 kPa	5,076 psi
Maximum Pressure – Swing	29 400 kPa	4,264 psi
Boom Cylinder – Bore	150 mm	6 in
Boom Cylinder – Stroke	1440 mm	57 in
Stick Cylinder – Bore	170 mm	7 in
Stick Cylinder – Stroke	1738 mm	68 in
DB Bucket Cylinder – Bore	150 mm	6 in
DB Bucket Cylinder – Stroke	1151 mm	45 in

## Service Refill Capacities

Fuel Tank Capacity	600 L	158.5 gal
Cooling System	39 L	10.2 gal
Engine Oil (with filter)	25 L	6.6 gal
Swing Drive	18 L	4.8 gal
Final Drive (each)	8 L	2.1 gal
Hydraulic System (including tank)	373 L	98.5 gal
Hydraulic Tank (including suction pipe)	161 L	42.5 gal
Diesel Exhaust Fluid (DEF) Tank	50 L	13.2 gal

## Standards

Brakes	ISO 10265:2008
Cab/Operator Protective Guards (OPG) (optional)	ISO 10262:1998 Level II
Cab/Rollover Protective Structure (ROPS)	ISO 12117-2:2008

## Sound Performance

ISO 6395:2008 (external)	105 dB(A)
ISO 6396:2008 (inside cab)	72 dB(A)

- Hearing protection may be needed when operating with an open operator station and cab (when not properly maintained or doors/windows open) for extended periods or in a noisy environment.

## Air Conditioning System

The air conditioning system on this machine contains the fluorinated greenhouse gas refrigerant R134a (Global Warming Potential = 1430). The system contains 1.00 kg of refrigerant, which has a CO<sub>2</sub> equivalent of 1.430 metric tonnes.

# 336 Hydraulic Excavator Specifications

## Operating Weights and Ground Pressures

	600 mm (24") Double Grouser Track Shoes		700 mm (28") Triple Grouser Track Shoes		800 mm (31") Triple Grouser Track Shoes	
	Weight kg (lb)	Ground Pressure kPa (psi)	Weight kg (lb)	Ground Pressure kPa (psi)	Weight kg (lb)	Ground Pressure kPa (psi)
<b>Base Machine Configurations</b>						
<b>Base Frame with Track Rollers and Carrier Rollers</b>						
<b>6.8 mt (15,000 lb) Counterweight + Standard Undercarriage</b>						
Reach Boom + R3.9 m DB (12'10") Stick + 1.40 m <sup>3</sup> (1.83 yd <sup>3</sup> ) GDX Bucket	34 800 (76,600)	64.8 (9.4)	34 400 (75,800)	54.9 (8.0)	35 000 (77,100)	48.9 (7.1)
Reach Boom + R3.2 m DB (10'6") Stick + 1.40 m <sup>3</sup> (1.83 yd <sup>3</sup> ) GDX Bucket	34 600 (76,200)	64.4 (9.3)	34 200 (75,400)	54.6 (7.9)	34 800 (76,700)	48.6 (7.1)
Reach Boom + R2.8 m DB (9'2") Stick + 1.40 m <sup>3</sup> (1.83 yd <sup>3</sup> ) GDX Bucket	34 500 (76,000)	64.2 (9.3)	34 100 (75,200)	54.5 (7.9)	34 700 (76,500)	48.5 (7.0)

All operating weights include a 90% fuel tank with 75 kg (165 lb) operator.

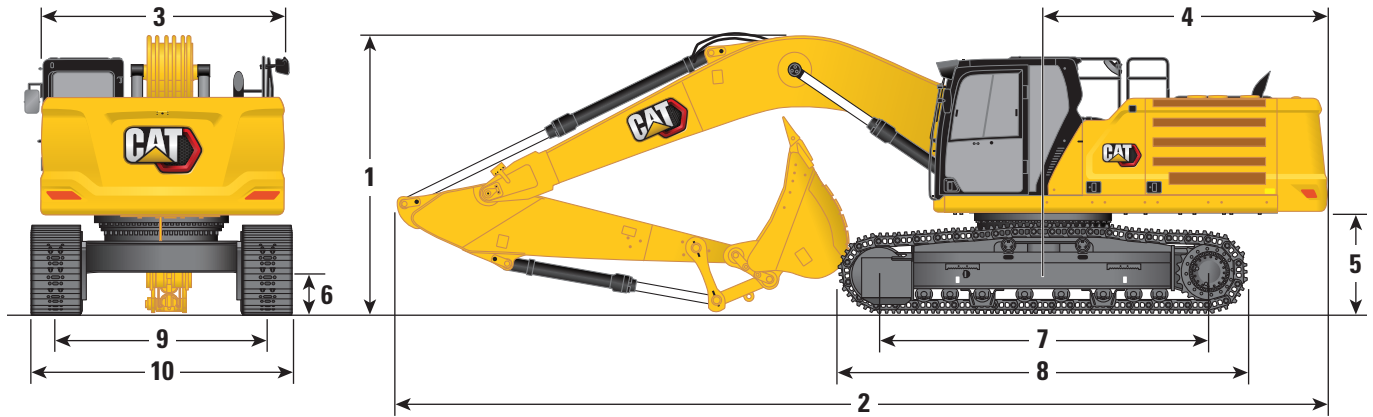
## Major Component Weights

	kg	lb
Base machine with 6.8 mt (15,000 lb) Counterweight, Standard Swing Frame, Base Frame with Track Rollers and Carrier Rollers for Standard Undercarriage	23 170	51,080
Track Shoes:		
600 mm (24") Width, 15.5 mm (0.61") Thick, DG Track Shoes	4450	9,800
700 mm (28") Width, 11 mm (0.43") Thick, TG Track Shoes	4080	8,990
800 mm (31") Width, 13 mm (0.51") Thick, TG Track Shoes	4680	10,310
Two Boom Cylinders	670	1,470
Weight of 90% Fuel Tank and 75 kg (165 lb) Operator	550	1,210
Counterweight:		
6.8 mt (15,000 lb) Counterweight	6800	14,990
Swing Frame:		
Standard Swing Frame	3160	6,960
Undercarriage:		
Base Frame with Track Rollers and Carrier Rollers for Standard Undercarriage	7760	17,100
Boom (including lines, pins, stick cylinder):		
Reach Boom 6.5 m (21'4")	3280	7,230
Sticks (including lines, pins, bucket cylinder, bucket linkage):		
Reach Stick R2.8DB (9'2")	1760	3,870
Reach Stick R3.2DB (10'6")	1860	4,100
Reach Stick R3.9DB (12'10")	2040	4,490
Bucket (without linkage):		
1.40 m <sup>3</sup> (1.83 yd <sup>3</sup> ) GDX	1280	2,820
Quick Coupler (QC):		
Pin Grabber QC	700	1,550

# 336 Hydraulic Excavator Specifications

## Dimensions

All dimensions are approximate and may vary depending on bucket selection.



### Undercarriage Options

#### Boom Option

#### Stick Options

### Standard Undercarriage

#### Reach Boom 6.5 m (21'4")

#### Reach Stick

#### R3.9DB (12'10")

#### R3.2DB (10'6")

#### R2.8DB (9'2")

#### 1 Machine Height:

Cab height	3170 mm	10'5"	3170 mm	10'5"	3170 mm	10'5"
OPG height	3310 mm	10'10"	3310 mm	10'10"	3310 mm	10'10"
Guardrails/Handrails height	3160 mm	10'4"	3160 mm	10'4"	3160 mm	10'4"
With Boom/Stick/Bucket Installed	3670 mm	12'0"	3370 mm	11'1"	3580 mm	11'9"
With Boom/Stick Installed	3520 mm	11'7"	3320 mm	10'11"	3420 mm	11'3"
With Boom Installed	2880 mm	9'5"	2880 mm	9'5"	2880 mm	9'5"
With Boom/Stick/Bucket Installed (with auxiliary lines)	3710 mm	12'2"	3440 mm	11'3"	3610 mm	11'10"
With Boom/Stick Installed (with auxiliary lines)	3570 mm	11'9"	3390 mm	11'1"	3470 mm	11'5"
With Boom Installed (with auxiliary lines)	2970 mm	9'9"	2970 mm	9'9"	2970 mm	9'9"

#### 2 Machine Length:

With Boom/Stick/Bucket Installed	11 180 mm	36'8"	11 140 mm	36'7"	11 190 mm	36'9"
With Boom/Stick Installed	11 160 mm	36'7"	11 120 mm	36'6"	11 170 mm	36'8"
With Boom Installed	9960 mm	32'8"	9960 mm	32'8"	9960 mm	32'8"
With Boom/Stick/Bucket Installed (with auxiliary lines)	11 180 mm	36'8"	11 140 mm	36'7"	11 190 mm	36'9"
With Boom/Stick Installed (with auxiliary lines)	11 160 mm	36'7"	11 120 mm	36'6"	11 170 mm	36'8"
With Boom Installed (with auxiliary lines)	10 010 mm	32'10"	10 010 mm	32'10"	10 010 mm	32'10"

#### 3 Upperframe Width without walkways

2970 mm	9'9"	2970 mm	9'9"	2970 mm	9'9"
---------	------	---------	------	---------	------

#### 4 Tail Swing Radius

3530 mm	11'7"	3530 mm	11'7"	3530 mm	11'7"
---------	-------	---------	-------	---------	-------

#### 5 Counterweight Clearance

1250 mm	4'1"	1250 mm	4'1"	1250 mm	4'1"
---------	------	---------	------	---------	------

#### 6 Ground Clearance

510 mm	1'8"	510 mm	1'8"	510 mm	1'8"
--------	------	--------	------	--------	------

#### 7 Track Length – Length to center of rollers

3610 mm	11'10"	3610 mm	11'10"	3610 mm	11'10"
---------	--------	---------	--------	---------	--------

#### 8 Track Length

4590 mm	15'1"	4590 mm	15'1"	4590 mm	15'1"
---------	-------	---------	-------	---------	-------

#### 10 Track Width/Undercarriage Width:

600 mm (24") Shoes	3190 mm	10'6"	3190 mm	10'6"	3190 mm	10'6"
700 mm (28") Shoes	3290 mm	10'10"	3290 mm	10'10"	3290 mm	10'10"
800 mm (31") Shoes	3390 mm	11'1"	3390 mm	11'1"	3390 mm	11'1"

#### Bucket Type

#### GDX

#### GDX

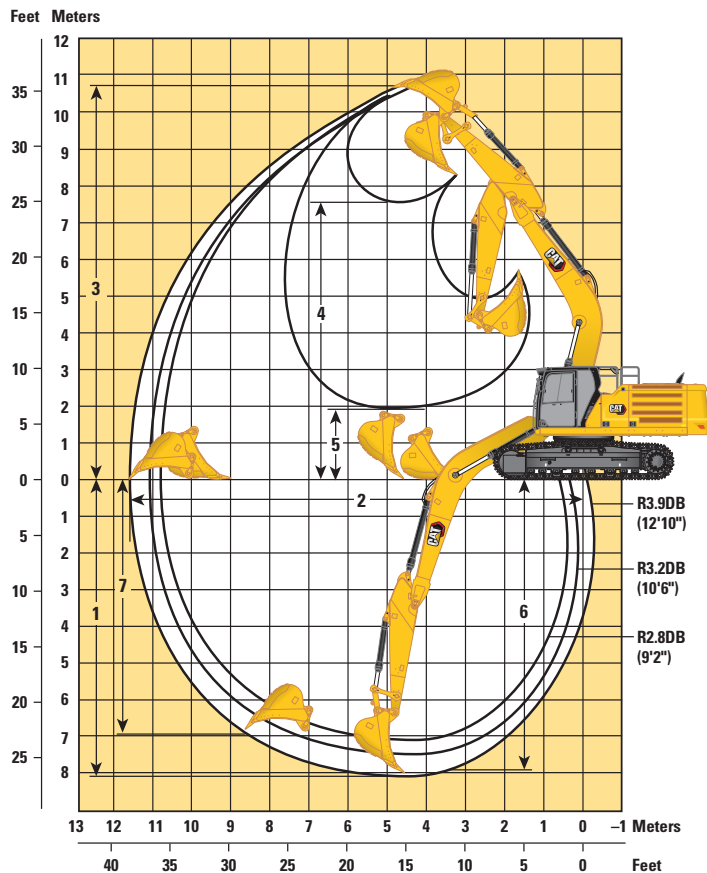
#### GDX

Bucket Capacity	1.40 m <sup>3</sup>	1.83 yd <sup>3</sup>	1.40 m <sup>3</sup>	1.83 yd <sup>3</sup>	1.40 m <sup>3</sup>	1.83 yd <sup>3</sup>
Bucket Tip Radius	1680 mm	5.5 ft	1680 mm	5'5"	1680 mm	5.5 ft

# 336 Hydraulic Excavator Specifications

## Working Ranges and Forces

All dimensions are approximate and may vary depending on bucket selection.



### Undercarriage Options

#### Boom Option

#### Stick Options

### Standard Undercarriage

#### Reach Boom 6.5 m (21'4")

#### Reach Stick

	R3.9DB (12'10")		R3.2DB (10'6")		R2.8DB (9'2")	
	mm	ft/in	mm	ft/in	mm	ft/in
<b>1</b> Maximum Digging Depth	8110	26'7"	7410	24'4"	7010	23'0"
<b>2</b> Maximum Reach at Ground Line	11 640	38'2"	10 940	35'11"	10 630	34'11"
<b>3</b> Maximum Cutting Height	10 700	35'1"	10 290	33'9"	10 340	33'11"
<b>4</b> Maximum Loading Height	7580	24'10"	7190	23'7"	7190	23'7"
<b>5</b> Minimum Loading Height	1990	6'6"	2690	8'10"	3090	10'2"
<b>6</b> Maximum Depth Cut for 2440 mm (8'0") Level Bottom	7970	26'2"	7240	23'9"	6840	22'5"
<b>7</b> Maximum Vertical Wall Digging Depth	6950	22'10"	6130	20'1"	6060	19'11"
Bucket Digging Force (ISO)	223 kN	50,020 lbf	223 kN	50,020 lbf	223 kN	50,020 lbf
Stick Digging Force (ISO)	146 kN	32,910 lbf	169 kN	37,950 lbf	188 kN	42,290 lbf
Bucket Type	GDX		GDX		GDX	
Bucket Capacity	1.40 m <sup>3</sup>	1.83 yd <sup>3</sup>	1.40 m <sup>3</sup>	1.83 yd <sup>3</sup>	1.40 m <sup>3</sup>	1.83 yd <sup>3</sup>
Bucket Tip Radius	1680 mm	5'5"	1680 mm	5'5"	1680 mm	5'5"

# 336 Hydraulic Excavator Specifications

## Bucket Specifications and Compatibility

									Standard Undercarriage		
									6.8 mt (15,000 lb) Counterweight		
	Linkage	Width		Capacity		Weight		Fill %	Reach		
		mm	in	m <sup>3</sup>	yd <sup>3</sup>	kg	lb		R2.8 (9'2")	R3.2 (10'6")	R3.9 (12'2")
<b>Pin-On (No Quick Coupler)</b>											
General Duty	DB	1400	55	1.40	1.83	1163	2,563	100	●	●	●
	DB	1450	57	1.50	1.96	1200	2,645	100	●	●	⊙
	DB	1550	61	1.60	2.09	1262	2,783	100	●	●	⊙
Heavy Duty	DB	1450	57	1.40	1.83	1467	3,234	100	●	●	⊙
	DB	1500	59	1.50	1.96	1518	3,346	100	●	●	⊙
								kg	5060	4790	4160
								lb	11,155	10,560	9,171
<b>With Cat Pin Grabber Coupler</b>											
General Duty	DB	1400	55	1.40	1.83	1163	2,563	100	●	●	⊖
	DB	1450	57	1.50	1.96	1200	2,645	100	●	⊙	⊖
	DB	1550	61	1.60	2.09	1262	2,782	100	⊙	⊙	○
Heavy Duty	DB	1450	57	1.40	1.83	1467	3,234	100	●	⊙	⊖
	DB	1500	59	1.50	1.96	1518	3,346	100	⊙	⊙	○
								kg	4362	4092	3462
								lb	9,617	9,022	7,633

The above loads are in compliance with hydraulic excavator standard EN474-5:2006 + A3:2013, they do not exceed 87% of hydraulic lifting capacity or 75% of tipping capacity with front linkage fully extended at ground line with bucket curled.

Capacity based on ISO 7451:2007.

Bucket weight with General Duty tips.

### Maximum Material Density:

- 2100 kg/m<sup>3</sup> (3,500 lb/yd<sup>3</sup>)
- ⊙ 1800 kg/m<sup>3</sup> (3,000 lb/yd<sup>3</sup>)
- ⊖ 1500 kg/m<sup>3</sup> (2,500 lb/yd<sup>3</sup>)
- 1200 kg/m<sup>3</sup> (2,000 lb/yd<sup>3</sup>)

Caterpillar recommends using appropriate work tools to maximize the value customers receive from our products. Use of work tools, including buckets, which are outside of Caterpillar's recommendations or specifications for weight, dimensions, flows, pressures, etc. may result in less-than-optimal performance, including but not limited to reductions in production, stability, reliability, and component durability. Improper use of a work tool resulting in sweeping, prying, twisting and/or catching of heavy loads will reduce the life of the boom and stick.

# 336 Hydraulic Excavator Specifications

## Attachments Offering Guide

Not all Attachments are available in all regions. Consult your Cat dealer for configurations available in your region.

Match

Working range front only

No Match

### PIN-ON ATTACHMENTS

Counterweight		6.8 mt (15,000 lb)		
Boom Type		Reach		
Stick Length		2.8 m (9'2") HD	3.2 m (10'6") HD	3.9 m (12'10")
Hydraulic Hammers	H140 S	✓	✓	✓
	H160 S	✓	✓	✓
	H180 S	✓	✓*	
Rotary Cutters		✓	✓	✓

### CAT PIN GRABBER COUPLER ATTACHMENTS

Counterweight		6.8 mt (15,000 lb)		
Boom Type		Reach		
Stick Length		2.8 m (9'2") HD	3.2 m (10'6") HD	3.9 m (12'10")
Hydraulic Hammers	H140 S	✓	✓	✓
	H160 S	✓	✓	
Rotary Cutters		✓	✓	✓

### BOOM-MOUNT ATTACHMENTS

Counterweight		6.8 mt (15,000 lb)		
Boom Type		Reach		
Mobile Scrap and Demolition Shears	S2070	✓		✓
	S2090	✓*		✓

# 336 Hydraulic Excavator Specifications

## Standard and Optional Equipment

Standard and optional equipment may vary. Consult your Cat dealer for details.

	Standard	Optional		Standard	Optional
<b>BOOMS, STICKS AND LINKAGES</b>			<b>ELECTRICAL SYSTEM</b>		
6.5 m (21'4") Reach boom		✓	Maintenance-free 1,000 CCA batteries (×2)	✓	
2.8 m (9'2") Reach stick		✓	Centralized electrical disconnect switch	✓	
3.2 m (10'6") Reach stick		✓	LED exterior chassis and boom lights	✓	
3.9 m (12'10") Reach stick		✓	Premium surround working lights		✓
DB family bucket linkage without lifting eye		✓	<b>ENGINE</b>		
<b>CAT TECHNOLOGY</b>			3000 m (9,842 ft) altitude capability	✓	
VisionLink®**	✓		115 Amp alternator	✓	
Remote Flash	✓		Cold start block heater		✓
Remote Troubleshoot	✓		Three selectable modes: Power, Smart, Eco	✓	
Cat Grade connectivity		✓	Auto engine speed control	✓	
Compatibility with radios and base stations from Trimble, Topcon, and Leica	✓		52° C (126° F) high-ambient cooling	✓	
Capability to install 3D grade systems from Trimble, Topcon, and Leica	✓		Hydraulic reverse fan	✓	
Cat Grade 2D	✓		-18° C (0° F) cold start capability	✓	
Cat Grade 2D with Attachment Ready Option (ARO)		✓	Double element air filter with integrated pre-cleaner	✓	
Cat Grade with 3D single GNSS		✓	Dual stage four micron main filter	✓	
Cat Grade with 3D dual GNSS		✓	10 micron primary filter with water separator	✓	
Cat Assist:	✓		Electric fuel priming pump	✓	
– Grade Assist			Secure start with PIN code	✓	
– Boom Assist			Remote disable	✓	
– Bucket Assist					
– Swing Assist					
Cat Payload:	✓				
– Static weigh					
– Semiautomatic calibration					
– Payload/cycle information					
– USB reporting capability					
Laser catcher		✓			
Work tool recognition	✓				
Work tool tracking*	✓				
Cat Tilt Rotator (TRS) Integration		✓			
Operator Coaching		✓			

(continued on next page)

\*Connect subscription only. Additional subscriptions are available. Contact your Cat dealer for availability.



## Standard and Optional Equipment (continued)

Standard and optional equipment may vary. Consult your Cat dealer for details.

	Standard	Optional		Standard	Optional
<b>HYDRAULIC SYSTEM</b>			<b>SERVICE AND MAINTENANCE</b>		
Boom and stick regeneration circuit	✓		Integrated vehicle health management system	✓	
Electronic main control valve	✓		Grouped engine oil and fuel filters	✓	
Auto hydraulic oil warmup	✓		Scheduled Oil Sampling (S·O·S <sup>SM</sup> ) ports	✓	
Bio hydraulic oil capability	✓		<b>UNDERCARRIAGE AND STRUCTURES</b>		
Reverse swing damping valve	✓		Standard undercarriage	✓	
Auto swing parking brake	✓		Towing eye on base frame	✓	
High performance hydraulic return filter	✓		Full-length track guiding guards		✓
Two speed travel	✓		Center track guiding guards		✓
Combined two-way auxiliary circuit		✓	Swivel guard	✓	
Combined two-way auxiliary circuit with hammer return filter		✓	HD bottom guard	✓	
Medium-pressure auxiliary circuit		✓	HD travel motor guards	✓	
Quick coupler circuit for Cat Pin Grabber		✓	Grease lubricated track	✓	
Hydraulic efficiency monitoring		✓	6.8 mt (15,000 lb) counterweight	✓	
<b>SAFETY AND SECURITY</b>			600 mm (24") double grouser track shoes		✓
Cat Command (remote control)		✓	700 mm (28") triple grouser track shoes		✓
2D E-Fence:	✓		800 mm (31") triple grouser track shoes		✓
– E-ceiling					
– E-floor					
– E-swing					
– E-wall					
– E-cab avoidance					
Auto hammer stop	✓				
Caterpillar One Key security system	✓				
Lockable external tool/storage box	✓				
Lockable door, fuel, and hydraulic tank locks	✓				
Lockable fuel drain compartment	✓				
Service platform with anti-skid plate and recessed bolts	✓				
Right Hand (RH) handrail and handhold	✓				
Signaling/warning horn	✓				
Travel alarm		✓			
Swing alarm		✓			
Ground-level secondary engine shutoff switch	✓				
Lockable disconnect switch	✓				
Rear and right-hand-sideview cameras	✓				
360° visibility		✓			
Operator Protective Guards		✓			
Inspection lighting	✓				

## Dealer Installed Kit and Attachments

Attachments may vary. Consult your Cat dealer for details.

---

<b>CAB</b> <ul style="list-style-type: none"><li>• Horizontal joystick sliders</li><li>• Lower radial wiper</li><li>• Left Hand (LH)/RH electrical pedal for tool control</li><li>• Rain protector for front windshield and cab light cover</li><li>• Polycarbonate roof hatch</li></ul>	<b>ELECTRICAL</b> <ul style="list-style-type: none"><li>• Premium surround working lights</li></ul> <b>GUARDS</b> <ul style="list-style-type: none"><li>• Side rubber bumper guard</li><li>• Mesh guard full front</li><li>• Mesh guard half front</li><li>• Full protecting vandalism guard</li></ul>	<b>SAFETY AND SECURITY</b> <ul style="list-style-type: none"><li>• Bluetooth® receiver kit</li><li>• Bluetooth key fob</li><li>• Operator Protective Guards</li><li>• P5A laminated glass</li><li>• Cat Detect – People Detection</li><li>• Cat Command – Remote control kit</li></ul>
--	--	--

	Deluxe	Premium (2P)	Premium (1P)
ROPS	●	●	●
High-resolution 203 mm (8") LCD touchscreen monitor	●	X	X
High-resolution 254 mm (10") LCD touchscreen monitor	○	●	●
Auto bi-level air conditioner	●	●	●
Jog dial and shortcut keys for monitor control	●	●	●
Keyless push-to-start engine control	●	●	●
Height-adjustable console	●	●	●
Tilt-up left-side console	●	●	●
Heated air-suspension seat	●	X	X
Heated and ventilated air-suspension seat	X	●	●
51 mm (2") seat belt	●	●	●
Monitor integrated Bluetooth radio with USB/Auxiliary ports	●	●	●
12V DC outlets	●	●	●
Document storage	●	●	●
Overhead storage and rear storage with nets	●	●	●
Beverage holder	●	●	●
Cup holder	●	●	●
Openable two-piece front window	●	●	○
One piece front windshield	X	○	●
Rear window emergency exit	●	●	●
Radial wiper with washer	●	X	X
Parallel wiper	X	●	●
Openable polycarbonate skylight hatch	●	●	X
Laminated roof glass	X	X	●
LED dome light	●	●	●
Floor welcome light	●	●	●
Roof sunscreen	●	●	●
Roller front sunscreen	●	●	●
Roller rear sunscreen	○	●	●
Washable floor mat	●	●	●
Beacon ready	●	●	●
Cat Stick Steer	○	○	○
Auxiliary relay	○	○	○

- Standard
- Optional
- X Not available

# 336 Environmental Declaration

The following information applies to the machine at the time of final manufacture as configured for sale in the regions covered in this document. The content of this declaration is valid as of the date issued; however, content related to machine features and specifications are subject to change without notice. For additional information, please see the machine's Operation and Maintenance Manual.

For more information on sustainability in action and our progress, please visit <https://www.caterpillar.com/en/company/sustainability>.

## Engine

- The Cat® C7.1 TTA engine meets U.S. EPA Tier 4 Final, EU Stage V, and Japan 2014 emission standards.
- Cat diesel engines are required to use ULSD (ultra-low sulfur diesel fuel with 15 ppm of sulfur or less) or ULSD blended with the following lower-carbon intensity fuels\*\* up to:
  - ✓ 20% biodiesel FAME (fatty acid methyl ester)\*
  - ✓ 100% renewable diesel, HVO (hydrogenated vegetable oil) and GTL (gas-to-liquid) fuels

Refer to guidelines for successful application. Please consult your Cat dealer or "Caterpillar Machine Fluids Recommendations" (SEBU6250) for details.

*\*Engines with no aftertreatment devices can use higher blends, up to 100% biodiesel.*

*\*\*Tailpipe greenhouse gas emissions from lower-carbon intensity fuels are essentially the same as traditional fuels.*

## Air Conditioning System

- The air conditioning system on this machine contains the fluorinated greenhouse gas refrigerant R134a (Global Warming Potential = 1430). The system contains 1.0 kg (2.2 lb) of refrigerant which has a CO<sub>2</sub> equivalent of 1.430 metric tonnes (1.576 tons).

## Paint

- Based on best available knowledge, the maximum allowable concentration, measured in parts per million (PPM), of the following heavy metals in paint are:
  - Barium < 0.01%
  - Cadmium < 0.01%
  - Chromium < 0.01%
  - Lead < 0.01%

## Sound Performance

ISO 6395:2008 (external) 105 dB(A)

ISO 6396:2008 (inside cab) 72 dB(A)

- Hearing protection may be needed when operating with an open operator station and cab (when not properly maintained or doors/windows open) for extended periods or in a noisy environment.

## Oils and Fluids

- Caterpillar factory fills with ethylene glycol coolants. Cat Diesel Engine Antifreeze/Coolant (DEAC) and Cat Extended Life Coolant (ELC) can be recycled. Consult your Cat dealer for more information.
- Cat Bio HYDO™ Advanced is an EU Ecolabel approved biodegradable hydraulic oil.
- Additional fluids are likely to be present, please consult the Operations and Maintenance Manual or the Application and Installation guide for complete fluid recommendations and maintenance intervals.

## Features and Technology

- The following features and technology may contribute to fuel savings and/or carbon reduction. Features may vary. Consult your Cat dealer for details.
  - Advanced hydraulic systems balance power and efficiency
  - Smart mode matches machine power to digging requirements automatically
  - Eco mode minimizes fuel consumption for light applications
  - Standard Cat technologies improve operator efficiency by up to 45%
  - Reduce fuel consumption with the high-efficiency hydraulic fan that cools the engine on demand
  - Cut costs with extended maintenance intervals

## Recycling

- The materials included in machines are categorized as below with approximate weight percentage. Because of variations of product configurations, the following values in the table may vary.

Material Type	Weight Percentage
Steel	85.02%
Iron	7.33%
Nonferrous Metal	1.82%
Mixed Metal	0.02%
Mixed-Metal and Nonmetal	0.80%
Plastic	1.07%
Rubber	0.16%
Mixed Nonmetallic	0.16%
Fluid	2.11%
Other	1.49%
Uncategorized	0.00%
Total	100%

- A machine with higher recyclability rate will ensure more efficient usage of valuable natural resources and enhance End-of-Life value of the product. According to ISO 16714:2008 (Earthmoving machinery – Recyclability and recoverability – Terminology and calculation method), recyclability rate is defined as percentage by mass (mass fraction in percent) of the new machine potentially able to be recycled, reused, or both.

All parts in the bill of material are first evaluated by component type based on a list of components defined by the ISO 16714:2008 and Japan CEMA (Construction Equipment Manufacturers Association) standards. Remaining parts are further evaluated for recyclability based on material type.

Because of variations of product configurations, the following value in the table may vary.

Recyclability – 98%

For more complete information on Cat products, dealer services, and industry solutions, visit us on the web at [www.cat.com](http://www.cat.com)

© 2023 Caterpillar  
All rights reserved

Materials and specifications are subject to change without notice. Featured machines in photos may include additional equipment. See your Cat dealer for available options.

CAT, CATERPILLAR, LET'S DO THE WORK, their respective logos, "Caterpillar Corporate Yellow," the "Power Edge" and Cat "Modern Hex" trade dress as well as corporate and product identity used herein, are trademarks of Caterpillar and may not be used without permission. VisionLink is a trademark of Caterpillar Inc., registered in the United States and in other countries.

AEXQ3380-02 (11-2023)  
Replaces AEXQ3380-01  
Build Number: 08C  
(Japan)

