



**320/320 GC**  
**MEDIUM HYDRAULIC EXCAVATORS**  
**PARTS REFERENCE GUIDE**  
SERIAL NUMBER PREFIX: HEX, MYK, KTN, LKS

**LET'S DO THE WORK.™**




# PROTECT YOUR INVESTMENT WITH GENUINE CAT® PARTS

Thank you for selecting the Cat® Medium Hydraulic Excavator.

This guide is designed to provide you with a quick reference for the parts and part numbers you need to keep your Cat medium hydraulic excavator operating at peak efficiency. Always read and understand the machine's Operation and Maintenance Manual prior to performing any type of maintenance.

## MAINTENANCE

Proactive preventative maintenance extends the life of your machine and protects your investment. Only Caterpillar knows Cat equipment's filtration and lubrication requirements and offers parts kits to match your machine's maintenance cycles.

SCHEDULED MAINTENANCE PARTS	
	GREASES
	PLANNED MAINTENANCE

## REPLACEMENT PARTS

Proper maintenance minimizes the need for repair and replacement. In the event that replacement parts are required, the use of genuine Cat parts helps maximize machine performance and maintains high resale value.

<b>WEAR PARTS</b>
COMMON GROUND ENGAGING TOOLS
<b>MINOR REPAIR PARTS</b>
CAB GLASS AND ACCESSORIES
MIRRORS AND LIGHTS
<b>OCCASIONAL REPAIR PARTS</b>
UNDERCARRIAGE
ENGINE PARTS
PUMPS AND MOTORS
<b>UPGRADES/ENHANCEMENTS</b>
UPGRADE KITS
<b>LINKAGE</b>
LINKAGE PINS, BEARINGS, AND HARDWARE

## GREASES

Previous Cat Product Name	STANDARD MAINTENANCE GREASES		
	Cat Ultra5 Moly #1	Cat Ultra5 Moly #2	Cat Advanced 3 Moly
Current Cat Product Name	Cat Extreme Application Grease 1	Cat Extreme Application Grease 2	Cat Prime Application Grease
Grade (NLGI)	1	2	2
Melting Point C° (F°)	260 (500)	260 (500)	260 (500)
Ambient Temperature C° (F°)	-35 to +40 (-31 to +104)	30 to +50 (-22 to +122)	-20 to +40 (-4 to +104)
Base Oil Type	Mineral	Mineral	Mineral
Color	Dark Grey	Dark Grey	Dark Grey
Cartridge (390 g / 14 oz)	452-5996	452-6001	452-6006
Plastic Pail (5 kg / 11 lb)	-	-	-
Plastic Pail (16 kg / 35 lb)	452-5999	452-6004	452-6009
Keg (55 kg / 120 lb)	452-5998	452-6003	452-6008
Drum (180 kg / 400 lb)	452-5997	452-6002	452-6007



GREASES FOR UNIQUE APPLICATIONS AND ENVIRONMENTS			
Cat Arctic Platinum	Cat Desert Gold	Cat Multipurpose	Hammer Paste
Cat Extreme Application Grease - Arctic	Cat Extreme Application Grease - Desert	Cat Utility Grease	
0	2	2	2
230 (446)	280 (536)	260 (500)	230 (446)
-35 to +40 (-31 to +104)	30 to +50 (-22 to +122)	-30 to +40 (-22 to +104)	-20 to +1100 (-4 to +2012)
Semi-Synthetic	Mineral	Mineral	Mineral
Dark Grey	Dark Grey	Blue	Bronze
508-2184	452-6016	452-6011	130-6951 (standard) 317-8491 (autolube)
-	-	-	133-8807
508-2187	452-6019	452-6014	-
508-2186	452-6018	452-6013	-
508-2185	452-6017	452-6012	-



# PLANNED MAINTENANCE

EXCAVATOR		Initial 500 Hours			
		Engine Oil/Filter Change		Final Drive Oil	Swing Drive
Sales Model	Serial Number Prefix	Filter Element	Oil Quantity - Liter (Gallon) DEO-ULS™	Final Drive Oil Quantity, each - Liter (Gallon) TDTO	Swing Drive Oil Quantity - Liter (Gallon) TDTO
320	HEX	322-3155	15 (4)	5 (1.3)	5 (1.3)
	MYK				
320 GC	KTN				
	LKS				

EXCAVATOR		Initial 500 or 1000 Hours*					
		Engine Oil/Filter Change		Fuel Filter			
Sales Model	Serial Number Prefix	Filter Element	Oil Quantity - Liter (Gallon) DEO-ULS™	In-line Element / Strainer	Primary Element	Secondary Element	
320	HEX00001 - HEX10000	322-3155	15 (4)	525-6206	479-4131	360-8960	
	HEX10001 - HEX99999				-	523-4987	509-5694
	MYK			525-6206		479-4131	360-8960
320 GC	KTN00001-KTN10000				-	523-4987	509-5694
	KTN10001 -KTN99999						
	LKS						

\*Engine Oil Change and Fuel filter intervals are 1000 hours for most 320 and 320GC machines built starting around 2019. Check Operation and Maintenance Manual for your specific machine.

## NGH Interval Table

Reference: Operation and Maintenance Manual, "S•O•S Information"  
Use the table below to determine the appropriate oil and filter change interval.

SELECTION OF OIL AND FILTER CHANGE INTERVAL				
	Conditions			Interval
	Cat® Recommended Fluids	Cat® Filters	S•O•S Services	
Standard Service Application	Yes	Yes	Yes	1000 hours
	Yes	Yes	No	500 hours
	Yes	No	Yes	500 hours
	No	Yes	Yes	500 hours
	No	No	No	250 hours
Severe Service Application	No	No	No	250 hours
	Yes	Yes	No	250 hours
	Yes	Yes	Yes	Use S•O•S <sup>(1)</sup>
	Yes	No	Yes	Use S•O•S <sup>(1)</sup>
	No	Yes	Yes	Use S•O•S <sup>(1)</sup>

EXCAVATOR		Every 1000 Hours
		Swing Drive
Sales Model	Serial Number Prefix	Swing Drive Oil Quantity - Liter (Gallon) TDTO
320	HEX	5 (1.3)
	MYK	
320 GC	KTN	
	LKS	

EXCAVATOR		Every 1500 Hours*
		Diesel Exhaust Fluid (DEF) Filter Replacement
Sales Model	Serial Number Prefix	DEF Pump Filter
320	HEX	495-1507
320 GC	KTN	

\*Not applicable to MYK and LKS prefixes



# PLANNED MAINTENANCE

EXCAVATOR		Every 2000 Hours		
		Final Drive Oil Change	Fuel Tank Maintenance	Engine Crankcase
Sales Model	Serial Number Prefix	Final Drive Oil Quantity, each - Liter (Gallon) TDTO	Fuel Tank Cap	Breather Kit
320	HEX	5 (1.3)	350-7735	339-1048
320	MYK			
320 GC	KTN			
320 GC	LKS			

EXCAVATOR		Every 3000 Hours	
		Hydraulic Filter Change	
Sales Model	Serial Number Prefix	Hydraulic Return Filter	
320	HEX	590-9787	
320	MYK		
320 GC	KTN		
320 GC	LKS		

EXCAVATOR		Every 5000 Hours*		
		DEF System Maintenance		
Sales Model	Serial Number Prefix	DEF Injector	DEF Injector Gasket	DEF Filter
320	MYK	529-7539	418-2073	379-3187
320 GC	LKS			

\*Not applicable to HEX and KTN prefixes.



EXCAVATOR		As-Needed and High Interval Parts						
		Engine Air		Cabin Air		Hydraulic Oil Change	Engine Coolant	
Sales Model	Serial Number Prefix	Primary Element	Secondary Element	Fresh Air Element	AC/Recirculating Air Filter	Hydraulic Oil Quantity - Liters (gallons)	Breather Element	Cat® ELC Coolant Extender
320	HEX	479-8989	479-8991	580-5439	500-0957	115 (30)	522-1451	119-5152
	MYK							
320 GC	KTN							
	LKS							



## CAB ACCESSORIES

Sales Model	Serial Number Prefix	Part Description	Part Number
320 GC	KTN	Bluetooth Receiver Kit	528-3285
320	HEX, MYK	Cabin Air Duct	487-6665
320 GC	KTN, LKS		
320	MYK	Control Pedal	486-5504
320 GC	LKS		
320	HEX	Dual Exit Rear Window Kit	528-3282
320 GC	KTN		
320	HEX, MYK		
320 GC	KTN, LKS	Electric Horn	490-2682
320	HEX		
320 GC	KTN	Electric Pedal 2-Way Kit (Left)	528-3280
320	HEX, MYK		
320 GC	KTN, LKS	Electric Pedal 2-Way Kit (Right)	528-3281
320	HEX		
320 GC	KTN	Falling Objects Guard Kit	605-8365
320	HEX, MYK		
320 GC	KTN, LKS	Front Window Guard	493-1071
320	HEX		
320 GC	KTN	Front Window Guard (Lower)	316-8836
320	HEX		
320	HEX	Jump Start Wiring Kit	528-3286
320 GC	KTN		
320	HEX	Mesh Windshield Guard Kit (Front, Full)	528-3292
320 GC	KTN		
320	HEX	Mesh Windshield Guard Kit (Front, Half)	528-3293
320 GC	KTN		
320	HEX	Radial Lower Wiper Kit	528-3279
320 GC	KTN		
320	HEX, MYK		
320 GC	KTN, LKS	Radio	488-6824
320	HEX		
320 GC	KTN	Rain Visor Kit	528-3283
320	HEX, MYK		
320 GC	KTN, LKS	Rear Window Screen	488-6450
320	HEX, MYK		
320 GC	KTN, LKS	Roof Hatch	483-7867
320	HEX		
320 GC	KTN	Roof Hatch Kit	528-3289
320	HEX, MYK		
320 GC	KTN, LKS	Seat Belt	528-7420
320	HEX, MYK		
320 GC	KTN, LKS	Side Rubber Bumper Kit	528-3290
320	HEX, MYK		
320 GC	KTN, LKS	Step	488-9289
320	HEX, MYK		
320 GC	KTN, LKS	Sun Screen	487-6672
320	HEX, MYK		
320 GC	KTN, LKS	Swivel Guard	134-8875
320	HEX, MYK		
320 GC	KTN, LKS	Swivel Guard Kit	471-1985
320	HEX		
320 GC	KTN	Vandalism Guard Kit	486-5404
320	HEX		
320 GC	KTN	Window (Door)	538-8843
320	HEX, MYK		
320 GC	KTN, LKS	Window (Front, 1 Piece)	486-5406
320	HEX, MYK		
320 GC	KTN, LKS	Window (Front, Upper, Lower, 2 piece)	477-7563
320	HEX, MYK		
320 GC	KTN, LKS	Window (Side and Rear)	477-7564
320	HEX, MYK		
320 GC	KTN, LKS	Window Wiper (Lower)	575-8671
320	HEX, MYK		
320 GC	KTN, LKS	Window Wiper (Upper)	486-5407
320	HEX, MYK		

## GROUND ENGAGING TOOLS

Description	Heavy Duty J Series		K Series		CAT® Advansys™	
	J300	J350	K80	K90	Advansys 80	Advansys 90
Penetration Plus	183-5300	168-1359	475-5470	475-5482	505-4083	505-4097
General Purpose	1U-3302	1U-3352	475-5473	475-5484	505-4086	505-4096
Heavy Duty	–	–	–	–	505-3982	505-3996
Heavy Duty Long Life (ARM)	–	–	–	–	505-3983	505-3993
Leveling Edge Conversion (LEC)	–	–	–	–	505-3985	505-3995
Wide	107-3300	107-3350	475-5474	475-5485	505-4080	505-4090
Penetration	9J-4309	9J-4359	475-5469	475-5481	505-4081	505-4091
Penetration Long Life (ARM)	125-8309	119-9359	475-5478	475-5489	505-4082	505-4092
Extra Duty Long Life (ARM)	–	–	475-5477	475-5488	–	–
Extra Duty	–	–	475-5468	475-5480	–	–
Spike	168-1300	168-1350	475-5471	475-5483	505-4084	505-4098
Double Spike	135-9308	135-9357	475-5472	475-5491	–	–
Pin	132-4766	114-0358	–	–	–	–
Retainer	149-5733	114-0359	220-9090	220-9090	–	–

## MIRRORS

Sales Model	Serial Number Prefix	Part Description	Part Number
320	HEX, MYK	Side View Mirror	505-7176
320 GC	KTN, LKS		
320	HEX, MYK	Rear View Mirror (Use with Front Window Guard)	327-6553
320 GC	KTN, LKS		
320	HEX, MYK	Rear View Mirror (Use without Front Window Guard)	327-6552
320 GC	KTN, LKS		

## LIGHTS

Sales Model	Serial Number Prefix	Part Description	Part Number
320	HEX	LED Light Kit	528-3288
320 GC	KYN		
320	HEX, MYK	Flood Light	577-3907
320 GC	KTN, LKS		
320	HEX, MYK	Flood Light , Reach Boom (Right)	577-3927
320 GC	KTN, LKS		
320	HEX, MYK	Flood Light , Reach Boom (Left)	577-3925
320 GC	KTN, LKS		
320	HEX, MYK	Dome Light	431-9515
320 GC	KTN, LKS		
320	HEX, MYK	LED Flood Light , Cab	577-3857
320 GC	KTN, LKS		
320	HEX, MYK	Foot Light , Cab	528-0022
320 GC	KTN, LKS		
320	HEX, MYK	LED Flood Light , Cab	577-3853
320 GC	KTN, LKS		
320	HEX, MYK	Warning Beacon Light	526-5422
320 GC	LKS		

## UNDERCARRIAGE

Machine Model		Undercarriage			
Sales Model	Serial Number Prefix	Rollers	Sprockets	Steel Track Assembly	Steel Track Shoe
320	HEX	8E-5600 Track Carrier 461-7552 Single Flange	8E-9805	359-3119 790mm, Triple Grouser Shoe, Grease Lubricated Track	341-6797 (Link Assembly) 332-8903 (Shoe) 9W-3619 (Bolt) 9W-3361 (Nut)
320	MYK	8E-5600 Track Carrier 508-9458 Single Flange			
320 GC	LKS	8E-5600 Track Carrier 479-7449 Single Flange			
320 GC	KTN	8E-5600 Track Carrier 461-7552 Single Flange		569-9764 790mm, Triple Grouser Shoe, Grease Lubricated Track	569-9755 (Link Assembly) 332-8903 (Shoe) 9W-3619 (Bolt) 9W-3361 (Nut)
320 GC	KTN	8E-5600 Track Carrier 461-7552 Single Flange		524-6582 790mm, Triple Grouser Shoe, Grease Lubricated Track	524-6579 (Link Assembly) 332-8903 (Shoe) 9W-3619 (Bolt) 9W-3361 (Nut)

## ENGINE PARTS

Sales Model	Serial Number Prefix	Starter Motor			Battery		Alternator			Water Pump			Fuel Injector Pump			Turbocharger			Fuel Injector			Glow Plug	
		New	Reman	Quantity	New	Quantity	New	Reman	Quantity	New	Reman	Quantity	New	Reman	Quantity	New	Reman	Quantity	New	Reman	Quantity	New	Quantity
320	MYK	432-1691	20R-4881	2	263-9574	2	352-4700	20R-0959	1	380-1659	-	1	526-3470	-	1	556-7921 574-4249 566-8180	-	1	571-0940 571-0939	-	4	462-2238	4
320	HEX						421-3007 587-3239	1	370-8364				20R-4784	1	1	4		370-7280	20R-2476	4			
320 GC	KTN						344-5081	20R-0958	1				556-7921	1	4	418-3229		-	4				
320 GC	LKS						526-3470	-	1				571-0940	-	4	462-2235		4					

# PUMPS AND MOTORS

Sales Model	Serial Number Prefix	Auxiliary Pump			Swing Motor			Travel Motor		
		New	Reman	Quantity	New	Reman	Quantity	New	Reman	Quantity
320	MYK	565-0290	-	1	515-6105	-	1	593-5126	11R-1020	2
320	HEX		-			-		593-5126 593-5123		
320 GC	KTN		-			-		593-5126 593-5123 582-9758		
320 GC	LKS		-			-		593-5126 582-9758		

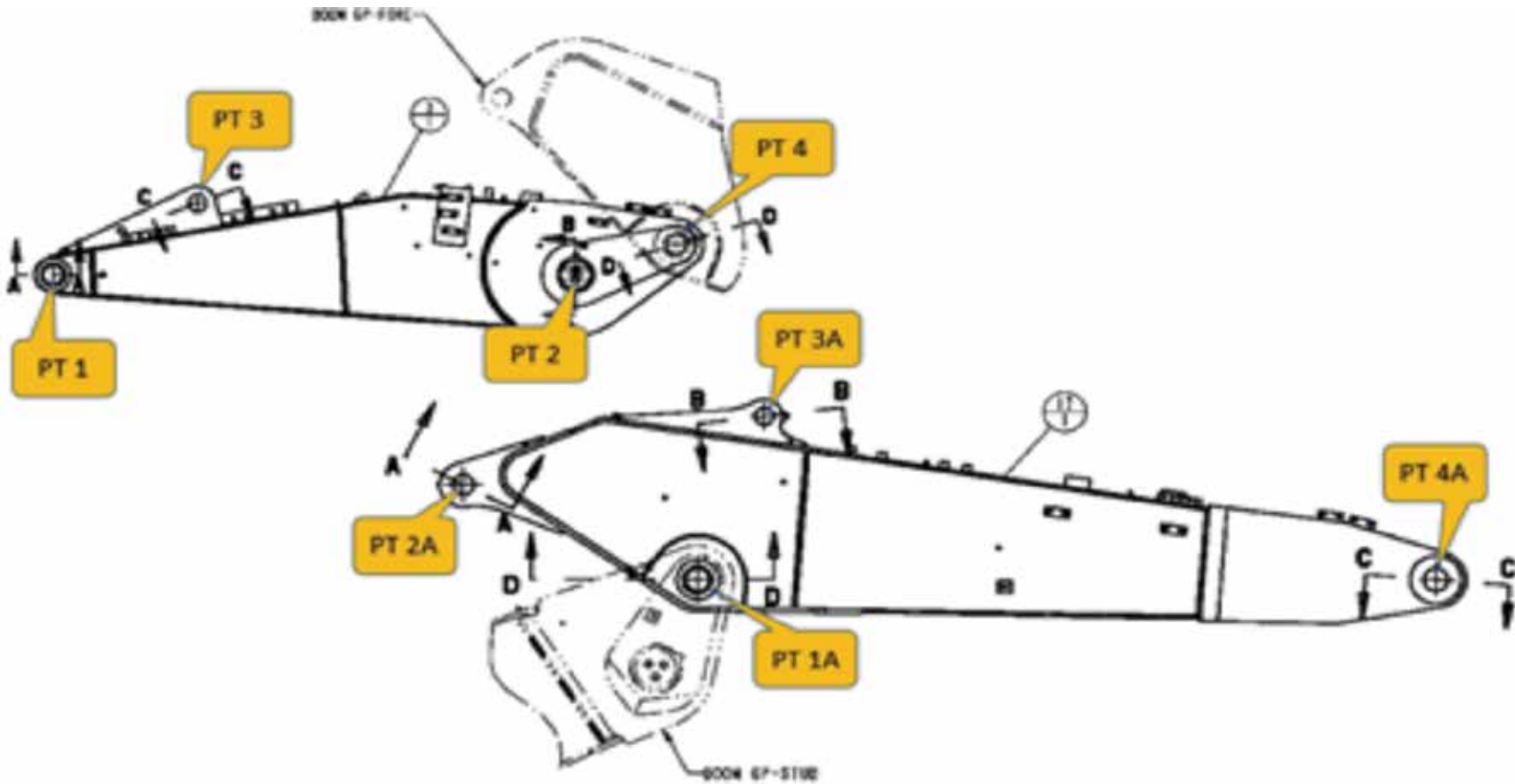
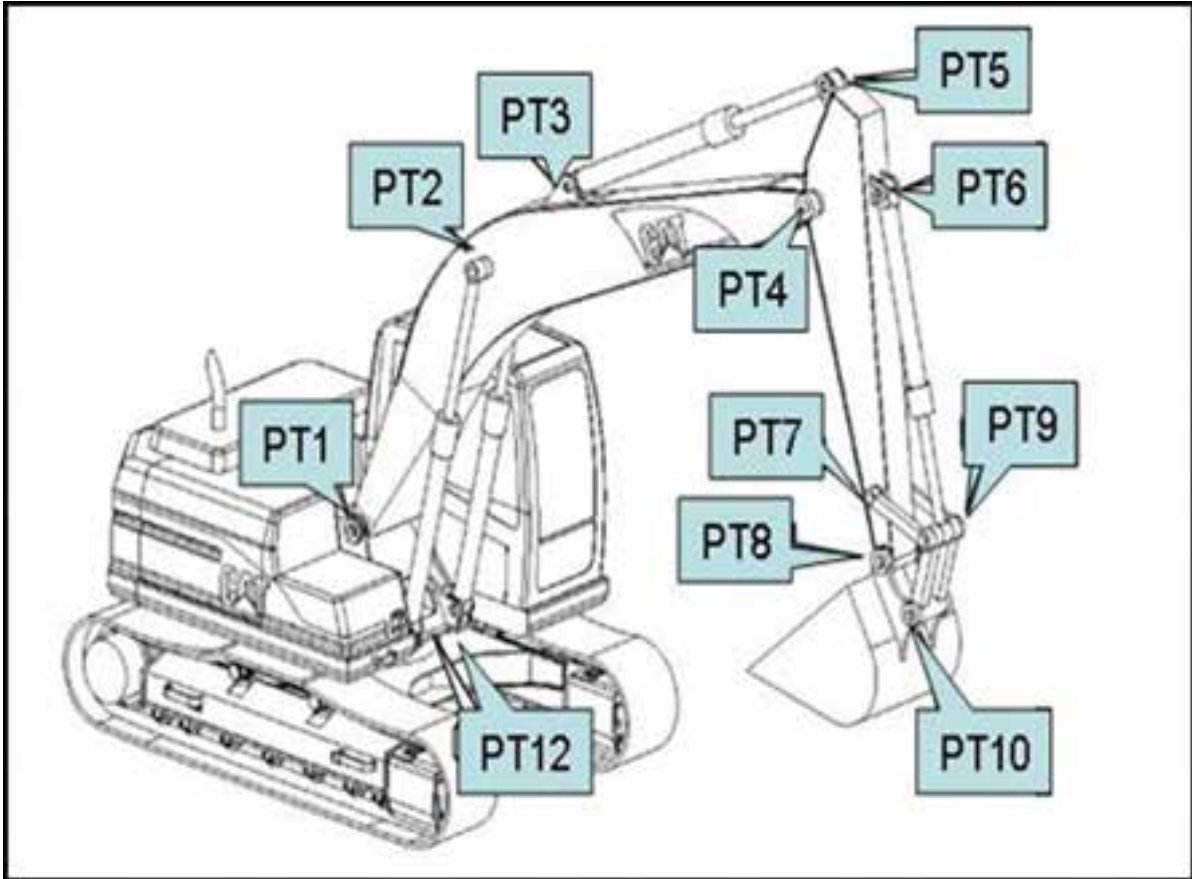


# UPGRADE KITS

These kits update your machine by adding a new feature. Contact your local Cat Dealer for details.

Sales Model	Serial Number Prefix	Category	Part Description	Part Number	
320	HEX	Security	Vandalism Guard	486-5404	
			Falling Objects Guard	605-8365	
		Safety and Visibility	Personnel Detection	615-1978	
			Premium LED Light	528-3288	
			Roof Hatch	528-3289	
			Radial Lower Wiper	528-3279	
			Dual Exit Rear Window	528-3282	
			Rain Visor	528-3283	
			Mesh Windshield Guard	(Full Front)	528-3292
				(Half Front)	528-3293
	Two-Way Pedal	(Left)	528-3280		
		(Right)	528-3281		
	Performance and Productivity	Remote Control	On-Board	602-7891	
			Vision System	593-3811	
			Console (2.4 Ghz)	558-5654	
			Console (900 Ghz)	558-5655	
	Maintenance Improvement	Jump Start Wiring	528-3286		
	Protection	Side Rubber Bumper	528-3290		
		Swivel Guard	471-1985		
	MYK	Safety and Visibility	Personnel Detection	615-1978	
Falling Objects Guard			605-8365		
Performance and Productivity		Remote Control	On-Board	602-7891	
			Vision System	593-3811	
Protection	Side Rubber Bumper	528-3290			
320 GC	KTN	Security	Vandalism Guard	486-5404	
			Radial Lower Wiper	528-3279	
		Safety and Visibility	Dual Exit Rear Window	528-3282	
			Rain Visor	528-3283	
			Premium LED Light	528-3288	
			Roof Hatch	528-3289	
			Mesh Windshield Guard	(Full Front)	528-3292
				(Half Front)	528-3293
			Falling Objects Guard	605-8365	
			Performance and Productivity	Two-Way Pedal	(Left)
	(Right)	528-3281			
	Comfort and Convenience	Bluetooth Receiver	528-3285		
	Maintenance Improvement	Jump Start Wiring	528-3286		
	Protection	Swivel Guard	471-1985		
Side Rubber Bumper		528-3290			
LKS	Safety and Visibility	Falling Objects Guard	605-8365		
	Protection	Side Rubber Bumper	528-3290		

# LINKAGE PINS





# LINKAGE PINS

Sales Model	Serial Number Prefix	Configuration			PT1	PT2	PT3	PT4	PT5	PT6	PT7	PT8	PT9	PT10	PT12
		Linkage Type	Boom Type	Stick Type	Boom Foot	Boom Cylinder Rod End	Stick Cylinder Head End	Boom Nose or Stick Pivot	Stick Cylinder Rod End	Bucket Cylinder Head End	Idler Link Stick End	Stick Nose	Bucket Cylinder Rod End	Power Link Bucket End	Boom Cylinder Head End
320	HEX	B1 Family	Super Long Reach	Super Long Reach	343-9295 Pin	437-3391 Pin	4I-4618 Pin	564-9028 Pin	4I-4618 Pin	127-3913 Pin	492-8533 Pin	087-5805 Pin	492-8534 Pin	087-5805 Pin	154-0480 Pin (Quantity 2)
		Without Lifting Eye	Reach, Heavy Duty, Grade Control	Reach, B1 Family, Heavy Duty, Grade Control	343-9295 Pin	437-3391 Pin	4I-4809 Pin	346-7276 Pin	4I-4809 Pin	4I-4811 Pin	7I-6843 Pin	517-6026 Pin	Link	517-6026 Pin	154-0480 Pin (Quantity 2)
		With Lifting Eye	Variable Adjustable Boom (VAB)	Reach	343-9295 Pin	Stub (PT2) 437-3391 Pin Fore (PT2A) 4I-4621 Pin	Stub (3) 4I-4621 Pin Fore (3A) 4I-4618 Pin	Stub (4) 264-1702 Pin Fore (4A) 564-9028 Pin	4I-4809 Pin	4I-4811 Pin	559-0427 Pin	517-6026 Pin	559-0428 Pin	517-6026 Pin	154-0480 Pin (Quantity 2)
		B1 Family	VAB	Reach	343-9295 Pin	Stub (PT2) 437-3391 Pin Fore (PT2A) 4I-4621 Pin	Stub (3) 4I-4621 Pin Fore (3A) 4I-4618 Pin	Stub (4) 264-1702 Pin Fore (4A) 564-9028 Pin	4I-4809 Pin	4I-4811 Pin	254-3052 Pin	087-5805 Pin	254-3053 Pin	087-5805 Pin	154-0480 Pin (Quantity 2)
		B1 Family	Super Long Reach	Super Long Reach	343-9295 Pin	437-3391 Pin	4I-4618 Pin	564-9028 Pin	4I-4618 Pin	127-3913 Pin	7I-6843 Pin	086-0523 Pin	248-7820 Pin	086-0523 Pin	154-0480 Pin (Quantity 2)
320	MYK	With Lifting Eye	Super Long Reach, Grade Control	Super Long Reach, Grade Control	343-9295 Pin	437-3391 Pin	4I-4618 Pin	564-9028 Pin	4I-4618 Pin	127-3913 Pin	7I-6843 Pin	517-6026 Pin	248-7820 Pin	517-6026 Pin	154-0480 Pin (Quantity 2)
		B1 Family, With Lifting Eye	Reach, Grade Control	B1 Family, Reach	343-9295 Pin	437-3391 Pin	4I-4809 Pin	564-9028 Pin	4I-4809 Pin	4I-4811 Pin	492-8533 Pin	087-5805 Pin	492-8534 Pin	087-5805 Pin	154-0480 Pin (Quantity 2)
		B1 Family, With Lifting Eye	Reach, Heavy Duty, Grade Control	B1 Family, Reach	343-9295 Pin	437-3391 Pin	4I-4809 Pin	346-7276 Pin	4I-4809 Pin	4I-4811 Pin	492-8533 Pin	087-5805 Pin	492-8534 Pin	087-5805 Pin	154-0480 Pin (Quantity 2)
		B1 Family, With Lifting Eye	VAB	B1 Family, Reach	343-9295 Pin	Stub (PT2) 437-3391 Pin Fore (PT2A) 4I-4621 Pin	Stub (3) 4I-4621 Pin Fore (3A) 4I-4618 Pin	Stub (4) 264-1702 Pin Fore (4A) 564-9028 Pin	4I-4809 Pin	4I-4811 Pin	492-8533 Pin	087-5805 Pin	492-8534 Pin	087-5805 Pin	154-0480 Pin (Quantity 2)
		B1 Family, With Lifting Eye	VAB	B1 Family, Reach	343-9295 Pin	Stub (PT2) 437-3391 Pin Fore (PT2A) 4I-4621 Pin	Stub (3) 4I-4621 Pin Fore (3A) 4I-4618 Pin	Stub (4) 264-1702 Pin Fore (4A) 346-7276 Pin	4I-4809 Pin	4I-4811 Pin y	492-8533 Pin	087-5805 Pin	492-8534 Pin	087-5805 Pin	154-0480 Pin (Quantity 2)
320 GC	KTN	B1 Family	Reach, Grade Control	Reach, B1 Family	343-9295 Pin	437-3391 Pin	4I-4809 Pin	564-9028 Pin	4I-4809 Pin	4I-4811 Pin	254-3052 Pin	087-5805 Pin	254-3053 Pin	087-5805 Pin	154-0480 Pin (Quantity 2)
		B1 Family	Reach, Grade Control	Reach, B1 Family	343-9295 Pin	437-3391 Pin	4I-4809 Pin	346-7276 Pin	4I-4809 Pin	4I-4811 Pin	254-3052 Pin	087-5805 Pin	254-3053 Pin	087-5805 Pin	154-0480 Pin (Quantity 2)
320 GC	LKS	B1 Family	Reach, Grade Control	Reach, B1 Family	343-9295 Pin	437-3391 Pin	4I-4809 Pin	564-9028 Pin	4I-4809 Pin	4I-4811 Pin	254-3052 Pin	087-5805 Pin	254-3053 Pin	087-5805 Pin	154-0480 Pin (Quantity 2)
		B1 Family	Reach, Grade Control	Reach, B1 Family	343-9295 Pin	437-3391 Pin	4I-4809 Pin	346-7276 Pin	4I-4809 Pin	4I-4811 Pin	254-3052 Pin	087-5805 Pin	254-3053 Pin	087-5805 Pin	154-0480 Pin (Quantity 2)

# BEARINGS AND BUSHINGS

Sales Model	Serial Number Prefix	Configuration			PT1	PT2	PT3	PT4	PT5	PT6	PT7	PT8	PT9	PT10	PT12	
		Linkage Type	Boom Type	Stick Type	Boom Foot	Boom Cylinder Rod End	Stick Cylinder Head End	Boom Nose or Stick Pivot	Stick Cylinder Rod End	Bucket Cylinder Head End	Idler Link Stick End	Stick Nose	Bucket Cylinder Rod End	Power Link Bucket End	Boom Cylinder Head End	
320	HEX	B1 Family	Super Long Reach	Super Long Reach	489-3008 Bearing (Quantity 2)	489-3021 Bearing (Quantity 2)	290-9180 Bushing	489-3008 Bearing (Quantity 2)	290-9180 Bushing	357-5712 Bushing	514-7655 Bearing (Quantity 2)	489-3010 Bearing (Quantity 2)	489-3018 Bearing (Quantity 2) 489-3019 Bushing	489-3020 Bearing (Quantity 2)	240-2913 Bushing (Quantity 2)	
		Without Lifting Eye	Reach, Heavy Duty, Grade Control	Reach, Heavy Duty, Grade Control	489-3008 Bearing (Quantity 2)	489-3021 Bearing (Quantity 2)	504-7638 Bearing (Quantity 2)	489-3008 Bearing (Quantity 2)	504-7638 Bearing (Quantity 2)	357-5712 Bushing	526-7667 Bearing (Quantity 2)	526-7666 Bearing (Quantity 2)	517-6017 Bearing (Quantity 2) 248-7857 Bushing	517-6019 Bearing (Quantity 2)	240-2913 Bushing (Quantity 2)	
		With Lifting Eye	Variable Adjustable Boom (VAB)	Reach	489-3008 Bearing (Quantity 2)	489-3021 Bearing (Quantity 2) (PT2)	290-9182 Bushing (PT2A)	517-5957 Bearing (3) (Field Replacement)	489-3008 Bearing (Quantity 2) (4 and 4A)	240-2914 Bushing	357-5712 Bushing	526-7667 Bearing (Quantity 2)	526-7666 Bearing (Quantity 2)	517-6017 Bearing (Quantity 2) 248-7857 Bushing	517-6019 Bearing (Quantity 2)	240-2913 Bushing (Quantity 2)
		B1 Family	VAB	Reach	489-3008 Bearing (Quantity 2)	489-3021 Bearing (Quantity 2) (PT2)	290-9182 Bushing (PT2A)	517-5957 Bearing (3) (Field Replacement)	489-3008 Bearing (Quantity 2) (4 and 4A)	240-2914 Bushing	357-5712 Bushing	514-7655 Bearing (Quantity 2)	489-3010 Bearing (Quantity 2)	489-3018 Bearing (Quantity 2) 489-3019 Bushing	489-3020 Bearing (Quantity 2)	240-2913 Bushing (Quantity 2)
		B1 Family	Super Long Reach	Super Long Reach	489-3008 Bearing (Quantity 2)	489-3021 Bearing (Quantity 2)	290-9180 Bushing	489-3008 Bearing (Quantity 2)	290-9180 Bushing	229-1095 Bushing	229-1095 Bushing (Quantity 2)	229-1091 Bushing (Quantity 2)	248-7835 Bushing (Quantity 2) 248-7857 Bushing	229-1092 Bushing (Quantity 2)	240-2913 Bushing (Quantity 2)	
320	MYK	With Lifting Eye	Super Long Reach, Grade Control	Super Long Reach, Grade Control	489-3008 Bearing (Quantity 2)	240-2913 Bushing (Quantity 2)	290-9180 Bushing	489-3008 Bearing (Quantity 2)	290-9180 Bushing	229-1095 Bushing	526-7667 Bearing (Quantity 2)	526-7666 Bearing (Quantity 2)	517-6017 Bearing (Quantity 2) 248-7857 Bushing	517-6019 Bearing (Quantity 2)	489-3021 Bearing (Quantity 2)	
		B1 Family, With Lifting Eye	Reach, Grade Control	B1 Family, Reach	489-3008 Bearing (Quantity 2)	240-2913 Bushing (Quantity 2)	489-3024 Bearing (Quantity 2)	489-3008 Bearing (Quantity 2)	489-3024 Bearing (Quantity 2)	357-5712 Bushing	514-7655 Bearing (Quantity 2)	489-3010 Bearing (Quantity 2)	489-3018 Bearing (Quantity 2) 489-3019 Bearing	489-3020 Bearing (Quantity 2)	489-3021 Bearing (Quantity 2)	
		B1 Family, With Lifting Eye	Reach, Heavy Duty, Grade Control	B1 Family, Reach	489-3008 Bearing (Quantity 2)	240-2913 Bushing (Quantity 2)	489-3024 Bearing (Quantity 2)	489-3008 Bearing (Quantity 2)	489-3024 Bearing (Quantity 2)	357-5712 Bushing	514-7655 Bearing (Quantity 2)	489-3010 Bearing (Quantity 2)	489-3018 Bearing (Quantity 2) 489-3019 Bearing	489-3020 Bearing (Quantity 2)	489-3021 Bearing (Quantity 2)	
		B1 Family, With Lifting Eye	VAB	B1 Family, Reach	489-3008 Bearing (Quantity 2)	240-2913 Bushing (Quantity 2) (PT2)	517-5957 Bearing (3)	489-3008 Bearing (Quantity 2) (4)	240-2914 Bushing	357-5712 Bushing	514-7655 Bearing (Quantity 2)	489-3010 Bearing (Quantity 2)	489-3018 Bearing (Quantity 2) 489-3019 Bearing	489-3020 Bearing (Quantity 2)	489-3021 Bearing (Quantity 2)	
		B1 Family, With Lifting Eye	VAB	B1 Family, Reach	489-3008 Bearing (Quantity 2)	240-2913 Bushing (Quantity 2) (PT2)	517-5957 Bearing (3)	489-3008 Bearing (Quantity 2) (4)	489-3024 Bearing (Quantity 2)	357-5712 Bushing	514-7655 Bearing (Quantity 2)	489-3010 Bearing (Quantity 2)	489-3018 Bearing (Quantity 2) 489-3019 Bearing	489-3020 Bearing (Quantity 2)	489-3021 Bearing (Quantity 2)	
320 GC	KTN	B1 Family	Reach, Grade Control	B1 Family, Reach	489-3008 Bearing (Quantity 2)	240-2913 Bushing (Quantity 2)	357-5711 Bushing (Quantity 2)	489-3008 Bearing (Quantity 2)	240-2914 Bushing	357-5712 Bushing	514-7655 Bearing (Quantity 2)	489-3010 Bearing (Quantity 2)	489-3018 Bearing (Quantity 2) 489-3019 Bearing	489-3020 Bearing (Quantity 2)	489-3021 Bearing (Quantity 2)	
		B1 Family	Reach, Grade Control	B1 Family, Reach	489-3008 Bearing (Quantity 2)	240-2913 Bushing (Quantity 2)	357-5711 Bushing (Quantity 2)	489-3008 Bearing (Quantity 2)	240-2914 Bushing	357-5712 Bushing	514-7655 Bearing (Quantity 2)	489-3010 Bearing (Quantity 2)	489-3018 Bearing (Quantity 2) 489-3019 Bearing	489-3020 Bearing (Quantity 2)	489-3021 Bearing (Quantity 2)	
320 GC	LKS	B1 Family	Reach, Grade Control	B1 Family, Reach	489-3008 Bearing (Quantity 2)	240-2913 Bushing (Quantity 2)	357-5711 Bushing (Quantity 2)	489-3008 Bearing (Quantity 2)	240-2914 Bushing	357-5712 Bushing	514-7655 Bearing (Quantity 2)	489-3010 Bearing (Quantity 2)	489-3018 Bearing (Quantity 2) 489-3019 Bearing	489-3020 Bearing (Quantity 2)	489-3021 Bearing (Quantity 2)	
		B1 Family	Reach, Grade Control	B1 Family, Reach	489-3008 Bearing (Quantity 2)	240-2913 Bushing (Quantity 2)	357-5711 Bushing (Quantity 2)	489-3008 Bearing (Quantity 2)	240-2914 Bushing	357-5712 Bushing	514-7655 Bearing (Quantity 2)	489-3010 Bearing (Quantity 2)	489-3018 Bearing (Quantity 2) 489-3019 Bearing	489-3020 Bearing (Quantity 2)	489-3021 Bearing (Quantity 2)	



# RETENTION HARDWARE

Sales Model	Serial Number Prefix	Configuration			PT1	PT2	PT3	PT4	PT5	PT6	PT7	PT8	PT9	PT10	PT12
		Linkage Type	Boom Type	Stick Type	Boom Foot	Boom Cylinder Rod End	Stick Cylinder Head End	Boom Nose or Stick Pivot	Stick Cylinder Rod End	Bucket Cylinder Head End	Idler Link Stick End	Stick Nose	Bucket Cylinder Rod End	Power Link Bucket End	Boom Cylinder Head End
320	HEX	B1 Family	Super Long Reach	Super Long Reach	212-2838 Shim (Quantity 2) 308-8775 Shim 308-8776 Shim (Quantity 2) 308-8777 Shim 324-0938 Plate 453-1259 Bolt (Quantity 2) 451-2175 Washer (Quantity 2)	41-3308 Plate (Quantity 2) 166-1486 Shim (Quantity 2) 41-3309 Spacer (Quantity 2) 451-2182 Washer (Quantity 6) 453-3446 Bolt (Quantity 6)	093-0349 Washer 451-2176 Washer 093-0363 Spacer 453-2844 Bolt	093-0084 Shim (Quantity 2) 113-2127 Shim 166-1487 Shim (Quantity 2) 324-0938 Plate 451-2175 Washer (Quantity 2) 453-1259 Bolt (Quantity 2)	166-1486 Shim (Quantity 2) 093-0363 Spacer 093-0349 Washer 451-2176 Washer 453-2844 Bolt	093-0357 Spacer 086-0297 Washer 451-2182 Washer 8T-4179 Bolt	451-2183 Nut (Quantity 2) 576-2782 Bolt 492-8535 Spacer	451-2183 Nut (Quantity 2) 576-3066 Bolt	166-1486 Shim (Quantity 2) 492-8536 Spacer 451-2183 Nut (Quantity 2) 576-2782 Bolt	451-2183 Nut (Quantity 2) 576-3066 Bolt	093-0083 Shim (Quantity 4) 093-0115 Shim (Quantity 2) 093-0349 Washer (Quantity 2) 093-0363 Spacer (Quantity 2) 133-2425 Shim (Quantity 2) 451-2176 Washer (Quantity 2) 453-2844 Bolt (Quantity 2)
		Without Lifting Eye	Reach, Heavy Duty, Grade Control	Reach, B1 Family, Heavy Duty, Grade Control	212-2838 Shim (Quantity 2) 308-8775 Shim 308-8776 Shim (Quantity 2) 308-8777 Shim 324-0938 Plate 453-1259 Bolt (Quantity 2) 451-2175 Washer (Quantity 2)	41-3308 Plate (Quantity 2) 166-1486 Shim (Quantity 2) 41-3309 Spacer (Quantity 2) 8T-4223 Washer (Quantity 6) 8T-4956 Bolt (Quantity 6)	093-0349 Washer 451-2176 Washer 093-0363 Spacer 453-2844 Bolt	093-0084 Shim (Quantity 2) 113-2127 Shim 093-0116 Shim (Quantity 3) 166-1487 Shim (Quantity 2) 324-0938 Plate 451-2175 Washer (Quantity 2) 453-1259 Bolt (Quantity 2)	166-1486 Shim (Quantity 2) 093-0363 Spacer 093-0349 Washer 451-2176 Washer 453-2844 Bolt	093-0349 Washer 118-5982 Spacer 451-2176 Washer 453-2844 Bolt	594-8810 Nut (Quantity 2) 099-0707 Bolt	594-8810 Nut (Quantity 2) 099-0724 Bolt	166-1482 Shim (Quantity 2) 451-2183 Nut (Quantity 2) 453-2841 Bolt	594-8810 Nut (Quantity 2) 099-0724 Bolt	093-0083 Shim (Quantity 4) 093-0115 Shim (Quantity 2) 093-0349 Washer (Quantity 2) 093-0363 Spacer (Quantity 2) 133-2425 Shim (Quantity 2) 451-2176 Washer (Quantity 2) 453-2844 Bolt (Quantity 2)
		With Lifting Eye	Variable Adjustable Boom (VAB)	Reach	212-2838 Shim (Quantity 2) 308-8775 Shim 308-8776 Shim (Quantity 2) 308-8777 Shim 324-0938 Plate 453-1259 Bolt (Quantity 2) 451-2175 Washer (Quantity 2)	Stub (PT2) 41-3308 Plate (Quantity 2) 591-3498 Spacer (Quantity 2) 166-1486 Shim (Quantity 2) 451-2182 Washer (Quantity 6) 453-3446 Bolt (Quantity 6) 471-5225 Shim (Quantity 4) 471-5226 Shim (Quantity 2)  Fore (PT2A) 093-0366 Spacer 093-0084 Shim 093-0349 Washer 113-2127 Shim (Quantity 2) 166-1487 Shim (Quantity 2) 451-2176 Washer 453-2844 Bolt 093-0116 Shim	Stub (3) 093-0084 Shim 093-0116 Shim 093-0349 Washer 093-0366 Spacer 113-2127 Shim (Quantity 2) 451-2176 Washer 453-2844 Bolt  Fore (3A) 093-0083 Shim 093-0363 Spacer 093-0115 Shim 093-0349 Washer 133-2425 Shim (Quantity 2) 451-2176 Washer 453-2844 Bolt	Stub (4) 166-1487 Shim (Quantity 2) 093-0084 Shim 093-0116 Shim 093-0349 Washer 093-0366 Spacer 113-2127 Shim (Quantity 2) 451-2176 Washer 453-2844 Bolt  Fore (4A) 093-0084 Shim 093-0116 Shim (Quantity 3) 113-2127 Shim (Quantity 2) 166-1487 Shim (Quantity 2) 324-0938 Plate 451-2175 Washer (Quantity 2) 453-1259 Bolt (Quantity 2)	166-1486 Shim (Quantity 2) 093-0363 Spacer 093-0349 Washer 451-2176 Washer 453-2844 Bolt	093-0349 Washer 118-5982 Spacer 451-2176 Washer 453-2844 Bolt	594-8810 Nut (Quantity 2) 0099-0707 Bolt 526-9454 Spacer	594-8810 Nut (Quantity 2) 099-0724 Bolt	166-1482 Shim (Quantity 2) 451-2183 Nut (Quantity 2) 453-2841 Bolt 526-9455 Spacer	594-8810 Nut (Quantity 2) 099-0724 Bolt	093-0083 Shim (Quantity 4) 093-0115 Shim (Quantity 2) 093-0349 Washer (Quantity 2) 093-0363 Spacer (Quantity 2) 133-2425 Shim (Quantity 2) 451-2176 Washer (Quantity 2) 453-2844 Bolt (Quantity 2)
		B1 Family	VAB	Reach	212-2838 Shim (Quantity 2) 308-8775 Shim 308-8776 Shim (Quantity 2) 308-8777 Shim 324-0938 Plate 453-1259 Bolt (Quantity 2) 451-2175 Washer (Quantity 2)	Stub (PT2) 41-3308 Plate (Quantity 2) 591-3498 Spacer (Quantity 2) 166-1486 Shim (Quantity 2) 451-2182 Washer (Quantity 6) 453-3446 Bolt (Quantity 6) 471-5225 Shim (Quantity 4) 471-5226 Shim (Quantity 2)  Fore (PT2A) 093-0366 Spacer 093-0084 Shim 093-0349 Washer 113-2127 Shim (Quantity 2) 166-1487 Shim (Quantity 2) 451-2176 Washer 453-2844 Bolt 093-0116 Shim	Stub (3) 093-0084 Shim 093-0116 Shim 093-0349 Washer 093-0366 Spacer 113-2127 Shim (Quantity 2) 451-2176 Washer 453-2844 Bolt  Fore (3A) 093-0083 Shim 093-0363 Spacer 093-0115 Shim 093-0349 Washer 133-2425 Shim (Quantity 2) 451-2176 Washer 453-2844 Bolt	Stub (4) 166-1487 Shim (Quantity 2) 093-0084 Shim 093-0116 Shim 093-0349 Washer 093-0366 Spacer 113-2127 Shim (Quantity 2) 451-2176 Washer 453-2844 Bolt  Fore (4A) 093-0084 Shim (Quantity 2) 113-2127 Shim 166-1487 Shim (Quantity 2) 324-0938 Plate 451-2175 Washer (Quantity 2) 453-1259 Bolt (Quantity 2)	166-1486 Shim (Quantity 2) 093-0363 Spacer 093-0349 Washer 451-2176 Washer 453-2844 Bolt	093-0349 Washer 118-5982 Spacer 451-2176 Washer 453-2844 Bolt	451-2183 Nut (Quantity 2) 576-2782 Bolt	451-2183 Nut (Quantity 2) 576-3066 Bolt	166-1486 Shim (Quantity 2) 451-2183 Nut (Quantity 2) 576-2782 Bolt	451-2183 Nut (Quantity 2) 576-3066 Bolt	093-0083 Shim (Quantity 4) 093-0115 Shim (Quantity 2) 093-0349 Washer (Quantity 2) 093-0363 Spacer (Quantity 2) 133-2425 Shim (Quantity 2) 451-2176 Washer (Quantity 2) 453-2844 Bolt (Quantity 2)
		B1 Family	Super Long Reach	Super Long Reach	212-2838 Shim (Quantity 2) 308-8775 Shim 308-8776 Shim (Quantity 2) 308-8777 Shim 324-0938 Plate 453-1259 Bolt (Quantity 2) 451-2175 Washer (Quantity 2)	41-3308 Plate (Quantity 2) 166-1486 Shim (Quantity 2) 41-3309 Spacer (Quantity 2) 451-2182 Washer (Quantity 6) 453-3446 Bolt (Quantity 6)	093-0349 Washer 451-2176 Washer 093-0363 Spacer 453-2844 Bolt	093-0084 Shim (Quantity 2) 113-2127 Shim 166-1487 Shim (Quantity 2) 324-0938 Plate 451-2175 Washer (Quantity 2) 453-1259 Bolt (Quantity 2)	166-1486 Shim (Quantity 2) 093-0363 Spacer 093-0349 Washer 451-2176 Washer 453-2844 Bolt	093-0357 Spacer 086-0297 Washer 451-2182 Washer 8T-4179 Bolt	096-4876 Nut (Quantity 2) 099-0707 Bolt	134-7178 Pin 134-7179 Ring	186-5644 Bolt 451-2183 Nut (Quantity 2)	134-7178 Pin 134-7179 Ring	093-0083 Shim (Quantity 4) 093-0115 Shim (Quantity 2) 093-0349 Washer (Quantity 2) 093-0363 Spacer (Quantity 2) 133-2425 Shim (Quantity 2) 451-2176 Washer (Quantity 2) 453-2844 Bolt (Quantity 2)

# RETENTION HARDWARE (CONTINUED)

Sales Model	Serial Number Prefix	Configuration			PT1	PT2	PT3	PT4	PT5	PT6	PT7	PT8	PT9	PT10	PT12
		Linkage Type	Boom Type	Stick Type	Boom Foot	Boom Cylinder Rod End	Stick Cylinder Head End	Boom Nose or Stick Pivot	Stick Cylinder Rod End	Bucket Cylinder Head End	Idler Link Stick End	Stick Nose	Bucket Cylinder Rod End	Power Link Bucket End	Boom Cylinder Head End
320	MYK	With Lifting Eye	Super Long Reach, Grade Control	Super Long Reach, Grade Control	212-2838 Shim (Quantity 2) 308-8775 Shim 308-8776 Shim (Quantity 2) 308-8777 Shim 324-0938 Plate 453-1259 Bolt (Quantity 2) 451-2175 Washer (Quantity 2)	41-3308 Plate (Quantity 2) 166-1486 Shim (Quantity 2) 591-3498 Spacer (Quantity 2) 451-2182 Washer (Quantity 6) 453-3446 Bolt (Quantity 6)	093-0349 Washer 451-2176 Washer 093-0363 Spacer 453-2844 Bolt	093-0084 Shim (Quantity 2) 113-2127 Shim 166-1487 Shim (Quantity 2) 324-0938 Plate 451-2175 Washer (Quantity 2) 453-1259 Bolt (Quantity 2)	166-1486 Shim (Quantity 2) 093-0349 Washer 093-0363 Spacer 451-2176 Washer 453-2844 Bolt	093-0357 Spacer 086-0297 Washer 451-2182 Washer 8T-4179 Bolt	594-8810 Nut (Quantity 2) 099-0707 Bolt	594-8810 Nut (Quantity 2) 099-0724 Bolt	166-1482 Shim (Quantity 2) 451-2183 Nut (Quantity 2) 453-2841 Bolt	594-8810 Nut (Quantity 2) 099-0724 Bolt	093-0083 Shim (Quantity 4) 093-0115 Shim (Quantity 2) 093-0349 Washer (Quantity 2) 093-0363 Spacer (Quantity 2) 133-2425 Shim (Quantity 2) 451-2176 Washer (Quantity 2) 453-2844 Bolt (Quantity 2)
		B1 Family, WITH LIFTING EYE	Reach, Grade Control	B1 Family, Reach	212-2838 Shim (Quantity 2) 308-8775 Shim 308-8776 Shim (Quantity 2) 308-8777 Shim 324-0938 Plate 453-1259 Bolt (Quantity 2) 451-2175 Washer (Quantity 2)	41-3308 Plate (Quantity 2) 166-1486 Shim (Quantity 2) 41-3309 Spacer (Quantity 2) 8T-4223 Washer (Quantity 6) 362-1320 Bolt (Quantity 6)	093-0349 Washer 451-2176 Washer 093-0363 Spacer 453-2844 Bolt	093-0084 Shim (Quantity 2) 113-2127 Shim 166-1487 Shim (Quantity 2) 324-0938 Plate 451-2175 Washer (Quantity 2) 453-1259 Bolt (Quantity 2)	166-1486 Shim (Quantity 2) 093-0349 Washer 093-0363 Spacer 451-2176 Washer 453-2844 Bolt	451-2183 Nut (Quantity 2) 576-2782 Bolt 492-8535 Spacer	451-2183 Nut (Quantity 2) 576-3066 Bolt	166-1486 Shim (Quantity 2) 451-2183 Nut (Quantity 2) 576-2782 Bolt 492-8536 Spacer	451-2183 Nut (Quantity 2) 576-3066 Bolt	093-0083 Shim (Quantity 4) 093-0115 Shim (Quantity 2) 093-0349 Washer (Quantity 2) 093-0363 Spacer (Quantity 2) 133-2425 Shim (Quantity 2) 451-2176 Washer (Quantity 2) 453-2844 Bolt (Quantity 2)	
		B1 Family, With Lifting Eye	Reach, Heavy Duty, Grade Control	B1 Family, Reach	212-2838 Shim (Quantity 2) 308-8775 Shim 308-8776 Shim (Quantity 2) 308-8777 Shim 324-0938 Plate 453-1259 Bolt (Quantity 2) 451-2175 Washer (Quantity 2)	41-3308 Plate (Quantity 2) 166-1486 Shim (Quantity 2) 41-3309 Spacer (Quantity 2) 8T-4223 Washer (Quantity 6) 362-1320 Bolt (Quantity 6)	093-0349 Washer 451-2176 Washer 093-0363 Spacer 453-2844 Bolt	093-0084 Shim (Quantity 2) 113-2127 Shim 093-0116 Shim (Quantity 3) 166-1487 Shim (Quantity 2) 324-0938 Plate 451-2175 Washer (Quantity 2) 453-1259 Bolt (Quantity 2)	166-1486 Shim (Quantity 2) 093-0349 Washer 093-0363 Spacer 451-2176 Washer 453-2844 Bolt	093-0349 Washer 118-5982 Spacer 451-2176 Washer 453-2844 Bolt	451-2183 Nut (Quantity 2) 576-2782 Bolt 492-8535 Spacer	451-2183 Nut (Quantity 2) 576-3066 Bolt	166-1486 Shim (Quantity 2) 451-2183 Nut (Quantity 2) 576-2782 Bolt 492-8536 Spacer	451-2183 Nut (Quantity 2) 576-3066 Bolt	093-0083 Shim (Quantity 4) 093-0115 Shim (Quantity 2) 093-0349 Washer (Quantity 2) 093-0363 Spacer (Quantity 2) 133-2425 Shim (Quantity 2) 451-2176 Washer (Quantity 2) 453-2844 Bolt (Quantity 2)
		B1 Family, With Lifting Eye	VAB	B1 Family, Reach	212-2838 Shim (Quantity 2) 308-8775 Shim 308-8776 Shim (Quantity 2) 308-8777 Shim 324-0938 Plate 453-1259 Bolt (Quantity 2) 451-2175 Washer (Quantity 2)	Stub (PT2) 41-3308 Plate (Quantity 2) 591-3498 Spacer (Quantity 2) 166-1486 Shim (Quantity 2) 451-2182 Washer (Quantity 6) 453-3446 Bolt (Quantity 6) 471-5225 Shim (Quantity 4) 471-5226 Shim (Quantity 2) Fore (PT2A) 7Y-2497 Shim (Quantity 2) 093-0366 Spacer 093-0084 Shim (Quantity 2) 093-0349 Washer 113-2127 Shim (Quantity 4) 166-1487 Shim (Quantity 2) 451-2176 Washer 453-2844 Bolt 093-0116 Shim (Quantity 2)	Stub (3) 7Y-2497 Shim 093-0084 Shim 093-0116 Shim 113-2127 Shim (Quantity 2) 093-0349 Washer 093-0366 Spacer 451-2176 Washer 453-2844 Bolt Fore (3A) 7Y-2498 Shim 093-0083 Shim 093-0363 Spacer 093-0115 Shim 093-0349 Washer 133-2425 Shim (Quantity 2) 451-2176 Washer 453-2844 Bolt	Stub (4) 166-1487 Shim (Quantity 2) 093-0084 Shim 093-0116 Shim 113-2127 Shim (Quantity 2) 093-0349 Washer 093-0366 Spacer 451-2176 Washer 453-2844 Bolt Fore (4A) 093-0084 Shim (Quantity 2) 113-2127 Shim 166-1487 Shim (Quantity 2) 324-0938 Plate 451-2175 Washer (Quantity 2) 453-1259 Bolt (Quantity 2)	166-1486 Shim (Quantity 2) 093-0349 Washer 093-0363 Spacer 451-2176 Washer 453-2844 Bolt	093-0349 Washer 118-5982 Spacer 451-2176 Washer 453-2844 Bolt	451-2183 Nut (Quantity 2) 576-2782 Bolt 492-8535 Spacer	451-2183 Nut (Quantity 2) 576-3066 Bolt	166-1486 Shim (Quantity 2) 451-2183 Nut (Quantity 2) 576-2782 Bolt 492-8536 Spacer	451-2183 Nut (Quantity 2) 576-3066 Bolt	093-0083 Shim (Quantity 4) 093-0115 Shim (Quantity 2) 093-0349 Washer (Quantity 2) 093-0363 Spacer (Quantity 2) 133-2425 Shim (Quantity 2) 451-2176 Washer (Quantity 2) 453-2844 Bolt (Quantity 2)
		B1 Family, With Lifting Eye	VAB	B1 Family, Reach	212-2838 Shim (Quantity 2) 308-8775 Shim 308-8776 Shim (Quantity 2) 308-8777 Shim 324-0938 Plate 453-1259 Bolt (Quantity 2) 451-2175 Washer (Quantity 2)	Stub (PT2) 41-3308 Plate (Quantity 2) 591-3498 Spacer (Quantity 2) 166-1486 Shim (Quantity 2) 451-2182 Washer (Quantity 6) 453-3446 Bolt (Quantity 6) 471-5225 Shim (Quantity 4) 471-5226 Shim (Quantity 2) Fore (PT2A)) 093-0366 Spacer 093-0084 Shim 093-0349 Washer 113-2127 Shim (Quantity 2) 166-1487 Shim (Quantity 2) 451-2176 Washer 453-2844 Bolt 093-0116 Shim	Stub (3) 7Y-2497 Shim 093-0084 Shim 093-0116 Shim 113-2127 Shim (Quantity 2) 093-0349 Washer 093-0366 Spacer 451-2176 Washer 453-2844 Bolt Fore (3A) 093-0083 Shim 093-0363 Spacer 093-0115 Shim 093-0349 Washer 133-2425 Shim (Quantity 2) 451-2176 Washer 453-2844 Bolt	Stub (4) 166-1487 Shim (Quantity 2) 093-0084 Shim 093-0116 Shim 113-2127 Shim (Quantity 2) 093-0349 Washer 093-0366 Spacer 451-2176 Washer 453-2844 Bolt Fore (4A) 093-0084 Shim 093-0116 Shim (Quantity 2) 113-2127 Shim (Quantity 2) 166-1487 Shim (Quantity 2) 324-0938 Plate 451-2175 Washer (Quantity 2) 453-1259 Bolt (Quantity 2)	166-1486 Shim (Quantity 2) 093-0349 Washer 093-0363 Spacer 451-2176 Washer 453-2844 Bolt	093-0349 Washer 118-5982 Spacer 451-2176 Washer 453-2844 Bolt	451-2183 Nut (Quantity 2) 576-2782 Bolt 492-8535 Spacer	451-2183 Nut (Quantity 2) 576-3066 Bolt	166-1486 Shim (Quantity 2) 451-2183 Nut (Quantity 2) 576-2782 Bolt 492-8536 Spacer	451-2183 Nut (Quantity 2) 576-3066 Bolt	093-0083 Shim (Quantity 4) 093-0115 Shim (Quantity 2) 093-0349 Washer (Quantity 2) 093-0363 Spacer (Quantity 2) 133-2425 Shim (Quantity 2) 451-2176 Washer (Quantity 2) 453-2844 Bolt (Quantity 2)

# RETENTION HARDWARE (CONTINUED)

Sales Model	Serial Number Prefix	Configuration			PT1	PT2	PT3	PT4	PT5	PT6	PT7	PT8	PT9	PT10	PT12
		Linkage Type	Boom Type	Stick Type	Boom Foot	Boom Cylinder Rod End	Stick Cylinder Head End	Boom Nose or Stick Pivot	Stick Cylinder Rod End	Bucket Cylinder Head End	Idler Link Stick End	Stick Nose	Bucket Cylinder Rod End	Power Link Bucket End	Boom Cylinder Head End
320 GC	KTN	B1 Family	Reach, Grade Control	Reach,B1 Family	212-2838 Shim (Quantity 2) 308-8775 Shim 308-8776 Shim (Quantity 2) 308-8777 Shim 324-0938 Plate 453-1259 Bolt (Quantity 2) 451-2175 Washer (Quantity 2)	166-1486 Shim (Quantity 2) 591-3498 Spacer (Quantity 2) 4I-3308 Plate (Quantity 2) 8T-4223 Washer (Quantity 6) 362-1320 Bolt (Quantity 6)	093-0363 Spacer 093-0349 Washer 451-2176 Washer 453-2844 Bolt	093-0084 Shim (Quantity 2) 113-2127 Shim 166-1487 Shim (Quantity 2) 324-0938 Plate 451-2175 Washer (Quantity 2) 453-1259 Bolt (Quantity 2)	166-1486 Shim (Quantity 2) 093-0349 Washer 093-0363 Spacer 451-2176 Washer 453-2844 Bolt	093-0349 Washer 118-5982 Spacer 451-2176 Washer 453-2844 Bolt	451-2183 Nut (Quantity 2) 576-2782 Bolt	451-2183 Nut (Quantity 2) 576-3066 Bolt	166-1486 Shim (Quantity 2) 451-2183 Nut (Quantity 2) 576-2782 Bolt	451-2183 Nut (Quantity 2) 576-3066 Bolt	093-0083 Shim (Quantity 4) 093-0115 Shim (Quantity 2) 093-0349 Washer (Quantity 2) 093-0363 Spacer (Quantity 2) 133-2425 Shim (Quantity 2) 451-2176 Washer (Quantity 2) 453-2844 Bolt (Quantity 2)
		B1 Family	Reach, Grade Control	Reach,B1 Family	212-2838 Shim (Quantity 2) 308-8775 Shim 308-8776 Shim (Quantity 2) 308-8777 Shim 324-0938 Plate 453-1259 Bolt (Quantity 2) 451-2175 Washer (Quantity 2)	4I-3308 Plate (Quantity 2) 166-1486 Shim (Quantity 2) 4I-3309 Spacer (Quantity 2) 8T-4223 Washer (Quantity 6) 362-1320 Bolt (Quantity 6)	093-0349 Washer 451-2176 Washer 093-0363 Spacer 453-2844 Bolt	093-0084 Shim (Quantity 2) 113-2127 Shim 093-0116 Shim (Quantity 3) 166-1487 Shim (Quantity 2) 324-0938 Plate 451-2175 Washer (Quantity 2) 453-1259 Bolt (Quantity 2)	166-1486 Shim (Quantity 2) 093-0349 Washer 093-0363 Spacer 451-2176 Washer 453-2844 Bolt	093-0349 Washer 118-5982 Spacer 451-2176 Washer 453-2844 Bolt	451-2183 Nut (Quantity 2) 576-2782 Bolt	451-2183 Nut (Quantity 2) 576-3066 Bolt	166-1486 Shim (Quantity 2) 451-2183 Nut (Quantity 2) 576-2782 Bolt	451-2183 Nut (Quantity 2) 576-3066 Bolt	093-0083 Shim (Quantity 4) 093-0115 Shim (Quantity 2) 093-0349 Washer (Quantity 2) 093-0363 Spacer (Quantity 2) 133-2425 Shim (Quantity 2) 451-2176 Washer (Quantity 2) 453-2844 Bolt (Quantity 2)
320 GC	LKS	B1 Family	Reach, Grade Control	Reach,B1 Family	212-2838 Shim (Quantity 2) 308-8775 Shim 308-8776 Shim (Quantity 2) 308-8777 Shim 324-0938 Plate 453-1259 Bolt (Quantity 2) 451-2175 Washer (Quantity 2)	166-1486 Shim (Quantity 2) 591-3498 Spacer (Quantity 2) 4I-3308 Plate (Quantity 2) 8T-4223 Washer (Quantity 6) 362-1320 Bolt (Quantity 6)	093-0363 Spacer 093-0349 Washer 451-2176 Washer 453-2844 Bolt	093-0084 Shim (Quantity 2) 113-2127 Shim 166-1487 Shim (Quantity 2) 324-0938 Plate 451-2175 Washer (Quantity 2) 453-1259 Bolt (Quantity 2)	166-1486 Shim (Quantity 2) 093-0349 Washer 093-0363 Spacer 451-2176 Washer 453-2844 Bolt	093-0349 Washer 118-5982 Spacer 451-2176 Washer 453-2844 Bolt	451-2183 Nut (Quantity 2) 576-2782 Bolt	451-2183 Nut (Quantity 2) 576-3066 Bolt	166-1486 Shim (Quantity 2) 451-2183 Nut (Quantity 2) 576-2782 Bolt	451-2183 Nut (Quantity 2) 576-3066 Bolt	093-0083 Shim (Quantity 4) 093-0115 Shim (Quantity 2) 093-0349 Washer (Quantity 2) 093-0363 Spacer (Quantity 2) 133-2425 Shim (Quantity 2) 451-2176 Washer (Quantity 2) 453-2844 Bolt (Quantity 2)
		B1 Family	Reach, Grade Control	Reach,B1 Family	212-2838 Shim (Quantity 2) 308-8775 Shim 308-8776 Shim (Quantity 2) 308-8777 Shim 324-0938 Plate 453-1259 Bolt (Quantity 2) 451-2175 Washer (Quantity 2)	4I-3308 Plate (Quantity 2) 166-1486 Shim (Quantity 2) 4I-3309 Spacer (Quantity 2) 8T-4223 Washer (Quantity 6) 362-1320 Bolt (Quantity 6)	093-0349 Washer 451-2176 Washer 093-0363 Spacer 453-2844 Bolt	093-0084 Shim (Quantity 2) 113-2127 Shim 093-0116 Shim (Quantity 3) 166-1487 Shim (Quantity 2) 324-0938 Plate 451-2175 Washer (Quantity 2) 453-1259 Bolt (Quantity 2)	166-1486 Shim (Quantity 2) 093-0349 Washer 093-0363 Spacer 451-2176 Washer 453-2844 Bolt	093-0349 Washer 118-5982 Spacer 451-2176 Washer 453-2844 Bolt	451-2183 Nut (Quantity 2) 576-2782 Bolt	451-2183 Nut (Quantity 2) 576-3066 Bolt	166-1486 Shim (Quantity 2) 451-2183 Nut (Quantity 2) 576-2782 Bolt	451-2183 Nut (Quantity 2) 576-3066 Bolt	093-0083 Shim (Quantity 4) 093-0115 Shim (Quantity 2) 093-0349 Washer (Quantity 2) 093-0363 Spacer (Quantity 2) 133-2425 Shim (Quantity 2) 451-2176 Washer (Quantity 2) 453-2844 Bolt (Quantity 2)



# Cat Filters Provide Longer Injector Life

Chances are, you don't skip oil changes or regular maintenance on the family car. So why skip planned maintenance on your Cat equipment? Cat fuel filters outperform the competition, with up to 45% longer injector life and up to 80% decreased cost per hour.\*



# Productivity and Hydraulics Go Hand In Hand

If your hydraulic system isn't performing at peak efficiency, it's robbing your machine of performance. Efficiency losses usually occur slowly! These losses can also increase your fuel consumption and operating costs.



# Need help?

Your local Cat dealer can provide:

- Technical Support
- Customer Value Agreements
- Oil sample analysis
- Parts needed and equipment fit
- Repair financing
- Rental Services

Find your local dealer at [www.cat.com](http://www.cat.com) today.



# LET'S DO THE WORK.™



To buy Cat parts online, visit [Parts.cat.com](http://Parts.cat.com).

\* Visit <https://www.cat.com/filtersandfluids> for more details

PEDJ0917  
(Global, except China)

© 2022 Caterpillar. All Rights Reserved. CAT, CATERPILLAR, LET'S DO THE WORK, their respective logos, "Caterpillar Corporate Corporate Yellow", the "Power Edge" and Cat "Modern Hex" trade dress as well as corporate and product identity used herein, are trademarks of Caterpillar and may not be used without permission.

