

# 966 GC

WHEEL LOADER



---

<b>Engine Maximum Power</b>	219 kW (294 hp)
<b>Operating Weight</b>	21 781 kg (48,018 lb)

Cat® engine meets U.S. EPA Tier 4 Final, EU Stage V, Korea Stage V, China Nonroad Stage IV and Japan 2014 emission standards.



The new Cat® 966 GC Wheel Loader is easy to own and operate. It offers low fuel consumption with an on-demand fan, load-sensing hydraulics, intuitive controls, and Performance Series Buckets. This machine is built to be just the right machine for a broad range of applications. Great machine performance combined with the low owning and operating costs makes the 966 GC the right choice for your business.

# CAT® 966 GC

SIMPLY RIGHT FOR THE JOB



## WHEEL LOADERS MADE FOR MORE

The 966 GC is a simple, reliable machine that is durable, fuel competitive, and economical.

- + PROVEN RELIABLE COMPONENTS FOR GREAT PERFORMANCE
- + INTUITIVE CONTROLS AND SIMPLE USER INTERFACE FOR EASY OPERATION
- + THE RIGHT MACHINE FOR A BROAD RANGE OF APPLICATIONS AT REDUCED OWNING COSTS
- + EMISSIONS COMPLIANCE WITHOUT WORK INTERRUPTION

---

## POWERFUL EFFICIENCY

Low fuel consumption and exceptional production capabilities help you get the job done right for less.

---

## PRODUCTIVE RESULTS

Purpose built to handle a wide range of applications on all your jobsites.

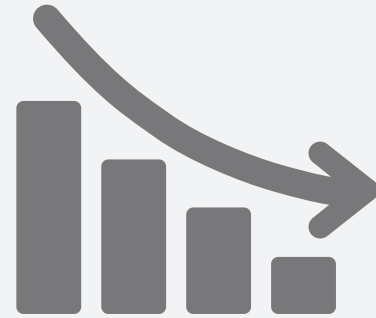
---

## EASY SERVICEABILITY

Ground access to most of the daily and scheduled maintenance points make the machine safe, easy, and efficient to service.

## ECONOMICAL SAVINGS

**THE 966 GC IS THE  
SENSIBLE CHOICE  
FOR YOUR BUSINESS.**



**LOWER OWNING COSTS**





## POWERTRAIN

### POWERFUL EFFICIENCY

Staying ahead of the competition, Caterpillar offers a wide variety of cutting-edge technology and components that are specifically built to save time and reduce fuel costs.

#### ENGINE AND EMISSIONS

---

Powered by a Cat engine and certified to meet emission standards, these machines feature the Engine Idle Management System (EIMS) to minimize idle RPM and fuel consumption. Auto Idle Shutdown will shut down engine after a preset time.

#### TRANSMISSION

---

The Cat planetary powershift transmission is a proven design, made in-house, for high reliability and long service life.

#### CONTROL VALVES

---

The well-known Cat electronic clutch is a pressure-compensated, single-clutch shifting system which allows smooth, efficient gear changes in all operating situations.

#### DURABLE AXLES

---

Heavy-duty axles with inboard final drives feature hydraulically activated wet-disc brakes. Optional axle oil coolers (AOC) are available for high-energy applications. The optional limited slip differential (LSD) is automatically activated and increases traction in poor underfoot conditions.

#### ON-DEMAND FAN

---

Variable speed fan adjusts to meet the cooling requirements of the machine, lowering fuel consumption, noise levels, and radiator plugging. In very dusty conditions, an optional reversing fan reduces cleaning needs.

# PRODUCTIVE RESULTS

WORK SMART AND MOVE MORE

---

## PERFORMANCE SERIES BUCKETS

Easy-to-load Performance Series Buckets also improve material retention and reduce dig times. These buckets significantly improve productivity and fuel efficiency, resulting in unsurpassed production capabilities with increased bucket fill factors by up to 10% compared to legacy designs.

---

## LOAD SENSING HYDRAULICS

Load sensing hydraulic system produces flow and pressure for the implement system only when needed, improving machine productivity and resulting in lower fuel consumption. An optional third hydraulic function is also available to control a variety of work tools.

---

## Z-BAR LINKAGE

The proven Z-bar linkage with cast cross-member and tilt lever combines digging efficiency and high breakout forces for superior production capabilities.



---

## RIDE CONTROL SYSTEM

The optional ride control system improves ride, performance, and load retention when traveling over rough terrain and at higher speeds, lowering cycle times and boosting productivity.

---

## OPTIONAL PRODUCT LINK™

Track asset location, hours, fuel usage, diagnostic codes, and idle time to improve your productivity and lower your operating costs.

### CAT PAYLOAD KIT (Optional)\*

Track productivity from the cab with quick access to information such as truck target weights, loads, and totals.

- + PROVEN ACCURACY
- + FLEXIBLE INSTALLATION
- + EASY CALIBRATION AND SETUP
- + SIMPLE INSTALLATION: COMPARABLE TO THIRD PARTY PAYLOAD SYSTEMS

\*Not legal for trade.

TESTED, PROVEN, AND READY TO WORK.

# EASY SERVICEABILITY



---

## SERVICE ACCESS

The engine hood features large, wide-opening gull-wing doors for comfortable reach to all service points.

---

## GREASE POINTS

Grease fittings for hard-to-reach pins are grouped conveniently for easy and quick preventive lubrication.

---

## CATERPILLAR DESIGNED

Built on a long legacy of high performance and highly reliable wheel loaders, our machine components are designed and manufactured to Caterpillar quality standards.

---

## RENOWNED SUPPORT

Your Cat dealer is always available to help you maximize machine uptime by providing global parts support, trained technicians, and Customer Value Agreements.

---

## CAT AUTOLUBE SYSTEM

The new optional Cat Autolube System has a simple one-button control and includes fault flash function.

# OPERATOR ENVIRONMENT

## COMFORTABLE CAB, INTUITIVE CONTROLS

A spacious cab features easy, intuitive controls and excellent visibility, which provides a comfortable working environment.



### ENTRY AND EXIT

Ladders are standard on both sides of the machine for easy access to the cab from the left-hand side and to service points from the right-hand side. The operator station is equipped with handrails for cab accessibility.



### DISPLAY AND INTERFACE

Simple to operate, the complete user interface has been designed as an intuitive system, allowing the operator to monitor machine health.



### VISIBILITY AND SAFETY

Extended windows with wide, flat, and distortion-free front windshield combined with rearview mirrors with spot mirrors offer excellent visibility. A rearview camera is standard, and a windshield guard option is available.



### EASY CONTROLS

The pilot-operated hydraulic controls deliver comfortable, low-effort operation. Single axis levers or joystick are available, and the adjustable steering column includes a manual shifter. Both options are equipped with remote transmission kick-down switches.



### CLIMATE CONTROLLER

Air conditioning and louvered vents let the operator direct air flow. The fresh air and recirculation cab air filters allow for superior filtration and easy cleaning.



### COMFORTABLE SEAT

The comfort cloth mechanical suspension seat provides a variety of adjustments and flexible arm and headrest. An air suspension seat with high-back and heating option is also available.

# SUPPORT ALL YOUR JOBSITE NEEDS

For specific applications, you need a wheel loader that is purpose built for the job. Cat work tools are engineered to handle all of your specific worksite needs.



## FUSION™ QUICK COUPLER

The Fusion Quick Coupler System allows machines to use a wide range of tools that can each be picked up by machines of varying sizes. Fusion is designed to integrate the work tool and the machine by pulling the coupler and tool closer to the loader, increasing overall lift capability.

- + Improved machine performance
- + Unsurpassed durability
- + Good visibility



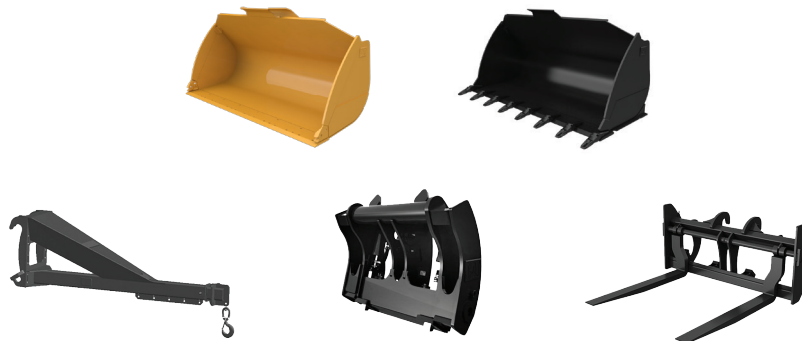
## PERFORMANCE SERIES BUCKETS

Performance Series Buckets use a system-based approach to balance bucket shape with the machine's lift and tilt capacity, weight, and linkage. A variety of bucket styles match the machine to the application and material moved.

- + Fuel efficient
- + Lower operating costs
- + Higher productivity

### Work Tool Attachments for All Support Functions on Your Jobsite

A variety of pin-on and coupler attachments are available for the 966 GC model. Cat work tools are durable, reliable, and designed for performance and efficiency with your Cat wheel loader.





# TECHNICAL SPECIFICATIONS

See [cat.com](http://cat.com) for complete specifications.

ENGINE		
Engine Model	Cat® C9.3B	
Engine Power @ 2,200 rpm – ISO 14396:2002	219 kW	294 hp
ISO 14396:2002 (DIN)	298 hp (metric)	
Gross Power @ 2,200 rpm – SAE J1995:2014	223 kW	299 hp
SAE J1995:2014 (DIN)	303 hp (metric)	
Net Power @ 2,200 rpm – ISO 9249:2007, SAE J1349:2011	196 kW	263 hp
SAE J1349:2011 (DIN)	266 hp (metric)	
Engine Torque @ 1,200 rpm – ISO 14396:2002	1781 N·m	1,314 lbf·ft
Gross Torque @ 1,200 rpm – SAE J1995:2014	1799 N·m	1,327 lbf·ft
Net Torque @ 1,100 rpm – ISO 3294:2007, SAE J1349:2011, EEC 80/1269	1673 N·m	1,234 lbf·ft
Bore	115 mm	4.50 in
Stroke	149 mm	5.90 in
Displacement	9.30 L	568 in <sup>3</sup>

- Cat engine meets U.S. EPA Tier 4 Final, EU Stage V, Korea Stage V, China Nonroad Stage IV and Japan 2014 emission standards.
- The net power advertised is the power available at the flywheel when the engine is equipped with fan, alternator, air cleaner, and aftertreatment.
- Cat diesel engines are required to use ULSD (ultra-low sulfur diesel fuel with 15 ppm of sulfur or less) or ULSD blended with the following lower-carbon intensity fuels up to:
  - 20% biodiesel FAME (fatty acid methyl ester)\*
  - 100% renewable diesel, HVO (hydrotreated vegetable oil) and GTL (gas-to-liquid) fuels

Refer to guidelines for successful application. Please consult your Cat dealer or “Caterpillar Machine Fluids Recommendations” (SEBU6250) for details.

\* Engines with no aftertreatment devices can use higher blends, up to 100% biodiesel (for use of blends higher than 20% biodiesel, consult your Cat dealer).

WEIGHTS		
Operating Weight	21 781 kg	48,018 lb

- Weight based on a machine configuration with Maxam MS302 L3 Tires, full fluids, operator, standard counterweight, ride control cold start, roading fenders, Product Link™, Open/open axles, powertrain guard, secondary steering, steering cylinder guard, and a 4.0 m<sup>3</sup> (5.25 yd<sup>3</sup>) general purpose bucket with BOCE.

SOUND		
Operator Sound Pressure Level (ISO 6396:2008)	73 dB(A)	
Exterior Sound Power Level (ISO 6395:2008)	110 dB(A)	
Operator Sound Pressure Level (ISO 6396:2008)*	72 dB(A)	
Exterior Sound Power Level (ISO 6395:2008)**	108 dB(A)	

\*Including countries that adopt the EU and UK Directives

\*\*EU Noise Directive 2000/14/EC and UK Noise Regulation 2001 No. 1701

BUCKET CAPACITIES		
Bucket Range	3.2-7.1 m <sup>3</sup>	4.25-9.25 yd <sup>3</sup>

OPERATING SPECIFICATIONS		
Static Tipping Load – Full 37° Turn – with Tire Deflection	13 640 kg	30,072 lb
Static Tipping Load – Full 37° Turn – No Tire Deflection	14 621 kg	32,233 lb
Breakout Force	164 kN	36,974 lbf

• For a machine configuration as defined under “Weight.”

- Full compliance to ISO 14397-1:2007 Sections 1 through 6, which requires 2% verification between calculations and testing.

TRANSMISSION					
Forward 1	6.4 km/h	4.0 mph	Reverse 1	7.0 km/h	4.3 mph
Forward 2	12.1 km/h	7.5 mph	Reverse 2	13.2 km/h	8.2 mph
Forward 3	21.0 km/h	13.0 mph	Reverse 3	23.0 km/h	14.3 mph
Forward 4	34.8 km/h	21.6 mph	Reverse 4	36.9 km/h	22.9 mph

• Maximum travel speeds (26.5R25 tires).

- Maximum travel speed in standard vehicle with empty bucket and standard L3 tires with 826 mm (32 in) roll radius.

SERVICE REFILL CAPACITIES		
Fuel Tank	320 L	84.5 gal
DEF Tank	26 L	6.9 gal
Cooling System	53 L	14.0 gal
Crankcase	23 L	6.1 gal
Transmission	55 L	14.5 gal
Differentials and Final Drives – Front	57 L	15.1 gal
Differentials and Final Drives – Rear	57 L	15.1 gal
Hydraulic Tank	101 L	26.7 gal

HYDRAULIC SYSTEM		
Implement Pump Type	Variable Displacement Piston, Load Sensing	
Implement System		
Maximum Flow @ 2,275 rpm	327 L/min	86 gal/min
Maximum Operating Pressure	27 900 kPa	4,047 psi
Maximum Flow 3rd Function	240 L/min	63 gal/min
Maximum Operating Pressure 3rd Function	22 780 kPa	3,304 psi
Hydraulic Cycle Time		
Raise from Carry Position	5.7 seconds	
Dump at Maximum Raise	1.8 seconds	
Lower, Empty, Float Down	2.6 seconds	
Total Cycle Time	10.1 seconds	

AIR CONDITIONING SYSTEM
The air conditioning system on this machine contains the fluorinated greenhouse gas refrigerant R134a (Global Warming Potential = 1430). The system contains 1.7 kg (3.7 lb) of refrigerant which has a CO <sub>2</sub> equivalent 2.431 metric tonnes (2.679 tons).

# STANDARD & OPTIONAL EQUIPMENT

Standard and optional equipment may vary. Consult your Cat dealer for details.

OPERATOR ENVIRONMENT	STANDARD	OPTIONAL
Air conditioning (HVAC) with 10 vents and filter unit located outside of cab	●	
Bucket/work tool function lockout	●	
Cab, pressurized and sound suppressed	●	
Camera, rearview	●	
CB radio ready		●
Computerized monitoring system	●	
Mirrors, rearview external with integrated spot mirror	●	
Pilot hydraulic controls, lift and tilt function; two (2) single axis levers or joystick	●	
12V power port (10A)	●	
Radio ready	●	
Radio: DAB+/AM/FM/BT		●
ROPS/FOPS structure	●	
Seat, Cat Comfort (cloth), mechanical suspension	●	
Seat, high-back, air suspended		●
Seat, air suspended, heated		●
Steering column, adjustable angle	●	
Steering, secondary, electrical*		●
Switch, transmission neutralizer (adjustable) lockout	●	
Window, sliding (left and right sides)	●	
Wipers/washers (front and rear)	●	

POWERTRAIN	STANDARD	OPTIONAL
Axles, Open/Open differentials	●	
Axles, limited slip differential(s)		●
Axles, oil cooler		●
Brakes, full hydraulic enclosed wet-disc	●	
Cat C9.3B engine	●	
Engine Idle Management System (EIMS)	●	
Auto Idle Shutdown (AIS)	●	
Fan, radiator, electronically controlled, hydraulically driven, temperature sensing, on demand	●	
Fan, reversing automatic and manual control		●
Filter, fuel primary/secondary/tertiary	●	
Fuel priming pump (electric)	●	
Fuel/water separator	●	
Radiator, unit core (9.5 fpi) with ATAAC	●	
Torque converter	●	
Transmission, powershift (4F/4R), automatic (2-4) with kick-down 2-1 manual	●	

LINKAGE	STANDARD	OPTIONAL
Fusion™ quick coupler control with dual kick outs		●
Lift and bucket return-to-dig kickouts (electro-magnetic), mechanical adjustment	●	
Z-bar, cast tilt lever	●	

\* Standard where mandated.

\*\* Refer to M0106413 publication for usage requirements.

\*\*\* Not compatible with roading arrangements.

\*\*\*\* Offering depends on region.

HYDRAULICS	STANDARD	OPTIONAL
Dedicated brake and fan pump	●	
Dedicated load sensing steering pump	●	
Load sensing implement system pilot operated	●	
Ride control		●
S O-S <sup>SM</sup> oil sampling valves	●	
3 <sup>rd</sup> function with additional dedicated single axis lever		●

ELECTRICAL	STANDARD	OPTIONAL
Alarm, back-up variable/main disconnect switch	●	
Alternator (145-amp, brush type)	●	
Batteries, maintenance free (2×1,125 CCA)	●	
Ignition key; start/stop	●	
Lighting system: 4 halogen work lights, cab mounted	●	
Lighting system: 8 halogen work lights, cab mounted		●
Lighting system: 4 or 8 LED work lights, cab mounted		●
Lights: LED taillights	●	
Lights: warning beacon		●
Roading lights with high/low beam and F and R turn signals	●	
Starter, electric (heavy duty)	●	
Starting and charging system, 24V	●	

ADDITIONAL EQUIPMENT	STANDARD	OPTIONAL
Autolube system		●
Camera, front view (kit)**		●
Cat Payload scale system		●
Cat Payload ready		●
Cold weather starting basic (ether starting aid)	●	
Cold weather starting full (HD batteries 2×1,400 CCA, ether system, jacket water heater, cold weather fluids)		●
Fender rear extensions or roading		●
Grill, airborne debris	●	
Doors, service access (locking)	●	
L5 traction tires		●
L3 radial or bias ply tires	●	
Powertrain guard		●
Precleaner, strata tubes with screen		●
Product Link™ ready	●	
Reverse Stobe (kit)***		●
Roading Certification****		●
Tilt cylinder guard		●
Toolbox		●
Variable backup alarm (3dB above ambient noise)	●	
Windshield guard		●

For additional information, refer to the Technical Specifications brochure for the 966 GC model available at [www.cat.com](http://www.cat.com) or your Cat dealer.





オフロード法2014年  
基準適合

For more complete information on Cat products, dealer services and industry solutions, visit us on the web at [www.cat.com](http://www.cat.com)

Materials and specifications are subject to change without notice. Featured machines in photos may include additional equipment. See your Cat dealer for available options.

© 2023 Caterpillar. All Rights Reserved. CAT, CATERPILLAR, LET'S DO THE WORK, their respective logos, Fusion, S•O•S, Product Link, "Caterpillar Corporate Yellow", the "Power Edge" and Cat "Modern Hex" trade dress as well as corporate and product identity used herein, are trademarks of Caterpillar and may not be used without permission.

[www.cat.com](http://www.cat.com) [www.caterpillar.com](http://www.caterpillar.com)

AEXQ3411-01 (4-2023)  
Build Number: 01B  
(N Am, Europe, S. Korea, China,  
Japan, Turkey, Chile)

