



Cat[®] Hammers

Performance Models

H110 S, H115 S, H120 S, H130 S, H140 S,
H160 S, H180 S, H190 S, H215 S

Technical Specifications

Not all attachments are available in all regions. Consult your Cat[®] dealer for specific configurations available in your region.

Table of Contents

Specifications	2
Hydraulic Specifications	3
Dimensions	4
Hammer Tool Specifications	5
Machine Matching.....	7

Hammer Technical Specifications

Specifications

Model	Mount	Part No.	Linkage	Recommended Carrier Weight, Minimum		Recommended Carrier Weight, Maximum		Operating Weight, Minimum	
				t	lb	t	lb	kg	lb
H110 S	Top	635-5895		11	24,300	18	39,700	950	2,090
H115 S	Top	635-5894	B,CB	12	26,500	20	44,100	1070	2,354
H120 S	Top	635-5887	B,CB,DB	16	35,300	27	59,500	1480	3,256
H130 S	Top	635-5889	B,CB,DB	18	39,700	36	79,400	1750	3,850
H140 S	Top	635-5890	CB,DB,TB	24	52,900	42	92,600	2410	5,302
H160 S	Top	635-5892	DB,TB,UB	32	70,600	55	121,300	3230	7,106
H180 S	Top	635-5893	TB,UB,VB/VB2	42	92,610	76	167,580	3990	8,778
H190 S	Top	570-5968	TB,UB,VB2/WB2, CW55,CW70	43	94,798	80	176,368	5200	11,440
H215 S	Top	570-6109	VB2,WB2,HB2,JC, CW70	65	143,299	120	264,552	7400	16,280

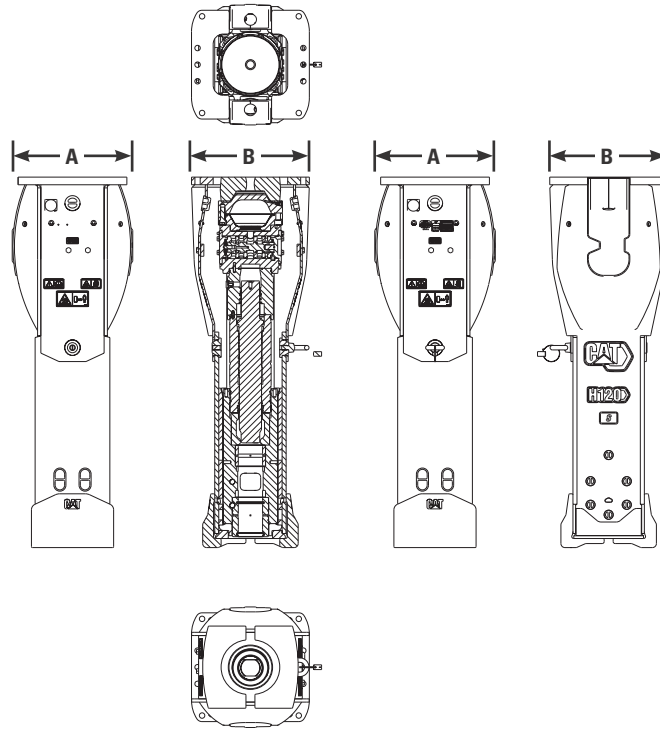
Hammer Technical Specifications

Hydraulic Specifications

Model	Mount	Part No.	Blows Per Minute		Rated Flow				Operating Pressure			
					Minimum		Maximum		Minimum		Maximum	
			Minimum	Maximum	lpm	gpm	lpm	gpm	kPa	psi	kPa	psi
H110 S	Top	635-5895	450	1,000	60	16	120	32	13 000	1,885	16 000	2,320
H115 S	Top	635-5894	370	800	70	19	130	34	13 000	1,885	15 000	2,175
H120 S	Top	635-5887	350	620	100	26	170	45	13 000	1,885	15 000	2,175
H130 S	Top	635-5889	320	600	120	32	220	58	13 000	1,885	15 000	2,175
H140 S	Top	635-5890	325	540	160	42	230	61	13 000	1,885	16 000	2,320
H160 S	Top	635-5892	400	505	220	58	300	79	13 000	1,885	16 000	2,320
H180 S	Top	635-5893	275	450	220	58	300	79	13 000	1,885	16 000	2,320
H190 S	Top	570-5968	370	530	280	74	380	101	16 000	2,320	17 000	2,465
H215 S	Top	570-6109	290	510	360	95	450	119	17 000	2,465	18 000	2,610

Hammer Technical Specifications

Dimensions



Model	Mount	Part No.	(A) Width		(B) Length, Top		Height	
			mm	in	mm	in	mm	in
H110 S	Top	635-5895	555	21.9	585	23.0	2024	79.7
H115 S	Top	635-5894	555	21.9	585	23.0	2191	86.3
H120 S	Top	635-5887	578	22.8	585	23.0	2372	93.4
H130 S	Top	635-5889	627	24.7	585	23.0	2560	100.8
H140 S	Top	635-5890	670	26.4	585	23.0	2759	108.6
H160 S	Top	635-5892	736	29.0	730	28.7	3057	120.4
H180 S	Top	635-5893	758	29.8	730	28.7	3257	128.2
H190 S	Top	570-5968	934	36.8	840	33.1	3329	131.1
H215 S	Top	570-6109	1101	43.3	1050	41.3	3507	138.1

Hammer Technical Specifications

Hammer Tool Specifications

Hammer Model	Tool Family	Tool Subfamily	Part No.	Total Length		Working Length		Diameter, Top		Diameter, Bottom		Weight	
				mm	in	mm	in	mm	in	mm	in	kg	lb
H110 S	Standard	Blunt	355-5887	890	35.0	496	19.5	100	3.9	100	3.9	53	117
	Standard	Chisel	355-5882	890	35.0	496	19.5	100	3.9	100	3.9	50	111
	Standard	Moil	355-5884	890	35.0	496	19.5	100	3.9	100	3.9	50	111
	Specialty	Long Chisel	373-4914	1000	39.4	606	23.9	100	3.9	100	3.9	57	126
	Specialty	Long Moil	373-4916	1000	39.4	606	23.9	100	3.9	100	3.9	57	125
	WearFlex	Blunt	468-8005	890	35.0	496	19.5	100	3.9	100	3.9	53	117
	WearFlex	Chisel	468-8031	890	35.0	496	19.5	100	3.9	100	3.9	50	111
	WearFlex	Moil	468-8013	890	35.0	496	19.5	100	3.9	100	3.9	50	111
H115 S	Standard	Blunt	355-5880	980	38.6	549	21.6	110	4.3	110	4.3	70	153
	Standard	Chisel	355-5878	980	38.6	549	21.6	110	4.3	110	4.3	66	145
	Standard	Moil	355-5879	980	38.6	549	21.6	110	4.3	110	4.3	66	145
	Specialty	Long Chisel	373-4917	1080	42.5	649	25.6	110	4.3	110	4.3	73	161
	Specialty	Long Moil	373-4918	1080	42.5	649	25.6	110	4.3	110	4.3	73	161
	WearFlex	Blunt	468-8006	980	38.6	549	21.6	110	4.3	110	4.3	70	154
	WearFlex	Chisel	468-8032	980	38.6	549	21.6	110	4.3	110	4.3	66	145
	WearFlex	Moil	468-8014	980	38.6	549	21.6	110	4.3	110	4.3	66	145
H120 S	Standard	Blunt	355-5867	1075	42.3	597	23.5	120	4.7	120	4.7	92	202
	Standard	Chisel	355-5865	1075	42.3	597	23.5	120	4.7	120	4.7	86	190
	Standard	Moil	355-5866	1075	42.3	597	23.5	120	4.7	120	4.7	86	190
	Specialty	Long Chisel	373-4919	1175	46.3	697	27.4	120	4.7	120	4.7	95	210
	Specialty	Long Moil	373-4920	1175	46.3	697	27.4	120	4.7	120	4.7	95	209
	WearFlex	Blunt	468-8007	1075	42.3	597	23.5	120	4.7	120	4.7	92	202
	WearFlex	Chisel	468-8033	1075	42.3	597	23.5	120	4.7	120	4.7	86	190
	WearFlex	Moil	468-8017	1075	42.3	597	23.5	120	4.7	120	4.7	86	190
H130 S	Standard	Blunt	355-5877	1150	45.3	647	25.5	130	5.1	130	5.1	115	254
	Standard	Chisel	355-5868	1150	45.3	647	25.5	130	5.1	130	5.1	108	239
	Standard	Moil	355-5876	1150	45.3	647	25.5	130	5.1	130	5.1	108	239
	Specialty	Hard Rock Chisel	373-4923	1150	45.3	647	25.5	130	5.1	130	5.1	105	231
	Specialty	Long Chisel	373-4921	1250	49.2	747	29.4	130	5.1	130	5.1	119	262
	Specialty	Long Moil	373-4922	1250	49.2	747	29.4	130	5.1	130	5.1	119	261
	WearFlex	Blunt	468-8008	1150	45.3	647	25.5	130	5.1	130	5.1	115	254
	WearFlex	Chisel	468-8034	1150	45.3	647	25.5	130	5.1	130	5.1	109	239
	WearFlex	Moil	468-8021	1150	45.3	647	25.5	130	5.1	130	5.1	108	239
H140 S	Standard	Blunt	374-3622	1200	47.2	652	25.7	140	5.5	140	5.5	140	309
	Standard	Chisel	374-3620	1200	47.2	652	25.7	140	5.5	140	5.5	131	289
	Standard	Moil	374-3621	1200	47.2	652	25.7	140	5.5	140	5.5	130	287
	Specialty	Hard Rock Chisel	423-1654	1200	47.2	652	25.7	140	5.5	140	5.5	127	281
	Specialty	Long Chisel	423-1659	1350	53.1	802	31.6	140	5.5	140	5.5	149	329
	Specialty	Long Moil	423-1660	1350	53.1	802	31.6	140	5.5	140	5.5	149	329
	Specialty	Super Blunt	423-1662	1250	49.2	702	27.6	140	5.5	150	5.9	157	347
	WearFlex	Blunt	468-8010	1200	47.2	652	25.7	140	5.5	140	5.5	140	309
	WearFlex	Chisel	468-8035	1200	47.2	652	25.7	140	5.5	140	5.5	131	289
	WearFlex	Moil	468-8023	1200	47.2	652	25.7	140	5.5	140	5.5	131	289

(continued on next page)

Hammer Technical Specifications

Hammer Tool Specifications (continued)

Hammer Model	Tool Family	Tool Subfamily	Part No.	Total Length		Working Length		Diameter, Top		Diameter, Bottom		Weight	
				mm	in	mm	in	mm	in	mm	in	kg	lb
H160 S	Standard	Blunt	374-3625	1400	55.1	753	29.6	156	6.1	160	6.3	211	465
	Standard	Chisel	374-3623	1400	55.1	753	29.6	156	6.1	160	6.3	197	434
	Standard	Moil	374-3624	1400	55.1	753	29.6	156	6.1	160	6.3	198	436
	Specialty	Hard Rock Chisel	423-1663	1400	55.1	753	29.6	156	6.1	160	6.3	191	421
	Specialty	Long Chisel	423-1664	1530	60.2	883	34.8	156	6.1	160	6.3	217	479
	Specialty	Long Moil	423-1665	1530	60.2	883	34.8	156	6.1	160	6.3	218	481
	Specialty	Super Blunt	423-1667	1450	57.1	803	31.6	156	6.1	175	6.9	242	533
	WearFlex	Blunt	468-8011	1400	55.1	753	29.6	156	6.1	160	6.3	211	465
	WearFlex	Chisel	468-8036	1400	55.1	753	29.6	156	6.1	160	6.3	197	434
	WearFlex	Moil	468-8029	1400	55.1	753	29.6	156	6.1	160	6.3	198	436
H180 S	Standard	Chisel	374-3626	1500	59.1	761	29.9	175	6.9	180	7.1	266	587
H190 S	Standard	Blunt	570-6095	1400	55.1	454	17.9	190	7.5	190	7.5	294	648
	Standard	Chisel	570-6097	1550	61.0	617	24.3	190	7.5	190	7.5	305	673
	Specialty	Hard Rock Chisel	570-6099	1550	61.0	617	24.3	190	7.5	190	7.5	291	642
	Specialty	Limestone Chisel	570-6100	1550	61.0	617	24.3	190	7.5	190	7.5	314	692
	Standard	Moil	570-6096	1550	61.0	617	24.3	190	7.5	190	7.5	298	657
	Standard	Pyramidal	570-6098	1550	61.0	617	24.3	190	7.5	190	7.5	296	653
	Specialty	Super Blunt	570-6101	1400	55.1	454	17.9	190	7.5	197	7.8	306	675
H215 S	Standard	Blunt	570-6222	1600	63.0	537	21.1	215	8.5	215	8.5	431	950
	Standard	Chisel	570-6220	1550	61.0	487	19.2	215	8.5	215	8.5	394	869
	Specialty	Hard Rock Chisel	570-6224	1550	61.0	487	19.2	215	8.5	215	8.5	376	829
	Specialty	Limestone Chisel	570-6225	1550	61.0	487	19.2	215	8.5	215	8.5	407	897
	Standard	Moil	570-6221	1550	61.0	487	19.2	215	8.5	215	8.5	379	836
	Standard	Pyramidal	570-6223	1550	61.0	487	19.2	215	8.5	215	8.5	382	842

Hammer Technical Specifications

Machine Matching

Refer to the machine technical specifications for configuration specific matching. Consult your Cat dealer for configuration availability in your region.

Match No Match

Mount		Top								
Model		H110 S	H115 S	H120 S	H130 S	H140 S	H160 S	H180 S	H190 S	H215 S
TRACKED EXCAVATORS										
Model	Build No.									
311F		✓								
312D2		✓	✓							
312 GC	05	✓	✓							
313D2		✓	✓							
313D2 GC		✓	✓							
313F		✓	✓							
313F GC		✓	✓							
313 GC	05	✓	✓							
313 GC	07	✓	✓							
313	05	✓	✓							
313	07	✓	✓							
315F CR		✓	✓							
315 GC	07	✓	✓							
315	07	✓	✓							
316F		✓	✓							
316 GC	05	✓	✓							
317 GC	07	✓	✓	✓						
317	07	✓	✓	✓						
317	07D	✓	✓	✓						
318F			✓	✓						
318 GC	05	✓	✓	✓						
320D2			✓	✓	✓					
320D2 GC			✓	✓	✓					
320F			✓	✓	✓					
320 GC	07		✓	✓	✓					
320 GC N	07		✓	✓	✓					
320 GX	05		✓	✓	✓					
320	07		✓	✓	✓					
323D2				✓	✓					
323F				✓	✓					
323 N	07			✓	✓					
323 GC	07			✓	✓					
323 GX	05			✓	✓					
323	07			✓	✓					
325F CR				✓	✓					
325 RR	07			✓	✓					
325 TNL	07			✓	✓	✓				
325	07			✓	✓	✓				
326D2				✓	✓	✓				
326F				✓	✓	✓				
326 GC	07C			✓	✓	✓				
326 GC	07D			✓	✓	✓				
326	07C			✓	✓	✓				
326	07D			✓	✓	✓				
330D2					✓	✓				
330F					✓	✓	✓			
330 GC	07				✓	✓	✓			
330	07				✓	✓	✓			
330 UHD	07				✓	✓	✓			
335F CR					✓	✓				
333	07				✓	✓	✓			
335	07				✓	✓	✓			

(continued on next page)

Hammer Technical Specifications

Machine Matching (continued)

Refer to the machine technical specifications for configuration specific matching. Consult your Cat dealer for configuration availability in your region.

Match No Match

Mount		Top								
Model		H110 S	H115 S	H120 S	H130 S	H140 S	H160 S	H180 S	H190 S	H215 S
TRACKED EXCAVATORS (continued)										
Model	Build No.									
336D2						✓	✓			
336D2 GC						✓	✓			
336D2 XE						✓	✓			
336F						✓	✓			
336F XE						✓	✓			
336 GC	07					✓	✓	✓		
336	07					✓	✓	✓		
336	08					✓	✓	✓		
340D2						✓	✓	✓		
340F						✓	✓	✓		
340F UHD						✓	✓	✓		
340	07					✓	✓	✓		
340	08					✓	✓	✓		
340 UHD	07					✓	✓	✓		
340 UHD	08					✓	✓	✓		
345 GC	07						✓	✓	✓	
349D2							✓	✓	✓	
349F							✓	✓	✓	
349F XE							✓	✓	✓	
349	07						✓	✓	✓	
350	06						✓	✓	✓	
352F							✓	✓	✓	
352F XE							✓	✓	✓	
352	07						✓	✓	✓	
352	08						✓	✓	✓	
352 SB	08						✓	✓	✓	
352 UHD	07						✓	✓	✓	
355	08							✓	✓	
373	07							✓	✓	✓
374F								✓	✓	✓
374	07							✓	✓	✓
390F										✓
395	07									✓
FORESTRY EXCAVATORS										
Model	Build No.									
538 GF	07			✓	✓					
548 GF	07				✓	✓				
558 GF	07				✓	✓				
568 GF	07						✓	✓		

(continued on next page)

Hammer Technical Specifications

Machine Matching (continued)

Refer to the machine technical specifications for configuration specific matching. Consult your Cat dealer for configuration availability in your region.

Match No Match

Mount		Top								
Model		H110 S	H115 S	H120 S	H130 S	H140 S	H160 S	H180 S	H190 S	H215 S
WHEELED EXCAVATORS										
Model	Build No.									
M314F		✓	✓							
M314	07	✓	✓							
M314	07A	✓	✓							
M315D2		✓	✓							
M315F		✓	✓							
M315 GC	05	✓	✓							
M315	05	✓	✓							
M315	07	✓	✓							
M316F		✓	✓	✓						
M316	07	✓	✓	✓						
M317D2		✓	✓	✓						
M317F		✓	✓	✓						
M317	07	✓	✓	✓						
M318F		✓	✓	✓						
M318	05	✓	✓	✓						
M318	07	✓	✓	✓						
M319	07	✓	✓	✓						
M320D2			✓	✓	✓					
M320F			✓	✓	✓					
M320 GC	05		✓	✓	✓					
M320	05		✓	✓	✓					
M320	07		✓	✓	✓					
M322D2			✓	✓	✓					
M322F			✓	✓	✓					
M322	07		✓	✓	✓					
MATERIAL HANDLERS										
Model	Build No.									
M322D2 MH			✓	✓	✓					
M324D2 MH			✓	✓	✓					
MH3022	06		✓	✓	✓					
MH3022	07		✓	✓	✓					
MH3024	06		✓	✓	✓					
MH3024	06C		✓	✓	✓					
MH3024	07		✓	✓	✓					
MH3026	06C		✓	✓	✓					

For more complete information on Cat products, dealer services, and industry solutions, visit us on the web at www.cat.com.

© 2024 Caterpillar
All rights reserved

GEJQ0398-01 (09-2024)
Replaces GEJQ0398-00
(Afr-ME, Aus-NZ, Eurasia, Europe,
Japan, N Am, S Am, SE Asia)

Materials and specifications are subject to change without notice. Featured machines in photos may include additional equipment. See your Cat dealer for available options.

CAT, CATERPILLAR, LET'S DO THE WORK, their respective logos, "Caterpillar Corporate Yellow," the "Power Edge" and Cat "Modern Hex" trade dress as well as corporate and product identity used herein, are trademarks of Caterpillar and may not be used without permission.

