

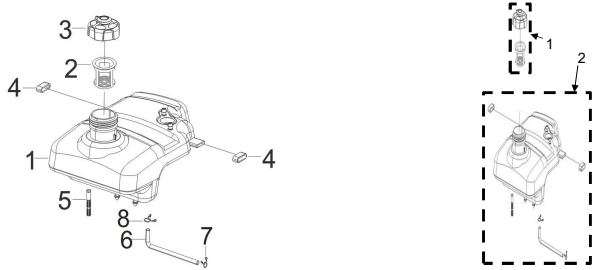
## INV2000 - North America

### Important Information

The service parts list information provided within the Parts Diagram document is all inclusive of the service parts which are presently available for the defined model. Not all individual parts are serviceable at the piece part level. If an itemized part does not have a defined corresponding service part listed, the defined group level service part must be ordered.

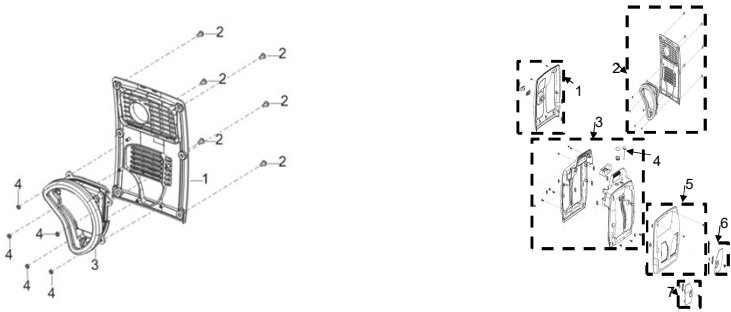
REF.NO.	CAT Part Number	DESCRIPTION	L mm	W mm	H mm	Weight (g)	QTY	CAT Group Part Number	CAT Part Name	Qty	Group Name	L mm	W mm	H mm	Weight (g)
	INV2000	Engine					1	INV2000	Engine	1	Engine				

**FIG.2 TANK, FUEL (E02)**



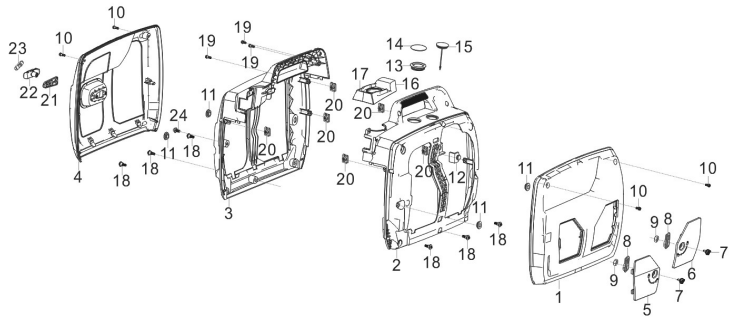
REF.NO.	CAT Part Number	DESCRIPTION	L mm	W mm	H mm	Weight (g)	QTY	CAT Group Part Number	CAT Part Name	Qty	Group Name	L mm	W mm	H mm	Weight (g)
E02-2		FUEL FILTER	90	40	40	15	1	517-9216	CAP GP-FUEL	1	Fuel Cap Group	130	65	65	60
E02-3		COVER, FUEL TANK	65	65	37	45	1								
E02-1		TANK, FUEL	310	235	200		1								
E02-4		BUSH	30	12	12		2								
E02-5		ELEMENT, STRAINER					1	517-9217	TANK GP-FUEL	1	Fuel Tank Group	310	250	240	933
E02-6		TUBE, FUEL					1								
E02-7		COLLAR	20	8	20	1.6	2								
E02-8		COLLAR	20	8	20	1.6	1								

**FIG.3 Muffler side cover (E03)**



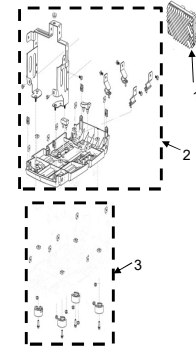
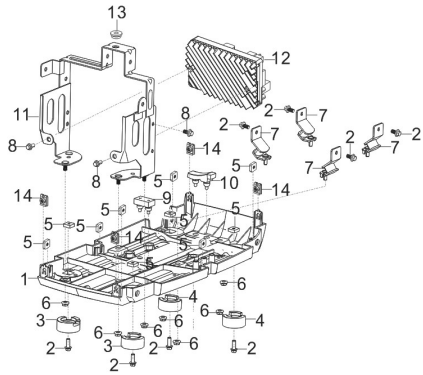
REF.NO.	CAT Part Number	DESCRIPTION	L mm	W mm	H mm	Weight (g)	QTY	CAT Group Part Number	CAT Part Name	Qty	Group Name	L mm	W mm	H mm	Weight (g)
E03-1		COVER, MUFFLER SIDE	280	185	20		1								
E03-2		BOLT	21	10	10	4	6	517-9218	COVER GP-SIDE	1	Muffler Cover Group	285	185	50	411
E03-3		CUSHION, JOINT RUBBER	175	130	42		1								
E03-4		CLIP, SPRING	14	14	1	1	5								

FIG.4 Shell, decorative board (E1 3)



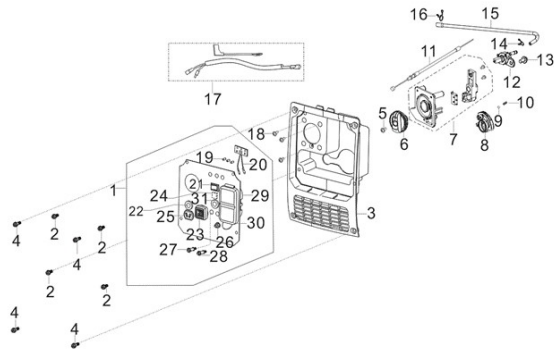
REF.NO.	CAT Part Number	DESCRIPTION	L mm	W mm	H mm	Weight (g)	QTY	CAT Group Part Number	CAT Part Name	Qty	Group Name	L mm	W mm	H mm	Weight (g)
E04-5		Left cover	145	145	15	55	1								
E04-7		Door knob	25	25	25	3	1	517-9219	DOOR GP-LH	1	Left Door Group	145	145	35	64
E04-8		Stopper	47	18	7	3	1								
E04-9		Spring collar	15	15	5	3	1								
E04-7		Door knob	25	25	25	3	1	517-9220	DOOR GP-RH	1	Right Door Group	145	145	35	64
E04-8		Stopper	47	18	7	3	1								
E04-9		Spring collar	15	15	5	3	1								
E04-6		Right cover	145	145	15	55	1								
E04-1		COVER BOARD, RIGHT	485	385	60	580	1	517-9221	COVER GP-RH	1	Right Cover Group	485	385	60	622
E04-10		Bolt	17	10	10	20	2								
E04-11		SLEEVE, FILLING OIL HOLE RUBBER	25	21	8	2	2								
E04-2		SHELL, RIGHT				700	1								
E04-3		SHELL, LEFT				700	1								
E04-12		JACKET, RUBBER					1								
E04-13		JACKET, RUBBER					1								
E04-14		GUIDE , STARTING ROPE					1								
E04-15	517-9224	COVER-SPARK PLUG	42	42	15	5	1	517-9222	COVER GP-CENTRAL	1	Central Cover Group	500	450	170	1500
E04-16		Panel trim					1								
E04-17		OPENING, OIL LEVERLER VIEW					1								
E04-18		Bolt	17	10	10	20	2								
E04-19		Bolt					3								
E04-20		NUT					6								
E04-24		BOLT					1								
E04-10		Bolt	17	10	10	20	2								
E04-11		SLEEVE, FILLING OIL HOLE RUBBER	25	21	8	2	2	517-9223	COVER GP-LH	1	Left Cover Group	485	385	60	682
E04-4		COVER BOARD, LEFT	485	385	60	600	1								
E04-21		Recoil guide plate	85	26	5	15	1								
E04-22		Recoil handle	73	22	31	15	1								
E04-23		Recoil core	20	16	16	10	1								

FIG.5 Base plate, inverter, inverter mounting frame (E14)



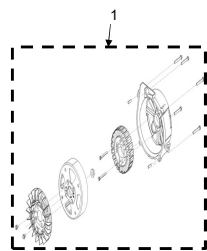
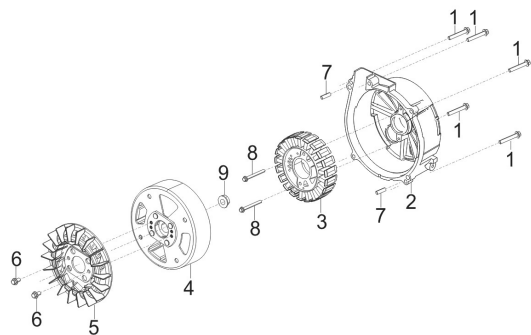
REF.NO.	CAT Part Number	DESCRIPTION	L mm	W mm	H mm	Weight (g)	QTY	CAT Group Part Number	CAT Part Name	Qty	Group Name	L mm	W mm	H mm	Weight (g)
E14-1		PLATE, BOTTOM					1	517-9227	FRAME GP-ENGINE	1	Frame Group	470	265	260	1970
E14-7		CUSHION, ENGINE FRAME				4									
E14-8		BOLT				3									
E14-9		BRACKET, CUSHION RUBBER				1									
E14-10		BRACKET, CUSHION RUBBER				1									
E14-11		ASSEMBLING FRAME, INVERTER				1									
E14-13		SLEEVE, FUEL TANK RUBBER				1									
E14-14		NUT				4	517-9225	SUPPORT GP-FRAME	1	Frame Support Group	10	45	45	96	
E14-2		BOLT				8									
E14-3		SEAT,FRAME				2									
E14-4		SEAT,FRAME				2									
E14-5		NUT				10									
E14-6		NUT				8									
E14-12	517-9226	INVERTER	185	110	100	1317	1								

FIG.6 Control panel components, panel base (F05)



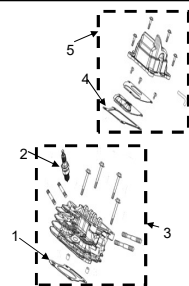
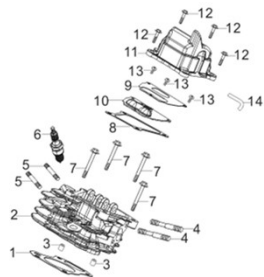
REF.NO.	CAT Part Number	DESCRIPTION	L mm	W mm	H mm	Weigh t (g)	QTY	CAT Group Part Number	CAT Part Name	Qty	Group Name	L mm	W mm	H mm	Weigh t (g)
F05-1		GFCI CONTROL PANEL					1								
F05-2		SCREW, CROSS GROOVE PAN	18	8	8	2	4	517-9229	PANEL GP-CONTROL (BASIC)	1	Control Panel Group	275	190	70	720
F05-3		SEAT, PANEL					1								
F05-4		Bolt	21	10	10	4	4								
F05-18		SCREW, CROSS GROOVE PAN					3								
F05-5		SCREW					1								
F05-6	501-5455	KNOB					1								
F05-7		Switch Assembly					1	517-9230	SWITCH GP	1	Generator Switch Group	80	70	60	142
F05-8		Cover plate					1								
F05-9		BALL, STEEL					1								
F05-10		SPRING, STOPPER ADJUSTING					1								
F05-11		HANDLE SUBASSEMBLY, CHOKE					1								
F05-12		COCK ASSY, FUEL					1								
F05-13		BOLT					1								
F05-14		COLLAR	20	8	20	1.6	1	517-9231	LINES GP-FUEL	1	Fuel Line Group	210	40	20	23
F05-15		TUBE, FUEL					1								
F05-16		COLLAR					1								
F05-17	517-9228	HARNESS-CONTROL PANEL	100	50	50	50	1								
F05-19		Indicator seat					3	530-1201	LIGHT AS	1	Indicator Light Assembly	75	30	20	25
F05-20		Indicator assy					1								
F05-21		ESC SWITCH SUBASSEMBLY					1								
F05-22	501-5361	PROTECTOR, OVERCURRENT	29.4	14.5	46.6	13	1								
F05-23	530-1194	SOCKET SUBASSEMBLY, POWER SUPPLY	60	30	35	18	1								
F05-24		BRIDGE, RECTIFICATION					1								
F05-25	530-1197	SOCKET SUBASSEMBLY, D.C	26	20	23	20	1								
F05-26	530-1193	GROUNDING TERMINAL COMBINATION	25	10	10	15	1								
F05-27		PARALLEL SOCKET, POWER SUPPLY					1								
F05-28		PARALLEL SOCKET, POWER SUPPLY					1								
F05-29	501-5371	GFCI SOCKET	91.7	40.8	38.7	91	1								
F05-30	501-5372	RAIN COVER	94.1	47.1	18	19.5	1								
F05-31	530-1196	PROTECTOR, OVERCURRENT	35	18	45	25	1								

FIG.7 ROTOR/STATOR (F06)



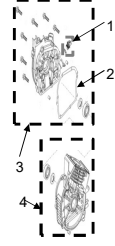
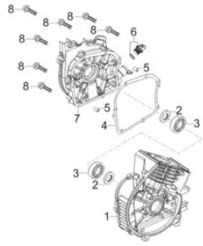
REF.NO.	CAT Part Number	DESCRIPTION	L mm	W mm	H mm	Weight (g)	QTY	CAT Group Part Number	CAT Part Name	Qty	Group Name	L mm	W mm	H mm	Weight (g)
F06-1		BOLT					5	517-9232	ALTERNATOR GP	1	ALTERNATOR	250	200	110	3835
F06-2		SHROUD, MOTOR				1									
F06-3		STATOR COMP.				1									
F06-4		ROTOR COMP.				1									
F06-5		IMPELLER				1									
F06-6		BOLT				2									
F06-7		PIN				2									
F06-8		BOLT				2									
F06-9		NUT				1									

FIG.8 HEAD SUBASSEMBLY, CYLINDER / PLUG, SPARK (E04)



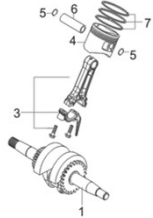
REF.NO.	CAT Part Number	DESCRIPTION	L mm	W mm	H mm	Weight (g)	QTY	CAT Group Part Number	CAT Part Name	Qty	Group Name	L mm	W mm	H mm	Weight (g)
E04-1	517-9233	GASKET, CYLINDER HEAD	86	80	1	5	1	517-9236	HEAD GP-CYLINDER (BASIC)	1	Cylinder Head Group	140	100	70	611
E04-2		HEAD SUBASSEMBLY, CYLINDER				1									
E04-3		PIN				2									
E04-4		STUD				2									
E04-5		STUD				2									
E04-6	517-9234	PLUG, SPARK	68	18	18	30	1	517-9237	COVER GP-CYLINDER HEAD	1	Cylinder Head Cover Group	115	70	65	183
E04-7		BOLT, CYLINDER HEAD				4									
E04-8	517-9235	GASKET, CYLINDER HEAD COVER	100	72	3	2	1								
E04-9		PIECE, BREATH				1									
E04-10		GASKET, BREATH GROOVE				1									
E04-11		COVER SUBASSEMBLY, CYLINDER HEAD				1									
E04-12		BOLT				4									
E04-13		SCREW				3									
E04-14		TUBE, BREATHER				1									

FIG.9 CRANKCASE./COVER SUBASSEMBLY, CRANKCASE (E05)



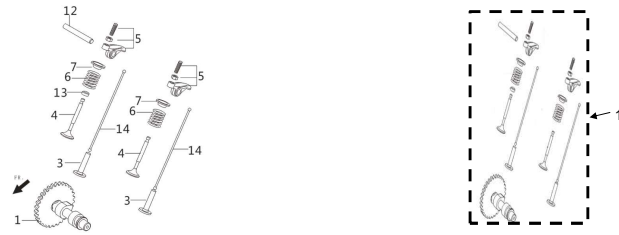
REF.NO.	CAT Part Number	DESCRIPTION	L mm	W mm	H mm	Weight (g)	QTY	CAT Group Part Number	CAT Part Name	Qty	Group Name	L mm	W mm	H mm	Weight (g)
E05-1		CRANKCASE SUBASSEMBLY.					1	517-9240	CRANKCASE GP	1	Crankcase Group	230	225	120	2054
E05-2		OIL-SEAL				2									
E05-3		BEARING				2									
E05-4	517-9238	GASKET, CRANKCASE	160	170	1	1	517-9241	COVER GP-REAR	1	Crankcase Cover Group	280	215	40	887	
E05-5		PIN				2									
E05-6	517-9239	PLUG SUBASSEMBLY, ENGINE OIL	27	27	67	7									
E05-7		COVER, CRANKCASE				1									
E05-8		BOLT				7									

FIG.10 RING SET,OIL / ROD,CRANKSHAFT CONNETING (E06)



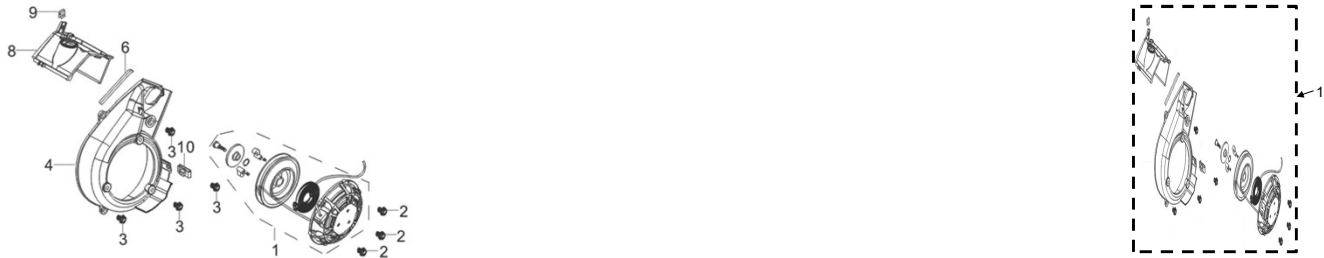
REF.NO.	CAT Part Number	DESCRIPTION	L mm	W mm	H mm	Weight (g)	QTY	CAT Group Part Number	CAT Part Name	Qty	Group Name	L mm	W mm	H mm	Weight (g)
E06-1		CRANKSHAFT ASSY.					1	517-9243	CRANKSHAFT GP	1	Crankshaft Group	240	70	70	1122
E06-3		ROD, CONNECTING				1									
E06-4		PISTON				1									
E06-5		CLIP, PISTON PIN				2									
E06-6		PIN, PISTON				1									
E06-7	517-9242	RING ASSY, PISTON	51	51	9	10	1								

FIG.11 TRAIN,VALVE / CAMSHAFT SUBASSEMBLY (E07)



REF.NO.	CAT Part Number	DESCRIPTION	L mm	W mm	H mm	Weight (g)	QTY	CAT Group Part Number	CAT Part Name	Qty	Group Name	L mm	W mm	H mm	Weight (g)
E07-1		CAMSHAFT ASSY.				251	1	522-2702	CAMSHAFT GP	1	Camshaft Group	73	73	110	376
E07-3		TAPPET, VALVE				125	2								
E07-4		VALVE SET					1								
E07-5		ROCKER SUBASSEMBLY, VALVE					2								
E07-6		SPRING, VALVE					2								
E07-7		SEAT, VALVE SPRING					2								
E07-12		SHAFT, VALVE ROCKER					1								
E07-13		GUIDE, SEAL					1								
E07-14		LIFTER, VALVE					2								

FIG.12 STARTER,RECOIL (E08)



REF.NO.	CAT Part Number	DESCRIPTION	L mm	W mm	H mm	Weight (g)	QTY	CAT Group Part Number	CAT Part Name	Qty	Group Name	L mm	W mm	H mm	Weight (g)
E08-1		STARTER ASSY, RECOIL					1	522-2703	PULLEY GP-CSHAFT	1	Recoil Starter Group	300	215	100	56
E08-2		BOLT					3								
E08-3		BOLT					4								
E08-4		SHROUD					1								
E08-6		STRIP, SHROUD SEAL					1								
E08-8		AIR DEFLECTOR, CYLINDER HEAD					1								
E08-9		LIMIT CARD					1								
E08-10		NUT					1								

FIG.13 CARBURETOR ASSY. (E11)



REF.NO.	CAT Part Number	DESCRIPTION	L mm	W mm	H mm	Weight (g)	QTY	CAT Group Part Number	CAT Part Name	Qty	Group Name	L mm	W mm	H mm	Weight (g)
E11-1		GASKET, CARBURETOR					1								
E11-2		PLATE, CARBURETOR INSULATOR					1	522-2705	GASKET GP	1	Carburetor Gasket Group	60	50	13	13
E11-3		GASKET, CARBURETOR INSULATOR					1								
E11-4		CARBURETOR ASSY.					1								
E11-5	522-2704	FUEL FILTER	20	5	5	1	1	522-2706	CARBURETOR GP (BASIC)	1	Carburetor Group	145	95	85	370
E11-6		CAP					1								
E11-7		TUBE, FUEL					1								
E11-8	501-5456	HIGH ALTITUDE KIT 1(3000-6000ft)					1								
	501-5457	HIGH ALTITUDE KIT 2(6000-8000ft)					1								

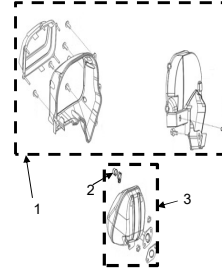
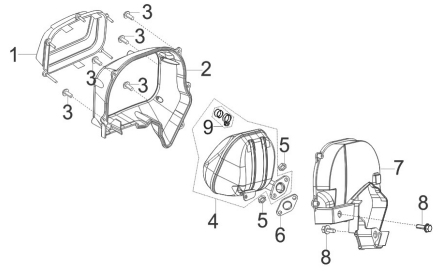
FIG.14 CLEANER, AIR (F02)



REF.NO.	CAT Part Number	DESCRIPTION	L mm	W mm	H mm	Weight (g)	QTY	CAT Group Part Number	CAT Part Name	Qty	Group Name	L mm	W mm	H mm	Weight (g)
F02-2		GASKET, AIR CLEANER	60	45	2	3	1								
F02-3		DUCT, AIR CLEANER INTAKE					1								
F02-4		NUT					2	530-1182	HOUSING GP-FILTER	1	Air Filter Group	150	120	75	264
F02-1		CLEANER, AIR					1								
F02-5		BOLT					1								
F02-6		BOLT					1								
F02-7		ELEMENT, AIR CLEANER					1	530-1181	ELEMENT GP	1	Air Filter	125	105	20	6
F02-8		RING, SEAL					1								

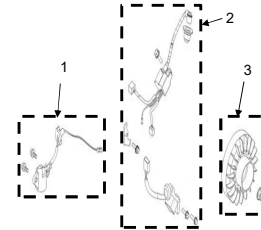
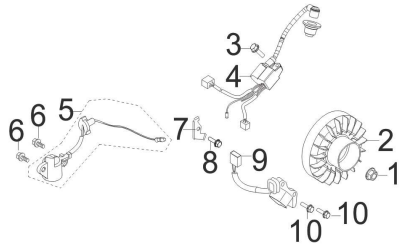


FIG.15 MUFFLER ASSY. (F04)



REF.NO.	CAT Part Number	DESCRIPTION	L mm	W mm	H mm	Weight (g)	QTY	CAT Group Part Number	CAT Part Name	Qty	Group Name	L mm	W mm	H mm	Weight (g)
F04-1		COVER, MUFFLER SIDE					1	530-1184	INSULATION GP-MUFFLER	1	Muffler Insulation Group	240	230	160	474
F04-2		SHROUD, MUFFLER				1									
F04-3		SCREW, CROSS GROOVE PAN				5									
F04-7		MUFFLER SHIELD				1									
F04-8		BOLT				2	530-1185	MUFFLER GP	1	Muffler Group	140	160	130	1206	
F04-4		MUFFLER ASSY.				1									
F04-5		NUT				2									
F04-6		GASKET, EXHAUST OUTLET				1									
F04-9	530-1183	COLLECTOR, SPARK	50	30	30	50									1

FIG.16 FLYWHEEL / IMPELLER / STARTER PULLEY / IGNITION COIL (E15)



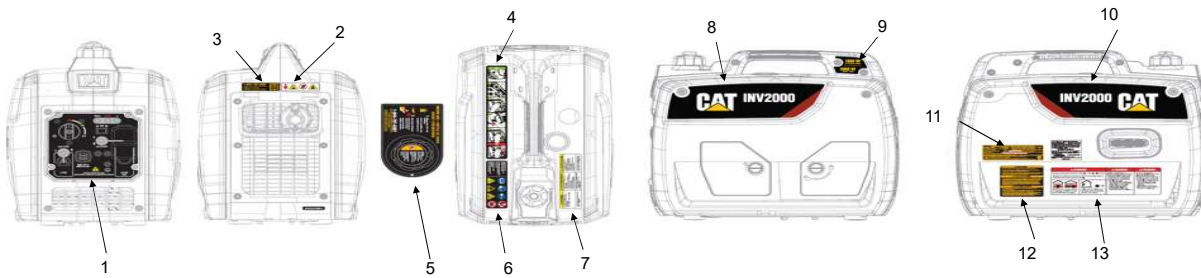
REF.NO.	CAT Part Number	DESCRIPTION	L mm	W mm	H mm	Weight (g)	QTY	CAT Group Part Number	CAT Part Name	Qty	Group Name	L mm	W mm	H mm	Weight (g)
E15-1		NUT, FLYWHEEL					1	530-1186	FLYWHEEL GP	1	Flywheel Group	150	150	70	1031
E15-2		FLYWHEEL SUBASSEMBLY				1									
E15-3		BOLT					1	530-1187	COIL GP-IGNITION	1	Ignition Coil Group	300	90	50	200
E15-4		IGNITOR				143									
E15-7		CLAMP				1									
E15-8		BOLT				1									
E15-9		COIL, IGNITION				1									
E15-10		BOLT				2	530-1188	SENSOR GP-LEVEL	1	Oil Level Sensor Group	70	50	45	50	
E15-5		SENSOR, ENGINE OIL				1									
E15-6		BOLT				2									

FIG.17 Tool Kit



REF.NO.	CAT Part Number	DESCRIPTION	L mm	W mm	H mm	Weight (g)	QTY	CAT Group Part Number	CAT Part Name	Qty	Group Name	L mm	W mm	H mm	Weight (g)
E15-1		2-PIECE SPARK PLUG WRENCH					1	501-5449	TOOL GP	1	Tool kit	230	120	40	300
E15-2		TOOL KIT BAG				1									
E15-3		SCREW-DRIVER PHILLIPS HEAD				1									
E15-4		OIL FILL FUNNEL 1				1									
		OIL FILL FUNNEL 2				1	589-6141	FILLER GP-OIL	1						
		OIL FILL FUNNEL 3				1									
E15-5	589-6253	CABLE, CHARGE					1								

FIG.18 North American Decals



REF.NO.	CAT Part Number	DESCRIPTION	L mm	W mm	H mm	Weight (g)	QTY	CAT Group Part Number	CAT Part Name	Qty	Group Name	L mm	W mm	H mm	Weight (g)
1		control panel info						530-1190	FILM GP (INFORMATION)	1	Information Films	250	150	2	3
3		rear info help number													
4		top info qsg													
9		left side info rating													
11		right side ratings decal													
5		top info fuel guide & safety fuel guide													
5		top info fuel guide & safety fuel guide					530-1189	FILM GP (SAFETY)	1	Safety Films	200	120	2	3	
2		rear safety													
6		top safety decals													
7		top safety written													
12		right side safety written													
13		right side safety warnings													
8		left side brand label					530-1191	FILM GP (BRAND)	1	Brand Films	320	120	1	2	
10		right side brand label													

Last Update 3-8-23