

XCMG



Providing solutions for sustainable development

For more than 30 years Xuzhou Construction Machinery Group Co., Ltd. (XCMG) has been a leading player both in the Chinese and global construction industries.

Headquartered in Xuzhou, Jiangsu, in China, the XCMG team is dedicated to delivering a wide range of construction equipment and services that its global customer base can rely on. Quality and innovation are central to its core brand values, which is why XCMG carefully selects its component suppliers.

XE750D hydraulic excavator

Since 2018 XCMG's mining division has selected Perkins' engines to provide the dependable power behind its 75-ton hydraulic excavator – the XE750D – which has a reinforced front working device with a rock bucket that can hold a large volume.

The excavator is fitted with a Perkins® 2506D-E15TA engine. Meeting China NRIII and EU Stage IIIA/U.S. EPA Tier 3 equivalent emission standards, this 15 litre engine delivers a powerful 403 kW at 2100 rpm.

As the machine's engine and hydraulics have been matched, the end user benefits from faster operating speed, higher working efficiency and low energy savings.

Key Facts

Customer
Xuzhou XCMG Mining Machinery Co. Ltd

Location
Xuzhou, Jiangsu, China

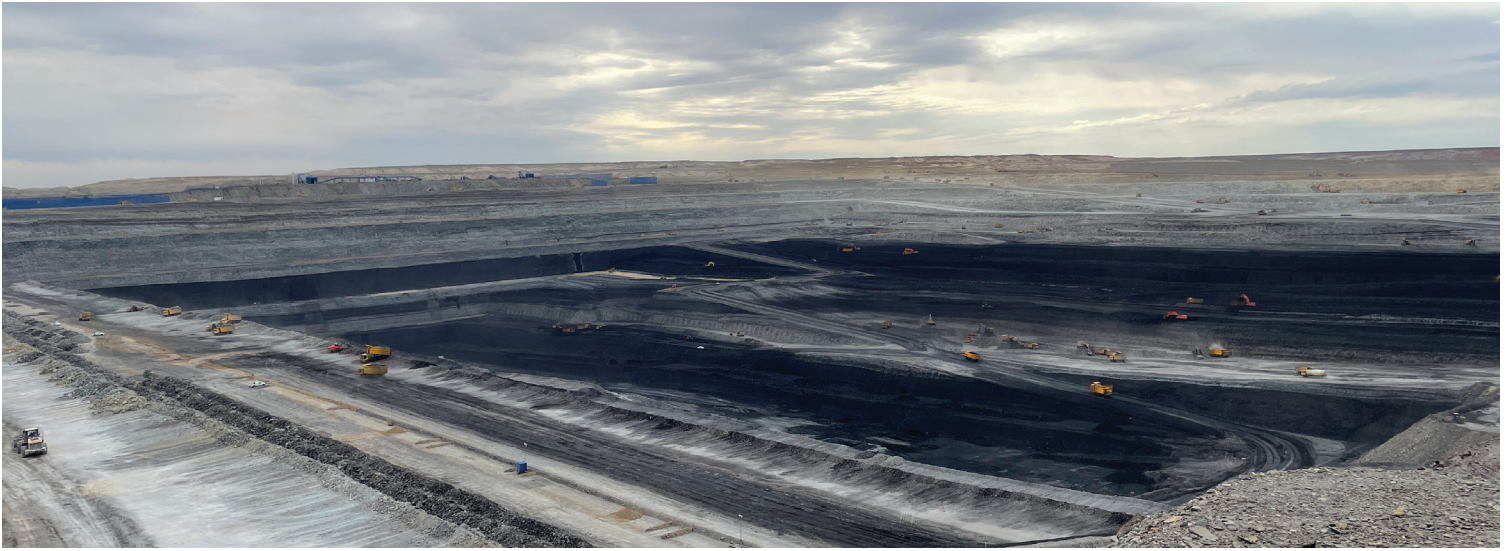
Engine model
Perkins® 2506D-E15TA

Application
Hydraulic excavator

OEM website
xcmg.com

Perkins®

THE HEART OF EVERY GREAT MACHINE



10,000 hours of safe operation

The 2506D-E15TA is a proven product and recently reached over 10,000 operating hours in one of XCMG's XE750D machines, where the excavator was put to heavy duty work in an open-pit coal mine in the Xinjiang province for an average of 20 hours a day.

"In the mining industry, hydraulic excavators operate in tough working conditions, so must be dependable and able to withstand the harsh and dusty environment," said Mr. Yong Wang, XCMG Mining division's R&D and marketing director.

"I'm pleased to say our XE750D has shown itself to be more than capable in this environment and coupled with the Perkins engine, it has proved to be reliable, whatever task has been asked of it."



"From the beginning we have enjoyed a positive collaboration with Perkins and its distributors. The teams have been able to support all our requests and the positive dialogue throughout, has helped us deliver a new generation of excavator that we're very proud of."

*Mr. Yong Wang,
XCMG Mining division's R&D and marketing director*

He continues: "The engine performed reliably throughout the 10,000 hours, which anyone who has visited an open-pit coal mine, will know is not an easy task, given the dusty working environment. Not only did the engine deliver a dependable performance, but on examination, no overhaul is currently required, which is very impressive."

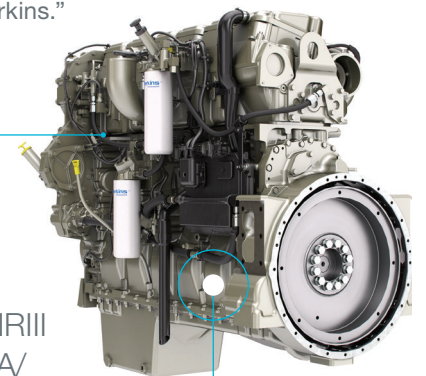
Product support network support

The Perkins distributor network—represented in China by Lei Shing Hong and Elco Power Systems has also proved invaluable to XCMG.

"From the beginning we have enjoyed a positive collaboration with Perkins and its distributors. The teams have been able to support all our requests and the positive dialogue throughout, has helped us deliver a new generation of excavator that we're very proud of," said Mr. Yong Wang.

"Once out in the field, the reassurance of the service and support from the Perkins network is also something that is invaluable to XCMG's value proposition and our end users.

"Thanks to this success, we look forward to an ongoing collaboration with Perkins."



Meeting China NRIII and EU Stage IIIA/ U.S. EPA Tier 3 equivalent emission standards, the 15 litre engine **2506D-E15TA** delivers a powerful 403 kW at 2100 rpm.