

CATERPILLAR OEM SOLUTIONS



# ARTICULATED TRUCK BARE CHASSIS SELECTION GUIDE

725 | 730 | 735 | 740 GC | 745





## **BUILT FOR THE WORK YOU DO.**

**Cat® chassis are the right choice for specialty truck bodies (coal, trash), water trucks, fuel and lube, service vehicles, container carriers, hook lifts and other machine derivatives.**

These specialty machines have proven themselves in construction, industrial, waste, material handling, quarry, and mining projects worldwide.

**And with Cat 725, 730, 735, 740 GC and 745 Articulated Truck Bare Chassis, you get exactly what you need:** a rugged, reliable platform that's built for the most important application of all—yours.





## DESIGNED TO WORK HARDER...AND SMARTER.

Besides being tough, Cat Articulated Truck Bare Chassis feature cutting-edge technology to increase productivity and lower operating costs.

- » **Advanced Productivity Electronic Control Strategy (APECS)** controls smooth-shifting transmissions, delivering improved acceleration and high productivity with low fuel consumption.
- » **True on-the-go differential locks with simple operation** improve cycle times and productivity. Automatic Traction Control (ATC) automatically modulates the correct level of Inter-Axle and Cross-Axle differential lock engagement.
- » **Spacious two-person cab** has forward-facing passenger seat and off-road oil/nitrogen front suspension cylinders to keep the operator comfortable throughout the working day.

## AVAILABLE IN STANDARD AND LONG WHEEL BASE CONFIGURATIONS.

The bare chassis arrangements are available for the 725 and 740 GC in standard wheel base, and the 730, 735, and 745 in standard and long wheel base.

The long wheel base configuration accommodates longer specialty OEM bodies, while retaining high-quality steering, braking and ride characteristics. A longer wheel base not only optimizes payload, but it can also help provide a lower center of gravity for improved safety.

*While the Bare Chassis in the long wheel base with hoist cylinders configuration is not offered as a factory option, hoist cylinders can be ordered separately for OEM / customer installation. Please contact OEM Solutions for more information.*



		Standard Wheel Base				Long Wheel Base			
Base Model	Emissions	Payload		Wheel Base Length		Payload		Wheel Base Length	
		tonnes (metric)	tons (US)	mm	in	tonnes (metric)	tons (US)	mm	in
725	Meets Tier 4 Final / EU Stage V / Japan 2014 / Korea Tier 4 Final	27.6	30.4	3979	156.7	-	-	-	-
730	Equivalent to Tier 3 / EU Stage IIIA / Japan 2006 Tier 3 or Tier 2 / EU Stage II / Japan 2001 (Tier 2)	35.3	38.9	3979	156.7	34.6	38.1	5465	215.2
	Meets Tier 4 Final / EU Stage V / Japan 2014 / Korea Tier 4 Final	34.9	38.4	3979	156.7	34.2	37.6	5465	215.2
730*	Equivalent to Tier 3 / EU Stage IIIA / Japan 2006 Tier 3 or Tier 2 / EU Stage II / Japan 2001 (Tier 2)	34.9	38.5	3979	156.7	-	-	-	-
	Meets Tier 4 Final / EU Stage V / Japan 2014 / Korea Tier 4 Final	34.5	38.0	3979	156.7	-	-	-	-
735	Equivalent to Tier 3 / EU Stage IIIA / Japan 2006 Tier 3 or Tier 2 / EU Stage II / Japan 2001 (Tier 2)	39.1	43.1	3979	156.7	38.4	42.3	5465	215.2
	Meets Tier 4 Final / EU Stage V / Japan 2014 / Korea Tier 4 Final	38.8	42.7	3979	156.7	38.0	41.9	5465	215.2
735*	Equivalent to Tier 3 / EU Stage IIIA / Japan 2006 Tier 3 or Tier 2 / EU Stage II / Japan 2001 (Tier 2)	38.7	42.7	3979	156.7	-	-	-	-
	Meets Tier 4 Final / EU Stage V / Japan 2014 / Korea Tier 4 Final	38.4	42.3	3979	156.7	-	-	-	-
740 GC	Equivalent to Tier 2 / EU Stage II / Japan 2001 Tier 2 or Tier 3 / EU Stage IIIA / Japan 2006 (Tier 3)	44.6	49.2	4126	162.4	-	-	-	-
	Meets Tier 4 Final / EU Stage V / Japan 2014 / Korea Tier 4 Final	44.2	48.7	4126	162.4	-	-	-	-
740 GC*	Equivalent to Tier 2 / EU Stage II / Japan 2001 Tier 2 or Tier 3 / EU Stage IIIA / Japan 2006 (Tier 3)	44.2	48.7	4126	162.4	-	-	-	-
	Meets Tier 4 Final / EU Stage V / Japan 2014 / Korea Tier 4 Final	43.8	48.2	4126	162.4	-	-	-	-
745	Equivalent to Tier 2 / EU Stage II / Japan 2001 Tier 2 or Tier 3 / EU Stage IIIA / Japan 2006 (Tier 3)	49.9	55	4590	180.7	49.1	54.1	5801	228.4
	Meets Tier 4 Final / EU Stage V / Japan 2014 / Korea Tier 4 Final	49.5	54.6	4590	180.7	48.6	53.6	5801	228.4
745*	Equivalent to Tier 2 / EU Stage II / Japan 2001 Tier 2 or Tier 3 / EU Stage IIIA / Japan 2006 (Tier 3)	49.3	54.4	4590	180.7	-	-	-	-
	Meets Tier 4 Final / EU Stage V / Japan 2014 / Korea Tier 4 Final	48.9	53.9	4590	180.7	-	-	-	-

\*with hoist cylinders

Rated Load or Rated Payload includes additional OEM content.



# A WORLD OF APPLICATION POSSIBILITIES.

Cat chassis are the right choice for a variety  
of specialty purpose-built machines:

WATER TRUCKS

SERVICE TRUCKS

COAL HAULERS

TRASH HAULERS

HIGH CAPACITY BODY (WASTE TRUCKS)

CONTAINER TRUCKS

OPEN BODY TRUCKS (LOGS, PIPES, ETC.)

HOOKLIFT TRUCKS

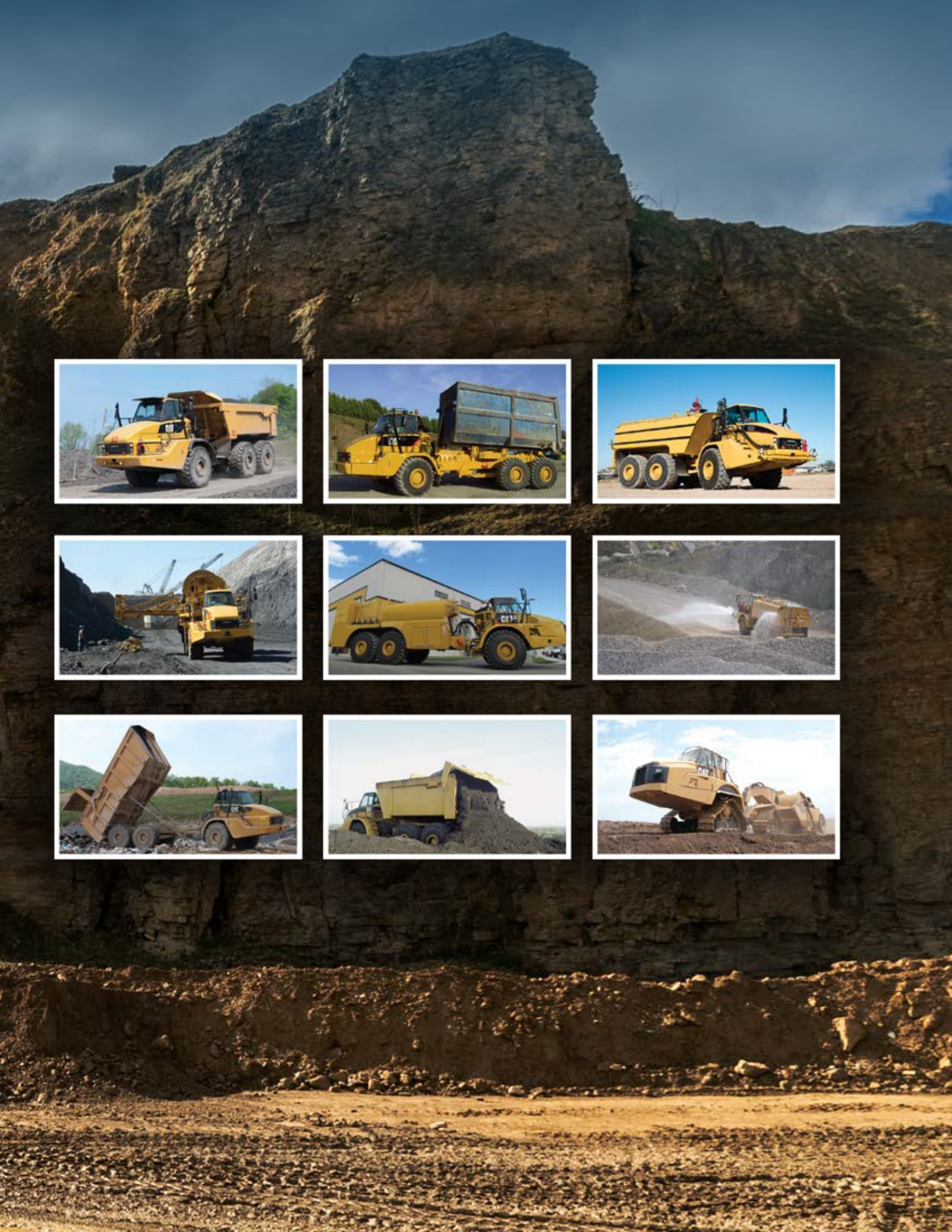
CABLE REEL TRUCKS

TOW APPLICATIONS

ON-HIGHWAY APPLICATIONS











## GET IT ALL FROM A SINGLE SOURCE.

Along with offering a bare chassis, your Cat dealer can coordinate the activity of the OEM body manufacturer with Caterpillar application and integration support, resulting in a simple, easy-to-manage acquisition process... and one tough machine that's built for your special-purpose needs.

**For more information on Cat Articulated Truck Bare Chassis, contact OEM Solutions:**

[oem\\_solutions@cat.com](mailto:oem_solutions@cat.com) | [www.cat.com/oemsolutions](http://www.cat.com/oemsolutions)

PEDJ0911 (12-2021)  
(Global)

© 2021 Caterpillar  
All rights reserved

Materials and specifications are subject to change without notice.

CAT, CATERPILLAR, LET'S DO THE WORK, their respective logos, "Caterpillar Corporate Yellow," the "Power Edge" and Cat "Modern Hex" trade dress as well as corporate and product identity used herein, are trademarks of Caterpillar and may not be used without permission.

