

# 966

## WHEEL LOADER



---

**Engine Power**  
**Operating Weight**

239 kW (321 hp)  
23 196 kg (51,124 lb)

Cat® engine meets U.S. EPA Tier 4 Final, EU Stage V, Korea Stage V, China Nonroad Stage IV and Japan 2014 emission standards.



# CAT<sup>®</sup> 966

SUPERIOR TECHNOLOGY.  
EXCELLENT PRODUCTIVITY.

The Cat<sup>®</sup> 966 Wheel Loader brings premium performance with simple-to-use technologies, helping to boost operator efficiencies and deliver consistent high bucket fill factors, resulting in highly efficient productivity. Long service intervals help to reduce your downtime. This machine is designed to meet emission standards without interrupting operation, delivering great performance, reliability, durability, and versatility, resulting in a machine that is built to meet your needs.



## WHEEL LOADERS MADE FOR MORE

Cat wheel loaders were built with efficiency in mind, offering you the best in:

- |                |                   |
|----------------|-------------------|
| + RELIABILITY  | + FUEL EFFICIENCY |
| + DURABILITY   | + TECHNOLOGY      |
| + PRODUCTIVITY | + VERSATILITY     |

Experience higher performance while reducing costs and fuel consumption with Cat wheel loaders.





## EXCELLENT PRODUCTIVITY

Auto front differential lock,\* improved neutralizer engagement,\*\* and updated on-board job aids help to deliver great machine performance.

## EFFICIENT OPERATION

Save time and money with long service intervals, in-cab maintenance reminders, Tire Pressure Monitoring System, and expanded Remote Services capability.

## BUILT-IN SAFETY

Spacious cab layout with floor-to-ceiling windshield and left footrest for added stability helps you work more safely. A 4-point seat belt kit with retractors is available. Optional Collision Warning System with Motion Inhibit and People Detection provides enhanced operator awareness at the rear of the machine.

## MAXIMIZE EFFICIENCY RIGHT FROM THE CAB

Cat wheel loaders feature integrated technologies that help make your operation more efficient.

### CAT PAYLOAD

- + Achieve precise load targets every time
- + Track daily production

### AUTODIG WITH AUTO SET TIRES

- + Boost productivity with automated loading
- + Reduce tire wear

### JOB AIDS

- + Make machine operation easier

A MORE EFFICIENT JOBSITE MEANS  
**MORE PROFIT IN EVERY LOAD.**

\*Where applicable

\*\*966 (14B) compared to the 966 (14A)



# RELIABLE, PROVEN COMPONENTS & TECHNOLOGY

Staying ahead of the competition, Caterpillar offers a wide variety of cutting-edge technologies to get the job done quickly and easily with outstanding accuracy.



## COMPONENTS YOU CAN COUNT ON

Every machine is equipped with a combination of proven electronic, hydraulic, cooling, and powertrain systems. Amplify your efficiency with better traction and enhanced work tools, delivering continuous productivity for your machine. Reliable fuel systems boost machine performance and fuel economy, lowering your overall costs and fuel consumption. You can rely on our components to save you time, money, and effort.



# PRODUCTIVE RESULTS

BUILT FOR LONG-TERM PRODUCTION

## BETTER TRACTION

New Autodig with Auto Set Tires assures that the front tires have adequate traction for consistent high bucket fill factors, delivering excellent productivity compared to previous model. Automatic front differential lock removes the burden from the operator by automatically engaging the differential lock to improve overall traction. Optional automatic front and rear locks also available.

## PERFORMANCE SERIES BUCKETS

Easy-to-load Performance Series Buckets improve material retention and reduce dig times, significantly improving productivity and fuel efficiency, resulting in unsurpassed production capabilities with increased fill factors – ranging from 100% to 115%.

## AGGREGATE HANDLER

Aggregate packages are specialized offerings for loose aggregate rehandling applications. Payloads can be increased above other applications by installing larger buckets and counterweights in compliance with Caterpillar payload policy.



## ON-BOARD JOB AIDS

Job aids help make machine operation easier, while also allowing your operators to improve and optimize their skills on the jobsite.

## POWERSHIFT TRANSMISSION

Featuring a lock-up clutch torque converter, our powertrains deliver smooth shifting, fast acceleration, and speed on grade, amplifying your performance and fuel efficiency.

## OPTIMIZED RIDE CONTROL SYSTEM

Dual accumulator system enables a better ride in loaded and unloaded situations. It improves smoothness over rough terrain, increasing confidence and efficiency and ensuring excellent material retention.

## THE RIGHT MIX OF FEATURES

Fine-tuned for the right applications:

- + EXCEPTIONAL FUEL ECONOMY, MAXIMIZED UPTIME, AND LOW MAINTENANCE COSTS
- + HIGH POWER AND PERFORMANCE ACROSS A VARIETY OF APPLICATIONS
- + ENHANCED RELIABILITY THROUGH COMMONALITY AND SIMPLICITY OF DESIGN
- + WORLD-CLASS SUPPORT FROM THE CAT DEALER NETWORK
- + DURABLE DESIGNS WITH LONG LIFE TO OVERHAUL





## HIGH PERFORMANCE POWERTRAIN

Our powertrains come standard with a lock-up clutch transmission, matching the engine power to increase fuel efficiency while delivering optimal performance.



## DURABLE AXLES

Axles are designed to handle your most extreme applications. The rear axle oscillates to  $\pm 13$  degrees for excellent stability and traction on even the roughest terrain.



## QUICK COUPLERS AND WORK TOOLS

For versatility, buckets and components can be changed without leaving the cab, allowing the machine to quickly move from task to task.



## OPTIMIZED HYDRAULICS

Our hydraulic systems come equipped with a monoblock main hydraulic valve. This design reduces weight while decreasing leak points by 40%.



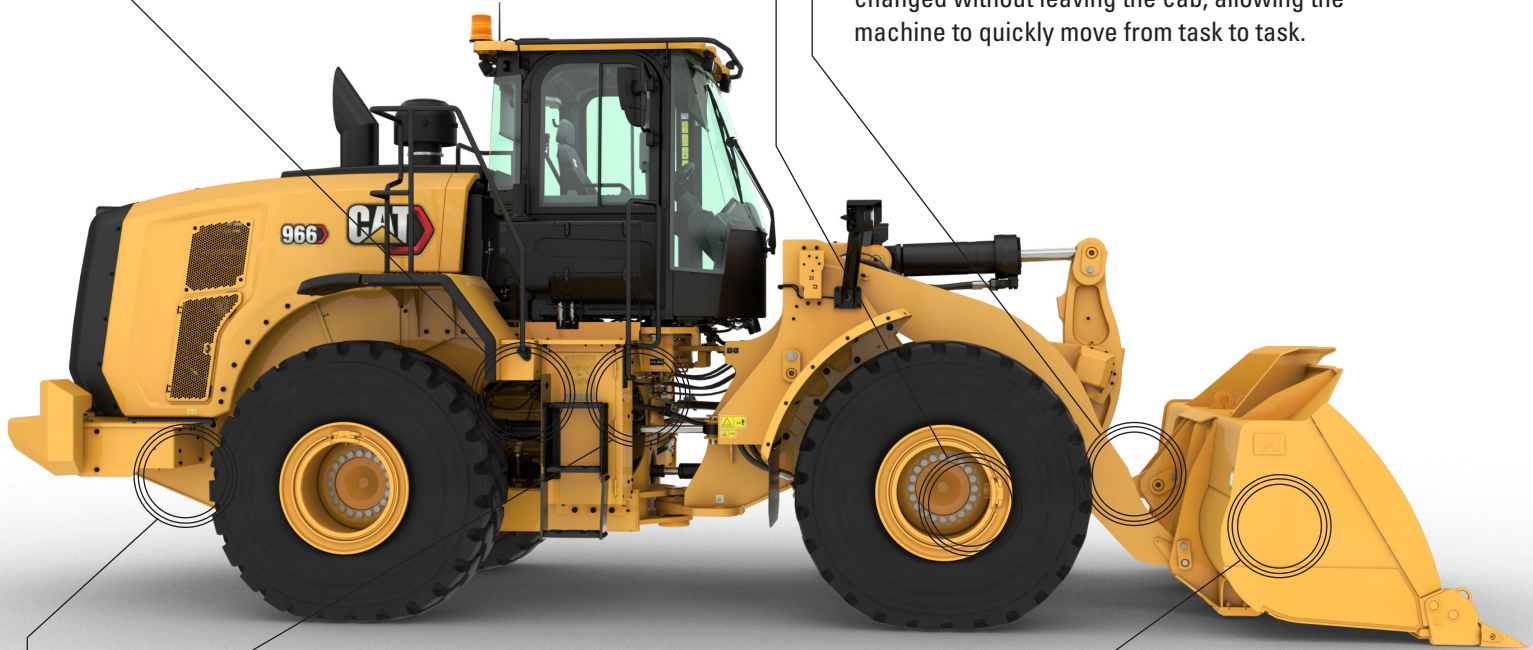
## DURABLE FRAMES

The robotically welded two-piece structural frame absorbs impact associated with excavation and loading, while the hitch system provides high bearing force capacity.



## EXTENSIVE RANGE OF ATTACHMENTS

Do more jobs with one machine. An extensive range of work tools and bucket styles are available to optimize these machines for your operation.





# INTEGRATED TECHNOLOGY SOLUTIONS

## FOR EFFICIENT & SAFER OPERATION

Your machine comes equipped with innovative Cat technologies that give you the edge. Operators of all experience levels will dig and load with more confidence, speed, and accuracy. The result? Better productivity and lower costs.

### CAT DETECT

---

Rearview camera is standard. This system can be enhanced with an additional display dedicated to the rearview camera as well as for a Multiview (360°) system. To complete the Cat Detect offerings, the machines can be equipped with a rear radar system, which features speed-sensitive alerts and ground clutter filtering to avoid annoyance.

### CAT COMMAND

---

Cat Command remote control enables equipment operators to work safely outside the machine when working in hazardous environments. Command offers the choice of handheld consoles\* (line-of-sight) or long-distance virtual stations (non-line-of-sight). Deep integration with machine systems enables efficiency and productivity by maintaining the use of in-cab technology\* features.

### COLLISION WARNING SYSTEM WITH MOTION INHIBIT AND PEOPLE DETECTION

---

The Collision Warning System with Motion Inhibit utilizes radar and vision sensors to detect hazard potentials, alert operators, and inhibit motion in the instant a machine transitions from an inactive to an active state while moving in the rearward direction. Audible and visual alerts can deliver the power to see, mitigate, and manage hazards that may otherwise go undetected to operators.

People Detection is an effective solution that utilizes both a smart camera and radar to alert the operator when a person is detected behind the machine. When machine is stationary for at least 15 seconds, and if the rear detection system detects something in the alarm zone, Motion Inhibit will prevent the machine from engaging reverse gear, helping to keep those who may be unexpectedly around the machine safe.



### CAT PAYLOAD\*\*

---

Cat Payload technology delivers precise bucket load information with on-the-go weighing, which helps prevent over- or underloading. The low lift weigh and manual tip-off functions optimize the final bucket process and maximize efficiency.

### CAT ADVANCED PAYLOAD

---

Advanced Payload is a system upgrade that offers expanded features and capabilities. Tip-off assist adds automation to the final bucket process. Multitask mode tracks two loading processes simultaneously. Split mode allows for loading multiple bodies while tracking individual targets and grand totals. Add Dispatch for Loading\*\*\* to integrate the loader into the scale house process. E-Ticketing allows an operator to generate a weighing ticket and effortlessly send it over the air to any email address.

### CAT PAYLOAD FOR TRADE\*\*\*\*

---

The Cat Payload for Trade option for Cat Advanced Payload allows you to integrate the scale data directly into your business processes. It is type approved by the International Organization of Legal Metrology, while retaining all the features of the standard version of Cat Advanced Payload.

\* Cat Command is not available in all regions or for all models. Please consult with your Cat dealer for machine compatibility and availability in your area.

\*\* Not legal for trade.

\*\*\* Subscription and compatible scale house software required.

\*\*\*\* Available in Europe. Country certifications vary. Contact your Cat dealer for more information.



# REAL-TIME INFORMATION FROM CAT EQUIPMENT MANAGEMENT TAKES THE GUESSWORK OUT OF MANAGING YOUR EQUIPMENT

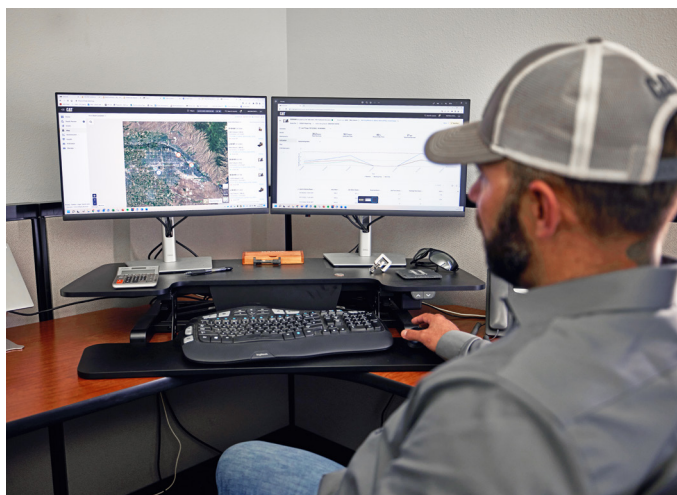
Cat Equipment Management technologies work together to put equipment information at your fingertips. Get real-time access to information on every machine in your fleet on any jobsite – no matter the size of the operation or the brands of equipment you run.



## VISIONLINK®

Gather and summarize machine telematics and jobsite data from all your equipment – regardless of the manufacturer.\* View actionable information such as idle time, fuel burn, location, payload, load counts, total cycles, and more to improve machine efficiency, productivity, and utilization. Access data anywhere via a mobile, tablet, or desktop device – on or off the jobsite.

\*Data field availability can vary by equipment manufacturer. VisionLink® subscription required. Availability may vary by region. Consult your Cat dealer for more details.



## CAT REMOTE SERVICES\*

A suite of technologies that improve your jobsite efficiency.

- + **Remote Troubleshoot** allows your Cat dealer to perform diagnostic testing on your connected machine remotely, pinpointing potential issues while the machine is in operation. Remote troubleshooting helps to ensure the technician arrives with the correct parts and tools the first time, eliminating additional trips, to save you time and money.
- + **Remote Flash** allows you to update onboard software without a technician being present, allowing you to initiate software updates when convenient, increasing your overall operating efficiency.
- + **Operator ID** requires operators to log in via Passcode or Bluetooth® (Cat Key Fob) at machine startup, helping to deter theft, vandalism, and unauthorized use. It saves settings from the last time an operator was logged in and maintains profiles that were retained during machine software flash updates. Operator IDs are easily managed through the touchscreen and can also be managed remotely and uploaded to the machine through Visionlink.

\*Must be within cell range coverage.



## CAT INSPECT

Cat Inspect is a mobile application that allows you to easily perform digital preventative maintenance checks, inspections, and daily walkarounds. The app includes machine-specific Preventive Maintenance (PM) checklists to perform service intervals as recommended in the Operation and Maintenance Manual. Inspections can easily be integrated with other Cat data systems like VisionLink®, so you can keep a close eye on your fleet.



# SUPERIOR FUEL EFFICIENCY



## ENGINE AND EMISSIONS

---

High power density and fuel efficiency set our engines apart. Certified to meet emission standards, our engines feature Cat electronics, fuel injection, and air-management systems.

## MACHINE SPEED LIMIT

---

Operators have the ability to regulate the machine's maximum speed, which conserves fuel by limiting runout speed in load and carry applications. Controlling the machine's speed also aids in adhering to safety regulations and best practices.

## ADVANCED SYSTEM INTEGRATION

---

Low fuel consumption is the result of advanced system integration of the engine and emissions system, powertrain, hydraulic system, and cooling system.

## POWER MODES

---

Operating the machine in the standard power mode will assure the best efficiency results in most applications. Using the available HP+ mode will not significantly increase the machine's digging capability but will allow higher speeds on grades in Load & Carry.

## PROVEN ENGINE SYSTEMS

---

The C9.3B utilizes technologies to deliver the lowest possible fluid consumption. Including proven common-rail fuel system and latest injector technology, Caterpillar patented designs enable removal of exhaust gas recirculation, while remaining total fluid consumption neutral.

## AFTERTREATMENT TECHNOLOGIES

---

The Cat Clean Emissions Module delivers the performance and efficiency that customers demand, while meeting emission standards. It is completely automatic and does not interrupt the machine's work cycle.



# WORK IN COMFORT

## IN THE SPACIOUS CAB

The cab is designed to enhance comfort and efficiency, providing a quiet, more expansive workspace with user-friendly controls to minimize fatigue, stress, noise, and heat during demanding tasks.



### CAB ACCESS

Inclined steps, large opening door, optional remote door opener, and convenient grab handles ease accessibility to the operating space.



### OPERATOR ID

Secure machine usage with dedicated Operator IDs. Machine settings are saved separately, increasing shift change efficiency. Unlock the machine using Passcode or optional Bluetooth key.



### GREAT VISIBILITY

Large, wide windows enhance visibility while convex and spot mirrors extend the driver's view on the sides and rear.



### COMFORTABLE WORK ENVIRONMENT

Spacious cab with significant legroom and easily adjustable seat and suspension. 4-point seat belt kit with retractors on the lap belt for added comfort, efficiency, and freedom of movement. A left footrest allows for added operator comfort, safety, and machine stability when working in uneven, bumpy operations.



### QUIET CAB

Sound-suppression, seals, and viscous cab mounts decrease noise for a quieter work environment.



### JOYSTICK STEERING

The seat-mounted electro-hydraulic joystick steering system provides precision control and dramatically reduces arm fatigue, resulting in excellent comfort and accuracy. A conventional HMU steering wheel is also available in many regions.

# SIMPLE CONTROLS

## AT YOUR FINGERTIPS

---

### TOUCHSCREEN DISPLAY

The easy and intuitive interface lets the operator work with confidence and efficiency. It includes Operator ID, machine settings, job aids, maintenance reminders, help functions, security, rearview camera, and integrated Cat Payload.



---

### CENTRAL DISPLAY

Featuring easy-to-read analog gauges and LED indicators that allow the operator to quickly monitor critical machine health parameters.

A large text box displays the Cat Payload information as well as gear selection, machine travel speed, time, and hour meter.



---

### KEYPADS

Easy-to-reach backlit keypads on the implement control pod and the A-post provide instant access to many functions and settings. Only active buttons or functions are illuminated, making it very intuitive for the operator.







# LOW MAINTENANCE COSTS

Cat wheel loaders are easy to maintain and service, eliminating any potential waste of time or money. Major components are rebuildable, giving the machine a second life and often a third life.

## KEY FEATURES SAVING YOU TIME, MONEY, AND ENERGY:

- + Tire Pressure Monitoring System allows operator to easily monitor tire pressure from the main machine display, helping to improve machine performance, operator ride, and operating costs.
- + Maintenance reminders help to synchronize machine maintenance schedule and reduce operation downtime.
- + Convenient access to hydraulic and electrical service centers for easy and safe servicing.
- + Remote Troubleshoot can connect the machine to the dealer service department to help diagnose problems quickly so you can get back to work.
- + Remote Flash works around your schedule to ensure your machine's software is up to date for optimal performance.
- + Integrated Autolube extends component and service life.
- + One-piece tilting hood makes engine compartment access fast and easy.

## THE CAT® 966 SAVES TIME AND MONEY WITH EASIER AND FASTER SERVICE



**REBUILDABLE  
COMPONENTS**



**EASY ACCESS  
TO SERVICE CENTERS**



**REMOTE TECHNOLOGIES  
MANAGE YOUR MACHINE FROM ANYWHERE**

# DO MORE JOBS

## VERSATILE ATTACHMENTS AND COUPLERS

For worksites that demand more, you need a wheel loader that is purpose-built for the job. Cat work tools are engineered to handle all of your specific application needs.



### STANDARD Z-BAR LINKAGE

The proven Z-bar linkage combines digging efficiency with sharp visibility, resulting in excellent excavation, high breakout forces, and superior production capabilities.

### QUICK COUPLERS AND WORK TOOL ATTACHMENTS

A wheel loader equipped with a Cat Fusion™ quick coupler system is a much more versatile machine. Buckets and work tools can be changed without leaving the cab – allowing the machine to quickly move from task to task. Consult your local dealer for availability of a variety of specialty buckets and forks.

### PERFORMANCE SERIES BUCKETS

Performance Series Buckets use a system-based approach to balance bucket shape with the machine's lift and tilt capacity, weight, and linkage. A variety of work tools and bucket styles are available for a range of applications, including general purpose, flat floor, heavy duty rock, and coal-style buckets.

- + Easy loading
- + Fuel efficient
- + Carry more
- + Lower operating costs
- + Higher productivity

### HIGH LIFT LINKAGE

The optional high lift linkage offers increased hinge pin height to load more easily in a variety of applications with any type of bucket or fork.

### PURPOSE-BUILT SPECIALTY CONFIGURATIONS

Maximize your wheel loader's performance and durability in the toughest applications with application-specific arrangements direct from the factory.

**Industrial and waste models** – guarding and reinforcement protect components when working in transfer stations, recycling depots, scrap yards, and demolition sites.

**Forestry model** – increases lift and tilt capacities for efficiency and productive log and chip handling in paper, pellet, and sawmills.



# TECHNICAL SPECIFICATIONS

See cat.com for complete specifications.

ENGINE		
Engine Model	Cat® C9.3B	
Engine Power @ 1,600 rpm – ISO 14396	239 kW	321 hp
ISO 14396 (DIN)	325 hp (metric)	
Gross Power @ 1,600 rpm – SAE J1995	242 kW	325 hp
Net Power @ 1,600 rpm – ISO 9249, SAE J1349	226 kW	303 hp
ISO 9249 (DIN)	307 hp (metric)	
Engine Torque @ 1,200 rpm – ISO 14396	1781 N·m	1,313 lbf·ft
Gross Torque @ 1,200 rpm – SAE J1995	1799 N·m	1,327 lbf·ft
Net Torque @ 1,200 rpm – ISO 9249, SAE J1349	1702 N·m	1,255 lbf·ft
Displacement	9.3 L	

- Cat engine meets U.S. EPA Tier 4 Final, EU Stage V, Korea Stage V, China Nonroad Stage IV and Japan 2014 emission standards.
- The net power advertised is the power available at the flywheel when the engine is equipped with fan, alternator, air cleaner, and aftertreatment.
- Advertised power is tested per the specified standard in effect at the time of manufacture.
- Cat diesel engines are required to use ULSD (ultra-low sulfur diesel fuel with 15 ppm of sulfur or less) and are compatible\* with ULSD blended with the following lower-carbon intensity fuels\*\* up to:
  - 20% biodiesel FAME (fatty acid methyl ester)\*\*\*
  - 100% renewable diesel, HVO (hydrogenated vegetable oil) and GTL (gas-to-liquid) fuels
 Refer to guidelines for successful application. Please consult your Cat dealer or "Caterpillar Machine Fluids Recommendations" (SEBU6250) for details.  
*\* While Caterpillar engines are compatible with these alternative fuels, some regions may not allow their use.*  
*\*\* Tailpipe greenhouse gas emissions from lower-carbon intensity fuels are essentially the same as traditional fuels.*  
*\*\*\* Engines with no aftertreatment devices are compatible with higher blends, up to 100% biodiesel (for use of blends higher than 20% biodiesel, consult your Cat dealer).*

WEIGHT		
Operating Weight	23 196 kg	51,124 lb

- Weight based on a machine configuration with Bridgestone 26.5R25 VJT L3 radial tires, full fluids, operator, standard counterweight, ride control, cold start, roading fenders, Product Link™, front manual differential/open rear axles, powertrain guard, secondary steering, sound suppression, and a 4.2 m³ (5.5 yd³) general purpose bucket with BOCE.

BUCKET CAPACITIES		
Bucket Range	2.8-11.9 m³	3.75-15.5 yd³

TRANSMISSION					
Forward 1	6.7 km/h	4.2 mph	Reverse 1	7.3 km/h	4.5 mph
Forward 2	13.5 km/h	8.4 mph	Reverse 2	14.8 km/h	9.2 mph
Forward 3	24.2 km/h	15.0 mph	Reverse 3	26.6 km/h	16.5 mph
Forward 4	39.5 km/h	24.5 mph	Reverse 4	39.5 km/h	24.5 mph

- Maximum travel speed in standard vehicle with empty bucket and standard L3 tires with 849 mm (33 in) roll radius.

SOUND	
Operator Sound Pressure Level (ISO 6396:2008)	70 dB(A)
Exterior Sound Power Level (ISO 6395:2008)	109 dB(A)
Operator Sound Pressure Level (ISO 6396:2008)*	69 dB(A)
Exterior Sound Power Level (ISO 6395:2008)**	108 dB(A)

\*Including countries that adopt the EU and UK Directives

\*\*EU Noise Directive 2000/14/EC and UK Noise Regulation 2001 No. 1701

OPERATING SPECIFICATIONS			
Static Tipping Load – Full 37° Turn – with Tire Deflection	14 849 kg	32,727 lb	
Static Tipping Load – Full 37° Turn – No Tire Deflection	15 981 kg	35,224 lb	
Breakout Force	174 kN	38,999 lbf	

- For a machine configuration as defined under "Weight."
- Full compliance to ISO 14397-1:2007 Sections 1 thru 6, which requires 2% verification between calculations and testing.

SERVICE REFILL CAPACITIES		
Fuel Tank	303 L	80.1 gal
Diesel exhaust fluid (DEF)	26 L	6.9 gal
Cooling System	66 L	17.4 gal
Crankcase	23 L	6.1 gal
Transmission	58.5 L	15.5 gal
Differentials and Final Drives – Front	57 L	15.1 gal
Differentials and Final Drives – Rear	57 L	15.1 gal
Hydraulic Tank	114 L	30.1 gal

HYDRAULIC SYSTEM		
Implement System:		
Maximum Pump Output (2,275 rpm)	373 L/min	99 gal/min
Maximum Operating Pressure	31 000 kPa	4,496 psi
Hydraulic Cycle Time – Total	10.1 seconds	

DIMENSIONS				
	Standard Lift		High Lift	
Height to Top of Hood	2850 mm	9'5"	2850 mm	9'5"
Height to Top of Exhaust Pipe	3531 mm	11'8"	3531 mm	11'8"
Height to Top of ROPS	3593 mm	11'10"	3593 mm	11'10"
Ground Clearance	424 mm	1'4"	424 mm	1'4"
Center Line of Rear Axle to Edge of Counterweight	2290 mm	7'7"	2458 mm	8'1"
Center Line of Rear Axle to Hitch	1775 mm	5'10"	1775 mm	5'10"
Wheelbase	3550 mm	11'8"	3550 mm	11'8"
Overall Length (without bucket)	7399 mm	24'4"	8069 mm	26'6"
Hinge Pin Height at Maximum Lift	4245 mm	13'11"	4804 mm	15'9"
Hinge Pin Height at Carry	635 mm	2'0"	782 mm	2'6"
Lift Arm Clearance at Maximum Lift	3687 mm	12'1"	4183 mm	13'8"
Rack Back at Maximum Lift	62 degrees		71 degrees	
Rack Back at Carry Height	50 degrees		49 degrees	
Rack Back at Ground	39 degrees		37 degrees	
Width over Tires (Loaded)	3012 mm	9'11"	3012 mm	9'11"
Tread Width	2230 mm	7'3"	2230 mm	7'3"

- All dimensions are approximate and based on machine equipped with 4.2 m³ (5.5 yd³) general purpose bucket with BOCE and Bridgestone 26.5R25 VJT L3 radial tires.

AIR CONDITIONING SYSTEM	
The air conditioning system on this machine contains the fluorinated greenhouse gas refrigerant R134a (Global Warming Potential = 1430). If equipped, the system contains 1.6 kg (3.5 lb) of refrigerant, which has a CO <sub>2</sub> equivalent 2.288 metric tonnes (2.522 tons).	

# STANDARD & OPTIONAL EQUIPMENT

Standard and optional equipment may vary. Consult your Cat® dealer for details.

OPERATOR ENVIRONMENT	STANDARD	OPTIONAL
Cab, pressurized, sound suppression	•	
Door, remote opening system		•
EH implement controls, parking brake	•	
Footrest		•
HMU steering wheel		•
Steering, joystick	•	
Implement joystick (2V, 3V only)		•
Radio, (FM, AM, USB, BT, DAB+)		•
CB radio ready		•
Seat belt, monitored	•	
Seat, cloth, air suspension	•	
Seat, suede/cloth, air suspension, heated		•
Seat, leather/cloth, air suspension, heated/ventilated		•
Keypad, programmable buttons	•	
Mirrors, heated		•
Air conditioner, heater, defroster	•	
Sun visor, front/rear, retractable	•	
Windows, front, laminated	•	
Full cab window guard		•
ON-BOARD TECHNOLOGIES	STANDARD	OPTIONAL
Autodig with Auto Set Tires	•	
Operator ID & machine security	•	
Application Profiles	•	
Job Aids	•	
Controls Help and eOMM*	•	
Cat® Payload scale	•	
Cat Advanced Payload		•
Cat Payload for Trade*****		•
Cat Payload Printer with E-ticket		•
Key Features Inform	•	
Bucket Carry Display Widget	•	
Remote Flash	•	
HYDRAULICS	STANDARD	OPTIONAL
Implement system, load sensing with variable displacement piston pump	•	
Steering system, load sensing with dedicated variable displacement piston pump	•	
Ride control, dual accumulators	•	
3rd and 4th auxiliary functions		•
Quick coupler control		•
ELECTRICAL	STANDARD	OPTIONAL
Starting and charging system, 24V	•	
Cold start, 120V or 240V		•
Lights: halogen	•	
Lights: LED		•

POWERTRAIN	STANDARD	OPTIONAL
Cat C9.3B engine	•	
Electric fuel priming pump	•	
Turbine, air precleaner		•
Radiator, high debris		•
Cooling fan, reversible		•
Axles, auto front differential lock	•	
Axles, auto front and rear differential locks		•
Axles, ecology drains, AOC ready, extreme temperature seals		•
Axles, oil cooler		•
Transmission, planetary, automatic powershift	•	
Torque converter with lock-up	•	
Service brakes, hydraulic, fully enclosed wet disc, wear indicators	•	
Integrated Braking System (IBS)	•	
Park brake, caliper on front axles, spring applied-pressure released	•	
Brake pedal neutralizer with decel function	•	
MONITORING SYSTEM	STANDARD	OPTIONAL
Front dash with analog gauges, LCD display, and warning lights	•	
Primary touchscreen monitor	•	
Tire Pressure Monitor		•
Maintenance Reminders	•	
LINKAGE	STANDARD	OPTIONAL
Standard lift, Z-bar	•	
High lift, Z-bar		•
Kickouts: lift and tilt	•	
ADDITIONAL EQUIPMENT	STANDARD	OPTIONAL
Cat Autolube system		•
Fenders, extensions or roading		•
Biodegradable hydraulic oil		•
SAFETY	STANDARD	OPTIONAL
Cat Detect rear radar system		•
Multiview (360°) vision system		•
Window cleaning platform, front	•	
4-Point seat belt with retractors (kit)		•
Reversing strobe lights***		•
Secondary steering system, electrical**		•
Warning beacon		•
Collision Warning System with Motion Inhibit and People Detection		•
Remote Control		•
SPECIAL CONFIGURATIONS	STANDARD	OPTIONAL
Aggregate handler		•
Waste and industrial		•
Forestry		•
Tunneling****		•
Corrosion resistant		•

\* Not available in all languages

\*\* Standard where mandated

\*\*\* Not Compatible with roading arrangements

\*\*\*\* Japan only

\*\*\*\*\* Available in Europe. Country certifications vary. Contact your Cat dealer for more information.





オフロード法2014年  
基準適合

For more complete information on Cat products, dealer services and industry solutions, visit us on the web at [www.cat.com](http://www.cat.com)

Materials and specifications are subject to change without notice. Featured machines in photos may include additional equipment. See your Cat dealer for available options.

© 2025 Caterpillar. All Rights Reserved. CAT, CATERPILLAR, LET'S DO THE WORK, VisionLink, their respective logos, Fusion, XT, Product Link, HEUI, "Caterpillar Corporate Yellow", the "Power Edge" and Cat "Modern Hex" trade dress as well as corporate and product identity used herein, are trademarks of Caterpillar and may not be used without permission.

[www.cat.com](http://www.cat.com) [www.caterpillar.com](http://www.caterpillar.com)

AEXQ3314-02 (05-2025)  
Replaces AEXQ3314-01  
Build Number: 14B  
(N Am, Europe, Japan, China, India,  
Korea, Türkiye, Chile, Colombia)

