



# 352

## Hydraulic Excavator

# Technical Specifications

Configurations and features may vary by region. Please consult your Cat® dealer for availability in your area.

### Table of Contents

<b>Specifications</b> .....	<b>2</b>
Engine .....	2
Swing Mechanism .....	2
Weights .....	2
Track .....	2
Drive .....	2
Hydraulic System .....	2
Service Refill Capacities .....	2
Standards .....	2
Sound Performance .....	2
Air Conditioning System .....	2
Operating Weights and Ground Pressures .....	3
Major Component Weights .....	3
Dimensions .....	4
Working Ranges and Forces .....	6
Bucket Specifications and Compatibility .....	8
Attachments Offering Guide .....	9
<b>Standard and Optional Equipment</b> .....	<b>10</b>
<b>Cab Options</b> .....	<b>11</b>
<b>Dealer Installed Kit and Attachments</b> .....	<b>12</b>

# 352 Hydraulic Excavator Specifications

## Engine

Engine Model	C13	
Net Power – ISO 9249	302 kW	405 hp
Engine Power – ISO 14396	303 kW	406 hp
Bore	130 mm	5 in
Stroke	157 mm	6 in
Displacement	12.5 L	763 in <sup>3</sup>
Biodiesel Capability	Up to B20 <sup>(1)</sup>	

- Meets China Nonroad Stage III emission standards, equivalent to U.S. EPA Tier 3/EU Stage IIIA.
- Recommended for use up to 4500 m (14,760 ft) altitude with engine power derate above 3000 m (9,834 ft).
- Net power advertised is the power available at the flywheel when the engine is equipped with fan, air cleaner, muffler, and alternator.
- Rated speed at 1,800 rpm.

<sup>(1)</sup>Cat® engines are compatible with the following renewable, alternative, and bio-fuels\* with lower greenhouse gas emission impact:

- ✓ Up to B20 biodiesel (FAME)\*\*
- ✓ Up to 100% HVO and GTL renewable fuels

\*Refer to guidelines for successful application. Please consult your Cat dealer or “Caterpillar Machine Fluids Recommendations” (SEBU6250) for details.

\*\*B30, where mandated, can be used. For use of higher blends, up to B100, consult your Cat dealer.

## Swing Mechanism

Swing Speed	8.3 rpm	
Maximum Swing Torque	189 kN·m	139,000 lbf·ft

## Weights

Including common components: Fixed Gauge (FG) long undercarriage and 9.8 mt (21,605 lb) counterweight

Operating Weight	49 900 kg	110,000 lb
------------------	-----------	------------

- Mass boom, HD M3.0UB (9'10") stick, SD 3.21 m<sup>3</sup> (4.20 yd<sup>3</sup>) bucket, and 600 mm (24") double grouser shoes.

## Track

Optional Track Shoes Width – FG	750 mm	30 in
Standard Track Shoes Width – FG	600 mm	24 in
Number of Shoes (each side)	52	
Number of Track Rollers (each side)	9	
Number of Carrier Rollers (each side)	2	

## Drive

Maximum Gradeability	35°/70%	
Maximum Travel Speed	4.5 km/h	2.8 mph
Maximum Drawbar Pull	351 kN	78,908 lbf

## Hydraulic System

Main System – Maximum Flow (Implement)	779 L/min (389 × 2 pumps)	206 gal/min (103 × 2 pumps)
Maximum Pressure – Equipment – Implement	35 000 kPa	5,076 psi
Maximum Pressure – Equipment – Lift Mode	38 000 kPa	5,511 psi
Maximum Pressure – Travel	35 000 kPa	5,076 psi
Maximum Pressure – Swing	26 000 kPa	3,771 psi
Boom Cylinder – Bore	170 mm	7 in
Boom Cylinder – Stroke	1524 mm	60 in
Stick Cylinder – Bore	190 mm	7 in
Stick Cylinder – Stroke	1758 mm	69 in
TB Bucket Cylinder – Bore	160 mm	6 in
TB Bucket Cylinder – Stroke	1356 mm	53 in
UB Bucket Cylinder – Bore	170 mm	7 in
UB Bucket Cylinder – Stroke	1396 mm	55 in

## Service Refill Capacities

Fuel Tank Capacity	715 L	188.9 gal
Cooling System	52 L	13.7 gal
Engine Oil (with filter)	40 L	10.6 gal
Swing Drive	10.5 L	2.8 gal
Final Drive (each)	9.5 L	2.5 gal
Hydraulic System (including tank)	550 L	145.3 gal
Hydraulic Tank (including suction pipe)	217 L	57.3 gal

## Standards

Brakes	ISO 10265:2008
Cab/FOGS	ISO 10262:1998
Cab/ROPS	ISO 12117-2:2008

## Sound Performance

ISO 6395 (external)	107 dB(A)
ISO 6396 (inside cab)	75 dB(A)

- When properly installed and maintained, the cab offered by Caterpillar, when tested with doors and windows closed according to ANSI/SAE J1166 OCT98, meets OSHA and MSHA requirements for operator sound exposure limits in effect at time of manufacture.
- Hearing protection may be needed when operating with an open operator station and cab (when not properly maintained or doors/windows open) for extended periods or in a noisy environment.

## Air Conditioning System

The air conditioning system on this machine contains the fluorinated greenhouse gas refrigerant R134a (Global Warming Potential = 1430). The system contains 1.00 kg of refrigerant which has a CO<sub>2</sub> equivalent of 1430 metric tonne.

# 352 Hydraulic Excavator Specifications

## Operating Weights and Ground Pressures

Base Machine Configurations	600 mm (24") Double Grouser Shoes		750 mm (30") Triple Grouser Shoes		750 mm (30") Double Grouser Shoes – FG only	
	Weight	Ground Pressure	Weight	Ground Pressure	Weight	Ground Pressure
	kg (lb)	kPa (psi)	kg (lb)	kPa (psi)	kg (lb)	kPa (psi)
<b>Base Frame with Single Flange Track Rollers and Carrier Rollers</b>						
<b>9.8 mt (21,605 lb) Counterweight</b>						
Reach Boom + HD R3.35 m (11'0") TB Stick + 3.00 m <sup>3</sup> (3.92 yd <sup>3</sup> ) SD Bucket	49 100 (108,200)	85.0 (12.3)	49 700 (109,600)	69.0 (10.0)	49 900 (109,900)	69.1 (10.0)
Reach Boom + HD R2.9 m (9'6") TB Stick + 3.00 m <sup>3</sup> (3.92 yd <sup>3</sup> ) SD Bucket	48 800 (107,600)	84.6 (12.3)	49 500 (109,100)	68.7 (10.0)	49 600 (109,400)	68.7 (10.0)
Mass Boom + HD M3.0 m (9'1") UB Stick + 3.40 m <sup>3</sup> (4.45 yd <sup>3</sup> ) SD Bucket	49 900 (110,000)	86.4 (12.5)	50 500 (111,400)	70.1 (10.2)	50 700 (111,700)	70.2 (10.2)
Mass Boom + HD M2.5 m (8'2") UB Stick + 3.40 m <sup>3</sup> (4.45 yd <sup>3</sup> ) SD Bucket	49 700 (109,500)	86.0 (12.5)	50 300 (110,900)	69.8 (10.1)	50 500 (111,200)	69.9 (10.1)

All operating weights include a 90% fuel tank with 75 kg (165 lb) operator.

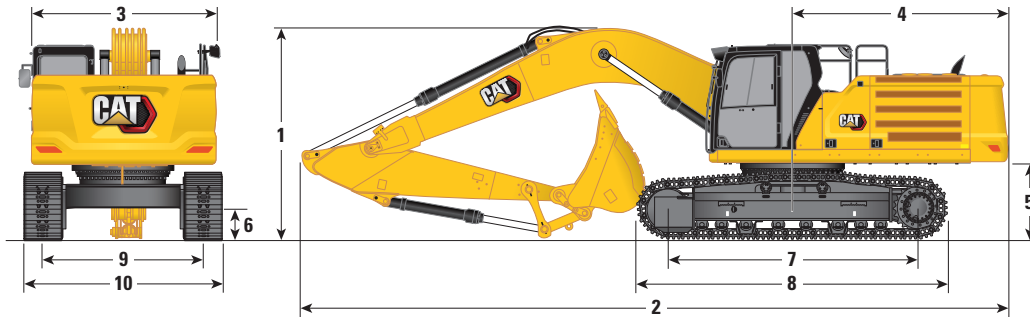
## Major Component Weights

	kg	lb
Base Machine Weight:		
9.8 mt (21,605 lb) Counterweight, Standard Swing Frame, Base Frame with SF Track Rollers and Carrier Rollers for Undercarriage	32 750	72,210
Track Shoes:		
600 mm (24") Width, Double Grouser Track Shoes	5400	11,900
750 mm (30") Width, Triple Grouser Track Shoes	6040	13,320
750 mm (30") Width, Double Grouser Track Shoes	6190	13,650
Two Boom Cylinders	920	2,020
Weight of 90% Fuel Tank and 75 kg (165 lb) Operator	630	1,380
Counterweight:		
9.8 mt (21,605 lb) Counterweight	9800	21,610
Swing Frame:		
Standard Swing Frame	4290	9,450
Base Frame with SF Track Rollers and Carrier Rollers	10 740	23,670
Booms (including lines, pins, stick cylinder):		
Reach Boom 6.9 m (22'8")	4490	9,910
Mass Boom 6.55 m (21'6")	4780	10,540
Sticks (including lines, pins, bucket cylinder, bucket linkage):		
Reach Stick R3.35TB (11'0")	2540	5,610
Reach Stick R2.9TB (9'6")	2460	5,420
Mass Stick M3.0UB (9'10")	3000	6,610
Mass Stick M2.5UB (8'2")	2820	6,210
Buckets (without linkage):		
For Reach – 3.00 m <sup>3</sup> (3.92 yd <sup>3</sup> ) SD Extreme for TB	2870	6,320
For Mass – 3.40 m <sup>3</sup> (4.45 yd <sup>3</sup> ) SD for UB	3290	7,260

# 352 Hydraulic Excavator Specifications

## Dimensions

All dimensions are approximate and may vary depending on bucket selection.



Boom Options Stick Options	Reach Boom 6.9 m (22'8")				Mass Boom 6.55 m (21'6")			
	Reach Stick				Mass Stick			
	R3.35TB (11'0")		R2.9TB (9'6")		M3.0UB (9'10")		M2.5UB (8'2")*	
	mm	ft/in	mm	ft/in	mm	ft/in	mm	ft/in
<b>1</b> Machine Height:								
Cab Height	3230	10'7"	3230	10'7"	3230	10'7"	3230	10'7"
FOGS Height	3370	11'1"	3370	11'1"	3370	11'1"	3370	11'1"
Guardrails/Handrails Height	3370	11'1"	3370	11'1"	3370	11'1"	3370	11'1"
With Boom/Stick/Bucket Installed	3580	11'9"	3680	12'1"	4040	13'3"	4000	13'1"
With Boom/Stick Installed	3580	11'9"	3500	11'6"	3820	12'6"	3780	12'5"
With Boom Installed	3100	10'2"	3100	10'2"	3180	10'5"	3180	10'5"
With Boom/Stick/Bucket Installed (with auxiliary lines)	3590	11'9"	3680	12'1"	4040	13'3"	4000	13'1"
With Boom/Stick Installed (with auxiliary lines)	3590	11'9"	3520	11'7"	3780	12'5"	3780	12'5"
With Boom Installed (with auxiliary lines)	3130	10'3"	3130	10'3"	3200	10'6"	3200	10'6"
<b>2</b> Machine Length:								
With Boom/Stick/Bucket Installed	11 870	38'11"	11 890	39'0"	11 580	38'0"	11 660	38'3"
With Boom/Stick Installed	11 870	38'11"	11 850	38'11"	11 530	37'10"	11 590	38'0"
With Boom Installed	10 640	34'11"	10 640	34'11"	10 280	33'9"	10 280	33'9"
With Boom/Stick/Bucket Installed (with auxiliary lines)	11 870	38'11"	11 890	39'0"	11 580	38'0"	11 660	38'3"
With Boom/Stick Installed (with auxiliary lines)	11 870	38'11"	11 850	38'11"	11 530	37'10"	11 590	38'0"
With Boom Installed (with auxiliary lines)	10 640	34'11"	10 640	34'11"	10 280	33'9"	10 280	33'9"
<b>3</b> Upperframe Width without Walkways	3020	9'11"	3020	9'11"	3020	9'11"	3020	9'11"
<b>4</b> Tail Swing Radius	3760	12'4"	3760	12'4"	3760	12'4"	3760	12'4"
<b>5</b> Counterweight Clearance (without shoe lug)	1280	4'2"	1280	4'2"	1280	4'2"	1280	4'2"
<b>6</b> Ground Clearance (without shoe lug)	475	1'7"	475	1'7"	475	1'7"	475	1'7"
<b>7</b> Length to Center of Rollers	4360	14'4"	4360	14'4"	4360	14'4"	4360	14'4"
Bucket Type	SD-E		SD-E		SD		SD	
Bucket Capacity	3.00 m <sup>3</sup>	3.92 yd <sup>3</sup>	3.00 m <sup>3</sup>	3.92 yd <sup>3</sup>	3.21 m <sup>3</sup>	4.20 yd <sup>3</sup>	3.21 m <sup>3</sup>	4.20 yd <sup>3</sup>
Bucket Tip Radius	1919 mm	6'4"	1919 mm	6'4"	2086 mm	6'10"	2086 mm	6'10"

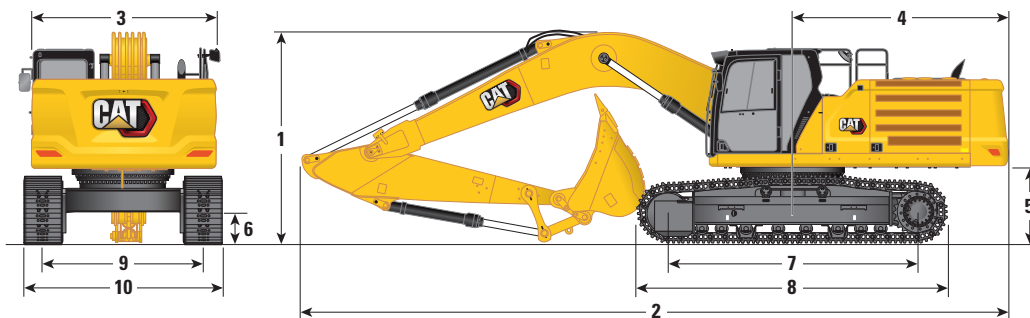
\*Not offered in Hong Kong and Taiwan

(continued on next page)

# 352 Hydraulic Excavator Specifications

## Dimensions *(continued)*

All dimensions are approximate and may vary depending on bucket selection.



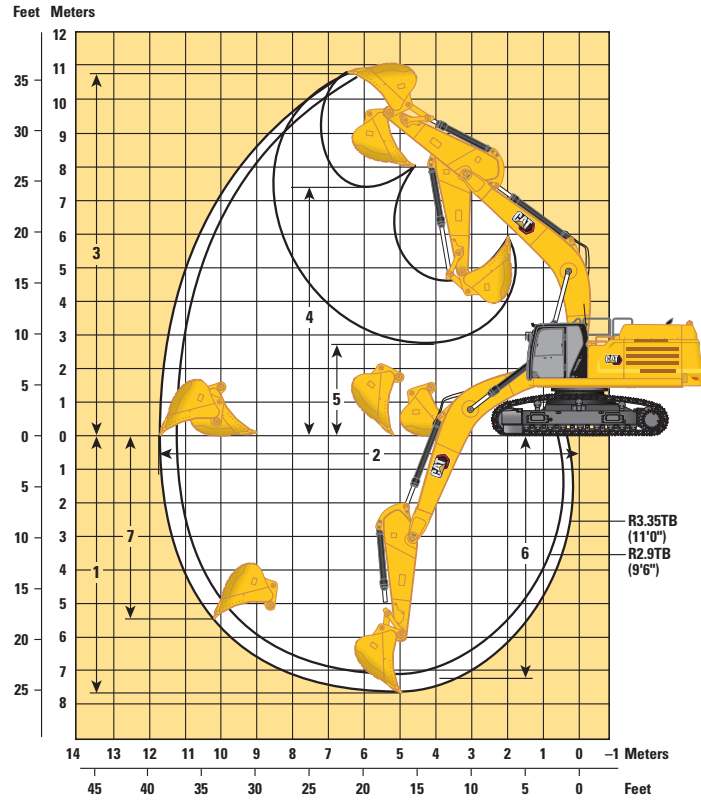
Boom Options	Reach Boom 6.9 m (22'8")				Mass Boom 6.55 m (21'6")			
	Stick Options				Stick Options			
	Reach Stick				Mass Stick			
	R3.35TB (11'0")		R2.9TB (9'6")		M3.0UB (9'10")		M2.5UB (8'2")*	
	mm	ft/in	mm	ft/in	mm	ft/in	mm	ft/in
<b>8</b> Track Length with Triple Grouser Shoes	5370	17'7"	5370	17'7"	5370	17'7"	5370	17'7"
<b>9</b> Track Gauge	2740	9'0"	2740	9'0"	2740	9'0"	2740	9'0"
Track Width:								
600 mm (24") Shoes	3340	10'11"	3340	10'11"	3340	10'11"	3340	10'11"
750 mm (30") Shoes	3490	11'5"	3490	11'5"	3490	11'5"	3490	11'5"
900 mm (35") Shoes	3640	11'11"	3640	11'11"	3640	11'11"	3640	11'11"
<b>10</b> Undercarriage Width (with steps)								
600 mm (24") Shoes	3530	11'7"	3530	11'7"	3530	11'7"	3530	11'7"
750 mm (30") Shoes	3530	11'7"	3530	11'7"	3530	11'7"	3530	11'7"
900 mm (35") Shoes	3640	11'11"	3640	11'11"	3640	11'11"	3640	11'11"
Bucket Type	SD-E		SD-E		SD		SD	
Bucket Capacity	3.00 m <sup>3</sup>	3.92 yd <sup>3</sup>	3.00 m <sup>3</sup>	3.92 yd <sup>3</sup>	3.21 m <sup>3</sup>	4.20 yd <sup>3</sup>	3.21 m <sup>3</sup>	4.20 yd <sup>3</sup>
Bucket Tip Radius	1919 mm	6'4"	1919 mm	6'4"	2086 mm	6'10"	2086 mm	6'10"

\*Not offered in Hong Kong and Taiwan

# 352 Hydraulic Excavator Specifications

## Working Ranges and Forces

All dimensions are approximate and may vary depending on bucket selection.



### Boom Option

**Reach Boom**  
6.9 m (22'8")

### Stick Options

**Reach Stick**

#### R3.35TB (11'0")

#### R2.9TB (9'6")

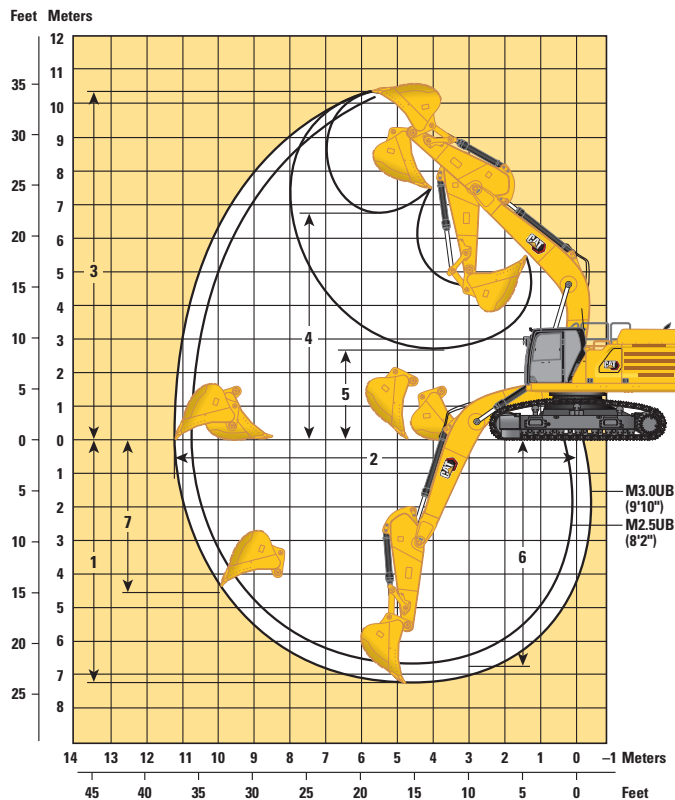
	R3.35TB (11'0")		R2.9TB (9'6")	
<b>1</b> Maximum Digging Depth	7690 mm	25'3"	7240 mm	23'9"
<b>2</b> Maximum Reach at Ground Line	11 760 mm	38'7"	11 340 mm	37'2"
<b>3</b> Maximum Cutting Height	10 740 mm	35'3"	10 560 mm	34'8"
<b>4</b> Maximum Loading Height	7400 mm	24'3"	7220 mm	23'8"
<b>5</b> Minimum Loading Height	2720 mm	8'11"	3170 mm	10'5"
<b>6</b> Maximum Depth Cut for 2440 mm (8'0") Level Bottom	7240 mm	23'9"	6790 mm	22'3"
<b>7</b> Maximum Vertical Wall Digging Depth	5460 mm	17'11"	5050 mm	16'7"
Bucket Digging Force (ISO)	266 kN	59,800 lbf	266 kN	59,800 lbf
Stick Digging Force (ISO)	200 kN	45,000 lbf	220 kN	49,500 lbf
Bucket Type	SD-E		SD-E	
Bucket Capacity	3.00 m <sup>3</sup>	3.92 yd <sup>3</sup>	3.00 m <sup>3</sup>	3.92 yd <sup>3</sup>
Bucket Tip Radius	1917 mm	6'3"	1917 mm	6'3"

(continued on next page)

# 352 Hydraulic Excavator Specifications

## Working Ranges and Forces (continued)

All dimensions are approximate and may vary depending on bucket selection.



### Boom Options

**Mass Boom**  
6.55 m (21'6")

### Stick Options

**Mass Stick**

	M3.0UB (9'10")		M2.5UB (8'2")	
	mm	ft/in	mm	ft/in
<b>1</b> Maximum Digging Depth	7270	23'10"	6770	22'3"
<b>2</b> Maximum Reach at Ground Line	11 240	36'11"	10 770	35'4"
<b>3</b> Maximum Cutting Height	10 290	33'9"	10 090	33'1"
<b>4</b> Maximum Loading Height	6780	22'3"	6580	21'7"
<b>5</b> Minimum Loading Height	2610	8'7"	3110	10'2"
<b>6</b> Maximum Depth Cut for 2440 mm (8'0") Level Bottom	6790	22'3"	6290	20'8"
<b>7</b> Maximum Vertical Wall Digging Depth	4540	14'11"	4110	13'6"
Bucket Digging Force (ISO)	293 kN	65,900 lbf	293 kN	65,900 lbf
Stick Digging Force (ISO)	212 kN	47,700 lbf	240 kN	54,000 lbf
Bucket Type	SD		SD	
Bucket Capacity	3.21 m <sup>3</sup>	4.20 yd <sup>3</sup>	3.21 m <sup>3</sup>	4.20 yd <sup>3</sup>
Bucket Tip Radius	2086 mm	6'10"	2086 mm	6'10"

# 352 Hydraulic Excavator Specifications

## Bucket Specifications and Compatibility

										9.8 mt (21,605 lb) Counterweight						
		mm	in	m <sup>3</sup>	yd <sup>3</sup>	kg	lb	%	6.9 m (22'8") Reach HD		6.55 m (21'6") Mass HD					
									R2.9HD (9'6")	R3.35HD (11'0")	M2.5HD (8'2")	M3.0HD (9'10")				
<b>Pin-On (No Quick Coupler)</b>																
Severe Duty	TB	1900	75	2.80	3.66	2756	6,075	90	⊙	⊖						
Severe Duty	TB	2050	81	3.00	3.92	2760	6,084	90	⊙	⊖						
Heavy Duty	UB	2050	81	3.60	4.71	2968	6,542	100			○	○				
Severe Duty Extreme	UB	1650	65	2.70	3.53	3023	6,665	90			●	⊙				
Severe Duty	UB	1850	73	3.21	4.20	2929	6,456	90			⊙	⊖				
Severe Duty	UB	1950	77	3.40	4.45	3027	6,673	90			⊖	○				
Maximum load with pin-on (payload + bucket)									kg	7420	6760	8060	7270			
									lb	16,358	14,903	17,769	16,028			
<b>With Cat Pin Grabber Coupler</b>																
Severe Duty	TB	1900	75	2.80	3.66	2756	6,075	90	○	◇						
	TB	2050	81	3.00	3.92	2760	6,084	90	○	◇						
Maximum load with coupler (payload + bucket)									kg	6367	5707	7007	6217			
									lb	14,036	12,581	15,447	13,706			
<b>With CW Coupler</b>																
Heavy Duty	UB	2050	81	3.60	4.71	2968	6,542	100			○	◇				
Severe Duty Extreme	UB	1650	65	2.70	3.53	3023	6,665	100			⊖	○				
Severe Duty	UB	1850	73	3.21	4.20	2929	6,456	100			○	◇				
Severe Duty	UB	1950	77	3.40	4.45	3027	6,673	100			○	◇				
Maximum load with coupler (payload + bucket)									kg	6601	5941	7241	6451			
									lb	14,553	13,098	15,964	14,222			

The above loads are in compliance with hydraulic excavator standard EN474-5:2006 + A3:2013, they do not exceed 87% of hydraulic lifting capacity or 75% of tipping capacity with front linkage fully extended at ground line with bucket curled. Capacity based on ISO 7451:2007.

Bucket weight with General Duty tips.

### Maximum Material Density:

- 2100 kg/m<sup>3</sup> (3,500 lb/yd<sup>3</sup>)
- ⊙ 1800 kg/m<sup>3</sup> (3,000 lb/yd<sup>3</sup>)
- ⊖ 1500 kg/m<sup>3</sup> (2,500 lb/yd<sup>3</sup>)
- 1200 kg/m<sup>3</sup> (2,000 lb/yd<sup>3</sup>)
- ◇ 900 kg/m<sup>3</sup> (1,500 lb/yd<sup>3</sup>)

Caterpillar recommends using appropriate work tools to maximize the value customers receive from our products. Use of work tools, including buckets, which are outside of Caterpillar's recommendations or specifications for weight, dimensions, flows, pressures, etc. may result in less-than-optimal performance, including but not limited to reductions in production, stability, reliability, and component durability. Improper use of a work tool resulting in sweeping, prying, twisting and/or catching of heavy loads will reduce the life of the boom and stick.



# 352 Hydraulic Excavator Specifications

## Attachments Offering Guide

Not all Attachments are available in all regions. Consult your Cat dealer for configurations available in your region.

Match

\* Working range front only

### PIN-ON ATTACHMENTS

Counterweight		9.8 mt (21,605 lb)			
		Reach HD		ME HD	
Boom Type		2.90 m HD (9'6")	3.35 m HD (11'0")	2.50 m HD (8'2")	3.00 m HD (9'10")
Stick Length					
Hydraulic Hammers	H180 GC	✓	✓	✓	✓
	H180 GC S	✓	✓	✓	✓
	H190 S	✓	✓	✓	✓
	H200 Side-mount	✓	✓*	✓	✓

# 352 Standard and Optional Equipment

## Standard and Optional Equipment

Standard and optional equipment may vary. Consult your Cat dealer for details.

	Standard	Optional		Standard	Optional
<b>BOOMS, STICKS AND LINKAGES</b>			<b>SAFETY AND SECURITY</b>		
6.55 m (21'6") Mass boom		✓	Caterpillar One Key security system	✓	
6.9 m (22'8") Reach boom		✓	Lockable external tool/storage box	✓	
3.9 m (12'10") Reach stick		✓	Lockable door, fuel, and hydraulic tank locks	✓	
2.5 m (8'2") Mass stick		✓	Lockable fuel drain compartment	✓	
2.9 m (9'6") Reach stick		✓	Service platform with anti-skid plate and recessed bolts	✓	
3.0 m (9'10") Mass stick		✓	RH handrail and handhold	✓	
3.35 m (11'0") Reach stick		✓	Signaling/warning horn	✓	
TB family bucket linkage without lifting eye		✓	Ground-level secondary engine shutoff switch	✓	
UB family bucket linkage without lifting eye		✓	Boom lowering check valve		✓
<b>CAT TECHNOLOGY</b>			Stick lowering check valve		✓
Cat Product Link™	✓		Rear and right-hand-sideview cameras	✓	
Remote Flash	✓		360° visibility		✓
Remote Troubleshoot	✓		Falling object guard system		✓
<b>ELECTRICAL SYSTEM</b>			<b>SERVICE AND MAINTENANCE</b>		
Maintenance-free 1,000 CCA batteries (x4)	✓		Grouped engine oil and fuel filters	✓	
Centralized electrical disconnect switch	✓		Scheduled Oil Sampling (S·O·S <sup>SM</sup> ) ports	✓	
LED exterior chassis and boom lights	✓		<b>UNDERCARRIAGE AND STRUCTURES</b>		
Premium surround working lights		✓	Towing eye on base frame	✓	
<b>ENGINE</b>			Full-length track guiding guards		✓
4500 m (14,764 ft) altitude capability	✓		Segmented three-piece track guiding guards		✓
115 Amp alternator	✓		Swivel guard	✓	
Cold start block heaters		✓	HD bottom guard	✓	
Three selectable modes: Power, Smart, Eco	✓		HD travel motor guards	✓	
Auto engine speed control	✓		HD rollers		✓
52° C (126° F) high-ambient cooling		✓	Grease lubricated track	✓	
Hydraulic reverse fan		✓	HD swing frame	✓	
-18° C (0° F) cold start capability	✓		HD swing bearing	✓	
-32° C (-25° F) cold start capability		✓	9.8 mt (21,605 lb) counterweight		✓
Double element air filter with integrated pre-cleaner	✓		600 mm (24") double grouser track shoes		✓
Dual stage four micron main filter	✓		750 mm (30") double grouser track shoes		✓
Inlet air heater		✓	750 mm (30") triple grouser track shoes		✓
Engine oil sensor		✓			
10 micron primary filter with water separator	✓				
Electric fuel priming pump	✓				
Secure start with PIN code	✓				
Remote disable	✓				
<b>HYDRAULIC SYSTEM</b>					
Boom and stick regeneration circuit	✓				
Electronic main control valve	✓				
Auto dig boost	✓				
Auto hydraulic oil warmup	✓				
Bio hydraulic oil capability	✓				
Fine swing	✓				
Reverse swing damping valve	✓				
Auto swing parking brake	✓				
High performance hydraulic return filter	✓				
Two speed travel	✓				
Single one-way circuit	✓				
Combined two-way circuit		✓			

## Cab Options

ROPS	●
High-resolution 203 mm (8") LCD touchscreen monitor	●
High-resolution 254 mm (10") LCD touchscreen monitor	○
Auto bi-level air conditioner	●
Keyless push-to-start engine control	●
Air-suspension seat	●
51 mm (2") seat belt	●
Bluetooth radio with USB/Aux ports	●
24V DC outlet	●
Beverage holder	●
Openable two-piece front window	●
Rear window emergency exit	●
Radial wiper with washer	●
Openable steel hatch	●
LED dome light	●
Roller front sunscreen	●
Roller rear sunscreen	○
Washable floor mat	●

● Standard

○ Optional

# 352 Attachments

## Dealer Installed Kit and Attachments

Attachments may vary. Consult your Cat dealer for details.

### CAB

- Radial lower wiper
- Polycarbonate roof hatch
- LH/RH electrical pedal for tool control
- Rain protector plus cab light cover

### GUARDS

- Falling object guard system
- Mesh guard full front
- Mesh guard lower half front
- Full protecting vandalism guard

### ELECTRICAL

- Premium surround lighting

For more complete information on Cat products, dealer services, and industry solutions, visit us on the web at [www.cat.com](http://www.cat.com)

© 2021 Caterpillar  
All rights reserved

Materials and specifications are subject to change without notice. Featured machines in photos may include additional equipment. See your Cat dealer for available options.

CAT, CATERPILLAR, LET'S DO THE WORK, their respective logos, "Caterpillar Corporate Yellow," the "Power Edge" and Cat "Modern Hex" trade dress as well as corporate and product identity used herein, are trademarks of Caterpillar and may not be used without permission.

AEXQ3369-01 (11-2021)  
Build Number: 08A  
(China, Hong Kong, Taiwan)

