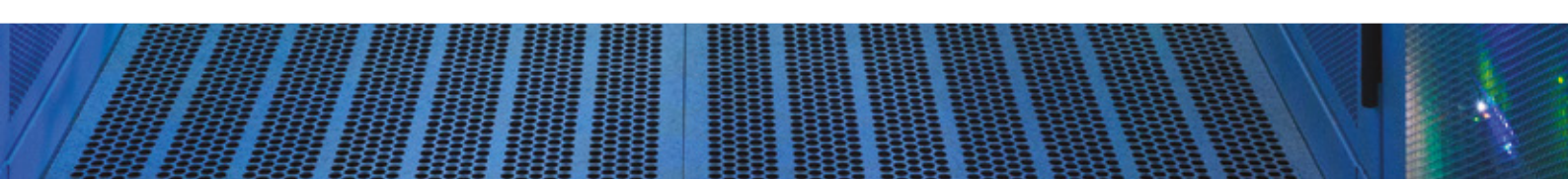




# **POWERING THE DATA CENTRE OF TOMORROW**







For over 50 years, FG Wilson generator sets have been trusted to provide essential power to a wide range of applications globally. From 6.8 to 2,500 kVA, FG Wilson offers a wide range of diesel-fuelled generator sets, built in modern facilities in Brazil, China and India. Founded in Belfast, United Kingdom, in 1966, FG Wilson quickly grew to become the largest generator set manufacturer in Europe. Today's range of FG Wilson generator sets builds on our long heritage.

Our expertise has built more than 700,000 generator sets globally since 1990 for a multitude of applications and installed in various environments.

## **FG WILSON PARTS & SERVICE CAPABILITY**

FG Wilson products are supported by our global dealer network, providing 24/7 service and aftersales support.

FG Wilson parts inventory within our distribution network ensures your gensets are never offline.




# OVERVIEW

The active internet users across the world are over 4.66 billion as of January 2021. Every day 1.145 trillion MB of data is generated online. Artificial Intelligence, Big Data analytics are helping multinational companies to offer a personalised product communication to the consumer. Today everyday life is heavily dependent on the internet and the use of data. From communication with family and friends on social media or video communication to closing multi-million dollar deals, a reliable connection to data has now become essential for everyone.

This means the data must be available 24/7, 365 days a year, across the world. This growing demand has placed more and more dependence on data centres, and the need for a dependable and continuous supply of data. Data outage is not an option, therefore a continuous source of backup power to support the data center is absolutely essential. To maintain continuous operation of the data centre, the computer equipment has two essential requirements:

- Continuous uninterrupted electrical power.
- Continuous cooling of the computer rooms to remove the heat produced from the computer processors.



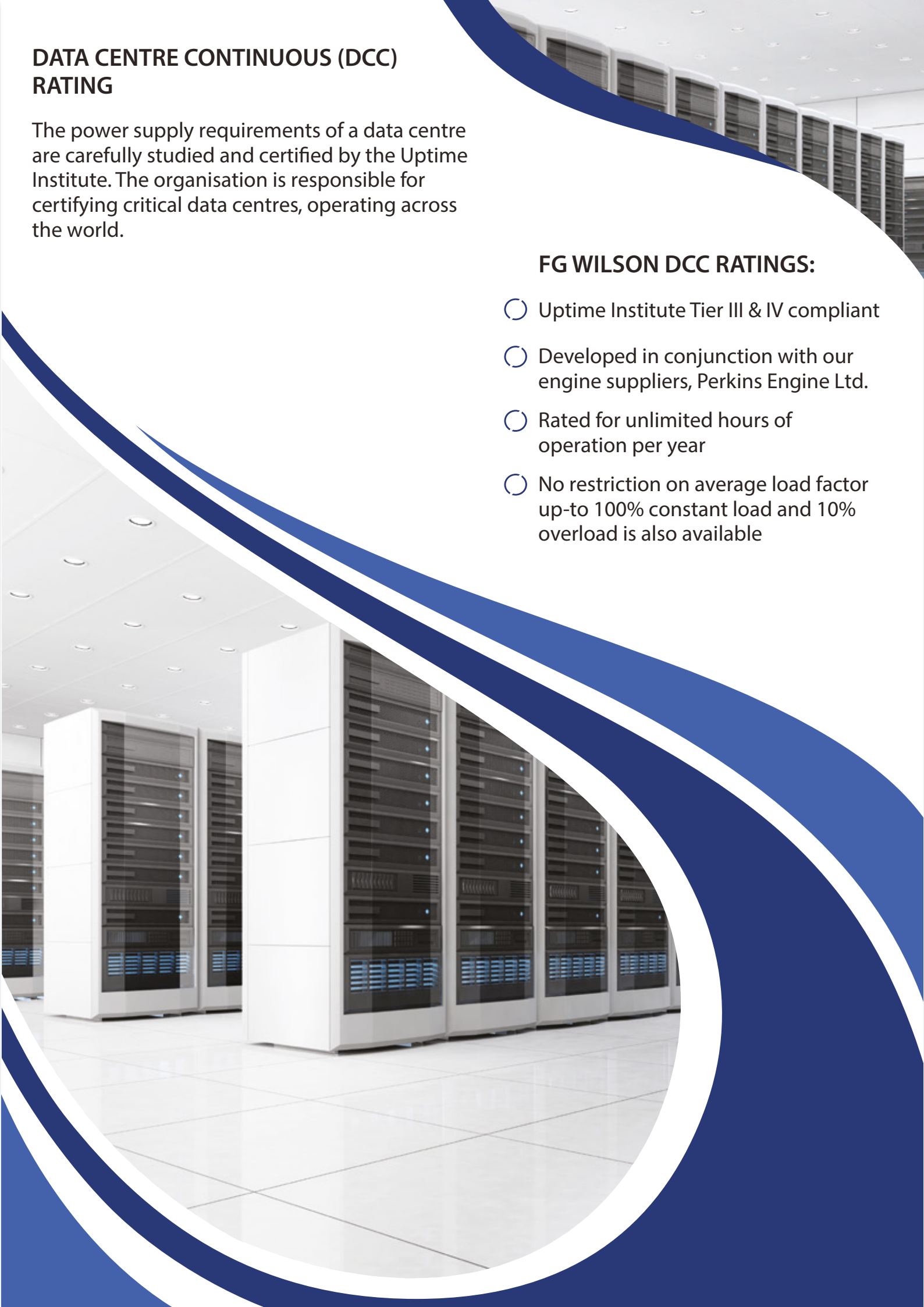
**FG Wilson Gensets can be customised to meet the continuous power requirement of any critical data centre.**

## DATA CENTRE CONTINUOUS (DCC) RATING

The power supply requirements of a data centre are carefully studied and certified by the Uptime Institute. The organisation is responsible for certifying critical data centres, operating across the world.

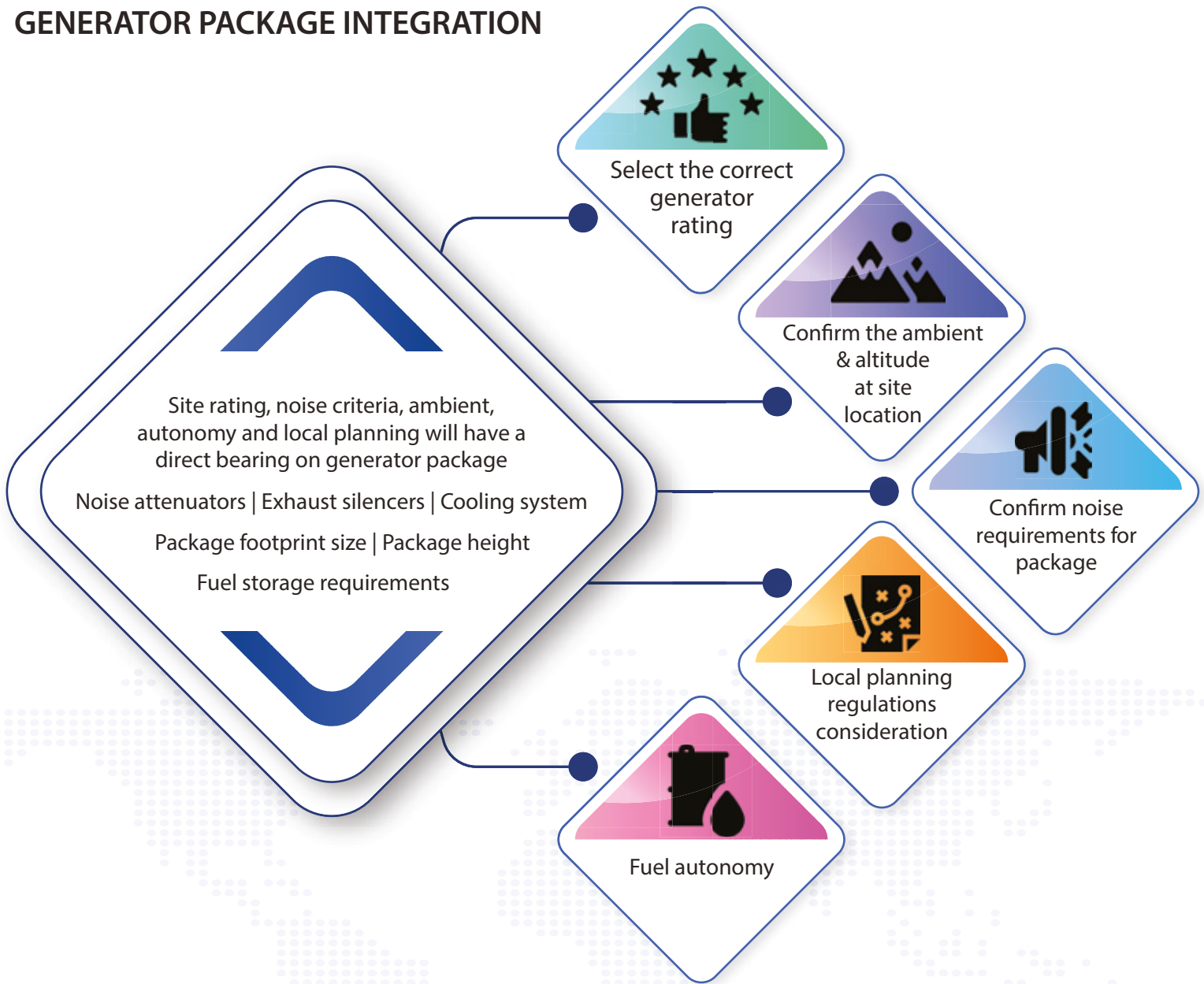
### FG WILSON DCC RATINGS:

- Uptime Institute Tier III & IV compliant
- Developed in conjunction with our engine suppliers, Perkins Engine Ltd.
- Rated for unlimited hours of operation per year
- No restriction on average load factor up-to 100% constant load and 10% overload is also available

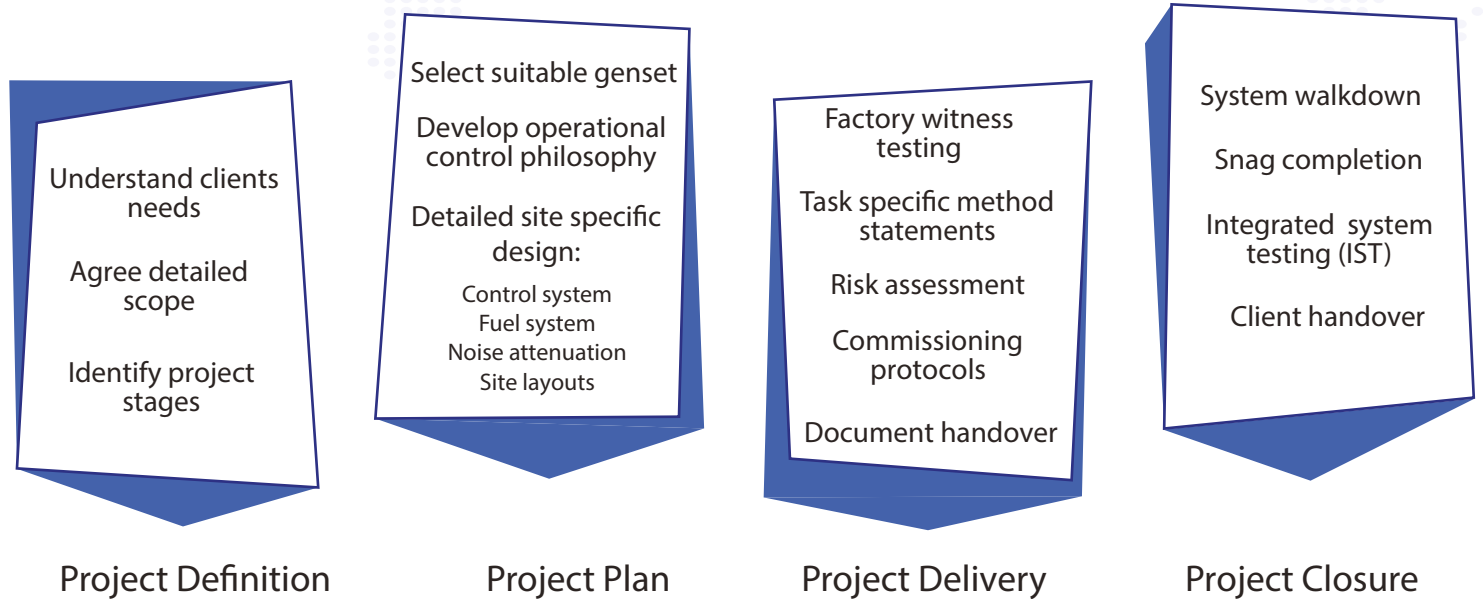




# GENERATOR PACKAGE INTEGRATION



# GENERATOR PROJECT DELIVERY BY FG WILSON DEALERS



## CUSTOMISED POWER SOLUTIONS OFFERED BY FG WILSON



At FG Wilson we understand that every project is unique and may need a tailor-made customised solution. The power requirement for a residential project compared to a data centre can be very different. That means our subject matter experts can help you find a solution that meets your specific needs by working on your load requirement, finding the right size generator set, designing the complete layout of the plant room including exhaust and fuel systems, installation and commissioning.

When you entrust your power project to us, you get the benefit of our 50 years of experience from highly trained global technical teams who nurture your project from initial design and manufacture through to installation and commissioning.

### CONTROL PANELS

Control panels are a critical component of a generator set. From the outset we've focused on design of intuitive control panels which our customers can rely on. FG Wilson generator sets come with a full range of plug and play digital, automatic and synchronising control panel systems.

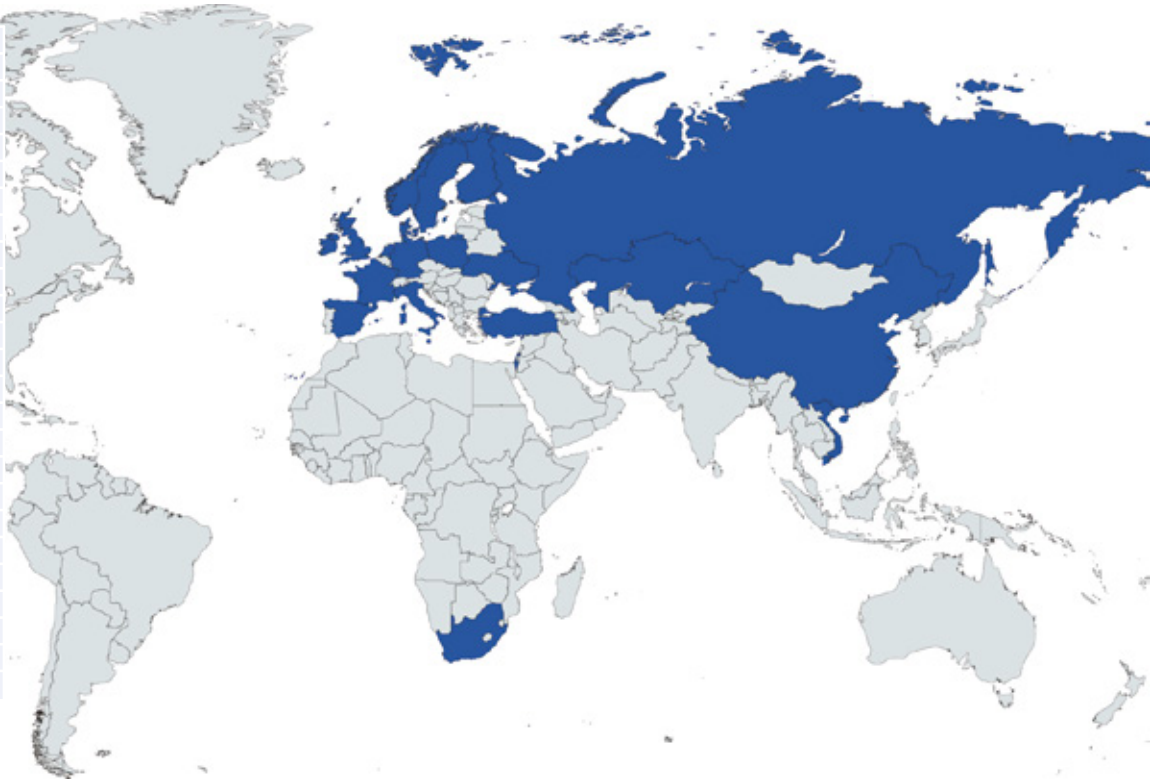
### TESTING AND VALIDATION

Every new product is put through rigorous testing and validation before they are launched. Each unit is run for at least 500 hours and tested for rating performance, cooling, noise, reliability, water ingress and safety. In addition, each genset is tested before it leaves the production facility to ensure ONE global quality standard is maintained.

## DATA CENTRE PROJECTS POWERED BY FG WILSON

FG Wilson generator sets are available worldwide through our extensive dealer network. With over 110 dealers across the globe, FG Wilson can offer expert local advice, assistance with sales and parts & service support.

Country	Capacity
China	123MW
Denmark	9MW
Finland	19MW
France	1.6MW
Germany	6.8MW
Ireland	239MW
Israel	60MW
Italy	23MW
Kazakhstan	15MW
Malaysia	12MW
Malta	1.6MW
Netherlands	14.2MW
Norway	40MW
Poland	27MW
Russia	167MW
Singapore	26MW
South Africa	11MW
Spain	38MW
Sweden	50MW
Turkey	112MW
UAE	30MW
UK	230MW
Ukraine	22MW
Vietnam	2MW



“ Self-Contained Generator Sets, Which Are Easy To Install And Operate, Designed For A Long And Productive Working Life And Which Represent Value For Money ”





## FG WILSON DCC RATING PRODUCTS

FG Wilson\* established, in conjunction with Perkins Engine Company Limited, a continuous rating for engines operating in data centre applications Data Centre Continuous Ratings (DCC). Please refer to the table below for the DCC ratings which have been rated for unlimited hours of operation, with no restrictions on average variable load factor up to 100% constant load. 10% overload for 1 hour in every 12 hours operation is available within the rating, if not otherwise stated. These ratings are consistent with the requirements of the Uptime Institute's Tier III /IV classification.

Generator Set Model	Engine Model	Engine GEP (kWm)	Alternator Model	Generator Set DCC Rating (kVA)	Generator Set DCC Rating (kWe)
P250-5	1506A-E88TAG2	213	LL5114H	230	184
P275-5	1506A-E88TAG3	236	LL5114H	250	200
P300-5	1506A-E88TAG4	258	FG26A230/LL5114J	275	220
P330-5	1506A-E88TAG5	281	FG26A250/LL5114J	300	240
P400-3	2206A-E13TAG2	324	FG29A280/FGL50070	350	280
P450-3	2206A-E13TAG3	368	FG29A320/FGL60010	400	320
P500-3	2506A-E15TAG1	412	FG29A360/FGL60020	455	364
P550-3	2506A-E15TAG2	451	FG29A400/FGL60020	500	400
P605-3	2806A-E18TAG1	495	FG33A450/FGL60040	550	440
P660-3	2806A-E18TAG1A	540	FG33A500/FGL60050	600	480
P715-3	2806A-E18TAG2	584	FG33A560/FGL60060	650	520
P780-1	2806A-E18TTAG4	623	LL7224J	706	564
P730P1	4006-23TAG2A	658	LL7224J	730	584
P850-1	2806A-E18TTAG5	676	LL7224L	770	616
P900-1	4006-23TAG3A	705	FGL70030/LL7224L	800	640
P1000-1	4008TAG1A	805	FGL70040/LL7224N	910	728
P1100-1	4008TAG2A	899	FGL70050/LL7224P	1000	800
P1250-1	4008-30TAG3A	997	LL8224H	1125	900
P1375-1	4012-46TWG2A	1113	LL8224H	1250	1000
P1500-1	4012-46TWG3A	1207	LL8224L	1350	1080
P1650-1	4012-46TAG2A	1331	LL8224N	1500	1200
P1760-1	4012-46TAG3A	1500	LL8224P	1600	1280
P1875-1	4012-46TAG3A	1500	LL9324F	1700	1360
P1800P3 <sup>1</sup>	4012-46TAG3A	1564	LL9324F	1800	1440
P2000-3	4016-61TRG1	1648	LL9324F	1850	1480
P2250-3	4016-61TRG2	1774	LL9324H	2000	1600
P2500-3	4016-61TRG3	1975	LL9324P	2250	1800
P2500-1D <sup>1</sup>	4016-61TRG3X	2183	LL9324R	2500	2000

Note 1: This rating does not offer 10% overload.

The DCC ratings are based on Normal temperature and pressure (NTP) site conditions 25°C (77°F) Air InletTemp, 100m (328 ft) A.S.L. & 30% relative .





# POWERING THE DATA CENTRES OF TOMORROW

For over 50 years FG Wilson have been supplying and installing reliable and quality products worldwide. Every FG Wilson genset in all our manufacturing facilities, are designed and built to our global manufacturing quality standards, ensuring every part of the production process is reaching the high-quality standards, producing products that last a lifetime. As a leader in the power generation industry, we are very proud of our company heritage and continue to meet our customer needs, small or large, with power they can rely on.



[www.fgwilson.com](http://www.fgwilson.com)

Follow Us On



Scan to find your  
nearest dealer