



CAT® APP RELEASE NOTES iOS_2.35 | ANDROID_2.35 NOVEMBER 2021

CAT® APP

24/7 EQUIPMENT MANAGEMENT ON-THE-GO

Efficient equipment management starts with the Cat App. Track the location and health of your equipment, order service and parts, and activate telematics devices directly from your mobile device. Staying on top of your fleet 24/7 has never been easier.

WHAT'S NEW

Directions as you like them

You can now utilize your native mapping applications to “Get Directions” to an Asset.

Notifications get a new look

The look and feel of push notifications has been enhanced.

Custom notifications made easier

The “Near Me’ Notification Filter is now a slider for easy personalization

Enhanced Dealer Selection

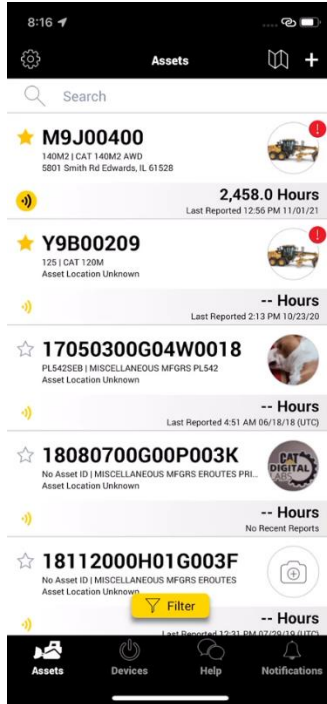
Multiple options for more accurate selections

NEW FEATURES

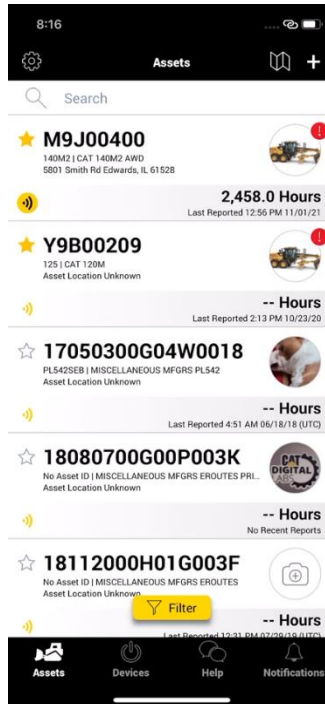
GET DIRECTIONS TO AN ASSET

CAT® APP SUPPORTS: GOOGLE MAPS, APPLE MAPS AND WAZE

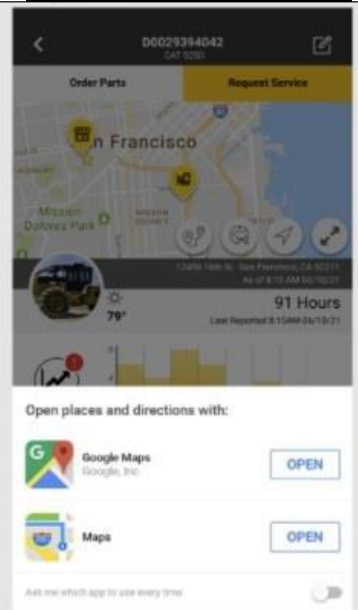
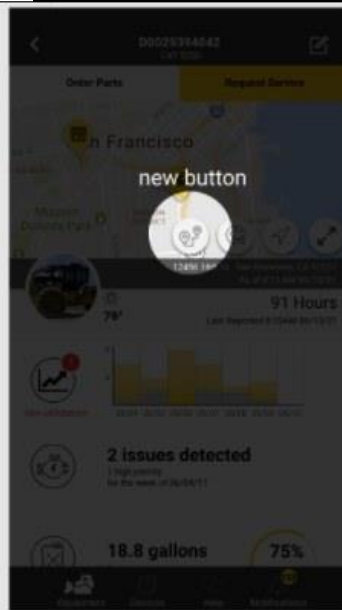
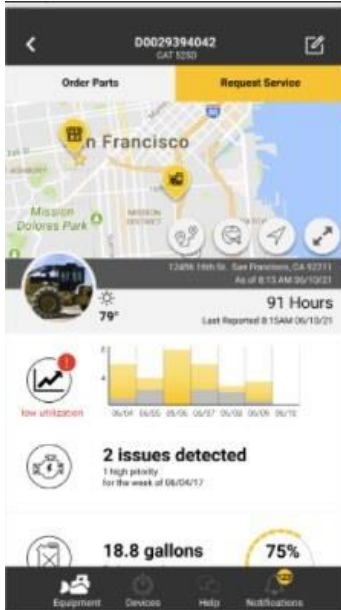
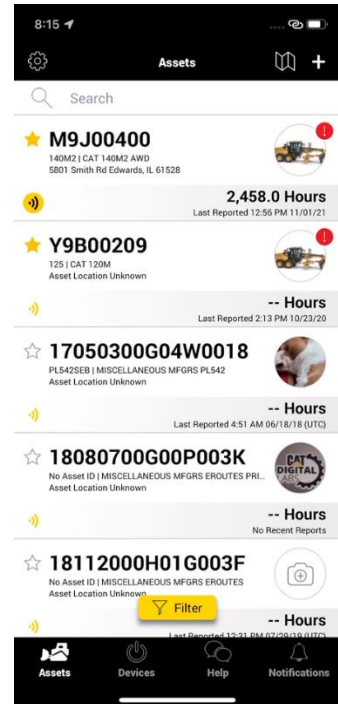
WAZE



APPLE



GOOGLE



PUSH NOTIFICATIONS UPDATE GET DIRECTIONS TO AN ASSET

CAT® APP SUPPORTS: GOOGLE MAPS, APPLE MAPS AND WAZE

ADDED ADDITIONAL FAULT CODE INFORMATION

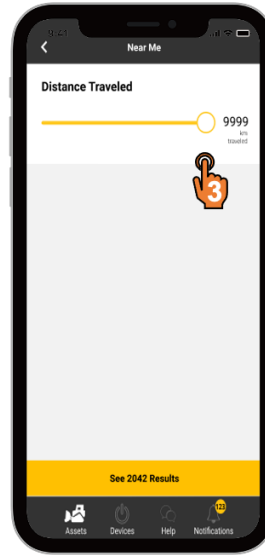
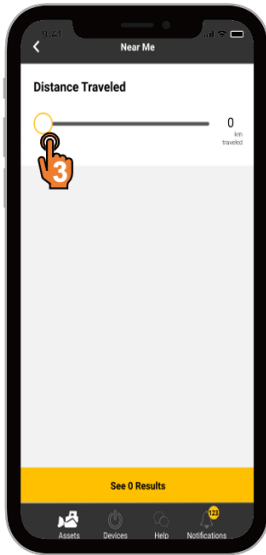
Format now includes:

- Severity
- Make | Serial Number / AssetID
- Fault Code | Description



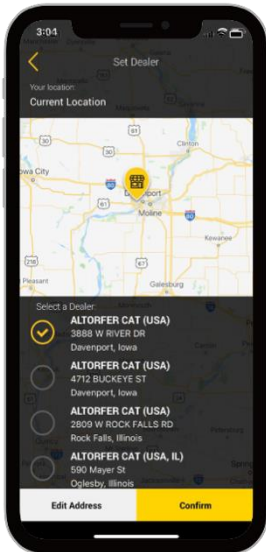
NOTIFICATION FILTER

UPDATED TO A SLIDE TO MAKE IT EASIER TO USE



ADDITIONAL DEALER SELECTION

ENABLING ADDITIONAL CHOICES WITHOUT THE NEED TO CHANGE YOUR ADDRESS



BUG FIXES

We've addressed the following bug fixes to enhance the overall user experience:

Fix Details	Version	Bug Number
Android - Alert badge appears for suspended asset	2.35	505466
Android - B2C - Prod profile biometric token refresh remains on "Log in as" screen too long	2.35	489712
Android - CreateAccountLocale_On Edit Address Screen, Clicking on Confirm button not performing any action	2.35	514413
Android - Demo mode Localization_Entry Screen appears in "English" for all languages in Android	2.35	508645
Android - Demo Mode Notifications - Filter for Fault Codes has 0 results	2.35	523053
Android - Filter screen issues	2.35	506737
Android - Fleet List - Suspended asset (unconnected) not at bottom of list	2.35	507411
Android - Localization_Demo_mode_FAQ Text-Help tab text is not changed to native language	2.35	514578
Android - Localization_On request service screen in Devices, invalid string translation for Pre populated text for Service Location	2.35	508582
Android - Notifications - Tapping Notifications tile does not function in Demo Mode	2.35	524227
Android - PL161 - Registration page Assed iD example text appear incorrect in Japanese	2.35	527039
Android - PM - Incorrect hours intervals for maintenance tiles	2.35	489246
Android - Primary Identifier - setting changes unexpectedly	2.35	513337
Android - SCV - Name of selected company displayed in Gear menu improperly	2.35	509182
Android - Service Request - Request Submitted message in all caps	2.35	513946
Android-Localization-Demo mode-Address is not changing for native language for asset 3	2.35	514743
Android-Localization-Demo mode-Drawer Menu-Text is not changed to Native language	2.35	514591
Android-Localization-Demo mode-The specified Language is not converting in the application-hours text	2.35	514696
iOS - Alert badge appears for suspended asset	2.35	505490
IOS - Demo_mode_For Share Cat App tab text, App language is not converted to specified language.	2.35	508647
IOS - DemoMode_Header Text displayed in App UI does not match with the text returned from API	2.35	508561

IOS - DemoMode_Localization_Translation mismatch on View Demo button Screen	2.35	508537
iOS - Fleet list - Suspended asset shows incorrect connectivity icon	2.35	505491
iOS - Force Update - iOS allows login when force update is active	2.35	458278
iOS - Force Update - iOS allows login when force update is active	2.35	530678
iOS - Localization_ Asset Tab and Device tab has same name in German	2.35	508578
IOS - Localization_Fault Codes screen remains in english only	2.35	508562
IOS - Localization_On Notification and Alert screen, "Notifications and alerts" header remains in English for all languages	2.35	508557
iOS - PL161 - Registration page Assed iD example text appear incorrect in Japanese.	2.35	524352

