

D6R2

TRACK-TYPE TRACTOR



Horsepower Range

ISO 9249/SAE J1349 141-176 kW (189-236 hp)
ISO 9249 (DIN) 192-239 mhp

Operating Weight

D6R2 (SU) 19 066 kg (42,033 lb)
D6R2 XL (SU) 19 914 kg (43,903 lb)
D6R2 LGP 21 661 kg (47,754 lb)

Cat® C9 Engine emits equivalent to China Nonroad Stage II/U.S. EPA Tier 2/EU Stage II or meets China Nonroad Stage III emission standards, equivalent to U.S. EPA Tier 3/EU Stage IIIA.



THE CAT® D6R2

RELIABLE PRODUCTIVITY

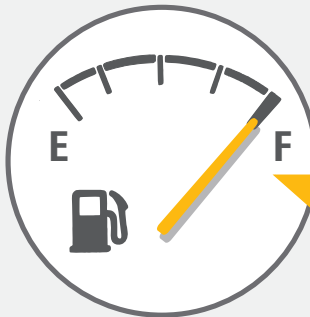
From rugged structures and integrated power train to operator comfort and ease of operation, the D6R2 is a world-class dozer built to help you produce the highest quality work in a variety of applications.



DESIGNED TO GET YOUR JOB DONE

The Cat® D6R2 dozer comes to your job site backed by more than 100 years of track-type tractor leadership. Caterpillar designs and builds the integrated engine and power train to work together so you experience maximum productivity, efficiency and reliability.

- + PRODUCTIVE IN A WIDE VARIETY OF APPLICATIONS
- + FUEL EFFICIENT – MOVE MORE MATERIAL PER LITRE/GALLON OF FUEL
- + BALANCED FOR A SMOOTHER RIDE



POWER AND EFFICIENCY TO
MOVE MORE MATERIAL
PER LITRE/GALLON OF FUEL

PRODUCTIVE OPERATORS

Quiet, comfortable cab, intuitive controls and excellent visibility help operators work at their best all day long.

DURABLE

Elevated sprocket, rugged structures and proven systems give you long life and durability.

TOP PERFORMANCE

Differential steering and two-pump hydraulics give you the power and precision you need to maximize your productivity.

TOP PERFORMER

A Cat C9 engine and proven, electronically controlled transmission give you the power to get the job done. An efficient aluminum bar plate cooling system gives you the cooling capability to handle a broad range of conditions.

POWER TO THE GROUND

A single stage torque divider sends 70 percent of engine torque through a converter and the other 30 percent through a planetary gear set so you get more power to the ground.

BETTER TURNING

Differential steering increases the speed of one track while slowing the other one down to give you exceptional turning, even with a full blade load. This provides greater maneuverability, faster cycle times and better performance in soft underfoot conditions.



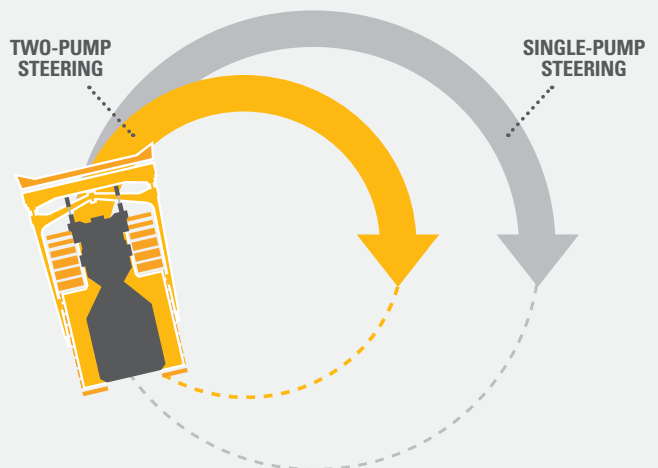


BETTER RESPONSE

FINISH JOBS FASTER

Dedicated implement and steering pumps mean you can count on simultaneous blade response and steering performance. This gives you precision and maneuverability that is especially beneficial for working in close quarters on construction sites or land clearing. Field-proven load sensing hydraulics utilize a variable displacement piston pump to continuously adjust implement hydraulic power for maximum efficiency.

TURN TIGHTER WORK FASTER



TWO-PUMP HYDRAULICS

BETTER TURNING + BLADE RESPONSE
MORE PRECISION
FASTER CYCLE TIMES

STRONGER FROM THE INSIDE OUT

The foundation of every Cat dozer is a rugged mainframe built to absorb high impact shock loads and twisting forces. Castings add strength to the main case and equalizer bar saddle. A modular design allows easy installation and removal of major components for service/rebuild.

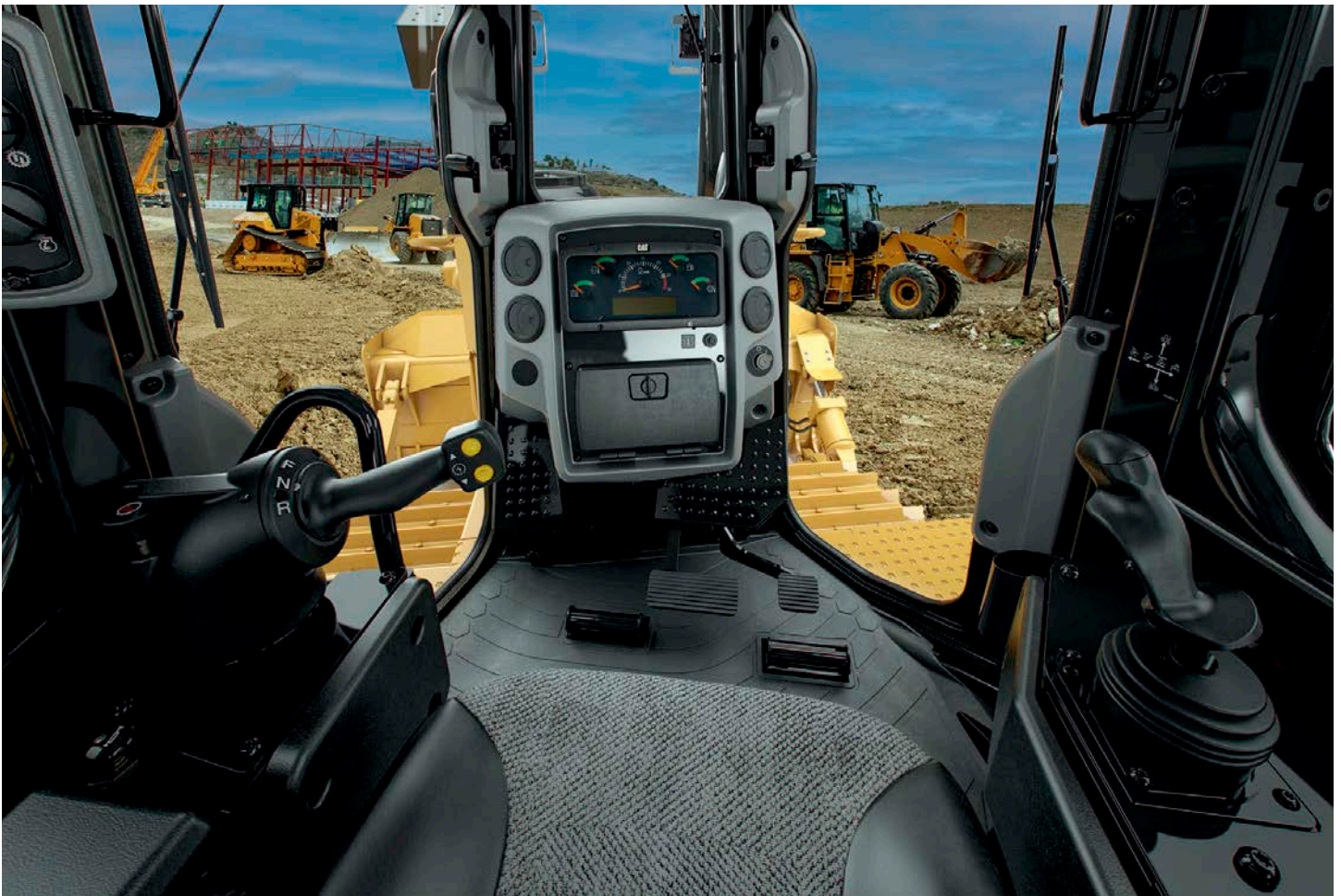


BETTER RIDE, MAXIMUM TRACTION

Pinned pivot shafts connect the mainframe and roller frames for independent oscillation. This gives you added strength and ground clearance, plus allows the dozer to better follow ground contours for maximum traction and operator comfort.

TOUGH ON THE JOB EASY ON OPERATORS

Comfortable, quiet cab offers excellent all-around visibility. Pressurization helps reduce dust in the cab, and a standard suspension seat offers multiple adjustments for greater operator comfort.



GAIN EFFICIENCY

Optional Auto Shift automatically down shifts to the most efficient gear based on load to save fuel and increase productivity. Use optional bi-directional control to dial in preselected forward/reverse gears for reduced effort and improved efficiency.

STAY INFORMED

The instrument panel has easy-to-read gauges so you can monitor fuel levels, engine speed, temperature levels and more. Lights and/or alarms keep operators informed about conditions like restrictions to engine intake air, power train or fuel filters or water in the fuel.

TAKE CONTROL

Ergonomic, low-effort implement and steering controls offer simple, precise operation. Use a single handle tiller bar for direction changes and to select gears with the touch of a button. Implement Lock-Out prevents inadvertent operation of hydraulic attachments.

ELEVATE YOUR PRODUCTIVITY

The elevated sprocket design helps protect major components from harsh impacts and provides a modular design for convenient service. The operator has excellent sight lines to the blade, sides and back of the machine. The center of gravity remains low, offering outstanding stability, balance and traction.



ON TRACK FOR TOP PERFORMANCE

Heavy Duty undercarriage, with lifetime lubricated track, carrier rollers and idlers, is standard on the D6R2. The components are designed for extended wear life in abrasive or high impact conditions like forestry, side slopes or working in rocky terrain.

Choose Cat Abrasion undercarriage (XL/LGP) designed to work and wear as a system for longer life and lower costs in abrasive or low/moderate impact applications.

EQUIPPED FOR THE JOB

READY TO WORK

From high strength bulldozer blades to a variety of rear attachments, you can outfit your dozer the way you need it. Please consult your Cat dealer for available options to best suit the types of work you do.

PUSHING POWER

L-shaped push arms bring the blade closer to the machine for better balance, maneuverability and blade penetration. The added lateral stability and better cylinder positions offer constant pryout capability regardless of blade height. The trunnion joint design requires no adjustments to keep the blade tight.



STRONG OUT FRONT

Dozer blades are manufactured from high tensile strength steel. The robust multi-cell design stands up to the most severe applications. **Semi-Universal, Straight** and **Angle Blades** are available, as well as specialty blades for landfill and land clearing applications.



VERSATILE ATTACHMENTS

Outfit your dozer with a three-shank ripper with curved or straight ripper shanks. Rear counterweights optimize balance for backing up steep slopes or increasing performance in heavy dozing applications. Choose a drawbar for towing and recovery or outfit your dozer with a winch.



YOUR DOZER, YOUR WAY

BUILD TO SUIT

Choose from a variety of factory options to equip your dozer for the challenges of working in the harshest applications. Guarding, screens, specialty blades and more give you the tools you need to work in waste/landfill, forestry/land clearing and arctic cold conditions.



FORESTRY/ LAND CLEARING

Optional sweeps help protect the cab, top and sides of the machine. Window and door screens offer operators added protection in open canopy environments (ISO 8084). Additional guarding helps protect machine structures from heavy debris. High debris cooling system is designed for easy cleanout.

ARCTIC COLD

Reversible fan allows manual adjustment of air flow through the radiator. Heavy duty battery and alternator for added cold start capability. Solid hood for added protection against snow and ice. Arctic cab with dual pane glass, as well as optional heated suspension seat, offer greater operator comfort in extreme cold. Oils and final drive seals are designed to stand up to extreme cold conditions.

WASTE HANDLER

Specialized guarding, striker bars and seals help protect the machine from impact and airborne/wrapping debris. The cooling system and thermal shielding on the engine are designed for high debris environments and easy access for cleanout. Specialized air handling features help deliver cleaner air to the machine. Landfill blades and center-hole track shoes help you optimize your waste handler for the job.

CAT EQUIPMENT MANAGEMENT TAKES THE GUESSWORK OUT OF MANAGING YOUR EQUIPMENT

Getting the most out of your equipment requires hundreds of decisions, every day. Cat Equipment Management gives you access to all the data you need to keep your equipment on the job site and earning money. You can track equipment location and hours, monitor machine use and health, then take informed action that will keep your operation running smoothly, efficiently and profitably.

CAT PRODUCT LINK™

Cat Equipment Management telematics technology helps take the complexity out of managing your jobsites by gathering data generated by your equipment, materials and people and serving it up to you in customizable formats.



VISIONLINK®

Access information anytime, anywhere with VisionLink® – and use it to make informed decisions that boost productivity, lower costs, simplify maintenance and improve safety and security on your jobsite. With different subscription level options, your Cat dealer can help you configure exactly what you need to connect your fleet and manage your business without paying for extras you don't want. Subscriptions are available with cellular or satellite reporting or both.



CAT APP

The Cat App helps you manage your assets – at any time – right from your smartphone. See fleet location and hours, get critical required maintenance alerts, and even request service from your local Cat dealer.



SAVE MAINTENANCE TIME

Cat dozers are designed for ease of repair and maintenance so you can spend less time on service and more time on the job. Features like grouped service points, site gauges and easy engine compartment access help make regular maintenance faster and more convenient.

DESIGNED FOR DURABILITY

Updated design places the alternator in an elevated location for added protection, especially in wet, sandy conditions. Cab-mounted air conditioning condenser increases system capability, while improving engine cooling and serviceability.

ADDED EFFICIENCY

High efficiency fuel filters have water-in-fuel sensors to add to fuel system robustness. Optional high speed oil change system enables contamination free and time saving service of engine and power train oil.

EASE OF SERVICE

BECAUSE UPTIME COUNTS



MORE THAN MACHINES

BUILT AROUND YOUR SUCCESS

When you buy Cat equipment, you get so much more than the machine. You also get the support of a best-in-class dealer network, backed by a range of flexible solutions, technology, tools and more.



CUSTOMER VALUE AGREEMENTS

A Customer Value Agreement (CVA) from your Cat dealer helps you do more and worry less. A CVA simplifies machine ownership and maintenance, adds the security of expert dealer support and gives you the peace of mind from effective equipment health management.

REPAIR OPTIONS

A broad range of repair options give you choices that work with your needs, budget and timeline. Every repair is performed by expert Cat technicians. You'll receive smart repair advice, a timely, accurate quote and service that gets your machine back into action quickly.

GENUINE CAT PARTS

Genuine Cat Parts deliver the highest level of reliability and productivity. Order direct from your Cat dealer or shop online at parts.cat.com or myparts.cat.com.

FINANCIAL SERVICES

Count on Cat Financial to provide the best finance and extended protection solutions for your business. For more than 30 years, we have helped our customers succeed through financial service excellence.

GET BACK TO WORK

Services to help you save time, save money and get back on the job.

CAT INSPECT

Access your equipment data on your mobile device. This easy-to-use app lets you capture inspection data and integrates with your other Cat data systems, so you can keep a close eye on your fleet.

HYDRAULICS AND HOSE

Whether you choose new, Reman, exchange or rebuilt hydraulic components, you'll get expert diagnostics, testing and contamination control. Cat Hose Service offers hoses and couplings for most makes and models.

CERTIFIED REBUILD

Get a full second machine life at a fraction of the cost of buying new. With upgraded features, safety enhancements and the latest technologies, your old machine will perform even better than it did when it rolled off the line.

TECHNICAL SPECIFICATIONS

See cat.com for complete specifications.

HORSEPOWER RATINGS

Engine	Cat C9				
Emissions	Equivalent to China Nonroad Stage II/U.S. EPA Tier 2/EU Stage II				
D6R2 Standard				D6R2 XL/LGP	
Net Power (1,900 rpm)				Net Power (1,800 rpm)	
ISO 9249/SAE J1349	141 kW	189 hp	ISO 9249/SAE J1349	158 kW	212 hp
ISO 9249 (DIN)	192 mhp		ISO 9249 (DIN)	215 mhp	

Engine	Cat C9				
Emissions	China Nonroad Stage III, equivalent to U.S. EPA Tier 3/EU Stage IIIA				
D6R2 Standard				D6R2 XL/LGP	
Net Power (1,300 rpm)				Net Power (1,300 rpm)	
ISO 9249/SAE J1349	162 kW	218 hp	ISO 9249/SAE J1349	176 kW	236 hp
ISO 9249 (DIN)	220 mhp		ISO 9249 (DIN)	239 mhp	

- Net power advertised is the power available at the flywheel when engine is equipped with a fan at maximum speed, air cleaner, muffler, alternator.
- Advertised power is tested per the specified standard in effect at the time of manufacture.

	OPERATING WEIGHT		GROUND PRESSURE (ISO 16754)	
D6R2 Standard (S)	18 984 kg	41,853 lb	62.4 kPa	9.0 psi
D6R2 Standard (SU)	19 066 kg	42,033 lb	62.6 kPa	9.1 psi
D6R2 Standard (A)	19 448 kg	42,875 lb	63.9 kPa	9.3 psi
D6R2 XL (SU)	19 914 kg	43,903 lb	60.7 kPa	8.8 psi
D6R2 XL (A)	19 969 kg	44,024 lb	60.9 kPa	8.8 psi
D6R2 LGP	21 661 kg	47,754 lb	35.4 kPa	5.1 psi

SERVICE REFILL CAPACITIES		
Fuel Tank	424 L	112.0 gal
Cooling System	59.4 L	15.7 gal
Power Train	146 L	38.6 gal

BLADE	CAPACITY		WIDTH	
Semi-Universal (6SU)	5.6 m ³	7.3 yd ³	3260 mm	128.3 in
Straight (6S)	4.0 m ³	5.2 yd ³	3360 mm	132.3 in
Angle (6A)	4.0 m ³	5.2 yd ³	4166 mm	164.0 in
Straight (LGP 6S)	3.8 m ³	5.0 yd ³	4063 mm	160.0 in

Please see full Technical Specifications publication for additional specifications for these blades, as well as specialty blades for Landfill and Land Clearing applications.

STANDARD & OPTIONAL EQUIPMENT

Standard and optional equipment may vary. Consult your Cat dealer for details.

POWER TRAIN	STANDARD	OPTIONAL
Cat C9 turbocharged direct injection diesel engine	●	
Air cleaner, precleaner with strata tube dust ejector	●	
Air filter with electronic service indicator	●	
Aluminum bar plate Air-to-Air Aftercooler (ATAAC)	●	
Direct drive fan blower	●	
Electric fuel priming pump	●	
Final drives, 3-planet single reduction planetary	●	
Planetary transmission, electronic power shift 3F/3R speeds	●	
Prescreener	●	
Radiator core protector		●
Radiator fan, ejector		●
Radiator fan, increased speed (high ambient)		●
Radiator fan, reversible (cold weather)		●
Raised precleaner		●
Turbine precleaner with screen		●

OPERATOR ENVIRONMENT	STANDARD	OPTIONAL
Adjustable armrest	●	
Adjustable contour suspension seat	●	
Cab with integrated ROPS	●	
Retractable 76 mm (3 in) seat belt	●	
Arctic cab with integrated ROPS		●
Canopy with integrated ROPS		●
Suspension seat, cloth cover		●
Suspension seat, cloth cover, heated and ventilated		●
Suspension seat, vinyl cover		●

ELECTRICAL	STANDARD	OPTIONAL
Halogen lights (4)	●	
Halogen lights (4 – sweep)		●
Halogen lights (6)		●
Halogen lights (8 – sweep)		●
LED lights (6)		●

UNDERCARRIAGE	STANDARD	OPTIONAL
Heavy Duty sealed and lubricated track	●	
Cat Abrasion (XL and LGP)		●
Waste handling/landfill (XL and LGP)		●

SERVICE AND MAINTENANCE	STANDARD	OPTIONAL
Diagnostic connector	●	
Sampling ports	●	
Ecology drains, power train		●
High speed oil change system		●

TECHNOLOGY PRODUCTS	STANDARD	OPTIONAL
Cat Product Link ready	●	
Cat Product Link, Cellular PL641	●	
Cat Product Link, Satellite PL631		●

BLADES	STANDARD	OPTIONAL
Angle blade, hydraulic or mechanical tilt (STD and XL)		●
Angle blade, hydraulic or mechanical tilt, land clearing (XL)		●
Semi-Universal blade, hydraulic tilt (STD and XL)		●
Semi-Universal blade, hydraulic tilt, land clearing (STD and XL)		●
Semi-Universal blade, hydraulic tilt, landfill (XL)		●
Straight blade, hydraulic tilt (STD and LGP)		●
Straight blade, hydraulic tilt, landfill (LGP)		●

ATTACHMENTS	STANDARD	OPTIONAL
Multi-shank ripper, straight or curved shanks (3)		●
Rear counterweight		●
Rigid drawbar		●
Ripper hydraulics		●
Striker bar, rear (XL or LGP)		●
Striker bars, front (XL or LGP)		●

GUARDS	STANDARD	OPTIONAL
Bottom guards	●	
Engine cover with perforated hood and side enclosures	●	
Forward protection sweeps		●
Fuel tank guard		●
Heavy duty bottom guard		●
Heavy duty radiator guard		●
Hydraulic blade tilt line guards		●
Land clearing guards		●
Solid hood engine enclosure		●
Transmission guard		●

Not all features are available in all regions. Please check with your local Cat dealer for specific offering availability in your area.
For additional information, refer to the Technical Specifications brochures for the D6R2 available at www.cat.com or your Cat dealer.

For more complete information on Cat products, dealer services and industry solutions, visit us on the web at www.cat.com

© 2021 Caterpillar. All Rights Reserved.

VisionLink is a trademark of VirtualSite Solutions LLC, registered in the United States and in other countries.

Materials and specifications are subject to change without notice. Featured machines in photos may include additional equipment. See your Cat dealer for available options.

CAT, CATERPILLAR, LET'S DO THE WORK, their respective logos, Product Link, "Caterpillar Corporate Yellow", the "Power Edge" and Cat "Modern Hex" trade dress as well as corporate and product identity used herein, are trademarks of Caterpillar and may not be used without permission.

AEXQ3404-00

(Afr-ME, Aus-NZ, China,
CIS, Hong Kong, India,
Indonesia, SE Asia,
Taiwan, Thailand)

