



CAT[®] APP RELEASE NOTES iOS_2.33 | ANDROID_2.33 OCTOBER 2021

CAT[®] APP

24/7 EQUIPMENT MANAGEMENT ON-THE-GO

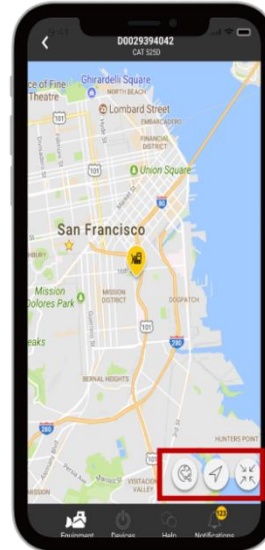
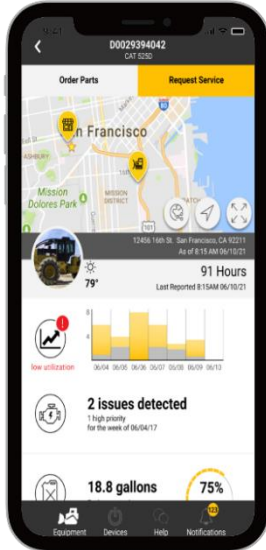
Efficient equipment management starts with the Cat App. Track the location and health of your equipment, order service and parts, and activate telematics devices directly from your mobile device. Staying on top of your fleet 24/7 has never been easier.

WHAT'S NEW

- Updated the Asset Details expanded map to include sharing actions
- Improved the fuel tile experience for Cat Basic and Cat Daily subscriptions
- Removed the microphone from the search bars
- Various bug fixes and performance improvements

NEW FEATURES

ASSET DETAILS EXPANDED MAP ACTIONS



CAT BASIC

CAT DAILY

Basic	
Utilization	Hide
Fault Codes	Hide
Fuel Levels - Modified	Show
Planned Maintenance	Show
Inspect	Show
SOS	Show
Upsell Fuel	Hide
Upsell Subscription	Hide

Proto5/Basic

<Primary Identifier>
<Secondary Identifier>

Order Parts | Request Service

12456 16th St. San Francisco, CA 92211
As of 7:45AM 06/09/20

79°
91 Hours
As of 8:15AM 06/10/20

Equipment Data
Purchase and activate a telematics system today.

75%
Fuel consumed for the week of 06/04/17
As of 12:15AM 06/10/20

Due in 1 Day
Planned Maintenance 01, Planned Maint...

Inspect
Complete Equipment Inspections

S-O-SSM Results
5 samples for the week of 04/04/21

Subscription Information

<Basic>
<Connecting Device + Frequency>
Subscription Upgrade Available

Dealer Information

Cat Bay Area Dealer
10092 King St.
San Francisco, CA 92210

Equipment | Devices | Help | Notifications

Daily	
Utilization	Show
Fault Codes	Show
Fuel Levels - Modified	Show
Planned Maintenance	Show
Inspect	Show
SOS	Show
Upsell Fuel	Hide
Upsell Subscription	Hide

Proto5/Daily

<Primary Identifier>
<Secondary Identifier>

Order Parts | Request Service

12456 16th St. San Francisco, CA 92211
As of 7:45AM 06/09/20

79°
91 Hours
As of 8:15AM 06/10/20

low utilization
06/04 06/05 06/06 06/07 06/08 06/09 06/10

2 issues detected
1 high priority for the week of 06/04/21

18.8 gallons
Fuel consumed for the week of 06/04/17
Fuel Level --

Due in 1 Day
Planned Maintenance 01, Planned Maint...

Inspect
Complete Equipment Inspections

S-O-SSM Results
5 samples for the week of 04/04/21

Subscription Information

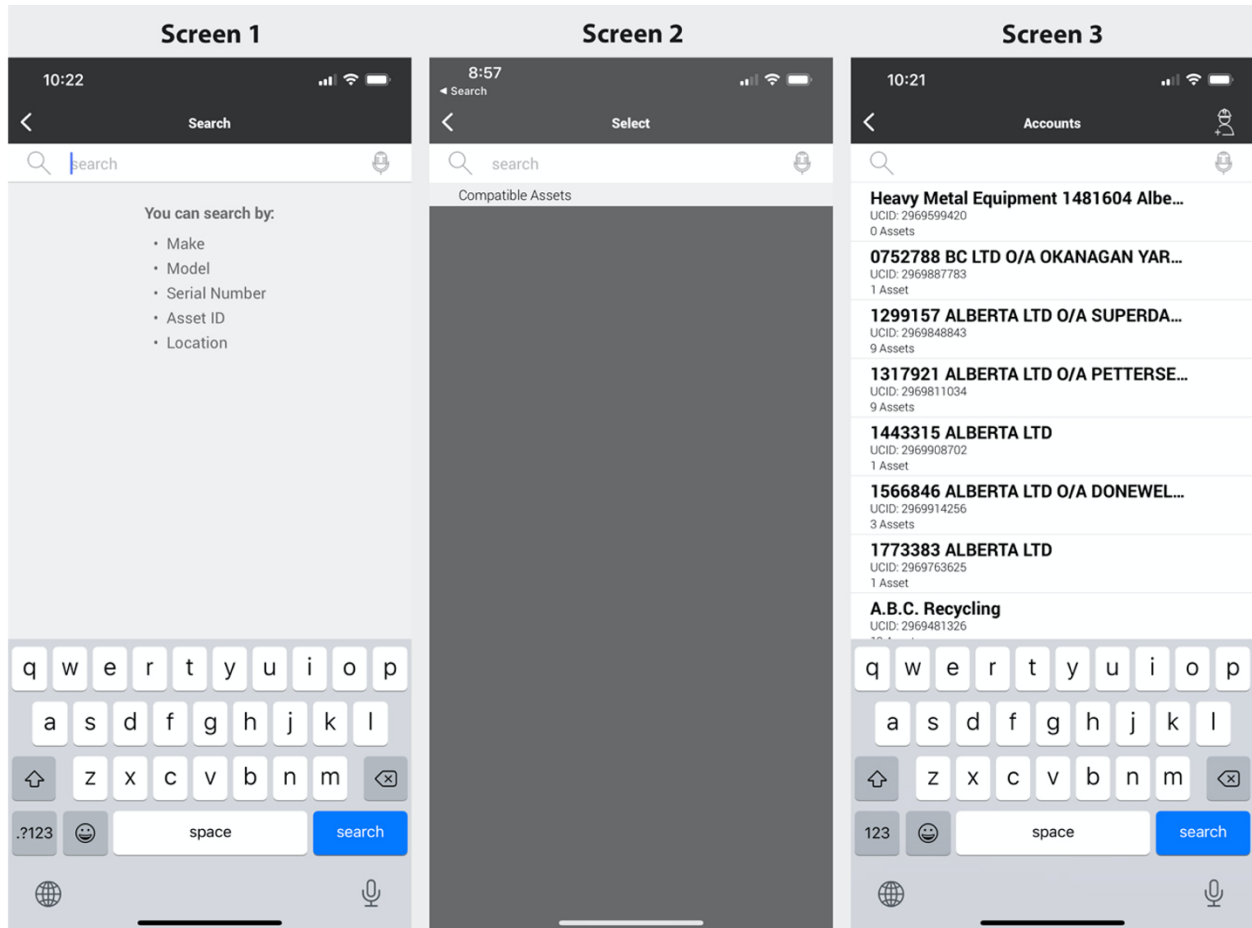
<Daily>
<Connecting Device + Frequency>
Subscription Upgrade Available

Dealer Information

Cat Bay Area Dealer
10092 King St.
San Francisco, CA 92210

Equipment | Devices | Help | Notifications

REMOVING THE MICROPHONE IN THE SEARCH BARS



BUG FIXES

We've addressed the following bug fixes to enhance the overall user experience:

Fix Details	Version	Bug Number
Android - B2C - Login Error message on cancel B2C screen after token expire	2.33	488756
Android - DCV - PM - Dealer PMs are allowing enrollment	2.33	484941
Android - DemoMode_Incorrect First line text in Entry Screen	2.33	487872
Android - DemoMode_Third Asset address in asset list is appeared as "unknown".	2.33	496077
Android - Filter tile not functional when clicked on text	2.33	497977
Android - On Instruction screen, "Next" button displayed rather than "Got It" and "Install Complete" button	2.33	476063
Android - PL542Activation_Mismatch in Header text for "Scan QR/Record info screen" OR "Assign Screen" on both the platforms(Android, IOS)	2.33	472685
Android - Preferences - Grey text does not turn black after enable Scanning	2.33	503584
iOS - CAT Loader - Animation freezes when navigating preferences while CAT loader is present	2.33	491665
IOS - Demo Mode_Search Result Text is displayed twice on header	2.33	487871
IOS - DemoMode_Asset Address appeared "Asset Location Unknown" upon searching specific asset	2.33	496073
iOS - Gear menu - can slide gear menu out on fleet list, asset detail and other screens	2.33	495346
IOS - PL542Activation_Mismatch in details displayed on asset tile for select compatible Asset Screen and on Scan QR /Record info screen	2.33	473721