



# 320

## Hydraulic Excavator

# Technical Specifications

Configurations and features may vary by region. Please consult your Cat® dealer for availability in your area.

## Table of Contents

<b>Specifications</b> .....	<b>2</b>
Engine .....	2
Swing Mechanism .....	2
Weights .....	2
Track .....	2
Drive .....	2
Hydraulic System .....	2
Service Refill Capacities .....	2
Standards .....	2
Sound Performance .....	2
Operating Weights and Ground Pressures .....	3
Major Component Weights .....	3
Dimensions .....	4
Working Ranges .....	5
Reach Boom Lift Capacities .....	6
Bucket Specifications and Compatibility .....	8
Attachments Offering Guide .....	10
<b>Standard and Optional Equipment</b> .....	<b>12</b>
<b>Dealer Installed Kit and Attachments</b> .....	<b>14</b>
<b>320 Environmental Declaration</b> .....	<b>15</b>

# 320 Hydraulic Excavator Specifications

## Engine

Engine Model	Cat® C7.1	
Net Power		
ISO 9249	117 kW	157 hp
ISO 9249 (DIN)	159 hp (metric)	
Engine Power		
ISO 14396	118 kW	158 hp
ISO 14396 (DIN)	160 hp (metric)	
Bore	105 mm	4 in
Stroke	135 mm	5 in
Displacement	7.01 L	428 in <sup>3</sup>
Biodiesel capability	Up to B20 <sup>(1)</sup>	

- Meets Brazil MAR-1, equivalent to U.S. EPA Tier 3 and EU Stage IIIA.
- Recommended for use up to 4500 m (14,760 ft) altitude with engine power derate above 3000 m (9,840 ft).
- Advertised power is tested per the specified standard in effect at the time of manufacture.
- Net power advertised is the power available at the flywheel when the engine is equipped with fan, air intake system, exhaust system and alternator.
- Engine speed at 1,800 rpm.

<sup>(1)</sup>Cat engines are compatible with diesel fuel blended with the following lower-carbon intensity fuels\*\* up to:

- ✓ 100% biodiesel FAME (fatty acid methyl ester)\*
- ✓ 100% renewable diesel, HVO (hydrogenated vegetable oil) and GTL (gas-to-liquid) fuels

Refer to guidelines for successful application. Please consult your Cat dealer or “Caterpillar Machine Fluids Recommendations” (SEBU6250) for details.

\*For use of blends higher than 20% biodiesel, consult your Cat dealer.

\*\*Tailpipe greenhouse gas emissions from lower-carbon intensity fuels are essentially the same as traditional fuels.

## Swing Mechanism

Swing Speed	11.25 rpm	
Maximum Swing Torque	82 kN·m	60,300 lbf·ft

## Weights

Operating Weight	21 600 kg	47,600 lb
------------------	-----------	-----------

- Reach boom 5.7 m (18'8"), R2.9 (9'6") stick, 1.19 m<sup>3</sup> (1.56 yd<sup>3</sup>) Heavy Duty (HD) bucket, 600 mm (24 in) triple grouser shoes, and 4.2 mt (9,260 lb) counterweight.

## Track

Standard Track Shoes Width	600 mm	24 in
Optional Track Shoes Width	700 mm	28 in
Number of Shoes (each side)	49	
Number of Track Rollers (each side)	8	
Number of Carrier Rollers (each side)	2	

## Drive

Gradeability	35°/70%	
Maximum Travel Speed	5.7 km/h	3.5 mph
Maximum Drawbar Pull – Long Undercarriage	205 kN	45,996 lbf

## Hydraulic System

Main System – Maximum Flow – Implement	429 L/min (215 × 2 pumps)	113 gal/min (57 × 2 pumps)
Maximum Pressure – Equipment – Normal	35 000 kPa	5,075 psi
Maximum Pressure – Equipment – Heavy Lift Mode/Auto Dig Boost	38 000 kPa	5,510 psi
Maximum Pressure – Travel	34 300 kPa	4,974 psi
Maximum Pressure – Swing	27 500 kPa	3,998 psi
Boom Cylinder – Bore	120 mm	5 in
Boom Cylinder – Stroke	1260 mm	50 in
Stick Cylinder – Bore	140 mm	6 in
Stick Cylinder – Stroke	1504 mm	59 in
Bucket Cylinder – Bore	120 mm	5 in
Bucket Cylinder – Stroke	1104 mm	43 in

## Service Refill Capacities

Fuel Tank Capacity	345 L	86.6 gal
Cooling System	25 L	6.6 gal
Engine Oil	25 L	6.6 gal
Swing Drive	6 L	1.6 gal
Final Drive (each)	4 L	1.1 gal
Hydraulic System (including tank)	234 L	61.8 gal
Hydraulic Tank	115 L	30.4 gal

## Standards

Brakes	ISO 10265:2008
Cab/Rollover Protective Structure (ROPS)	ISO 12117-2:2008
Operator Protective Guards (OPG) (optional)	ISO 10262:1998 Level II

## Sound Performance

ISO 6395:2008 (external)	100 dB(A)
ISO 6396:2008 (inside cab)	70 dB(A)

- Hearing protection may be needed when operating with an open operator station and cab (when not properly maintained or doors/windows open) for extended periods or in a noisy environment.

# 320 Hydraulic Excavator Specifications

## Operating Weights and Ground Pressures

	600 mm (24 in) Triple Grouser Shoes		700 mm (28 in) Triple Grouser Shoes	
	Weight	Ground Pressure	Weight	Ground Pressure
<b>Base Machine Configurations</b>				
<b>Base Frame with Track Rollers and Carrier Rollers</b>				
<b>4.2 mt (9,260 lb) Counterweight + Long Undercarriage Base Machine</b>				
Reach Boom + R2.9 (9'6") Stick + 1.19 m <sup>3</sup> (1.56 yd <sup>3</sup> ) HD Bucket	21 600 kg	47,600 lb	44.9 kPa 6.5 psi	22 000 kg 48,500 lb 39.2 kPa 5.7 psi

All operating weights include a 90% fuel tank with 75 kg (165 lb) operator.

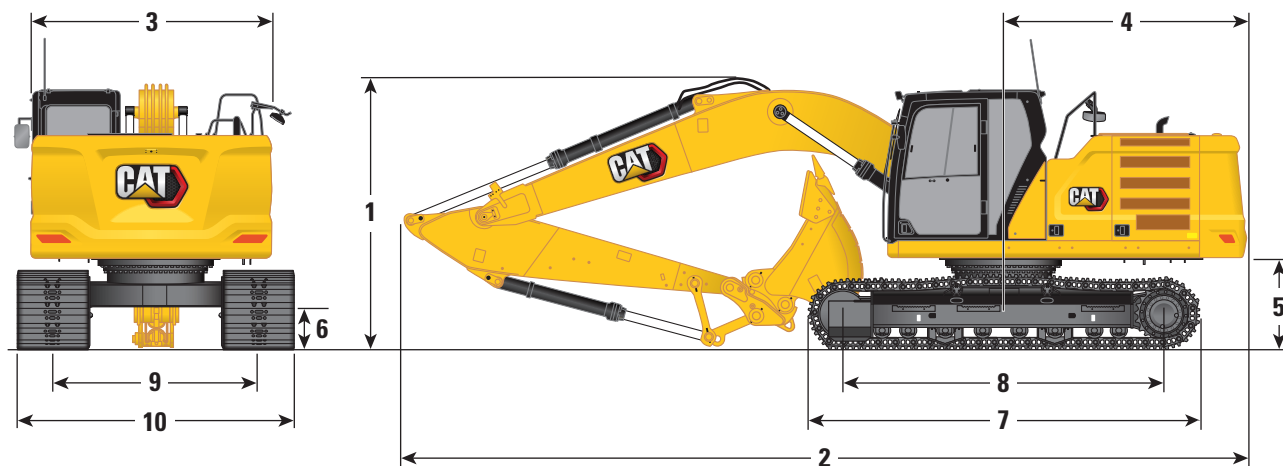
## Major Component Weights

	kg	lb
Base Machine (with 4.2 mt [9,260 lb] counterweight, semi-HD swing frame, standard base frame with HD track rollers and standard carrier rollers for long undercarriage – does not include boom, stick, bucket, boom cylinders, stick cylinder, bucket cylinder, tracks, 90% fuel tank and 75 kg [165 lb] operator)	14 540	32,050
Track Shoes:		
600 mm (24 in) Width, 10 mm (0.39 in) Thick Triple Grouser Track Shoes	2690	5,930
700 mm (28 in) Width, 10 mm (0.39 in) Thick Triple Grouser Track Shoes	3050	6,720
Two Boom Cylinders	340	750
Weight of 90% Fuel Tank and 75 kg (165 lb) Operator	310	680
Counterweight:		
4.2 mt (9,260 lb) Counterweight	4200	9,260
Swing Frame:		
Semi-HD Swing Frame	1910	4,210
Undercarriage:		
Standard Base Frame with HD Track Rollers and Standard Carrier Rollers	4390	9,680
Boom (including lines, pins, stick cylinder):		
Reach Boom 5.7 m (18'8")	1710	3,770
Stick (including lines, pins, bucket cylinder, bucket linkage):		
Reach Stick R2.9B1 (9'6")	1080	2,400
Bucket (without linkage):		
1.19 m <sup>3</sup> (1.56 yd <sup>3</sup> ) HD	940	2,080
Quick Couplers (QC):		
Universal QC	230	500
Pin Grabber QC	390	860

# 320 Hydraulic Excavator Specifications

## Dimensions

All dimensions are approximate and may vary depending on bucket selection.



### Boom Options

Reach Boom  
5.7 m (18'8")

### Stick Options

Reach Stick  
R2.9B1 (9'6")

#### 1 Machine Height:

Top of Cab Height	2960 mm	9'9"
Top of GNSS Antenna Height (if installed)	3000 mm	9'10"
Top of OPG Height	3100 mm	10'2"
Handrail Height	2950 mm	9'8"
With Boom/Stick/Bucket Installed	3160 mm	10'4"
With Boom/Stick Installed	2910 mm	9'7"
With Boom Installed	2480 mm	8'2"

#### 2 Machine Length:

With Boom/Stick/Bucket Installed	9530 mm	31'3"
With Boom/Stick Installed	9500 mm	31'2"
With Boom Installed	8450 mm	27'9"

#### 3 Upperframe Width

2780 mm	9'1"
---------	------

#### 4 Tail Swing Radius

2830 mm	9'3"
---------	------

#### 5 Counterweight Clearance

1050 mm	3'5"
---------	------

#### 6 Ground Clearance

470 mm	1'7"
--------	------

#### 7 Track Length

4450 mm	14'7"
---------	-------

#### 8 Length to Center of Rollers

3650 mm	12'0"
---------	-------

#### 9 Track Gauge

2380 mm	7'9"
---------	------

#### 10 Undercarriage Width:

600 mm (24 in) Shoes	2980 mm	9'9"
700 mm (28 in) Shoes	3080 mm	10'1"

#### Bucket Type

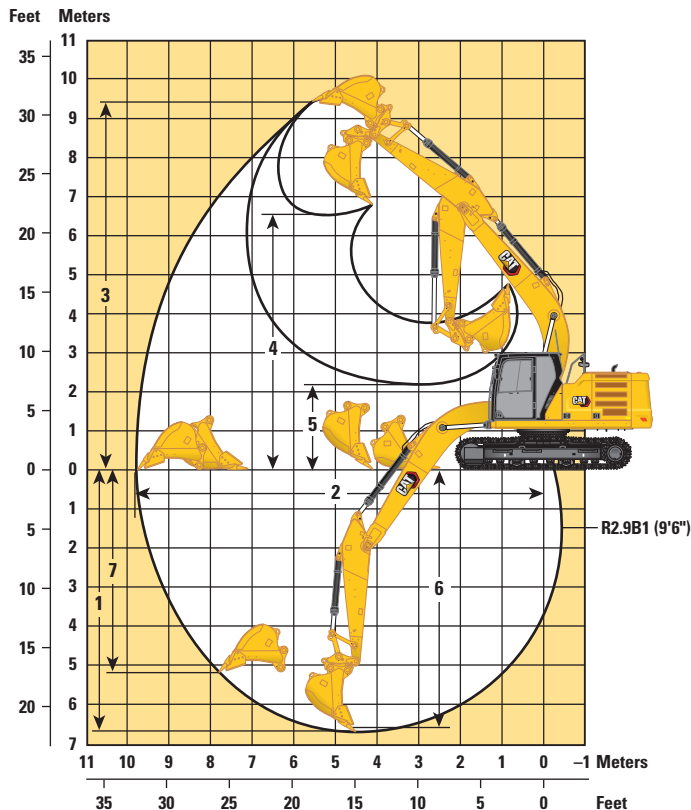
HD

Bucket Capacity	1.19 m <sup>3</sup>	1.56 yd <sup>3</sup>
Bucket Tip Radius	1570 mm	5'2"

# 320 Hydraulic Excavator Specifications

## Working Ranges

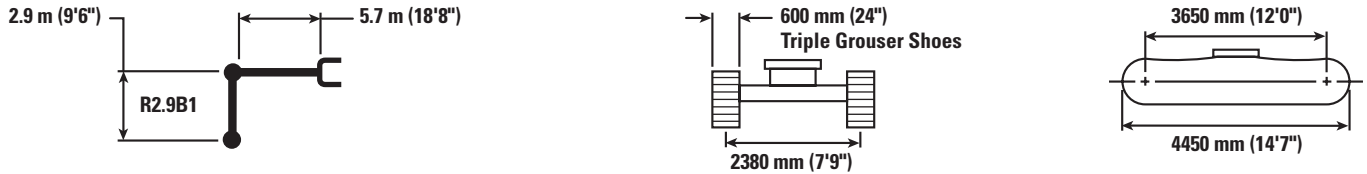
All dimensions are approximate and may vary depending on bucket selection.



Boom Option	Reach Boom 5.7 m (18'8")	
Stick Option	Reach Stick R2.9B1 (9'6")	
1 Maximum Digging Depth	6720 mm	22'1"
2 Maximum Reach at Ground Line	9860 mm	32'4"
3 Maximum Cutting Height	9370 mm	30'9"
4 Maximum Loading Height	6490 mm	21'3"
5 Minimum Loading Height	2170 mm	7'1"
6 Maximum Depth Cut for 2440 mm (8'0") Level Bottom	6550 mm	21'6"
7 Maximum Vertical Wall Digging Depth	5190 mm	17'0"
Bucket Digging Force (ISO)	150 kN	33,811 lbf
Stick Digging Force (ISO)	106 kN	23,911 lbf
Bucket Digging Force (ISO) – Auto Dig Boost	163 kN	36,709 lbf
Stick Digging Force (ISO) – Auto Dig Boost	115 kN	25,960 lbf
Bucket Type	HD	
Bucket Capacity	1.19 m <sup>3</sup>	1.56 yd <sup>3</sup>
Bucket Tip Radius	1570 mm	5'2"

# 320 Hydraulic Excavator Specifications

## Reach Boom Lift Capacities – Counterweight: 4.2 mt (9,260 lb) – without Bucket



		1500 mm/60 in		3000 mm/120 in		4500 mm/180 in		6000 mm/240 in		7500 mm/300 in		mm in		
7500 mm 300 in	kg lb							*4950	*4950			*4300	*4300	6150 240
6000 mm 240 in	kg lb							*5450	5450			*3950	3950	7290 290
4500 mm 180 in	kg lb							*6000	5300	*5650	3750	*3900	3400	7990 320
3000 mm 120 in	kg lb					*8750	7700	*6900	5050	5600	3650	*4000	3100	8360 330
1500 mm 60 in	kg lb					*10 650	7200	7650	4850	5500	3550	*4250	3000	8450 340
0 mm 0 in	kg lb			*6600	*6600	*11 650	6950	7450	4650	5400	3450	*4700	3050	8260 330
-1500 mm -60 in	kg lb	*7050	*7050	*11 400	*11 400	11 700	6850	7400	4600	5350	3450	5100	3300	7780 310
-3000 mm -120 in	kg lb	*12 100	*12 100	*15 600	13 350	*11 000	6900	7400	4650			6050	3850	6950 280
-4500 mm -180 in	kg lb			*12 500	*12 500	*9000	7100					*6800	5250	5600 220
				*26,700	*26,700	*19,100	15,300					*14,950	11,850	



ISO 10567:2007



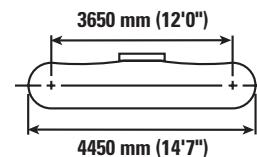
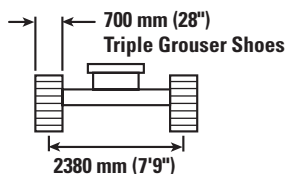
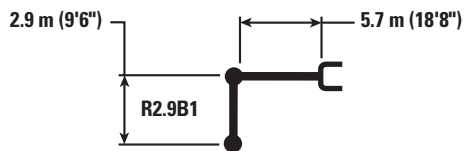
\*Indicates that the load is limited by hydraulic lifting capacity rather than tipping load. The above loads are in compliance with hydraulic excavator lift capacity standard ISO 10567:2007. They do not exceed 87% of hydraulic lifting capacity or 75% of tipping load. Weight of all lifting accessories must be deducted from the above lifting capacities. Lifting capacities are based on the machine standing on a firm, uniform supporting surface. The use of a work tool attachment point to handle/lift objects, could affect the machine lift performance.

Lift capacity stays with ±5% for all available track shoes.

Always refer to the appropriate Operation and Maintenance Manual for specific product information.

# 320 Hydraulic Excavator Specifications

## Reach Boom Lift Capacities – Counterweight: 4.2 mt (9,260 lb) – without Bucket



		1500 mm/60 in		3000 mm/120 in		4500 mm/180 in		6000 mm/240 in		7500 mm/300 in		mm in		
7500 mm 300 in	kg lb							*4950	*4950			*4300 *9,500	*4300 *9,500	6150 240
6000 mm 240 in	kg lb							*5450 *12,000	*5450 11,750			*3950 *8,750	*3950 *8,750	7290 290
4500 mm 180 in	kg lb							*6000 *13,050	5350 11,450	*5650 12,400	3800 8,100	*3900 *8,550	3400 7,550	7990 320
3000 mm 120 in	kg lb					*8750 *18,900	7750 16,700	*6900 *14,950	5100 11,000	5650 12,150	3700 7,900	*4000 *8,750	3150 6,900	8360 330
1500 mm 60 in	kg lb					*10 650 *22,950	7250 15,650	7750 16,600	4900 10,500	5550 11,900	3600 7,700	*4250 *9,300	3000 6,650	8450 340
0 mm 0 in	kg lb			*6600 *15,150	*6600 *15,150	*11 650 *25,200	7000 15,050	7550 16,200	4700 10,150	5450 11,700	3500 7,500	*4700 *10,300	3050 6,750	8260 330
-1500 mm -60 in	kg lb	*7050 *15,750	*7050 *15,750	*11 400 *25,850	*11 400 *25,850	*11 750 25,250	6950 14,900	7450 16,050	4650 10,000	5400 11,650	3450 7,450	5150 11,350	3300 7,300	7780 310
-3000 mm -120 in	kg lb	*12 100 *27,100	*12 100 *27,100	*15 600 *33,800	13 450 28,800	*11 000 *23,800	7000 15,000	7500 16,100	4650 10,050			6100 13,500	3900 8,600	6950 280
-4500 mm -180 in	kg lb			*12 500 *26,700	*12 500 *26,700	*9000 *19,100	7200 15,450					*6800 *14,950	5300 11,950	5600 220



ISO 10567:2007



\*Indicates that the load is limited by hydraulic lifting capacity rather than tipping load. The above loads are in compliance with hydraulic excavator lift capacity standard ISO 10567:2007. They do not exceed 87% of hydraulic lifting capacity or 75% of tipping load. Weight of all lifting accessories must be deducted from the above lifting capacities. Lifting capacities are based on the machine standing on a firm, uniform supporting surface. The use of a work tool attachment point to handle/lift objects, could affect the machine lift performance.

Lift capacity stays with ±5% for all available track shoes.

Always refer to the appropriate Operation and Maintenance Manual for specific product information.

# 320 Hydraulic Excavator Specifications

## Bucket Specifications and Compatibility

	Linkage	Width		Capacity		Weight		Fill	4.2 mt (9,260 lb) Counterweight
		mm	in	m <sup>3</sup>	yd <sup>3</sup>	kg	lb		%
<b>Pin-On (No Quick Coupler)</b>									
Utility Duty	B	600	24	0.39	0.51	503	1,108	100	●
	B	900	36	0.65	0.84	613	1,351	100	●
	B	1200	48	0.95	1.24	733	1,615	100	●
General Duty	B	600	24	0.46	0.60	550	1,212	100	●
	B	750	30	0.64	0.84	621	1,368	100	●
	B	1000	39	0.93	1.22	717	1,580	100	●
	B	1050	42	1.00	1.31	737	1,624	100	●
	B	1050	42	1.00	1.31	737	1,624	100	●
	B	1200	48	1.19	1.56	807	1,778	100	⊙
	B	1400	55	1.43	1.87	874	1,926	100	X
Heavy Duty	B	600	24	0.46	0.61	635	1,400	100	●
	B	750	30	0.64	0.84	737	1,625	100	●
	B	900	36	0.81	1.06	818	1,804	100	●
	B	1050	42	1.00	1.31	872	1,923	100	●
	B	1200	48	1.19	1.56	929	2,048	100	⊙
	B	1350	54	1.38	1.81	1036	2,284	100	X
Cleanup	B	1800	72	1.60	2.09	979	2,157	100	○
	B	2000	78	1.76	2.31	1045	2,303	100	○
	B	2000	78	1.76	2.31	1045	2,303	100	○
Ditch Cleaning Tilt	B	1800	72	1.40	1.83	1105	2,437	100	○
Maximum load with pin-on (payload + bucket)								kg	3010
								lb	6,636

The above loads are in compliance with hydraulic excavator standard EN474-5:2006+A3:2013, they do not exceed 87% of hydraulic lifting capacity or 75% of tipping capacity with front linkage fully extended at ground line with bucket curled.

Capacity based on ISO 7451:2007.

Bucket weight with General Duty tips.

### Maximum Material Density:

- 2100 kg/m<sup>3</sup> (3,500 lb/yd<sup>3</sup>)
- ⊙ 1800 kg/m<sup>3</sup> (3,000 lb/yd<sup>3</sup>)
- 1200 kg/m<sup>3</sup> (2,000 lb/yd<sup>3</sup>)
- ◇ 900 kg/m<sup>3</sup> (1,500 lb/yd<sup>3</sup>)
- X Not Recommended

Caterpillar recommends using appropriate work tools to maximize the value customers receive from our products. Use of work tools, including buckets, which are outside of Caterpillar's recommendations or specifications for weight, dimensions, flows, pressures, etc. may result in less-than-optimal performance, including but not limited to reductions in production, stability, reliability, and component durability. Improper use of a work tool resulting in sweeping, prying, twisting and/or catching of heavy loads will reduce the life of the boom and stick.

(continued on next page)



# 320 Hydraulic Excavator Specifications

## Bucket Specifications and Compatibility *(continued)*

	Linkage	Width		Capacity		Weight		Fill	4.2 mt (9,260 lb) Counterweight
		mm	in	m <sup>3</sup>	yd <sup>3</sup>	kg	lb		%
								R2.9 (9'6")	
<b>With Cat Pin Grabber Coupler</b>									
Utility Duty	B	600	24	0.39	0.51	503	1,108	100	●
	B	900	36	0.65	0.84	613	1,351	100	●
	B	1200	48	0.95	1.24	733	1,615	100	●
General Duty	B	600	24	0.46	0.60	550	1,212	100	●
	B	750	30	0.64	0.84	621	1,368	100	●
	B	1,000	39	0.93	1.22	717	1,580	100	●
	B	1,050	42	1.00	1.31	737	1,624	100	⊙
	B	1,050	42	1.00	1.31	737	1,624	100	⊙
	B	1,200	48	1.19	1.56	807	1,778	100	⊖
	B	1,400	55	1.43	1.87	874	1,926	100	○
	B	1,500	60	1.58	2.06	914	2,014	100	◇
	Heavy Duty	B	600	24	0.46	0.61	635	1,400	100
B		750	30	0.64	0.84	737	1,625	100	●
B		900	36	0.81	1.06	818	1,804	100	●
B		1,050	42	1.00	1.31	872	1,923	100	⊙
B		1,200	48	1.19	1.56	929	2,048	100	⊖
B		1,350	54	1.38	1.81	1036	2,284	100	○
B		1,500	60	1.58	2.06	1094	2,412	100	◇
Cleanup	B	1,800	72	1.60	2.09	979	2,157	100	◇
	B	2,000	78	1.76	2.31	1045	2,303	100	◇
	B	2,000	78	1.76	2.31	1045	2,303	100	◇
Maximum load with coupler (payload + bucket)								kg	2636
								lb	5,811

The above loads are in compliance with hydraulic excavator standard EN474-5:2006+A3:2013, they do not exceed 87% of hydraulic lifting capacity or 75% of tipping capacity with front linkage fully extended at ground line with bucket curled.

Capacity based on ISO 7451:2007.

Bucket weight with General Duty tips.

### Maximum Material Density:

- 2100 kg/m<sup>3</sup> (3,500 lb/yd<sup>3</sup>)
- ⊙ 1800 kg/m<sup>3</sup> (3,000 lb/yd<sup>3</sup>)
- ⊖ 1500 kg/m<sup>3</sup> (2,500 lb/yd<sup>3</sup>)
- 1200 kg/m<sup>3</sup> (2,000 lb/yd<sup>3</sup>)
- ◇ 900 kg/m<sup>3</sup> (1,500 lb/yd<sup>3</sup>)

Caterpillar recommends using appropriate work tools to maximize the value customers receive from our products. Use of work tools, including buckets, which are outside of Caterpillar's recommendations or specifications for weight, dimensions, flows, pressures, etc. may result in less-than-optimal performance, including but not limited to reductions in production, stability, reliability, and component durability. Improper use of a work tool resulting in sweeping, prying, twisting and/or catching of heavy loads will reduce the life of the boom and stick.

# 320 Hydraulic Excavator Specifications

## Attachments Offering Guide

Not all Attachments are available in all regions. Consult your Cat dealer for configurations available in your region.

Match
  \* Working range front only
  † Allowed usage on machine less than 50%

### PIN-ON ATTACHMENTS

Counterweight		4.2 mt (9,260 lb)
Boom Type		Reach
Stick Length		R2.9 (9'6")
Hydraulic Hammers	H115 S	✓
	H120 GC	✓
	H120 GC S	✓
	H120 S	✓
	H130 GC	✓
	H130 S	✓†
Demolition and Sorting Grapples	G318	✓
Mobile Scrap and Demolition Shears	S3025 Flat Top	✓
Mulchers	HM4015	✓
	HM4815	✓
Compactors (Vibratory Plate)	CVP110	✓
Rotary Cutters	RC20	✓

### CAT PIN GRABBER COUPLER ATTACHMENTS

Counterweight		4.2 mt (9,260 lb)
Boom Type		Reach
Stick Length		R2.9 (9'6")
Hydraulic Hammers	H115 S	✓
	H120 GC	✓†
	H120 GC S	✓†
	H120 S	✓†
	H130 GC	✓†*
	H130 GC S	✓†
	H130 S	✓†
Demolition and Sorting Grapples	G318	✓
Mobile Scrap and Demolition Shears	S3025 Flat Top	✓*
Mulchers	HM4015	✓
	HM4815	✓
Compactors (Vibratory Plate)	CVP110	✓
Rotary Cutters	RC20	✓

(continued on next page)

# 320 Hydraulic Excavator Specifications

## Attachments Offering Guide *(continued)*

Not all Attachments are available in all regions. Consult your Cat dealer for configurations available in your region.

Match
  \* Working range front only
  † Allowed usage on machine less than 50%

### TRS18 (PIN-ON TOP/S70 BOTTOM) ATTACHMENTS

Some attachments require more hydraulic flow and are best suited with a machine that has HP2 circuits and a tiltrotator with a high flow swivel. Check the hydraulic capability of your machine and tiltrotator and the requirements of your attachment to ensure a proper match.

<b>Counterweight</b>		<b>4.2 mt (9,260 lb)</b>
<b>Boom Type</b>		<b>Reach</b>
<b>Stick Length</b>		<b>R2.9 (9'6")</b>
Hydraulic Hammers	H115 S	✓
	H120 GC S	✓†
	H120 S	✓†
Compactors (Vibratory Plate)	CVP75	✓
	CVP110	✓

**NOTE:** Use hammers on tiltrotators less than 10% of working hours per year or maximum 200 hours per year. Refer to your Operation and Maintenance Manual for recommended hydraulic flow requirements.

### BOOM-MOUNT ATTACHMENTS

<b>Counterweight</b>		<b>4.2 mt (9,260 lb)</b>
<b>Boom Type</b>		<b>Reach</b>
Mobile Scrap and Demolition Shears	S3035 Flat Top	✓

# 320 Standard and Optional Equipment

## Standard and Optional Equipment

Standard and optional equipment may vary. Consult your Cat dealer for details.

	Standard	Optional		Standard	Optional
<b>BOOM, STICKS AND LINKAGES</b>			<b>CAT TECHNOLOGY</b>		
5.7 m (18'8") Reach boom	✓		VisionLink®	✓	
2.9 m (9'6") Reach stick	✓		VisionLink Productivity		✓
Bucket linkage, B1-family with lifting eye	✓		Remote Flash	✓	
<b>CAB</b>			Remote Troubleshoot	✓	
ROPS	✓		Cat Grade Connectivity		✓
High-resolution 203 mm (8") LCD touchscreen monitor	✓		Compatibility with radios and base stations from Trimble, Topcon, and Leica	✓	
High-resolution 254 mm (10") LCD touchscreen monitor		✓	Capability to install 3D grade systems from Trimble, Topcon, and Leica	✓	
Auto bi-level air conditioner	✓		Cat Grade 2D		✓
Jog dial and shortcut keys for monitor control	✓		Cat Grade 2D with Attachment Ready Option (ARO)	✓	
Keyless push-to-start engine control	✓		Cat Grade 3D single GNSS		✓
Height-adjustable console	✓		Cat Grade 3D dual GNSS		✓
Tilt-up left-side console	✓		Laser catcher		✓
Heated air-suspension seat	✓		Cat Assist:	✓	
51 mm (2") seat belt	✓		– Grade Assist		
Monitor integrated Bluetooth® radio with USB/Auxiliary ports	✓		– Boom Assist		
12V DC outlets	✓		– Bucket Assist		
Document storage	✓		– Swing Assist		
Overhead storage and rear storage with nets	✓		– Lift Assist		
Beverage holder	✓		Cat Payload:	✓	
Cup holder	✓		– Static weigh		
Openable two-piece front window	✓		– Semiautomatic calibration		
Rear window emergency exit	✓		– Payload/cycle information		
Radial wiper with washer	✓		– USB reporting capability		
Openable polycarbonate skylight hatch	✓		Work tool recognition (PL161)	✓	
LED dome light	✓		Work tool tracking (PL161)	✓	
Floor welcome light	✓		Cat Tilt Rotator (TRS) Integration		✓
Roof sunscreen	✓		Operator Coaching		✓
Roller front sunscreen	✓		<b>ELECTRICAL SYSTEM</b>		
Roller rear sunscreen		✓	1,000 CCA maintenance-free batteries (×2)	✓	
Washable floor mat	✓		Centralized electrical disconnect switch	✓	
Beacon ready	✓		Programmable time-delay LED working lights	✓	
Cat Stick Steer		✓	LED chassis light, left-hand and right-hand boom lights, cab lights	✓	
Auxiliary relay		✓	Premium surround lighting package		✓

\*Connect subscription only. Additional subscriptions are available. Contact your Cat dealer for availability.

(continued on next page)

## Standard and Optional Equipment (continued)

Standard and optional equipment may vary. Consult your Cat dealer for details.

	Standard	Optional		Standard	Optional
<b>ENGINE</b>			<b>SAFETY AND SECURITY</b>		
Cat® C7.1 single turbo diesel engine	✓		Cat Command (remote control)		✓
Three selectable power modes	✓		2D E-Fence:	✓	
Auto engine speed control	✓		– E-ceiling		
Auto engine idle shutdown	✓		– E-floor		
Work up to 3000 m (9,840 ft) above sea level without engine power de-rating	✓		– E-swing		
52° C (125° F) high-ambient cooling capacity	✓		– E-wall		
Starting capability for –18° C (0° F) with jump start receptacle	✓		– E-cab avoidance		
Double element air filter with integrated pre-cleaner	✓		Auto hammer stop	✓	
Electric fuel priming pump	✓		Rearview and right-hand-sideview cameras	✓	
Electric cooling fans with auto-reverse function	✓		Neutral lever (lock out) for all controls	✓	
<b>HYDRAULIC SYSTEM</b>			Anti-skid plate and countersunk bolts on service platform	✓	
Boom and stick regeneration circuits	✓		Ground-level accessible secondary engine shutoff switch in cab	✓	
Boom and stick lowering check valves	✓		Lockable disconnect switch	✓	
Electronic main control valve	✓		Swing alarm		✓
Auto Dig Boost	✓		Right-hand handrail and handhold	✓	
Auto heavy lift	✓		Travel alarm	✓	
Auto warm up	✓		Inspection lighting		✓
Auto two-speed travel	✓		<b>SERVICE AND MAINTENANCE</b>		
Boom and stick drift reduction valve	✓		Scheduled Oil Sampling (S-O-S <sup>SM</sup> ) ports	✓	
Element type main hydraulic filter	✓		QuickEvac™ maintenance ready		✓
Slider joysticks	✓		Grouped location for engine oil and fuel filters	✓	
Tandem type electronic main pump	✓		Ground-level second dipstick for engine oil	✓	
Hammer return filter circuit		✓	Radiator screen		✓
Hydraulic efficiency monitoring		✓	Integrated vehicle health management system	✓	
Tool Control (two pump, one/two way high-pressure flow)		✓	<b>UNDERCARRIAGE AND STRUCTURES</b>		
Medium pressure auxiliary circuit		✓	600 mm (24") triple grouser track shoes	✓	
Quick coupler circuit for Cat Pin Grabber and CW Dedicated		✓	700 mm (28") triple grouser track shoes		✓
			Tie-down points on base frame	✓	
			Segmented track guiding guards	✓	
			Full-length track guiding guards		✓
			Bottom guards	✓	
			HD bottom guards		✓
			Swivel guard	✓	
			Travel motor guards	✓	
			HD travel motor guards		✓
			Grease lubricated track links	✓	
			4.2 mt (9,260 lb) counterweight	✓	

## Dealer Installed Kit and Attachments

Attachments may vary. Consult your Cat dealer for details.

### CAB

- Lower radial wiper
- Rain protector plus cab light cover
- Laminated P5A glass front windshield
- Left-hand/Right-hand electrical pedal for tool control
- Armrest kit
- Seat with 4-point seatbelt capability
- Dual exit rear window kit
- 75 mm (3") retractable seat belt
- Auxiliary relay

### ELECTRICAL

- Premium surround working lights

### GUARDS

- Swivel guard
- Side rubber bumper guard
- Operator Protective Guards
- Mesh guard full front
- Mesh guard half front
- Full protecting vandalism guard

### MAINTENANCE

- Jump start wiring
- Duct ready kit

### SAFETY AND SECURITY

- Cat Detect – People Detection
- Cat Command – Remote control kit
- Seat belt indicator
- Bluetooth receiver
- Bluetooth key fob

### OTHER ATTACHMENTS

- Delayed engine shutdown kit
- Upper cover for antennae
- Removable mast for antennae
- Power clam kit
- Grease gun holder

The following information applies to the machine at the time of final manufacture as configured for sale in the regions covered in this document. The content of this declaration is valid as of the date issued; however, content related to machine features and specifications are subject to change without notice. For additional information, please see the machine's Operation and Maintenance Manual.

For more information on sustainability in action and our progress, please visit <https://www.caterpillar.com/en/company/sustainability>.

## Engine

- The Cat® C7.1 engine meets Brazil MAR-1 emission standards, equivalent to U.S. EPA Tier 3 and EU Stage IIIA.
- Cat engines are compatible with diesel fuel blended with the following lower-carbon intensity fuels\*\* up to:
  - ✓ 100% biodiesel FAME (fatty acid methyl ester)\*
  - ✓ 100% renewable diesel, HVO (hydrogenated vegetable oil) and GTL (gas-to-liquid) fuels

Refer to guidelines for successful application. Please consult your Cat dealer or "Caterpillar Machine Fluids Recommendations" (SEBU6250) for details.

*\*For use of blends higher than 20% biodiesel, consult your Cat dealer.*

*\*\*Tailpipe greenhouse gas emissions from lower-carbon intensity fuels are essentially the same as traditional fuels.*

## Air Conditioning System

- The air conditioning system on this machine contains the fluorinated greenhouse gas refrigerant R134a (Global Warming Potential = 1430). The system contains 0.85 kg (1.9 lb) of refrigerant which has a CO<sub>2</sub> equivalent of 1.216 metric tonnes (1.340 tons).

## Paint

- Based on best available knowledge, the maximum allowable concentration, measured in parts per million (PPM), of the following heavy metals in paint are:
  - Barium < 0.01%
  - Cadmium < 0.01%
  - Chromium < 0.01%
  - Lead < 0.01%

## Sound Performance

ISO 6395:2008 (external) – 100 dB(A)

ISO 6396:2008 (inside cab) – 70 dB(A)

- Hearing protection may be needed when operating with an open operator station and cab (when not properly maintained or doors/windows open) for extended periods or in a noisy environment.

## Oils and Fluids

- Caterpillar factory fills with ethylene glycol coolants. Cat Diesel Engine Antifreeze/Coolant (DEAC) and Cat Extended Life Coolant (ELC) can be recycled. Consult your Cat dealer for more information.
- Cat Bio HYDO™ Advanced is an EU Ecolabel approved biodegradable hydraulic oil.
- Additional fluids are likely to be present, please consult the Operations and Maintenance Manual or the Application and Installation guide for complete fluid recommendations and maintenance intervals.

## Features and Technology

- The following features and technology may contribute to fuel savings and/or carbon reduction. Features may vary. Consult your Cat dealer for details.
  - Advanced hydraulic systems balance power and efficiency
  - Smart mode matches machine power to digging requirements automatically
  - Increase operating efficiency up to 45% with standard Cat technologies
  - Cut maintenance costs with extended service intervals
  - The latest hydraulic oil filter provides longer life with a 3,000-hour replacement interval

For more complete information on Cat products, dealer services, and industry solutions, visit us on the web at [www.cat.com](http://www.cat.com)

© 2023 Caterpillar  
All rights reserved

Materials and specifications are subject to change without notice. Featured machines in photos may include additional equipment. See your Cat dealer for available options.

CAT, CATERPILLAR, LET'S DO THE WORK, their respective logos, "Caterpillar Corporate Yellow," the "Power Edge" and Cat "Modern Hex" trade dress as well as corporate and product identity used herein, are trademarks of Caterpillar and may not be used without permission. VisionLink is a trademark of Caterpillar Inc., registered in the United States and in other countries.

AEXQ3349-02 (10-2023)  
Replaces AEXQ3349-01  
Build Number: 07G  
(Aus-NZ)

