

914K/920K

WHEEL LOADERS



Maximum Gross Power*
Operating Weight
Bucket Capacities

914K
75 kW (100 hp)
8908 kg (19,633 lb)
1.6–3.5 m³ (2.1–4.6 yd³)

920K
75 kW (100 hp)
9141 kg (20,146 lb)
1.6–3.5 m³ (2.1–4.6 yd³)

* Cat® C4.4 Engine meets Brazil MAR-1 emission standards, equivalent to U.S. EPA Tier 3/EU Stage IIIA.



The new Cat® compact wheel loader range is more capable than the previous generation of loaders with more power, more capacity and more customer driven features.

CAT® 914K/920K

CUSTOMER DRIVEN



WHEEL LOADERS MADE FOR MORE

Cat wheel loaders are built with efficiency in mind, offering you the best in:



RELIABILITY



EASE OF MAINTENANCE



DURABILITY



FUEL EFFICIENCY



PRODUCTIVITY

Experience higher performance while reducing overall costs.

PRODUCTIVE RESULTS

WORK SMART AND MOVE MORE



CAT PERFORMANCE SERIES BUCKETS

Carry more and load quicker so each pass is the most efficient it can be. **Rounded side boards, a longer floor and open angle** makes them the best buckets in the business.



OPTIMIZED Z-BAR LOADER LINKAGE

Caterpillar's patented Optimized Z-Bar linkage offers the most efficient choice of both breakout and parallelism for whatever your job requires.

COUPLER OR NO COUPLER

Multiple work tool attachment options are available in Pin-on, Cat IT, and Cat Fusion™ coupler interfaces.

KICKOUTS WITH SNUBBING

Work quicker and more comfortable with **soft catch** tilt and raise kickouts. Adjustable on the go for your changing day.

INTEGRATED TECHNOLOGY

WORKING FOR YOU BEHIND THE SCENES

TILT AND RAISE KICKOUTS WITH SOFT CATCH SNUBBING* FOR OPERATOR COMFORT

Easy, **push to set**, tilt and raise features sets points, making quick work of repetitive cycles.

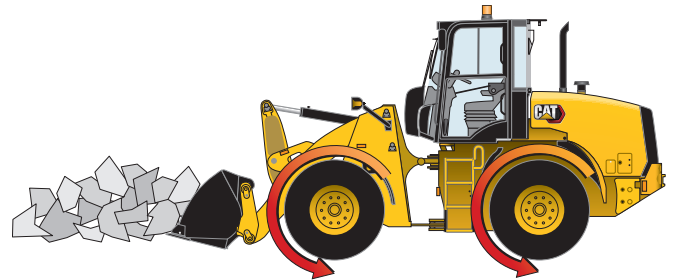
Built in technology, makes work easier with less fatigue on the operator; standard on the 920K.

**Snubbing not available on the 914K.*



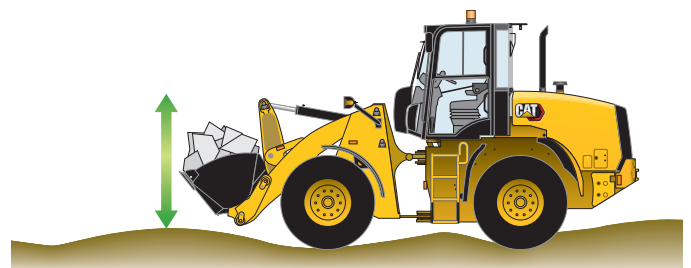
RIMPULL – WHEEL TORQUE CONTROL TO SAVE TIRE LIFE

Rimpull Control is a quick way to adjust the torque to the tires for **less slipping and tire wear**. A push of a button adjusts the power up for dry conditions or down for mud or snow, lowering your overall operating cost.



RIDE CONTROL FOR MATERIAL RETENTION

Ride Control works as a speed sensitive shock absorber for the lift arms, improving **ride quality** over rough terrain, providing better material retention and the best operator comfort option available.



DURABLE DRIVE TRAIN

STANDARD AND OPTIONAL FEATURES FOR EVERY APPLICATION



LOCKING DIFFERENTIALS

Standard dual locking differential axles create maximum traction in multiple ground conditions simply with the press of a joystick button.



LED OR HALOGEN LIGHTS

Start early, finish late with LED or Halogen light packages.



COVERAGE WHERE IT COUNTS

Fender options for all conditions and applications. Basic for general work, full coverage with extended mud flaps for heavy snow or mud work.



DESIGNED TO A HIGHER STANDARD

Cat compact wheel loaders available offerings:

- + LOCKING AXLE DIFFERENTIALS
- + TIRE OPTIONS FOR EVERY APPLICATION , SIZES RANGE FROM 17.5" TIRES UP TO 20.5"
- + CREEP CONTROL FOR LOW MACHINE SPEED AUXILIARY TOOL APPLICATIONS SUCH AS BROOMS OR SNOW TOOLS
- + PRESSURE COMPENSATED LOADER VALVE TO WORK AT A LOWER RPM
- + SPEED ACTIVATED RIDE CONTROL (OPTIONAL)



ENGINE ENCLOSURE

EFFORTLESS SERVICE ACCESS



HYDRAULICS AND CONTROLS

State of the art electro-hydraulic system provides low effort, fine control with fast cycle times. All-in-one joystick helps keep eyes on the work.

PRODUCTIVITY

Efficiently powerful with its high full turn tipping loads, powerful breakout forces and increased engine power, the K Series delivers a balanced solution for all customer applications.



EASY SERVICE

All regular maintenance items are within easy reach making service easier.



FUEL EFFICIENCY

Eco-Mode and an on-demand cooling fan makes the machine both powerful and fuel efficient.

REVERSING FAN

Keep clean and cool with the auto reversing fan option with manual purge if needed.

OPERATOR STATION

FIRST CLASS VISIBILITY, ERGONOMICS AND COMFORT

FULL COLOR DASH AND SWITCHES

Information you need with additional machine features all within reach.



REAR VIEW CAMERA

Keep up with the entire job site with an optional rear view camera.



JOYSTICKS

Options for your work from buckets and forks to complex attachments, with two, three or four valve joysticks.

SECURITY SYSTEM

Prevent unauthorized machine usage with the optional security system.



OPTIONS AT YOUR FINGER TIPS

- 1) Implement Lockout
 - 2) Quick Coupler*
 - 3) Work Tool Electronics*
 - 4) Rear Defrost
 - 5) Rear Wiper
 - 6) Secondary Steering Test Switch*
 - 7) Creep Control*
 - 8) Transmission High/Low**
 - 9) Key Switch
 - 10) HVAC Controls*
 - 11) Reversing Fan*
- * Optional on some configurations
** Only available on 920K



- A Ride Control*
- B Tilt Kickout Set*
- C Raise Kickout Set*
- D Loader Arm Implement Control*
- E Throttle Lock Set/Decelerate*
- F Throttle Lock Resume/Accelerate*
- G Rimpull Control*
- H Transmission Response Control*

* Optional on some configurations

Selectable Hystat **Transmission Response Control** feature lets the operator select one of three modes to match the machine's drive response to the operator's preference, skill level and application requirements.

Selectable **Loader Arm Implement Control** feature has three levels of control that give the operator the ability to adjust the responsiveness and speed of the lift and tilt functions for more aggressive or precise implement control.

CHOOSE YOUR CONFIGURATION

STANDARD AND CUSTOM OPTIONS FOR EVERY APPLICATION

TASK → TOOL → MACHINE = MAXIMUM EFFICIENCY ON YOUR JOB SITE

FEATURE	GENERAL PURPOSE BUCKETS	MULTI PURPOSE BUCKETS	LIGHT MATERIAL BUCKETS	HIGH DUMP BUCKETS	BROOMS	SNOW TOOLS	FORKS	MATERIAL HANDLING ARM	BIG BAG HANDLER	COTTON BALE SPEAR
Loader Arm Responsiveness	✓	✓	✓	✓	✓	✓	✓	✓	✓	✓
Transmission Responsiveness	✓		✓	✓		✓				
Kickouts	✓	✓	✓	✓			✓	✓	✓	✓
Ride Control	✓		✓	✓			✓	✓	✓	✓
Auxiliary Flow		✓		✓	✓	✓				
Continuous Flow					✓					
Rimpull	✓	✓	✓	✓		✓				
Creep Control					✓					

Work Tool availability may vary by region. Please consult your local Cat dealer.



WORK TOOL ATTACHMENTS FOR EVERY JOB



COUPLER OPTIONS FOR IT, ISO AND FUSION



GENERAL PURPOSE BUCKETS



MULTI PURPOSE BUCKETS



LIGHT MATERIAL BUCKETS



HIGH DUMP BUCKETS



ANGLE AND PICKUP BROOMS



SNOW PLOWS



SNOW PUSHES



FORKS



MATERIAL HANDLING ARMS



Auxiliary hydraulics are available in push or screw to connect fittings for your favorite Cat Work Tool Attachment. Electrical tool control from the cab offers unique options when needed.



BIG BAG HANDLER



COTTON BALE SPEAR

CONFIGURED FOR SUCCESS

UNIQUE OPTIONS FOR UNIQUE WORK*



- 1) Crankcase Guard
- 2) Power Train Guard
- 3) Hitch Guard
- 4) Driveshaft Guard
- 5) Headlight Guard
- 6) Reversing Fan*



- 1) Performance Matched Buckets
- 2) Pin-on or Coupler Options
- 3) Tire Options
- 4) Specific Counterweights

*Optional equipment may vary by region. Consult your local Cat dealer.

BIG OPTIONS, COMPACT LOADER



Dedicated configuration packages, suited for your application. When uptime is key, choose options for what your jobsite requires to get the most out of your Cat loader.

REAL-TIME INFORMATION FROM CAT LINK TAKES THE GUESSWORK OUT OF MANAGING YOUR EQUIPMENT

Cat Link hardware (Product Link™) and software (VisionLink®) work together to put equipment information at your fingertips. Get real-time access to information on every machine in your fleet on any jobsite—no matter the size of the operation or the brands of equipment you run.

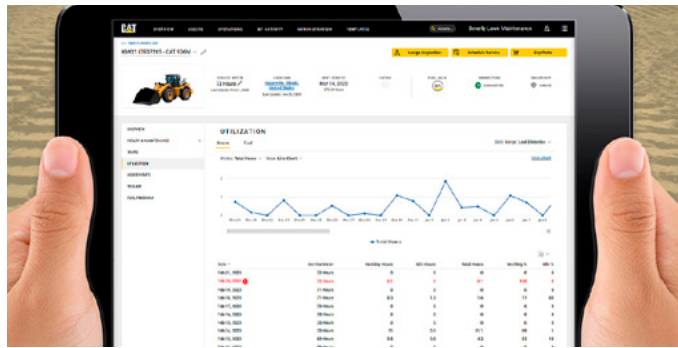


PRODUCT LINK

Track asset location, hours, fuel usage, diagnostic codes, idle time, and more to improve your productivity and lower your operating costs. Cellular connectivity comes standard. Satellite connectivity is available.

VISIONLINK

Using the online VisionLink interface, you can see a common, collective view of your information, making it easier to manage a mixed fleet and make informed decisions.



MY.CAT.COM

You can also access Caterpillar and Cat dealer information at my.cat.com. My.cat.com gives you access to preventative maintenance (PM) schedules, parts and service records, warranty coverage, and more—with a single login. Plus, you can link directly to your VisionLink account.



RENOWNED CAT DEALER SUPPORT

Rely on your Cat dealer to help you every step of the way with new or used machine sales, rental or rebuild options to meet your business needs.



914K/920K Wheel Loaders Specifications

Engine

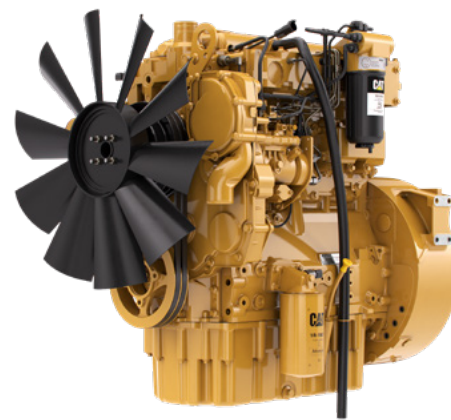
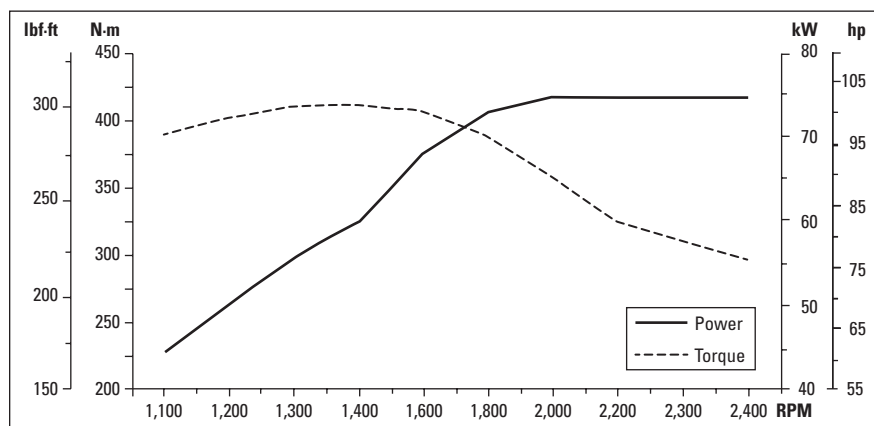
Cat® C4.4	914K		920K	
Maximum Gross Power	2,350 rpm		2,350 rpm	
ISO 14396	75 kW	100 hp	75 kW	100 hp
ISO 14396 (metric)	102 hp		102 hp	
Rated Net Power	2,200 rpm		2,200 rpm	
SAE J1349	73 kW	98 hp	73 kW	98 hp
ISO 9249	74 kW	99 hp	74 kW	99 hp
Maximum Gross Torque				
SAE J1995	415 N·m	306 lbf-ft	415 N·m	306 lbf-ft
ISO 14396	410 N·m	302 lbf-ft	410 N·m	302 lbf-ft
Maximum Net Torque				
SAE J1349	400 N·m	295 lbf-ft	400 N·m	295 lbf-ft
ISO 9249	405 N·m	299 lbf-ft	405 N·m	299 lbf-ft
Displacement	4.4 L	268 in ³	4.4 L	268 in ³
Bore	105 mm	4.13 in	105 mm	4.13 in
Stroke	127 mm	5.00 in	105 mm	5.00 in

Net power ratings are tested at the reference conditions for the specified standard in effect at the time of manufacture.

- Net power advertised is the power available at the flywheel when the engine is equipped with fan, air cleaner, muffler and alternator.
- The Cat C4.4 engine meets Brazil MAR-1 emission standards, equivalent to U.S. EPA Tier 3/EU Stage IIIA.

Engine Torque

914K/920K



914K/920K Wheel Loaders Specifications

Cab



- ROPS: ISO 3471:2008.
- FOPS: ISO 3449:2005 Level II.
- The declared dynamic operator Sound Pressure Level per ISO 6396:2008* is 77 dB(A) with closed doors and windows and the cab properly installed and maintained.
- The declared exterior sound power level is 103 dB(A) when the value is measured according to the dynamic test procedures and the conditions that are specified in ISO 6396:2008.

* Measurements were conducted with the cab doors and windows closed.

Loader Hydraulic System



- 914K and 920K implement system uses a dedicated load sensing variable displacement pump.
- Loader linkage utilizes dual double acting lift cylinders and a single double acting tilt cylinder.

	914K		920K	
Maximum Flow – Implement Pump	148 L/min	39 gal/min	148 L/min	39 gal/min
3 rd Function, Maximum Flow, Standard	95 L/min	25 gal/min	95 L/min	25 gal/min
3 rd Function, Maximum Flow, High	120 L/min	32 gal/min	135 L/min	36 gal/min
4 th Function, Maximum Flow	95 L/min	25 gal/min	95 L/min	25 gal/min
Maximum Working Pressure – Implement Pump	28 000 kPa	4,061 psi	28 000 kPa	4,061 psi
Relief Pressure – Tilt Cylinder	32 000 kPa	4,641 psi	32 000 kPa	4,641 psi
3 rd and 4 th Function Maximum Working Pressure	28 000 kPa	4,061 psi	28 000 kPa	4,061 psi
3 rd and 4 th Function Relief Pressure	25 000 kPa	3,626 psi	32 000 kPa	4,641 psi
Lift Cylinder: Double Acting				
Bore Diameter	100 mm	3.9 in	110 mm	4.3 in
Rod Diameter	60 mm	2.4 in	60 mm	2.4 in
Stroke	593 mm	23.3 in	547 mm	21.5 in
Tilt Cylinder: Double Acting				
Bore Diameter	100 mm	3.9 in	110 mm	4.3 in
Rod Diameter	60 mm	2.4 in	60 mm	2.4 in
Stroke	578 mm	22.8 in	581 mm	22.9 in
Cycle Times				
Raise (ground level to maximum lift)	5.2 seconds		4.8 seconds	
Dump (at maximum lift height)	1.4 seconds		1.8 seconds	
Rack Back	2.2 seconds		2.2 seconds	
Float Down (maximum lift to ground level)	3.7 seconds		2.7 seconds	
Total Cycle Time	12.5 seconds		11.5 seconds	

914K/920K Wheel Loaders Specifications

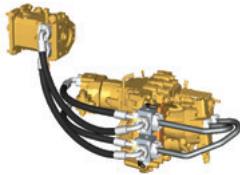
Power Train



- Differential lock can be engaged on the go at full torque up to 2.5 km/h (1.6 mph) and stays active up to 10 km/h (6.3 mph).

	914K	920K
Front Axle	Fixed	Fixed
Traction Aid	Locking differential (std.)	Locking differential (std.)
Rear Axle	Oscillating	Oscillating
Oscillation	± 11°	± 11°
Traction aid	Locking differential (std.)	Locking differential (std.)
Brakes		
Service	Inboard wet disc	Inboard wet disc
Park	Cable applied, spring released	Cable applied, spring released

Transmission



- * Creeper control allows for speed control from a stand still up to 10 km/h (6.3 mph).

	914K		920K	
Forward and Reverse				
Creep Control*	10 km/h	6.3 mph	10 km/h	6.3 mph
Speed Range 1	10 km/h	6.3 mph	10 km/h	6.3 mph
Speed Range 2	20 km/h	12.5 mph	20 km/h	12.5 mph
Speed Range 3	—	—	40 km/h	25 mph

914K/920K Wheel Loaders Specifications

Steering



- 914K and 920K steering system uses a dedicated load sensing variable displacement pump.
- Steering system utilizes dual double acting steering cylinders.

	914K		920K	
Steering Articulation Angle (each direction)	40°		40°	
Steering Cylinder: Double Acting				
Bore Diameter	60 mm	2.4 in	60 mm	2.4 in
Rod Diameter	35 mm	1.4 in	35 mm	1.4 in
Stroke	400 mm	15.7 in	400 mm	15.7 in
Maximum Flow – Steering Pump	82 L/min	22 gal/min	82 L/min	22 gal/min
Maximum Working Pressure – Steering Pump	20 000 kPa	2,901 psi	20 000 kPa	2,901 psi
Maximum Steering Torque				
0° (straight machine)	50 375 N·m	37,155 lbf-ft	57 630 N·m	42,506 lbf-ft
40° (full turn)	37 620 N·m	27,747 lbf-ft	42 570 N·m	31,398 lbf-ft
Steering Cycle Times (full left to full right)				
At 2,350 rpm: 90 rpm Steering Wheel Speed	2.3 seconds		2.3 seconds	
Number of Steering Wheel Turns				
Full Left to Full Right or Full Right to Full Left	3.4 turns		3.4 turns	

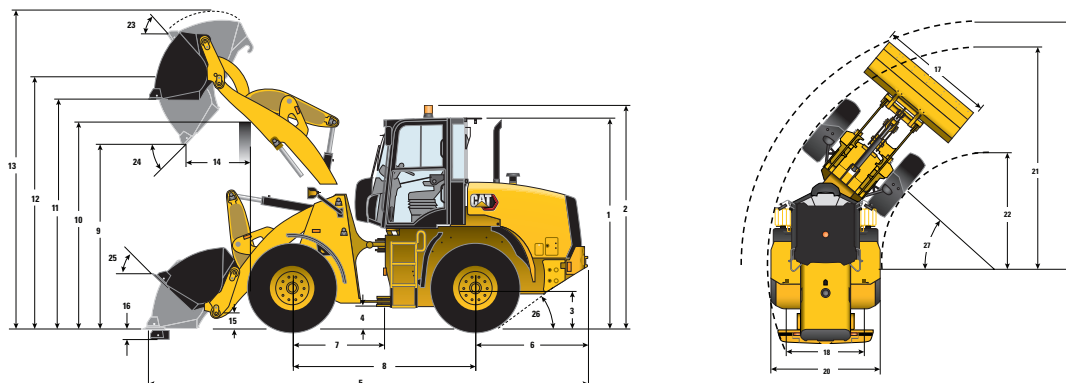
Service Refill Capacities

	914K		920K	
Fuel Tank	154 L	40.7 gal	154 L	40.7 gal
Cooling System	21.5 L	5.7 gal	21.5 L	5.7 gal
Engine Crankcase	9 L	2.4 gal	9 L	2.4 gal
Front Axle	7.5 L	2.0 gal	12.5 L	3.3 gal
Rear Axle	7.5 L	2.0 gal	12.5 L	3.3 gal
Hydraulic System (including tank)	98 L	25.9 gal	98 L	25.9 gal
Hydraulic Tank	55 L	14.5 gal	55 L	14.5 gal
Transmission	3.4 L	0.9 gal	3.4 L	0.9 gal

914K/920K Wheel Loaders Specifications

Dimensions with Bucket

All dimensions are approximate. Dimensions will vary with bucket, and tire choice. Refer to Operating Specifications with Buckets.



914K – Standard Lift

*Vary with bucket.

**Vary with tire.

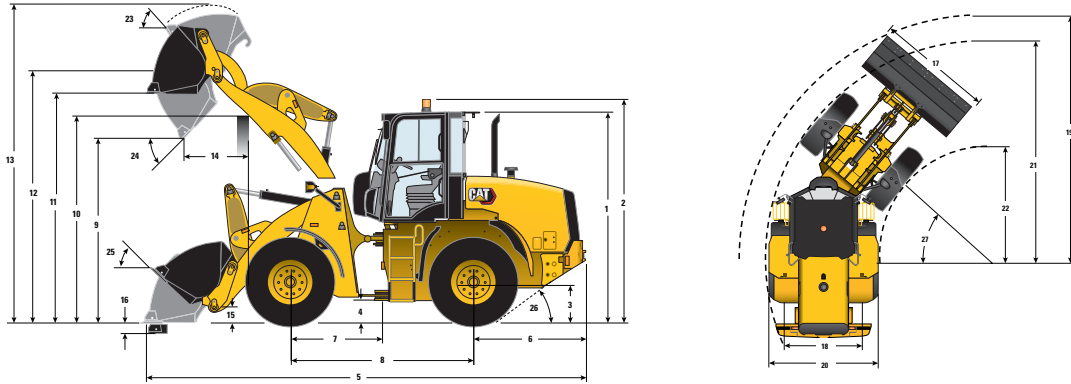
	Pin On	IT
** 1 Height: Ground to Cab	3098 mm (10'1")	3098 mm (10'1")
** 2 Height: Ground to Beacon	3288 mm (10'9")	3288 mm (10'9")
** 3 Height: Ground Axle Center	645 mm (2'1")	645 mm (2'1")
** 4 Height: Ground Clearance	410 mm (1'4")	410 mm (1'4")
* 5 Length: Overall	6286 mm (20'7")	6392 mm (20'11")
6 Length: Rear Axle to Bumper	1600 mm (5'2")	1600 mm (5'2")
7 Length: Hitch to Front Axle	1300 mm (4'3")	1300 mm (4'3")
8 Length: Wheel Base	2600 mm (8'6")	2600 mm (8'6")
* 9 Clearance: Bucket at 45°	2825 mm (9'3")	2754 mm (9'0")
** 10 Clearance: Load Over Height	3320 mm (10'10")	3320 mm (10'10")
** 11 Clearance: Level Bucket	3452 mm (11'3")	3451 mm (11'3")
** 12 Height: Bucket Pin	3706 mm (12'1")	3706 mm (12'1")
** 13 Height: Overall	4626 mm (15'2")	4686 mm (15'4")
* 14 Reach: Bucket at 45°	789 mm (2'7")	867 mm (2'10")
15 Carry Height: Bucket Pin	321 mm (1'0")	320 mm (1'0")
** 16 Dig Depth	84 mm (0'3.2")	84 mm (0'3.3")
17 Width: Bucket	2401 mm (7'10")	2401 mm (7'10")
18 Width: Tread Center	1800 mm (5'10")	1800 mm (5'10")
19 Turning Radius: Over Bucket	5200 mm (17'0")	5232 mm (17'1")
20 Width: Over Tires	2259 mm (7'4")	2259 mm (7'4")
21 Turning Radius: Outside of Tires	7308 mm (23'11")	6895 mm (22'7")
22 Turning Radius: Inside of Tires	6206 mm (20'4")	5833 mm (19'1")
23 Rack Angle at Full Lift	57°	57°
24 Dump Angle at Full Lift	47°	48°
25 Rack Angle at Carry	41°	41°
26 Departure Angle	33°	33°
27 Articulation Angle	40°	40°
Operating Weight	8908 kg (19,633 lb)	9112 kg (20,083 lb)

Dimensions listed are for a machine configured with general purpose bucket, bolt-on cutting edge, standard guarding, 80 kg (176 lb) operator, full fluids, 1200 kg (2,645 lb) of counterweights when equipped with coupler (IT/ISO/Fusion) and Michelin 17.5 R25 (L3) XHA2 tires.

914K/920K Wheel Loaders Specifications

Dimensions with Bucket

All dimensions are approximate. Dimensions will vary with bucket, and tire choice. Refer to Operating Specifications with Buckets.



*Vary with bucket.

**Vary with tire.



920K – Standard Lift

	Pin On	IT	Fusion
** 1 Height: Ground to Cab	3115 mm (10'2")	3115 mm (10'2")	3110 mm (10'2")
** 2 Height: Ground to Beacon	3305 mm (10'10")	3305 mm (10'10")	3300 mm (10'9")
** 3 Height: Ground Axle Center	645 mm (2'1")	645 mm (2'1")	640 mm (2'1")
** 4 Height: Ground Clearance	443 mm (1'5")	443 mm (1'5")	438 mm (1'5")
* 5 Length: Overall	6612 mm (21'8")	6714 mm (22'0")	6829 mm (22'4")
6 Length: Rear Axle to Bumper	1615 mm (5'3")	1615 mm (5'3")	1615 mm (5'3")
7 Length: Hitch to Front Axle	1350 mm (4'5")	1350 mm (4'5")	1350 mm (4'5")
8 Length: Wheel Base	2700 mm (8'10")	2700 mm (8'10")	2700 mm (8'10")
* 9 Clearance: Bucket at 45°	2862 mm (9'4")	2785 mm (9'1")	2708 mm (8'10")
** 10 Clearance: Load Over Height	3386 mm (11'1")	3386 mm (11'1")	3381 mm (11'1")
** 11 Clearance: Level Bucket	3568 mm (11'8")	3568 mm (11'8")	3493 mm (11'5")
** 12 Height: Bucket Pin	3823 mm (12'6")	3823 mm (12'6")	3818 mm (12'6")
** 13 Height: Overall	4864 mm (15'11")	4933 mm (16'2")	4857 mm (15'11")
* 14 Reach: Bucket at 45°	900 mm (2'11")	964 mm (3'1")	972 mm (3'2")
15 Carry Height: Bucket Pin	357 mm (1'2")	355 mm (1'1")	355 mm (1'1")
** 16 Dig Depth	55 mm (0'2.1")	55 mm (0'2.1")	131 mm (0'5.1")
17 Width: Bucket	2401 mm (7'10")	2401 mm (7'10")	2450 mm (8'0")
18 Width: Tread Center	1800 mm (5'10")	1800 mm (5'10")	1800 mm (5'10")
19 Turning Radius: Over Bucket	5400 mm (17'8")	5434 mm (17'9")	5483 mm (17'11")
20 Width: Over Tires	2259 mm (7'4")	2259 mm (7'4")	2259 mm (7'4")
21 Turning Radius: Outside of Tires	6977 mm (22'10")	6541 mm (21'5")	6133 mm (20'1")
22 Turning Radius: Inside of Tires	5937 mm (19'5")	5542 mm (18'2")	5186 mm (17'0")
23 Rack Angle at Full Lift	55°	54°	56°
24 Dump Angle at Full Lift	46°	47°	46°
25 Rack Angle at Carry	44°	43°	45°
26 Departure Angle	33°	33°	33°
27 Articulation Angle	40°	40°	40°
Operating Weight	9141 kg (20,146 lb)	9366 kg (20,641 lb)	9354 kg (20,615 lb)

Dimensions listed are for a machine configured with general purpose bucket, bolt-on cutting edge, standard guarding, 80 kg (176 lb) operator, full fluids, 1200 kg (2,645 lb) of counterweights when equipped with coupler (IT/ISO/Fusion) and Michelin 17.5 R25 (L3) XHA2 tires.

914K/920K Wheel Loaders Specifications

914K Operating Specifications with Buckets

		General Purpose Buckets			
					
		Pin On		IT	
Rated Capacity 100% (including BOCE)	m ³	1.6	1.9	1.6	1.9
	(yd ³)	(2.1)	(2.5)	(2.1)	(2.5)
Rated Capacity 110% (including BOCE)	m ³	1.7	2	1.7	2
	(yd ³)	(2.2)	(2.6)	(2.2)	(2.6)
Struck Capacity	m ³	1.45	1.75	1.45	1.75
	(yd ³)	(1.9)	(2.3)	(1.9)	(2.3)
17 Width: Bucket	mm	2401	2401	2401	2401
	(ft/in)	(7'10")	(7'10")	(7'10")	(7'10")
Nominal Material Density 100% Fill Factor	kg/m ³	1939	1605	1823	1498
	(lb/yd ³)	(3,256)	(2,688)	(3,061)	(2,509)
Nominal Material Density 110% Fill Factor	kg/m ³	1825	1525	1716	1423
	(lb/yd ³)	(3,307)	(2,750)	(3,108)	(2,567)
9 Clearance: Full Lift, 45° Dump	mm	2825	2746	2754	2699
	(ft/in)	(9'3")	(9'0")	(9'0")	(8'9")
14 Reach: Full Lift, 45° Dump	mm	789	858	867	923
	(ft/in)	(2'7")	(2'9")	(2'10")	(3'0")
Reach: 2130 mm (7'0") Clearance, 45° Dump	mm	1353	1378	1392	1396
	(ft/in)	(4'5")	(4'6")	(4'6")	(4'6")
Reach: Level Arm, Level Bucket	mm	2070	2178	2176	2280
	(ft/in)	(6'9")	(7'1")	(7'1")	(7'5")
16 Dig Depth	mm	84	84	84	83
	(in)	(3.3")	(3.3")	(3.3")	(3.3")
5 Length: Overall	mm	6286	6393	6392	6495
	(ft/in)	(20'7")	(20'11")	(20'11")	(21'3")
13 Height: Overall	mm	4626	4748	4686	4816
	(ft/in)	(15'2")	(15'6")	(15'4")	(15'9")
19 Turning Radius: Bucket at Carry	mm	5200	5233	5232	5268
	(ft/in)	(17'0")	(17'2")	(17'1")	(17'3")
Tipping Load – Straight, ISO 14397-1*	kg	7308	7190	6895	6740
	(lb)	(16,105)	(15,846)	(15,195)	(14,855)
Tipping Load – Straight, Rigid Tire**	kg	7612	7489	7182	7021
	(lb)	(16,776)	(16,506)	(15,828)	(15,474)
Tipping Load – Full Turn, ISO 14397-1*	kg	6206	6098	5833	5693
	(lb)	(13,677)	(13,441)	(12,855)	(12,546)
Tipping Load – Full Turn, Rigid Tire**	kg	6602	6488	6205	6056
	(lb)	(14,550)	(14,299)	(13,676)	(13,347)
Breakout Force	kg	7981	7101	7090	6317
	(lb)	(17,589)	(15,649)	(15,625)	(13,922)
Operating Weight	kg	8908	8959	9112	9184
	(lb)	(19,633)	(19,746)	(20,083)	(20,242)




*Full compliance to ISO 14397-1 (2007) Sections 1 thru 6, which requires 2% verification between calculation and testing.

**Compliance to ISO 14397-1 (2007) Sections 1 thru 5.

Dimensions listed are for a 914K and 920K configured with bucket, bolt-on cutting edge, additional guarding, 80 kg (176 lb) operator, full fluids, 1200 kg (2,645 lb) of counterweights when equipped with coupler (IT/ISO/Fusion) and Michelin 17.5 R25 (L3) XHA2 tires at a pressure of 3 bar (44 psi) in the front tires and 2 bar (29 psi) in rear tires.

914K/920K Wheel Loaders Specifications

920K Operating Specifications with Buckets

		General Purpose Buckets						Tire
								Michelin 20.5" R25 MX XHA2
		Pin On	IT	Fusion	Delta			
Rated Capacity 100% (including BOCE)	m ³ (yd ³)	1.6 (2.1)	1.9 (2.5)	2.0 (2.6)	1.6 (2.1)	1.9 (2.5)	1.7 (2.2)	— —
Rated Capacity 110% (including BOCE)	m ³ (yd ³)	1.7 (2.2)	2 (2.6)	2.1 (2.7)	1.7 (2.2)	2 (2.6)	1.8 (2.4)	— —
Struck Capacity	m ³ (yd ³)	1.45 (1.9)	1.75 (2.3)	1.75 (2.3)	1.45 (1.9)	1.75 (2.3)	1.3 (1.7)	— —
17 Width: Bucket	mm (ft/in)	2401 (7'10")	2401 (7'10")	2401 (7'10")	2401 (7'10")	2401 (7'10")	2450 (8'0")	— —
Nominal Material Density 100% Fill Factor	kg/m ³ (lb/yd ³)	1888 (3,171)	1562 (2,617)	1443 (2,446)	1775 (2,980)	1458 (2,443)	1539 (2,622)	— —
Nominal Material Density 110% Fill Factor	kg/m ³ (lb/yd ³)	1777 (3,220)	1484 (2,677)	1374 (2,506)	1671 (3,027)	1386 (2,499)	1454 (2,556)	— —
9 Clearance: Full Lift, 45° Dump	mm (ft/in)	2942 (9'7")	2862 (9'4")	2862 (9'4")	2870 (9'5")	2785 (9'1")	2713 (8'10")	+70 (0'2")
14 Reach: Full Lift, 45° Dump	mm (ft/in)	832 (2'8")	900 (2'11")	900 (2'11")	909 (2'11")	964 (3'1")	971 (3'2")	-75 (0'9")
Reach: 2130 mm (7'0") Clearance, 45° Dump	mm (ft/in)	1474 (4'10")	1502 (4'11")	1502 (4'11")	1515 (4'11")	1522 (4'11")	1484 (4'10")	-75 (0'9")
Reach: Level Arm, Level Bucket	mm (ft/in)	2167 (7'1")	2274 (7'5")	2274 (7'5")	2272 (7'5")	2376 (7'9")	2425 (7'11")	-75 (0'9")
16 Dig Depth	mm (in)	55 (2.2")	55 (2.2")	55 (2.2")	56 (2.2")	55 (2.2")	126 (5")	-70 (0'9")
5 Length: Overall	mm (ft/in)	6505 (21'4")	6612 (21'8")	6612 (21'8")	6611 (21'8")	6714 (22'0")	6825 (22'4")	— —
13 Height: Overall	mm (ft/in)	4742 (15'6")	4864 (15'11")	4933 (16'2")	4802 (15'9")	4933 (16'2")	4862 (15'11")	+70 (0'2")
19 Turning Radius: Bucket at Carry	mm (ft/in)	5368 (17'7")	5400 (17'8")	5400 (17'8")	5399 (17'8")	5434 (17'9")	5483 (17'11")	-144 (0'6")
Tipping Load – Straight, ISO 14397-1*	kg (lb)	7093 (15,632)	6977 (15,376)	6788 (14,961)	6692 (14,750)	6541 (14,416)	6189 (13,640)	+378 (833)
Tipping Load – Straight, Rigid Tire**	kg (lb)	7389 (16,284)	7267 (16,017)	7071 (15,584)	6971 (15,364)	6814 (15,017)	6447 (14,209)	+378 (833)
Tipping Load – Full Turn, ISO 14397-1*	kg (lb)	6043 (13,319)	5937 (13,085)	5772 (12,720)	5680 (12,518)	5542 (12,214)	5234 (11,535)	+330 (727)
Tipping Load – Full Turn, Rigid Tire**	kg (lb)	6429 (14,169)	6316 (13,920)	6140 (13,532)	6043 (13,317)	5896 (12,994)	5568 (12,271)	+330 (727)
Breakout Force	kg (lb)	9878 (21,771)	8802 (19,398)	8749 (19,282)	8793 (19,378)	7872 (17,350)	7624 (16,803)	— —
Operating Weight	kg (lb)	9090 (20,033)	9141 (20,146)	9170 (20,210)	9294 (20,483)	9366 (20,641)	9450 (20,827)	+630 (1,388)



*Full compliance to ISO 14397-1 (2007) Sections 1 thru 6, which requires 2% verification between calculation and testing.

**Compliance to ISO 14397-1 (2007) Sections 1 thru 5.

Dimensions listed are for a 914K and 920K configured with bucket, bolt-on cutting edge, additional guarding, 80 kg (176 lb) operator, full fluids, 1200 kg (2,645 lb) of counterweights when equipped with coupler (IT/ISO/Fusion) and Michelin 17.5 R25 (L3) XHA2 tires at a pressure of 3 bar (44 psi) in the front tires and 2 bar (29 psi) in rear tires.

914K/920K Wheel Loaders Specifications

914K/920K Operating Specifications with Buckets

		914K		920K		
		Light Material Buckets				Tire
						Michelin 20.5" R25 MX XHA2
		IT		IT		Delta
Rated Capacity 100% (including BOCE)	m ³	2.5	3.5	2.5	3.5	—
	(yd ³)	(3.3)	(4.6)	(3.3)	(4.6)	—
Rated Capacity 110% (including BOCE)	m ³	2.6	3.6	2.6	3.6	—
	(yd ³)	(3.4)	(4.7)	(3.4)	(4.7)	—
Struck Capacity	m ³	2.8	2.8	2.8	2.8	—
	(yd ³)	(3.6)	(3.6)	(3.6)	(3.6)	—
17 Width: Bucket	mm	2549	2549	2549	2549	—
	(ft/in)	(8'4")	(8'4")	(8'4")	(8'4")	—
Nominal Material Density 100% Fill Factor	kg/m ³	1097	768	1067	747	—
	(lb/yd ³)	(1,831)	(1,288)	(1,782)	(1,252)	—
Nominal Material Density 110% Fill Factor	kg/m ³	1054	747	1026	726	—
	(lb/yd ³)	(1,884)	(1,337)	(1,833)	(1,299)	—
9 Clearance: Full Lift, 45° Dump	mm	2513	2357	2629	2473	+70
	(ft/in)	(8'2")	(7'8")	(8'7")	(8'1")	(0'2")
14 Reach: Full Lift, 45° Dump	mm	1020	1178	1059	1215	-75
	(ft/in)	(3'4")	(3'10")	(3'5")	(3'11")	(0'9")
Reach: 2130 mm (7'0") Clearance, 45° Dump	mm	1384	1412	1518	1556	-75
	(ft/in)	(4'6")	(4'7")	(4'11")	(5'1")	(0'9")
Reach: Level Arm, Level Bucket	mm	2460	2681	2556	2777	-75
	(ft/in)	(8'0")	(8'9")	(8'4")	(9'1")	(0'9")
16 Dig Depth	mm	116	116	88	88	-70
	(in)	(4.6")	(4.6")	(3.5")	(3.4")	(0'9")
5 Length: Overall	mm	6686	6907	6905	7125	—
	(ft/in)	(21'11")	(22'7")	(22'7")	(23'4")	—
13 Height: Overall	mm	4932	5469	5048	5585	+70
	(ft/in)	(16'2")	(17'11")	(16'6")	(18'3")	(0'2")
19 Turning Radius: Bucket at Carry	mm	5405	5483	5570	5645	-144
	(ft/in)	(17'8")	(17'11")	(18'3")	(18'6")	(0'6")
Tipping Load – Straight, ISO 14397-1*	kg	6516	6414	6323	6215	+378
	(lb)	(14,362)	(14,137)	(13,935)	(13,697)	(833)
Tipping Load – Straight, Rigid Tire**	kg	6788	6682	6586	6474	+378
	(lb)	(14,960)	(14,726)	(14,516)	(14,268)	(833)
Tipping Load – Full Turn, ISO 14397-1*	kg	5483	5378	5337	5227	+330
	(lb)	(12,083)	(11,852)	(11,762)	(11,520)	(727)
Tipping Load – Full Turn, Rigid Tire**	kg	5812	5701	5657	5541	+330
	(lb)	(12,808)	(12,564)	(12,467)	(12,211)	(727)
Breakout Force	kg	5607	4472	7013	5625	—
	(lb)	(12,358)	(9,855)	(15,456)	(12,398)	—
Operating Weight	kg	9315	9443	9496	9624	+630
	(lb)	(20,530)	(20,812)	(20,929)	(21,212)	(1,388)



*Full compliance to ISO 14397-1 (2007) Sections 1 thru 6, which requires 2% verification between calculation and testing.

**Compliance to ISO 14397-1 (2007) Sections 1 thru 5.

Dimensions listed are for a 914K and 920K configured with bucket, bolt-on cutting edge, additional guarding, 80 kg (176 lb) operator, full fluids, 1200 kg (2,645 lb) of counterweights when equipped with coupler (IT/ISO/Fusion) and Michelin 17.5 R25 (L3) XHA2 tires at a pressure of 3 bar (44 psi) in the front tires and 2 bar (29 psi) in rear tires.

914K/920K Wheel Loaders Specifications

914K/920K Operating Specifications with Buckets

		914K		920K		
		High Dump Buckets				Tire
						Michelin 20.5" R25 MX XHA2
		ISO		ISO		Delta
Rated Capacity 100% (including BOCE)	m ³ (yd ³)	2.1 (2.7)	2.5 (3.3)	2.1 (2.7)	2.5 (3.3)	— —
Rated Capacity 110% (including BOCE)	m ³ (yd ³)	2.2 (2.9)	2.6 (3.4)	2.2 (2.9)	2.6 (3.4)	— —
Struck Capacity	m ³ (yd ³)	2.9 (3.8)	3.6 (4.7)	2.9 (3.8)	3.6 (4.7)	— —
17 Width: Bucket	mm (ft/in)	2401 (7'10")	2401 (7'10")	2401 (7'10")	2401 (7'10")	— —
Nominal Material Density 100% Fill Factor	kg/m ³ (lb/yd ³)	1014 (1,737)	844 (1,409)	978 (1,677)	813 (1,357)	— —
Nominal Material Density 110% Fill Factor	kg/m ³ (lb/yd ³)	967 (1,715)	812 (1,450)	934 (1,655)	782 (1,396)	— —
9 Clearance: Full Lift, 45° Dump	mm (ft/in)	2334 (7'7")	2296 (7'6")	2413 (7'10")	2408 (7'10")	+70 (0'2")
14 Reach: Full Lift, 45° Dump	mm (ft/in)	1144 (3'9")	1182 (3'10")	1218 (3'11")	1219 (3'11")	-75 (0'9")
Reach: 2130 mm (7'0") Clearance, 45° Dump	mm (ft/in)	1357 (4'5")	1360 (4'5")	1508 (4'11")	1505 (4'11")	-75 (0'9")
Reach: Level Arm, Level Bucket	mm (ft/in)	2676 (8'9")	2729 (8'11")	2825 (9'3")	2827 (9'3")	-75 (0'9")
16 Dig Depth	mm (in)	135 (5.3")	135 (5.3")	107 (4.2")	112 (4.4")	-70 (0'9")
5 Length: Overall	mm (ft/in)	6940 (22'9")	6993 (22'11")	7209 (23'7")	7213 (23'7")	— —
13 Height: Overall	mm (ft/in)	5370 (17'7")	5503 (18'0")	5619 (18'5")	5614 (18'5")	+70 (0'2")
19 Turning Radius: Bucket at Carry	mm (ft/in)	5445 (17'10")	5466 (17'11")	5630 (18'5")	5631 (18'5")	-144 (0'6")
Tipping Load – Straight, ISO 14397-1*	kg (lb)	5165 (11,383)	5128 (11,301)	4977 (10,968)	4925 (10,854)	+378 (833)
Tipping Load – Straight, Rigid Tire**	kg (lb)	5380 (11,857)	5341 (11,772)	5184 (11,425)	5130 (11,307)	+378 (833)
Tipping Load – Full Turn, ISO 14397-1*	kg (lb)	4257 (9,382)	4221 (9,302)	4109 (9,056)	4065 (8,958)	+330 (727)
Tipping Load – Full Turn, Rigid Tire**	kg (lb)	4512 (9,945)	4474 (9,860)	4356 (9,599)	4308 (9,495)	+330 (727)
Breakout Force	kg (lb)	4147 (9,140)	3970 (8,749)	5096 (11,231)	5099 (11,238)	— —
Operating Weight	kg (lb)	9949 (21,928)	9986 (22,009)	10 168 (22,409)	10 072 (22,197)	+630 (1,388)

*Full compliance to ISO 14397-1 (2007) Sections 1 thru 6, which requires 2% verification between calculation and testing.

**Compliance to ISO 14397-1 (2007) Sections 1 thru 5.

Dimensions listed are for a 914K and 920K configured with bucket, bolt-on cutting edge, additional guarding, 80 kg (176 lb) operator, full fluids, 1200 kg (2,645 lb) of counterweights when equipped with coupler (IT/ISO/Fusion) and Michelin 17.5 R25 (L3) XHA2 tires at a pressure of 3 bar (44 psi) in the front tires and 2 bar (29 psi) in rear tires.

914K/920K Wheel Loaders Specifications

General Purpose Bucket Selection

		Material Type														Tip Load Full Turn*							
		105% Salt, Fine	110% Shale	105% Sand, Dry and Loose	105% Clay and Gravel, Dry	110% Clay, Natural Bed, Dry	105% Sandstone	105% Limestone	110% Clay and Gravel, Crushed	105% Sand and Gravel, Wet	115% Sand and Clay, Loose	105% 25% Rock, 75% Earth	105% Gypsum, Crushed	105% Granite, Broken	110% Clay, Natural Bed			105% Sand and Gravel, Wet	110% Sand, Damp	115% 50% Rock, 50% Earth	110% Sand, Wet	110% Gravel, Pitrun	
Fill Factor %		m ³	yd ³	Counter-weight	kg/m ³	1200	1275	1350	1425	1500	1575	1650	1725	1800	1875	1950	kg	lb					
		kg/m ³	lb/yd ³	(2,023)	(2,149)	(2,275)	(2,402)	(2,528)	(2,655)	(2,781)	(2,907)	(3,034)	(3,160)	(3,287)									
914K	Pin On	1.6 (2.1)	Standard														115%	110%	105%	100%	6206	(13,681)	
		1.9 (2.5)	Standard														115%	110%	105%	100%	6098	(13,443)	
		IT	1.6 (2.1)	Standard														115%	110%	105%	100%	5833	(12,859)
	IT	1.9 (2.5)	Standard														115%	110%	105%	100%	5693	(12,551)	
	920K	Pin On	1.6 (2.1)	Standard														115%	110%	105%	100%	6043	(13,322)
			1.9 (2.5)	Standard														115%	110%	105%	100%	5937	(13,088)
2.0 (2.6)			Standard														115%	110%	105%	100%	5772	(12,725)	
IT		1.6 (2.1)	Standard														115%	110%	105%	100%	5680	(12,522)	
		1.9 (2.5)	Standard														115%	110%	105%	100%	5542	(12,218)	
		Fusion	1.7 (2.2)	Standard														115%	110%	105%	100%	5234	(11,539)

Material density, fill factor, and counterweight options are key variables when choosing the appropriate size of the bucket. The long floor and open throat design of the Performance Series Buckets along with the aggressive rack angles of the optimized linkage will demonstrate Fill Factors greater than 100% ISO rated. Refer to the expected Fill Factor % per Material Type at the top of the table and find a matching Counterweight and Fill Factor along the side for proper bucket sizing.

*Full compliance to ISO 14397-1 (2007) Sections 1 thru 6, which requires 2% verification between calculation and testing.

914K/920K Wheel Loaders Specifications

Light Material Bucket Selection

		Material Type		Material Type														Tip Load Full Turn*								
				Municipal Solid Waste	Flour, Wheat	Compacted Solid Waste	Barley, Bulk	Asphalt, Crushed	Soy Beans, Bulk	Corn Shelled, Bulk	Glass, Semi Crushed	Bulk Grain	Construction and Demolition	Silage, Packed	Manure/Muck, Wet	Coal Bituminous, Washed	Peat, Moist			Coal Bituminous, Raw	Sugar, Raw Cane	Fertilizer, Mixed	Coal Anthracite, Washed	Gypsum, Pulverized		
		Fill Factor %		115%	110%	115%	100%	110%	100%	100%	105%	100%	110%	115%	110%	110%	105%	105%	110%	110%						
		m ³	yd ³	Counter-weight	kg/m ³	lb/yd ³	600	660	720	780	840	900	960	1020	1080	1140	1200	kg	lb							
914K	IT	2.5	(3.3)	Standard										115%	110%	105%	100%					5483	(12,088)			
		3.5	(4.6)	Standard				115%	110%	105%	100%													5378	(11,856)	
920K	IT	2.5	(3.3)	Standard										115%	110%	105%	100%							5337	(11,766)	
		3.5	(4.6)	Standard				115%	110%	105%	100%														5227	(11,523)

High Dump Bucket Selection

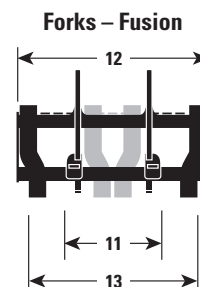
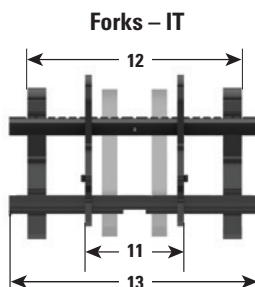
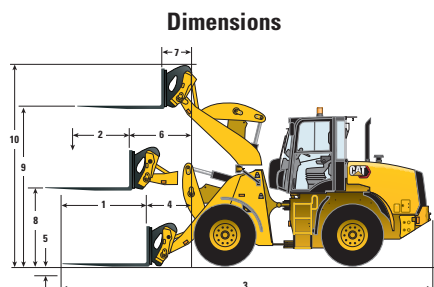
		Material Type		Material Type														Tip Load Full Turn*									
				Municipal Solid Waste	Flour, Wheat	Compacted Solid Waste	Barley, Bulk	Asphalt, Crushed	Soy Beans, Bulk	Corn Shelled, Bulk	Glass, Semi Crushed	Bulk Grain	Construction and Demolition	Silage, Packed	Manure/Muck, Wet	Coal Bituminous, Washed	Peat, Moist			Coal Bituminous, Raw	Sugar, Raw Cane	Fertilizer, Mixed	Coal Anthracite, Washed	Gypsum, Pulverized			
		Fill Factor %		115%	110%	115%	100%	110%	100%	100%	105%	100%	110%	115%	110%	110%	105%	105%	110%	110%							
		m ³	yd ³	Counter-weight	kg/m ³	lb/yd ³	600	660	720	780	840	900	960	1020	1080	1140	1200	kg	lb								
914K	IT	2.1	(2.7)	Standard										115%	110%	105%	100%							4257	(9,385)		
		2.5	(3.3)	Standard				115%	110%	105%	100%														4221	(9,305)	
920K	IT	2.1	(2.7)	Standard										115%	110%	105%	100%								4109	(9,058)	
		2.5	(3.3)	Standard				115%	110%	105%	100%															4065	(8,961)

Material density, fill factor, and counterweight options are key variables when choosing the appropriate size of the bucket. The long floor and open throat design of the Performance Series Buckets along with the aggressive rack angles of the optimized linkage will demonstrate Fill Factors greater than 100% ISO rated. Refer to the expected Fill Factor % per Material Type at the top of the table and find a matching Counterweight and Fill Factor along the side for proper bucket sizing.

*Full compliance to ISO 14397-1 (2007) Sections 1 thru 6, which requires 2% verification between calculation and testing.

914K/920K Wheel Loaders Specifications

Operating Specifications with Forks



	IT Coupler – Pallet Carriage		Fusion Coupler – Pallet Carriage	
	914K	920K	920K	Michelin 20.5" R25 MX XHA2
1 Fork Tine Length	1200 mm (3'11")	1200 mm (3'11")	1201 mm (3'11")	—
2 Load Center	600 mm (1'11")	600 mm (1'11")	500 mm (1'7")	—
3 Length: Overall	6701 mm (21'11")	6923 mm (22'8")	7230 mm (23'8")	—
4 Reach: Ground	630 mm (2'0")	738 mm (2'5")	1046 mm (3'5")	-75 (0'9")
5 Dig Depth	46 mm (1.8")	18 mm (0.7")	144 mm (5.9")	-70 (0'2")
6 Reach: Level Arm	1322 mm (4'4")	1420 mm (4'7")	1612 mm (5'3")	-75 (0'9")
7 Reach: Full Lift	471 mm (1'6")	523 mm (1'8")	715 mm (2'4")	-75 (0'9")
8 Clearance: Level Arm	1694 mm (5'6")	1703 mm (5'7")	1572 mm (5'1")	+70 (0'2")
9 Clearance: Full Lift	3490 mm (11'5")	3606 mm (11'9")	3475 mm (11'4")	+70 (0'2")
10 Height: Overall	4477 mm (14'8")	4593 mm (15'0")	4390 mm (14'4")	+70 (0'2")
11 Minimum Fork Spacing	300 mm (0'11")	300 mm (0'11")	300 mm (0'11")	—
12 Carriage Width	1550 mm (5'1")	1550 mm (5'1")	1550 mm (5'1")	—
13 Maximum Fork Spacing	1526 mm (5'0")	1526 mm (5'0")	1526 mm (5'0")	—
*Tipping Load – Straight, ISO 14397-1	5440 kg (11,989 lb)	5355 kg (11,802 lb)	5008 kg (11,037 lb)	+378 (833)
*Tipping Load – Full Turn, ISO 14397-1	4616 kg (10,174 lb)	4559 kg (10,048 lb)	4520 kg (9,367 lb)	+330 (727)
Operating Weight	8955 kg (19,737 lb)	9137 kg (20,137 lb)	9123 kg (20,107 lb)	+616 (1,357)
Rated Load (% of full turn tip)				
**50% of Tip: SAE J1197	2308 (5,087)	2280 (5,024)	2125 (4,683)	—
**60% of Tip: Rough Terrain, EN474-3	2770 (6,104)	2735 (6,028)	2550 (5,619)	—
**80% of Tip: Firm and Level, EN474-3	3693 (8,139)	3647 (8,038)	3400 (7,493)	—

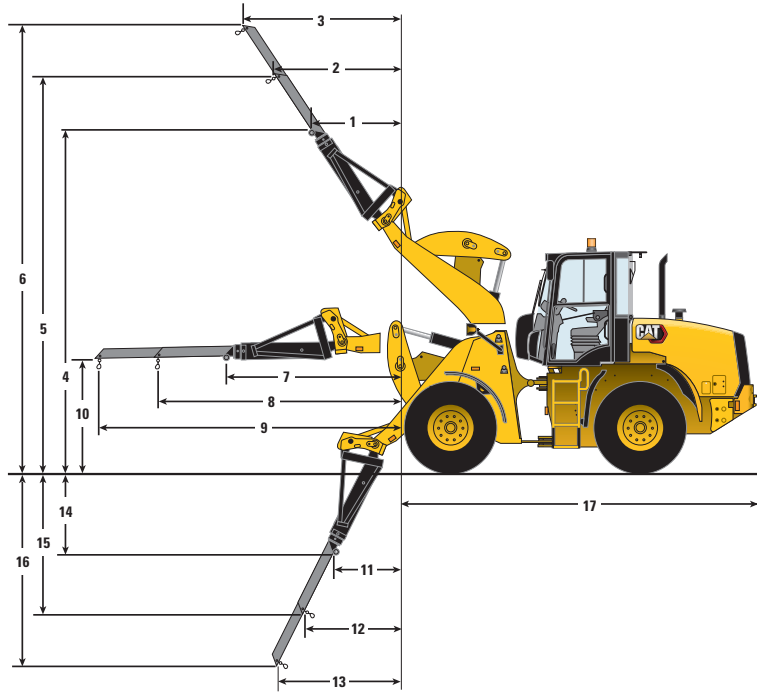
*Full compliance to ISO 14397-1 (2007) Sections 1 thru 6, which requires 2% verification between calculation and testing.

**Full compliance to EN474-3 and SAE J1197.

Dimensions listed are for a machine configured with coupler, standard guarding, 80 kg (176 lb) operator, full fluids, 1200 kg (2,645 lb) of counterweights and Michelin 17.5 R25 (L3) XHA2 tires.

914K/920K Wheel Loaders Specifications

Operating Specifications with Material Handling Arm



Material Handling Arm – IT		Material Handling Arm – Fusion		Material Handling Arm – IT		Material Handling Arm – Fusion	
914K	920K	920K	Michelin 20.5" R25 MX XHA2	914K	920K	920K	Michelin 20.5" R25 MX XHA2
mm (ft/in)	mm (ft/in)	mm (ft/in)	mm (ft/in)	mm (ft/in)	mm (ft/in)	mm (ft/in)	mm (ft/in)
1	1212 (3'11")	1334 (4'4")	1501 (4'11")	10	1837 (6'0")	1847 (6'0")	2439 (8'0")
2	1671 (5'5")	1826 (5'11")	1947 (6'4")	11	1381 (4'6")	1609 (5'3")	1857 (6'1")
3	2131 (6'11")	2319 (7'7")	2392 (7'10")	12	1928 (6'3")	2197 (7'2")	2110 (6'11")
4	5515 (18'1")	5605 (18'4")	5946 (19'6")	13	2476 (8'1")	2785 (9'1")	2363 (7'9")
5	6395 (20'11")	6474 (21'2")	6426 (21'0")	14	1632 (5'4")	1533 (5'0")	1832 (6'0")
6	7276 (23'10")	7344 (24'1")	6906 (22'7")	15	2474 (8'1")	2340 (7'8")	2436 (7'11")
7	3128 (10'3")	3227 (10'7")	3555 (11'7")	16	3318 (10'10")	3149 (10'3")	3040 (9'11")
8	4126 (13'6")	4225 (13'10")	4210 (13'9")	17	4870 (15'11")	4985 (16'4")	4983 (16'4")
9	5126 (16'9")	5225 (17'1")	4865 (15'11")				

	Material Handling Arm – IT		Material Handling Arm – Fusion	
	914K	920K	920K	Michelin 20.5" R25 MX XHA2
	kg (lb)	kg (lb)	kg (lb)	kg (lb)
Operating Weight	8924 (19,668)	9105 (20,067)	9235 (20,354)	+616 (1,357)
Rated Load* (50% of full turn tip** SAE J1197)				
Minimum Extension (7)	1552 (3,420)	1548 (3,412)	1360 (2,998)	+165 (363)
Middle Extension (8)	1219 (2,685)	1221 (2,691)	1171 (2,579)	+165 (363)
Maximum Extension (9)	1005 (2,214)	1010 (2,225)	1026 (2,260)	+165 (363)

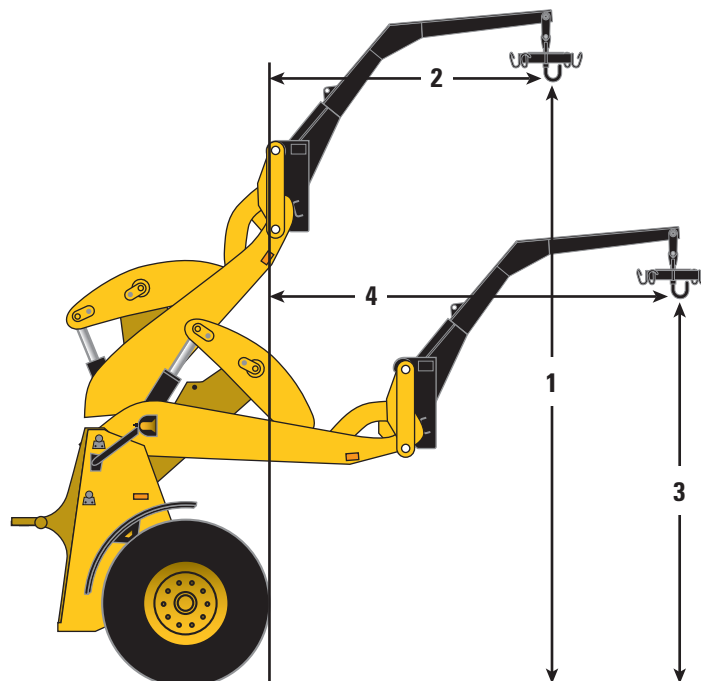
*Full compliance to ISO 14397-1 (2007) Sections 1 thru 6, which requires 2% verification between calculation and testing.

**Full compliance to EN474-3 and SAE J1197.

Dimensions listed are for a machine configured with coupler, standard guarding, 80 kg (176 lb) operator, full fluids, 1200 kg (2,645 lb) of counterweights and Michelin 17.5 R25 (L3) XHA2 tires.

914K/920K Wheel Loaders Specifications

Operating Specifications with Bag Handler



	Bag Handler – IT	
	914K	920K
1	4990 mm (16'4")	5106 mm (16'9")
2	2311 mm (7'6")	2384 mm (7'9")
3	3833 mm (12'6")	3203 mm (10'6")
4	3163 mm (10'4")	3280 mm (10'9")
*Tipping Load – Straight, ISO 14397-1	3282 kg (7,236 lb)	3724 kg (8,210 lb)
*Tipping Load – Full Turn, ISO 14397-1	2805 kg (6,184 lb)	3185 kg (7,022 lb)
Operating Weight	8099 kg (17,855 lb)	8814 kg (19,432 lb)
Rated Load (% of full turn tip)		
** 50% of Tip: SAE J1197	1403 kg (3,093 lb)	1593 kg (3,512 lb)
** 60% of Tip: Rough Terrain EN474-3	1683 kg (3,710 lb)	1911 kg (4,213 lb)
** 80% of Tip: Firm and Level EN474-3	2244 kg (4,947 lb)	2548 kg (5,617 lb)

*Full compliance to ISO 14397-1 (2007) Sections 1 thru 6, which requires 2% verification between calculation and testing.

**Full compliance to EN474-3 and SAE J1197.

Dimensions listed are for a machine configured with coupler, standard guarding, 80 kg (176 lb) operator, full fluids, 1200 kg (2,645 lb) of counterweights and Michelin 17.5 R25 (L3) XHA2 tires.

914K/920K Wheel Loaders Supplemental Specifications

Optional Equipment

	914K				920K			
	Operating Weight		Tipping Load – Full Turn*		Operating Weight		Tipping Load – Full Turn*	
	kg	lb	kg	lb	kg	lb	kg	lb
Change with options removed:								
Ride Control	-37	-82	-36	-79	-37	-82	-36	-79
Air Conditioning	-96	-212	-94	-207	-96	-212	-95	-209
Secondary Steering	-32	-71	-30	-66	-32	-71	-31	-68
Cab to Canopy	-97	-214	-61	-134	-97	-214	-69	-152
Heavier Counterweight – 1200 kg (2,645 lb)**	-320	-705	-492	-1,085	—	—	—	—
Change with options added:								
3 Valve to 4 Valve	+47	+103	-46	-101	+47	+103	-46	-101
Cold Weather/Arctic Package	+25	+55	+37	+81	+25	+55	+81	+178
Fender Deflectors	+48	+106	+16	+35	+48	+106	+16	+35
Guard Rear Door	+60	+132	+97	+213	+60	+132	+97	+213
Guard Crankcase	+12	+26	+12	+26	+12	+26	+12	+26
Guard Driveshaft	+33	+73	+10	+22	+33	+73	+10	+22
Guard Hitch	+29	+64	+18	+40	+29	+64	+18	+40
Guard Power Train	+43	+95	+37	+81	+43	+95	+37	+81

*Compliance to ISO 14397-1 (2007) Sections 1 thru 5, which requires 2% verification between calculation and testing.

**When equipped with coupler (IT/ISO/Fusion). Standard counterweight is 880 kg (1,940 lb).

Tire Options

Change with tire option as compared to standard Michelin XHA2 tire	914K				920K							
	Titan 17.5-25 L2 12PR		Goodyear 17.5-25 L2 PR		Titan 17.5-25 L2 12PR		Goodyear 17.5-25 L2 PR		TITAN 20.5-25 L2 16PR		TITAN 20.5 R25 MXL L3	
	mm	in	mm	in	mm	in	mm	in	mm	in	mm	in
Vertical Heights	-46	-2	-10	-0	-46	-2	-10	-0	+12	+1	+81	+3
Reach: Bucket at 45°	+7	+0	+6	+0	+7	0	+6	+0	+77	+3	+20	+1
Width: Over Tires	0	0	0	0	0	0	0	0	-40	-2	-40	-2
Turning Radius: Outside of Tires	+2	+0	-2	-0	2	0	-2	-0	-17	-1	-19	-1
	kg	lb	kg	lb	kg	lb	kg	lb	kg	lb	kg	lb
Tipping Load – Straight*	-113	-249	-123	-271	-111	-245	-121	-267	+143	+315	+362	+798
Tipping Load – Full Turn**	-98	-216	-106	-234	-96	-212	-105	-231	+124	+273	+313	+690
Operating Weight	-176	-388	-192	-423	-176	-388	-192	-423	+228	+503	+576	+1,270

*Full compliance to ISO 14397-1 (2007) Sections 1 thru 6, which requires 2% verification between calculation and testing.

**Compliance to ISO 14397-1 (2007) Sections 1 thru 5.

914K/920K Standard and Optional Equipment

STANDARD AND OPTIONAL EQUIPMENT

Standard and optional equipment may vary. Consult your Cat dealer for details.

POWER TRAIN	914K	920K	ELECTRICAL	914K	920K
Cat C4.4 Diesel Engine, meets Brazil MAR-1, equivalent to U.S. EPA Tier 3/EU Stage IIIA	●	●	120 amp sealed alternator	●	●
Electric fuel pump with 4 micron filtration	●	●	Single 850 CCA maintenance free battery	●	●
Hydrostatic transmission	●	●	Heavy duty battery package	○	○
Lube for life universal joints	●	●	Battery disconnect switch	●	●
Forward – Neutral – Reverse on joystick	●	●	Halogen roading and work lights	●	●
100% locking differentials with on the activation	●	●	LED work lights	○	○
Air cleaner, radial seal, dual filters	●	●	Work tool wiring harness	○	○
Hydraulic On Demand Cooling Fan	●	●	Product Link	●	●
Integrated Cyclone pre-cleaner	●	●			
Automatic Reversing Fan	○	○	CHASSIS	914K	920K
HYDRAULICS	914K	920K	Lockable toolbox	○	○
High Flow	○	○	Front fender and rear platform	○	○
Two valve, single lever joystick	●	●	Front and rear fenders	○	○
Three Valve, single lever joystick	○	○	Front and rear mud flaps	○	○
Four Valve, single lever with dual auxiliary control	○	○	Lockable engine enclosure	●	●
Diagnostic pressure taps	●	●	Recovery hitch	●	●
Scheduled Oil Sampling (S-O-S SM) port, hydraulic oil	●	●	Vandalism protection – locked service points	●	●
Variable displacement piston pump	●	●	Crankcase Guard	○	○
Screw to connect auxiliary lines	○	○	Driveshaft Guard	○	○
Push to Connect auxiliary lines	○	○	Front lights Guard	○	○
REGIONAL STANDARDS (AS REQUIRED)	914K	920K	Hitch Guard	○	○
Back-up alarm	●	●	Power Train Guard	○	○
Beacon	●	●	Rearview Camera with cab	○	○
Reflectors, roading	●	●	FLUIDS	914K	920K
Front Camera (as regional required)	○	○	Extended life coolant antifreeze, protected to –37° C (–34° F)	●	●
License plate holder (as regional required)	●	●	Cat Advanced HYDO™ 10 hydraulic oil	●	●
			● – standard ○ – optional ○ – not available		

● – standard ○ – optional ○ – not available

STANDARD AND OPTIONAL EQUIPMENT

Standard and optional equipment may vary. Consult your Cat dealer for details.

OPERATOR ENVIRONMENT	914K	920K	OPERATOR ENVIRONMENT	914K	920K
ROPS/FOPS protection:			Key Pad adjustment:		
– Canopy	●	●	– Adjustable Rimpull	○	○
– Cab	○	○	– Ride Control	○	○
Implement lockout	●	●	– Implement Modulation	○	○
Electro-hydraulic implement controls	●	●	– Hystat Aggressiveness	○	○
Gauges:			– Automatic Loader tilt and raise kickouts adjustable in cab	○	○
– Engine coolant temperature	●	●	Cat radio	○	○
– Hydraulic oil temperature	●	●	Rear blind	○	○
– Fuel level	●	●	Security system	○	○
– Speedometer	●	●	Retractable, hi-vis seat belt 75 mm (3")	○	○
Warning system indicators:					
– Air filter restriction	●	●	LOADER	914K	920K
– Brake charge pressure low	●	●	Parallel Lift Optimized Z-Bar Linkage	●	●
– Engine malfunction	●	●	Cylinder snubbing	○	●
– Park brake applied	●	●	Pin On or Integrated Tool Carrier (IT) interface	○	○
– Electrical system voltage flow	●	●	Fusion Coupler	○	○
– Hydraulic oil filter bypass	●	●			
– Action indicator	●	●	● – standard ○ – optional ○ – not available		
Seat, Mechanical, Vinyl	●	●			
Seat, Mechanical, Fabric	○	○			
Seat, Air Ride, Deluxe	○	○			
Seat, Air Ride, Deluxe Plus	○	○			
Heater/defroster	●	●			
Tinted front glass, laminated	●	●			
Adjustable steering column	●	●			
Rear window defrost	●	●			
Lockable storage box	●	●			
Internal 12V power source	●	●			
External 12V power source	●	●			
Heater and air conditioner	○	○			
● – standard ○ – optional ○ – not available					

For more complete information on Cat products, dealer services and industry solutions, visit us on the web at www.cat.com

© 2022 Caterpillar. All Rights Reserved.

VisionLink is a trademark of Trimble Navigation Limited, registered in the United States and in other countries.

Materials and specifications are subject to change without notice. Featured machines in photos may include additional equipment. See your Cat dealer for available options.

CAT, CATERPILLAR, LET'S DO THE WORK, their respective logos, "Caterpillar Corporate Yellow," the "Power Edge" and Cat "Modern Hex" trade dress as well as corporate and product identity used herein, are trademarks of Caterpillar and may not be used without permission.
www.cat.com www.caterpillar.com



AEHQ8389-01
Replaces AEHQ8389
(AME, ANZP, Eurasia,
LACD, and SEA)

