

FALL 2021

# GOVERNMENTAL SOLUTIONS

A CATERPILLAR PUBLICATION SERVING GOVERNMENTAL AGENCIES



**RELIABLE** SOURCE

VERSATILE CAT® WHEEL EXCAVATORS KEEP  
ROADSIDE DITCHES CLEAR

**CATERPILLAR®**



# M315 WHEEL EXCAVATOR

## INCREASE PRODUCTION WITH LOW OPERATING COSTS

The Cat® M315 Wheeled Excavator provides top performance with up to 15 percent more swing torque, and productivity-boosting technology options.

### Simple to Operate

- Start the engine with the push-to-start button, a Bluetooth key fob, or the unique Operator ID function.
- Program joystick controls and other machine performance settings using the touch screen display and save them within a unique Operator ID; the excavator remembers your settings each time you log in.
- Navigate quickly on the standard 10-inch touchscreen monitor or with the aid of the jog dial control.
- Not sure how a function works or how to maintain the excavator? Simply access the operator's manual on the touchscreen monitor.
- The auto axle lock presses the pedal for you to reduce your overall number of actions. The machine automatically detects when the service brake and axle need to be locked or unlocked. They release automatically when you press the travel pedal.
- Reduced radius tail swing providing a smaller operating envelope for tighter working conditions.
- VA Boom enables you to work closer to the machine and can limit boom height in the event you're working with overhead restrictions.

### Up To 10% Lower Maintenance Costs

- Quickly check and service your machine with daily maintenance points accessible from ground level.
- Save up to 10 percent in maintenance parts with new, longer lasting filters.
- Track your machine's filter life and maintenance intervals on the in-cab monitor.
- The new hydraulic oil filter provides improved filtration performance;

anti-drain valves keep oil clean when the filter is replaced, and a 3,000-hour replacement interval provides 50 percent longer life than previous filter designs.

- S•O•S<sup>SM</sup> ports are located at ground level, simplifying maintenance and providing quick, easy extraction of fluid samples for analysis.

### Enhanced Comfort

- Visibility through larger windows, standard right and rear side cameras and optional 360 degree camera attachment.
- Operator comfort through Deluxe & Premium cab offerings with the Premium cab providing a heated and ventilated seat
- Get in and out of the cab easier using the tip-up left console.
- Feel more comfortable in the cab while you work with reduced cab vibrations due to advanced viscous mounts.
- Control the excavator comfortably with easy-to-reach controls.

### High Performance with Lower Fuel Consumption

- The Cat engine matches your performance and production needs. The engine meets U.S. EPA Tier 4 Final emission standards.
- Travel between sites easier and faster with travel speeds up to 23 mph.
- The advanced hydraulic system provides the optimum balance of power and efficiency, while giving you the control you need for precise working requirements.
- With up to 15 percent more swing torque, you can complete jobs faster and move on to the next one.
- Auxiliary hydraulic options give you the versatility to use a wide range of Cat attachments.

**To learn more about the Cat M315 Wheel Excavator, contact our dealership. ☎**

# GOVERNMENTAL SOLUTIONS

FALL 2021

## CONTENTS



### 4 Reliable Source

Versatile Cat® Wheel Excavators keep roadside ditches clear

### 7 Winterizing Tips

Is your equipment fleet ready for winter?

### 8 Compact Track Loaders

299D3 XE Land Management



#### ON THE COVER:

Cat® M314 Wheel Excavator is the perfect tool for ditch cleaning along miles of county roads.

### 9 From The Archive

Operation Deep Freeze



### 10 Less Stress

Cat® 836K Compactor makes big difference at Tennessee Landfill

### 13 Coverage You Can Count On

Protect your Cat® Motor Grader with the right level of coverage—right when you need it.

### 14 CAT® Certified Rebuilds

Cost-effective options for rebuilding your Cat machine

*Governmental Solutions* is published by High Velocity Communications Inc. on behalf of Caterpillar and your Cat Dealer. Publisher, Tim O'Brien • Editor, John Rondy • Creative Director, Jay Blazek • Director of Client Services, Kelly Pemper. Every attempt has been made to ensure specifications are accurate. Because specifications are subject to change without notice, check with us, your Cat Dealer, for the latest equipment information. Some photography provided courtesy of Caterpillar Inc. High Velocity Communications Inc., 1720 Dolphin Drive, Suite D, Waukesha, WI 53186-1489. Phone (262) 544-6600. Please submit address corrections and changes via e-mail to: Kelly@HighVelocityCommunications.com. © 2021 High Velocity Communications Inc. Printed in the U.S.A. Volume 21 Number 3. © 2021 Caterpillar. All Rights Reserved. CAT, CATERPILLAR, LET'S DO THE WORK, their respective logos, "Caterpillar Yellow", the "Power Edge" and Cat "Modern Hex" trade dress as well as corporate and product identity used herein, are trademarks of Caterpillar and may not be used without permission. VisionLink® is a trademark of Trimble Navigation Limited, registered in the United States and in other countries.

**CAT.COM/GOVERNMENTAL**

Cat.com/governmental includes specifications for all machines. Download them or contact our dealership. Check this out and more at **Cat.com/governmental**.



# RELIABLE SOURCE

## VERSATILE CAT® WHEEL EXCAVATORS KEEP ROADSIDE DITCHES CLEAR

Located at the southeastern border of Indiana, Warrick County has enjoyed a tradition as a successful mining community since the early 1900s. Warrick County was first organized in 1813 and was named for Captain Jacob Warrick, an Indiana militia company commander killed during the Battle of Tippecanoe in 1811.

Although coal mining has declined somewhat in recent years, the county highway department works diligently to keep 786 miles of roads and 113 bridges in good repair. Crews constantly clean out and clear all the ditches that run alongside Warrick County's many roads that were constructed to serve three major mines.

"It's always about maintaining drainage," says lead foreman and former county commissioner Marlin Weisheit. "We're right along the Ohio River here and the roads last longer if you have good drainage, so we try to always establish and maintain that good drainage. We

don't want any water standing anywhere and we want our roads to drain well. Plus, we have a lot of heavy rains down here—it seems like every summer we have three 20-year rains or floods. So, the better drainage we have, the more it pays off in the long run."

The county's 40 employees keep busy year-round with chores in addition to the relentless ditch cleaning that requires clearing all the ditches out every three to four years—then starting the whole process over again.

Warrick County also uses five mowing tractors and runs four of them every day. One of them, a big brush cutter, runs all-year long, cutting back growth around stop signs and intersections in the wintertime when the foliage is down.

"We have a few minor roads that are gravel and a few chip-and-seal roads," Weisheit says. "We're getting ready to rechip and seal a few roads now, but our



primary goal is to eventually pave everything. So, each year we try to lose one of the few remaining chip-and-seal county roads. And as we build the bases up on these roads, we're actually prepping them for pavement later on."

Warrick County crews tackle a little bit of everything. There are three districts, and each foreman has his own crew. Each crew has its own excavator, three dump trucks and a couple of laborers. They do road maintenance and subdivision repair. The crews cut out concrete streets and rebuild them, and then do some minor ditching. The county handles its own chip-and-seal work, but contracts with a local contractor to perform all the paving.

### Buying through Sourcewell

Performing a wide range of tough clearing work across miles of remote

country requires versatile, reliable equipment. That's why Warrick County worked with its Cat® dealer, Boyd Cat, to acquire two dependable Cat M314 Wheel Excavators.

"Boyd brought out an M314 for us to try for a couple of weeks to see if it would fit our needs, and we were pretty well sold on it," Weisheit said. "With its power, mobility and comfortable operator's compartment, we knew right off this was what we needed to buy, and the price was so much better than that of the competitor."

Based on the advice of Boyd Cat, Warrick County utilized the national cooperative purchasing organization, Sourcewell, to acquire the two machines.

Formerly known as the National Joint Powers Alliance (NJPA), Sourcewell saves time and money by combining the buying power of more

than 50,000 government, education, and nonprofit organizations. As a trusted agency resource for more than four decades, Sourcewell holds hundreds of competitively solicited cooperative contracts ready for use.

"Sourcewell is very easy to use," says Boyd sales representative Michael Barley. "All the bidding is done already. So, all we have to do is go in and find the approved machinery list and obtain the customer's member number. We fill out the paperwork and submit it. And that way the bidding process is taken care of, and the customer can come in and obtain exactly what they want."

Warrick County can access the Sourcewell website, sign in and quickly see the quote for a given piece of equipment, Weisheit says.

*(Continued on page 6)*

“It saves us a lot of time by not having to bid out with different dealers, and it has worked well for us on recent purchases,” he says. “We buy a lot of smaller vehicles through the same bid and it has just worked out very well for us as far as purchasing.”

In the past, Warrick County ran another brand of excavator for their ditch cleaning needs for nearly 20 years. But as those machines got older, they became harder to maintain and expensive to repair.

“So, two years ago we did some checking and decided to purchase the Cat Wheel Excavator, and they have worked out great,” Weisheit says. “We’re very happy with them. There is very little maintenance involved and very few repairs.

Both machines are equipped with ditch cleaning buckets. Warrick

County is considering adding thumbs to provide even more versatility—along with a third M314 so that all three of the county’s work districts have their own M314 Wheel Excavator.

“Cat machines are just very dependable,” he adds. “We recently purchased our second M314, and we couldn’t be happier with it. We’re looking forward to buying our third one—and then each district will have a Cat Wheel Excavator. I worked in the mines for 15 years running Cat machines, and I’ve always just been sold on Caterpillar.”

Weisheit says Warrick County has very little downtime with their Cat M314s.

“For our operators, at first they were a little hesitant about the transition from the other brand of machines,” says Weisheit. “But

after getting on the M314 for a few weeks, there was no going back. The operators love these Cat machines, and we receive good service on them when we need it. But very little service is needed, and they’re easy to maintain.”

According to Weisheit, a fair amount of networking takes place between county officials in his region.

“All the county commissioners seem to talk to each other, coordinate on things and share information about best practices,” he says. “Warrick County was one of the first ones to use Sourcewell, and it has since been used by four or five other counties here to procure Cat machines.

“We all realized it’s just a better way to go.”





# WINTERIZING TIPS

## IS YOUR EQUIPMENT FLEET READY FOR WINTER?

Check these simple tips off your list as you head into the colder months to make sure your equipment is ready to perform at peak efficiency when the temperatures plummet.

- 1) CHECK YOUR OIL:** You need to ensure oil is flowing freely in colder temperatures. Check the viscosity of the oil you're using to assure that it's the right one for your piece of equipment. It's a good idea to use a low viscosity oil in the colder winter months, so it can flow faster. You should also make sure you change your oil leading into and after winter.
- 2) VISUALLY INSPECT TRACKS AND TIRES:** Make sure your tires, undercarriage and tracks are in good working condition. Remove all the debris and snow that you can whenever possible. You should also check to make sure your tires are properly inflated—don't forget to look for wear marks and cuts on the tires.
- 3) INSPECT HOSES AND BELTS:** They can be especially sensitive to extreme winter cold. Make sure you're doing a visual inspection of your hydraulic hoses — the rubber tubing can wear down in freezing temperatures, making them stiff and brittle. You should replace any parts with cracks and breaks.
- 4) KEEP YOUR FUEL TANK TOPPED OFF:** You should be topping off your fuel tank after every shift. If you don't, you could see your fuel start to gel at colder temperatures. Topping off the fuel tank also

helps to prevent condensation from forming in the tank, which can lead to water freezing in a fuel line.

- 5) KEEP AN EYE ON YOUR DEF:** Diesel Exhaust Fluid (DEF) will freeze at 12 degrees, so you should make sure that there is a way to warm and thaw frozen DEF to keep your machine running. If you aren't using your equipment in the winter months or storing it indoors, consider draining the DEF.
- 6) CHECK YOUR BATTERY:** Check your battery leading into the winter months. Look to see that the battery electrolyte is filled up to the indicated level. You should also check the alternator, test the battery, and ensure that there is no rust or debris on the battery terminals. If you're not using your machine in the winter, it's a good idea to remove the battery from the machine and store it indoors to prevent it from freezing.

Another way to ensure uptime, extend equipment life and maximize your investment is through a Cat® Customer Value Agreement (CVA). A CVA is a hassle-free ownership plan that provides many benefits, including 80 percent lower fuel injector cost per hour with Cat Filters. Receive expert dealer support, hassle-free maintenance and longer component life—all in one monthly payment.

***Be sure to review your machine's Operation & Maintenance Manual for any other necessary cold weather preparation steps.*** 



# COMPACT TRACK LOADERS

## 299D3 XE LAND MANAGEMENT

The Cat® 299D3 XE Land Management Compact Track Loader is an industry-focused machine solution for agencies involved in demanding vegetation-management applications—ranging from mulching, brush-cutting, vegetation control, fire cleanup and mowing.

The 299D3 XE Land Management Compact Track Loader is fitted with additional equipment specifically designed to tackle these challenging applications.

### PROTECTIVE GUARDING AND SEALING

Factory-equipped guarding and sealing components provide additional protection for areas that could be exposed to damage and to help reduce debris entry.

The 299D3 XE Land Management machine's powerful Cat C3.8 engine combines with its high-flow/high-pressure auxiliary hydraulic system to deliver a calculated hydraulic power rating of 94, resulting in optimum performance when powering high-production, hydro-mechanical attachments.

### POWERFUL HYDRAULICS

The XE hydraulic system provides high flow and high pressure that delivers industry leading hydraulic horsepower to efficiently run even the most power-hungry work tools.

299D3 XE Land Management Specifications:

- Gross Power – 110 hp
- Auxiliary Hydraulic Pressure (maximum) – 4,061 psi
- Auxiliary Hydraulic Flow (maximum) – 40 gal/min

### CAT MULCHERS

Performance matched for the 299D3 XE Land Management, mulchers reduce saplings, shrubs and trees into mulched material, making these attachments ideal for environmental maintenance, such as creating fire lanes.

Caterpillar offers a wide range of attachments to help you do more with one machine. Designed and built for optimum performance and durability, Cat Work Tools deliver high productivity in a variety of applications to maximize versatility:

### CLEARING

- Brushcutter
- Industrial Grapple Bucket
- Industrial Grapple Rake
- Mulcher
- Power Box Rake
- Skeleton Bucket
- Stump Grinder

### EARTHMOVING

- Angle Blade, Dozer Blade, Smart Grader Blade, and Smart Dozer Blade
- General Purpose Bucket
- Industrial Performance Bucket
- Industrial Grapple Bucket
- Multi-purpose Bucket
- Side Discharge Bucket
- Trencher

### FINISHING

- Broom
- Forks
- Power Box Rake
- Smart Dozer Blade

**To learn more, please contact our dealership. **



# OPERATION DEEP FREEZE

## CAT® MACHINES SUPPORT ANTARCTIC MISSION

“Operation Deep Freeze” was the code name for a series of U.S. missions to Antarctica beginning in 1955. The initial reason behind the missions was a scientific collaboration between 40 nations to carry out studies of the environment.

The Deep Freeze missions set up the American research stations in Antarctica and kept the stations supplied. Caterpillar provided track-type tractors and diesel electric sets specially built to withstand constant temperatures of 65 degrees below zero for use 24 hours a day. In fact, Cat® track-type tractors were the first dozers in Antarctica.

Caterpillar engineers specifically developed low-ground-pressure (LGP) tractors for greater stability on the ice. These machines constructed roads and bases, hauled supplies, maintained airstrips and trails, dozed snow and carried snow to melting units in order to produce drinking water. In 1958, they helped the U.S. Navy complete the first permanent airstrip on Antarctica. Generator sets provided all of the electric power for heat and lights, communication systems, kitchens, radar and ground control approach systems and the snow melting system for drinking water.

Glen Sankey, a Caterpillar service representative at the time, said in a 1957 issue of *Caterpillar News & Views*: “There are many other stories I could tell just as proudly about Cat equipment in service. But suffice it here to say our machines are respected because they



deliver the goods when life and limb depend on it.”

The team was so dependent on the tractors, they named them, such as Pam, Colleen, Big John, etc., said Lee Fosburgh, a Cat corporate archivist.

“They were literally viewed as part of the team—they even had a birthday party for the machines based on the time each arrived,” Fosburgh said.

Nearly 150 Caterpillar machines and engines were in use at the various bases in Antarctica by 1960. A number of these dozers were recently retired after being in operation for nearly 60 years. Cat products are still supporting the stations today. 📧

## APWA CALENDAR

Upcoming training and education programs from the American Public Works Association (APWA) include:



### SEPT. 14, 2021

The Click, Listen & Learn Program: **Public Fleet Management Certificate** will be offered as a webinar.

### SEPT. 21, 2021

The Click, Listen & Learn Program: **Construction Inspection Workshop** will be offered as a webinar.

### NOV. 3, 2021

The Click, Listen & Learn Program: **SCRC Communities Perspective On Operations & Maintenance** will be offered as a webinar.

For more information or to register online, visit [www.APWA.net](http://www.APWA.net). Questions? Call the APWA's Education Department at **800.848.2792**.

## NIGP CALENDAR

Training and educational programs offered by the National Institute of Governmental Purchasing (NIGP) include:

### OCT. 7, 2021

The course, Competency Module: **Sourcing and Contracting Methods**, will be offered as a virtual class.

### OCT. 12, 2021

The course, Competency Module: **Cost, Price and Value Analysis**, will be offered as a virtual class.

### OCT. 26, 2021

The course, **Legal Aspects of Public Procurement**, will be offered as a virtual class.

For additional information or to register online, visit [nigp.org](http://nigp.org). More details are also available by calling **703.736.8900**.





## CAT® 836K COMPACTOR MAKES BIG DIFFERENCE AT TENNESSEE LANDFILL

Despite a somewhat rural location about an hour northeast of Nashville, Smith County landfill in Carthage takes in and processes a high volume of diverse waste every day.

Serving a large, four-county area, Smith County solid waste director Johnny Lee sought a more effective means of processing the 750 tons of municipal and Construction & Demolition waste delivered by as many as 100 trucks each day. First opened in 1988, the landfill's 15 employees are cross-trained on all machines so if somebody is absent, someone else can step up and fill that spot.

Facing a never-ending flow of waste that was challenging the operation, landfill operators found a more cost-effective solution that improves both efficiency and compaction and will extend the life of the landfill.

After doing significant research and speaking with other landfill operators, Lee sought assistance from his local Cat dealer, Thompson Machinery. Following a thorough site evaluation, equipment experts at Thompson recommended a Cat® 836K Landfill Compactor, the largest and heaviest landfill compactor in the Cat product line.

"This new 836K has made a night-and-day difference," Lee said.

"We found the 836K was a better-sized match for our operation, all the way around. It helped us to be more efficient in our daily operation, by getting it done in a reasonable time. My operators weren't having to run 10 or 12 hours a day. We got it back down to eight hours a day. To be honest, that machine was a blessing to us."

The 836K was able to achieve far greater compaction.

"Before we started using the Cat compactor, our compaction rate was sitting at 68 percent, and it's improved by 20 points to 88 percent," Lee said. "The main thing is the compaction ratio—we're filling voids that we weren't filling before."

"The Cat compactor makes my job a whole lot easier and it extends the life of the landfill, making daily operation a lot smoother, too. The employees aren't stressed out anymore."

Lee says if he has a cell with a projected life of five years, by improving the compaction rate he could extend it by a year or more, and gaining significant additional revenue per unit of space.

### Improved fuel economy

Lee says the landfill has realized a 10 percent reduction in fuel consumption with the 836K compared to the previous machine that was in operation.



**“The Cat compactor makes my job a whole lot easier and it extends the life of the landfill, making daily operation a lot smoother, too. The employees aren’t stressed out anymore.”**

**– JOHNNY LEE**  
Solid Waste Director,  
Smith County Landfill

“Once the operator spreads the waste over the target area, he’ll make three passes and it’s done,” he says. “With our prior machine, we were running five to six passes, yet still weren’t achieving the density we’re getting with the three passes on the 836K.”

The larger refuse trucks dump off a tipper. And for the little roll offs, Smith County actually built a pad beside the tipper, and they dump right there on the working face. Lee uses the 836K to doze and compact the waste in three-foot layers. At day’s end, the 836 and/or the Cat 963 Waste Handlers spread six inches of cover material.

### **Cat® equipment fleet**

In addition to the 836K Landfill Compactor, Smith County owns two Cat 963K Waste Handler track loaders. They also have a 320 excavator, and two Cat haul trucks—a 725 and 730. They also operate two dozers and Lee says they are considering a new D6 XL Dozer.

The two waste handlers push waste material on the Class 3 and the Class 1 landfills.

“The 963 waste handlers we purchased—starting with one in 2014 and the difference it made—led us to purchase another one in 2017,” Lee said. “It’s just an all-around good machine because it’s like a Swiss army knife—we can do the bank excavation and the spreading and the compaction with it. It’s a multi-purpose machine.

“The Cat Articulated Trucks have made a big difference hauling our dirt,” Lee adds. “Several years ago, we used dump trucks and they were very limited as to where they could operate. For instance, we had an inch and one-half of rain over a weekend but on Monday we were still able to move dirt.

“Because we have those articulated trucks, the 725 and the 730, we were able to get in there, back in the trash, and we were able to place our cover with them.”

Smith County also operates a water truck nearly all day long to keep dust levels down on the haul roads that can stretch up to one-half mile.

### **Lease/purchase preferred**

The county was buying equipment outright for several



years but now prefers to lease.

“That way we have options to turn it in after 36 months if we need to, and we can maintain a new fleet of equipment,” Lee says. “With our newer fleet, we achieve a significant uptime improvement compared to what we achieved in the past.”

The 836K at Smith County is currently leased with an option to purchase. The county might consider purchase at the end of the lease based upon how the machine has performed, according to Lee.

Lee’s strong background in service and equipment maintenance has instilled a key operating philosophy at the landfill and sets a high standard for everyone to follow. When an operator arrives first thing in the morning, he has a detailed checklist on the machine that he must go through.

“It’s a preventative maintenance thing for us here at Smith County,” Lee says. “All of our operators walk around their machines to carefully inspect them before and after their shifts every day. I know firsthand how important this daily inspection is.

*(Continued on page 12)*

“It’s what must be done to ensure you’re taking care of the machines and taking care of the county’s investment at the same time.”

### Importance of dealer relationship

To reduce maintenance costs, Smith County selected the preventative maintenance (PM) program with Thompson Machinery. Not only has it accomplished that objective, but having the Cat dealer be responsible for maintenance has translated into working much more efficiently.

“I didn’t think it would make that big of a difference, but it did,” Lee says.

Thompson PM technicians recently performed the 1,000-hour service on the 836K, and it didn’t have an added cost, as it’s included in the PM agreement.

Parts delivery is efficient, too. Lee says that if the landfill places an order by early afternoon, their parts are in a nearby drop box Thompson provided by 7:30 a.m. the next day.

“We’ve had good service out here because of the Cat parts availability,” Lee says. “It’s a blessing that you

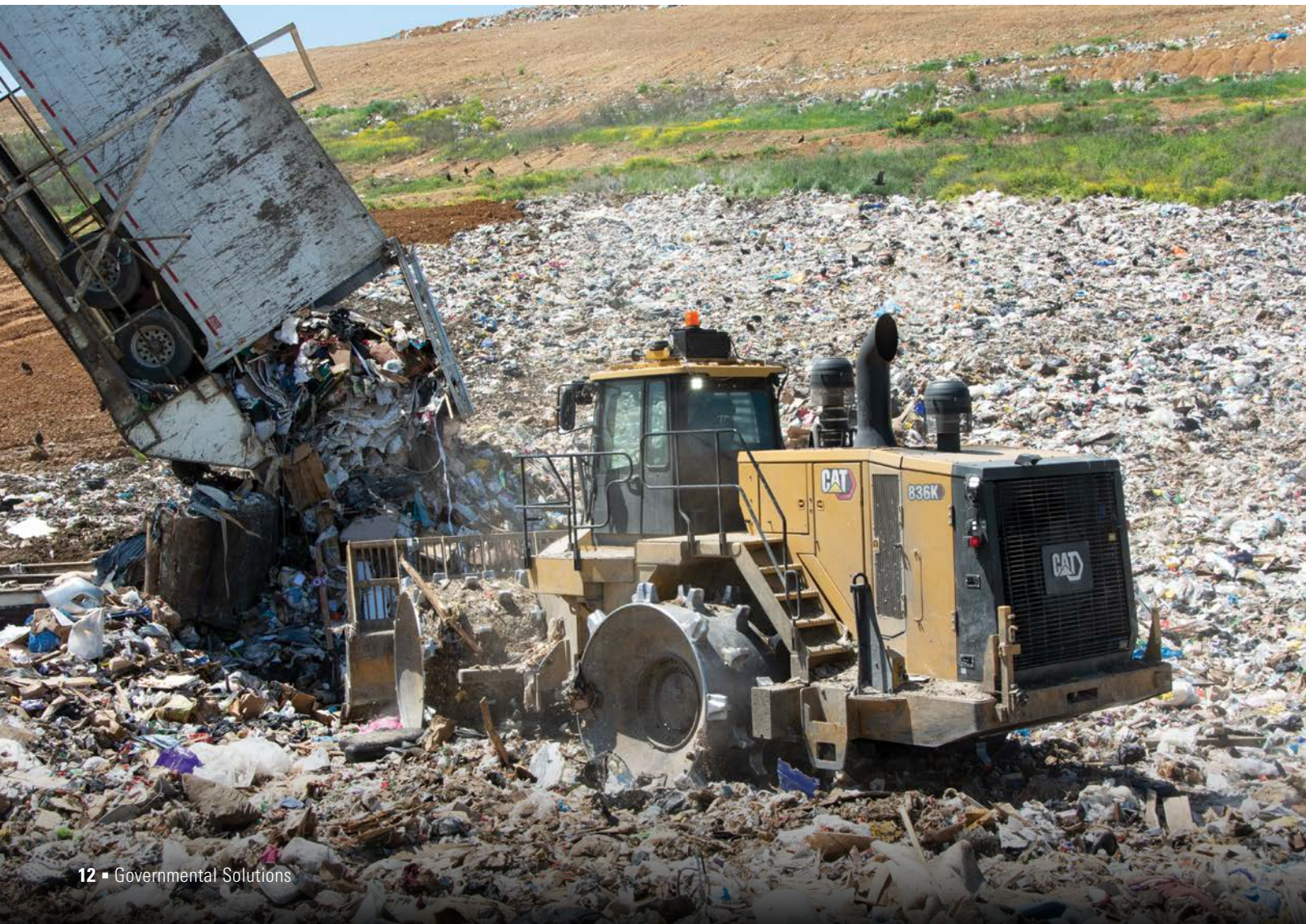
can call one day and have the parts in the box the next morning. Even with special orders coming out of Atlanta, we receive the parts overnight.”

And Thompson services what they sell. When Thompson sells a new machine, a whole team accompanies the delivery. Thompson experts walk Smith County’s operators through each of the machine’s operating features to ensure that they’re able to maximize productivity and realize the full potential built into the machine.

“They will go through the machine and walk you through it step-by-step,” Lee says. “And they’ll stay with you when we’re putting it in the trash or dirt and operating it.

“I think the biggest thing with Thompson is the excellent service and outstanding parts availability that we receive,” Lee concludes.

“If we’re out here working on something and my maintenance guy gets into an area he’s not 100 percent up to speed on, he can actually talk to one of Thompson’s guys and they’ll help walk him through it—and that says a whole lot.”





# COVERAGE YOU CAN COUNT ON

**PROTECT YOUR CAT® MOTOR GRADER WITH THE RIGHT LEVEL OF COVERAGE—RIGHT WHEN YOU NEED IT.**

### ***Pro Equipment Protection Plan (EPP) Coverage for Governmental Agencies***

Get extensive coverage for your Cat® Motor Grader\*, designed specifically to protect select connectivity, technology, powertrain, hydraulics, certain electrical, and other select major components. Pro EPP helps to ensure your machine is protected beyond the Standard Machine Warranty for parts and labor and protects you from unplanned repair costs from covered defects in Cat material and manufacturer workmanship.

### **PRO COVERAGE**

- > Get the extensive coverage of Powertrain + Hydraulics + Technology EPP plus additional protection for such major components as wiring harnesses and certain electrical components
- > Currently available for governmental purchases on Cat Motor Graders\*
- > No deductible

*Note: These are examples of covered components or items. See your participating Cat dealer for a complete list of covered and excluded components and more information.*

### **EPP BENEFITS**

- > Protect your equipment investment beyond the Standard Machine Warranty.
- > Make sure repairs are done right the first time with factory-trained technicians using genuine Cat parts.
- > Plan with confidence because you can better predict repair costs.
- > Transferable coverage that could help increase your equipment's resale value.

- > Flexible terms that can be customized to your expected equipment utilization to keep protection costs low.

### **Why EPP?**

- > **EXTENSIVE COVERAGE:** EPP provides valuable protection for defects in Cat material and manufacturer workmanship beyond the expiration of your original warranty period, helping you manage major repair costs.
- > **LOCAL EXPERTISE:** Trained technicians at more than 2,500 Caterpillar authorized service locations have the experience, training, and tools to repair your Cat equipment quickly and accurately.
- > **PEACE OF MIND:** EPP helps you manage risk and protect your livelihood.
- > **ONE-STOP SHOPPING:** You can rely on us for equipment and protection — all backed by the power of Caterpillar.

**Contact our dealership for more details or visit [www.catfinancial.com](http://www.catfinancial.com)** 

*\*Pro EPP currently only available in the U.S. and Canada on governmental purchases of Cat Motor Graders (excludes the following models: 16, 18 and 24).*



# CAT® CERTIFIED REBUILDS

## COST-EFFECTIVE OPTIONS FOR REBUILDING YOUR CAT MACHINE

The approach of winter—a time when your agency may operate on a reduced schedule—is a great time to consider the benefits of an equipment rebuild. Whether you have a specific piece of equipment that’s reaching the end of its overall lifecycle, want to improve a specific core system or simply learn about the available options, understanding the value of rebuilding your Cat® equipment helps you make more informed choices.

When you choose a rebuild, your agency can greatly extend the useful life of equipment for a lower cost than purchasing a new machine.

### Breaking down the rebuild process

Every rebuild is unique to the application and piece of equipment involved, but the major benefit of this process is a cost-effective alternative to buying new equipment. Because Cat machinery is designed with more than one functional lifecycle in mind, a rebuild can be an especially good decision in terms of service life and affordability.

Our dealership works with certified technicians who have the know-how, skills and expertise to consistently and confidently rebuild your equipment. That’s true whether it’s a dozer, wheel loader, another type of Cat equipment or a major component of your Cat machine.

### Understanding the Cat certified rebuild program

Cat Certified Rebuilds are an effective option for rebuilding your machinery, offering an exceptionally high level of service

and expertise for this detailed project. We offer five options designed to align with your specific objectives:

- 1) CERTIFIED REBUILD:** This option is the most extensive: a complete rebuild that covers the entire machine. Any worn or damaged parts are replaced while introducing critical engineering updates that further boost performance.
- 2) CERTIFIED HYDRAULIC REBUILD:** When the rest of your equipment is functioning properly, this option enables you to update and refresh the hydraulics—a key improvement for a variety of machines.
- 3) CERTIFIED POWERTRAIN REBUILD:** A power train rebuild covers everything from the radiator to wheels and sprockets, extending your machine’s useful life and restoring performance.
- 4) CERTIFIED ENGINE REBUILD:** An engine rebuild maximizes your investment in the durability and performance you’ve come to expect from Cat equipment.
- 5) CERTIFIED MACHINE COMPONENT REBUILD:** This option focuses on restoring transmissions, torque converters, axle assemblies, final drives and similar components.

With support from the largest dealer and parts distribution network in the world and effective warranties and coverage, you can be confident that your rebuild will significantly

extend the lifecycle of your equipment. Caterpillar carefully engineers multiple lives into every piece of Cat equipment. The Certified Rebuild program enables you to take full advantage of this design specification.

### Consider a rebuild right now

An equipment rebuild can be a great option for your agency regardless of time of year. But the transition from fall to winter can offer some unique benefits in terms of rebuilding equipment that aren't available during the warmer times of the year, when many agencies that use equipment have the heaviest workloads. Let's look at 10 reasons why you should consider a rebuild option sooner than later:

- 1) PUT YOUR REBUILT EQUIPMENT TO WORK AS SOON AS POSSIBLE:** The sooner you start the rebuild process, the sooner certified technicians can do their jobs and return your equipment to you. That means it's back on the job quickly, ready to work on your next project.
- 2) TAKE ADVANTAGE OF THE SLOW SEASON:** If your agency doesn't do as much work during the winter, you can have your equipment rebuilt with minimum disruption to your operations.
- 3) CONSIDER YOUR OPTIONS:** Not sure if agency equipment needs a total rebuild or a more specific rebuild on a certain system? You can do the legwork, make your decision and contact our dealership to get your project started.
- 4) EFFECTIVELY UTILIZE EMPLOYEE SKILLS AND EXPERIENCE:** You know your staff is qualified to operate your current fleet of equipment. A rebuild

means no downtime for training on new systems or adjustment periods before operators are ready to go to work.

- 5) BUDGET BETTER:** Making a decision now enables you to make choices about budget needs and understand how a Certified Rebuild can save money versus buying new equipment.
- 6) PLAN FARTHER OUT:** Worried about downtime? An equipment rebuild helps you make plans far into the future about resource allocation with the confidence that a thoroughly refurbished piece of equipment offers.
- 7) START A LONGER PROCESS:** Does your agency have several pieces of heavy equipment that are candidates for Certified Rebuilds? Start the first project now and see benefits as soon as your machinery is returned to you.
- 8) AVOID A NEW EQUIPMENT PURCHASE:** New equipment is undoubtedly effective, but can also be expensive. If your agency isn't ready to take this step, a Certified Rebuild can be exactly what you need.
- 9) KEEP YOUR WORKERS HAPPY:** Allow your staff to do what they do best with the equipment that they're most comfortable using.
- 10) FIND EFFECTIVE FINANCING OPTIONS:** Cat Financial offers financing that helps you budget for and realize the benefits of rebuilt equipment, helping to spread out the cost of the project.

***Contact our dealership to investigate current offers that can help with your machine rebuild. 📞***



# THE CHOICE IS YOURS.

NEXT GENERATION CAT®  
SMALL AND WHEEL EXCAVATORS.

The Next Generation Cat® Small and Wheel Excavator range offers you the most versatile machines to get the job done.

The range includes:

- **M320 Wheel Excavator.** Quick, powerful and easy to operate, it travels easily on the road between projects.
- **315 GC Excavator.** High performance and outstanding operator comfort at a lower cost per hour.
- **317 Excavator.** A precision machine that delivers amazing performance and leading technology.
- **317 GC Excavator.** Powerful and adaptable, it can be easily transported on a trailer behind your truck.

To find out more, talk to your local Cat dealer or visit [Cat.com](http://Cat.com).



**CAT**®  
LET'S DO THE WORK.