

# 428

## BACKHOE LOADER



**Engine Power**

68.5 kW or 74.5 kW Tier 2 Equivalent  
70 kW or 74.5 kW Tier 3 Equivalent

**Operating Weight**

8275 kg

**Dig Depth**

4778 mm/5700 mm (E-Stick)

**Loader Breakout Force**

54.8 kN

**Controls**

Mechanical Loader  
Mechanical Hoe (Pilot Hoe Optional)





## NEW MACHINES, ORIGINAL DNA

The first Cat® backhoe loader (BHL) hit the road in 1985. The machine was co-developed by a team of designers in Illinois, U.S. and a manufacturing team in Desford, UK. The machines are still designed by experts to meet the needs of today's operators. Every model provides reliability, power and a top-quality operator environment to see you through the toughest projects. The latest backhoe loader range is crafted from 35 years of passion, expertise and experience.

# THE NEW CAT® 428

TAKE CONTROL IN YOUR NEW  
BACKHOE LOADER



### MORE CONTROL FOR YOU

- + **EFFICIENT AND POWERFUL** – POWERED BY A CHOICE OF CAT ENGINES, THIS MACHINE IS DESIGNED TO BE EFFICIENT WITH FUEL WHILST GIVEN THE POWER YOU NEED. HELPING YOU TO BE BOTH PRODUCTIVE WHILST KEEPING YOUR OWNING AND OPERATING COSTS AS LOW AS POSSIBLE.
- + **PILOT CONTROLS** – OPERATE IN COMFORT WITH THE OPTIONAL PILOT HOE CONTROLS GIVING MORE COMFORT AND CONTROL THAN EVER BEFORE.
- + **MORE VERSATILITY** – WITH A HUGE RANGE OF COUPLER AND WORKTOOL OFFERINGS YOUR BACKHOE IS MORE VERSATILE THAN EVER BEFORE.
- + **EASY TO OWN AND OPERATE** – WITH MONTHLY PAYMENT OPTIONS, GREAT FUEL EFFICIENCY AND BEST-QUALITY PARTS AND ENGINEERING, IT'S EASIER AND MORE AFFORDABLE THAN EVER TO OWN AND OPERATE A CAT BACKHOE LOADER (BHL).

# POWERFUL LOAD SENSING HYDRAULIC SYSTEM



---

## FLOW-SHARING VALVES

Actively manage the flow of oil between each function of the machine. When the operator demands multiple operations the machine responds, providing smooth, effortless operation.

---

## MORE LIFTING PERFORMANCE

The option of a larger boom cylinder is available on the 428 giving increased lifting performance against the standard boom cylinder. This option is available with either mechanical or pilot controls.

---

## VARIABLE DISPLACEMENT PISTON PUMP

A high capacity variable displacement piston pump allows for perfect matching of power and operator demand, providing power when it is needed whilst contributing to great fuel economy.



# BACKHOE

BUILT FOR THE TASK



## HIGH-ROTATION LINKAGE

---

The Cat backhoe linkage provides an industry-leading 205 degrees of bucket rotation. This design helps with material retention when truck loading and with vertical wall-trenching. Improved performance and efficiency are achieved by the ability to do more with less movement.

## EXCAVATOR-STYLE BOOM

---

Whether close-up truck loading or digging over obstacles, the iconic excavator-style boom tackles the toughest jobs with ease. Combine this versatility with powerful breakout forces, controllability, a powerful hydraulic system and the 428 is capable of high levels of productivity with minimum effort. The boom is a narrow design, ensuring maximum visibility to the attachment and ground.

## CAT CUSHION SWING

---

The standard Cat Cushion Swing System smooths the backhoe swing function when returning to the trench. Operators will immediately appreciate being able to line up the bucket edge on the trench wall faster and with more control.

## SIDE SHIFT FRAME

---

The Side Shift Frame has exterior lock clamps, with no disassembly needed when servicing. The frame is a solid design with E-Coat protection preventing material build up in the frame, reducing the risk of rust and increasing the life of the frame.

## EXTENDIBLE STICK

---

The extendible stick comes as an option for applications where more versatility is needed. Increasing dig depth and reach capability by 922 mm reduces the amount of machine repositioning and therefore reducing site damage and increasing productivity. A sliding inner section design helps to ensure the wear pads remain as dirt free as possible, prolonging adjustment and replacement intervals. Auxiliary lines, for operating hydraulic attachments, have been routed so that they are protected from damage when working in the narrowest of trenches.

## POWERED SIDE SHIFT (OPTIONAL)

---

Available as an option either from the factory or as a dealer fitted kit, the powered side shift solution provides a hydraulic service to allow the operator to easily position the backhoe across the full width of the Side Shift Frame. Ideal for use in areas with minimal space and utility applications such as gas, electrical, and telecoms.

## POWER TRAIN

# POWERFUL, PROVEN AND EFFICIENT

## PROVEN CAT ENGINE

All Cat BHL's are powered with a proven and reliable Cat engine. There are two engine options, the EU Stage II/U.S. EPA Tier 2 equivalent Cat 3054C engine or the EU Stage IIIA/U.S. EPA Tier 3 equivalent Cat C4.4 engine with different power ratings to best suit the application. Both options deliver superior performance with best in class fuel efficiency.

## TRANSMISSIONS

The 4-speed manual transmission is standard on the 428. A 4-speed powershift transmission is available as an optional upgrade. Improved operator comfort and reduced fatigue is achieved by operation through the Power Shuttle Lever, rather than floor mounted lever, to shift gears. For those operators doing a lot of roading the auto shift transmission with lock-up torque converter is an ideal option as it can give up to 15% fuel efficiency savings on the road whilst maintaining travel speed in hilly environments.

## AXLES AND DIFFERENTIAL LOCK

Heavy duty axles and a 100% locking rear differential come as standard on Cat backhoe loaders. The axles provide high durability whilst providing superb traction on uneven surfaces. No daily greasing is required on the front axle helping to save both time and money, keeping owning and operating costs as low as possible. The Diff-lock improves performance by giving maximum traction in all conditions.



# LOADER PERFORMANCE

## MAKING LIGHT WORK OF LIFTING AND LOADING



### PARALLEL LIFT

---

Parallel lift loader arms offer excellent forward visibility and self-leveling, ensuring excellent material retention throughout the lift and lower cycles.

### RIDE CONTROL

---

This option offers loader suspension to improve operator comfort and productivity. When moving around the job site or transporting the machine on the road, ride control provides extra stability which creates an easier ride for the operator and helps material retention to improve operator efficiency.

### RETURN TO DIG

---

Return to Dig allows the operator to return the bucket to a preset level, this is great for applications with repetitive work cycles especially when working with forks.

### IT QUICK COUPLER

---

This option is available from the factory or as a kit, providing the extra versatility needed when working in multiple applications. This coupler allows a quick and safe change between multiple attachments from the inside of the cab.



# THE CLASS LEADING OPERATOR ENVIRONMENT JUST GOT BETTER

## YOUR OFFICE YOUR RULES

### MACHINE SECURITY SOFTWARE

The optional keypad security system is specifically designed for use with Cat backhoe loaders. This device helps keep your machine safe and can hold up to 25 unique codes for operators. The system can even be added at a later date if not initially equipped on your machine.



### OPERATOR COMFORT

To reduce operator fatigue and increase efficiency, the air suspension seat comes as standard with switches and controls being ergonomically located within reach of the operator. Diff-Lock button, Transmission neutraliser and auxiliary controls are all located on the loader control joystick giving power and control at the operator's fingertips. Great visibility allows the operator to get the job done in a safe and efficient manner.



### HOE PILOT CONTROLS

Hoe Pilot controls are available as an option on the 428. These are mounted on fully adjustable pods that the operator can position to their preference. These controls increase operator comfort by having them located in the most ergonomic position as well as being easier and smoother to operate than the standard mechanical controls. The loader control will remain mechanical.



# ATTACHMENTS

A WIDE RANGE OF CAT ATTACHMENTS ARE AVAILABLE TO MEET THE NEEDS OF YOUR JOB SITE APPLICATIONS.

---

Our attachments are engineered, balanced and tested to each Cat backhoe loader model, promising to minimize stress and optimize performance.

---

## LOADER BUCKETS

General Purpose loader buckets are available as well as the hydraulically operated Multi-Purpose bucket.

### OTHER AVAILABLE LOADER TOOLS INCLUDE:

- + BROOMS
- + MATERIAL HANDLING ARMS
- + TRUSS BOOMS
- + FORKS
- + BLADES



---

## EXCAVATING BUCKETS

Cat Attachments provide a range of buckets in various sizes. It is easy to find the correct bucket for the application with a range including:

- + STANDARD DUTY
- + HEAVY DUTY
- + HIGH CAPACITY HD
- + DITCH CLEANING
- + CRIBBING
- + GRADING

### OTHER AVAILABLE BACKHOE TOOLS INCLUDE:

- + COLD PLANERS
- + HAMMERS
- + AUGERS
- + VIBRATORY COMPACTION PLATES
- + RIPPER



---

## BACKHOE QUICK COUPLER

Manual or hydraulic backhoe couplers make rear tool exchange quick, easy and safe. Cat dual-lock couplers have a self-adjusting wedge design to ensure a tight fit. They also feature a safety lock which automatically engages.



EASY TO OPERATE

# EASY TO MAINTAIN

## DAILY SERVICE POINTS

Caterpillar understands that the easier a task is the more likely it is to be done. We have ensured that servicing the Cat backhoe loader is as simple as it can be. All daily check points are grouped together and are easy to access from a large service platform.

## HINGED COOLING PACK

The hood opens to reveal the engine and a unique Cat designed hinged cooling pack. The air conditioning pack lifts up and the radiator tilts forward with no tooling required, giving easy access for debris removal whether you are in the workshop or on a job site, keeping optimal cooling performance.

## WEAR PAD ADJUSTMENTS

The Extendible Stick (E-Stick) is designed to be self-lubricating, to minimize the need for operator interaction. The stabilizers and E-Stick all have easily adjustable wear pads that require no disassembly. When wear pad adjustments are necessary, the adjustment bolts are easy to access, taking minutes to complete.

## CAT FILTERS

All Cat filters are vertically mounted for spill free servicing and reduced oil contamination. These low micron filters remove microscopic particles from the oil, keeping the engine, transmission and hydraulic system running smoothly for years.

## A-PIN GREASING

A-Pin grease point has been relocated to give ground level access without needing access to the engine bay, reducing time spent maintaining the machine.

## BATTERY/STORAGE BOX

The batteries and battery disconnect switch are conveniently located in the external right hand side lockable storage box for easy access. The box also leaves sufficient space to be able to store grease gun, spanner, etc.



# YOUR MACHINE

## YOUR SUPPORT



### MACHINE SELECTION

---

Your dealer can help you with your machine purchase decision, based on your requirements and help keep operating costs to a minimum. Is the machine you have in mind exactly the best for your job, or could there be a more suitable solution?

### CUSTOMER VALUE AGREEMENTS (CVA'S)

---

Your Cat dealer can offer a comprehensive range of CVA's which can be individually tailored to suit your requirements. Dealers can offer a range of options from a full preventative maintenance with S·O·S<sup>SM</sup> package to a parts only CVA. Protect your valuable investment and know exactly what your monthly payments will be to help you run your business.

### EQUIPMENT PROTECTION PLAN (EPP)

---

You count on your Cat machines to get the job done, day in and day out. Choose a protection plan that's just as dependable and long-lasting. EPP offers the only coverage designed specifically for new Cat equipment – giving you the highest level of repair cost protection available. Talk to your dealer today to find out what EPP solution is the best for you!

### FINANCE

---

Have you explored the range of options available from your dealer to finance your machine? They can offer a selection of attractive packages tailored to suit your every requirement.

### TRAINING AND SUPPORT

---

Speak to your dealer about any additional support you may need. They can give you the latest in operating techniques to minimize wear and tear, maximize productivity, lower owning and operating costs and help you make the most of the fantastic features offered on the Cat backhoe loaders.

### PRODUCT LINK™

---

Product Link™ comes as standard on all Cat BHL (dependent on local regulations). Cat Product Link offers service meter hours and location, helping you to keep control of your machine.



# TECHNICAL SPECIFICATIONS

See *cat.com* for complete specifications.

ENGINE	TIER 2 EQUIVALENT (STANDARD)	TIER 2 EQUIVALENT (OPTIONAL)	TIER 3 EQUIVALENT (OPTIONAL)	TIER 3 EQUIVALENT (OPTIONAL)
<b>Engine</b>	3054C 68.5 kW Mechanical Turbo	3054C 74.5 kW Mechanical Turbo	C4.4 70 kW Mechanical Turbo Intercooled	C4.4 74.5 kW Mechanical – Turbo Intercooled
<b>Ratings at 2,200 rpm</b>				
<b>Gross Power SAE J1995:2014</b>	69 kW/94 hp	75 kW/102 hp	71 kW/97 hp	76 kW/104 hp
<b>Engine Power ISO 14396:2002</b>	68 kW/93 hp	74 kW/101 hp	70 kW/95 hp	75 kW/101 hp
<b>Net Power Rating @ 2,200 rpm</b>				
<b>SAE J1349:2011</b>	64 kW/87 hp	70 kW/95 hp	65 kW/88 hp	69 kW/94 hp
<b>ISO 9249:2007</b>	65 kW/88 hp	71 kW/96 hp	65 kW/89 hp	70 kW/95 hp
<b>Torque Rise (net)</b>	38% @ 1,400 rpm	31% @ 1,400 rpm	37% @ 1,400 rpm	32% @ 1,400 rpm
<b>Net Torque – SAE J1349</b>	384 N·m	397 N·m	383 N·m	398 N·m
<b>Bore</b>	105 mm	105 mm	105 mm	105 mm
<b>Stroke</b>	127 mm	127 mm	127 mm	127 mm
<b>Displacement</b>	4.4 L	4.4 L	4.4 L	4.4 L

- Net power advertised is the power available at the flywheel when the engine is equipped with fan, air cleaner, muffler and alternator.
- Advertised power is tested per the specified standard in effect at the time of manufacture.

TRANSMISSION	POWER SHUTTLE TRANSMISSION (STANDARD)	POWERSHIFT TRANSMISSION (OPTIONAL)	AUTO-SHIFT TRANSMISSION AND AUTO-SHIFT TRANSMISSION WITH LOCK-UP TORQUE CONVERTER
Travel speeds of backhoe loader at full throttle, when equipped with 480/80-28 rear tires.			
<b>Forward</b>			
<b>1st</b>	6 km/h	6 km/h	6 km/h
<b>2nd</b>	9 km/h	10 km/h	10 km/h
<b>3rd</b>	21 km/h	20 km/h	12 km/h
<b>4th</b>	37 km/h	40 km/h	20 km/h
<b>5th</b>	—	—	27 km/h
<b>6th</b>	—	—	40 km/h
<b>Reverse</b>			
<b>1st</b>	6 km/h	6 km/h	6 km/h
<b>2nd</b>	9 km/h	12 km/h	12 km/h
<b>3rd</b>	21 km/h	27 km/h	27 km/h
<b>4th</b>	37 km/h	—	—

# TECHNICAL SPECIFICATIONS

See *cat.com* for complete specifications.

AXLE RATINGS	
<b>Front Axle, AWD</b>	
Static	23 500 kg
Dynamic	9000 kg
<b>Rear Axle</b>	
Static	26 500 kg
Dynamic	10 000 kg

WEIGHTS*	
Operating Weight (estimated)	8275 kg
Operating Weight (maximum) (ROPS capacity)	11 000 kg
Cab, ROPS/FOPS	Standard
Auto-Shift Transmission	96 kg
Ride Control	15 kg
Air Conditioning	45 kg
MP Bucket (1.03 m <sup>3</sup> )	
with Fold-over Forks	860 kg
without Fold-over Forks	674 kg
Loader QC	185 kg
Extendible Stick	208 kg
Counterweights	
Base	115 kg
Stackable, One	250 kg
Maximum	485 kg
<b>Minimum Counterweight Recommendations – Standard Stick</b>	
Loader Bucket	
GP	115 kg
MP	0 kg
<b>Minimum Counterweight Recommendations – Extendible Stick</b>	
Loader Bucket	
GP	460 kg
MP	0 kg
<b>Total Gross Weight Not to Exceed</b>	<b>11 000 kg</b>

\*Machine Configuration – Standard LRC engine; standard stick hoe; standard cab with A/C; AWD standard shift transmission; 1.03 m<sup>3</sup> MP loader bucket; 610 mm standard duty hoe bucket; 340/80-18 and 480/80-28 tires; no counterweight; One Way Aux Lines; AWD Guard; Front Fenders; HD Battery; 80 kg operator; full fuel tank.

HYDRAULIC SYSTEM	
Type	Closed Center
Pump Type	Variable-Flow, Axial Piston
Pump Capacity @ 2,200 rpm	160 L/min
<b>System Pressure</b>	
Backhoe	250 bar
Loader	250 bar

STEERING	
Type	Front Wheel
Power Steering	Hydrostatic
<b>AWD Cylinder, One (1) Double-acting</b>	
Bore	65 mm
Stroke	106 mm
Rod Diameter	40 mm
<b>Turning Circle</b>	
Outside Front Wheels	8205 mm
Outside Widest Loader Bucket	10 745 mm

SERVICE REFILL CAPACITIES	
Cooling System with A/C	18 L
Fuel Tank	160 L
Engine Oil with Filter	9 L
Transmission (Power Shuttle)	18 L
Transmission (Powershift/Autoshift)	19 L
Rear Axle	16 L
Planetaries	1.7 L
Front Axle	11 L
Planetaries	0.7 L
Hydraulic System	95 L
Hydraulic Tank	42 L

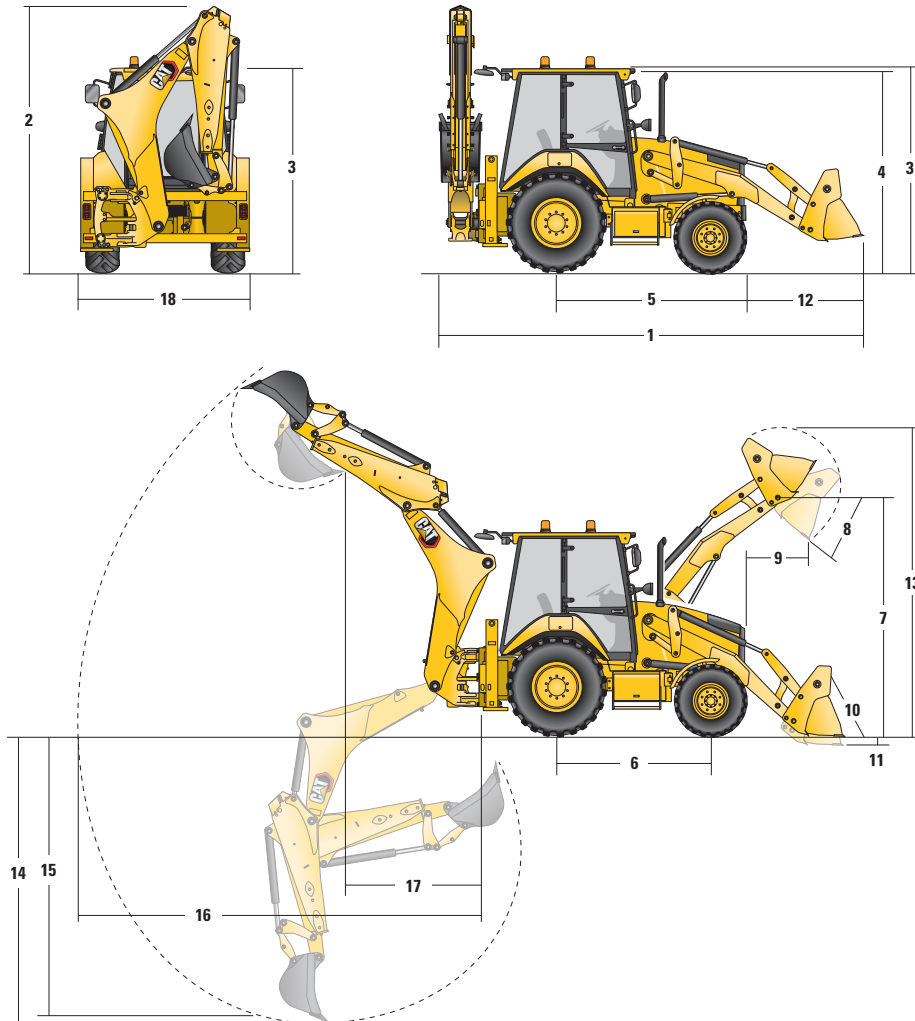
(continued on next page)



# TECHNICAL SPECIFICATIONS

See [cat.com](http://cat.com) for complete specifications.

## MACHINE DIMENSIONS



	Parallel Lift Loader			Narrow Parallel Lift Loader		Parallel Lift Loader with QC	
	GP – 1.0 m <sup>3</sup>	MP – 1.03 m <sup>3</sup>	MP with Forks – 1.03 m <sup>3</sup>	GP – 0.96 m <sup>3</sup>	MP – 0.96 m <sup>3</sup>	GP/QC – 1.0 m <sup>3</sup>	MP/QC – 1.03 m <sup>3</sup>
<b>1</b> Overall Length in Rooding Position	5763 mm	5744 mm	5744 mm	5796 mm	5741 mm	5847 mm	5760 mm
Overall Transportation Length	5775 mm	5731 mm	5731 mm	5819 mm	5728 mm	5884 mm	5778 mm
<b>2</b> Overall Transportation Height	3806 mm	3806 mm	3806 mm	3806 mm	3806 mm	3806 mm	3806 mm
Overall Width (excluding loader bucket)	2352 mm	2352 mm	2352 mm	2241 mm	2241 mm	2352 mm	2352 mm
<b>3</b> Height to Top of Cab/Canopy	2822 mm	2822 mm	2822 mm	2822 mm	2822 mm	2822 mm	2822 mm
<b>4</b> Height to Top of Exhaust Stack	2715 mm	2715 mm	2715 mm	2715 mm	2715 mm	2715 mm	2715 mm
<b>5</b> Rear Axle Centerline to Front Grill	2705 mm	2705 mm	2705 mm	2705 mm	2705 mm	2705 mm	2705 mm
<b>6</b> Wheelbase 2WD/AWD	2200 mm	2200 mm	2200 mm	2200 mm	2200 mm	2200 mm	2200 mm

Dimensions and performance specifications shown are for machines equipped with 340/80-18 front tires, 440/80-28 rear tires, Std Cab, E-Stick, 610 mm standard duty bucket, and 1.03 m<sup>3</sup> MP loader bucket and standard equipment unless otherwise specified.

# TECHNICAL SPECIFICATIONS

See *cat.com* for complete specifications.

## LOADER BUCKET DIMENSIONS AND PERFORMANCE

	Parallel Lift Loader			Narrow Parallel Lift Loader		Quick Coupler	
	GP – 1.03 m <sup>3</sup>	MP – 1.03 m <sup>3</sup>	MP with Forks – 1.03 m <sup>3</sup>	GP – 0.96 m <sup>3</sup>	MP – 0.96 m <sup>3</sup>	GP – 1.03 m <sup>3</sup>	MP – 1.03 m <sup>3</sup>
<b>Capacity (SAE rated)</b>	1.03 m <sup>3</sup>	1.03 m <sup>3</sup>	1.03 m <sup>3</sup>	0.96 m <sup>3</sup>	0.96 m <sup>3</sup>	1.03 m <sup>3</sup>	1.03 m <sup>3</sup>
<b>Width</b>	2406 mm	2406 mm	2406 mm	2262 mm	2262 mm	2406 mm	2406
<b>Lift Capacity at Maximum Height</b>	3728 kg	3488 kg	3303 kg	3738 kg	3505 kg	3509 kg	3278 kg
<b>Lift Breakout Force</b>	54 791 N	53 252 N	51 536 N	54 379 N	53 437 N	51 669 N	50 841 N
<b>Tilt Breakout Force</b>	54 292 N	59 845 N	58 900 N	51 336 N	60 142 N	48 223 N	53 400 N
<b>Tipping Load at Breakout Point</b>	6627 kg	6604 kg	6448 kg	6488 kg	6629 kg	6092 kg	6270 kg
<b>7 Maximum Hinge Pin Height</b>	3462 mm	3462 mm	3462 mm	3462 mm	3462 mm	3462 mm	3462 mm
<b>8 Dump Angle at Full Height</b>	45°	45°	45°	45°	45°	45°	45°
<b>Dump Height at Maximum Angle</b>	2755 mm	2780 mm	2780 mm	2723 mm	2782 mm	2669 mm	2749 mm
<b>9 Dump Reach at Maximum Angle</b>	805 mm	732 mm	732 mm	837 mm	731 mm	838 mm	784 mm
<b>10 Maximum Bucket Rollback at Ground Level</b>	38°	39°	39°	38°	39°	39°	38°
<b>11 Digging Depth</b>	99 mm	132 mm	132 mm	99 mm	131 mm	137 mm	118 mm
<b>Maximum Grading Angle</b>	113°	116°	116°	112°	116°	112°	114°
<b>Width of Dozer Cutting Edge</b>	N/A	2406 mm	2406 mm	N/A	2262 mm	N/A	2406 mm
<b>12 Grill to Bucket Cutting Edge, Carry Position</b>	1488 mm	1471 mm	1471 mm	1519 mm	1468 mm	1571 mm	1487 mm
<b>13 Maximum Operating Height</b>	4328 mm	4365 mm	4365 mm	4328 mm	4368 mm	4361 mm	4407 mm
<b>Weight (does not include teeth)</b>	438 kg	674 kg	860 kg	429 kg	676 kg	456 kg	693 kg

## BACKHOE DIMENSIONS AND PERFORMANCE

	Standard Stick	E-Stick Retracted	E-Stick Extended
<b>14 Digging Depth, SAE Maximum</b>	4298 mm	4301 mm	5292 mm
<b>Digging Depth, Manufacturer's Maximum</b>	4778 mm	4782 mm	5700 mm
<b>15 Digging Depth, 2400 mm Flat Bottom</b>	3915 mm	3919 mm	4987 mm
<b>Digging Depth, 600 mm Flat Bottom</b>	4255 mm	4259 mm	5254 mm
<b>Digging Depth, 600 mm Flat Bottom, Manufacturer's</b>	4753 mm	4758 mm	5700 mm
<b>Reach From Rear Axle Centerline at Ground Line</b>	6741 mm	6746 mm	7672 mm
<b>16 Reach From Swing Pivot at Ground Line</b>	5651 mm	5656 mm	6582 mm
<b>Maximum Operating Height</b>	5665 mm	5666 mm	6265 mm
<b>Loading Height</b>	3991 mm	4000 mm	4599 mm
<b>17 Loading Reach</b>	1690 mm	1639 mm	2501 mm
<b>Swing Arc</b>	180°	180°	180°
<b>Bucket Rotation</b>	205°	205°	205°
<b>Stabilizer Spread</b>	1894 mm	1894 mm	1894 mm
<b>18 Stabilizer Overall Width</b>	2352 mm	2352 mm	2352 mm
<b>Stabilizer Spread, Transport Position</b>	1894 mm	1894 mm	1894 mm
<b>Bucket Dig Force</b>	63 447 N	63 419 N	63 419 N
<b>Stick Dig Force</b>	36 232 N	36 899 N	26 976 N



# STANDARD & OPTIONAL EQUIPMENT

Standard and optional equipment may vary. Consult your Cat dealer for details.

CAB ROPS AND FOPS	STANDARD	OPTIONAL
Cab, Standard	•	
Cab, Deluxe		•
Canopy, Plus		•

TIRES/STEERING/BRAKES	STANDARD	OPTIONAL
All Wheel Drive	•	
100% Differential Lock	•	
Hydraulic Boosted Brakes	•	
Tires 26 inch	•	
Tires 28 inch		•

ENGINE/TRANSMISSION	STANDARD	OPTIONAL
Engine, 3054C T2 68.5 kW	•	
Engine, 3054C T2 74.5 kW		•
Engine, C4.4 T3 70 kW		•
Engine, C4.4 T3 74.5 kW		•
Battery, 750 CCA, Standard	•	
Battery, 750 CCA, Heavy Duty		•
Hinged Radiator Pack	•	
Differential Lock	•	
Engine Block Heater		•
Transmission Neutralizer	•	
Transmission, Four Speed Manual	•	
Transmission, Four Speed Powershift		•
Transmission, Six Speed Automatic		•
Transmission, Six Speed with Lock-Up Torque Converter		•

CONTROLS	STANDARD	OPTIONAL
Controls, Mechanical Levers	•	
Controls, Pilot Hoe Joysticks		•
Pattern Selector (ISO/SAE)		•
Power Steering, Hydrostatic	•	

ELECTRICAL	STANDARD	OPTIONAL
Product Link Cellular	•	
Product Link Satellite		•
Reversing Alarm	•	
Stabilizer Alarm	•	
Beacon, Rotating		•
Beacon, Strobe		•

HYDRAULICS	STANDARD	OPTIONAL
Variable Displacement Piston Pump	•	
Hydraulic Quick Disconnects		•
Side Shift Lock	•	
Hydraulic Oil Cooler	•	
Hydraulic Lines, One Way		•
Hydraulic Lines, Two Way		•
Loader Kickout, Float	•	
Loader Kickout, Return to Dig	•	
Powered Side Shift		•
Ride Control		•
Continuous Flow		•
Programmable Auxiliary Flow		•

BOOMS, STICKS AND LINKAGES	STANDARD	OPTIONAL
Stick Standard, 4.3 m	•	
Stick Extending, 4.3 m		•
Hoe Quick Coupler, Mechanical		•
Hoe Quick Coupler, Hydraulic		•
Loader Quick Coupler, Hydraulic		•
Transport Lock, Swing	•	
Transport Lock, Boom	•	

OTHER ATTACHMENTS	STANDARD	OPTIONAL
Counterweight, 115 kg		•
Counterweight, 240 kg		•
Counterweight, 460 kg		•
Front Fenders		•
Street Pads, Stabilizers		•
External Tool Box	•	
Transport Tie Downs	•	

Not all features are available in all regions. Please check with your local Cat dealer for specific offering availability in your area.

For additional information, refer to the Technical Specifications brochure available at [www.cat.com](http://www.cat.com) or your Cat dealer.

For more complete information on Cat products, dealer services and industry solutions, visit us on the web at [www.cat.com](http://www.cat.com)

© 2021 Caterpillar. All Rights Reserved.

Materials and specifications are subject to change without notice. Featured machines in photos may include additional equipment. See your Cat dealer for available options.

CAT, CATERPILLAR, LET'S DO THE WORK, their respective logos, "Caterpillar Corporate Yellow," the "Power Edge" and Cat "Modern Hex" trade dress as well as corporate and product identity used herein, are trademarks of Caterpillar and may not be used without permission.  
[www.cat.com](http://www.cat.com) [www.caterpillar.com](http://www.caterpillar.com)

AEHQ8393  
Build Number: 07  
(AME, CIS, ANZP,  
SE Asia)

