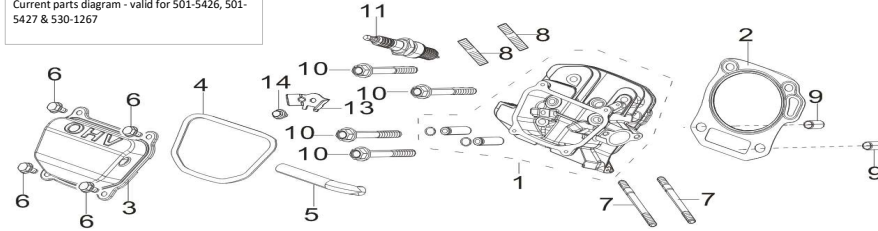


**EPA Version RP6500/RP6500E PARTS LIST**

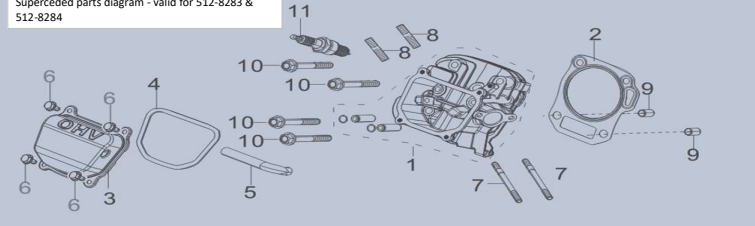
**Important Information**

The service parts list information provided within the Parts Diagram document is all inclusive of the service parts which are presently available for the defined model. Not all individual parts are serviceable at the piece part level. If an itemized part does not have a defined corresponding service part listed, the defined group level service part must be ordered.

Current parts diagram - valid for 501-5426, 501-5427 & 530-1267



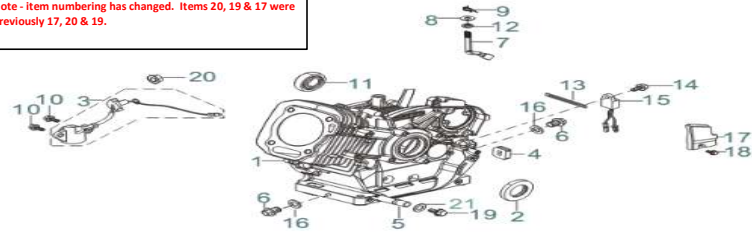
Superseded parts diagram - valid for 512-8283 & 512-8284



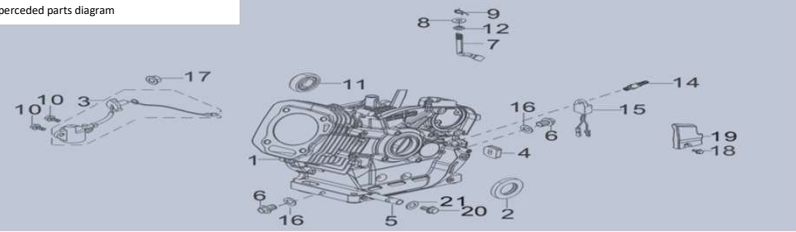
**CYLINDER ASSY.**

REF.NO.	Description	CAT Part Number	Group QTY	L mm	W mm	H mm	Weight g	Model	CAT Group Part Number	Group Name	L mm	W mm	H mm	Weight kg
3	COVER SUBASSEMBLY, CYLINDER HEAD		1	140	41	115	259.2	RP6500/RP6500E	501-5426	COVER GP-CYL HD	140	115	60	0.3518
4	GASKET, CYLINDER HEAD COVER	501-5425	1	135	112	3	4.6	RP6500/RP6500E						
6	BOLT		4	19	16	16	208	RP6500/RP6500E	530-1267	HEAD GP-CYL BSC	200	200	140	2.0523
5	TUBE, BREATHER	511-8860	1	125	17	15	16.6	RP6500/RP6500E						
1	HEAD SUBASSEMBLY, CYLINDER		1	200	200	100	1720	RP6500/RP6500E						
2	GASKET, CYLINDER HEAD	511-7251	1	140	130	2	16.5	RP6500/RP6500E						
7	STUD		2	34	8	8	10	RP6500/RP6500E						
8	STUD		2	112	9	9	30.4	RP6500/RP6500E						
9	PIN		2	20	13	13	4.5	RP6500/RP6500E						
10	BOLT, CYLINDER HEAD		4	190	20	20	51.5	RP6500/RP6500E						
11	PLUG, SPARK	511-7297	1	185	20	20	60	RP6500/RP6500E						
13	RETAINER		1					RP6500/RP6500E						
14	BOLT		1					RP6500/RP6500E	530-1256	RETAINER GP	40	40	40	0.200

Note - Item numbering has changed. Items 20, 19 & 17 were previously 17, 20 & 19.



Superseded parts diagram



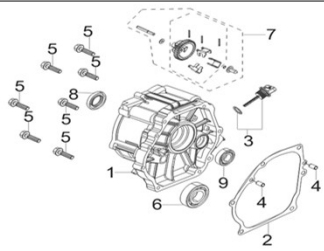
**RP6500/RP6500E CRANKCASE ASSY.**

REF.NO.	Description	CAT Part Number	Group QTY	L mm	W mm	H mm	Weight g	Model	CAT Group Part Number	Group Name	L mm	W mm	H mm	Weight kg
3	SENSOR, ENGINE OIL		1	110	50	50	45	RP6500/RP6500E	512-8285	SENSOR GP-LEVEL	110	50	70	0.0638
10	BOLT		2	15	15	15	RP6500/RP6500E							
20	NUT		1	127	90	58	RP6500/RP6500E							
7	ARM, GOVERNOR		1	115	50	50	37.8	RP6500/RP6500E	512-8286	LEVER GP-CAL	115	50	60	0.0408
8	WASHER, FLAT		1	12	12	1	1.6	RP6500/RP6500E						
9	COTTER		1	20	8	2	0.6	RP6500/RP6500E						
12	SEAL, OIL		1	16	16	5	0.8	RP6500/RP6500E						
2	SEAL, OIL		1	55	55	8	15	RP6500/RP6500E	501-5442	BEARING GP -B	55	55	25	0.055
11	BEARING, DEEP GROOVE BALL		1	40	40	13	40	RP6500/RP6500E						
1	CRANKCASE SUBASSEMBLY.		1	370	280	190	5000	RP6500E	512-8288	CRANKCASE GP	370	280	220	5.0754
4	PLUG, RUBBER		1	25	20	8	3.2	RP6500E						
5	DRAIN PIPE		1	50	14	14	30	RP6500E						
6	BOLT, DRAIN PLUG		3	23	18	7	3	RP6500E						
13	CLIP		1	100	12	2	5	RP6500E						
16	WASHER, FLAT		2	21	21	2	1	RP6500E						
19	Drain Bolt	501-5404	1	19	19	9	8	RP6500/RP6500E						
21	WASHER, FLAT		1	16	16	1.5	0.4	RP6500/RP6500E						
17	WIRE PROTECT COVER		1	23	18	7	3	RP6500E						
15	PROTECTOR, OIL		1	50	30	20	22	RP6500E						
18	BOLT		1	31	14	14	8.8	RP6500E	512-8289	COVER GP	127	90	90	0.1208
14	BOLT		1	19	16	16	208	RP6500E						



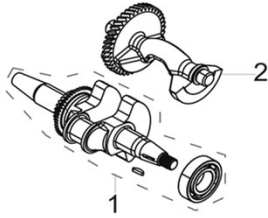
**RP6500 CRANKCASE ASSY.**

REF.NO.	Description	CAT Part Number	Group QTY	L mm	W mm	H mm	Weight g	Model	CAT Group Part Number	Group Name	L mm	W mm	H mm	Weight kg
1	CRANKCASE SUBASSEMBLY.		1	370	280	190	5000	RP6500	530-1246	CRANKCASE GP	370	280	220	5.0754
4	PLUG, RUBBER		1	25	20	8	3.2	RP6500/RP6500E						
5	DRAIN PIPE		1	50	14	14	30	RP6500/RP6500E						
6	BOLT, DRAIN PLUG		3	23	18	7	3	RP6500/RP6500E						
13	CLIP		1	100	12	2	5	RP6500/RP6500E						
16	WASHER, FLAT		2	21	21	2	1	RP6500/RP6500E						
19	Drain Bolt		1	19	19	9	8	RP6500/RP6500E						
21	WASHER, FLAT	501-5404	1	16	16	1.5	0.4	RP6500/RP6500E						
15	PROTECTOR, OIL		1					RP6500/RP6500E	530-1247	SENSOR GP	127	90	90	0.1208
17	WIRE PROTECT COVER		1					RP6500						
22	BOLT		1					RP6500						
23	NUT		1					RP6500						



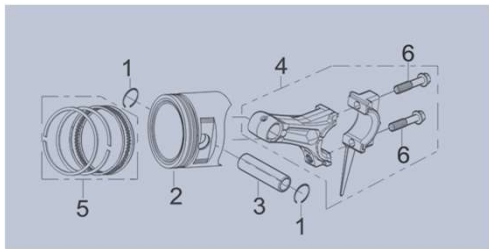
**CRANKCASE COVER**

REF.NO.	Description	CAT Part Number	Group QTY	L mm	W mm	H mm	Weight g	Model	CAT Group Part Number	Group Name	L mm	W mm	H mm	Weight kg
1	COVER, CRANKCASE		1	270	240	114	1580	RP6500/RP6500E	512-8290	COVER GP-REAR	270	240	130	1.7275
2	GASKET, CRANKCASE	511-7243	1	270	215	1	4.5	RP6500/RP6500E						
4	PIN		2	11	7	7	1.5	RP6500/RP6500E						
5	BOLT		7	50	18	18	20	RP6500/RP6500E						
6	BEARING, DEEP GROOVE BALL		1	80	80	20	280	RP6500/RP6500E	501-5443	BEARING GP -B	80	80	50	0.335
8	SEAL, OIL		1	55	55	8	15	RP6500/RP6500E						
9	BEARING, DEEP GROOVE BALL		1	40	40	13	40	RP6500/RP6500E						
3	DIPSTICK SUBASSEMBLY, OIL	501-5087	1	86	37	31	20	RP6500/RP6500E						
7	GEAR ASSY, GOVERNOR	511-8847	1	65	60	60	62.8	RP6500/RP6500E						



**CRANKSHAFT ASSY.**

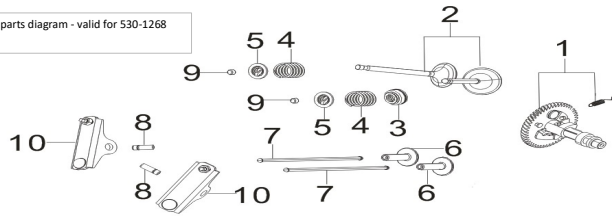
REF.NO.	Description	CAT Part Number	Group QTY	L mm	W mm	H mm	Weight g	Model	CAT Group Part Number	Group Name	L mm	W mm	H mm	Weight kg
1	CRANKSHAFT ASSY.		1	300	110	115	3860	RP6500/RP6500E						
2	SHAFT ASSY, BALANCING		1	140	90	90	760	RP6500/RP6500E	512-8292	CRANKSHAFT GP	300	115	200	4.62



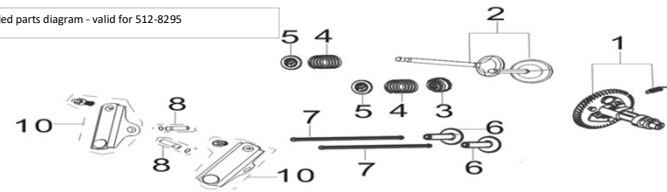
**PISTON/CONNECTING ROD**

REF.NO.	Description	CAT Part Number	Group QTY	L mm	W mm	H mm	Weight g	Model	CAT Group Part Number	Group Name	L mm	W mm	H mm	Weight kg
5	PISTON RINGS SET	511-7264	1	95	95	3	20	RP6500/RP6500E						
1	CLIP, PISTON PIN		2	25	25	1	0.4	RP6500/RP6500E						
2	PISTON		1	65	25	25	39	RP6500/RP6500E	512-8293	PISTON GP	100	100	100	0.3518
3	PIN, PISTON		1	100	100	70	312	RP6500/RP6500E						
4	ROD, CONNECTING		1	170	160	30	260	RP6500/RP6500E						
6	BOLT, CONNECTING ROD		2	44	15	15	16.5	RP6500/RP6500E	512-8294	ROD GP-CONN	170	160	45	0.293

Current parts diagram - valid for 530-1268

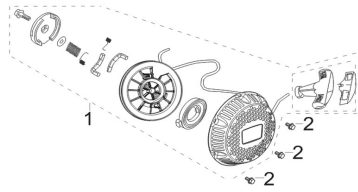


Superseded parts diagram - valid for 512-8295



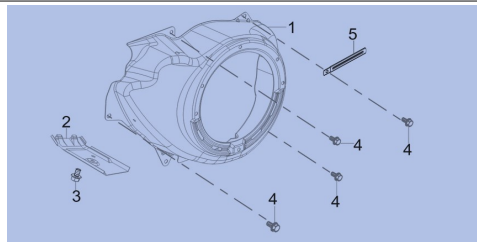
**CAMSHAFT ASSY.**

REF.NO.	Description	CAT Part Number	Group QTY	L mm	W mm	H mm	Weight g	Model	CAT Group Part Number	Group Name	L mm	W mm	H mm	Weight kg
1	CAMSHAFT ASSY.		1	125	120	120	835	RP6500/RP6500E	530-1268	CAMSHAFT GP	192	120	180	1.2628
2	VALVES SET		1	95	35	35	75	RP6500/RP6500E						
3	GUIDE SEAL		1	10	10	8	0.8	RP6500/RP6500E						
4	SPRING VALVE		2	40	25	25	14	RP6500/RP6500E						
5	SEAT VALVE SPRING		2	22	25	5	5	RP6500/RP6500E						
6	TAPPET VALVE		2	50	30	30	29	RP6500/RP6500E						
7	LIFTER SUBASSEMBLY VALVE		2	192	5	5	60.2	RP6500/RP6500E						
8	ROCKER SHAFT		2	38	10	10	12	RP6500/RP6500E						
9	ROTATOR VALVE		2	10	10	10	6	RP6500/RP6500E						
10	ROCKER ARM VALVE		2	165	25	22	109.4	RP6500/RP6500E						



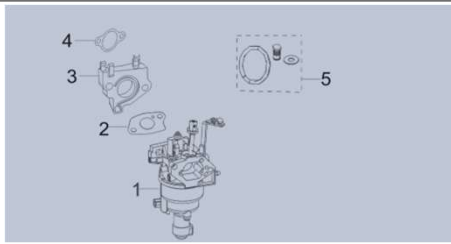
**RECOIL ASSY.**

REF.NO.	Description	CAT Part Number	Group QTY	L mm	W mm	H mm	Weight g	Model	CAT Group Part Number	Group Name	L mm	W mm	H mm	Weight kg
1	STARTER ASSY RECOIL		1	258	258	48	709.8	RP6500/RP6500E	512-8296	PULLEY GP-CSHAFT	258	258	60	0.7536
2	BOLT		3	15	15	11	14.6	RP6500/RP6500E						



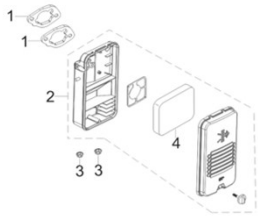
**SHROUD ASSY.**

REF.NO.	Description	CAT Part Number	Group QTY	L mm	W mm	H mm	Weight g	Model	CAT Group Part Number	Group Name	L mm	W mm	H mm	Weight kg
1	SHROUD		1	380	142	264	842.5	RP6500/RP6500E	512-8297	SHROUD GP-AIR	380	264	210	1.1001
2	SHROUD, CYLINDER BODY		1	170	55	75	120.6	RP6500/RP6500E						
3	BOLT		1	19	16	16	208	RP6500/RP6500E						
4	BOLT		5	19	16	16	208	RP6500/RP6500E						
5	CLIP		1	100	12	2	5	RP6500/RP6500E						



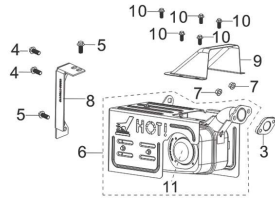
**CARBURETOR ASSY.**

REF.NO.	Description	CAT Part Number	Group QTY	L mm	W mm	H mm	Weight g	Model	CAT Group Part Number	Group Name	L mm	W mm	H mm	Weight kg
1	CARBURETOR ASSY.	511-7277	1	190	90	60	437.8	RP6500/RP6500E	512-8298	CARBURETOR GP- B	190	90	70	0.4868
2	GASKET, CARBURETOR	511-7269	1	65	43	2	1	RP6500/RP6500E						
3	PLATE, CARBURETOR INSULATOR	511-7271	1	70	16	2	47.4	RP6500/RP6500E						
4	GASKET, INLET	511-8857	1	68	38	2	0.6	RP6500/RP6500E						
5	High Altitude Kit(3000-6000ft)	501-5088	1					RP6500/RP6500E						
	High Altitude Kit(6000-8000ft)	501-5089	1					RP6500/RP6500E						



**AIR CLEANER ASSY.**

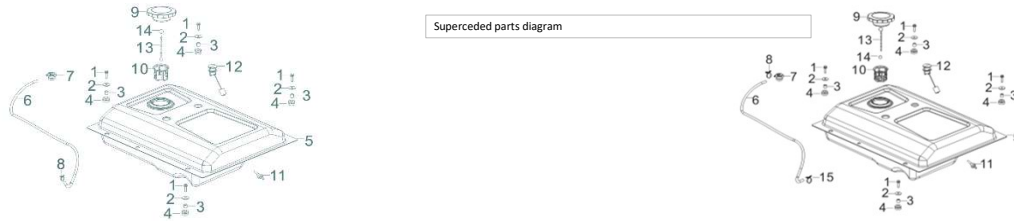
REF.NO.	Description	CAT Part Number	Group QTY	L mm	W mm	H mm	Weight g	Model	CAT Group Part Number	Group Name	L mm	W mm	H mm	Weight kg
1	GASKET, AIR CLEANER	511-7286	2	70	45	2	1.2	RP6500/RP6500E	512-8299	CLEANER GP-AIR-B	260	75	40	0.4764
2	CLEANER, AIR		1	260	15	75	448.2	RP6500/RP6500E						
3	NUT		2	15	6	15	6.8	RP6500/RP6500E						
4	FILTER, AIR CLEANER	511-7290	1	40	17	22	12.2	RP6500/RP6500E						



**RP6500/RP6500E MUFFLER ASSY.**

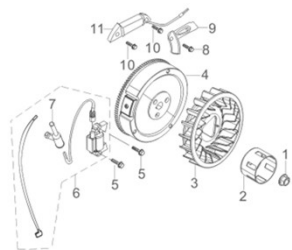
REF.NO.	Description	CAT Part Number	Group QTY	L mm	W mm	H mm	Weight g	Model	CAT Group Part Number	Group Name	L mm	W mm	H mm	Weight kg
4	BOLT		2	24	18	18	23	RP6500/RP6500E	512-8301	MUFFLER GP	280	240	280	3.8065
5	BOLT		2	24	18	18	23	RP6500/RP6500E						
8	BRACKET, MUFFLER MUFFLER		1	165	49	5	152.6	RP6500/RP6500E						
2	BOLT		2	40	18	18	31.8	RP6500/RP6500E						
6	MUFFLER ASSEMBLY		1	280	200	240	3352	RP6500/RP6500E						
7	NUT		2	13	13	7	4.6	RP6500/RP6500E						
9	Muffler Air Guide Cover		1	150	130	70	216	RP6500/RP6500E						
10	BOLT		4	18	13.5	13.5	6.5	RP6500/RP6500E						
11	SPARK ARRESTOR	501-5080	1	85	15	93	30	RP6500/RP6500E						





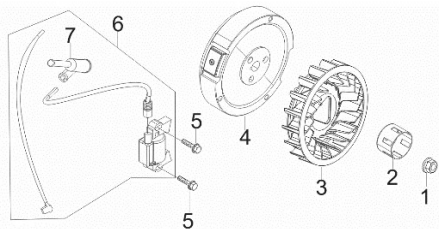
**FUEL TANK ASSY.**

REF.NO.	Description	CAT Part Number	Group QTY	L mm	W mm	H mm	Weight g	Model	CAT Group Part Number	Group Name	L mm	W mm	H mm	Weight kg
6	HOSE, FUEL STEAM RUBBER		1	870	10	10	43	RP6500/RP6500E	512-8302	VENT GP-FUEL	250	250	80	0.0704
7	ROLLOVER VALVE		1	33	50	33	24.2	RP6500/RP6500E						
8	CLAMP		1	20	8	20	1.6	RP6500/RP6500E	512-8303	CAP GP-FUEL	165	165	60	0.1952
9	FUEL CAP		1	96	40	96	189.6	RP6500/RP6500E						
13	CHAIN, FUEL CAP		1	165	10	165	5.4	RP6500/RP6500E	501-5423	TANK GP-FUEL (B)	640	510	200	6.1764
14	CLIP, FUEL CAP CHAIN		1	11	11	2	0.2	RP6500/RP6500E						
1	BOLT		4	31	14	14	8.8	RP6500/RP6500E	511-7281					
2	WASHER		4	25	2	25	27.4	RP6500/RP6500E						
3	BUSH		4	14	12	14	19	RP6500/RP6500E						
4	SLEEVE, FUEL TANK RUBBER		4	14	26	14	21	RP6500/RP6500E						
5	TANK, FUEL	511-7281	1	640	510	180	5748.2	RP6500/RP6500E						
12	LEVELER GAUGE, FUEL	501-5422	1	145	35	35	17.8	RP6500/RP6500E						
10	STRAINER, FUEL	511-8851	1	51	59	51	7.2	RP6500/RP6500E						
11	FUEL OUTLET NOZZLE	511-8853	1	54	21	21	4.2	RP6500/RP6500E						



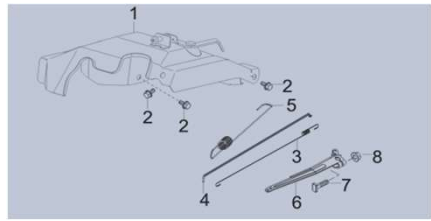
**RP6500E FLYWHEEL ASSY.**

REF.NO.	Description	CAT Part Number	Group QTY	L mm	W mm	H mm	Weight g	Model	CAT Group Part Number	Group Name	L mm	W mm	H mm	Weight kg
5	BOLT		2	35	15	15	8.6	RP6500/RP6500E	512-8305	COIL GP-IGNITION	395	50	60	0.2898
6	COIL, IGNITION		1	395	50	30	241	RP6500/RP6500E						
7	CAP, SPARK PLUG		1	85	32	22	32	RP6500/RP6500E						
1	NUT, FLYWHEEL		1	30	30	25	35.2	RP6500/RP6500E	512-8306	FLYWHEEL GP	210	210	170	6.4492
2	CUP,STARTER		1	75	75	65	191.2	RP6500/RP6500E						
3	IMPELLER		1	210	210	45	221.4	RP6500/RP6500E						
4	FLYWHEEL SUBASSEMBLY		1	210	210	58	6000	RP6500E						
8	BOLT		1	19	16	16	208	RP6500E	512-8307	CHARGER GP-BTRY	110	50	40	0.2178
9	CLAMP, CHARGE COIL		1	70	50	5	13.8	RP6500E						
10	BOLT		2	40	16	16	8.5	RP6500E						
11	COIL SUBASSEMBLY, CHARGE		1	110	28	24	165	RP6500E						



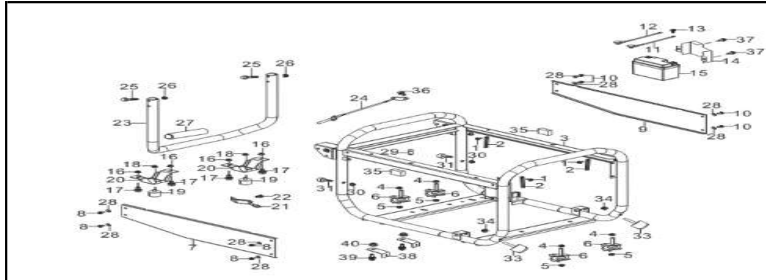
**RP6500 FLYWHEEL ASSY.**

REF.NO.	Description	CAT Part Number	Group QTY	L mm	W mm	H mm	Weight g	Model	CAT Group Part Number	Group Name	L mm	W mm	H mm	Weight kg
1	NUT, FLYWHEEL		1	30	30	25	35.2	RP6500/RP6500E	530-1248	FLYWHEEL GP	210	210	170	6.4492
2	CUP,STARTER		1	75	75	65	191.2	RP6500/RP6500E						
3	IMPELLER		1	210	210	45	221.4	RP6500/RP6500E						
4	FLYWHEEL SUBASSEMBLY		1	210	210	58	6000	RP6500						



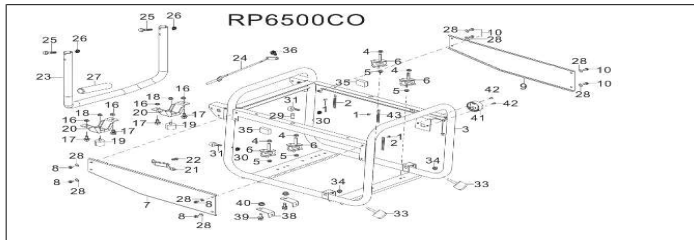
**GOVERNOR CONTROL ASSY.**

REF.NO.	Description	CAT Part Number	Group QTY	L mm	W mm	H mm	Weight g	Model	CAT Group Part Number	Group Name	L mm	W mm	H mm	Weight kg
1	CONTROL ASSY, THROTTLE		1	280	220	50	356	RP6500/RP6500E	512-8309	GOVERNOR GP -E	280	220	100	0.514
2	BOLT		3	19	16	16	208	RP6500/RP6500E						
3	SPRING, THROTTLE VALVE RETURNING		1	221	6	15	0.8	RP6500/RP6500E						
4	ROD, GOVERNOR		1	238	10	10	7.6	RP6500/RP6500E						
5	SPRING, GOVERNOR	511-7275	1	137	12	12	23.6	RP6500/RP6500E						
6	SUPPORT SUBASSEMBLY, GOVERNOR		1	180	42	15	50.4	RP6500/RP6500E						
7	BOLT, GOVERNOR SUPPORT		1	25	13.5	25	2.8	RP6500/RP6500E						
8	NUT		1	15	6	15	6.8	RP6500/RP6500E						



**RP6500E FRAME ASSY.**

REF.NO.	Description	CAT Part Number	Group QTY	L mm	W mm	H mm	Weight g	Model	CAT Group Part Number	Group Name	L mm	W mm	H mm	Weight kg
1	BOLT		3	18	13.5	13.5	6.5	RP6500/RP6500E	512-8318	FRAME GP	780	580	530	8.5675
2	CLIP		3	100	12	2	5	RP6500/RP6500E						
3	FRAME ASSY		1	780	530	580	8400	RP6500E						
11	WIRE, POSITIVE		1	35	10	5	23.6	RP6500E	501-5428	BATTERY GP-MTG	150	85	120	0.7
12A	WIRE, NEGATIVE (FROM BATTERY)		1					RP6500E						
12B	WIRE, NEGATIVE (FROM G-HEAD)		1					RP6500E						
13	BOLT		1	19	8	19	36	RP6500E						
14	BATTERY PRESSURE PLATE		1	150	85	32	189	RP6500E	512-8310	FRAME GP	780	580	530	8.5675
15	BATTERY	511-7304	1	105	54	85	412	RP6500E						
37	BOLT		2	22.5	14	14	7	RP6500E						
29	PROTECT RUBBER		1	13	10	10	1	RP6500/RP6500E	512-8310	FRAME GP	780	580	530	8.5675
30	NYLON NUT		2	8.65	8	5	3	RP6500/RP6500E						
31	ISOLATOR		2	11.5	19.5	19.5	5	RP6500/RP6500E						
33	RUBBER CUSHION		2	67	34	34	55	RP6500/RP6500E						
34	CAP NUT		2	8.7	8.7	5	0.5	RP6500/RP6500E						
35	SOUND ABSORBING COTTON		2	50	25	25	0.5	RP6500/RP6500E						

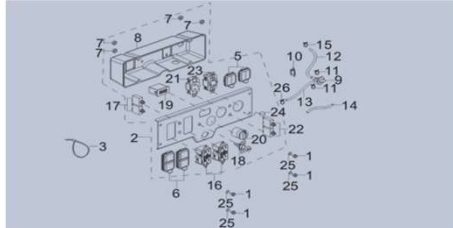
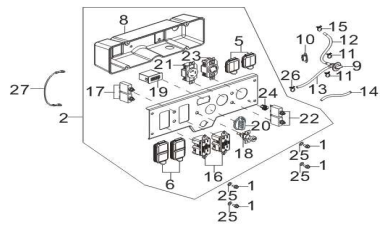


**RP6500 CO FRAME ASSY.**

REF.NO.	Description	CAT Part Number	Group QTY	L mm	W mm	H mm	Weight g	Model	CAT Group Part Number	Group Name	L mm	W mm	H mm	Weight kg
1	BOLT		3	18	13.5	13.5	6.5	RP6500/RP6500E	530-1249	FRAME GP	780	580	530	8.5675
2	CLIP		2	100	12	2	5	RP6500/RP6500E						
43	CLIP		1					RP6500						
3	FRAME ASSY		1	780	530	580	8400	RP6500						
29	PROTECT RUBBER		1	13	10	10	1	RP6500/RP6500E						
30	NYLON NUT		2	8.65	8	5	3	RP6500/RP6500E						
31	ISOLATOR		2	11.5	19.5	19.5	5	RP6500/RP6500E						
33	RUBBER CUSHION		2	67	34	34	55	RP6500/RP6500E						
34	CAP NUT		2	8.7	8.7	5	0.5	RP6500/RP6500E						
35	SOUND ABSORBING COTTON		2	50	25	25	0.5	RP6500/RP6500E						

**CO MODULE**

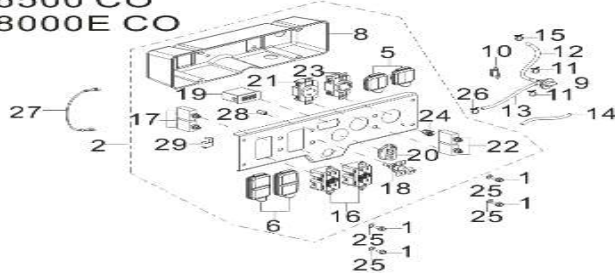
REF.NO.	Description	CAT Part Number	Group QTY	L mm	W mm	H mm	Weight g	Model	CAT Group Part Number	Group Name	L mm	W mm	H mm	Weight kg
41	CO MODULE		1					RP6500	530-1238	DETECTOR-CO	65	65	40	0.4
42	BOLT		2					RP6500						



**RP6500E CONTROL PANEL ASSY.**

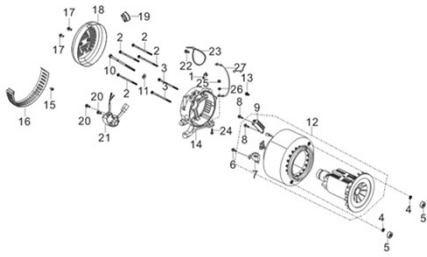
REF.NO.	Description	CAT Part Number	Group QTY	L mm	W mm	H mm	Weight g	Model	CAT Group Part Number	Group Name	L mm	W mm	H mm	Weight kg
1	BOLT		4	18	13.5	13.5	6.5	RP6500/RP6500E	512-8321	PANEL GP-CONT -B	450	150	170	1.9884
2	PANEL SUBASSEMBLY, CONTROL		1	450	140	150	1958	RP6500E						
25	WASHER		4	12	12	1	0.4	RP6500/RP6500E						
22	PROTECTOR, OVERCURRENT	511-8050	2					RP6500/RP6500E						
24	LED LIGHT	501-5081	1					RP6500/RP6500E						
9	FUEL VALVE	511-7283	1	57	33	57	8.2	RP6500/RP6500E	512-8320	VALVE GP-FUEL	57	57	60	0.0576
10	FUEL VALVE BASEMENT		1	40	1.3		2.8	RP6500/RP6500E						
11	CLAMP		2	20	8	20	1.6	RP6500/RP6500E						
12	TUBE, FUEL		1	35	9		21	RP6500/RP6500E						
13	TUBE, FUEL		1	18	9		13.4	RP6500/RP6500E						
14	JACKET, RUBBER		1	45	13		2.6	RP6500/RP6500E						
15	CLAMP		1	20	9	10	1.6	RP6500/RP6500E						
26	CLAMP		1	20	9	10	1.6	RP6500/RP6500E						
3	BAND			195	6	2	1.2	RP6500E						
5	RAIN COVER	511-8897	2	65	50	15	26.4	RP6500/RP6500E						
6	RAIN COVER, DUPLEX	511-8898	2	95	47	20	40.8	RP6500/RP6500E						
8	COVER, PANEL REAR	511-8894	1	392	115	100	224	RP500E						
16	SOCKET SUBASSEMBLY, POWER SUPPLY	511-8058	2					RP5500/RP6500E						
17	PROTECTOR, OVERCURRENT	511-8047	2					RP6500E						
18	CHOKE CABLE	511-8036	1					RP6500E						
19	TIMER	511-8060	1					RP6500E						
20	SWITCH SUBASSEMBLY	511-8054	1					RP6500E						
21	SOCKET SUBASSEMBLY, POWER SUPPLY	511-8057	1					RP6500E						
23	SOCKET SUBASSEMBLY, POWER SUPPLY	511-8056	1					RP6500E						
27	GROUND WIRE	530-1269	1					RP6500/RP6500E						
30	ON / OFF KNOB	501-5455	1	50	50	40	15	RP6500E						

6500 CO  
8000E CO



**RP6500 CO CONTROL PANEL ASSY.**

REF.NO.	Description	CAT Part Number	Group QTY	L mm	W mm	H mm	Weight g	Model	CAT Group Part Number	Group Name	L mm	W mm	H mm	Weight kg
1	BOLT		4	18	13.5	13.5	6.5	RP6500/RP6500E	530-1239	PANEL GP-CONT -B	450	150	170	1.9884
2	PANEL SUBASSEMBLY, CONTROL		1	450	140	150	1958	RP6500						
25	WASHER		4	12	12	1	0.4	RP6500/RP6500E						
20	SWITCH SUBASSEMBLY	511-8053	1					RP6500						
28	LED INDICATOR	530-1252	1					RP6500						
29	CONTROLLER	530-1261	1					RP6500						
9	FUEL VALVE	511-7283	1	57	33	57	8.2	RP6500/RP6500E	512-8320	VALVE GP-FUEL	57	57	60	0.0576
10	FUEL VALVE BASEMENT		1	40	1.3		2.8	RP6500/RP6500E						
11	CLAMP		2	20	8	20	1.6	RP6500/RP6500E						
12	TUBE, FUEL		1	35	9		21	RP6500/RP6500E						
13	TUBE, FUEL		1	18	9		13.4	RP6500/RP6500E						
14	JACKET, RUBBER		1	45	13		2.6	RP6500/RP6500E						
15	CLAMP		1	20	9	10	1.6	RP6500/RP6500E						
26	CLAMP		1	20	9	10	1.6	RP6500/RP6500E						
3	BAND			195	6	2	1.2	RP6500E						
5	RAIN COVER	511-8897	2	65	50	15	26.4	RP6500/RP6500E						
6	RAIN COVER, DUPLEX	511-8898	2	95	47	20	40.8	RP6500/RP6500E						
8	COVER, PANEL REAR	511-8894	1	392	115	100	224	RP6500E						
16	SOCKET SUBASSEMBLY, POWER SUPPLY	511-8058	2					RP6500E						
17	PROTECTOR, OVERCURRENT	511-8047	2					RP6500E						
18	CHOKE CABLE	511-8036	1					RP6500E						
19	TIMER	511-8060	1					RP6500E						
20	SWITCH SUBASSEMBLY	511-8054	1					RP6500E						
21	SOCKET SUBASSEMBLY, POWER SUPPLY	511-8057	1					RP6500E						
23	SOCKET SUBASSEMBLY, POWER SUPPLY	511-8056	1					RP6500E						
27	GROUND WIRE	530-1269	1					RP6500/RP6500E						
30	ON / OFF KNOB	501-5455	1	50	50	40	15	RP6500E						

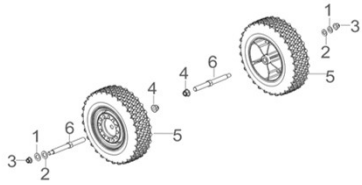


**RP6500E GENERATOR ASSY.**

REF.NO.	Description	CAT Part Number	Group QTY	L mm	W mm	H mm	Weight g	Model	CAT Group Part Number	Group Name	L mm	W mm	H mm	Weight kg
1	TERMINAL SUBASSEMBLY, GROUNDING							RP6500E						
4	WASHER							RP6500E						
5	NUT							RP6500E						
6	BOLT		1	21	12	12	4	RP6500E	501-5402	BRUSH GP	65	40	36	0.02
7	BRUSH SUBASSEMBLY, CARBON		1	40	40	36	16	RP6500E						
8	BOLT							RP6500E						
9	BLOCK, TERMINAL							RP6500E						
11	WASHER							RP6500E						
13	BOLT							RP6500E						
14	BRACKET, MOTOR							RP6500E						
15	BOLT							RP6500E						
16	SHROUD,MOTOR							RP6500E						
22	BOLT							RP6500E						
23	BAND							RP6500E						
27	GROUND WIRE							RP6500E						
17	BOLT		2	16	12	12	6.8	RP6500E						
18	COVER, MOTOR TAIL		1	190	47	50	281	RP6500E	512-8322	COVER GP	190	50	80	0.2984
19	STOPPER,MOTOR RIGHT COVER		1	30	20	14	3.8	RP6500E						
20	BOLT		2	21	11	11	4	RP6500E	512-8323	REGULATOR GP -H	240	65	60	0.257
21	REGULATOR, VOLTAGE	511-7300	1	155	65	55	256.8	RP6500E						
2	BOLT							RP6500/RP6500E						
3	BOLT							RP6500/RP6500E						
10	BOLT							RP6500/RP6500E						
12	MOTOR ASSY.							RP6500E						
28	GEN HEAD ASSY(Include items 1 - 27)	501-5094	1	400	250	250		RP6500E						

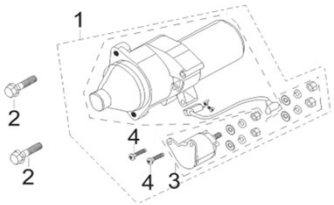
**RP6500 GENERATOR ASSY.**

REF.NO.	Description	CAT Part Number	Group QTY	L mm	W mm	H mm	Weight g	Model	CAT Group Part Number	Group Name	L mm	W mm	H mm	Weight kg
2	BOLT							RP6500/RP6500E						
3	BOLT							RP6500/RP6500E						
10	BOLT							RP6500/RP6500E						
12	MOTOR ASSY.							RP6500						
28	GEN HEAD ASSY(Include items 1 - 27)	530-1253	1	400	250	250		RP6500						



**WHEEL ASSY.**

REF.NO.	Description	CAT Part Number	Group QTY	L mm	W mm	H mm	Weight g	Model	CAT Group Part Number	Group Name	L mm	W mm	H mm	Weight kg
1	WASHER		2	20	0.5	20	4.8	RP6500/RP6500E	512-8324	WHEEL GP-TIRE&	240	240	50	3.4688
2	WASHER		2	24	24	1.2	3	RP6500/RP6500E						
3	NUT		2	10	18.5	10	16.4	RP6500/RP6500E						
4	NUT		2	10	18.5	10	16.4	RP6500/RP6500E						
6	AXLE, WHEEL		2	142	17	142	137.4	RP6500/RP6500E						
5	WHEEL	511-7307	2	240	80	240	1556.4	RP6500/RP6500E						

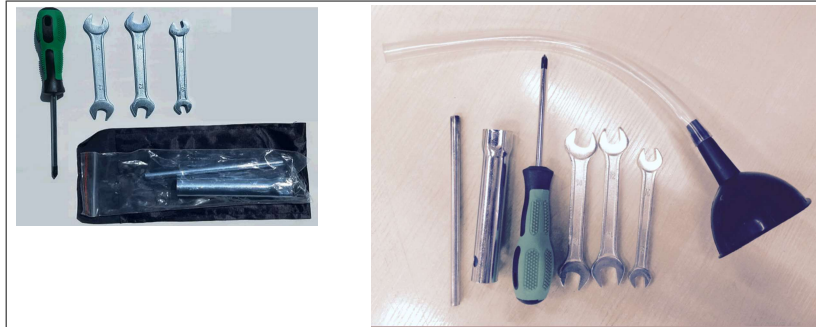


**STARTER MOTOR ASSY.**

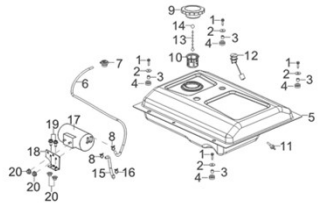
REF.NO.	Description	CAT Part Number	Group QTY	L mm	W mm	H mm	Weight g	Model	CAT Group Part Number	Group Name	L mm	W mm	H mm	Weight kg
1	MOTOR, STARTING	511-8812	1	210	140	140	1850	RP6500E	512-8325	MOTOR GP-ELECSTG	210	140	200	1.985
2	BOLT			45	20	20	18.4	RP6500E						
3	RELAY, STARTING	501-5095	1	66	58	40	135	RP6500E						
4	BOLT			21	11	11	4	RP6500E						



FULL ENGINE ASSY.														
REF.NO.	Description	CAT Part Number	Group QTY	L mm	W mm	H mm	Weight g	Model	CAT Group Part Number	Group Name	L mm	W mm	H mm	Weight kg
E00-1	ENGINE R420D-V	511-8016	1					RP6500E						
E00-1	ENGINE R420-V	530-1259	1					RP6500						

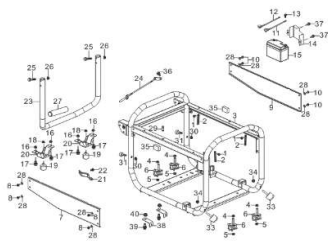


TOOL KIT.														
REF.NO.	Description	CAT Part Number	Group QTY	L mm	W mm	H mm	Weight g	Model	CAT Group Part Number	Group Name	L mm	W mm	H mm	Weight kg
1	SPARK PLUG WRENCH KIT		1	155	23	23	137	RP6500/RP6500E	501-5146	TOOL GP	230	120	40	0.424
2	SCREWDRIVER		1	210	33	33	85	RP6500/RP6500E						
3	SPANNER, DOUBLE ENDED		2	135	30	5	67	RP6500/RP6500E						
4	SPANNER, DOUBLE ENDED		1	120	13	4	48	RP6500/RP6500E						
5	TOOL KIT BAG		1	230	120	20	20	RP6500/RP6500E						
6	FUNNEL, FILLING OIL	501-5147	1	380	110	80		RP6500/RP6500E						
7	POWER CORD 25' L14-30P TO (4) 5-20R	502-3692	1					RP6500						



**CARB Version**

REF.NO.	Description	CAT Part Number	Group QTY	L mm	W mm	H mm	Weight g	Model	CAT Group Part Number	Group Name	L mm	W mm	H mm	Weight kg
6	HOSE, FUEL STEAM RUBBER		1	870	10	10	43	RP6500E	512-8326	VENT GP-FUEL	150	150	50	0.072
7	ROLLOVER VALVE		1	33	50	33	24.2	RP6500E						
8	CLAMP		2	20	9	10	1.6	RP6500E						
16	CLAMP		1	20	8	20	1.6	RP6500E						
15	HOSE, AIR CLEANER RUBBER		1	175	38	10	16	RP6500E	512-8327	DISPOSAL GP -A	185	105	150	0.5936
17	COLLECTOR, FUEL STEAM		1	185	105	90	422	RP6500E						
18	ASSEMBLY PLATE, FUEL STEAM		1	102	70	23	136	RP6500E						
19	BOLT		2	18	13.5	13.5	6.5	RP6500E						
20	NUT		4	15	6	15	6.8	RP6500E						



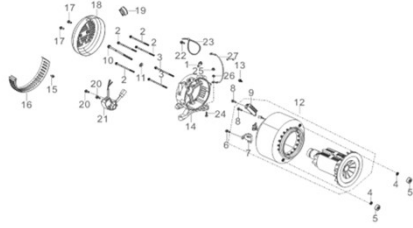
**RP6500E CARB**

1	BOLT		2	18	13.5	13.5	6.5	RP6500E	512-8329	FRAME GP	780	580	530	8.5675						
2	CLIP		2	100	12	2	5	RP6500E												
3	FRAME ASSY		1	780	530	580	8400	RP6500E												
29	PROTECT RUBBER		1	13	10	10	1	RP6500E												
30	NYLON NUT		2	8.65	8	5	3	RP6500E												
31	ISOLATOR		2	11.5	19.5	19.5	5	RP6500E												
33	RUBBER CUSHION		2	67	34	34	55	RP6500E												
34	CAP NUT		2	8.7	8.7	5	0.5	RP6500E												
35	SOUND ABSORBING COTTON		2	50	25	25	0.5	RP6500E												
11	WIRE, POSITIVE		1	35	10	5	23.6	RP6500E							501-5428	BATTERY GP-MTG	150	85	120	0.7
12A	WIRE, NEGATIVE (FROM BATTERY)		1					RP6500E												
12B	WIRE, NEGATIVE (FROM G-HEAD)		1					RP6500E												
13	BOLT		1	19	8	19	36	RP6500E												
14	BATTERY PRESSURE PLATE		1	150	85	32	189	RP6500E												
15	BATTERY	511-7304	1	105	54	85	412	RP6500E												
37	BOLT		2	22.5	14	14	7	RP6500E												

**RP6500E CSA Version**

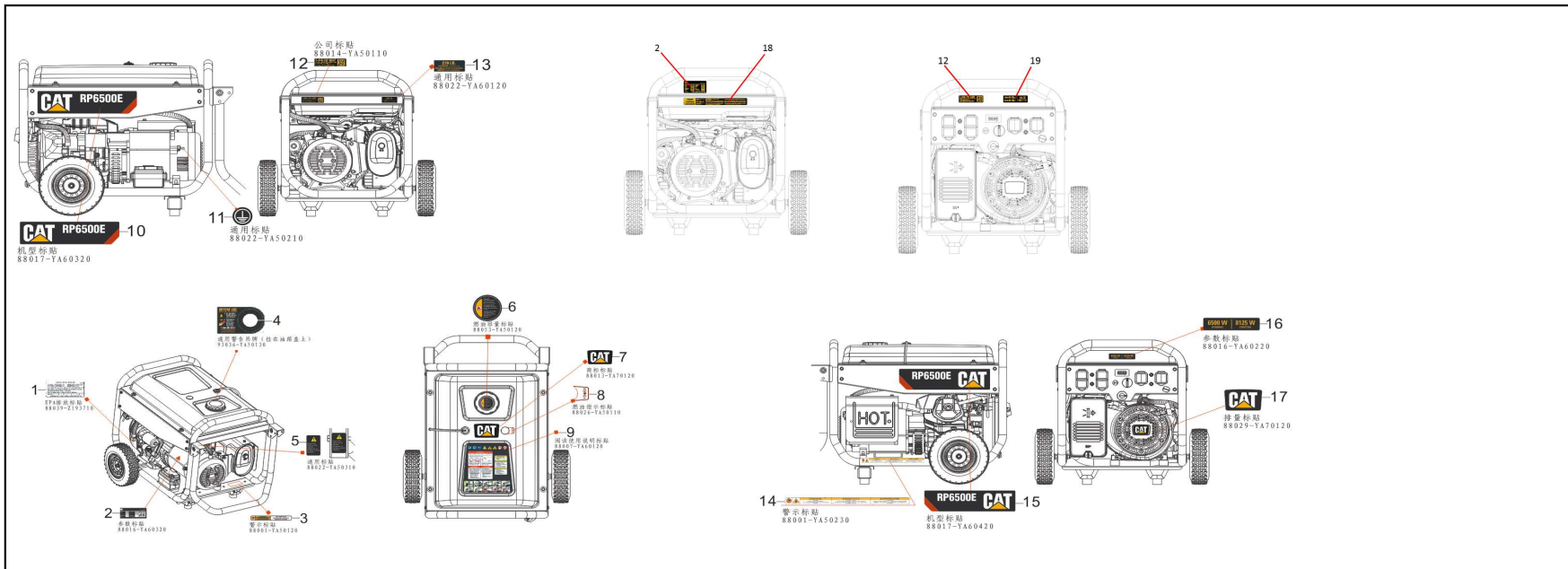
**FIG.17 PANEL SUBASSEMBLY, CONTROL (F62)**

REF.NO.	Description	CAT Part Number	Group QTY	L mm	W mm	H mm	Weight g	Model	CAT Group Part Number	Group Name	L mm	W mm	H mm	Weight kg
2	PANEL SUBASSEMBLY, CONTROL	501-5154	1	450	140	150	1958	RP6500E						
8	COVER, PANEL REAR	511-8894	1	392	115	100	224	RP6500E						
19	TIMER	511-8060	1	56	50	30	75	RP6500E						
20	SWITCH SUBASSEMBLY	511-8054	1	50	45	45	100	RP6500E						
20a	ON/OFF KNOB	501-5455	1	50	50	40	15	RP6500E						
22	BREAKER, DOUBLE-POLE	501-5155	1					RP6500E						
27	GROUND WIRE	530-1269	1					RP6500/RP6500E CSA/EPA/CARB						



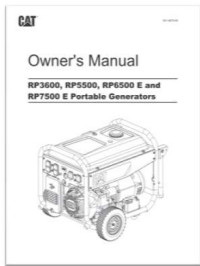
**FIG.18 ROTOR/STATOR (F63)**

REF.NO.	Description	CAT Part Number	Group QTY	L mm	W mm	H mm	Weight g	Model	CAT Group Part Number	Group Name	L mm	W mm	H mm	Weight kg
20	BOLT		2	21	11	11	4	RP6500E CSA						
21	REGULATOR, VOLTAGE		1	155	65	55	256.8	RP6500E CSA	530-1263	REGULATOR GP -H	240	65	60	0.257
28	GEN HEAD ASSY(Inclue F17-1 to 27)	501-5440	1	400	250	250	31280	RP6500E						

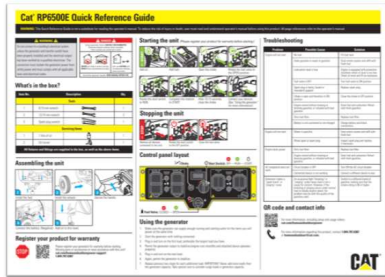


RP6500E FIG.21 DECALS/MANUAL/QSG(E00)

REF.NO.	Description	CAT Part Number	Group QTY	L mm	W mm	H mm	Weight g	Model	CAT Group Part Number	Group Name	L mm	W mm	H mm	Weight kg
2	LABEL_SPEC EPA	501-5409	1	114	51			RP6500E						
2	LABEL_SPEC CARB		1	114	51			RP6500E						
3	LABEL_HOT SURFACE		1	135	15									
5	LABEL_HANDLE WARNING		1	45	28									
6	LABEL_FUEL SPEC		1	65	65									
9	LABEL_GENERAL WARNING		1	206	223			RP6500E	501-5121	FILM GP	255	206	10	0.063
11	LABEL_GROUND		1	11	11									
14	LABEL_HOT EXHAUST		1	255	15									
18	LABEL_COMBINED WARNING	501-5416	1	238	25			RP6500E						
4	HANGTAG	501-5417	1	202	125			RP6500E						
7	LABEL_TRADEMARK		1	105	64									
10	LABEL_MODEL LEFT		1	363	90									
15	LABEL_MODEL RIGHT		1	363	90			RP6500E	501-5123	FILM GP	363	90	6	0.057
17	LABEL_RECOIL LOGO		1	62	38									
8	LABEL_FUEL GAUGE	501-5124	1	28	30			RP6500E						
12	LABEL_QR CODE		1	87.5	25			RP6500/RP6500E	501-5429	FILM GP	105	25	4	0.004
19	LABEL_COMBINED WEIGHT & RATING		1	105	25									
20	HANGTAG							RP6500/RP6500E						



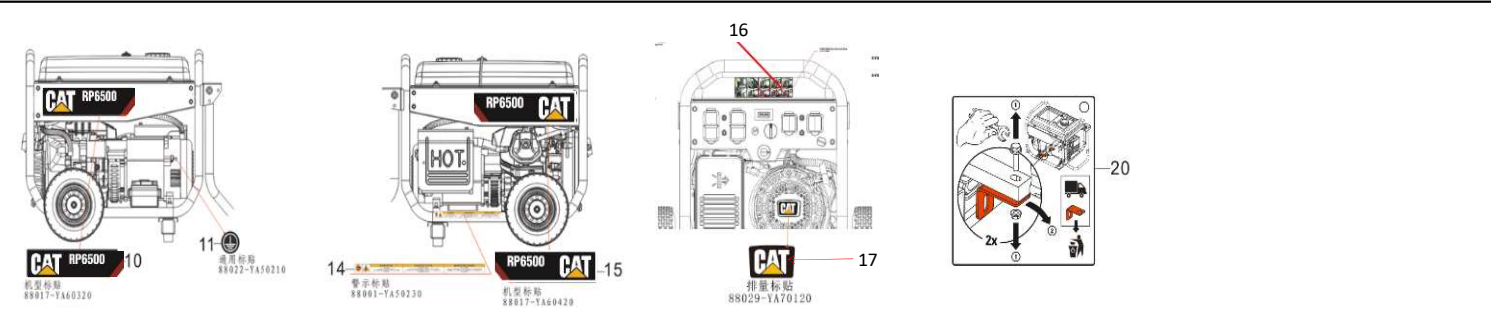
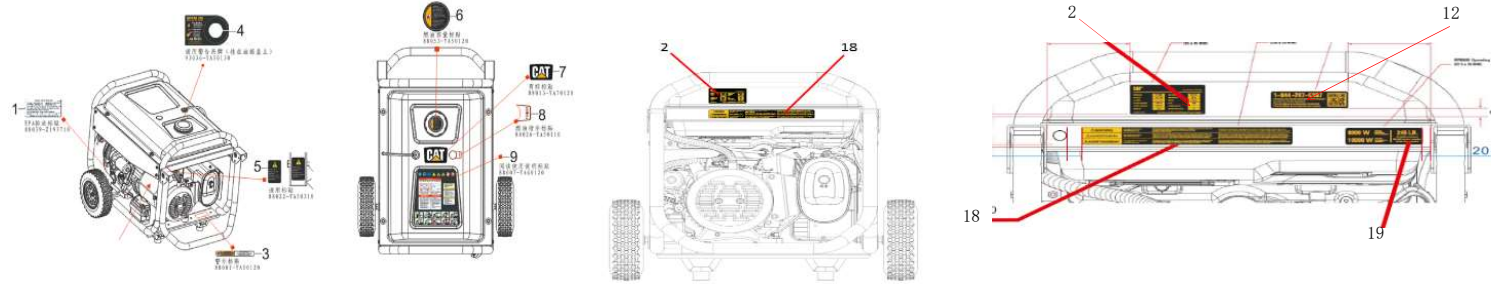
18



19

REF.NO.	Description	CAT Part Number	Group QTY	L mm	W mm	H mm	Weight g	Model	CAT Group Part Number	Group Name	L mm	W mm	H mm	Weight kg
18	MANUAL	501-6075	1	212	275			RP3600/RP5500/RP6500E/RP7500E						
19	QUICK START GUIDE EPA/CARB	501-5132	1	207	142.5			RP6500E						
19	QUICK START GUIDE CSA	501-5126	1	207	142.5			RP6500E						

RP6500 FIG.21 DECALS/MANUAL/QSG(E00)



REF.NO.	Description	CAT Part Number	Group QTY	L mm	W mm	H mm	Weight g	Model	CAT Group Part Number	Group Name	L mm	W mm	H mm	Weight kg
2	LABEL, SPEC EPA	530-1244	1	114	51			RP6500						
3	LABEL, HOT SURFACE		1	135	15									
5	LABEL, HANDLE WARNING		1	45	28									
6	LABEL, FUEL SPEC		1	65	65									
9	LABEL, GENERAL WARNING		1	206	223			RP6500	530-1243	FILM GP	255	206	10	0.063
11	LABEL, GROUND		1	11	11									
14	LABEL, HOT EXHAUST		1	255	15									
7	LABEL, TRADEMARK		1	105	64									
10	LABEL, MODEL LEFT		1	363	90			RP6500	530-1241	FILM GP	363	90	6	0.057
15	LABEL, MODEL RIGHT		1	363	90									
17	LABEL, RECOIL LOGO		1	62	38									
REF.NO.	Description	CAT Part Number	Group QTY	L mm	W mm	H mm	Weight g	Model	CAT Group Part Number	Group Name	L mm	W mm	H mm	Weight kg
20	MANUAL	501-6075	1	212	275			RP6500/RP6500E						
21	QUICK START GUIDE EPA/CARB		1	207	142.5			RP6500						
22	CARTON							RP6500						

Last Update March 8, 2023