

EPA Version RP7500E PARTS LIST

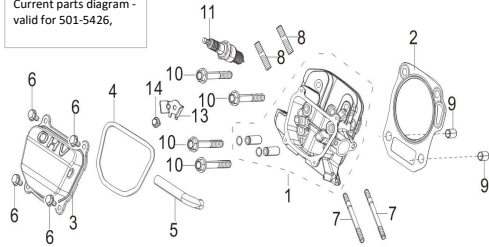
Important Information

The service parts list information provided within the Parts Diagram document is all inclusive of the service parts which are presently available for the defined model.

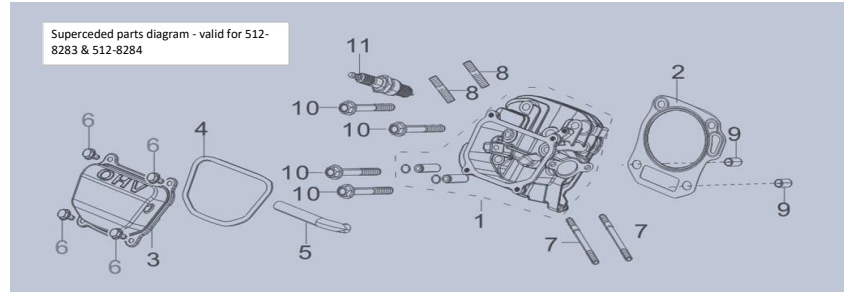
Not all individual parts are serviceable at the piece part level.

If an itemized part does not have a defined corresponding service part listed, the defined group level service part must be ordered.

Current parts diagram - valid for 501-5426,



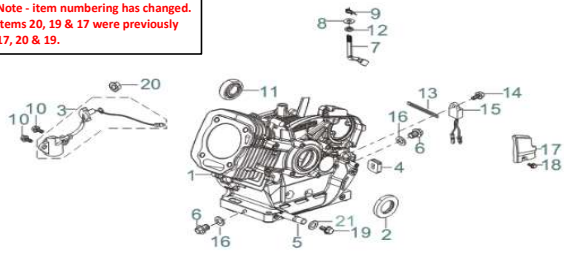
Superceded parts diagram - valid for 512-8283 & 512-8284



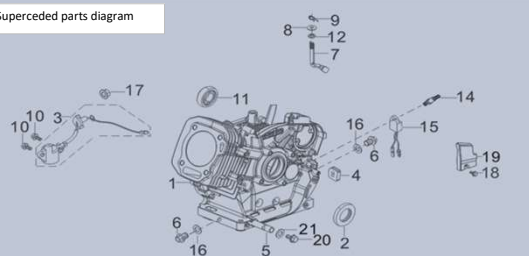
CYLINDER ASSY.

REF.NO.	Description	CAT Part Number	Group QTY	L mm	W mm	H mm	Weight g	Model	CAT Group Part Number	Group Name	L mm	W mm	H mm	Weight kg
3	COVER SUBASSEMBLY, CYLINDER HEAD		1	140	41	115	259.2	RP7500E	501-5426	COVER GP-CYL HD	140	115	60	0.3518
4	GASKET, CYLINDER HEAD COVER	501-5425	1	135	112	3	4.6	RP7500E						
6	BOLT		4	19	16	16	208	RP7500E						
5	TUBE, BREATHER	511-8860	1	125	17	15	16.6	RP7500E						
1	HEAD SUBASSEMBLY, CYLINDER		1	200	200	100	1720	RP7500E	530-1267	HEAD GP-CYL BSC	200	200	140	2.0523
2	GASKET, CYLINDER HEAD	511-7251	1	140	130	2	16.5	RP7500E						
7	STUD		2	34	8	8	10	RP7500E						
8	STUD		2	112	9	9	30.4	RP7500E						
9	PIN		2	20	13	13	4.5	RP7500E						
10	BOLT, CYLINDER HEAD		4	190	20	20	51.5	RP7500E						
11	PLUG, SPARK	511-7297	1	185	20	20	60	RP7500E						
42	GASKET, CYLINDER HEAD COVER		1	140	41	115	259.2	RP7500E						
13	RETAINER		1					RP7500E	530-1256	RETAINER GP	40	40	40	0.200
14	BOLT		1					RP7500E						

Note - item numbering has changed.
Items 20, 19 & 17 were previously
17, 20 & 19.

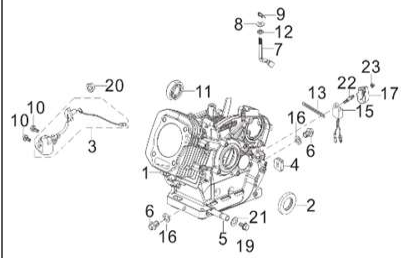


Superseded parts diagram



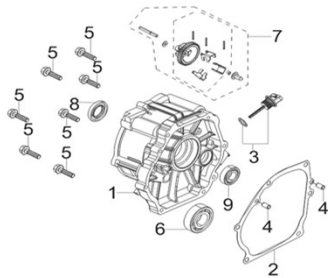
RP7500E CRANKCASE ASSY.

REF.NO.	Description	CAT Part Number	Group QTY	L mm	W mm	H mm	Weight g	Model	CAT Group Part Number	Group Name	L mm	W mm	H mm	Weight kg
3	SENSOR, ENGINE OIL		1	110	50	50	45	RP7500E	512-8285	SENSOR GP-LEVEL	110	50	70	0.0638
10	BOLT		2	15	15	15	5.5	RP7500E						
20	NUT		1	127	90	58	41.6	RP7500E						
7	ARM, GOVERNOR		1	115	50	50	37.8	RP7500E	512-8286	LEVER GP-CAL	115	50	60	0.0408
8	WASHER, FLAT		1	12	12	1	1.6	RP7500E						
9	COTTER		1	20	8	2	0.6	RP7500E						
12	SEAL, OIL		1	16	16	5	0.8	RP7500E						
2	SEAL, OIL		1	55	55	8	15	RP7500E	501-5442	BEARING GP -B	55	55	25	0.055
11	BEARING, DEEP GROOVE BALL		1	40	40	13	40	RP7500E						
1	CRANKCASE SUBASSEMBLY		1	370	280	190	5000	RP7500E	512-8288	CRANKCASE GP	370	280	220	5.0754
4	PLUG, RUBBER		1	25	20	8	3.2	RP7500E						
5	DRAIN PIPE		1	50	14	14	30	RP7500E						
6	BOLT, DRAIN PLUG		3	23	18	7	3	RP7500E						
13	CLIP		1	100	12	2	5	RP7500E						
16	WASHER, FLAT		2	21	21	2	1	RP7500E						
19	Drain Bolt		1	19	19	9	8	RP7500E						
21	WASHER, FLAT	501-5404	1	16	16	1.5	0.4	RP7500E						
17	WIRE PROTECT COVER		1	23	18	7	3	RP7500E						
15	PROTECTOR, OIL		1	50	30	20	22	RP7500E	512-8289	COVER GP	127	90	90	0.1208
18	BOLT		1	31	14	14	8.8	RP7500E						
14	BOLT		1	19	16	16	208	RP7500E						



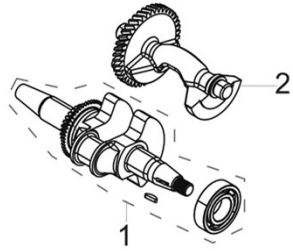
RP7500 CRANKCASE ASSY.

REF.NO.	Description	CAT Part Number	Group QTY	L mm	W mm	H mm	Weight g	Model	CAT Group Part Number	Group Name	L mm	W mm	H mm	Weight kg
1	CRANKCASE SUBASSEMBLY.		1	370	280	190	5000	RP7500E	530-1246	CRANKCASE GP	370	280	220	5.0754
4	PLUG, RUBBER		1	25	20	8	3.2	RP7500E						
5	DRAIN PIPE		1	50	14	14	30	RP7500E						
6	BOLT, DRAIN PLUG		3	23	18	7	3	RP7500E						
13	CLIP		1	100	12	2	5	RP7500E						
16	WASHER, FLAT		2	21	21	2	1	RP7500E						
19	Drain Bolt		1	19	19	9	8	RP7500E						
21	WASHER, FLAT	501-5404	1	16	16	1.5	0.4	RP7500E						
15	PROTECTOR, OIL		1					RP7500E	530-1247	SENSOR GP	127	90	90	0.1208



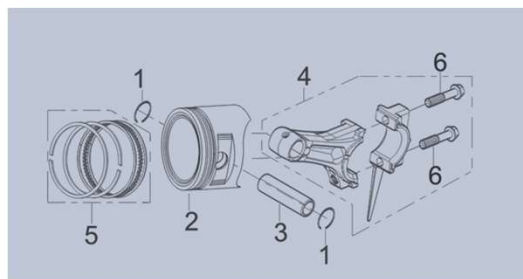
CRANKCASE COVER

REF.NO.	Description	CAT Part Number	Group QTY	L mm	W mm	H mm	Weight g	Model	CAT Group Part Number	Group Name	L mm	W mm	H mm	Weight kg
1	COVER, CRANKCASE		1	270	240	114	1580	RP7500E	512-8290	COVER GP-REAR	270	240	130	1.7275
2	GASKET, CRANKCASE	511-7243	1	270	215	1	4.5	RP7500E						
4	PIN		2	11	7	7	1.5	RP7500E						
5	BOLT		7	50	18	18	20	RP7500E						
6	BEARING, DEEP GROOVE BALL		1	80	80	20	280	RP7500E	501-5443	BEARING GP -B	80	80	50	0.335
8	SEAL, OIL		1	55	55	8	15	RP7500E						
9	BEARING, DEEP GROOVE BALL		1	40	40	13	40	RP7500E						
3	DIPSTICK SUBASSEMBLY, OIL	501-5087	1	86	37	31	20	RP7500E						
7	GEAR ASSY, GOVERNOR	511-8847	1	65	60	60	62.8	RP7500E						



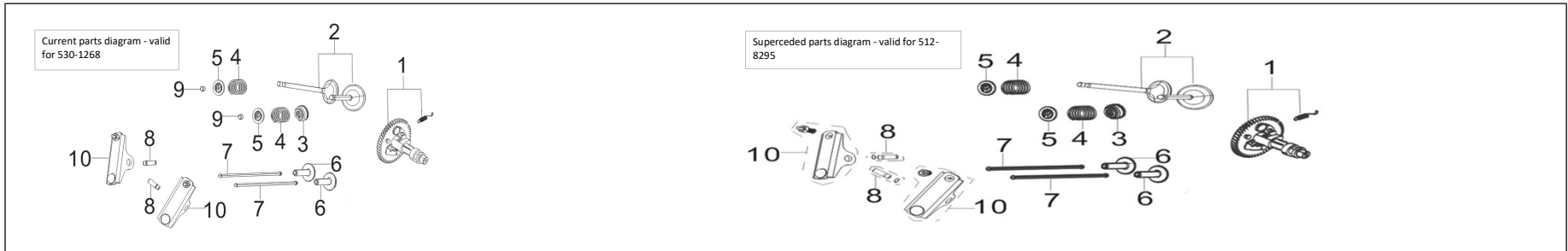
CRANKSHAFT ASSY.

REF.NO.	Description	CAT Part Number	Group QTY	L mm	W mm	H mm	Weight g	Model	CAT Group Part Number	Group Name	L mm	W mm	H mm	Weight kg
1	CRANKSHAFT ASSY.		1	300	110	115	3860	RP7500E	512-8292	CRANKSHAFT GP	300	115	200	4.62
2	SHAFT ASSY, BALANCING		1	140	90	90	760	RP7500E						



PISTON/CONNECTING ROD

REF.NO.	Description	CAT Part Number	Group QTY	L mm	W mm	H mm	Weight g	Model	CAT Group Part Number	Group Name	L mm	W mm	H mm	Weight kg
5	PISTON RINGS SET	511-7264	1	95	95	3	20	RP7500E	512-8293	PISTON GP	100	100	100	0.3518
1	CLIP, PISTON PIN		2	25	25	1	0.4	RP7500E						
2	PISTON		1	65	25	25	39	RP7500E						
3	PIN, PISTON		1	100	100	70	312	RP7500E	512-8294	ROD GP-CONN	170	160	45	0.293
4	ROD, CONNECTING		1	170	160	30	260	RP7500E						
6	BOLT, CONNECTING ROD		2	44	15	15	16.5	RP7500E						



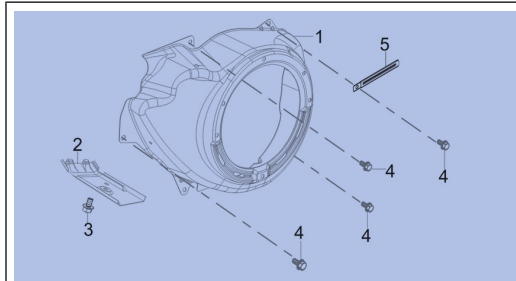
CAMSHAFT ASSY.

REF.NO.	Description	CAT Part Number	Group QTY	L mm	W mm	H mm	Weight g	Model	CAT Group Part Number	Group Name	L mm	W mm	H mm	Weight kg
1	CAMSHAFT ASSY.		1	125	120	120	835	RP7500E	530-1268	CAMSHAFT GP	192	120	180	1.2628
2	VALVES SET		1	95	35	35	75	RP7500E						
3	GUIDE, SEAL		1	10	10	8	0.8	RP7500E						
4	SPRING, VALVE		2	40	25	25	14	RP7500E						
5	SEAT, VALVE SPRING		2	22	25	5	5	RP7500E						
6	TAPPET, VALVE		2	50	30	30	29	RP7500E						
7	LIFTER SUBASSEMBLY, VALVE		2	192	5	5	60.2	RP7500E						
8	ROCKER SHAFT		2	38	10	10	12	RP7500E						
9	ROTATOR, VALVE		2	10	10	10	6	RP7500E						
10	ROCKER ARM, VALVE		2	165	25	22	109.4	RP7500E						



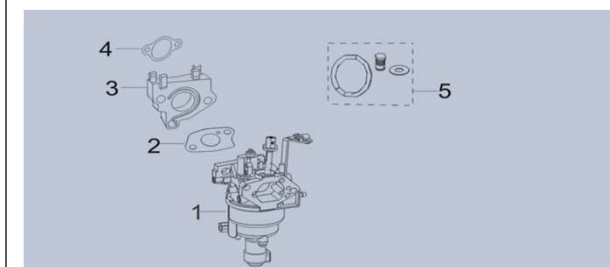
RECOIL ASSY.

REF.NO.	Description	CAT Part Number	Group QTY	L mm	W mm	H mm	Weight g	Model	CAT Group Part Number	Group Name	L mm	W mm	H mm	Weight kg
1	STARTER ASSY, RECOIL		1	258	258	48	709.8	RP7500E	512-8296	PULLEY GP-CSHAFT	258	258	60	0.7536
2	BOLT		3	15	15	11	14.6	RP7500E						



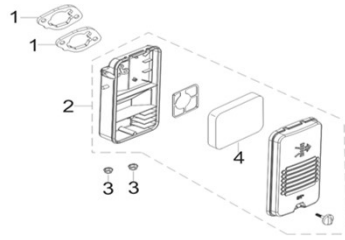
SHROUD ASSY.

REF.NO.	Description	CAT Part Number	Group QTY	L mm	W mm	H mm	Weight g	Model	CAT Group Part Number	Group Name	L mm	W mm	H mm	Weight kg
1	SHROUD	[REDACTED]	1	380	142	264	842.5	RP7500E	512-8297	SHROUD GP-AIR	380	264	210	1.1001
2	SHROUD, CYLINDER BODY		1	170	55	75	120.6	RP7500E						
3	BOLT		1	19	16	16	208	RP7500E						
4	BOLT		5	19	16	16	208	RP7500E						
5	CLIP		1	100	12	2	5	RP7500E						



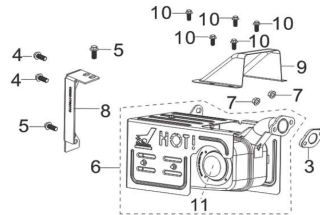
CARBURETOR ASSY.

REF.NO.	Description	CAT Part Number	Group QTY	L mm	W mm	H mm	Weight g	Model	CAT Group Part Number	Group Name	L mm	W mm	H mm	Weight kg
1	CARBURETOR ASSY.	511-7277	1	190	90	60	437.8	RP7500E	512-8298	CARBURETOR GP -B	190	90	70	0.4868
2	GASKET, CARBURETOR	511-7269	1	65	43	2	1	RP7500E						
3	PLATE, CARBURETOR INSULATOR	511-7271	1	70	16	2	47.4	RP7500E						
4	GASKET, INLET	511-8857	1	68	38	2	0.6	RP7500E						
5	High Altitude Kit(3000-6000ft)	501-5088	1					RP7500E						
	High Altitude Kit(6000-8000ft)	501-5089	1					RP7500E						



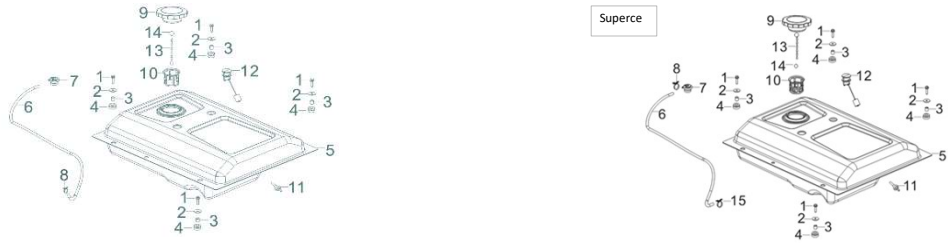
AIR CLEANER ASSY.

REF.NO.	Description	CAT Part Number	Group QTY	L mm	W mm	H mm	Weight g	Model	CAT Group Part Number	Group Name	L mm	W mm	H mm	Weight kg
1	GASKET, AIR CLEANER	511-7286	2	70	45	2	1.2	RP7500E	512-8299	CLEANER GP-AIR-B	260	75	40	0.4764
2	CLEANER, AIR		1	260	15	75	448.2	RP7500E						
3	NUT		2	15	6	15	6.8	RP7500E						
4	FILTER, AIR CLEANER	511-7290	1	40	17	22	12.2	RP7500E						



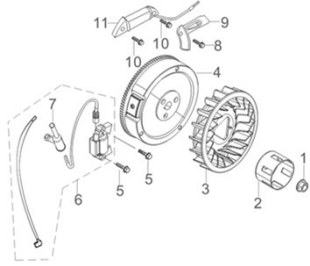
RP7500E MUFFLER ASSY.

REF.NO.	Description	CAT Part Number	Group QTY	L mm	W mm	H mm	Weight g	Model	CAT Group Part Number	Group Name	L mm	W mm	H mm	Weight kg
3	GASKET, EXHAUST OUTLET	511-7291	1	70	46	1	8.4	RP7500E	512-8300	MUFFLER GP	280	240	280	3.7497
4	BOLT		2	24	18	18	23	RP7500E						
5	BOLT		2	24	18	18	23	RP7500E						
8	BRACKET, MUFFLER		1	165	49	5	152.6	RP7500E						
6	MUFFLER ASSEMBLY		1	280	200	240	3352	RP7500E						
7	NUT		2	13	13	7	4.6	RP7500E						
9	Muffler Air Guide Cover		1	150	130	70	216	RP7500E						
10	BOLT		5	18	13.5	13.5	6.5	RP7500E						
11	SPARK ARRESTOR	501-5080	1	85	15	93	30	RP7500E						



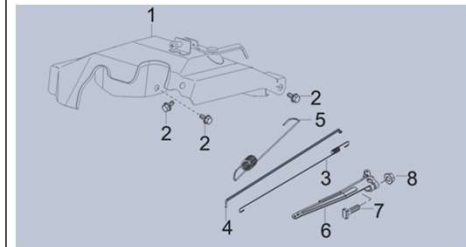
FUEL TANK ASSY.

REF.NO.	Description	CAT Part Number	Group QTY	L mm	W mm	H mm	Weight g	Model	CAT Group Part Number	Group Name	L mm	W mm	H mm	Weight kg
6	HOSE, FUEL STEAM RUBBER		1	870	10	10	43	RP7500E	512-8302	VENT GP-FUEL	250	250	80	0.0704
7	ROLLOVER VALVE		1	33	50	33	24.2	RP7500E						
8	CLAMP		1	20	8	20	1.6	RP7500E						
9	FUEL CAP		1	96	40	96	189.6	RP7500E	512-8303	CAP GP-FUEL	165	165	60	0.1952
13	CHAIN, FUEL CAP		1	165	10	165	5.4	RP7500E						
14	CLIP, FUEL CAP CHAIN		1	11	11	2	0.2	RP7500E						
1	BOLT		4	31	14	14	8.8	RP7500E	501-5423	TANK GP-FUEL (B)	640	510	200	6.1764
2	WASHER		4	25	2	25	27.4	RP7500E						
3	BUSH		4	14	12	14	19	RP7500E						
4	SLEEVE, FUEL TANK RUBBER		4	14	26	14	21	RP7500E						
5	TANK, FUEL	511-7281	1	640	510	180	5748.2	RP7500E						
12	LEVELER GAUGE, FUEL	501-5422	1	145	35	35	17.8	RP7500E						
10	STRAINER, FUEL	511-8851	1	51	59	51	7.2	RP7500E						
11	FUEL OUTLET NOZZLE	511-8853	1	54	21	21	4.2	RP7500E						



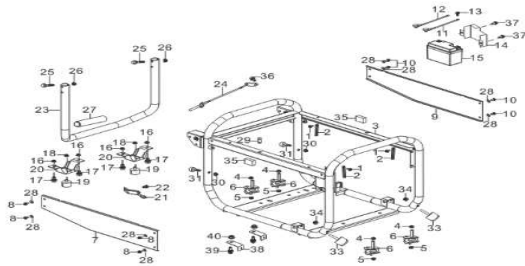
RP7500E FLYWHEEL ASSY.

REF.NO.	Description	CAT Part Number	Group QTY	L mm	W mm	H mm	Weight g	Model	CAT Group Part Number	Group Name	L mm	W mm	H mm	Weight kg
5	BOLT		2	35	15	15	8.6	RP7500E	512-8305	COIL GP-IGNITION	395	50	60	0.2898
6	COIL, IGNITION		1	395	50	30	241	RP7500E						
7	CAP, SPARK PLUG		1	85	32	22	32	RP7500E						
1	NUT, FLYWHEEL		1	30	30	25	35.2	RP7500E	512-8306	FLYWHEEL GP	210	210	170	6.4492
2	CUP, STARTER		1	75	75	65	191.2	RP7500E						
3	IMPELLER		1	210	210	45	221.4	RP7500E						
4	FLYWHEEL SUBASSEMBLY		1	210	210	58	6000	RP7500E						
8	BOLT		1	19	16	16	208	RP7500E	512-8307	CHARGER GP-BTRY	110	50	40	0.2178
9	CLAMP, CHARGE COIL		1	70	50	5	13.8	RP7500E						
10	BOLT		2	40	16	16	8.5	RP7500E						
11	COIL SUBASSEMBLY, CHARGE		1	110	28	24	165	RP7500E						



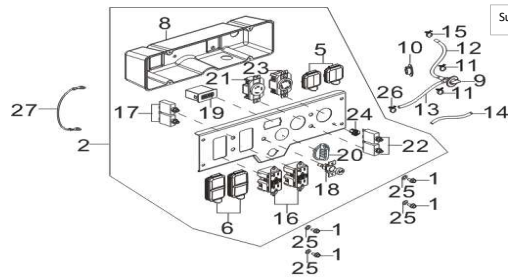
GOVERNOR CONTROL ASSY.

REF.NO.	Description	CAT Part Number	Group QTY	L mm	W mm	H mm	Weight g	Model	CAT Group Part Number	Group Name	L mm	W mm	H mm	Weight kg
1	CONTROL ASSY, THROTTLE		1	280	220	50	356	RP7500E	512-8309	GOVERNOR GP -E	280	220	100	0.514
2	BOLT		3	19	16	16	208	RP7500E						
3	SPRING, THROTTLE VALVE RETURNING		1	221	6	15	0.8	RP7500E						
4	ROD, GOVERNEOR		1	238	10	10	7.6	RP7500E						
5	SPRING, GOVERNOR	511-7275	1	137	12	12	23.6	RP7500E						
6	SUPPORT SUBASSEMBLY, GOVERNOR		1	180	42	15	50.4	RP7500E						
7	BOLT, GOVERNOR SUPPORT		1	25	13.5	25	2.8	RP7500E						
8	NUT		1	15	6	15	6.8	RP7500E						

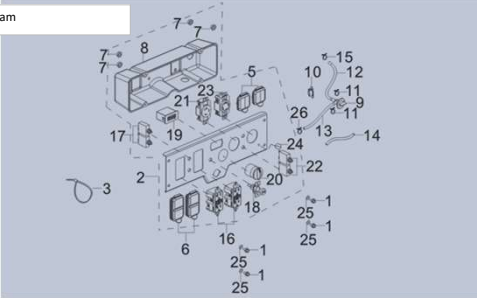


RP7500E FRAME ASSY.

REF.NO.	Description	CAT Part Number	Group QTY	L mm	W mm	H mm	Weight g	Model	CAT Group Part Number	Group Name	L mm	W mm	H mm	Weight kg
1	BOLT		3	18	13.5	13.5	6.5	RP7500E						
2	CLIP		3	100	12	2	5	RP7500E						
3	FRAME ASSY		1	780	530	580	8400	RP7500E						
29	PROTECT RUBBER		1	13	10	10	1	RP7500E						
30	NYLON NUT		2	8.65	8	5	3	RP7500E	512-8310	FRAME GP	780	580	530	8.5675
31	ISOLATOR		2	11.5	19.5	19.5	5	RP7500E						
33	RUBBER CUSHION		2	67	34	34	55	RP7500E						
34	CAP NUT		2	8.7	8.7	5	0.5	RP7500E						
35	SOUND ABSORBING COTTON		2	50	25	25	0.5	RP7500E						
4	NUT		4	21	12	21	47	RP7500E						
5	NUT		4	8	17	8	26.6	RP7500E	512-8311	ISOLATOR GP	86	80	60	0.6384
6	ISOLATOR, FRAME		4	86	80	45	86	RP7500E						
7	LEFT SIDE PANEL		1	650	120	10	996.6	RP7500E						
8	BOLT		4	18	13.5	13.5	6.5	RP7500E	512-8312	COVER GP-LH	650	120	30	1.027
28	WASHER		8	12	12	1	0.4	RP7500E						
9	RIGHT SIDE PANEL		1	650	120	10	996.6	RP7500E						
10	BOLT		4	18	13.5	13.5	6.5	RP7500E	512-8313	COVER GP-RH	650	120	30	1.0242
28	WASHER		1	12	12	1	0.4	RP7500E						
11	WIRE, POSITIVE		1	35	10	5	23.6	RP7500E						
12A	WIRE, NEGATIVE (FROM BATTERY)		1					RP7500E						
12B	WIRE, NEGATIVE (FROM G-HEAD)		1					RP7500E						
13	BOLT		1	19	8	19	36	RP7500E	501-5428	BATTERY GP-MTG&	150	85	120	0.7
14	BATTERY PRESSURE PLATE	501-5090	1	150	85	32	189	RP7500E						
15	BATTERY	511-7304	1	105	54	85	412	RP7500E						
37	BOLT		2	22.5	14	14	7	RP7500E						
16	NUT		4	8	17	8	27.2	RP7500E						
17	BOLT		4	25	17	25	47	RP7500E						
18	NUT		2	8	17	8	13.6	RP7500E	512-8315	SUPPORT GP-FRAME	154	55	100	1.7532
19	FOOT, FRAME SUPPORT BRACKET		2	37	37	37	109.2	RP7500E						
20	SUPPORT BRACKET, FRAME		2	154	55	53	605.4	RP7500E						
21	SUPPORT BRACKET, ATR CLEANER		1	140	21	30	6.6	RP7500E						
22	BOLT		1	19	16	16	208	RP7500E	512-8316	SUPPORT GP-ACL	140	30	40	0.0286
23	HANDLE		1	440	515	130	1600	RP7500E						
24	LOCK PIN		1	25	2	25	37.4	RP7500E						
25	BOLT		2	60	17	17	56.8	RP7500E	512-8317	BRACKET GP -D	515	440	200	1.8236
26	NUT		2	8	17	8	27.2	RP7500E						
27	FOAM, HANDLE		1	208	40	40	21	RP7500E						
36	BOLT		1	18	13.5	13.5	6.5	RP7500E						
38	FOOT, FRAME SUPPORT BRACKET		2					RP7500E						
39	BOLT		2					RP7500E						
40	NUT		2					RP7500E						

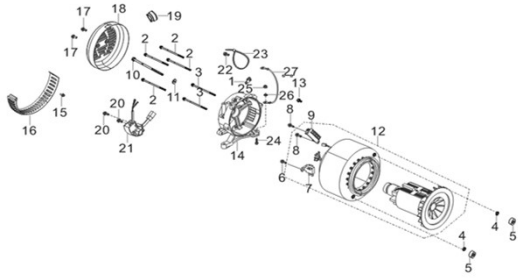


Superceded parts diagram



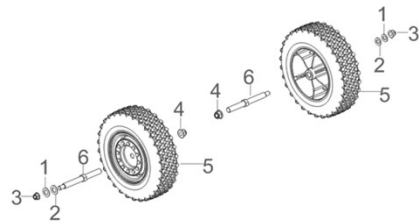
RP7500E CONTROL PANEL ASSY.

REF.NO.	Description	CAT Part Number	Group QTY	L mm	W mm	H mm	Weight g	Model	CAT Group Part Number	Group Name	L mm	W mm	H mm	Weight kg
1	BOLT		4	18	13.5	13.5	6.5	RP7500E						
2	PANEL SUBASSEMBLY, CONTROL		1	450	140	150	1958	RP7500E	512-8319	PANEL GP-CONT -B	450	150	160	1.9884
25	WASHER		4					RP7500E						
9	FUEL VALVE	511-7283	1	57	33	57	8.2	RP7500E						
10	FUEL VALVE BASEMENT		1	40	1.3		2.8	RP7500E						
11	CLAMP		2	20	8	20	1.6	RP7500E						
12	TUBE, FUEL		1	35	9		21	RP7500E	512-8320	VALVE GP-FUEL	57	57	60	0.0576
13	TUBE, FUEL		1	18	9		13.4	RP7500E						
14	JACKET, RUBBER		1	45	13		2.6	RP7500E						
15	CLAMP		1	20	9	10	1.6	RP7500E						
26	CLAMP		1	20	9	10	1.6	RP7500E						
5	RAIN COVER	511-8897	2	65	50	15	26.4	RP7500E						
6	RAIN COVER, DUPLEX	511-8898	2	95	47	20	40.8	RP7500E						
8	COVER, PANEL REAR	511-8894	1	392	115	100	224	RP7500E						
16	SOCKET SUBASSEMBLY, POWER SUPPLY	511-8058	2					RP7500E						
17	PROTECTOR, OVERCURRENT	511-8047	2					RP7500E						
18	CHOKE CABLE	511-8036	1					RP7500E						
19	TIMER	511-8060	1					RP7500E						
20	SWITCH SUBASSEMBLY	511-8054	1					RP7500E						
21	SOCKET SUBASSEMBLY, POWER SUPPLY	511-8057	1					RP7500E						
22	PROTECTOR, OVERCURRENT	501-5091	2					RP7500E						
23	SOCKET SUBASSEMBLY, POWER SUPPLY	511-8056	1					RP7500E						
24	LED LIGHT	501-5092	1					RP7500E						
27	GROUND WIRE	530-1269	1					RP7500E CSA/EPA/CARB						
30	ON / OFF KNOB	501-5455	1	50	50	40	15	RP7500E						



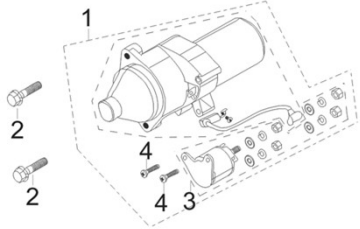
RP7500E GENERATOR ASSY.

REF.NO.	Description	CAT Part Number	Group QTY	L mm	W mm	H mm	Weight g	Model	CAT Group Part Number	Group Name	L mm	W mm	H mm	Weight kg
1	TERMINAL SUBASSEMBLY, GROUNDING							RP7500E						
2	BOLT							RP7500E						
3	BOLT							RP7500E						
4	WASHER							RP7500E						
5	NUT							RP7500E						
6	BOLT		1	21	12	12	4	RP7500E						
7	BRUSH SUBASSEMBLY, CARBON		1	40	40	36	16	RP7500E	501-5402	BRUSH GP	65	40	36	0.02
8	BOLT							RP7500E						
9	BLOCK, TERMINAL							RP7500E						
10	BOLT							RP7500E						
11	WASHER							RP7500E						
12	MOTOR ASSY.							RP7500E						
13	BOLT							RP7500E						
14	BRACKET, MOTOR							RP7500E						
15	BOLT							RP7500E						
16	SHROUD,MOTOR							RP7500E						
22	BOLT							RP7500E						
23	BAND							RP7500E						
24	BOLT							RP7500E						
25	NUT							RP7500E						
26	LOCK WASHER							RP7500E						
27	GROUND WIRE							RP7500E						
17	BOLT		2	16	12	12	6.8	RP7500E						
18	COVER, MOTOR TAIL		1	190	47	50	281	RP7500E	512-8322	COVER GP	190	50	80	0.2984
19	STOPPER,MOTOR RIGHT COVER		1	30	20	14	3.8	RP7500E						
20	BOLT		2	21	11	11	4	RP7500E						
21	REGULATOR, VOLTAGE	511-7300	1	155	65	55	256.8	RP7500E	512-8323	REGULATOR GP -H	240	65	60	0.257
28	GEN HEAD ASSY(Include items 1 - 27)	501-5093	1	400	250	250		RP7500E						



WHEEL ASSY.

REF.NO.	Description	CAT Part Number	Group QTY	L mm	W mm	H mm	Weight g	Model	CAT Group Part Number	Group Name	L mm	W mm	H mm	Weight kg
1	WASHER		2	20	0.5	20	4.8	RP7500E	512-8324	WHEEL GP-TIRE&	240	240	50	3.4688
2	WASHER		2	24	24	1.2	3	RP7500E						
3	NUT		2	10	18.5	10	16.4	RP7500E						
4	NUT		2	10	18.5	10	16.4	RP7500E						
6	AXLE, WHEEL		2	142	17	142	137.4	RP7500E						
5	WHEEL	511-7307	2	240	80	240	1556.4	RP7500E						

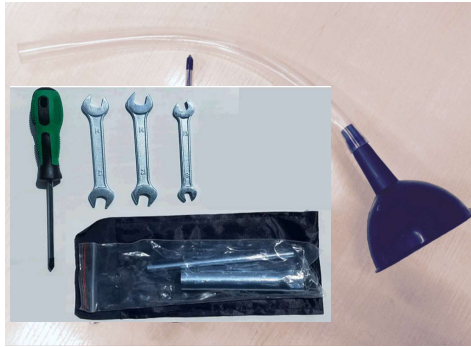


STARTER MOTOR ASSY.

REF.NO.	Description	CAT Part Number	Group QTY	L mm	W mm	H mm	Weight g	Model	CAT Group Part Number	Group Name	L mm	W mm	H mm	Weight kg
1	MOTOR, STARTING	511-8812	1	210	140	140	1850	RP7500E	512-8325	MOTOR GP-ELECSTG	210	140	200	1.985
2	BOLT			45	20	20	18.4	RP7500E						
3	RELAY, STARTING	501-5095	1	66	58	40	135	RP7500E						
4	BOLT			21	11	11	4	RP7500E						

FULL ENGINE ASSY.

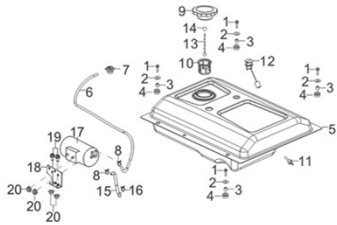
REF.NO.	Description	CAT Part Number	Group QTY	L mm	W mm	H mm	Weight g	Model	CAT Group Part Number	Group Name	L mm	W mm	H mm	Weight kg
E00-1	ENGINE R420D-V	511-8016	1					RP7500E						



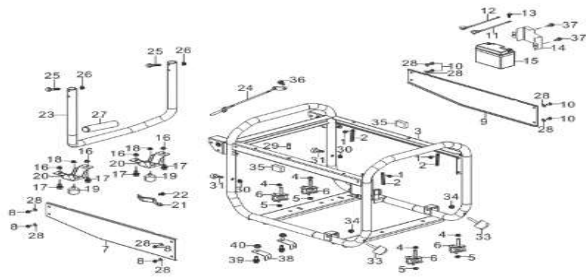
TOOL KIT.

REF.NO.	Description	CAT Part Number	Group QTY	L mm	W mm	H mm	Weight g	Model	CAT Group Part Number	Group Name	L mm	W mm	H mm	Weight kg
1	SPARK PLUG WRENCH KIT		1	155	23	23	137	RP7500E	501-5146	TOOL GP	230	120	40	0.424
2	SCREWDRIVER		1	210	33	33	85	RP7500E						
3	SPANNER, DOUBLE ENDED		2	135	30	5	67	RP7500E						
4	SPANNER, DOUBLE ENDED		1	120	13	4	48	RP7500E						
5	TOOL KIT BAG		1	230	120	20	20	RP7500E						
6	FUNNEL, FILLING OIL	501-5147	1	380	110	80		RP7500E						
7	POWER CORD 25' L14-30P TO (4) 5-20R	502-3692	1					RP6500						

CARB Version



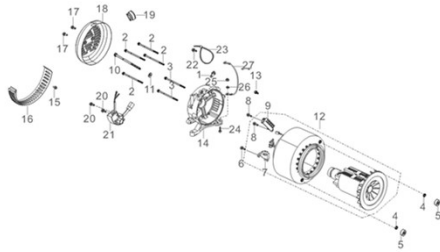
REF.NO.	Description	CAT Part Number	Group QTY	L mm	W mm	H mm	Weight g	Model	CAT Group Part Number	Group Name	L mm	W mm	H mm	Weight kg
6	HOSE, FUEL STEAM RUBBER		1	870	10	10	43	RP7500E	512-8326	VENT GP-FUEL	150	150	50	0.072
7	ROLLOVER VALVE		1	33	50	33	24.2	RP7500E						
8	CLAMP		2	20	9	10	1.6	RP7500E						
16	CLAMP		1	20	8	20	1.6	RP7500E						
15	HOSE, AIR CLEANER RUBBER		1	175	38	10	16	RP7500E	512-8327	DISPOSAL GP -A	185	105	150	0.5936
17	COLLECTOR, FUEL STEAM		1	185	105	90	422	RP7500E						
18	ASSEMBLY PLATE, FUEL STEAM COLLECTOR		1	102	70	23	136	RP7500E						
19	BOLT		2	18	13.5	13.5	6.5	RP7500E						
20	NUT		4	15	6	15	6.8	RP7500E						



RP7500E CARB

REF.NO.	Description	CAT Part Number	Group QTY	L mm	W mm	H mm	Weight g	Model	CAT Group Part Number	Group Name	L mm	W mm	H mm	Weight kg
1	BOLT		2	18	13.5	13.5	6.5	RP7500E	512-8328	FRAME GP	780	580	530	8.5675
2	CLIP		2	100	12	2	5	RP7500E						
3	FRAME ASSY		1	780	530	580	8400	RP7500E						
29	PROTECT RUBBER		1	13	10	10	1	RP7500E						
30	NYLON NUT		2	8.65	8	5	3	RP7500E						
31	ISOLATOR		2	11.5	19.5	19.5	5	RP7500E						
33	RUBBER CUSHION		2	67	34	34	55	RP7500E						
34	CAP NUT		2	8.7	8.7	5	0.5	RP7500E						
35	SOUND ABSORBING COTTON		2	50	25	25	0.5	RP7500E						

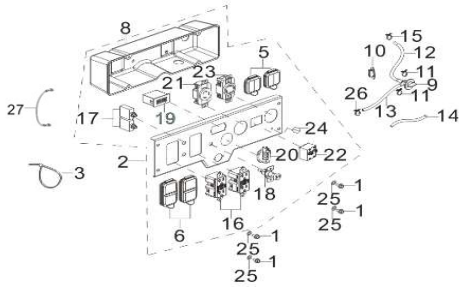
FIG.18 ROTOR/STATOR (F63)



REF.NO.	Description	CAT Part Number	Group QTY	L mm	W mm	H mm	Weight g	Model	CAT Group Part Number	Group Name	L mm	W mm	H mm	Weight kg
20	BOLT		2	21	11	11	4	RP7500E CSA	530-1263	REGULATOR GP -H	240	65	60	0.257
21	REGULATOR, VOLTAGE		1	155	65	55	256.8	RP7500E CSA						
28	GEN HEAD ASSY(include F17-1 to 27)	501-5440	1	400	250	250	31280	RP6500E						

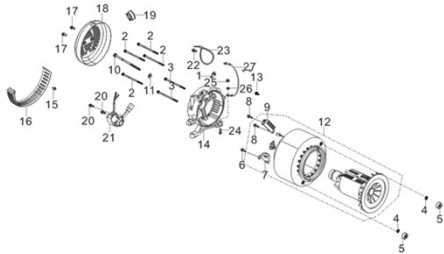
RP7500E CSA Version

FIG.17 PANEL SUBASSEMBLY, CONTROL (F62)

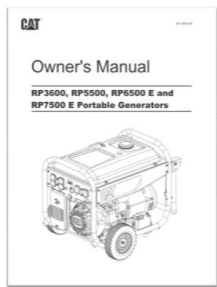


REF.NO.	Description	CAT Part Number	Group QTY	L mm	W mm	H mm	Weight g	Model	CAT Group Part Number	Group Name	L mm	W mm	H mm	Weight kg
2	PANEL SUBASSEMBLY, CONTROL	501-5110	1	450	140	150	1958	RP7500E						
8	COVER, PANEL REAR	511-8894	1	392	115	100	224	RP7500E CSA						
22	CIRCUIT BREAKER, TWO-POLE	501-5111	1					RP7500E						
27	GROUND WIRE	530-1269	1					RP7500E CSA/EPA/CARB						

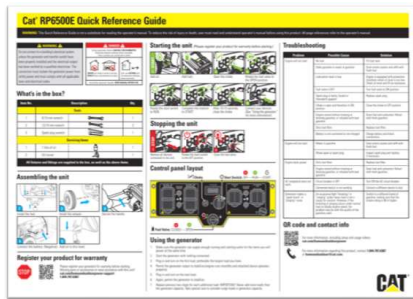
FIG.18 ROTOR/STATOR (F63)



REF.NO.	Description	CAT Part Number	Group QTY	L mm	W mm	H mm	Weight g	Model	CAT Group Part Number	Group Name	L mm	W mm	H mm	Weight kg
12	MOTOR ASSY.		1	300	193	193	29000	RP7500E						
20	BOLT		2	21	11	11	4	RP7500E CSA						
21	REGULATOR, VOLTAGE		1	155	65	55	256.8	RP7500E CSA	530-1263	REGULATOR GP -H	240	65	60	0.257
28	GEN HEAD ASSY(Include items 1 - 27)	501-5441	1	400	250	250	31680	RP7500E						



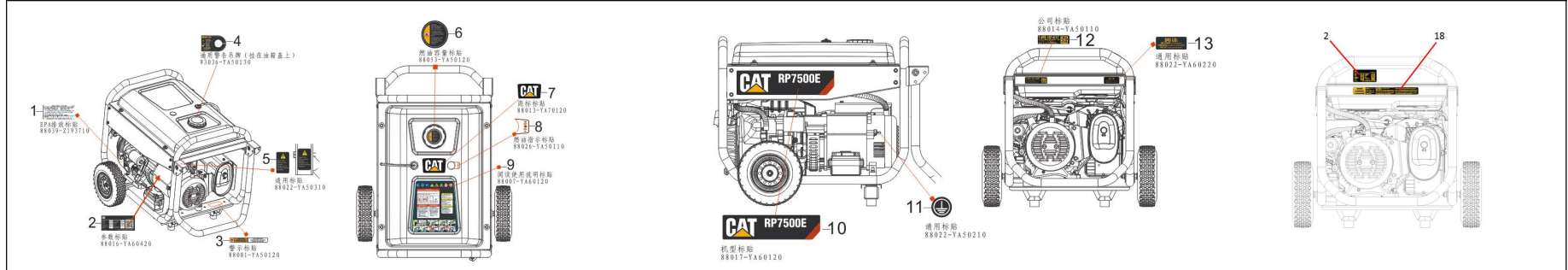
18



19

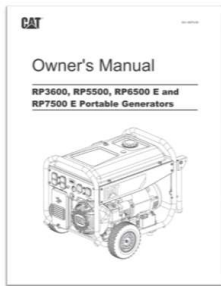
REF.NO.	Description	CAT Part Number	Group QTY	L mm	W mm	H mm	Weight g	Model	CAT Group Part Number	Group Name	L mm	W mm	H mm	Weight kg
18	MANUAL	501-6075	1	212	275			RP7500E						
19	QUICK START GUIDE EPA/CARB	501-5132	1	207	142.5			RP6500E						
19	QUICK START GUIDE CSA	501-5126	1	207	142.5			RP6500E						

RP7500E FIG.21 DECALS/MANUAL/QSG(E00)
FIG.21 DECALS/MANUAL/QSG(E00)

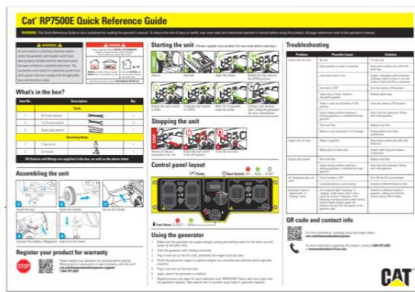


REF.NO.	Description	CAT Part Number	Group QTY	L mm	W mm	H mm	Weight g	Model	CAT Group Part Number	Group Name	L mm	W mm	H mm	Weight kg
2	LABEL, SPEC EPA	501-5410	1	114	51			RP7500 E						
2	LABEL, SPEC CARB		1	114	51			RP7500 E						
7	LABEL, TRADEMARK		1	105	64									
10	LABEL, MODEL LEFT		1	363	90			RP7500 E						
15	LABEL, MODEL RIGHT		1	363	90			RP7500 E	501-5127	FILM GP	363	90	6	0.056
17	LABEL, RECOIL LOGO		1	62	38									
12	LABEL, QR CODE		1	87.5	25			RP7500 E	501-5430	FILM GP	105	25	4	0.004
19	LABEL, COMBINED WEIGHT & RATING		1	105	25									

31300-YA70210-0000



18



19

REF.NO.	Description	CAT Part Number	Group QTY	L mm	W mm	H mm	Weight g	Model	CAT Group Part Number	Group Name	L mm	W mm	H mm	Weight kg
19	QUICK START GUIDE EPA/CARB	501-5133	1	207	142.5			RP7500 E						
19	QUICK START GUIDE CSA	501-5129	1	207	142.5			RP7500 E						
20	MANUAL	501-6075	1	212	275			RP7500E						

Last Update May 09, 2022

RP3600, RP5500, RP6500 E, RP7500 E and RP12000 E Compatible

Features

- All components necessary to complete standard maintenance
- Manufacturer approved kit that includes genuine parts
- Helps to maintain reliability and efficiency
- Reduces the risk of unplanned repairs



Kit Contents

RP3600

- Oil Bottle 32 Fl. Oz. (946 ml)
- Spark Plug
- Air Filter

RP5500

- Oil Bottle 32 Fl. Oz. (946 ml)
- Spark Plug
- Air Filter

RP6500 E and RP7500E

- Oil Bottle 32 Fl. Oz. (946 ml)
- Spark Plug
- Air Filter

RP12000 E

- Oil Bottle 32 Fl. Oz. (946 ml) x 2
- Spark Plug x 2
- Air Filter
- Oil Filter

Weights & Dimensions (Packaged)

Weight lb (kg)	1.18 (0.54)
Length in (mm)	8 (235)
Width in (mm)	5 (127)
Height in (mm)	4 (102)

Weight lb (kg)	1.97 (0.89)
Length in (mm)	9 (203)
Width in (mm)	6 (152)
Height in (mm)	4 (102)

Weight lb (kg)	1.97 (0.89)
Length in (mm)	9 (203)
Width in (mm)	6 (152)
Height in (mm)	4 (102)

Weight lb (kg)	5.5 (2.5)
Length in (mm)	8.07 (205)
Width in (mm)	6.89 (175)
Height in (mm)	9.45 (240)

Cat® Part Number

502-3702

502-3703

502-3704

501-3704

Dealer Contact Information