



320D/320D2 HYDRAULIC EXCAVATORS PARTS REFERENCE GUIDE

LET'S DO THE WORK.™




PROTECT YOUR INVESTMENT WITH GENUINE CAT® PARTS

Thank you for selecting the Cat® 320D/320D2 Hydraulic Excavator.

This guide is designed to provide you with a quick reference for the parts and part numbers you need to keep your Cat 320D/320D2 Hydraulic Excavator running at peak efficiency.



MAINTENANCE

Proactive preventative maintenance extends the life of your machine and protects your investment. Only Caterpillar knows Cat equipment's filtration and lubrication requirements and offers parts kits to match your machine's maintenance cycles.

SCHEDULED MAINTENANCE PARTS	
	GREASES
	PLANNED MAINTENANCE KITS

REPLACEMENT PARTS

Proper maintenance minimizes the need for repair and replacement. In the event that replacement parts are required, the use of genuine Cat parts helps maximize machine performance and maintains high resale value.

WEAR PARTS	
	PINS AND BUSHING
	UNDERCARRIAGE
	GROUND ENGAGING TOOLS
REPAIR PARTS	
	CAB GLASS
	HOODS/DOORS/CAPS
	CAB ACCESSORIES, MIRRORS AND LIGHTS
	BUMPERS AND GUARDS
	ENGINE PARTS
	CYLINDER PARTS

GREASES

	STANDARD MAINTENANCE GREASES		
Previous Cat Product Name	Cat Ultra 5 Moly #1	Cat Ultra 5 Moly #2	Cat Advanced 3 Moly
Current Cat Product Name	Cat Extreme Application Grease 1	Cat Extreme Application Grease 2	Cat Prime Application Grease
Grade (NLGI)	1	2	2
Melting point (deg C)	260	260	260
Ambient Temperature (deg C)	-35 to +40	-30 to +50	-20 to +40
Base Oil Type	Mineral	Mineral	Mineral
Color	Dark Gray	Dark Gray	Dark Gray
Cartridge (390 g / 14 oz)	452-5996	452-6001	452-6006
Plastic Pail (5 kg / 11 lb)	-	-	-
Plastic Pail (16 kg / 35 lb)	452-5999	452-6004	452-6009
Keg (55 kg / 120 lb)	452-5998	452-6003	452-6008
Drum (180 kg / 400 lb)	452-5997	452-6002	452-6007

GREASES FOR UNIQUE APPLICATIONS AND ENVIRONMENTS			
Cat Arctic Platinum	Cat Desert Gold	Cat Multipurpose	Hammer Paste
Cat Extreme Application Grease - Arctic	Cat Extreme Application Grease - Desert	Cat Utility Grease	
0	2	2	2
230	280	260	230
-35 to +40	-30 to +50	-30 to +40	-20 to +1100
Semi-Synthetic	Mineral	Mineral	Mineral
Dark Grey	Dark Grey	Blue	Bronze
508-2184	452-6016	452-6011	130-6951 (standard) 317-8491 (autolube)
-	-	-	133-8807
508-2187	452-6019	452-6014	-
508-2186	452-6018	452-6013	-
508-2185	452-6017	452-6012	-



PLANNED MAINTENANCE KITS

EXCAVATOR		A					
		Engine Oil/Filter Change		Secondary Fuel Filter Change		Crankcase Breather	Water Separator
Sales Model	Serial Number Prefix	Filter Element	Oil Qty (L) DEO-ULS™	Secondary	Third	Seal O-Ring	Element / Seal
320D	KGF	1R-0739	8	1R-0751	1R-0751	294-1774	326-1644 / 382-0664
	GDP						326-1644 / 220-8678
320D2	DNS, ZCS, RAR	322-3155	5	1R-1804	–	–	438-5386

PARTS MAINTENANCE KITS				
MACHINE HOURS	500	A		
	1000	A	B	
	1500	A		
	2000	A	B	C
	2500	A		
	3000	A	B	
	3500	A		
	4000	A	B	C
	4500	A		
	5000	A	B	
	5500	A		
6000	A	B	C	

EXCAVATOR		B				C				
		Hydraulic Oil Filter (Pilot)	Case Drain Oil Filter	Inlet/Exhaust Valve	Swing Drive Oil	AC Receiver Dryer	Hydraulic Oil/Filter Change	Final Drive	Final Drive Oil Change (Each Side)	
Sales Model	Serial Number Prefix	Filter Assembly	Element	Gasket	Oil Qty (L)	Accumulator Group	Filter Element	Seal	Seal	Oil Qty (L) GO
320D	KGF	5I-8670	093-7521	294-1706	3	176-1902	179-9806	123-2003	–	5
	GDP				2				7M-8485	4
320D2	DNS, ZCS, RAR			256-7704	3					5

EXCAVATOR		WHEN REQUIRED						
		Air Filter		Cabin Air		Lubricate Machine	Engine Crankcase	Hydraulic Tank
Sales Model	Serial Number Prefix	Primary Element	Secondary Element	Fresh Air Element	Air Conditioner Element	Grease Adv 3Moly	Breather Element	Breather Element
320D	KGF	131-8822	131-8821	293-1183	245-7823	452-6006	5I-7725	227-0590
	GDP			327-6618		5P-0960		
320D2	DNS, ZCS	528-7222	529-0132	293-1184	546-0006	452-6006	–	
	RAR					5P-0960		

HOODS/DOORS/CABS

Machine Model		Hoods/Doors/Cabs					
Sales Model	Serial Number Prefix	Engine Hood	Air Cleaner, Battery Access	Radiator Access	Radiator Fill Cap	Hydraulic Tanks	Pump Compartment Access
320D	KGF	259-3687	298-2977	289-6911	360-9274	298-2979	289-6913
	GDP	259-3687	346-2777	289-6911	360-9274	298-2979	289-6913
320D2	DNS	466-1052	422-5388	421-4416	416-0965	399-0819	425-6092
	ZCS	423-5183	422-5388	438-2507	416-0965	396-9388	425-6092
	RAR	466-1052	422-5388	421-4416	416-0965	396-9388	425-6092



WIPERS/VISORS/MIRRORS/LIGHTS

Machine Model		Wipers/Visors/Mirrors/Lights				
Sales Model	Serial Number Prefix	Window Wiper, Front Upper	Window Wiper, Front Lower	Visors	Mirrors	Flood Lights
320D	KGF	234-6594	-	161-3750 (Rain) 161-3751 (Sun)	142-3836 (Rear View) 330-1162 (Down View, Right)	366-9343
	GDP	327-6551	327-6489	316-8838 (Rain) 336-1140 (Sun)	142-3836 (Rear View) 330-1162 (Down View, Right)	153-2523
320D2	DNS	436-1116	-	-	142-3836 (Rear View) 330-1162 (Down View, Right)	153-2523
	ZCS	234-6594	-	161-3750 (Rain) 161-3751 (Sun)	142-3836 (Rear View)	366-9343
	RAR	436-1116	-	161-3750 (Rain) 161-3751 (Sun)	142-3836 (Rear View) 330-1162 (Down View, Right)	366-9343

GET BUCKET TEETH

Description	Heavy Duty J Series			General Duty J Series (Africa/Middle East and Russia only)			K Series		CAT® Advansys™	
	J300	J350	J400	J300	J350	J400	K80	K90	Advansys 80	Advansys 90
Penetration Plus	195-9180	168-1359	168-1409	450-7556	389-5743	389-5745	475-5470	475-5482	505-4083	505-4097
General Purpose		1U-3352	7T-3402				475-5473	475-5484	505-4086	505-4096
Heavy Duty									505-3982	505-3993
Heavy Duty Long Life (ARM)									505-3983	505-3993
Leveling Edge Conversion (LEC)									505-3985	505-3995
Wide	4T-2215	107-3350	107-3400				475-5474	475-5485	505-4080	505-4096
Penetration	3G-3237	9J-4359	6Y-7409				475-5469	475-5481	505-4081	505-4091
Penetration Long Life (ARM)		119-9359	124-7409				475-5478	475-5489	505-4082	505-4092
Extra Duty Long Life (ARM)							475-5477	475-5488		
Extra Duty							475-5468	475-5480		
Spike		168-1350	159-0400				475-5471	475-5483	505-4084	505-4098
Double Spike		135-9357	135-9408				475-5472	475-5491		
Abrasion, Heavy Duty	8E-3756									
Long	9J-3167			449-2159	449-2161	449-2164				
Long, Heavy Duty	8E-3751			449-2160	449-2162	389-5744				
Standard	9J-3175			539-5738**	539-5783**					
Rock Chisel					TBD	539-5748**				
Pin	132-4766	114-0358	116-7408	132-4766	114-0358	116-7408				
Retainer	149-5733	114-0359	116-7409	149-5733	114-0359	116-7409	220-9090	220-9090		

** Sold as a kit. Includes Tip, Pin and Retainer Assembly.

ENGINE PARTS

Machine Model		Engine Parts									
Sales Model	Serial Number Prefix	Starter Motor	Battery	Alternator	Water Pump	Fuel Injector Pump	Fuel Priming Pump	Turbocharger	Fuel Injector	Glow Plug	Crankcase Breather
320D	KGF	--	3T-5760	212-8561	178-6633	326-4635 10R-7662*	390-4679	287-0049	326-4700 10R-7675*	--	51-7725
	GDP	--	3T-5760 115-2422 (Cold Weather)	212-8561	178-6633	326-4635 10R-7662*	390-4679	287-0049	326-4700 10R-7675*	--	51-7725
320D2	DNS	--	3T-5760 263-9574 (Cold Weather)	344-5081 20R-0958*	485-4894	463-1678 20R-4819*	--	431-4572	454-5091	462-2238	--
	ZCS	--	3T-5760 263-9574 (Cold Weather)	344-5081 20R-0958*	485-4894	398-1498 (Type 1) 463-1678 (Type 2) 20R-4819*	--	431-4572	454-5091	462-2238	--
	RAR	--	3T-5760 263-9574 (Cold Weather)	344-5081 20R-0958*	485-4894	398-1498 (Type 1) 463-1678 (Type 2) 20R-4819*	--	431-4572	454-5091	462-2238	--

* - Reman Parts

CAB GLASS

Machine Model		Door Window	Cab Windows
Sales Model	Serial Number Prefix		
320D	KGF	151-6792	207-0144 (Upper) 176-1958 (Lower) 235-8909 (Right, Left and Rear Windows)
	GDP	383-5650	363-9610 (Upper) 340-6695 (Lower Front, Rear, Right and Left Windows)
320D2	DNS	151-6792	388-9109 (Upper) 388-9108 (Lower) 388-9107 (Right, Left and Rear Windows)
	ZCS	151-6792	207-0144 (Upper) 388-9108 (Lower) 388-9107 (Right, Left and Rear Windows)
	RAR	151-6792	207-0144 (Upper) 388-9108 (Lower) 388-9107 (Right, Left and Rear Windows)

UNDERCARRIAGE

Machine Model		Undercarriage			
Sales Model	Serial Number Prefix	Rollers	Sprockets	Steel Track Assembly	Steel Track Shoe
320D	MZD	8E-5600 163-4143 Single Flange	8E-9805	590-4585 600mm, Triple Grouser Greased Lubricated Track	590-4583 (Link Assembly) 126-5062 (Shoe) 9W-3619 (Bolt) 9W-3361 (Nut)
	GDP	8E-5600 163-4143 Single Flange	8E-9805	590-4585 600mm, Triple Grouser Greased Lubricated Track	590-4583 (Link Assembly) 126-5062 (Shoe) 9W-3619 (Bolt) 9W-3361 (Nut)
320D2	DNS	8E-5600 423-3580 Single Flange	8E-9805	590-4585 600mm, Triple Grouser Greased Lubricated Track	590-4583 (Link Assembly) 126-5062 (Shoe) 9W-3619 (Bolt) 9W-3361 (Nut)
	ZCS	8E-5600 348-1867 Single Flange	8E-9805	590-4585 600mm, Triple Grouser Greased Lubricated Track	590-4583 (Link Assembly) 126-5062 (Shoe) 9W-3619 (Bolt) 9W-3361 (Nut)
	RAR	8E-5600 348-1867 Single Flange	8E-9805	590-4585 600mm, Triple Grouser Greased Lubricated Track	590-4583 (Link Assembly) 126-5062 (Shoe) 9W-3619 (Bolt) 9W-3361 (Nut)



CYLINDER PARTS

Machine Model		Cylinder Parts			
Sales Model	Serial Number Prefix	Boom	Stick	Bucket	
		Lines Group	Lines Group	Lines Group	
320D	KGF	242-6732 (Left) 242-6737 (Right)	369-9673 242-6735 266-8024	225-4592 242-6757 242-6771 248-9926 266-8025 266-8044 369-9677 548-9601 548-9604 127-6797 (Long Reach) 418-9086 (Long Reach)	
				GDP	242-6732 (Left) 242-6737 (Right)
320D2	DNS	242-6732 (Left) 242-6737 (Right)	369-9673 242-6735 266-8024		
				ZCS	242-6732 (Left) 242-6737 (Right)
		RAR	242-6732 (Left) 242-6737 (Right)		
		266-8022 (Left) 266-8023 (Right)	266-8024		

CYLINDER PARTS

Machine Model		Cylinder Parts				
Sales Model	Serial Number Prefix	Boom	Stick		Bucket	
		Tube \ Rod \ Seal Kit	Tube \ Rod \ Seal Kit		Tube \ Rod \ Seal Kit	
320D	KGF	247-8866 (Tube) 247-8867 (Rod) 247-8868 (Seal Kit)	234-4577 (Tube) 234-4578 (Rod) 234-4576 (Seal Kit) 350-0974 (Seal Kit)	247-8881 (Tube) 247-8882 (Rod) 247-8878 (Seal Kit) 259-0775 (Seal Kit) 266-8012 (Seal Kit) 350-0970 (Seal Kit)	234-4588 (Tube) 234-4589 (Rod) 20R-9530 (Rod)* 234-4587 (Seal Kit) 259-0656 (Seal Kit) 266-8045 (Seal Kit) 350-0976 (Seal Kit)	
			352-1099 (Tube) 352-1105 (Rod) 464-2937 (Artic Seal Kit)	486-0797 (Tube) 350-9344 (Rod) 20R-9556 (Rod)* 526-6137 (Seal Kit)	352-1100 (Tube) 352-1106 (Rod) 20R-6477* 266-8057 (Seal Kit) 456-0207 (Seal Kit)	
320D2	GDP	247-8866 (Tube) 247-8867 (Rod) 247-8868 (Seal Kit) 266-7891 (Seal Kit) 266-8011 (Seal Kit) 350-0962 (Seal Kit)	234-4577 (Tube) 234-4578 (Rod) 234-4576 (Seal Kit) 350-0974 (Seal Kit)	247-8881 (Tube) 247-8882 (Rod) 247-8878 (Seal Kit) 259-0775 (Seal Kit) 266-8012 (Seal Kit) 350-0970 (Seal Kit)	234-4588 (Tube) 234-4589 (Rod) * 20R-9530 (Rod) 234-4587 (Seal Kit) 259-0656 (Seal Kit) 266-8045 (Seal Kit) 350-0976 (Seal Kit)	
			352-1096 (Tube) 352-1102 (Rod) 20R-6475 (Rod)* 456-0207 (Seal Kit) 464-2932 (Artic Seal Kit)	486-0797 (Tube) 350-9344 (Rod) 20R-9556 (Rod)* 526-6137 (Seal Kit)	289-7700 (Tube) 289-7743 (Rod) 283-6179 (Seal Kit)	360-0074 (Tube) 234-4589 (Rod) 20R-9530 (Rod)* 456-0209 (Seal Kit) 464-2935 (Artic Seal Kit)
			352-1099 (Tube) 352-1105 (Rod) 456-0200 (Seal Kit) 464-2937 (Artic Seal Kit)	352-1098 (Tube) 352-1104 (Rod) 20R-6476 (Rod)* 266-8012 (Seal Kit) 456-0200 (Seal Kit)	358-2110 (Tube) 289-7743 (Rod) 349-4121 (Kit Seal)	352-1100 (Tube) 352-1106 (Rod) 20R-6477* 266-8057 (Seal Kit) 456-0207 (Seal Kit)
320D2	ZCS	247-8866 (Tube) 247-8867 (Rod) 350-0962 (Seal Kit)	486-0797 (Tube) 350-9344 (Rod) 20R-9556 (Rod)* 526-6137 (Seal Kit)	352-1099 (Tube) 352-1105 (Rod) 456-0200 (Seal Kit)	360-0074 (Tube) 234-4589 (Rod) 20R-9530 (Rod)* 456-0209 (Seal Kit)	
			352-1096 (Tube) 352-1102 (Rod) 20R-6475 (Rod)* 456-0207 (Seal Kit) 464-2932 (Artic Seal Kit)	352-1098 (Tube) 352-1104 (Rod) 20R-6476 (Rod)* 456-0200 (Seal Kit) 464-2937 (Artic Seal Kit)	247-8876 (Tube) 247-8877 (Rod) 350-0971 (Seal Kit)	352-1100 (Tube) 352-1106 (Rod) 20R-6477* 456-0207 (Seal Kit) 464-2932 (Artic Seal Kit)
			486-0797 (Tube) 350-9344 (Rod) 20R-9556 (Rod)* 526-6137 (Seal Kit)	352-1099 (Tube) 352-1105 (Rod) 456-0200 (Seal Kit)	358-2110 (Tube) 289-7743 (Rod) 349-4121 (Kit Seal)	390-4219 (Tube) 390-4220 (Rod) 390-4227 (Seal Kit)
320D2	RAR	352-1096 (Tube) 352-1102 (Rod) 20R-6475 (Rod)* 456-0207 (Seal Kit) 464-2932 (Artic Seal Kit)	486-0797 (Tube) 350-9344 (Rod) 20R-9556 (Rod)* 526-6137 (Seal Kit)	352-1099 (Tube) 352-1105 (Rod) 456-0200 (Seal Kit)	360-0074 (Tube) 234-4589 (Rod) 20R-9530 (Rod)* 456-0209 (Seal Kit)	
			352-1099 (Tube) 352-1104 (Rod) 20R-6476 (Rod)* 456-0200 (Seal Kit) 464-2937 (Artic Seal Kit)	352-1100 (Tube) 352-1106 (Rod) 20R-6477* 456-0207 (Seal Kit) 464-2932 (Artic Seal Kit)	390-4219 (Tube) 390-4220 (Rod) 390-4227 (Seal Kit)	
			352-1096 (Tube) 352-1102 (Rod) 20R-6475 (Rod)* 456-0207 (Seal Kit) 464-2932 (Artic Seal Kit)	352-1098 (Tube) 352-1104 (Rod) 20R-6476 (Rod)* 456-0200 (Seal Kit) 464-2937 (Artic Seal Kit)	352-1100 (Tube) 352-1106 (Rod) 20R-6477* 456-0207 (Seal Kit) 464-2932 (Artic Seal Kit)	390-4219 (Tube) 390-4220 (Rod) 390-4227 (Seal Kit)



* - Reman Parts

BUMPERS AND GUARDS

Machine Model		Bumpers and Guards				
Sales Model	Serial Number Prefix	Bumpers	Window Guards	Vandal Guards	Backup Alarm	Rear View Camera
320D	KGF	278-9257	489-5105 (Front) 165-0535 (Lower)	–	231-1771	313-7833
	GDP	337-1707	489-5106 (Front)	471-1983	231-1771	313-7833
320D2	DNS	–	–	–	231-1771	459-0359
	ZCS	–	–	–	231-1771	–
	RAR	–	–	–	231-1771	459-0359

PUMPS AND MOTORS

Machine Model		Pumps and Motors			
Sales Model	Serial Number Prefix	Head Pump	Aux Pump	Swing Motor (applicable serial number effectivity)	Travel Motor
320D	KGF	256-0093 (Drive) 256-0096 (Driven)	200-3365	158-8986 (KGF00001-KGF03041) 334-9968 (KGF03042-KGF99999) 20R-0075*	209-5992 10R-2154*
	GDP	256-0093 (Drive) 256-0096 (Driven)	200-3365	334-9968 20R-0075*	209-5992 10R-2154*
320D2	DNS	344-5281 (Drive) 344-5282 (Driven)	--	334-9968 20R-0075* 465-5180 20R-8808*	209-5992 10R-2154*
	ZCS	256-0093 (Drive) 256-0096 (Driven)	200-3365	334-9968 20R-0075*	209-5992 10R-2154*
	RAR	--	200-3365	334-9968 20R-0075* 465-5180 20R-8808*	209-5992 10R-2154*

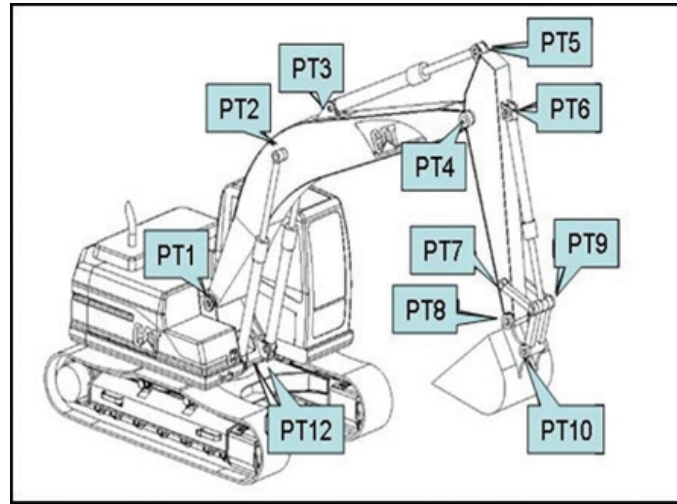
*Reman Part Number

ENGINE KITS

Machine Model		Engine Kits	
Sales Model	Serial Number Prefix	Description	Kit Number
320D	KGF	Engine Air Cleaner Kit	272-4773
	GDP	Engine Air Cleaner Kit	272-4773
320D2	DNS	Engine Air Cleaner Kit	272-4773
	ZCS	Engine Air Cleaner Kit	272-4773
	RAR	Engine Air Cleaner Kit	450-5325
320D	KGF	Engine Overhaul Kit	482-2083
	GDP	Engine Overhaul Kit	482-2083



EXCAVATOR LINKAGE CONFIGURATION



Name	Location
PT1	Boom foot
PT2	Boom cylinder
PT3	Stick cylinder
PT4	Boom nose or Stick pivot
PT5	Stick cylinder
PT6	Bucket cylinder
PT7	Idler link stick end
PT8	Stick nose
PT9	Bucket cylinder
PT10	Power link bucket end
PT12	Boom cylinder

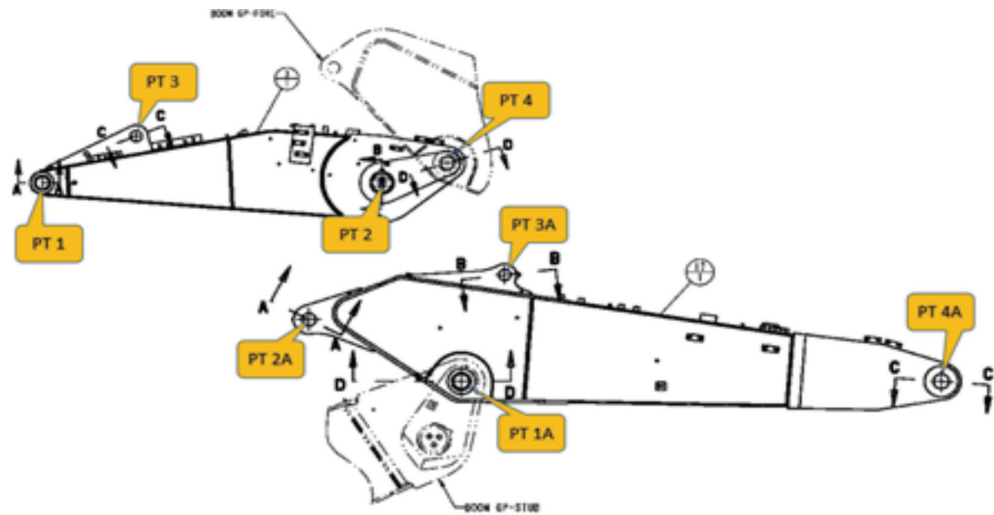


Linkage	Configurations
B Linkage	Reach
CB Linkage	Mass

LINKAGE PIN PART NUMBERS															
Sales Model	Serial Number Prefix	Configuration			PT1	PT2	PT3	PT4	PT5	PT6	PT7	PT8	PT9	PT10	PT12
		Linkage Type	Boom Type	Stick Type	Boom Foot	Boom Cylinder Rod End	Stick Cylinder Head End	Boom Nose or Stick Pivot	Stick Cylinder Rod End	Bucket Cylinder Head End	Idler Link Stick End	Stick Nose	Bucket	Power	Boom
320D	KGF	B1	Reach	Reach	315-0800 Pin Assembly	176-2278 Pin	4I-4809 Pin Assembly	264-1702 Pin Assembly	4I-4809 Pin Assembly	4I-4811 Pin Assembly	254-3052 Pin	087-5805 Pin	254-3053 Pin	087-5805 Pin	(2) 154-080 Pin Assembly
		CB2	Reach	Reach		176-2278 Pin	4I-4809 Pin Assembly	264-1702 Pin Assembly	4I-4809 Pin Assembly	4I-4814 Pin Assembly	186-5662 Pin	234-3931 Pin Assembly	234-3930 Pin	234-3931 Pin Assembly	
		Long Reach	Long Reach	Long Reach		176-2278 Pin	4I-4618 Pin Assembly	250-2402 Pin Assembly	4I-4618 Pin Assembly	7Y-6627 Pin Assembly	7I-6843 Pin	086-0523 Pin	248-7820 Pin	086-0523 Pin	
		Demolition	Long Reach	Long Reach		176-2278 Pin	4I-4618 Pin Assembly	250-2402 Pin Assembly	4I-4618 Pin Assembly	127-3913 Pin Assembly	254-3052 Pin	087-5805 Pin	254-3053 Pin	087-5805 Pin	
320D	GDP	CB2	Reach	Mass		176-2278 Pin	4I-4809 Pin Assembly	264-1702 Pin Assembly	4I-4809 Pin Assembly	4I-4811 Pin Assembly	186-5662 Pin	234-3931 Pin Assembly	234-3930 Pin	234-3931 Pin Assembly	
		B1	Reach	Reach	315-0800 Pin Assembly	176-2278 Pin	4I-4809 Pin Assembly	264-1702 Pin Assembly	4I-4809 Pin Assembly	4I-4811 Pin Assembly	254-3052 Pin	087-5805 Pin	254-3053 Pin	087-5805 Pin	(2) 154-080 Pin Assembly
		Long Reach	Long Reach	Long Reach		176-2278 Pin	4I-4618 Pin Assembly	250-2402 Pin Assembly	4I-4618 Pin Assembly	127-3913 Pin Assembly	7I-6843 Pin	086-0523 Pin	248-7820 Pin	086-0523 Pin	
320D2	DNS	CB2	Long Reach	Mass		176-2278 Pin	4I-4618 Pin Assembly	250-2402 Pin Assembly	4I-4809 Pin Assembly	4I-4811 Pin Assembly	186-5662 Pin	234-3931 Pin Assembly	234-3930 Pin	234-3931 Pin Assembly	
		B1	Reach	Reach	315-0800 Pin Assembly	176-2278 Pin	4I-4809 Pin Assembly	264-1702 Pin Assembly	4I-4809 Pin Assembly	4I-4811 Pin Assembly	254-3052 Pin	087-5805 Pin	254-3053 Pin	087-5805 Pin	(2) 154-080 Pin Assembly
320D2	ZCS	Long Reach	Long Reach	Long Reach		176-2278 Pin	4I-4618 Pin Assembly	250-2402 Pin Assembly	4I-4618 Pin Assembly	127-3913 Pin Assembly	7I-6843 Pin	086-0523 Pin	248-7820 Pin	086-0523 Pin	
		B1	Reach	Reach	315-0800 Pin Assembly	176-2278 Pin	4I-4809 Pin Assembly	264-1702 Pin Assembly	4I-4809 Pin Assembly	4I-4811 Pin Assembly	254-3052 Pin	087-5805 Pin	254-3053 Pin	087-5805 Pin	(2) 154-080 Pin Assembly
		CB2	Mass	Mass		176-2278 Pin	4I-4809 Pin Assembly	264-1702 Pin Assembly	4I-4809 Pin Assembly	4I-4811 Pin Assembly	186-5662 Pin	234-3931 Pin Assembly	234-3930 Pin	234-3931 Pin Assembly	
320D2	RAR	B1	Reach	Reach	315-0800 Pin Assembly	176-2278 Pin	4I-4809 Pin Assembly	264-1702 Pin Assembly	4I-4809 Pin Assembly	4I-4811 Pin Assembly	254-3052 Pin	087-5805 Pin	254-3053 Pin	087-5805 Pin	(2) 154-080 Pin Assembly
		Long Reach	Long Reach	Long Reach		176-2278 Pin	4I-4618 Pin Assembly	250-2402 Pin Assembly	4I-4618 Pin Assembly	127-3913 Pin Assembly	7I-6843 Pin	086-0523 Pin	248-7820 Pin	086-0523 Pin	
		CB2	Mass	Mass		176-2278 Pin	4I-4809 Pin Assembly	264-1702 Pin Assembly	4I-4809 Pin Assembly	4I-4811 Pin Assembly	186-5662 Pin	234-3931 Pin Assembly	234-3930 Pin	234-3931 Pin Assembly	

BEARING PART NUMBERS

Sales Model	Serial Number Prefix	PT1	PT2	PT3	PT4	PT5	PT6	PT7	PT8	PT9	PT10	PT12
		Boom Foot	Boom Cylinder Rod End	Stick Cylinder Head End	Boom Nose or Stick Pivot	Stick Cylinder Rod End	Bucket Cylinder Head End	Idler Link Stick End	Stick Nose	Bucket Cylinder Rod End	Power Link Bucket End	Boom Cylinder Head End
320D	KGF	(2) 244-4277 Bushing	(2) 240-2913 Bushing	241-7381 Bushing	(2) 244-4277 Bushing or (2) 228-5615 Bushing	241-7381 Bushing	357-5712 Bushing	(2) 229-1096 Bushing	(2) 240-2913 Bushing	(2) 244-4360 Bushing 241-7382 Bushing	(2) 240-2912 Bushing	(2) 357-5717 Bushing
		(2) 228-5615 Bushing	(2) 240-2913 Bushing	290-9180 Bushing	(2) 244-4277 Bushing	290-9180 Bushing	235-7769 Bushing	(2) 228-5614 Bushing	(2) 228-5615 Bushing	(3) 228-5615 Bushing	(2) 228-5615 Bushing	(2) 357-5717 Bushing
		(2) 244-4277 Bushing	(2) 240-2913 Bushing	290-9180 Bushing	(2) 244-4277 Bushing	290-9180 Bushing	229-1095 Bushing	(2) 229-1095 Bushing	(2) 229-1091 Bushing	(2) 248-7835 Bushing 248-7857 Bushing	(2) 229-1092 Bushing	(2) 241-7379 Bushing
		(2) 228-5615 Bushing	(2) 241-7380 Bushing	290-9180 Bushing	(2) 244-4277 Bushing	290-9180 Bushing	241-7382 Bushing	(2) 229-1095 Bushing	(2) 229-1091 Bushing	(2) 244-4360 Bushing 240-2915 Bushing	(2) 240-2912 Bushing	(2) 357-5717 Bushing
		(2) 244-4277 Bushing	(2) 240-2913 Bushing	241-7381 Bushing	(2) 244-4277 Bushing	241-7381 Bushing	235-7769 Bushing	(2) 228-5614 Bushing	(2) 228-5615 Bushing	(3) 228-5615 Bushing	(2) 228-5615 Bushing	(2) 357-5717 Bushing
320D	GDP	(2) 244-4277 Bushing	(2) 240-2913 Bushing	(2) 357-5711 Bushing	(2) 244-4277 Bushing	240-2914 Bushing	235-7769 Bushing	(2) 229-1096 Bushing	(2) 240-2913 Bushing	(2) 244-4360 Bushing 241-7382 Bushing	(2) 240-2912 Bushing	(2) 357-5717 Bushing
		(2) 244-4277 Bushing	(2) 240-2913 Bushing	290-9180 Bushing	(2) 244-4277 Bushing	290-9180 Bushing	229-1095 Bushing	(2) 229-1095 Bushing	(2) 229-1091 Bushing	(2) 248-7835 Bushing 248-7857 Bushing	(2) 229-1092 Bushing	(2) 241-7379 Bushing
		(2) 228-5615 Bushing	(2) 241-7380 Bushing	241-7381 Bushing	(2) 244-4277 Bushing	241-7381 Bushing	235-7769 Bushing	(2) 228-5614 Bushing	(2) 228-5615 Bushing	(3) 228-5615 Bushing	(2) 228-5615 Bushing	(2) 357-5717 Bushing
320D	DNS	(2) 244-4277 Bushing	(2) 240-2913 Bushing	(2) 357-5711 Bushing	(2) 244-4277 Bushing	240-2914 Bushing	357-5712 Bushing	(2) 229-1096 Bushing	(2) 240-2913 Bushing	(2) 244-4360 Bushing 241-7382 Bushing	(2) 240-2912 Bushing	(2) 357-5717 Bushing
		(2) 228-5615 Bushing	(2) 240-2913 Bushing	290-9180 Bushing	(2) 244-4277 Bushing	290-9180 Bushing	229-1095 Bushing	(2) 229-1095 Bushing	(2) 229-1091 Bushing	(2) 248-7835 Bushing 248-7857 Bushing	(2) 229-1092 Bushing	(2) 357-5717 Bushing
320D	ZCS	(2) 244-4277 Bushing	(2) 240-2913 Bushing	(2) 357-5711 Bushing	(2) 244-4277 Bushing	240-2914 Bushing	235-7769 Bushing	(2) 229-1096 Bushing	(2) 240-2913 Bushing	(2) 244-4360 Bushing 241-7382 Bushing	(2) 240-2912 Bushing	(2) 357-5717 Bushing
		(2) 228-5615 Bushing	(2) 241-7380 Bushing	290-9180 Bushing	(2) 244-4277 Bushing	290-9180 Bushing	229-1095 Bushing	(2) 229-1095 Bushing	(2) 229-1091 Bushing	(2) 248-7835 Bushing 248-7857 Bushing	(2) 229-1092 Bushing	(2) 241-7379 Bushing
		(2) 244-4277 Bushing	(2) 240-2913 Bushing	(2) 357-5711 Bushing	(2) 244-4277 Bushing	240-2914 Bushing	235-7769 Bushing	(2) 228-5614 Bushing	(2) 228-5615 Bushing	(3) 228-5615 Bushing	(2) 228-5615 Bushing	(2) 357-5717 Bushing
320D	RAR	(2) 244-4277 Bushing	(2) 240-2913 Bushing	(2) 357-5711 Bushing	(2) 244-4277 Bushing	240-2914 Bushing	235-7769 Bushing	(2) 229-1096 Bushing	(2) 240-2913 Bushing	(2) 244-4360 Bushing 241-7382 Bushing	(2) 240-2912 Bushing	(2) 357-5717 Bushing
		(2) 228-5615 Bushing	(2) 240-2913 Bushing	290-9180 Bushing	(2) 244-4277 Bushing	290-9180 Bushing	229-1095 Bushing	(2) 229-1095 Bushing	(2) 229-1091 Bushing	(2) 248-7835 Bushing 248-7857 Bushing	(2) 229-1092 Bushing	(2) 357-5717 Bushing
		(2) 244-4277 Bushing	(2) 240-2913 Bushing	(2) 357-5711 Bushing	(2) 244-4277 Bushing	240-2914 Bushing	284-7313 Bushing	(2) 228-5614 Bushing	(2) 228-5615 Bushing	(3) 228-5615 Bushing	(2) 228-5615 Bushing	(2) 357-5717 Bushing





Cat Filters Provide Longer Injector Life

Chances are, you don't skip oil changes or regular maintenance on the family car. So why skip planned maintenance on your Cat equipment? Cat fuel filters outperform the competition, with up to 45% longer injector life and up to 80% decreased cost per hour.*



Productivity and Hydraulics Go Hand In Hand

If your hydraulic system isn't performing at peak efficiency, it's robbing your machine of performance. Efficiency losses usually occur slowly! These losses can also increase your fuel consumption and operating costs.



Need help?

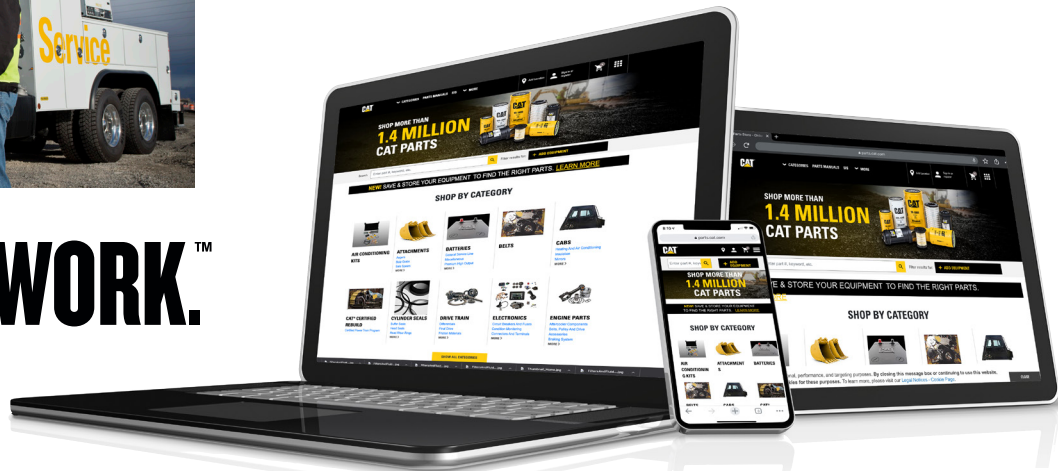
Your local Cat dealer can provide:

- Technical Support
- Customer Value Agreements
- Oil sample analysis
- Parts needed and equipment fit
- Repair financing
- Rental Services

Find your local dealer at www.cat.com today.



LET'S DO THE WORK.™



To buy Cat parts online, visit Parts.cat.com if you have a dealer account or MyParts.cat.com (continental US) if you don't yet have an account.

* Visit <https://www.cat.com/filtersandfluids> for more details

PEBJ0191 (APD, EAME, Russia, S. Am)

© 2021 Caterpillar. All Rights Reserved. CAT, CATERPILLAR, LET'S DO THE WORK, their respective logos, "Caterpillar Corporate Corporate Yellow", the "Power Edge" and Cat "Modern Hex" trade dress as well as corporate and product identity used herein, are trademarks of Caterpillar and may not be used without permission.

