

FM568 GF/FM568 LL

FOREST MACHINES



Engine Model
Net Power – ISO 9249
Engine Power – ISO 14396

Cat® C9.3B
257.9 kW (346 hp)
259 kW (347 hp)



FM568 GF/ FM568 LL

FOREST MACHINES

Are you having a hard time keeping operators? Is safety keeping you up at night? Do you just want a simple and reliable machine that will make your life in the woods more productive and enjoyable? The answer to all those questions is the Cat® FM568.



GENERAL FORESTRY



LOG LOADER

BOOST PRODUCTION UP TO 10%

Move heavy logs easily with more engine power, more swing power and more travel power. Engaging heavy lift mode automatically increases pressure when you need an additional boost for bigger timber.

IMPROVE FUEL EFFICIENCY UP TO 5%

The Cat C9.3B engine and electrohydraulic control system work in sync to help you move big timber without burning truckloads of fuel. Precise engine speed powering a large hydraulic pump gets you maximum production out of each fuel unit.

REDUCE MAINTENANCE COSTS UP TO 15%

Experience increased uptime and reduced costs with new longer-life fuel and hydraulic oil filters. Cat fuel filters have double the life of the previous filters, and the hydraulic oil return filter provides 50% more service life.

LATEST FEATURES



- Cab Monitor Improvements
 1. Continuously improved user interface allows intuitive navigation, minimizing performance interruption with the easy-to-use touchscreen menu.
 2. Identify apps quickly with a grid list view, abbreviated app names, and categorized menu options.
 3. A notification center keeps important information visible to the operator and displays messages without shrinking the camera view.
 4. Color-coded notifications set critical messages apart from the rest.
 5. Use the in-monitor QR code to learn about machine and technology features through a full suite of "how-to" videos.
- Enhance visibility to make service work easier and safer with optional inspection lighting.
- Standard integrated vehicle health management system alerts operators with service guidance and parts needed to enhance uptime.

Build Number: 07C



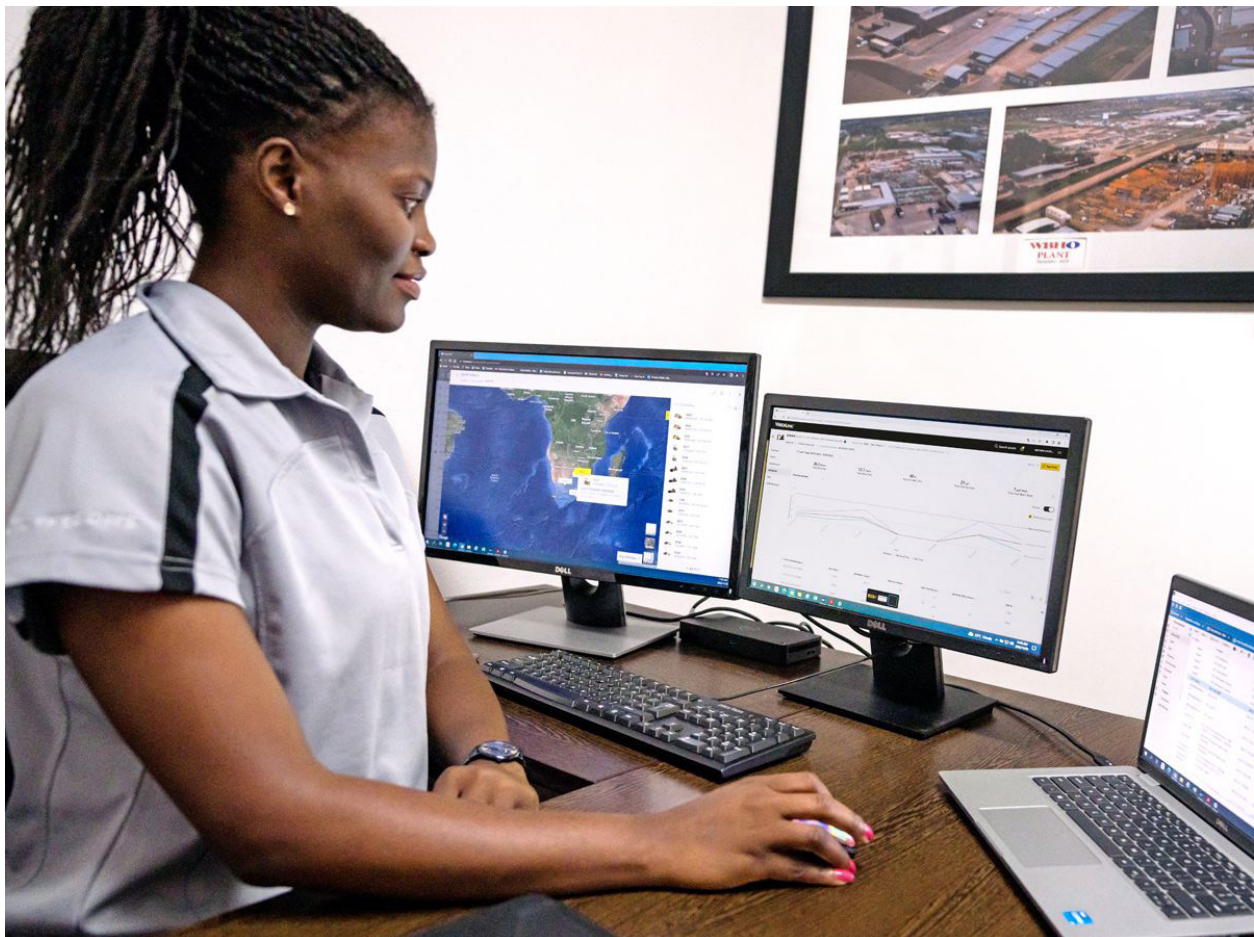
TAKE THE GUESSWORK OUT OF MANAGING YOUR EQUIPMENT

- VisionLink® provides actionable data insights for all assets – regardless of fleet size or equipment manufacturer. * Review equipment data from your desktop or mobile device to maximize uptime and optimize assets. Dashboards provide information such as hours, miles, location, idle time, and fuel utilization. Make informed decisions that lower costs, simplify maintenance, and improve safety and security on your jobsite.
- VisionLink Productivity gathers and summarizes machine telematics and jobsite data from all your equipment – regardless of the manufacture.* View actionable information such as idle time, fuel burn, location, payload, load counts, total cycles, and more to improve machine efficiency, productivity, and utilization. Access data anywhere via a mobile, tablet, or desktop device – on or off the jobsite.
- Cat® Inspect is a mobile application that allows you to easily perform digital preventative maintenance (PM) checks, inspections, and daily walkarounds. Inspections can easily be integrated with other Cat data systems like VisionLink so you can keep a close eye on your fleet.
- Remote Troubleshoot is a mobile application that allows your Cat dealer to perform diagnostic testing on your connected machine remotely to help resolve issues quickly and with less downtime.
- Remote Flash is a mobile application that allows you to update onboard software without a technician being present, allowing you to initiate software updates when convenient, increasing your overall operating efficiency.
- The Cat PL161 attachment locator allows you to track attachments across all worksites, reduce the number of lost attachments, and plan for attachment maintenance and replacement. The work tool recognition** feature automatically adjusts machine settings based on the selected tool.

**Data field availability can vary by equipment manufacturer.*

***Recognition feature available on select excavator models.*

Consult your Cat dealer for details.



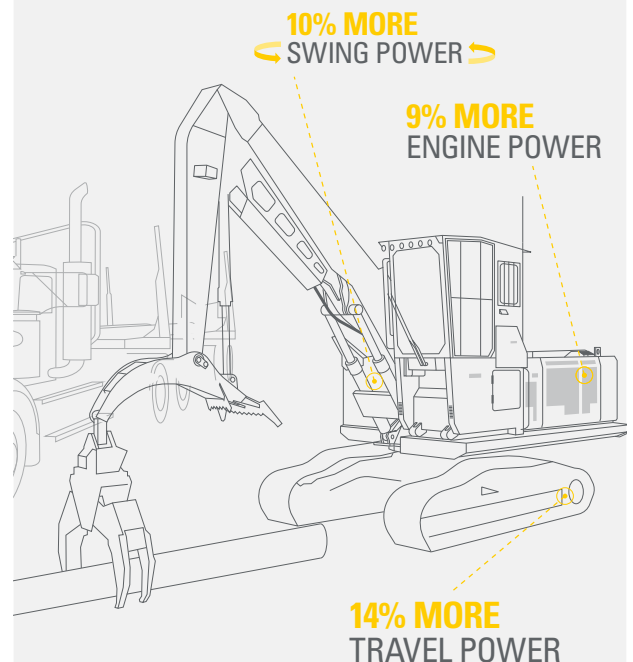
SUPERIOR PERFORMANCE



- The Cat C9.3B is up to 9% more powerful, is fuel efficient, and can run on biodiesel and other renewable fuels.
- Smart mode helps reduce fuel consumption by automatically matching engine and hydraulic power to working conditions.
- Pick and place logs with precision and power with the electrohydraulic control system.
- Heavy lift mode with up to 10% more swing torque* helps you confidently move big logs.
- Get to work faster with up to a 14% increase in travel speed*.
- Auxiliary hydraulic options let you use Cat grapples and various other attachments.
- Work in extreme environments with a standard high-ambient capability of 52° C (126° F) and cold start capability of -32° C (-25° F).

**Compared to 2020 568.*

GET MORE WORK DONE



UNMATCHED OPERATOR COMFORT

- Operators can choose the rear or side entry cab with up to 25% more space and a tilt-up console.*
- The dual HVAC system keeps operators comfortable in cold and warm weather.
- A wider heated and cooled air-suspension seat makes year-round work more pleasant.
- All controls are within easy reach to reduce twisting and turning and keep you focused on the work area.
- Cab risers – 165 mm (6.5") fixed or 1219 mm (48") hydraulic tilt – are available to meet your work needs.
- Special roof lining and window and door sealing reduce noise, making the interior as quiet as today's top work trucks.
- Stow your gear with in-cab storage beneath, behind the seat, and in the consoles.
- Use the standard radio's USB ports and Bluetooth® technology to connect personal devices and make hands-free calls.

**Compared to 2020 568.*



SIMPLE OPERATION



- Cat continues to improve user interface functionality for operators of all skill levels. The touchscreen monitor is an easy-to-use operating tool that presents the jobsite dashboard with an intuitive format.
- The Cat PL161 attachment locator is a Bluetooth device designed to let users know where their attachments are across all worksites, reduce the number of lost attachments, and plan for attachment maintenance and replacement. The PL161 integrates easily into VisionLink for full fleet management of machines and attachments from one smartphone or tablet dashboard to view location and tracking details.
- The keyless push-button engine start adds security by using operator ID codes to limit and track machine access. Codes can be entered manually or via an optional Bluetooth key fob.
- Navigate quickly on the standard high-resolution 254 mm (10 in) touchscreen monitor.
- Make moving the excavator much easier with optional Cat Stick Steer. Push a button and use one hand to travel and turn instead of both hands or feet on levers or pedals.
- Not sure how a function works or how to maintain the machine? Always have the operator's manual at your fingertips in the touchscreen monitor.
- Optional auxiliary relay powers on and turns off CB radios and other attachments without you taking your hands off the joysticks.



VERSATILE CONFIGURATIONS



General Forestry

1. The General Forestry model is ideal for road work, grappling, processing, and delimiting.
2. With a reach boom and quick coupler, you can equip the FM568 with a processor, bucket, thumb, mulcher, and other attachments to get work done quickly and efficiently.
3. A frontless option allows you to customize the machine to fit your applications.

Log Loader

1. The log loader configuration is ideal for truck loading, Butt-n-Top loading, power clam applications, and millyard work.
 2. An under-mounted heel cylinder provides maximum force for shovel logging with a Cat grapple. A variable displacement pump delivers high-flow rotating capability for heel and log grapples and Power Clam and Butt-n-Top grapples.
 3. An overmounted heel cylinder provides maximum clearance to load trucks and increases lift height for millyard applications.
- Rugged, reliable, simple-to-service Cat forestry grapples range in size from 1322 mm (52") to 1524 mm (60").



EASY MAINTENANCE

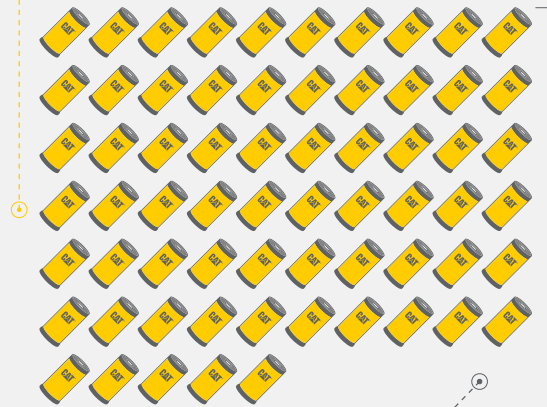
- Boost productivity with proactive service reminders. The Integrated Vehicle Health Management system alerts the operator with step-by-step service guidance and the parts needed so you don't experience unnecessary downtime.
- Expect up to 15% less maintenance cost than the previous model. (Savings calculated over 12,000 machine hours.)
- The engine's regeneration system functions automatically with no operator input or interruption to work.
- Using Cat genuine oil and filters and doing typical Scheduled Oil Sampling (S-O-SSM) monitoring will double the current service interval to 1,000 hours, giving you greater uptime to do more work.
- S-O-S ports simplify maintenance and allow for quick, easy extraction of fluid samples for analysis.
- The diesel particulate filter requires no maintenance.
- Replace fuel filters at 1,000 hours – twice the interval from the previous filters.
- The latest hydraulic oil filter provides improved filtration performance, anti-drain valves to keep oil clean when the filter is replaced, and longer life with a 3,000-hour replacement interval – 50% longer than previous filter designs.
- The high-efficiency cooling fan runs only when needed; program intervals so the fan automatically reverses to keep cores clean without interrupting your work.
- Standard Product LinkTM provides location, machine hours, fuel usage, productivity, idle time, diagnostic codes, and other machine data on demand through VisionLink online interface, helping you improve jobsite efficiency with lower operating costs.
- Remote Troubleshoot* connects you to a dealer service pro to help solve your problem and quickly get you to work.
- Remote Flash* works around your schedule to ensure your machine's software is up to date for optimal performance.

*Requires cell coverage.



SAVE MONEY

THE NEXT GENERATION 568 CONSUMES
UP TO 65 FEWER FILTERS*



FEWER FILTERS,
LONGER INTERVALS,
LESS COST,
MORE PRODUCTIVITY

*COMPARED TO PREVIOUS 568 OVER 12,000 HOURS

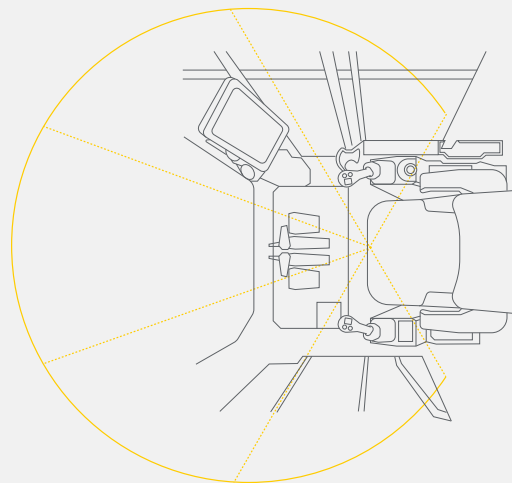


ENHANCED SAFETY



- The cab meets applicable industry standards for Rollover Protective Structure (ROPS)/Falling Object Protective Structure (FOPS)/Operator Protective Guards (OPG) and protects the operator inside the cab.
- Access most routine maintenance points at ground level.
- The right-hand service platform design provides easy, safe, and quick access to the upper service platform; the service platform steps use an anti-skid punch plate to prevent slipping. Handrails are provided for easy access.
- Larger 32 mm (1.25 in) polycarbonate front window, smaller cab pillars, and a flat engine hood improve visibility by up to 50%.
- Standard rearview camera enhances jobsite visibility; right-hand-sideview cameras are optional.
- The monitor's slope and grade indicator tell you the machine's position to help optimize its performance.
- A signaling/warning horn and travel alarm enhance jobsite safety.
- Make service work easier and safer with optional inspection lighting. With the flip of a switch, lights will illuminate the engine, pump, battery, and radiator compartments to enhance visibility.

50% GREATER VISIBILITY*



*CAT NEXT GENERATION 568 COMPARED TO PREVIOUS 568

SUSTAINABILITY

- The Cat C9.3B engine meets U.S. EPA Tier 4 Final and EU Stage V emission standards.
- Cat diesel engines are required to use ULSD (ultra-low sulfur diesel fuel with 15 ppm of sulfur or less) or ULSD blended with the following lower-carbon intensity fuels** up to: 20% biodiesel FAME (fatty acid methyl ester)* or 100% renewable diesel, HVO (hydrogenated vegetable oil) and GTL (gas-to-liquid) fuels. Refer to guidelines for successful application. Please consult your Cat dealer or “Caterpillar Machine Fluids Recommendations” (SEBU6250) for details.
- Auto Engine Speed Control reduces unnecessary fuel burn and greenhouse gas emissions by allowing the engine to automatically go into idle mode when the machine is not working.
- Extended maintenance intervals reduce downtime and decrease the amount of fluid and filters that are replaced over the machine's life.
- Cat VisionLink displays the CO₂ emissions for monitored assets, calculated by fuel type for the Runtime Fuel Burned each day in a selected date range.
- Remote Flash minimizes downtime and maintenance time while keeping your asset running at maximum efficiency. Alerts for machine updates are sent virtually from your Cat dealer, and updates can be deployed without a dealer technician needing to be onsite.
- Remote Troubleshoot decreases maintenance time and keeps your machine running with maximum efficiency by allowing your Cat dealer to virtually test the machine while working. Once a problem is identified, a technician can fix it the first time, saving time and money.

***Engines with no aftertreatment devices can use higher blends, up to 100% biodiesel (for use of blends higher than 20% biodiesel, consult your Cat dealer).**

****Tailpipe greenhouse gas emissions from lower-carbon intensity fuels are essentially the same as traditional fuels.**



INCREASE YOUR PRODUCTIVITY AND PROFIT

WITH CAT ATTACHMENTS

Easily expand the performance of your machine by utilizing any of the variety of Cat attachments. Each Cat attachment is designed to fit the weight and horsepower of the Cat machine for improved performance, safety, and stability.



GRAPPLES

Cat log loading grapples are made with high-strength steel for maximum performance. They are ideal for picking and sorting, bunching and loading, and shoveling applications. Bolt-on access panels make them easier to service.



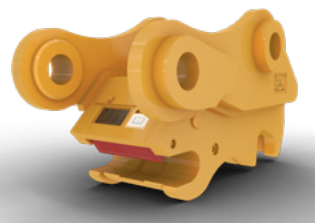
MULCHERS

Cat forestry mulchers make land clearing fast and safe. Staggered teeth quickly turn trees into mulch; a hydraulically controlled door lets the operator direct mulch flow to enhance jobsite safety.



BUCKETS

Cat buckets move material quickly and efficiently. Their unique design enables more efficient filling and better operator control, which improves overall productivity.



COUPLERS

Cat quick couplers allow you to change between tools in minutes, making the machine capable of doing a variety of money-making tasks.



ATTACHMENT TRACKING MADE EASY

The Cat PL161 Attachment Locator is a Bluetooth device that makes finding grapples, buckets, and other gear quick and easy. The excavator's onboard Bluetooth reader or Cat App on your phone will locate the device automatically.

TECHNICAL SPECIFICATIONS

Engine

| | | |
|--------------------------------|--|-------------|
| Engine Model | Cat C9.3B | |
| Net Power - ISO 9249 | 257.9 kW | 346 hp |
| Engine Power - ISO 14396 | 259 kW | 347 hp |
| Net Power - ISO 9249 (DIN) | 351 hp (metric) | |
| Engine Power - ISO 14396 (DIN) | 352 hp (metric) | |
| Bore | 115 mm | 4.53 in |
| Stroke | 149 mm | 5.87 in |
| Displacement | 9.3 r/min | 567.5 r/min |
| Biodiesel Capability | Up to B20 ¹ | |
| Emissions | Meets U.S. EPA Tier 4 Final and EU Stage V emission standards. | |

Net power advertised is the power available at the flywheel when the engine is equipped with fan, air intake system, exhaust system, and alternator with engine speed at 1,900 rpm. Advertised power is tested per the specified standard in effect at the time of manufacture.

¹Cat diesel engines are required to use ULSD (ultra-low sulfur diesel fuel with 15 ppm of sulfur or less) or ULSD blended with the following lower-carbon intensity fuels** up to: 20% biodiesel FAME (fatty acid methyl ester)* or 100% renewable diesel, HVO (hydrotreated vegetable oil) and GTL (gas-to-liquid) fuels. Refer to guidelines for successful application. Please consult your Cat dealer or "Caterpillar Machine Fluids Recommendations" (SEBU6250) for details.

*Engines with no aftertreatment devices can use higher blends, up to 100% biodiesel (for use of blends higher than 20% biodiesel, consult your Cat dealer).

**Tailpipe greenhouse gas emissions from lower-carbon intensity fuels are essentially the same as traditional fuels.

Drive

| | | |
|----------------------|----------|------------|
| Maximum Travel Speed | 4.3 km/h | 2.7 mile/h |
| Maximum Drawbar Pull | 378 kN | 84,978 lbf |

Hydraulic System

| | | |
|--|------------|-------------|
| Main System - Maximum Flow | 581 L/min | 153 gal/min |
| Maximum Pressure - Equipment | 35 000 kPa | 5,076 psi |
| Maximum Pressure - Equipment - Lift Mode | 38 000 kPa | 5,511 psi |
| Maximum Pressure - Travel | 35 000 kPa | 5,076 psi |
| Maximum Pressure - Swing | 28 400 kPa | 4,119 psi |

Swing Mechanism

| | | |
|----------------------|-----------|---------------|
| Swing Speed | 6.1 r/min | |
| Maximum Swing Torque | 163 kN·m | 120,222 lb/ft |

Weights

| | | |
|---|-----------|------------|
| Operating Weight – General Forestry | 48 500 kg | 106,920 lb |
| • High Wide undercarriage, Reach boom, R3.9 m (12'10") Reach stick, 700 mm (28") double grouser shoes, 1.64 m ³ (2.14 yd ³) HD bucket. | | |
| Operating Weight – Log Loader | 49 300 kg | 108,690 lb |
| • High Wide undercarriage, Log Loader boom, 4.73 m (15'6") Under/Under stick with live heel, 700 mm (28") double grouser shoes, no grapple. | | |

Air Conditioning System

The air conditioning system on this machine contains the fluorinated greenhouse gas refrigerant R134a (Global Warming Potential = 1430). The system on the 22'/48" Riser Cab contains 2.1 kg of refrigerant, which has a CO₂ equivalent of 3.003 metric tonnes. The system on the 72" Riser Cab contains 2.2 kg of refrigerant, which has a CO₂ equivalent of 3.146 metric tonnes.

Service Refill Capacities

| | | |
|-----------------------------------|--------|---------|
| Fuel Tank | 990 L | 262 gal |
| Cooling System | 20 L | 5 gal |
| Engine Oil | 32 L | 8 gal |
| Swing Drive | 10.5 L | 3 gal |
| Final Drive - Each | 9.5 L | 3 gal |
| Hydraulic System - Including Tank | 383 L | 101 gal |
| Hydraulic Tank | 185 L | 49 gal |
| Diesel Exhaust Fluid (DEF) Tank | 80 L | 21 gal |

Working Ranges

General Forestry

| | | |
|--|-----------|-------|
| Reach 6.5 m (21'4") boom, Reach 3.9 m (12'10") stick | | |
| Maximum Reach at Ground Level | 11 690 mm | 38'4" |

Log Loader

| | | |
|--|-----------|-------|
| Under/Under | | |
| Log Loader 7.09 m (23'3") boom, under/under 4.73 m (15'6") stick | | |
| Maximum Reach at Ground Level | 12 930 mm | 42'5" |

Over/Under

| | | |
|--|-----------|-------|
| Log Loader 7.09 m (23'3") boom, under/under 4.73 m (15'6") stick | 13 530 mm | 44'5" |
|--|-----------|-------|

Power Clam

| | | |
|--|-----------|-------|
| Log Loader 7.09 m (23'3") boom, under/under 4.73 m (15'6") stick | 11 670 mm | 38'3" |
|--|-----------|-------|

Dimensions

| | General Forestry | | Log Loader | |
|-------------------------------------|----------------------|-------|----------------------------|--------|
| Boom | Reach 6.5 m (21'4") | | LL 7.09 m (23'3") | |
| Stick | Reach 3.9 m (12'10") | | — | |
| Stick | — | | Under/Under 4.73 m (15'6") | |
| Stick | — | | Over/Under 4.73 m (15'6") | |
| Stick | — | | Power Clam 4.73 m (15'6") | |
| Shipping Height (cab tilted) | 4030 mm | 13'3" | 3490 mm | 11'5" |
| Handrail Height | 3510 mm | 11'6" | 3510 mm | 11'6" |
| Shipping Length | | | | |
| GF with attachment | 15 430 mm | 50'7" | — | |
| LL Under/Under – no attachment | — | | 16 930 mm | 55'7" |
| LL Over/Under – no attachment | — | | 17 370 mm | 57'0" |
| LL Power Clam – no attachment | — | | 15 530 mm | 50'11" |
| Tail Swing Radius | 3790 mm | 12'5" | 3790 mm | 12'5" |
| Counterweight Clearance | 1500 mm | 4'11" | 1500 mm | 4'11" |
| Ground Clearance | 760 mm | 2'6" | 760 mm | 2'6" |
| Track Length | 5490 mm | 18'0" | 5490 mm | 18'0" |
| Length to Center of Rollers | 4450 mm | 14'7" | 4450 mm | 14'7" |
| Track Gauge | 2920 mm | 9'7" | 2920 mm | 9'7" |
| Transport Width | | | | |
| 700 mm (28") shoes | 3650 mm | 12'0" | 3650 mm | 12'0" |

STANDARD & OPTIONAL EQUIPMENT

Standard and optional equipment may vary. Consult your Cat dealer for details.

| | Standard | Optional | | Standard | Optional |
|---|----------|----------|---|----------|----------|
| UNDERCARRIAGE AND STRUCTURES | | | CAB | | |
| High Wide undercarriage | ✓ | | ROPS Forestry cab with polycarbonate windows | ✓ | |
| Grease lubricated track with positive pin retention | ✓ | | 4-point harness seat belt | ✓ | |
| Catwalks | ✓ | | Heated and cooled seat with air-adjustable suspension | ✓ | |
| Tie down points | ✓ | | Integrated joysticks | ✓ | |
| Counterweight fuel tank | ✓ | | Tilt-up left-side console (side-entry cab only) | ✓ | |
| Heavy-duty track rollers | ✓ | | High-resolution touchscreen monitor | ✓ | |
| Heavy-duty travel motor guards | ✓ | | Bluetooth integrated radio (including USB, auxiliary port and microphone) | ✓ | |
| Heavy-duty bottom guards | ✓ | | 12V DC outlets | ✓ | |
| Track guiding guards | ✓ | | Keyless push-to-start engine control | ✓ | |
| High drawbar final drives | ✓ | | Automatic bi-level air conditioner | ✓ | |
| Heavy-duty recoil springs | ✓ | | LED dome and floor lights | ✓ | |
| Heavy-duty hydraulic swivel | ✓ | | Windshield wiper and washer | ✓ | |
| Heavy-duty hydraulic swivel guard | ✓ | | Behind seat storage | ✓ | |
| 700 mm (28") double and single grouser shoes | | ✓ | Retractable sunshade | ✓ | |
| 850 mm (33") triple grouser shoes | | ✓ | Rear entry | | ✓ |
| BOOMS AND STICKS | | | Side entry | | ✓ |
| 6.5 m (21'4") Reach boom - General Forestry | | ✓ | 559 mm (22") tilting riser | | ✓ |
| 7.09 m (23'3") Straight boom - Log Loader | | ✓ | 1219 mm (48") tilting riser | | ✓ |
| 3.9 m (12'10") Reach stick | | ✓ | 1829 mm (72") tilting riser | | ✓ |
| 4.73 m (15'6") Over/Under stick | | ✓ | CB radio mounts | | ✓ |
| 4.73 m (15'6") Power Clam stick | | ✓ | Cat Stick Steer | | ✓ |
| DB family bucket linkage | | ✓ | Auxiliary relay | | ✓ |
| ENGINE | | | CAT TECHNOLOGIES | | |
| Electric fuel priming pump | ✓ | | VisionLink | ✓ | |
| Three selectable modes: Power, Smart, Eco | ✓ | | Remote Services Capability | ✓ | |
| Automatic engine speed control | ✓ | | | | |
| Automatic engine idle shutdown | ✓ | | | | |
| Up to 4500 m (14,764 ft) altitude capability | ✓ | | | | |
| 52° C (126° F) high-ambient cooling capacity | ✓ | | | | |
| -32° C (-25° F) cold start capability | ✓ | | | | |
| Hydraulic reverse fan | ✓ | | | | |
| Two-stage fuel filter system | ✓ | | | | |
| Double element air filter with integrated pre-cleaner | ✓ | | | | |
| Cold start package with block heater and ether assist | | ✓ | | | |

STANDARD & OPTIONAL EQUIPMENT *(CONTINUED)*

Standard and optional equipment may vary. Consult your Cat dealer for details.

| | Standard | Optional | | Standard | Optional |
|--|----------|----------|--|----------|----------|
| ELECTRICAL SYSTEM | | | SAFETY AND SECURITY | | |
| Maintenance-free 1000 CCA batteries (x4) | ✓ | | Caterpillar One Key security system | ✓ | |
| Centralized electrical disconnect switch | ✓ | | Lockable service doors | ✓ | |
| LED chassis, boom (GF), stick (LL) and cab lights | ✓ | | Lockable external tool/storage box | ✓ | |
| 115 Amp. alternator | ✓ | | Lockable fuel caps and hydraulic tank | ✓ | |
| 24-volt electric starting | ✓ | | Service platforms with anti-skid plate and countersunk bolts | ✓ | |
| Horn and travel alarm | ✓ | | Right-hand handrail and handhold | ✓ | |
| Pre-start monitoring system | ✓ | | Signaling/warning horn | ✓ | |
| Tool control software | ✓ | | Travel alarm | ✓ | |
| Secondary engine shut off switch | ✓ | | Ground-level secondary engine shutoff switch | ✓ | |
| Premium lighting - General Forestry - 6 additional LED lights - 14 total | | ✓ | Rearview camera | ✓ | |
| Premium lighting - Log Loader - 10 additional LED lights - 18 total | | ✓ | Easy lock cab tilting system | | ✓ |
| SERVICE AND MAINTENANCE | | | SAFETY AND SECURITY | | |
| Integrated vehicle health management system | ✓ | | Cab riser light | | ✓ |
| Side-entry service platform | ✓ | | Inspection lighting | | ✓ |
| Left/Right-side fuel fill locations | ✓ | | Swing alarm | | ✓ |
| Grouped location for engine oil and fuel filters | ✓ | | Right-hand-sideview camera | | ✓ |
| S-O-S ports | ✓ | | | | |
| HYDRAULIC SYSTEM | | | | | |
| Boom and stick regeneration circuits | ✓ | | | | |
| Boom and stick drift reduction valve | ✓ | | | | |
| Electronic main control valve | ✓ | | | | |
| Automatic hydraulic oil warmup | ✓ | | | | |
| Automatic swing parking brake | ✓ | | | | |
| High performance hydraulic return filter | ✓ | | | | |
| Automatic two speed travel | ✓ | | | | |
| Bio hydraulic oil capability | ✓ | | | | |
| High torque swing drive | ✓ | | | | |
| Swing cushion valve | ✓ | | | | |
| Tool control software | ✓ | | | | |
| Medium pressure circuit | | ✓ | | | |

For more complete information on Cat products, dealer services and industry solutions, visit us on the web at www.cat.com.

© 2024 Caterpillar. All Rights Reserved.

VisionLink is a trademark of Caterpillar Inc., registered in the United States and in other countries.

Materials and specifications are subject to change without notice. Featured machines in photos may include additional equipment. See your Cat dealer for available options.

CAT, CATERPILLAR, LET'S DO THE WORK, their respective logos, SmartBoom, S·O·S, Product Link, "Caterpillar Corporate Yellow," the "Power Edge" and Cat "Modern Hex" trade dress as well as corporate and product identity used herein, are trademarks of Caterpillar and may not be used without permission.
www.cat.com www.caterpillar.com

AEXQ3343-02
Replaces AEXQ3343-01
Build Number: 07C
(Aus-NZ, N Am)

