



Cat[®] TL642

TELEHANDLER WITH STABILIZERS

Specifications

Engine

Model*	Cat [®] C3.6L	
Gross Power (Basic)	55 kW	73.7 hp

*Meets U.S. EPA Tier 4 Final emission standards.

Operating Specifications

Rated Load Capacity	2948 kg	6,500 lb
Maximum Lift Height	12.8 m	42 ft
Maximum Forward Reach	9.1 m	30 ft
Frame Leveling	10°	
Top Travel Speed	31 km/h	19 mph
Capacity at Max Height (o/r Down)	2949 kg	6,500 lb
Capacity at Max Reach (o/r Down)	771 kg	1,700 lb
Turning Radius over Tires	3.7 m	12 ft
Drawbar Pull – Loaded	92 kN	20,670 lbf
Operating Weight	10 400 kg	22,928 lb

Hydraulic System

Gear Pump	Single-section	
Auxiliary Hydraulic Pressure	240 bar	3,481 psi
Auxiliary Hydraulic Flow	68 L/min	18 gal/min

Service Refill Capacities

Fuel Tank	145 L	38.3 gal
Hydraulic System	158 L	42 gal

Axles and Brakes

- Trunnion mounted planetary 55-degree steer axles
- High bias limited slip differential on front axle
- Service Brakes: Inboard wet disc brakes on front and rear axles
- Parking Brakes: Wet disc, spring applied hydraulic release on front axle

Transmission Speeds

Forward/Reverse	4 Speeds/3 Speeds
-----------------	-------------------

Tires

Standard	370/75-28 Duraforce Air
Optional	370/75-28 Duraforce Foam Fill
	315/95-28 Telemaster Solid
	13.00-24 16PR Air
	13.00-24 12PR Foam
	370/75-28 Non-Marking Air
	370/75-28 Non-Marking Foam

Boom Performance

Boom Up/Boom Down	15.5 Seconds/10.7 Seconds
Tele In/Tele Out	11.8 Seconds/17.0 Seconds

Optional Work Tool Attachments

Hydraulic IT Coupler

Carriages

Standard Tilt	1270 mm	50 in
	1524 mm	60 in
	1829 mm	72 in
Side Tilt	1270 mm	50 in
	1829 mm	72 in
Side Shift	1270 mm	50 in
	1829 mm	72 in
Swing, 100°	1270 mm	50 in
	1829 mm	72 in
Dual Hydraulic Fork Positioner	1270 mm	50 in
	1829 mm	72 in

Forks

Pallet	1220 mm	48 in
	1525 mm	60 in
	1829 mm	72 in
Lumber	1525 mm	60 in
	1220 mm	48 in
Fork Extensions*	2286 mm	90 in

Buckets

General Purpose	1.0 m ³	1.3 yd ³
	1.5 m ³	2.0 yd ³
Multi Purpose	1.0 m ³	1.3 yd ³
	1.3 m ³	1.7 yd ³

Material Handling Arm

Truss Booms	Adjustable 2-4 m	Adjustable 6.7-13.2 ft
	3.7 m	12 ft
Truss with Winch	4.6 m	15 ft
	0.9 m	3 ft
	3.7 m	12 ft

Fork Mounted

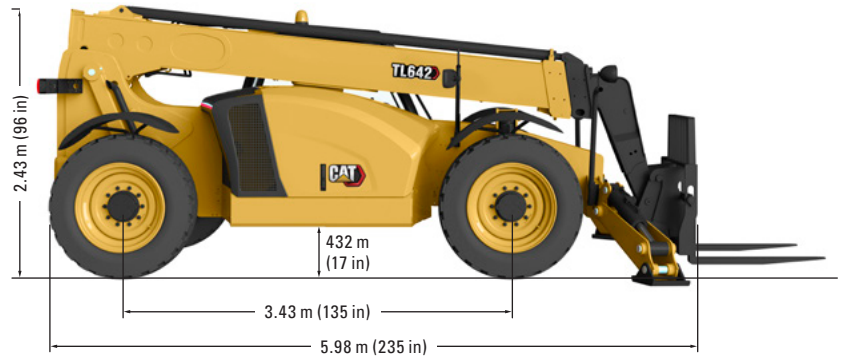
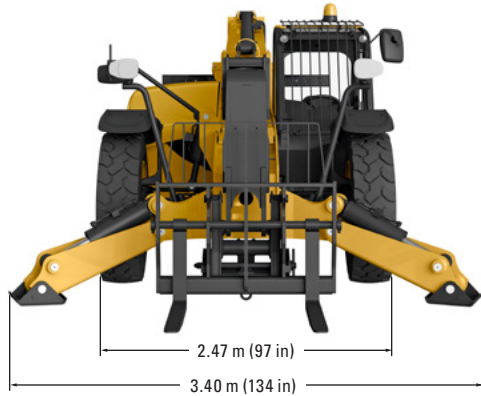
Work Platform	1220 mm × 2438 mm	4 ft × 8 ft
Truss Boom	Adjustable 2.1-3.6 m	Adjustable 7-12 ft
Lifting Hook		
Trash Hopper		

*For use with 1525 mm (60 in) forks or larger

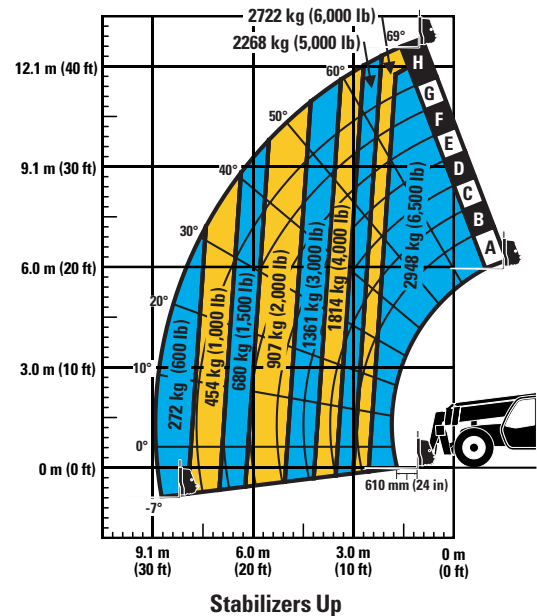
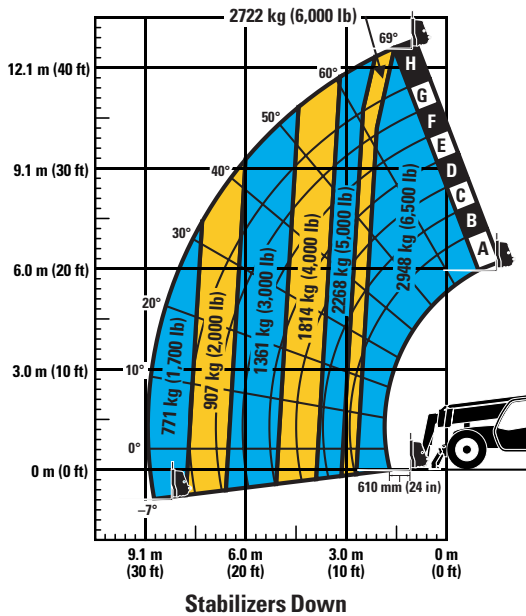


TL642 Telehandler with Stabilizers

Dimensions (All dimensions are approximate.)



Load Chart and Dimensions



IMPORTANT

Rated lift capacities shown are with machine equipped with carriage and pallet forks. The machine must be level on a firm surface with undamaged, properly inflated tires. Machine specifications and stability are based on rated lift capacities at specific boom angles and boom lengths. (If specifications are critical, the proposed application should be discussed with your dealer.)

DO NOT exceed rated lift capacity loads, as unstable and dangerous machine conditions will result.

DO NOT tip the machine forward to determine the allowable load.

Use only approved attachments with proper material handler model/ attachment load capacity charts displayed in the operator's cab.

Due to continuous product improvements, machine specifications and/or equipment changes may be made without prior notification. This machine meets or exceeds ANSI/ITSDF B56.6-2016 as originally manufactured for intended applications.

For more complete information on Cat products, dealer services, and industry solutions, visit us on the web at www.cat.com

© 2021 Caterpillar
All rights reserved

Materials and specifications are subject to change without notice. Featured machines in photos may include additional equipment. See your Cat dealer for available options.

CAT, CATERPILLAR, LET'S DO THE WORK, their respective logos, "Caterpillar Corporate Yellow," the "Power Edge" and Cat "Modern Hex" trade dress as well as corporate and product identity used herein, are trademarks of Caterpillar and may not be used without permission.

AEHQ8382 (08-2021)
Build Number: 642-05
(N Am)

