

# MH3026

## MATERIAL HANDLER



**Engine Power (ISO 14396)**  
**Maximum Operating Weight**

129 kW (174 hp)  
29 200 kg (64,375 lb)

Meets U.S. EPA Tier 4 Final and EU Stage V emission standards.



# THE NEW CAT<sup>®</sup> MH3026

MAXIMIZE YOUR PERFORMANCE

We know when it comes to material handling equipment, your success depends on productivity and low operating costs. The Cat<sup>®</sup> MH3026 Material Handler features simple-to-use technologies, a redesigned cab, and more options to match your work. Combine these features with up to 10% lower operating costs and longer machine reach, and you have a safe, quality, and reliable product that will provide you with the performance you need for your toughest material handling applications.



## NEXT GENERATION MATERIAL HANDLERS

The new line of Cat material handlers offers more choices than ever for your business.

- + LOWER OPERATING AND MAINTENANCE COSTS
- + INCREASED OPERATOR EFFICIENCY AND VISIBILITY
- + MORE IN-CAB COMFORT

Ready to help you make your business stronger, Cat next generation material handlers give you new ways to get the most work done at a cost that fits your business.



---

## SUPERIOR PERFORMANCE

Featuring more productivity, up to 13 m (42'8") machine reach, and greater swing torque, the MH3026 provides optimal performance and stability for your day-to-day operations.

---

## UP TO 10% LOWER OPERATING COSTS

Extended and synchronized service intervals and an electrically driven fan with an auto reverse function lower maintenance costs. The advanced electro-hydraulic system balances power and efficiency, reducing fuel consumption.

---

## MORE OPERATOR EFFICIENCY

Standard, easy-to-use technologies help make day-to-day tasks easy. A new, ergonomic cab featuring joystick steering and electro-hydraulic controls keeps operators comfortable all shift long.

## UP TO 10% LOWER OPERATING COSTS



---

**LESS MAINTENANCE,  
MORE PROFITABILITY**

---

NOTE: COMPARISON IS BASED ON THE PREVIOUS MODEL.

# STRONG. PRODUCTIVE. EFFICIENT. BUILT TO LAST

## FUEL SAVING PERFORMANCE

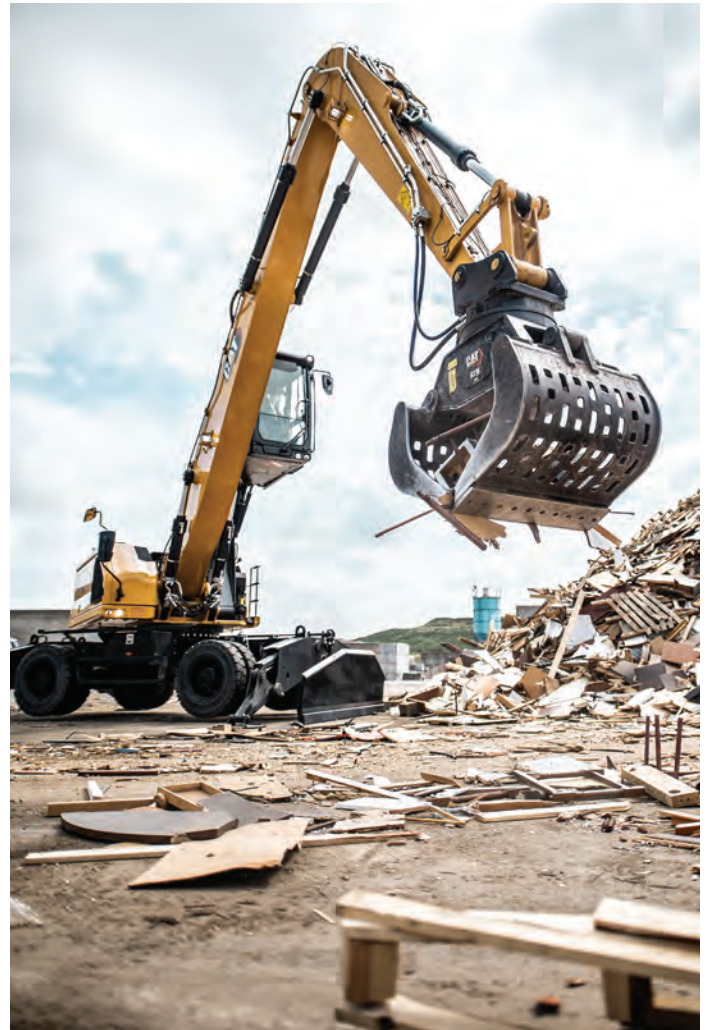
Use up to 10% less fuel than previous models. The MH3026 features a high-efficiency, electrically driven cooling fan that runs only when you need it. An advanced hydraulic system provides the optimum balance of power and efficiency while providing the control you need.

## STRENGTH WHERE IT MATTERS

Count on your machine to withstand wear throughout the years. Boom, sticks, and other high-stress areas are reinforced with thick multi-plate fabrications to ensure quality and reliability. The upper frame uses specially designed mountings to support the heavy-duty cab and the lower frame is reinforced to enhance component durability.

## RELIABLE IN ANY ENVIRONMENT

The MH3026 has a standard high-ambient temperature capability of 52°C (125°F) and a cold start capability of -18°C (0°F). The material handler can work up to 3000 m (9,840 ft) above sea level without derating. A standard auto reversing fan and optional vibrating grill allow you to work in dusty indoor environments.





**LOWER OPERATING COSTS  
UP TO 10%**

---

## **DO MORE. PAY LESS.**

With extended and more synchronized maintenance intervals, you get more done at a lower cost. Consolidated filter locations make service faster.

---

## **INFORMATION AT YOUR FINGERTIPS**

View operating information such as fuel levels and critical service alerts on the in-cab touchscreen monitor. Your machine's filter life and maintenance intervals are also trackable on the in-cab monitor.

---

## **NEW LONGER-LASTING FILTERS**

The new hydraulic oil filter provides improved filtration performance, with anti-drain valves to keep oil clean when the filter is replaced, and lasts up to 50% longer than previous filter designs.



# NEW CAB DESIGN

## MAKES HARD WORK EASY

Comfort and movement efficiency help keep you productive and alert all shift long. A tip-up left console lets you get in and out of the cab easily, and the seat is wide and adjustable for operators of virtually any size.

### OPTIONS TO FIT YOUR NEEDS

Choose between a deluxe or premium cab. Both options feature a 254 mm (10") LED touchscreen monitor. The deluxe cab features an air suspension, heated seat. The premium cab features an automatic suspension, heated, and ventilated seat.

### CUSTOMIZABLE JOYSTICKS

Joystick functions can be customized through the monitor. Joystick pattern as well as control response can be set to match operator preference. All preferences are saved with the operator ID.

Make operating easier with the touch of a joystick button. Additional auxiliary relays allow you to power on or turn off a CB radio, beacon light, and even a dust suppression watering system without taking your hands off the joysticks.

### KEYLESS PUSH TO START

The MH3026 uses a keyless push-button engine start. This adds security for the machine by using operator ID codes to limit and track machine access. Codes can be entered manually or via an optional Bluetooth® key fob or smartphone app.

### TOUCHSCREEN MONITOR

Most machine settings can be controlled through the high-resolution 254 mm (10") touchscreen monitor. It offers 42 languages and is easy to read from the seat.

## REDUCE OPERATOR FATIGUE

### ERGONOMIC LAYOUT

Controls are easy to reach, allowing you to operate comfortably with minimal twists and turns. Joystick steering is standard, allowing you to move the machine with minimal effort.

### REDUCED CAB VIBRATIONS

Work more comfortably with reduced cab vibrations from advanced viscous mounts.

### BLUETOOTH CONNECTION

Bluetooth-integrated radio allows for seamless mobile phone connection to listen to music and podcasts and for hands-free calling.

# DO MORE

VERSATILITY KEEPS YOU  
PRODUCTIVE AND PROFITABLE

Cat material handlers are designed and built for your demanding industry. These aggressive machines deliver fast, mobile, and efficient performance.



## POWER WHEN YOU NEED IT

Equip your machine with an optional 15 kW generator for magnet operation. Generator controls are fully integrated into the cab monitor.

## CAT PAYLOAD

Cat Payload helps you achieve precise load targets to improve your operating efficiency. Pick up a load of material – with a bucket and thumb combination or grapple and clamshell attachments and get a real-time weight estimate without swinging.

## CUSTOMIZABLE DESIGN

Match your machine to the job. The MH3026 offers four boom and stick combinations. The boom and stick options as well as two undercarriage configurations allow you to customize your machine to meet the demands of your application.



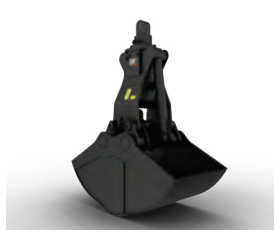
**GSH – ORANGE PEEL  
GRAPPLES**



**GSV – ORANGE PEEL  
GRAPPLES**



**DEMO AND SORTING  
GRAPPLES**



**CLAMSHELL GRAPPLES**



**MULTI-PROCESSORS**

## INCREASE YOUR PRODUCTIVITY AND PROFIT WITH CAT ATTACHMENTS

Easily expand the performance of your machine by using Cat attachments. Each Cat attachment is designed to fit the weight and horsepower of Cat material handlers for improved performance, safety, and stability. Complete attachment guides can be found in the technical specifications documents.

# SAFETY FEATURES

LOOK OUT FOR YOUR PEOPLE  
AND EQUIPMENT



## STANDARD 2D E-FENCE

Standard 2D E-Fence automatically stops machine motion using boundaries you set through the monitor for the entire working envelope – above, below, sides, and front. E-Fence protects equipment from damage. Automatic boundaries even help prevent operator fatigue by reducing overswinging.

## SECURE START

Use your PIN code on the monitor or the optional Bluetooth key fob to enable the push-button start feature.

## CAB AVOIDANCE

Like an invisible barrier around the tip over protective structure (TOPS)-certified cab, standard cab avoidance helps prevent your attachment from coming into contact with the cab.

## UPPER PLATFORM ACCESS

The service platform design provides easy, safe, and quick access to the upper platform. The steps use anti-skid punch plate to prevent slipping. The cab features a working-at-height tie-off provision for increased safety.

## SEE THE JOBSITE AROUND YOU

Enlarged windows and improved machine layout increase visibility from the seat of the cab. Standard rearview and right-side-view cameras always keep operators aware of their surroundings. An optional 360° visibility feature is also available. Powerful, long-lasting LED lights consume minimal power, keeping you safe while working in the dark. Choose between a fixed, one-piece, laminated P5A or P8B glass windshield to protect you from debris falling toward the cab. The standard cab helps block outside noise.

# CAT LINK TECHNOLOGY

## TAKES THE GUESSWORK OUT OF MANAGING YOUR EQUIPMENT

---

Cat Link telematics technology helps take the complexity out of managing your jobsites by gathering data generated by your equipment, materials, and people and serving it up to you in customizable formats.



### **PRODUCT LINK™**

Product Link™ collects data automatically and accurately from your assets – any type and any brand. Information such as location, hours, fuel usage, productivity, idle time, maintenance alerts, diagnostic codes, and machine health can be viewed online through web and mobile applications.



### **VISIONLINK®**

Access information anytime, anywhere with VisionLink®. Use it to make informed decisions that boost productivity, lower costs, simplify maintenance, and improve safety and security on your jobsite. With different subscription level options, your Cat dealer can help you configure exactly what you need to connect your fleet and manage your business without paying for extras you don't want. Subscriptions are available with cellular or satellite reporting (or both).



### **REMOTE SERVICES**

Remote Services is a suite of technologies that improve your jobsite efficiency.

- + **Remote troubleshoot** allows your Cat dealer to perform diagnostic testing on your connected machine remotely, pinpointing potential issues while the machine is in operation. Remote troubleshoot helps ensure the technician arrives with the correct parts and tools the first time, eliminating additional trips to save you time and money.
- + **Remote flash** updates on-board software without a technician being present, potentially reducing update time by as much as 50%.
- + The **Cat app** helps you manage your assets – at any time – right from your smartphone. You can see your fleet location, hours, and other information. You will get critical alerts for required maintenance, and you can even request service from your local Cat dealer.

# TECHNICAL SPECIFICATIONS

See [cat.com](http://cat.com) for complete specifications.

ENGINE		
Engine Model	Cat® C7.1	
Engine Power (ISO 14396:2002)	129 kW	174 hp
Net Power (ISO 9249:2007)	128 kW	171 hp
Bore	105 mm	4 in
Stroke	135 mm	5 in
Displacement	7.01 L	427.8 in <sup>3</sup>

- The net power advertised is the power available at the flywheel when the engine is equipped with alternator, air cleaner, aftertreatment, and fan at minimum speed.
- The Cat C7.1 meets U.S. EPA Tier 4 Final and EU Stage V emission standards.

TRANSMISSION		
Maximum Travel Speed (with steering wheel)	20 km/h	12.4 mph
Maximum Travel Speed (with joysticks)	15 km/h	9.3 mph
Drawbar Pull	127 kN	28,550 lbf
Maximum Gradeability (at 27 500 kg/60,600 lb)	52%	

HYDRAULIC SYSTEM		
Main System – Maximum Flow – Implements	360 L/min	95 gal/min
Maximum Pressure – Implements	37 000 kPa	5,366 psi
Maximum Pressure – Travel	35 000 kPa	5,076 psi
Maximum Pressure – Swing	39 000 kPa	5,656 psi

WEIGHTS		
Minimum Operating Weight	26 400 kg	58,202 lb
Maximum Operating Weight	29 200 kg	64,375 lb

- Operating weight includes full fuel tank, operator, 1400 kg (3,086 lb) work tool. Weight varies depending on configuration.

SERVICE REFILL CAPACITIES		
Fuel Tank	416 L	109.9 gal
Diesel Exhaust Fluid (DEF) Tank	30 L	7.9 gal
Cooling System	40 L	10.6 gal
Engine Oil	20 L	5.3 gal
Hydraulic Tank	209 L	55.2 gal
Hydraulic System (including tank)	345 L	91.1 gal
Rear Axle (differential)	14 L	3.7 gal
Steering Axle (differential)	11 L	2.9 gal
Final Drive (each)	2.5 L	0.7 gal
Powershift Transmission	2.5 L	0.7 gal

SWING MECHANISM		
Swing Speed	8.6 rpm	
Maximum Swing Torque	70 kN•m	51,800 lb•ft

DIMENSIONS		
<b>Boom</b>	<b>MH Boom 7.5 m (24'7")</b>	
<b>Stick</b>	<b>Drop Nose 6.0 m (19'8")</b>	
Shipping Height with falling objects guards (FOGS)	3375 mm	11'1"
Shipping Length	10 700 mm	35'1"
Shipping Length (with push blade)	11 190 mm	36'9"
Machine Length	5450 mm	17'11"
Machine Length (with push blade)	6115 mm	20'1"
Tail Swing Radius	2800 mm	9'2"
Counterweight Clearance	1305 mm	4'3"
Cab Height – Lowered	3350 mm	11'0"
Cab Height – Lowered with FOGS	3375 mm	11'1"
Cab Height – Raised	5750 mm	18'10"
Cab Height – Raised with FOGS	5775 mm	18'11"
Wheel Base	2750 mm	9'0"
Shipping Width	2990 mm	9'10"
Ground Clearance	320 mm	1'1"
Undercarriage Length	5300 mm	17'5"
Undercarriage Length (with push blade)	5970 mm	19'7"
Upper Frame Width (including handrails)	2740 mm	9'0"

WORKING RANGES		
<b>Boom</b>	<b>MH Boom 7.5 m (24'7")</b>	
<b>Stick</b>	<b>Drop Nose 6.0 m (19'8")</b>	
Maximum Height	14 270 mm	46'10"
Minimum Dump Height	3810 mm	12'6"
Maximum Reach	13 000 mm	42'8"
Maximum Reach at Ground Line	12 850 mm	42'2"
Maximum Depth	2970 mm	9'9"
Boom Pin Height	9300 mm	30'6"

AIR CONDITIONING SYSTEM	
The air conditioning system on this machine contains the fluorinated greenhouse gas refrigerant R134a (Global Warming Potential = 1430). The system contains 1.05 kg of refrigerant which has a CO <sub>2</sub> equivalent of 1.502 metric tonnes.	

# STANDARD & OPTIONAL EQUIPMENT

Standard and optional equipment may vary. Consult your Cat dealer for details.

BOOMS AND STICKS	STANDARD	OPTIONAL
6.9 m (22'8") Straight MH boom		•
7.5 m (24'7") Straight MH boom		•
5.0 m (16'5") Straight MH stick		•
5.5 m (18'1") Drop Nose MH stick		•
6.0 m (19'8") Drop Nose MH stick		•
CAB	STANDARD	OPTIONAL
Advanced sound-suppressed TOPS cab	•	
Deluxe cab: air suspension heated seat		•
Premium cab: air suspension heated and ventilated seat		•
10" touchscreen monitor	•	
Keyless push-to-start engine control	•	
Auxiliary relay		•
Tilt-up left-side console	•	
Fixed one-piece laminated windshield and roof window (P5A glass)		•
Fixed two-piece laminated windshield and roof window (P8B glass)		•
LED dome lights	•	
CAT TECHNOLOGY	STANDARD	OPTIONAL
Cat® Product Link™	•	
Cat Payload	•	
2D E-fence and cab avoidance	•	
ELECTRICAL SYSTEM	STANDARD	OPTIONAL
Roading and indicator lights at front and rear	•	
Maintenance-free batteries	•	
LED chassis light, left-hand/right-hand boom and stick lights, cab lights – 1800 lumens	•	
Centralized electrical disconnect switch	•	
Programmable time delay LED working lights	•	
Electrical refueling pumps		•
SERVICE AND MAINTENANCE	STANDARD	OPTIONAL
Automatic lubrication system for implement and swing system	•	
S•O•S <sup>SM</sup> sampling ports	•	

ENGINE	STANDARD	OPTIONAL
Cat C7.1 single turbo diesel engine	•	
One-touch low idle with automatic engine speed control	•	
Automatic engine shutdown	•	
52°C (125°F) high-ambient capability	•	
-18°C (0°F) cold start capability	•	
Electric fuel priming pump	•	
Double element air filter with integrated precleaner	•	
On-demand electric cooling fans with auto-reverse function	•	
Vibrating radiator screen		•
HYDRAULIC SYSTEM	STANDARD	OPTIONAL
Electronic main control valve	•	
Automatic hydraulic oil warm up	•	
Automatic swing brake	•	
Separate dedicated swing pump	•	
Boom and stick lowering check valves	•	
Medium pressure auxiliary circuit	•	
Element type main hydraulic filter	•	
SmartStick and SmartBoom™	•	
Heavy lift mode	•	
Cat BIO HYDO™ Advanced biodegradable hydraulic oil		•
Joystick steering	•	
Pattern changer	•	
SAFETY AND SECURITY	STANDARD	OPTIONAL
Rear- and right-side-view cameras	•	
360° visibility		•
Travel alarm		•
Secondary engine shutoff switch	•	
UNDERCARRIAGE AND STRUCTURES	STANDARD	OPTIONAL
2.99 m (9'10") wide undercarriage		•
2.99 m (9'10") wide undercarriage with push blade		•
5700 kg (12,550 lb) counterweight	•	
10.00-20 dual solid rubber tires		•
11.00-20 16 dual pneumatic tires		•
All-wheel drive	•	
Automatic brake/axle lock	•	
Creeper speed	•	
Heavy-duty axles, advanced disc brake system, and travel motor with adjustable braking force	•	
Lockable, oscillating front axle with remote greasing point	•	

**Not all features are available in all regions. Please check with your local Cat dealer for specific offering availability in your area.**

For additional information, refer to the Technical Specifications brochures available at [www.cat.com](http://www.cat.com) or your Cat dealer.

For more complete information on Cat products, dealer services and industry solutions, visit us on the web at [www.cat.com](http://www.cat.com).

VisionLink is a trademark of Caterpillar Inc., registered in the United States and in other countries.

Materials and specifications are subject to change without notice. Featured machines in photos may include additional equipment. See your Cat dealer for available options.

© 2022 Caterpillar. All Rights Reserved. CAT, CATERPILLAR, LET'S DO THE WORK, their respective logos, S•O•S, SmartBoom, HYDO, Product Link, "Caterpillar Corporate Yellow", the "Power Edge" and Cat "Modern Hex" trade dress as well as corporate and product identity used herein, are trademarks of Caterpillar and may not be used without permission.

[www.cat.com](http://www.cat.com) [www.caterpillar.com](http://www.caterpillar.com)

AEXQ3296-01  
Replaces AEXQ3296-00  
Build Number: 07C  
(Europe, N Am, Turkey)

