



# Cat® TL642

## TELEHANDLER

### Specifications

#### Engine

Model	Cat® C4.4 ACERT™	
Gross Power (Basic)	75 kW	100 hp

#### Weights

Operating Weight	9840 kg	21,693 lb
------------------	---------	-----------

#### Operating Specifications

Rated Load Capacity	2948 kg	6,500 lb
Maximum Lift Height	12.8 m	42 ft
Maximum Forward Reach	9.1 m	30 ft
Frame Leveling	10°	
Top Travel Speed	32 km/h	20 mph
Capacity at Max Height	2722 kg	6,000 lb
Capacity at Max Reach	318 kg	700 lb
Turning Radius over Tires	3.7 m	12 ft
Drawbar Pull (Loaded)	88 kN	19,783 lbf

#### Hydraulic System

Gear Pump	Single-section	
System Operating Pressure	260 bar	3,770 psi
Auxiliary Hydraulic Pressure	240 bar	3,481 psi
Auxiliary Hydraulic Flow	68 L/min	18 gal/min

- Auxiliary Hydraulic Circuit used for all attachments equipped with cylinders or other hydraulic components.

#### Service Refill Capacities

Fuel Tank	145 L	38.3 gal
Hydraulic System	151.5 L	40 gal

#### Tires

Standard	370/75-28 Duraforce Air	
Optional	370/75-28 Duraforce Foam Fill 315/95-28 Telemaster Solid 13.00-24 16PR Air 13.00-24 12PR Foam 370/75-28 Non-Marking Air 370/75-28 Non-Marking Foam	

#### Transmission Speeds

Forward	4 speed
Reverse	3 speed

#### Boom Performance

Boom Up	15.5 Seconds
Boom Down	10.7 Seconds
Tele In	11.8 Seconds
Tele Out	17 Seconds

#### Axles

- Trunnion mounted planetary 55 degree steer axles.
- High bias limited slip differential on front axle.

#### Brakes

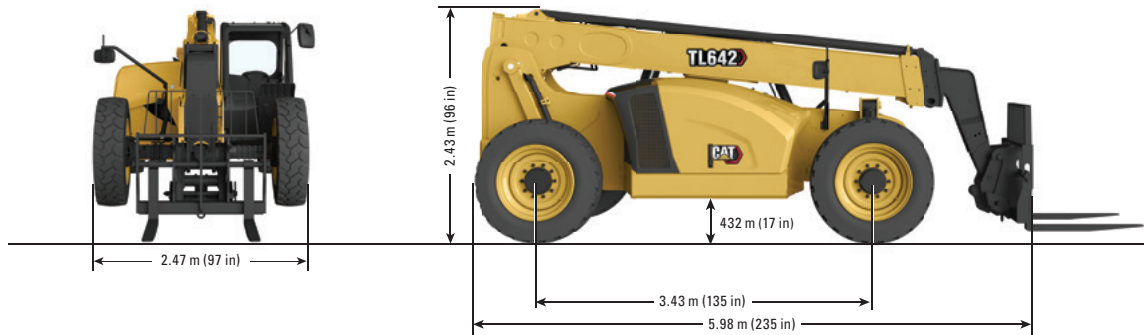
- Service Brakes are inboard wet disc brakes on front and rear axles.
- Parking Brakes are wet disc, spring applied hydraulic release on front axle.

#### Work Tools

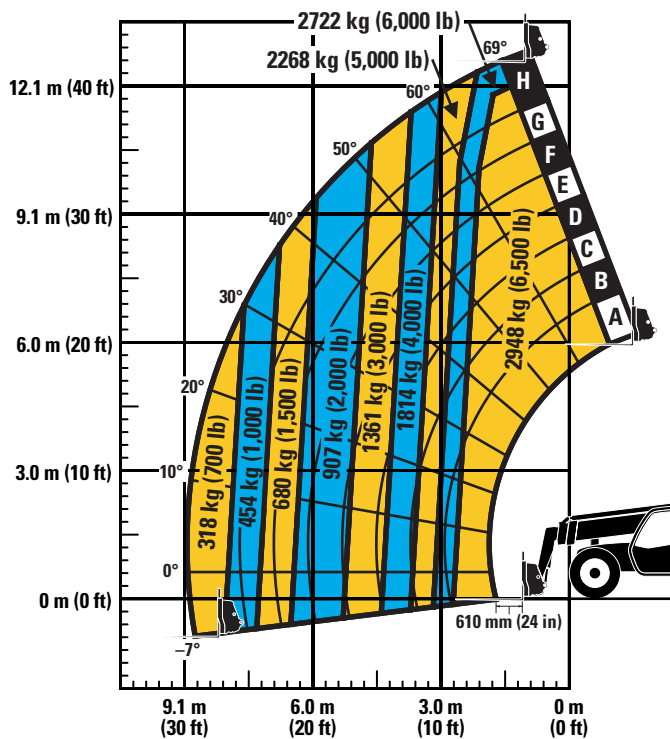
	Includes	Includes
Hydraulic IT Coupler	Auxiliary Electrics	Auxiliary Electrics
Pallet Forks	(2) 1220 mm, 60 mm × 125 mm (2) 1220 mm, 60 mm × 100 mm (2) 1525 mm, 60 mm × 150 mm	(2) 48 in, 2.36 in × 5 in (2) 48 in, 2.36 in × 4 in (2) 60 in, 2.36 in × 6 in
Lumber Forks	(2) 1525 mm, 45 mm × 180 mm (2) 1829 mm, 50 mm × 150 mm	(2) 60 in, 1.75 in × 7 in (2) 72 in, 2 in × 6 in
Cubing Forks	(2) 1220 mm, 50 mm × 50 mm	(2) 48 in, 2 in × 2 in
Carriages:		
Standard Tilt	1270 mm	50 in
Wide Tilt	1829 mm	72 in
Side Shift	1220 mm	48 in
Standard Rotate	1270 mm	50 in
Wide Rotate	1829 mm	72 in
Swing	100°, 1829 mm, 2948 kg Capacity, 2268 kg Swung	100°, 72 in, 6,500 lb Capacity, 5,000 lb Swung
Dual Fork Positioning	1270 mm	50 in

# TL642 Telehandler

## Dimensions (All dimensions are approximate.)



## Load Chart and Dimensions



### IMPORTANT

Rated lift capacities shown are with machine equipped with carriage and pallet forks. The machine must be level on a firm surface with undamaged, properly inflated tires. Machine specifications and stability are based on rated lift capacities at specific boom angles and boom lengths. (If specifications are critical, the proposed application should be discussed with your dealer.)

DO NOT exceed rated lift capacity loads, as unstable and dangerous machine conditions will result.

DO NOT tip the machine forward to determine the allowable load.

Use only approved attachments with proper material handler model/attachment load capacity charts displayed in the operator's cab.

Due to continuous product improvements, machine specifications and/or equipment changes may be made without prior notification. This machine meets or exceeds ANSI/ITSDF B56.6-2016 as originally manufactured for intended applications.

For more complete information on Cat products, dealer services, and industry solutions, visit us on the web at [www.cat.com](http://www.cat.com)

© 2021 Caterpillar  
All rights reserved

Materials and specifications are subject to change without notice. Featured machines in photos may include additional equipment. See your Cat dealer for available options.

CAT, CATERPILLAR, LET'S DO THE WORK, their respective logos, "Caterpillar Corporate Yellow," the "Power Edge" and Cat "Modern Hex" trade dress as well as corporate and product identity used herein, are trademarks of Caterpillar and may not be used without permission.

AEHQ8374 (08-2021)  
Build Number: 642-05  
(S Am)

