



# D8 GC

## Track-Type Tractor

# Technical Specifications

Configurations and features may vary by region. Please consult your Cat® dealer for availability in your area.

## Table of Contents

### D8 GC Track-Type Tractor

<b>Specifications</b> .....	<b>2</b>	D8 GC .....	4
Engine .....	2	Blades .....	4
Service Refill Capacities .....	2	D8 GC Features .....	5
Hydraulic Controls .....	2	Track Shoes .....	6
Transmission .....	2	Rippers .....	6
Standards .....	3	<b>Standard and Optional Equipment</b> .....	<b>7</b>

### D8 GC Desert/High Abrasion Specialty Configuration

<b>Key Features and Benefits</b> .....	<b>10</b>	D8 GC Desert/High Abrasion .....	13
<b>Specifications</b> .....	<b>11</b>	Blades .....	13
Engine .....	11	D8 GC Desert/High Abrasion Features .....	14
Service Refill Capacities .....	11	Track Shoes .....	15
Hydraulic Controls .....	11	Rippers .....	15
Transmission .....	11	<b>Standard and Optional Equipment</b> .....	<b>16</b>
Standards .....	12		

# D8 GC Track-Type Tractor Specifications

## Engine

Engine Model	Cat® 3406C DITA	
Emissions	Noncertified	
Build Number	18A	
Engine Power (maximum)		
SAE J1995	252 kW	338 hp
ISO 14396	247 kW	331 hp
ISO 14396 (DIN)	335 mhp	
Net Power (2,100 rpm)		
ISO 9249/SAE J1349	226 kW	303 hp
ISO 9249 (DIN)	307 mhp	
80/1269/EEC	226 kW	303 hp
Net Power (maximum)		
ISO 9249/SAE J1349	239 kW	320 hp
ISO 9249/SAE J1349 (DIN)	325 mhp	
80/1269/EEC	239 kW	320 hp
Bore	137 mm	5.4 in
Stroke	165 mm	6.5 in
Displacement	14.6 L	893 in <sup>3</sup>
Biodiesel Capability	Up to B100 <sup>1</sup>	

- Net power advertised is the power available at the flywheel when engine is equipped with a fan at maximum speed, air cleaner, muffler and alternator.
- Advertised power is tested per the specified standard in effect at the time of manufacture.

- No deratings required up to 3800 m (12,500 ft) altitude.

<sup>1</sup> Cat engines are compatible with the following renewable, alternative, and bio-fuels\* with lower greenhouse gas emission impact:

✓Up to B20 biodiesel (FAME)\*\*

✓Up to 100% HVO and GTL renewable fuels

\*Refer to guidelines for successful application. Please consult your Cat dealer or “Caterpillar Machine Fluids Recommendations” (SEBU6250) for details.

\*\*Up to B100 capable when equipped with optional B100-compliant fuel lines. Please consult the Operations and Maintenance Manual (OMM) for further information.

## Service Refill Capacities

Fuel Tank	625 L	165 gal
Cooling System	92 L	24.3 gal
Engine Crankcase	32.5 L	8.6 gal
Power Train	144 L	38 gal
Final Drives (each)	13.5 L	3.6 gal
Pivot Shaft	40 L	2.6 gal
Hydraulic Tank	72 L	19 gal

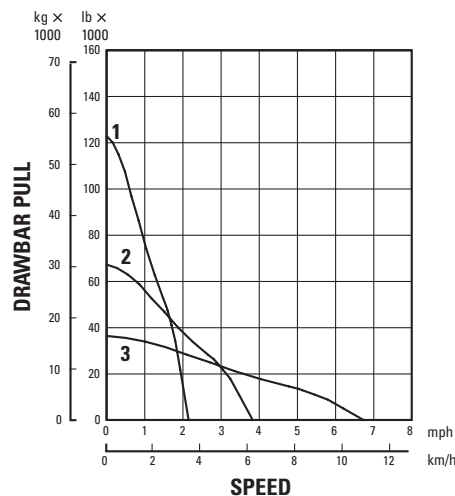
## Hydraulic Controls

Pump Type – Implements	Variable Displacement Piston	
Pump Capacity	7000 kPa	1,015 psi
RPM at Rated Engine Speed	2,100 rpm	
Pump Output	239 L/min	63.1 gal/min
Lift Cylinder Flow	325 L/min	85.9 gal/min
Tilt Cylinder Flow	170 L/min	44.9 gal/min
Ripper Cylinder Flow	190 L/min	50.2 gal/min
Main Relief Valve		
Pressure Setting	24 100 kPa	3,500 psi
Maximum Operating Pressure		
Bulldozer, Lift	24 100 kPa	3,500 psi
Bulldozer, Tilt	24 100 kPa	3,500 psi
Ripper, Lift	24 100 kPa	3,500 psi
Ripper, Tilt	24 100 kPa	3,500 psi
Steering	38 000 kPa	5,511 psi

## Transmission

1.0 Forward	3.5 km/h	2.2 mph
2.0 Forward	6.2 km/h	3.9 mph
3.0 Forward	10.8 km/h	6.7 mph
1.0 Reverse	4.7 km/h	2.9 mph
2.0 Reverse	8.1 km/h	5.0 mph
3.0 Reverse	13.9 km/h	8.6 mph

## D8 GC



### KEY

- 1 – 1st Gear
- 2 – 2nd Gear
- 3 – 3rd Gear

**NOTE:** Usable pull will depend upon weight and traction of equipped tractor.

# D8 GC Track-Type Tractor Specifications

## Standards

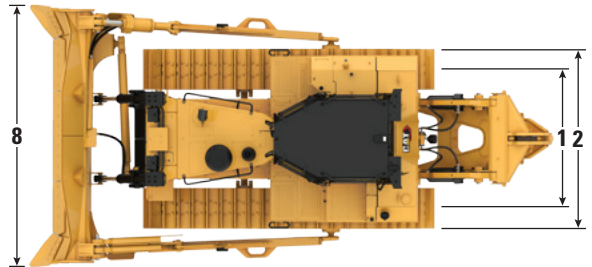
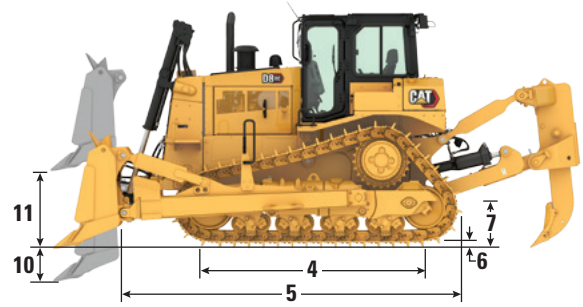
ROPS/FOPS	Integrated Rollover Protective Structure (ROPS) offered by Caterpillar for the machine meets ROPS criteria ISO 3471:2008 Falling Object Protective Structure (FOPS) meets ISO 3449:2005 Level II
Brakes	Brakes meet the standard ISO 10265:2008
Sound Level Information; including Machines in Eurasian Economic Union Countries	The declared dynamic operator sound pressure level is 80 dB(A) when “ISO 6396:2008” is used to measure the value for an enclosed cab. The cab was properly installed and maintained. The measurement was conducted with the cab doors and the cab windows closed. Hearing protection may be needed when the machine is operated with an open operator station for extended periods, in a noisy environment, or with a cab that is not properly maintained. The declared exterior sound power level is 116 dB(A) when the value is measured according to the dynamic test procedures and the conditions that are specified in “ISO 6395:2008.” The declared sound levels listed above include both measurement uncertainty and uncertainty due to production variation.

# D8 GC Track-Type Tractor Specifications

## D8 GC

Operating Weight	37 557 kg	82,800 lb
Shipping Weight	32 803 kg	72,318 lb
Ground Pressure (ISO 16754)	85.3 kPa	12.4 psi
Track Shoe Type	Extreme Service	
Width of Standard Track Shoe	610 mm	24 in
Shoes/Side	44	
Track Rollers per Side	8	
Ground Contact Area (ISO 16754)	3.91 m <sup>2</sup>	6,060 in <sup>2</sup>
<b>1</b> Track Gauge	2083 mm	82 in
<b>2</b> Width of Tractor (without trunnions)	2693 mm	106 in
<b>3</b> Machine Height from Tip of Grouser to Exhaust Stack	3543 mm	139.4 in
Top of Cab	3498 mm	137.7 in
Lights Mounted at top of Cylinder	3527 mm	138.8 in
<b>4</b> Length of Track on Ground	3206 mm	126.2 in
<b>5</b> Length of Basic Tractor (tag link trunnion to tip of rear grouser)	4625 mm	182 in
With the following attachments add:		
Single Shank Ripper (with tip at ground line)	1519 mm	59.8 mm
Multi-Shank Ripper (with tip at ground line)	1613 mm	63.5 mm
Drawbar	406 mm	16.0 in
SU Blade	1844 mm	72.6 in
Pitch	216 mm	8.5 in
<b>6</b> Grouser Height	84 mm	3.3 in
<b>7</b> Ground Clearance	622 mm	24.4 in

- Operating Weight – Includes hydraulic controls, tilt cylinder, coolant, lubricants, 100% fuel, ROPS/FOPS cab, SU-Blade, Single-Shank Ripper, 610 mm (24 in) Extreme Service shoes, and operator.
- Shipping Weight – Includes coolant, lubricants, 20% fuel, ROPS, FOPS cab, Single-Shank Ripper and 610 mm (24 in) Extreme Service shoes.



## Blades

	Semi-Universal (SU)		Semi-Universal (SU) with Rock Guard/Wear Plate	
	Capacity		Capacity	
Capacity	8.7 m <sup>3</sup>	11.4 yd <sup>3</sup>	8.7 m <sup>3</sup>	11.4 yd <sup>3</sup>
Width (includes blade tilt cylinder)	3812 mm	12.5 ft	3812 mm	12.5 ft
<b>8</b> Width over End Bits	3940 mm	12.9 ft	3940 mm	12.9 ft
<b>9</b> Height	1690 mm	5.5 ft	1960 mm	6.4 ft
<b>10</b> Dig Depth	582 mm	22.9 in	582 mm	22.9 in
<b>11</b> Lift Height	1231 mm	48 in	1231 mm	48 in
<b>12</b> Maximum Tilt	951 mm	36 in	951 mm	36 in
Blade Weight (without hydraulic controls)	4254 kg	9,378 lb	4754 kg	10,480 lb

# D8 GC Track-Type Tractor Specifications

## D8 GC Features

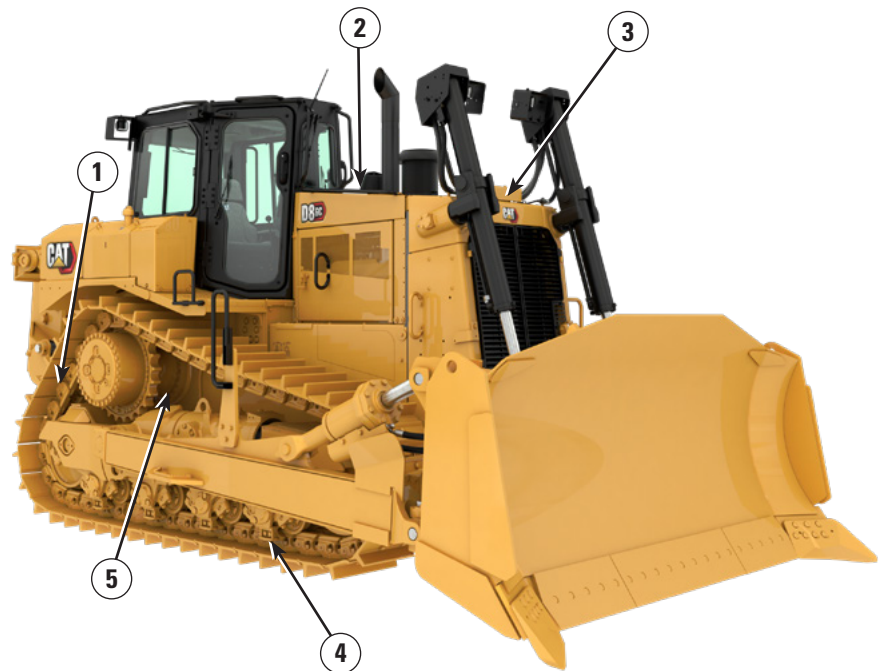
Equip your dozer with features to best meet your business needs.



- 1) Semi-Universal (SU) blade or SU blade with rock guard/wear plate
- 2) 2- or 4-battery package
- 3) Cab or Canopy with ROPS/FOPS
- 4) LED lights: 4-, 6-, or 10-light package
- 5) Ripper: Single shank, single shank with fixed link, single shank with pin puller, or multi-shank ripper
- 6) Suspended undercarriage: Heavy Duty or General Duty

Factory options are available to help you handle extreme cold.

- 1) Cold weather final drives
- 2) Cold weather batteries for added cranking power
- 3) Arctic lubricant
- 4) Suspended undercarriage – Heavy Duty cold weather
- 5) Arctic carrier rollers



# D8 GC Track-Type Tractor Specifications

## Track Shoes

	560 mm (22 in)	610 mm (24 in)	660 mm (26 in)	711 mm (28 in)
<b>Heavy Duty Positive Pin Retention (PPR) Track</b>				
Moderate Service		✓	✓	✓
Extreme Service	✓	✓	✓	✓
Super Extreme Service		✓		
<b>General Duty Track</b>				
Extreme Service	✓	✓		✓
Moderate Service		✓		

## Rippers

Hydraulic tip adjustment cylinders vary shank angle to aid penetration and help lift and shatter rock.

	Single Shank		Multi-Shank	
Overall Beam Width	—	—	2464 mm	8 ft 1 in
Maximum Penetration Force <sup>(1)</sup> (shank vertical)	124.9 kN	28,060 lb	118.5 kN	26,628 lb
Maximum Penetration (standard tip)	1158 mm	3 ft 10 in	786 mm	2 ft 7 in
Pryout Force	281.4 kN	63,237 lb	303 kN	68,128 lb
Maximum Clearance Raised <sup>(2)</sup>	670 mm	26 in	624 mm	24.5 in
Number of Pockets		1		3
Number of Shank Holes (vertical adjustment)		3		—
Pitch Adjustment				
Forward		15°		15°
Backward		10°		10°
Weight <sup>(3)</sup>	4140 kg <sup>(4)</sup>	9,119 lb <sup>(4)</sup>	4100 kg	9,031 lb

<sup>(1)</sup>Multi-Shank Ripper Forces measured with Center Tooth installed.

<sup>(2)</sup>Under tip, shank pinned in bottom hole.

<sup>(3)</sup>Does include hydraulic controls.

<sup>(4)</sup>Single shank ripper arrangement has optional push-block that adds 1095 kg (2,414 lb) to ripper weight.

# D8 GC Standard and Optional Equipment

## Standard and Optional Equipment

Standard and optional equipment may vary. Consult your Cat dealer for details.

	Standard	Optional		Standard	Optional
<b>DOZER ARRANGEMENTS</b>			<b>OPERATOR ENVIRONMENT</b>		
D8 GC Standard Arrangement	✓		Enclosed cab with integrated ROPS/FOPS	✓	
Desert Arrangement		✓	Adjustable contour suspension seat	✓	
<b>POWER TRAIN</b>			Cloth seat	✓	
Cat® 3406 DITA diesel engine	✓		Adjustable armrest	✓	
3F/3R speed powershift transmission	✓		Retractable seat belt, 76 mm (3 in) wide	✓	
4-planetary double reduction final drives	✓		Decelerator pedal	✓	
Torque divider	✓		Differential steering tiller bar with dual-twist control	✓	
Turbocharger	✓		Pilot operated hydraulic controls with electronic deactivation switch	✓	
Advanced Modular Cooling System (AMOCS) Radiator	✓		Electronic monitoring system (EMS) for hydraulic temperature, power train temperature, engine coolant, temperature, fuel level, engine speed, tachometer, service hour meter, system warning lamps	✓	
Louvered grill doors	✓		Dash foot pads	✓	
Precleaner	✓		Rearview mirror	✓	
Engine enclosures and hood	✓		Underhood air conditioning	✓	
Fan speed – basic	✓		Canopy with integrated ROPS/FOPS		✓
Cooling fan	✓		Vinyl seat		✓
Fuel system	✓		No air conditioning		✓
B100-compliant fuel lines (required for Indonesia)		✓	<b>ELECTRICAL</b>		
Fuel priming pump	✓		Back-up alarm	✓	
Muffler with mitered stack	✓		Alternator	✓	
Parking brake	✓		2 Batteries, 12V each, 24V system	✓	
Prescreener	✓		12V Converter, 10 amp with outlet in cab	✓	
Water separator	✓		Lights – 4	✓	
Cold weather final drives		✓	Forward warning horn	✓	
Advanced Modular Cooling System (AMOCS) Radiator – high ambient, abrasion resistant		✓	24V electric start	✓	
Turbine precleaner		✓	4 Batteries – 12V each, 24V system		✓
Turbine precleaner with screen		✓	4 Batteries – cold weather, 24V		✓
Engine enclosures and hood with added sealing, sandblast grid		✓	Lights – 6		✓
Fan speed – decrease		✓	Lights – 10		✓
Cooling fan – reversible		✓			
Cooling fan – coated		✓			

(continued on next page)

# D8 GC Standard and Optional Equipment

## Standard and Optional Equipment *(continued)*

Standard and optional equipment may vary. Consult your Cat dealer for details.

	Standard	Optional		Standard	Optional
<b>UNDERCARRIAGE</b>			<b>TECHNOLOGY PRODUCTS</b>		
Suspended undercarriage – Heavy Duty Positive Pin Retention (PPR)	✓		Product Link™, Basic Cellular PL243	✓	
Carrier rollers	✓		Product Link ready	✓	
Sealed and lubricated track – 44 section Positive Pin Retention (PPR)	✓		Product Link, Cellular PL641		✓
610 mm (24 in) Moderate Service PPR Track Shoes	✓		Product Link, Satellite PL631		✓
Equalizer bar	✓		No Product Link		✓
End track guiding guards	✓		<b>HYDRAULICS</b>		
Lifetime lubricated idlers	✓		Load sensing dozer (lift/tilt) hydraulics	✓	
Hydraulic track adjusters	✓		Ripper (lift/pitch) hydraulics	✓	
Lifetime lubricated track rollers	✓		Independent steering and implement hydraulic pumps	✓	
Replaceable sprocket rim segments	✓		<b>BULLDOZER</b>		
Two-piece master links	✓		Lift cylinder mounting	✓	
Suspended undercarriage – General Duty		✓	Single tilt hydraulics	✓	
Suspended undercarriage – Heavy Duty Cold Weather		✓	Single tilt push arms	✓	
Carrier rollers – Arctic		✓	Semi-Universal (SU) blade	✓	
No carrier rollers		✓	Semi-Universal (SU) blade with rock guard and wear plate		✓
560 mm (22 in) Extreme Service PPR Track Shoes		✓	<b>SERVICE AND MAINTENANCE</b>		
610 mm (24 in) Extreme Service PPR Track Shoes		✓	Front pull device	✓	
610 mm (24 in) Super Extreme Service PPR Track Shoes		✓	Hydraulic oil cooler	✓	
660 mm (26 in) Moderate Service PPR Track Shoes		✓	Operation and maintenance manual	✓	
660 mm (26 in) Extreme Service PPR Track Shoes		✓	Parts book – CD ROM	✓	
711 mm (28 in) Moderate Service PPR Track Shoes		✓	Sampling ports for engine oil, coolant, power train oil, hydraulic oil	✓	
711 mm (28 in) Extreme Service PPR Track Shoes		✓	Vandalism protection provision for cap-locks for fluid compartments, engine enclosures and battery box	✓	
560 mm (22 in) Extreme Service General Duty Track Shoes		✓	Lubricant	✓	
610 mm (24 in) Extreme Service General Duty Track Shoes		✓	Extended life coolant	✓	
610 mm (24 in) Moderate Service General Duty Track Shoes		✓	Lubricant – high ambient		✓
711 mm (28 in) Extreme Service General Duty Track Shoes		✓	Lubricant – arctic		✓
			Ether starting aid		✓
			240V engine heater		✓
			No ether starting aid		✓
			High speed oil change system		✓

*(continued on next page)*



# D8 GC Standard and Optional Equipment

## Standard and Optional Equipment *(continued)*

Standard and optional equipment may vary. Consult your Cat dealer for details.

	Standard	Optional		Standard	Optional
<b>REAR ATTACHMENTS</b>			<b>GUARDS</b>		
Single shank ripper		✓	Bottom guards	✓	
Single shank ripper – fixed link		✓	Rear cab screen		✓
Single shank ripper with pin puller		✓	Bottom guards – heavy duty desert		✓
Single shank ripper tooth		✓	Fuel tank guard		✓
Single shank ripper tooth – deep ripping		✓			
Multi-shank ripper		✓			
Multi-shank ripper tooth		✓			
Rear counterweight		✓			
Additional counterweight		✓			
No rear attachment		✓			



# D8 GC

## Desert/High Abrasion

***Equip your dozer with factory features designed to enhance machine performance in extremely sandy or abrasive underfoot conditions.***

### **Desert/High Abrasion Package**

- Cooling system is designed for high debris environments, with easy access for cleanout.
- Specially coated fan and radiator help resist abrasion.
- Core protection grid.
- High ambient fluids package.
- Sealed bottom guard and added seals to help keep fine abrasive particles out of components.
- Optional wear plates can be replaced to give you longer blade life when working in abrasive conditions.

### **Built to Last**

- Equipped with the well-known Cat® 3406C engine and mechanical transmission for power and ease of maintenance.
- Caterpillar designed power train components work as a system for reliability and performance.
- Durable, proven Cat 3-speed mechanical planetary power shift transmission.
- Heavy structures make for a robust machine that can stand up to high impact shock loads and twisting forces.
- Caterpillar elevated sprocket undercarriage protects the power train from shock loads.
- Suspended undercarriage provides a smooth ride and better traction in uneven terrain.

### **Maximize Uptime**

- Easy maintenance with widely available parts.
- Simple mechanical systems are easy to diagnose, maintain and repair, even in remote locations.
- Major components are modular for easy maintenance and repair access.
- Wide access doors and grouped service points save routine maintenance time.
- Individual radiator cores can be quickly replaced for ease of service.
- Exclusive new Cat hydraulic and power train oil filters offer extended service intervals to save you time and money.
- Product Link™ telematics\* help simplify your maintenance by tracking machine location and service hours.

\*Not available in all areas. Please consult your Cat dealer.

# D8 GC Desert/High Abrasion Specifications

## Engine

Engine Model	Cat® 3406C DITA	
Emissions	Noncertified	
Build Number	18A	
Engine Power (maximum)		
SAE J1995	252 kW	338 hp
ISO 14396	247 kW	331 hp
ISO 14396 (DIN)	335 mhp	
Net Power (2,100 rpm)		
ISO 9249/SAE J1349	226 kW	303 hp
ISO 9249 (DIN)	307 mhp	
80/1269/EEC	226 kW	303 hp
Net Power (maximum)		
ISO 9249/SAE J1349	239 kW	320 hp
ISO 9249/SAE J1349 (DIN)	325 mhp	
80/1269/EEC	239 kW	320 hp
Bore	137 mm	5.4 in
Stroke	165 mm	6.5 in
Displacement	14.6 L	893 in <sup>3</sup>
Biodiesel Capability	Up to B100 <sup>1</sup>	

- Net power advertised is the power available at the flywheel when engine is equipped with a fan at maximum speed, air cleaner, muffler and alternator.
- Advertised power is tested per the specified standard in effect at the time of manufacture.

- No deratings required up to 3800 m (12,500 ft) altitude.

<sup>1</sup> Cat engines are compatible with the following renewable, alternative, and bio-fuels\* with lower greenhouse gas emission impact:

- ✓ Up to B20 biodiesel (FAME)\*\*

- ✓ Up to 100% HVO and GTL renewable fuels

\*Refer to guidelines for successful application. Please consult your Cat dealer or “Caterpillar Machine Fluids Recommendations” (SEBU6250) for details.

\*\*Up to B100 capable when equipped with optional B100-compliant fuel lines. Please consult the Operations and Maintenance Manual (OMM) for further information.

## Service Refill Capacities

Fuel Tank	625 L	165 gal
Cooling System	92 L	24.3 gal
Engine Crankcase	32.5 L	8.6 gal
Power Train	144 L	38 gal
Final Drives (each)	13.5 L	3.6 gal
Pivot Shaft	40 L	2.6 gal
Hydraulic Tank	72 L	19 gal

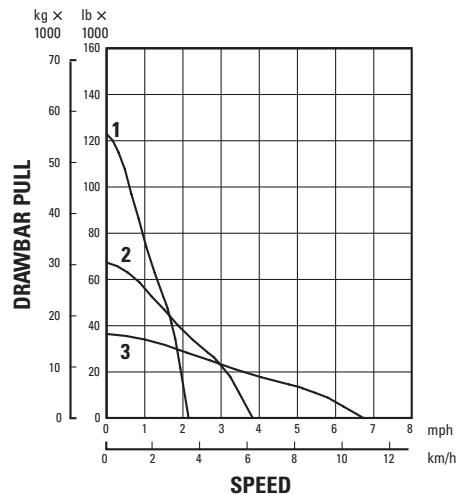
## Hydraulic Controls

Pump Type – Implements	Variable Displacement Piston	
Pump Capacity	7000 kPa	1,015 psi
RPM at Rated Engine Speed	2,100 rpm	
Pump Output	239 L/min	63.1 gal/min
Lift Cylinder Flow	325 L/min	85.9 gal/min
Tilt Cylinder Flow	170 L/min	44.9 gal/min
Ripper Cylinder Flow	190 L/min	50.2 gal/min
Main Relief Valve		
Pressure Setting	24 100 kPa	3,500 psi
Maximum Operating Pressure		
Bulldozer, Lift	24 100 kPa	3,500 psi
Bulldozer, Tilt	24 100 kPa	3,500 psi
Ripper, Lift	24 100 kPa	3,500 psi
Ripper, Tilt	24 100 kPa	3,500 psi
Steering	38 000 kPa	5,511 psi

## Transmission

1.0 Forward	3.5 km/h	2.2 mph
2.0 Forward	6.2 km/h	3.9 mph
3.0 Forward	10.8 km/h	6.7 mph
1.0 Reverse	4.7 km/h	2.9 mph
2.0 Reverse	8.1 km/h	5.0 mph
3.0 Reverse	13.9 km/h	8.6 mph

### D8 GC



KEY  
 1 – 1st Gear  
 2 – 2nd Gear  
 3 – 3rd Gear

**NOTE:** Usable pull will depend upon weight and traction of equipped tractor.

# D8 GC Desert/High Abrasion Specifications

## Standards

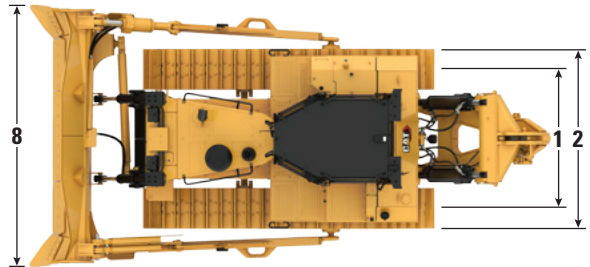
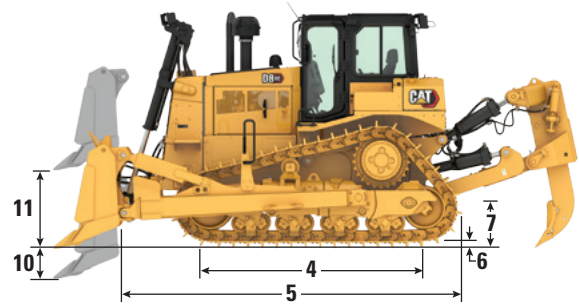
ROPS/FOPS	Integrated Rollover Protective Structure (ROPS) offered by Caterpillar for the machine meets ROPS criteria ISO 3471:2008 Falling Object Protective Structure (FOPS) meets ISO 3449:2005 Level II
Brakes	Brakes meet the standard ISO 10265:2008
Sound Level Information; including Machines in Eurasian Economic Union Countries	The declared dynamic operator sound pressure level is 80 dB(A) when “ISO 6396:2008” is used to measure the value for an enclosed cab. The cab was properly installed and maintained. The measurement was conducted with the cab doors and the cab windows closed. Hearing protection may be needed when the machine is operated with an open operator station for extended periods, in a noisy environment, or with a cab that is not properly maintained. The declared exterior sound power level is 116 dB(A) when the value is measured according to the dynamic test procedures and the conditions that are specified in “ISO 6395:2008.” The declared sound levels listed above include both measurement uncertainty and uncertainty due to production variation.

# D8 GC Desert/High Abrasion Specifications

## D8 GC Desert/High Abrasion

Operating Weight	37 876 kg	83,502 lb
Shipping Weight	33 122 kg	73,021 lb
Ground Pressure (ISO 16754)	86.0 kPa	12.5 psi
Shoe Type – Heavy Duty	Extreme Service	
Width of Standard Track Shoe	610 mm	24 in
Shoes/Side	44	
Track Rollers per Side	8	
Ground Contact Area (ISO 16754)	3.91 m <sup>2</sup>	6,060 in <sup>2</sup>
<b>1</b> Track Gauge	2083 mm	82 in
<b>2</b> Width of Tractor (without trunnions)	2693 mm	106 in
<b>3</b> Machine Height from Tip of Grouser to Exhaust Stack	3543 mm	139.4 in
Top of Cab	3498 mm	137.7 in
Lights Mounted at top of Cylinder	3527 mm	138.8 in
<b>4</b> Length of Track on Ground	3206 mm	126.2 in
<b>5</b> Length of Basic Tractor (tag link trunnion to tip of rear grouser)	4625 mm	182 in
With the following attachments add:		
Single Shank Ripper (with tip at ground line)	1519 mm	59.8 in
Multi-Shank Ripper (with tip at ground line)	1613 mm	63.5 in
Drawbar	406 mm	16.0 in
SU Blade	1844 mm	72.6 in
Pitch	216 mm	8.5 in
<b>6</b> Grouser Height	84 mm	3.3 in
<b>7</b> Ground Clearance	622 mm	24.4 in

- Operating Weight – Includes hydraulic controls, tilt cylinder, coolant, lubricants, 100% fuel, ROPS/FOPS cab, SU-Blade, Single-Shank Ripper, 610 mm (24 in) Extreme Service shoes, Carrier Rollers, Blast Grid and operator.
- Shipping Weight – Includes coolant, lubricants, 20% fuel, ROPS, FOPS cab, Single-Shank Ripper and 610 mm (24 in) Extreme Service shoes.



## Blades

	Semi-Universal (SU)		Semi-Universal (SU) with Rock Guard/Wear Plate	
Capacity	8.7 m <sup>3</sup>	11.4 yd <sup>3</sup>	8.7 m <sup>3</sup>	11.4 yd <sup>3</sup>
Width (includes blade tilt cylinder)	3812 mm	12.5 ft	3812 mm	12.5 ft
<b>8</b> Width over End Bits	3940 mm	12.9 ft	3940 mm	12.9 ft
<b>9</b> Height	1690 mm	5.5 ft	1960 mm	6.4 ft
<b>10</b> Dig Depth	582 mm	22.9 in	582 mm	22.9 in
<b>11</b> Lift Height	1231 mm	48 in	1231 mm	48 in
<b>12</b> Maximum Tilt	951 mm	36 in	951 mm	36 in
Blade Weight (without hydraulic controls)	4254 kg	9,378 lb	4754 kg	10,480 lb

# D8 GC Desert/High Abrasion Specifications

## D8 GC Desert/High Abrasion Features

Equip your dozer from the factory to take on the high temperatures and abrasive conditions of desert work.



- 1) Sealed bottom guard and added seals to help keep fine abrasive particles out of components
- 2) High debris cooling system with easy access for cleanout
- 3) Specially coated fan and radiator to help resist abrasion
- 4) Core protection grid
- 5) Optional wear plates can be replaced to give you longer blade life when working in abrasive conditions
- 6) High ambient fluids

# D8 GC Desert/High Abrasion Specifications

## Track Shoes

	560 mm (22 in)	610 mm (24 in)	660 mm (26 in)	711 mm (28 in)
<b>Heavy Duty Positive Pin Retention (PPR) Track</b>				
Moderate Service		✓	✓	✓
Extreme Service	✓	✓	✓	✓
Super Extreme Service		✓		
<b>General Duty Track</b>				
Extreme Service	✓	✓		✓
Moderate Service		✓		

## Rippers

Hydraulic tip adjustment cylinders vary shank angle to aid penetration and help lift and shatter rock.

	Single Shank		Multi-Shank	
Overall Beam Width	—	—	2464 mm	8 ft 1 in
Maximum Penetration Force <sup>(1)</sup> (shank vertical)	124.9 kN	28,060 lb	118.5 kN	26,628 lb
Maximum Penetration (standard tip)	1158 mm	3 ft 10 in	786 mm	2 ft 7 in
Pryout Force	281.4 kN	63,237 lb	303 kN	68,128 lb
Maximum Clearance Raised <sup>(2)</sup>	670 mm	26 in	624 mm	24.5 in
Number of Pockets		1		3
Number of Shank Holes (vertical adjustment)		3		—
Pitch Adjustment				
Forward		15°		15°
Backward		10°		10°
Weight <sup>(3)</sup>	4140 kg <sup>(4)</sup>	9,119 lb <sup>(4)</sup>	4100 kg	9,031 lb

<sup>(1)</sup>Multi-Shank Ripper Forces measured with Center Tooth installed.

<sup>(2)</sup>Under tip, shank pinned in bottom hole.

<sup>(3)</sup>Does include hydraulic controls.

<sup>(4)</sup>Single shank ripper arrangement has optional push-block that adds 1095 kg (2,414 lb) to ripper weight.

# D8 GC Desert/High Abrasion Standard and Optional Equipment

## Standard and Optional Equipment

Standard and optional equipment may vary. Consult your Cat dealer for details.

	Standard	Optional		Standard	Optional
<b>POWER TRAIN</b>			<b>OPERATOR ENVIRONMENT</b>		
Cat® 3406C DITA diesel engine	✓		Enclosed cab with integrated ROPS/FOPS	✓	
3F/3R speed powershift transmission	✓		Adjustable contour suspension seat	✓	
4-planetary double reduction final drives	✓		Cloth seat	✓	
Torque divider	✓		Adjustable armrest	✓	
Turbocharger	✓		Retractable seat belt, 76 mm (3 in) wide	✓	
Advanced Modular Cooling System (AMOCS) Radiator – high ambient, abrasion resistant	+		Decelerator pedal	✓	
Louvered grill doors	✓		Differential steering tiller bar with dual-twist control	✓	
Turbine precleaner	+		Pilot operated hydraulic controls with electronic deactivation switch	✓	
Engine enclosures and hood	✓		Electronic monitoring system (EMS) for hydraulic temperature, power train temperature, engine coolant, temperature, fuel level, engine speed, tachometer, service hour meter, system warning lamps	✓	
Engine enclosures and hood with added sealing, sandblast grid	+		Dash foot pads	✓	
Fan speed – decrease	+		Rearview mirror	✓	
Cooling fan – coated	+		Underhood air conditioning	✓	
Fuel system	✓		Canopy with integrated ROPS/FOPS		✓
B100-compliant fuel lines (required for Indonesia)		✓	Vinyl seat		✓
Fuel priming pump	✓		No air conditioning		✓
Muffler with mitered stack	✓		<b>ELECTRICAL</b>		
Parking brake	✓		Back-up alarm	✓	
Prescreener	✓		Alternator	✓	
Water separator	✓		2 Batteries, 12V each, 24V system	✓	
Turbine precleaner with screen		✓	12V Converter, 10 amp with outlet in cab	✓	
			Lights – 4	✓	
			Forward warning horn	✓	
			24V electric start	✓	
			4 Batteries – 12V each, 24V system		✓
			Lights – 6		✓
			Lights – 10		✓

+ Included in Desert/High Abrasion package

(continued on next page)



# D8 GC Desert/High Abrasion Standard and Optional Equipment

## Standard and Optional Equipment *(continued)*

Standard and optional equipment may vary. Consult your Cat dealer for details.

	Standard	Optional		Standard	Optional
<b>UNDERCARRIAGE</b>			<b>TECHNOLOGY PRODUCTS</b>		
Suspended undercarriage – Heavy Duty Positive Pin Retention (PPR)	✓		Product Link™, Basic Cellular PL243	✓	
Carrier rollers	✓		Product Link ready	✓	
Sealed and lubricated track – 44 section Positive Pin Retention (PPR)	✓		Product Link, Cellular PL641		✓
610 mm (24 in) Moderate Service PPR Track Shoes	✓		Product Link, Satellite PL631		✓
Equalizer bar	✓		No Product Link		✓
End track guiding guards	✓		<b>HYDRAULICS</b>		
Lifetime lubricated idlers	✓		Load sensing dozer (lift/tilt) hydraulics	✓	
Hydraulic track adjusters	✓		Ripper (lift/pitch) hydraulics	✓	
Lifetime lubricated track rollers	✓		Independent steering and implement hydraulic pumps	✓	
Replaceable sprocket rim segments	✓		<b>BULLDOZER</b>		
Two-piece master links	✓		Lift cylinder mounting	✓	
Suspended undercarriage – General Duty		✓	Single tilt hydraulics	✓	
No carrier rollers		✓	Single tilt push arms	✓	
560 mm (22 in) Extreme Service PPR Track Shoes		✓	Semi-Universal (SU) blade	✓	
610 mm (24 in) Extreme Service PPR Track Shoes		✓	Semi-Universal (SU) blade with rock guard and wear plate		✓
610 mm (24 in) Super Extreme Service PPR Track Shoes		✓	<b>SERVICE AND MAINTENANCE</b>		
660 mm (26 in) Moderate Service PPR Track Shoes		✓	Front pull device	✓	
660 mm (26 in) Extreme Service PPR Track Shoes		✓	Hydraulic oil cooler	✓	
711 mm (28 in) Moderate Service PPR Track Shoes		✓	Operation and maintenance manual	✓	
711 mm (28 in) Extreme Service PPR Track Shoes		✓	Parts book – CD ROM	✓	
560 mm (22 in) Extreme Service General Duty Track Shoes		✓	Sampling ports for engine oil, coolant, power train oil, hydraulic oil	✓	
610 mm (24 in) Extreme Service General Duty Track Shoes		✓	Vandalism protection provision for cap-locks for fluid compartments, engine enclosures and battery box	✓	
711 mm (28 in) Extreme Service General Duty Track Shoes		✓	Lubricant – high ambient	+	
			Extended life coolant	✓	
			Lubricant – arctic		✓
			Ether starting aid		✓
			240V engine heater		✓
			No ether starting aid		✓
			High speed oil change system		✓

+ Included in Desert/High Abrasion package

*(continued on next page)*

# D8 GC Desert/High Abrasion Standard and Optional Equipment

## Standard and Optional Equipment *(continued)*

Standard and optional equipment may vary. Consult your Cat dealer for details.

	Standard	Optional		Standard	Optional
<b>REAR ATTACHMENTS</b>			<b>GUARDS</b>		
Single shank ripper		✓	Bottom guards	✓	
Single shank ripper – fixed link		✓	Bottom guards – heavy duty desert	+	
Single shank ripper with pin puller		✓	Rear cab screen		✓
Single shank ripper tooth		✓	Fuel tank guard		✓
Single shank ripper tooth – deep ripping		✓			
Multi-shank ripper		✓			
Multi-shank ripper tooth		✓			
Rear counterweight		✓			
Additional counterweight		✓			
No rear attachment		✓			

+ Included in Desert/High Abrasion package

For more complete information on Cat products, dealer services, and industry solutions, visit us on the web at [www.cat.com](http://www.cat.com)

© 2021 Caterpillar  
All rights reserved

AEXQ3337-01 (09-2021)  
Replaces AEXQ3337  
Build Number: 18A  
(Afr-ME, CIS, India, Indonesia,  
SE Asia, S Am excluding Brazil)

Materials and specifications are subject to change without notice. Featured machines in photos may include additional equipment. See your Cat dealer for available options.

CAT, CATERPILLAR, LET'S DO THE WORK, their respective logos, "Caterpillar Corporate Yellow," the "Power Edge" and Cat "Modern Hex" trade dress as well as corporate and product identity used herein, are trademarks of Caterpillar and may not be used without permission.

