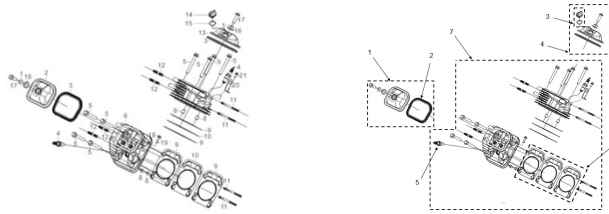


## RP12000E PARTS LIST

### Important Information

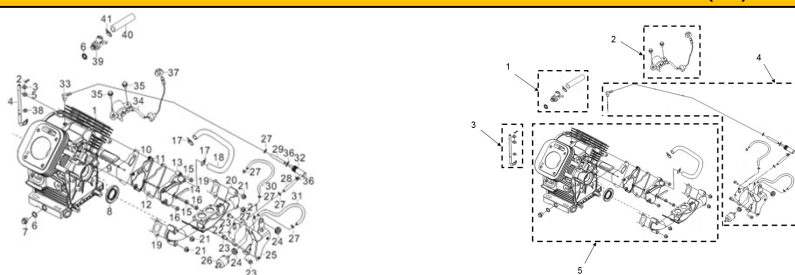
The service parts list information provided within the Parts Diagram document is all inclusive of the service parts which are presently available for the defined model. Not all individual parts are serviceable at the piece part level. If an itemized part does not have a defined corresponding service part listed, the defined group level service part must be ordered.

**FIG.1 HEAD SUBASSEMBLY, CYLINDER / PLUG,SPARK(E01)**



REF.NO.	Cat Individual Part Number	DESCRIPTION	L mm	W mm	H mm	Weight (g)	QTY	Quantity per group	Cat Group Part Number	Cat Group Part Name	Quantity	Group Name	Length (mm)	Width (mm)	Height (mm)	Weight (g)
E01-1		GASKET, CYLINDER HEAD COVER	26	26	3	4	2	1								
E01-2		COVER, CYLINDER HEAD	125	104	38	164	1	1								
E01-3	501-5295	CYLINDER HEAD COVER GASKET	127	5	102	22	2	1	501-5298	COVER GP-CYLINDER HEAD	1	CYLINDER HEAD COVER GROUP	127	104	46	227
E01-16		GASKET, CYLINDER HEAD COVER BOLT	24	24	9	3	2	1								
E01-17		BOLT, CYLINDER HEAD	60	18	18	34	2	1								
E01-6		HEAD SUBASSEMBLY, CYLINDER	175	175	100	1834	1	1								
E01-7		HEAD SUBASSEMBLY, RIGHT CYLINDER	175	175	100	1834	1	1								
E01-18		BOLT	23	16	16	16	1	1								
E01-19		WASHER, FLAT	15	15	1	0.8	1	1								
E01-20		LUG	65	33	22	39	1	1								
E01-21		BOLT, HEXAGONAL FLANGE SHOULDER	28	17	17	15	1	1								
E01-4	501-5296	SPARK PLUG	81	24	24	60	2	2	501-5301	HEAD GP-CYLINDER (BASIC)	1	CYLINDER HEAD GROUP	355	200	105	4605
E01-10		CORE PLATE	141	1	105	32	2	2								
E01-8		PIN	20	12	12	4	4	4								
E01-9		GASKET, CYLINDER HEAD	141	1	105	14	4	4								
E01-11		STUD	63	8	8	21	4	4								
E01-12		STUD	107	11	11	25	4	4								
E01-5		BOLT, CYLINDER HEAD	89	16	16	53	8	8								
E01-10		CORE PLATE	141	1	105	32	2	1								
E01-9		GASKET, CYLINDER HEAD	141	1	105	14	4	2	501-5300	GASKET GP-CYLINDER HEAD	2	CYLINDER HEAD GASKET GROUP	141	5	105	60
E01-14		PLUG SUBASSEMBLY, ENGINE OIL	35	35	31	13	1	1								
E01-15		RING, SEAL	25	25	4	1	1	1	501-5297	CAP GP-OIL	1	OIL CAP GROUP	35	35	35	14
E01-1		GASKET, CYLINDER HEAD COVER	26	26	3	4	2	1								
E01-3	501-5295	CYLINDER HEAD COVER GASKET	127	5	102	22	2	1								
E01-13		COVER, CYLINDER HEAD	125	104	38	161	1	1								
E01-16		GASKET, CYLINDER HEAD COVER BOLT	24	24	9	3	2	1	501-5299	COVER GP-CYLINDER HEAD	1	CYLINDER HEAD COVER GROUP	127	104	46	225
E01-17		BOLT, CYLINDER HEAD	60	18	18	34	2	1								
E01-14		PLUG SUBASSEMBLY, ENGINE OIL	35	35	31	13	1	1								
E01-15		RING, SEAL	25	25	4	1	1	1								

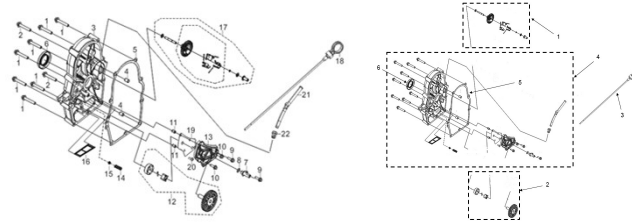
**FIG.2 CRANKCASE.(E01)**



REF.NO.	Cat Individual Part Number	DESCRIPTION	L mm	W mm	H mm	Weight (g)	QTY	Cat Group Part Number	Cat Group Part Name	Quantity	Group Name	Length (mm)	Width (mm)	Height (mm)	Weight (g)
E02-2		PIN	20	8	2	0.6	1	501-5302	GOVERNOR GP	1	GOVERNOR GROUP	187	60	15	89
E02-3		WASHER, FLAT	23	23	2	6	1								
E02-4		ARM, GOVERNOR	187	9	56	80	1								
E02-5		SEAL, OIL	14	14	4	1	1								
E02-38		WASHER, FLAT	15	15	1	1.8	1								
E02-1		CRANKCASE SUBASSEMBLY.	350	310	200	8500	1	501-5303	CRANKCASE GP	1	CRANKCASE GROUP	360	325	600	9427
E02-6		WASHER, FLAT	21	2	21	1	2								
E02-7		BOLT, DRAIN PLUG	27	20	20	23	1								
E02-8		SEAL, OIL	58	58	8	26	1								
E02-9		STRAINER, BREATH GROOVE	48	28	5	3	1								
E02-10		PIECE, BREATH	126	99	7	62	1								
E02-11		GASKET, BREATH GROOVE	126	99	1	2	1								
E02-12		GASKET, BREATH GROOVE	126	99	1	4	1								
E02-13		PLATE, BREATH GROOVE COVER	126	99	33	120	1								
E02-14		CLAMP	68	15	1	6.4	1								
E02-18		TUBE, BREATHER	180	120	38	50	1								
E02-20		TUBE, INTAKE	340	75	75	555	1								
E02-15		BOLT	36	14	14	10	2								
E02-16		BOLT	26	14	14	8	2								
E02-17		CLAMP	30	7	29	2	2								
E02-19		GASKET, INLET	74	1	46	2	2								
E02-21		NUT	11	11	8	7	4								
E02-1		CRANKCASE SUBASSEMBLY.	350	310	200	8500	1	501-5303	CRANKCASE GP	1	CRANKCASE GROUP	360	325	600	9427
E02-6		WASHER, FLAT	21	2	21	1	2								
E02-7		BOLT, DRAIN PLUG	27	20	20	23	1								
E02-8		SEAL, OIL	58	58	8	26	1								
E02-9		STRAINER, BREATH GROOVE	48	28	5	3	1								
E02-10		PIECE, BREATH	126	99	7	62	1								
E02-11		GASKET, BREATH GROOVE	126	99	1	2	1								
E02-12		GASKET, BREATH GROOVE	126	99	1	4	1								
E02-13		PLATE, BREATH GROOVE COVER	126	99	33	120	1								
E02-14		CLAMP	68	15	1	6.4	1								
E02-18		TUBE, BREATHER	180	120	38	50	1								
E02-20		TUBE, INTAKE	340	75	75	555	1								
E02-15		BOLT	36	14	14	10	2								
E02-16		BOLT	26	14	14	8	2								
E02-17		CLAMP	30	7	29	2	2								
E02-19		GASKET, INLET	74	1	46	2	2								
E02-21		NUT	11	11	8	7	4								

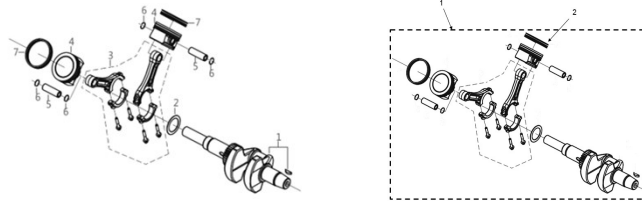
E02-1		CRANKCASE SUBASSEMBLY.	350	310	200	8500	1	1										
E02-6		WASHER, FLAT	21	2	21	1	2	1										
E02-7		BOLT, DRAIN PLUG	27	20	20	23	1	1										
E02-8		SEAL, OIL	58	58	8	26	1	1										
E02-9		STRAINER, BREATH GROOVE	48	28	5	3	1	1										
E02-10		PIECE, BREATH	126	99	7	62	1	1										
E02-11		GASKET, BREATH GROOVE	126	99	1	2	1	1										
E02-12		GASKET, BREATH GROOVE	126	99	1	4	1	1										
E02-13		PLATE, BREATH GROOVE COVER	126	99	33	120	1	1										
E02-14		CLAMP	68	15	1	6.4	1	1										
E02-18		TUBE, BREATHER	180	120	38	50	1	1										
E02-20		TUBE, INTAKE	340	75	75	555	1	1										
E02-15		BOLT	36	14	14	10	2	2										
E02-16		BOLT	26	14	14	8	2	2										
E02-17		CLAMP	30	7	29	2	2	2										
E02-19		GASKET, INLET	74	1	46	2	2	2										
E02-21		NUT	11	11	8	7	4	4										
E02-22		PUMP ASSY, GASOLINE	80	27	75	103	1	1										
E02-25		SUPPORT, GASOLINE PUMP	141	39	88	79	1	1										
E02-26		STRAINER, FUEL	64	33	33	12	1	1										
E02-28		TUBE,NEGATIVE PRESSURE	95	15	47	12	1	1										
E02-29		TUBE,NEGATIVE PRESSURE	98	16	16	12	1	1										
E02-30		TUBE, FUEL	122	10	10	15	1	1										
E02-31		TUBE, FUEL	500	10	10	15	1	1										
E02-32		SEPARATOR, GAS AND OIL	62	27	27	9	1	1										
E02-33		MOUTH, NEGATIVE PRESSURE	36	13	25	8	1	1										
E02-24		SLEEVE, GASOLINE PUMP RUBBER	20	20	8	2	2	2										
E02-36		CLAMP	Ø14			3	2	2										
E02-23		BOLT	22	14	14	7	3	3										
E02-27		CLAMP	18	8	14	2	6	6										
E02-22		PUMP ASSY, GASOLINE	80	27	75	103	1	1										
E02-25		SUPPORT, GASOLINE PUMP	141	39	88	79	1	1										
E02-26		STRAINER, FUEL	64	33	33	12	1	1										
E02-28		TUBE,NEGATIVE PRESSURE	95	15	47	12	1	1										
E02-29		TUBE,NEGATIVE PRESSURE	98	16	16	12	1	1										
E02-30		TUBE, FUEL	122	10	10	15	1	1										
E02-31		TUBE, FUEL	500	10	10	15	1	1										
E02-32		SEPARATOR, GAS AND OIL	62	27	27	9	1	1										
E02-33		MOUTH, NEGATIVE PRESSURE	36	13	25	8	1	1										
E02-24		SLEEVE, GASOLINE PUMP RUBBER	20	20	8	2	2	2										
E02-36		CLAMP	Ø14			3	2	2										
E02-23		BOLT	22	14	14	7	3	3										
E02-27		CLAMP	18	8	14	2	6	6										
E02-22		PUMP ASSY, GASOLINE	80	27	75	103	1	1										
E02-25		SUPPORT, GASOLINE PUMP	141	39	88	79	1	1										
E02-26		STRAINER, FUEL	64	33	33	12	1	1										
E02-28		TUBE,NEGATIVE PRESSURE	95	15	47	12	1	1										
E02-29		TUBE,NEGATIVE PRESSURE	98	16	16	12	1	1										
E02-30		TUBE, FUEL	122	10	10	15	1	1										
E02-31		TUBE, FUEL	500	10	10	15	1	1										
E02-32		SEPARATOR, GAS AND OIL	62	27	27	9	1	1										
E02-33		MOUTH, NEGATIVE PRESSURE	36	13	25	8	1	1										
E02-24		SLEEVE, GASOLINE PUMP RUBBER	20	20	8	2	2	2										
E02-36		CLAMP	Ø14			3	2	2										
E02-23		BOLT	22	14	14	7	3	3										
E02-27		CLAMP	18	8	14	2	6	6										
E02-34		SENSOR, ENGINE OIL	140	34	47	40	1	1										
E02-37		NUT	19	19	9	8	1	1										
E02-35		BOLT	36	14	14	10	2	2										
E02-6		WASHER, FLAT	21	2	21	1	2	1										
E02-39		OIL DRAIN VALVE	55	32	22	102	1	1										
E02-40		COOLING PIPE	285	17	17	56.4	1	1										
E02-41		CLAMP	20	15	24	5	1	1										

**FIG.3 COVER SUBASSEMBLY, CRANKCASE / GEAR ASSY, GOVERNOR(E16)**



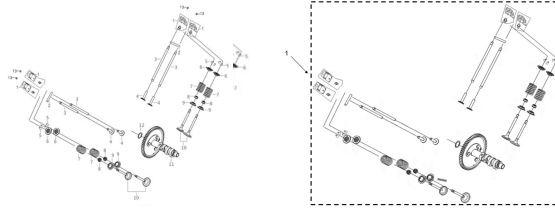
REF.NO.	Cat Individual Part Number	DESCRIPTION	L mm	W mm	H mm	Weight (g)	QTY	Quantity per group	Cat Group Part Number	Cat Group Part Name	Quantity	Group Name	Length (mm)	Width (mm)	Height (mm)	Weight (g)
E03-3		COVER SUBASSEMBLY, CRANKCASE	295	22	45	1990	1	1	501-5312	COVER GP-REAR	1	CRANKCASE COVER GROUP	295	50	80	2483
E03-5	501-5309	CRANKCASE COVER GASKET	295	200	1	4	1	1								
E03-6	501-5308	CRANKCASE COVER OIL SEAL	58	58	8	26	1	1								
E03-7		TUBE, SUCTION OIL	58	23	31	24	1	1								
E03-8		O-SHAPE WASHER	15	15	3	1	1	1								
E03-13		COVER, OIL PUMP	164	82	9	140	1	1								
E03-14		SPRING, PRESSURE RELIEF VALVE	24	10	10	1.4	1	1								
E03-15		BALL, STEEL	10	10	10	4	1	1								
E03-16		STRAINER, OIL	65	7	37	7	1	1								
E03-19		GASKET, OIL PUMP	165	85	1	1	1	1								
E03-20		BOLT	19	8	8	2.8	1	1								
E03-21		OIL FILLING PIPE	177	51	18	60	1	1								
E03-22		OIL SEAL	24	18	18	3	1	1								
E03-2		BOLT	62	15	15	26	2	2								
E03-4		PIN	14	10	10	2	2	2								
E03-9		BOLT	26	14	14	8	2	2								
E03-10		BOLT	32	14	14	9	2	2								
E03-11		PIN	10	8	8	1.4	2	2								
E03-1		BOLT	57	15	15	24	7	7								
E03-12	501-5311	OIL PUMP ASSEMBLY	74	74	54	124	1									
E03-17	501-5310	GOVERNOR GEAR ASSEMBLY	56	56	55	76	1									
E03-18	501-5437	OIL LEVEL GAUGE	315	47	20	25	1									
E03-18	501-5437	OIL LEVEL GAUGE	315	47	20	25	1									

**FIG.4 ROD,CRANKSHAFT CONNETING (E03)**



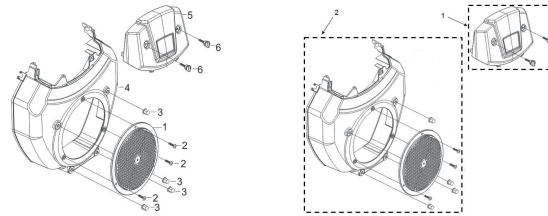
REF.NO.	Cat Individual Part Number	DESCRIPTION	L mm	W mm	H mm	Weight (g)	QTY	Quantity per group	Cat Group Part Number	Cat Group Part Name	Quantity	Group Name	Length (mm)	Width (mm)	Height (mm)	Weight (g)
E04-1		CRANKSHAFT ASSY.	345	125	100	4930	1	1	501-5314	CRANKSHAFT GP	1	CRANKSHAFT GROUP	210	140	350	5926
E04-2		WASHER, THRUST	54	54	1	8.6	1	1								
E04-3		ROD, CONNECTING	165	74	19	190	2	2								
E04-4		PISTON	78	78	45	220	2	2								
E04-5		PIN, PISTON	55	17	17	64	2	2								
E04-7	501-5313	PISTON RING	80	80	5	17	2	2								
E04-6		CLIP, PISTON PIN	9	9	1	1	4	4								

**FIG.5 TRAIN, VALVE / CAMSHAFT SUBASSEMBLY (E05)**



REF.NO.	Cat Individual Part Number	DESCRIPTION	L mm	W mm	H mm	Weight (g)	QTY	Quantity per group	Cat Group Part Number	Cat Group Part Name	Quantity	Group Name	Length (mm)	Width (mm)	Height (mm)	Weight (g)
E05-10		VALVE	87	34	64	90	2	2	501-5315	CAMSHAFT GP	1	CAMSHAFT GROUP	250	200	75	1685
E05-11		CAMSHAFT ASSY.	155	120	20	980	1	1								
E05-12		WASHER, CAMSHAFT	23	23	1	1.2	1	1								
E05-2		SHAFT, VALVE ROCKER	71	7	7	21	2	2								
E05-1		ROCKER SUBASSEMBLY, VALVE	58	42	25	64	4	4								
E05-3		LIFTER SUBASSEMBLY, VALVE	152	7	7	20	4	4								
E05-4		TAPPET, VALVE	35	20	20	15	4	4								
E05-6		SEAT, VALVE SPRING	26	26	9	13	4	4								
E05-7		SPRING, VALVE	39	21	21	24	4	4								
E05-8		GUIDE, SEAL	14	14	7	1	4	4								
E05-9		RETAINER, VALVE SPRING	27	27	6	2	4	4								
E05-5		CLAMP, VALVE LOCK	9	5	6	1	8	8								
E05-10		VALVE	87	34	64	90	2	2								
E05-11		CAMSHAFT ASSY.	155	120	20	980	1	1								
E05-12		WASHER, CAMSHAFT	23	23	1	1.2	1	1								
E05-2		SHAFT, VALVE ROCKER	71	7	7	21	2	2								
E05-1		ROCKER SUBASSEMBLY, VALVE	58	42	25	64	4	4								
E05-3		LIFTER SUBASSEMBLY, VALVE	152	7	7	20	4	4								
E05-4		TAPPET, VALVE	35	20	20	15	4	4								
E05-6		SEAT, VALVE SPRING	26	26	9	13	4	4								
E05-7		SPRING, VALVE	39	21	21	24	4	4								
E05-8		GUIDE, SEAL	14	14	7	1	4	4								
E05-9		RETAINER, VALVE SPRING	27	27	6	2	4	4								
E05-5		CLAMP, VALVE LOCK	9	5	6	1	8	8								
E05-13		NUT, VALVE LOCK	10	9	5	4	4	4								

**FIG.6 OUTER HOUSING (E08)**



REF.NO.	Cat Individual Part Number	DESCRIPTION	L mm	W mm	H mm	Weight (g)	QTY	Quantity per group	Cat Group Part Number	Cat Group Part Name	Quantity	Group Name	Length (mm)	Width (mm)	Height (mm)	Weight (g)
E06-1		SHIELD, SHROUD	230	230	20	114	1	1	501-5316	SHROUD GP-AIR	1	SHROUD GROUP	400	150	410	700
E06-4		SHROUD ASSY.	390	125	405	540	1	1								
E06-2		SCREW	11	8	8	2	3	3								
E06-3		NUT	17	14	14	8	4	4	501-5317	COVER GP	1	COVER GROUP	270	165	35	155
E06-5		PLATE, FAN SHIELD DECORATED	270	165	35	141	1	1								
E06-6		HANDLE SUBASSEMBLY, LOCK	26	16	16	6	2	2	501-5318	SHROUD GP-AIR	1	CARB SHROUD GROUP	400	150	410	700
E06-1		SHIELD, SHROUD	230	230	20	114	1	1								
E06-4		SHROUD ASSY.	390	125	405	540	1	1								
E06-2		SCREW	11	8	8	2	3	3								
E06-3		NUT	17	14	14	8	4	4								

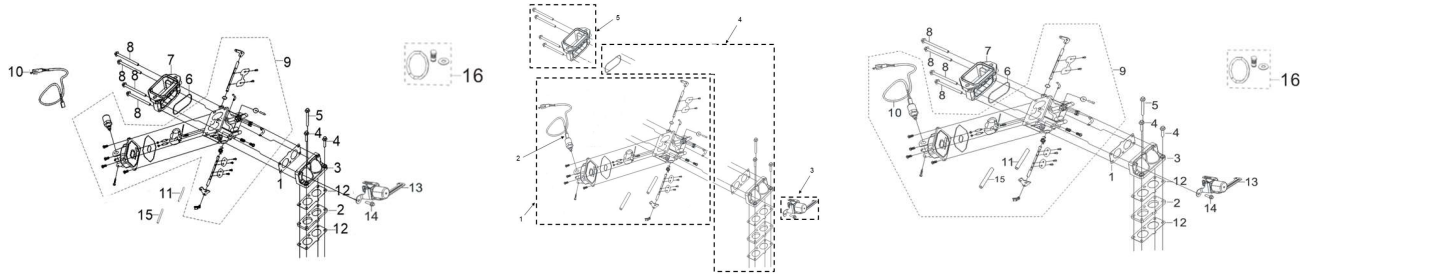
FIG.7 SHROUD, CYLINDER BODY / SHIELD,LOWER (E14)



REF.NO.	Cat Individual Part Number	DESCRIPTION	L mm	W mm	H mm	Weight (g)	QTY	Quantity per group	Cat Group Part Number	Cat Group Part Name	Quantity	Group Name	Length (mm)	Width (mm)	Height (mm)	Weight (g)								
E07-1		SHROUD 2, CYLINDER BODY	160	115	16	88.4	1	1	501-5320	SHROUD GP	1	SHROUD GROUP	680	250	350	1050								
E07-2	501-5319	IGNITION SENSOR	680	12	8	8	1	1																
E07-3		SHROUD, CYLINDER BODY	145	115	16	84.6	1	1																
E07-4		SHIELD,LOWER	172	180	120	291	1	1																
E07-6		SHIELD, CRANKCASE SIDE	210	120	20	80	1	1																
E07-7		BOLT, HEXAGONAL FLANGE SHOULDER	27	17	17	15.2	1	1																
E07-8		LUG	65	33	22	39	1	1																
E07-9		BOLT	23	16	16	16	1	1																
E07-10		RIGHT LOWER SHIELD	172	180	115	284	1	1																
E07-11		RIGHT SHIELD,CRANKCASE	210	130	20	71.2	1	1																
E07-16		PLUG, END	9	9	8	3	1	1																
E07-17		BAND	180	5	5	0.4	1	1																
E07-5		BOLT	16	12	12	5	13	13																
E07-1		SHROUD 2, CYLINDER BODY	160	115	16	88.4	1	1									501-5320	SHROUD GP	1	SHROUD GROUP	680	250	350	1050
E07-2	501-5319	IGNITION SENSOR	680	12	8	8	1	1																
E07-3		SHROUD, CYLINDER BODY	145	115	16	84.6	1	1																
E07-4		SHIELD,LOWER	172	180	120	291	1	1																
E07-6		SHIELD, CRANKCASE SIDE	210	120	20	80	1	1																
E07-7		BOLT, HEXAGONAL FLANGE SHOULDER	27	17	17	15.2	1	1																
E07-8		LUG	65	33	22	39	1	1																
E07-9		BOLT	23	16	16	16	1	1																
E07-10		RIGHT LOWER SHIELD	172	180	115	284	1	1																
E07-11		RIGHT SHIELD,CRANKCASE	210	130	20	71.2	1	1																
E07-16		PLUG, END	9	9	8	3	1	1																
E07-17		BAND	180	5	5	0.4	1	1																
E07-5		BOLT	16	12	12	5	13	13																
E07-12		TUBE, OIL FILTER INSTALLATION	60	35	35	116	1	1	501-5321	FILTER GP-OIL (A)	1	OIL FILTER GROUP	70	70	70	325								
E07-13		FILTER SUBASSEMBLY, OIL	70	70	68	207	1	1																
E07-14		GASKET	75	1	60	11	1	1	501-5322	REGULATOR GP-VOLTAGE	1	VOLTAGE REGULATOR GROUP	150	70	40	150								
E07-15		REGULATOR, VOLTAGE	150	70	25	125	1	1																
E07-18		BOLT					2	2																

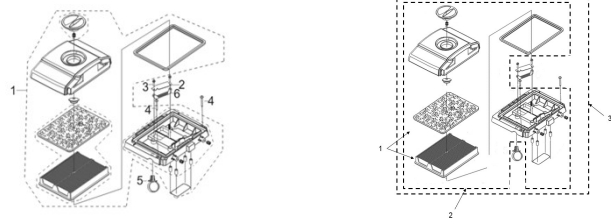


**FIG.8 CARBURETOR ASSY. (E11)**



REF.NO.	Cat Individual Part Number	DESCRIPTION	L mm	W mm	H mm	Weight (g)	Q/TY	Quantity per group	Cat Group Part Number	Cat Group Part Name	Quantity	Group Name	Length (mm)	Width (mm)	Height (mm)	Weight (g)
E08-1		GASKET, CARBURETOR	95	1	43	2	1	1	501-5325	GASKET GP	1	CARBURETOR GASKET GROUP	100	75	60	260
E08-2		GASKET, CARBURETOR INSULATOR	95	8	44	30	1	1								
E08-3		JOINT, INTAKE TUBE	100	50	50	170	1	1								
E08-5		BOLT	69	12	12	18	1	1								
E08-6		O-SHAPE WASHER	70	70	2	1.2	1	1								
E08-4		BOLT	36	14	14	10	2	2								
E08-12		GASKET, CARBURETOR	95	1	43	3	2	2	501-5326	COVER GP	1	COVER GROUP	125	101	70	236
E08-7		TUBE, AIR CLEANER CONNECTING	125	67	66	148	1	1								
E08-8		BOLT	101	13	13	22	4	4								
E08-9		CARBURETOR ASSY.	90	120	115	600	1	1	501-5446	CARBURETOR GP (BASIC)	1	CARBURETOR GROUP	200	120	120	695
E08-10	501-5324	SOLENOID VALVE HARNESS	600	9	11	22	1	1								
E08-17		SOLENOID VALVE														
E08-11		TUBE, FUEL	610	40	8.5	65	1	1								
E08-15		RUBER,PROTECTOR	120	30	1	7	1	1								
E08-9		CARBURETOR ASSY.	90	120	115	600	1	1								
E08-10	501-5324	SOLENOID VALVE HARNESS	600	9	11	22	1	1	501-5446	CARBURETOR GP (BASIC)	1	CARBURETOR GROUP	200	120	120	695
E08-17		SOLENOID VALVE														
E08-11		TUBE, FUEL	610	40	8.5	65	1	1								
E08-15		RUBER,PROTECTOR	120	30	1	7	1	1								
E08-13		AUTO CONTROL SOLENOID	180	55	80	345	1	1								
E08-14		BOLT	22	14	14	7	1	1								
E08-16	501-5387	HIGH ALTITUDE KIT 1 (3000-6000ft)	100	70	5	5	1	501-5328	SOLENOID GP-CONTROL	1	SOLENOID GROUP	180	55	80	355	
	501-5388	HIGH ALTITUDE KIT 2 (6000-8000ft)	100	70	5	5	1									

**FIG.9 CLEANER, AIR (F02)**



REF.NO.	Cat Individual Part Number	DESCRIPTION	L mm	W mm	H mm	Weight (g)	Q/TY	Quantity per group	Cat Group Part Number	Cat Group Part Name	Quantity	Group Name	Length (mm)	Width (mm)	Height (mm)	Weight (g)
E09-1	501-5330	AIR CLEANER GROUP	268	21	110	1084	1	1	501-5329	HOUSING GP-FILTER	1	AIR FILTER GROUP	270	165	120	1167
E09-2		COVER, INTAKE TUBE	110	32	13	55	1	1								
E09-5		COLLAR	49	35	6	2.4	1	1								
E09-6		COVER, INTAKE TUBE	107	29	1	8	1	1								
E09-3		BOLT	41	14	14	11	2	2								
E09-4		SCREW	27	8	8	3	2	2								
E09-7	501-5329	AIR FILTER	220	165	30	150	1	1								

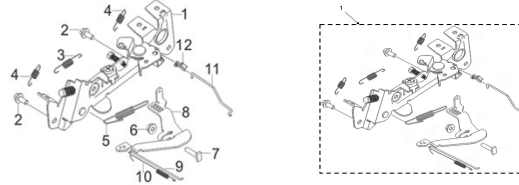


FIG.10 FLYWHEEL / IMPELLER / STARTER PULLEY / IGNITION COIL (E15)



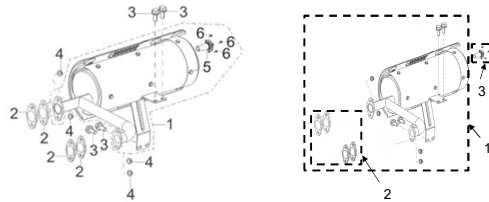
REF.NO.	Cat Individual Part Number	DESCRIPTION	L mm	W mm	H mm	Weight (g)	QTY	Quantity per group	Cat Group Part Number	Cat Group Part Name	Quantity	Group Name	Length (mm)	Width (mm)	Height (mm)	Weight (g)
E10-1		COIL, IGNITION	300	63	40	338	1	1	501-5332	COIL GP-IGNITION	1	IGNITION COIL GROUP	300	63	40	424
E10-3		BOLT	36	14	14	10	2	1								
E10-4		STUD	100	10	10	24	2	1								
E10-5		STUD	105	10	10	25.6	2	2								
E10-2		COIL, IGNITION	300	63	40	306	1	1								
E10-3		BOLT	36	14	14	10	2	1	501-5333	COIL GP-IGNITION	1	IGNITION COIL GROUP	300	63	40	340
E10-4		STUD	100	10	10	24	2	1								
E10-6		COIL SUBASSEMBLY, CHARGE	200	120	35	820	1	1								
E10-7		BOLT	41	14	14	11	6	6	501-5334	COIL GP-IGNITION	1	BATTERY CHARGER GROUP	200	120	35	886
E10-8		FLYWHEEL ASSY.	240	240	52	7300	1	1								
E10-9		WASHER	37	37	5	38	1	1	501-5335	FLYWHEEL GP	1	FLYWHEEL GROUP	240	240	100	7720
E10-10		BOLT, FLYWHEEL	46	24	24	49	1	1								
E10-11		IMPELLER	240	240	45	227	1	1								
E10-12		TRAY, IMPELLER SETTING	95	95	1.5	70	1	1								
E10-13		BOLT	24	15	15	12	3	3								
E10-15		MOTOR ASSY, STARTING	210	160	120	3477	1	1	501-5336	MOTOR GP-ELECTRIC STARTING	1	STARTER GROUP	215	175	125	3525
E10-14		PIN	14	10	10	2	2	2								
E10-16		BOLT	118	17	17	22	2	2								
E10-17		PROTECTOR, OIL	300	25	30	39	1	1								
E10-18		BOLT	16	12	12	5	1	1	501-5337	COVER GP	1	OIL PROTECTOR GROUP	300	25	30	45

**FIG.11 CONTROL ASSY, THROTTLE (E13)**



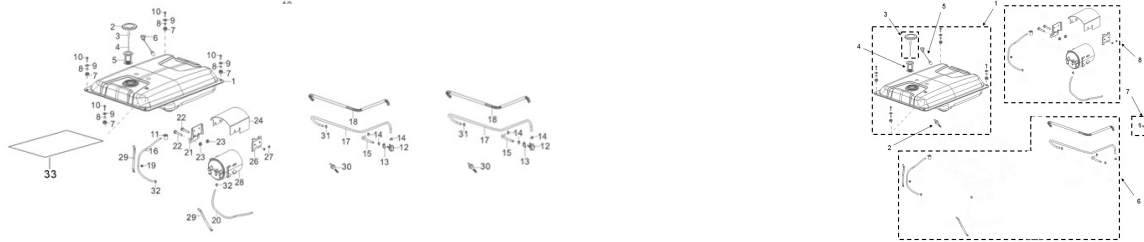
REF.NO.	Cat Individual Part Number	DESCRIPTION	L mm	W mm	H mm	Weight (g)	QTY	Quantity per group	Cat Group Part Number	Cat Group Part Name	Quantity	Group Name	Length (mm)	Width (mm)	Height (mm)	Weight (g)
E11-1		CONTROL ASSY, THROTTLE	210	72	75	280	1	1	501-5338	GOVERNOR GP	1	GOVERNOR GROUP	215	205	75	423
E11-3		SPRING, GOVERNOR	53	9	9	2	1	1								
E11-5		SPRING, GOVERNOR	95	20	11	7	1	1								
E11-6		NUT	12	12	5	3.8	1	1								
E11-7		BOLT, GOVERNOR SUPPORT	24	13	7	4	1	1								
E11-8		SUPPORT SUBASSEMBLY, GOVERNOR	100	130	45	96	1	1								
E11-9		ROD, GOVERNEOR	125	9	11	8	1	1								
E11-10		SPRING, THROTTLE VALVE RETURNING	86	13	9	2	1	1								
E11-11		ROD, CHOKE	85	10	23	3	1	1								
E11-12		CLIP, CHOKE ROD	15	8	13	1	1	1								
E11-2		BOLT	22	14	14	7	2	2								
E11-4		SPRING, CHOKE RETURN	26	9	9	1	2	2								
E11-1		CONTROL ASSY, THROTTLE	210	72	75	280	1	1	501-5338	GOVERNOR GP	1	GOVERNOR GROUP	215	205	75	423
E11-3		SPRING, GOVERNOR	53	9	9	2	1	1								
E11-5		SPRING, GOVERNOR	95	20	11	7	1	1								
E11-6		NUT	12	12	5	3.8	1	1								
E11-7		BOLT, GOVERNOR SUPPORT	24	13	7	4	1	1								
E11-8		SUPPORT SUBASSEMBLY, GOVERNOR	100	130	45	96	1	1								
E11-9		ROD, GOVERNEOR	125	9	11	8	1	1								
E11-10		SPRING, THROTTLE VALVE RETURNING	86	13	9	2	1	1								
E11-11		ROD, CHOKE	85	10	23	3	1	1								
E11-12		CLIP, CHOKE ROD	15	8	13	1	1	1								
E11-2		BOLT	22	14	14	7	2	2								
E11-4		SPRING, CHOKE RETURN	26	9	9	1	2	2								

**FIG.12 MUFFLER ASSY. (E12)**



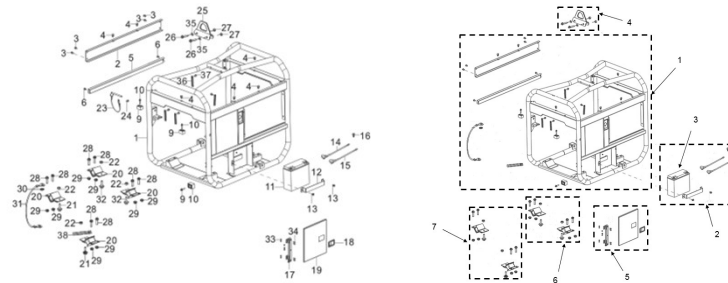
REF.NO.	Cat Individual Part Number	DESCRIPTION	L mm	W mm	H mm	Weight (g)	QTY	Quantity per group	Cat Group Part Number	Cat Group Part Name	Quantity	Group Name	Length (mm)	Width (mm)	Height (mm)	Weight (g)
E12-1		MUFFLER ASSY.	510	425	355	5400	1	1	501-5340	MUFFLER GP	1	MUFFLER GROUP	510	425	355	5522
E12-2	501-5339	EXHAUST GASKET	67	1	40	3	4	4								
E12-3		BOLT	25	18	18	12	4	4								
E12-4		NUT	25	18	18	15	4	4								
E12-5		SPARK ARRESTOR	52	43	25	34	1	1	501-5341	ARRESTOR GP-SPARK	1	SPARK ARRESTOR GROUP	52	43	25	50
E12-6		BOLT	5	5	10	5	3	3								

FIG.13 TANK, FUEL (E13)



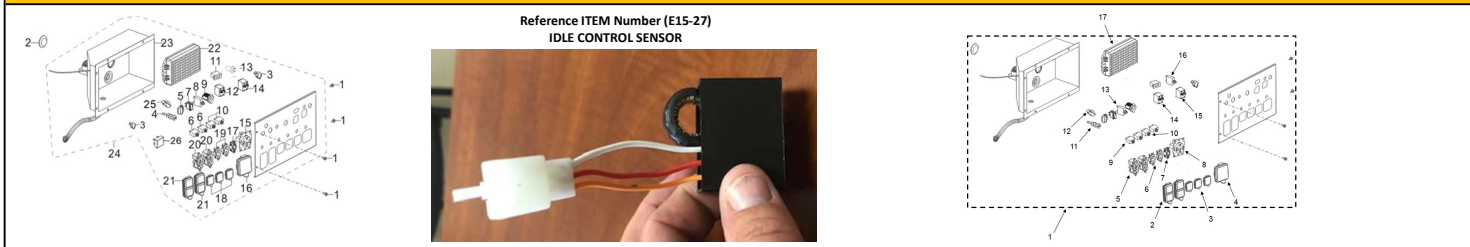
REF.NO.	Cat Individual Part Number	DESCRIPTION	L mm	W mm	H mm	Weight (g)	QTY	Quantity per group	Cat Group Part Number	Cat Group Part Name	Quantity	Group Name	Length (mm)	Width (mm)	Height (mm)	Weight (g)
E13-2		COVER, FUEL TANK	95	95	54	190	1	1								
E13-3		CLIP, FUEL TANK CAP CHAIN	10	10	1	0.172	1	1	501-5345	CAP GP-FUEL	1	FUEL CAP GROUP	95	95	58	196
E13-4		CHAIN, FUEL TANK CAP	65	10	4	5	1	1								
E13-1		FUEL TANK	750	585	200	8200	1	1								
E13-2		COVER, FUEL TANK	95	95	54	190	1	1								
E13-3		CLIP, FUEL TANK CAP CHAIN	10	10	1	0.172	1	1								
E13-4		CHAIN, FUEL TANK CAP	65	10	4	5	1	1								
E13-5	501-5342	FUEL STRAINER	57	57	50	7	1	1	501-5346	TANK GP-FUEL (B)	1	FUEL TANK GROUP	750	585	200	8675
E13-6	501-5344	FUEL LEVEL GAUGE	33	33	200	18	1	1								
E13-30	501-5343	FUEL FILTER	58	19	19	6	1	1								
E13-7		RUBBER SLEEVE, FUEL TANK	25	25	12	6	4	4								
E13-8		SLEEVE	14	12	14	19	4	4								
E13-9		WASHER	25	2	25	27.4	4	4								
E13-10		BOLT	31	14	14	8.4	4	4								
E13-12		FUEL VALVE	57	31	26	8	1	1	501-5347	VALVE GP-FUEL	1	FUEL VALVE GROUP	57	31	51	12
E13-13		FUEL VALVE BASEMENT	42	25	42	4	1	1								
E13-11		ROLLOVER VALVE	53	40	38	25	1	1								
E13-15		FUEL TUBE	70	45	10	7	1	1								
E13-16		RUBBER,FUEL VAPOR	720	35	10	22	1	1								
E13-17		TUBE, FUEL	110	90	10	14	1	1	501-5348	LINES GP-FUEL	1	ROLLOVER VALVE GROUP	850	90	40	131
E13-18		CORRUGATED PIPE	55	15	15	3	1	1								
E13-19		RUBBER PROTECTIVE SLEEVE	16	16	10	0.2	1	1								
E13-31		CLAMP	19	8	19	2	1	1								
E13-29		CORRUGATED PIPE	850	20	20	23	2	2								
E13-32		CLAMP	25	10	17	2	2	2								
E13-14		CLAMP	17	8	15	2	3	3								
E13-11		ROLLOVER VALVE	53	40	38	25	1	1								
E13-16		RUBBER,FUEL VAPOR	720	35	10	22	1	1								
E13-19		RUBBER PROTECTIVE SLEEVE	16	16	10	0.2	1	1								
E13-20		RUBBER,FUEL VAPOR	1215	35	10	64.2	1	1								
E13-21		MOUNTING PLATE,FUEL VAPOR COLLECTOR	90	85	20	169	1	1	501-5349	DISPOSAL GP-FUMES (A)	1	FUMES DISPOSAL GROUP	1215	155	120	1758
E13-24		COVER,FUEL VAPOR COLLECTOR	148	155	90	426	1	1								
E13-26		MOUNTING BRACKET	70	70	20	82	1	1								
E13-28		FUEL VAPOR COLLECTOR	172	155	120	830	1	1								
E13-27		NUT	12	12	5	3	2	2								
E13-32		CLAMP	25	10	17	2	2	2								
E13-22		BOLT	57	15	15	24	4	4								
E13-23		NUT	16	16	9	8	4	4								
E13-11		ROLLOVER VALVE	53	40	38	25	1	1								
E13-15		FUEL TUBE	70	45	10	7	1	1								
E13-16		RUBBER,FUEL VAPOR	720	35	10	22	1	1								
E13-17		TUBE, FUEL	110	90	10	14	1	1	501-5350	LINES GP-FUEL	1	CARB ROLLOVER VALVE GROUP	850	90	40	131
E13-18		CORRUGATED PIPE	55	15	15	3	1	1								
E13-19		RUBBER PROTECTIVE SLEEVE	16	16	10	0.2	1	1								
E13-31		CLAMP	19	8	19	2	1	1								
E13-29		CORRUGATED PIPE	850	20	20	23	2	2								
E13-32		CLAMP	25	10	17	2	2	2								
E13-14		CLAMP	17	8	15	2	3	3								
E13-33	501-5445	HEAT SHIELD														

FIG.14 FRAME, ENGINE (E14)



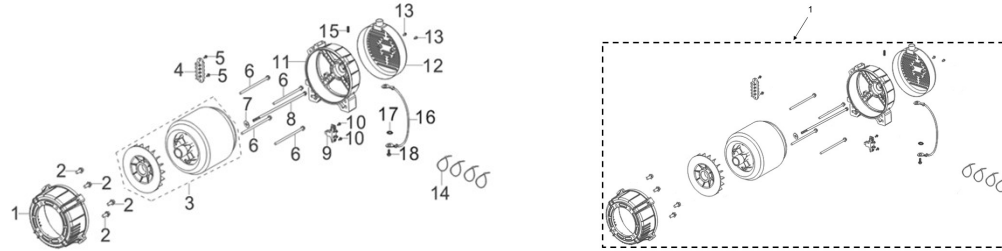
REF.NO.	Cat Individual Part Number	DESCRIPTION	L mm	W mm	H mm	Weight (g)	QTY	Quantity per group	Cat Group Part Number	Cat Group Part Name	Quantity	Group Name	Length (mm)	Width (mm)	Height (mm)	Weight (g)
E14-1		FRAME	830/840	620/635	735	2280	1	1	501-5351	FRAME GP	1	FRAME GROUP	840	635	735	4783
E14-2		CROSS RAIL, FRAME	750	82	27	1296	1	1								
E14-5		CROSS RAIL LOWER, FRAME	750	20	30	966	1	1								
E14-30		LOCK WASHER	15	15	1	0.2	1	1								
E14-31		GROUNDING WIRE	205	12	12	36	1	1								
E14-38		CLIP	50	35	7	3	1	1								
E14-6		BOLT	19	14	14	7	2	2								
E14-3		BOLT	19	14	14	7	3	3								
E14-9		RUBBER, HANDLE PROTECT	34	25	25	22	3	3								
E14-10		BOLT	25	18	18	12	3	3								
E14-36		CLIP	113	18	2	6	4	4								
E14-37		BOLT	19	14	14	7	4	4								
E14-4		RUBBER, FUEL TANK	18	14	10	2	6	6								
E14-11	501-5395	BATTERY	180	75	165	5000	1	1								
E14-12		PRESS PLATE, BATTERY	225	32	35	110	1	1								
E14-14		POSITIVE WIRE	455	20	35	73	1	1								
E14-15		NEGATIVE WIRE	435	20	20	59	1	1								
E14-16		BOLT	19	14	14	7	1	1								
E14-13		BOLT	19	14	14	7	2	2								
E14-17		HINGE	175	23	20	103	1	1								
E14-18		LOCK	85	40	60	20	1	1								
E14-19		SERVICE DOOR	255	16	215	700	1	1	501-5353	DOOR GP	1	DOOR GROUP	255	50	215	848
E14-34		BOLT	12	7	7	1.2	4	4								
E14-33		NUT	9	9	4	2.8	7	7								
E14-20		ISOLATOR	115	75	80	320	4	2								
E14-22		NUT	16	16	9	9	4	2	501-5354	MOUNTING GP-ISOLATOR	1	ISOLATOR GROUP	115	150	115	770
E14-32		BOLT	35	19	19	20	2	2								
E14-28		BOLT	25	18	18	12	8	4								
E14-29		NUT	17	17	8	6	8	4								
E14-25		LIFTING EYE	160	40	105	512	1	1	501-5355	LIFTING GP	1	LIFTING GROUP	160	50	105	620
E14-26		BOLT	62	18	18	42	2	2								
E14-27		NUT	18	18	10	8	2	2								
E14-35		PLAIN WASHER	20	20	2	3	2	2								
E14-20		ISOLATOR	115	75	80	320	4	2	501-5356	MOUNTING GP-ISOLATOR	1	ISOLATOR GROUP	115	150	115	810
E14-22		NUT	16	16	9	9	4	2								
E14-21		BOLT	54	21	21	40	2	2								
E14-28		BOLT	25	18	18	12	8	4								
E14-29		NUT	17	17	8	6	8	4								
E14-1		FRAME	830/840	620/635	735	2280	1	1	501-5357	FRAME GP	1	CARB FRAME GROUP	840	635	735	4783
E14-2		CROSS RAIL, FRAME	750	82	27	1296	1	1								
E14-5		CROSS RAIL LOWER, FRAME	750	20	30	966	1	1								
E14-30		LOCK WASHER	15	15	1	0.2	1	1								
E14-31		GROUNDING WIRE	205	12	12	36	1	1								
E14-38		CLIP	50	35	7	3	1	1								
E14-6		BOLT	19	14	14	7	2	2								
E14-3		BOLT	19	14	14	7	3	3								
E14-9		RUBBER, HANDLE PROTECT	34	25	25	22	3	3								
E14-10		BOLT	25	18	18	12	3	3								
E14-36		CLIP	113	18	2	6	4	4								
E14-37		BOLT	19	14	14	7	4	4								
E14-4		RUBBER, FUEL TANK	18	14	10	2	6	6								
E14-23		LOCK PIN	345	24	8	51	1	1								
E14-24		BOLT	19	14	14	7	1	1								

**FIG.15 PANEL SUBASSEMBLY, CONTROL (E15)**



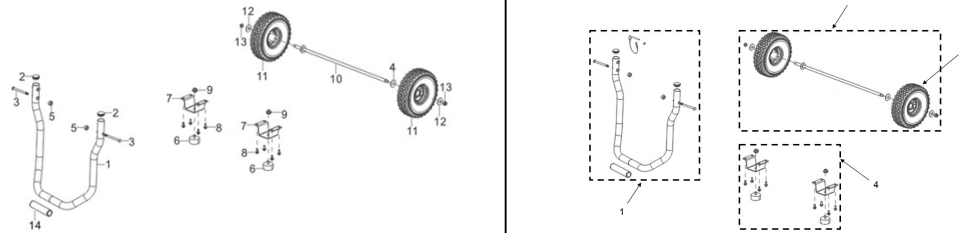
REF.NO.	Cat Individual Part Number	DESCRIPTION	L mm	W mm	H mm	Weight (g)	QTY	Quantity per group	Cat Group Part Number	Cat Group Part Name	Quantity	Group Name	Length (mm)	Width (mm)	Height (mm)	Weight (g)
E15-2		HOLE COVER	47	47	7	9	1	1	501-5374	PANEL GP-CONTROL (BASIC)	1	CONTROL PANEL GROUP	420	225	275	6500
E15-24		CONTROL PANEL ASSY	420	215	265	6300	1									
E15-1		BOLT	19	13	13	5	4	4								
E15-3	501-5358	PANEL LIGHT	145	23.9	26	13	2									
E15-4	501-5359	CHOKE CONTROL	36	19.3	19.3	31.5	1									
E15-5	501-5458	ON/OFF SWITCH	40.4	40.4	78	75.5	1									
E15-6	501-5360	20A CIRCUIT BREAKER	35	14.5	58.3	26.5	2									
E15-7		SWITCH, AUTO IDLE CONTROL	34	13.4	37	7	1									
E15-8	501-5361	DC CIRCUIT BREAKER	29.4	14.5	46.6	13	1									
E15-9		CIGAR LIGHTER	55.4	36.6	36.6	38.5	1									
E15-10	501-5362	30A CIRCUIT BREAKER	35	14.5	58.3	26.5	2									
E15-11		TIMER	56.3	28.8	36.3	32.5	1									
E15-12	501-5363	DOUBLE POLE CIRCUIT BREAKER	51	37.3	67	109	1									
E15-13	501-5364	BATTERY CHARGER PORT	12.6	12.6	27.3	6	1									
E15-14	501-5365	DOUBLE POLE CIRCUIT BREAKER	63.5	37.5	80	146.5	1									
E15-15	501-5366	240VAC LOCKING OUTLET	95.5	64.2	53.4	163.5	1									
E15-16	501-5367	RAIN COVER	78	65	16.1	25.5	1									
E15-17	501-5368	240VAC LOCKING OUTLET	93.1	42.7	32	99.5	1									
E15-18	501-5369	RAIN COVER	64.5	50.5	14.1	13.5	3									
E15-19	501-5370	120VAC LOCKING OUTLET	93.1	42.7	32	87	2									
E15-20	501-5371	120VAC GFCI	91.7	40.8	38.7	91	2									
E15-21	501-5372	DUPLEX RAIN COVER	94.1	47.1	18	19.5	2									
E15-22	501-5373	VOLTAGE REGULATOR	243	124	42.7	1012.5	1									
E15-23		BACK COVER, CONTROL PANEL	401.5	247	144	1580.5	1									
E15-25	501-5455	ON / OFF KNOB	50	50	40	15	1									
E15-26		RECTIFIER BRIDGE					1									
E15-27	20000-24934	IDLE CONTROL SENSOR					1									

FIG.16 ROTOR/STATOR (E16)



REF.NO.	Cat Individual Part Number	DESCRIPTION	L mm	W mm	H mm	Weight (g)	Q'TY	Quantity per group	Cat Group Part Number	Cat Group Part Name	Quantity	Group Name	Length (mm)	Width (mm)	Height (mm)	Weight (g)
E16-1		CONNECTING COVER	275	275	115	1550	1	1								
E16-3		ALTERNATOR	/	/	/	/	1	1								
E16-3		STATOR	380	345	355	28700	1	1								
E16-3		ROTOR	375	345	355	16100	1	1								
E16-4		PLATE, WIRING.	106	35	25	81	1	1								
E16-7		WASHER	30	30	4	18	1	1								
E16-8		BOLT	272	22	22	167	1	1								
E16-9		BRUSH, CARBON	66	26	55	65	1	1								
E16-11		SUPPORT, ALTERNATOR	245	105	245	1690	1	1								
E16-12		TAILER, ALTERNATOR	235	235	57	400	1	1	501-5375	ALTERNATOR GP	1	ALTERNATOR	1135	360	370	49200
E16-15		SCREW	12	6	6	1.6	1	1								
E16-16		GROUNDING WIRE	200	12	12	21	1	1								
E16-17		LOCK WASHER	15	15	1	0.2	1	2								
E16-18		BOLT	25	18	18	12	1	2								
E16-5		BOLT	17	11	11	3	2	2								
E16-10		BOLT	17	11	11	3	2	4								
E16-13		BOLT	22	11	11	4	2	4								
E16-2		BOLT	34	17	17	20	4	4								
E16-6		BOLT	77	18	18	70	4									
E16-14		BAND	190	3.5	3.5	1	4									
E16-1		CONNECTING COVER	275	275	115	1550	1	1								
E16-3		ALTERNATOR	/	/	/	/	1	1								
E16-3		STATOR	380	345	355	28700	1	1								
E16-3		ROTOR	375	345	355	16100	1	1								
E16-4		PLATE, WIRING.	106	35	25	81	1	1								
E16-7		WASHER	30	30	4	18	1	1								
E16-8		BOLT	272	22	22	167	1	1								
E16-9		BRUSH, CARBON	66	26	55	65	1	1								
E16-11		SUPPORT, ALTERNATOR	245	105	245	1690	1	1								
E16-12		TAILER, ALTERNATOR	235	235	57	400	1	1	501-5375	ALTERNATOR GP	1	ALTERNATOR	1135	360	370	49200
E16-15		SCREW	12	6	6	1.6	1	1								
E16-16		GROUNDING WIRE	200	12	12	21	1	1								
E16-17		LOCK WASHER	15	15	1	0.2	1	2								
E16-18		BOLT	25	18	18	12	1	2								
E16-5		BOLT	17	11	11	3	2	2								
E16-10		BOLT	17	11	11	3	2	4								
E16-13		BOLT	22	11	11	4	2	4								
E16-2		BOLT	34	17	17	20	4	4								
E16-6		BOLT	77	18	18	70	4									
E16-14		BAND	190	3.5	3.5	1	4									
E16-9		BRUSH, CARBON	66	26	55	65	1	1	501-5408	BRUSH GP	1	CARBON BRUSH GROUP	85	26	55	71
E16-10		BOLT	17	11	11	3	2	2								

**FIG.17 HANDLE/WHEEL ASSY,FRONT (E17)**

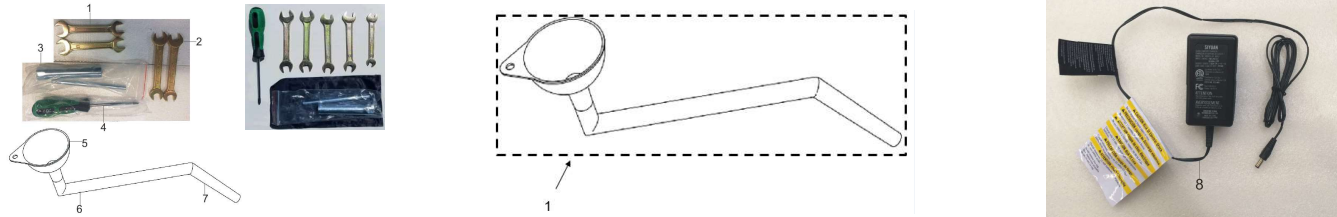


REF.NO.	Cat Individual Part Number	DESCRIPTION	L mm	W mm	H mm	Weight (g)	QTY	Quantity per group	Cat Group Part Number	Cat Group Part Name	Quantity	Group Name	Length (mm)	Width (mm)	Height (mm)	Weight (g)
E17-1		HANDLE TUBE	530	140	500	1870	1	1								
E17-14		HANDLE FOAM	210	40	40	16	1	1								
E14-23		LOCK PIN	345	24	8	51	1	1								
E14-24		BOLT	19	14	14	7	1	1	501-5377	HANDHOLD GP	1	HANDLE GROUP	540	150	525	2050
E17-2		CAP, HANDLE TUBE	31	31	11	4	2	2								
E17-3		T-SHAPE BOLT	97	14	13	33	2	2								
E17-5		NUT, LOCK	17	17	10	7	2	2								
E17-6		FOOT, FRAME	61	61	48	140	2	2								
E17-7		FOOT BRACKET, FRAME	145	80	62	500	2	2	501-5378	SUPPORT GP-FRAME	1	FRAME SUPPORT GROUP	145	170	75	1400
E17-9		NUT	20	20	10	11	2	2								
E17-8		BOLT	24	15	15	12	8	8								
E17-4		PLATE, WHEEL STOPPER	50	50	4	50	1	1								
E17-10		AXLE	785	50	50	1250	1	1								
E17-11	501-5376	WHEEL	290	290	96	2850	2	2	501-5379	WHEEL GP-TIRE&	1	WHEEL GROUP	290	290	785	7040
E17-11	501-5376	WHEEL	290	290	96	2850	2	2								
E17-12		WASHER	24	24	1	3.6	2	2								
E17-13		NUT, LOCK	23	23	12	16	2	2								

**FULL ENGINE ASSEMBLY**

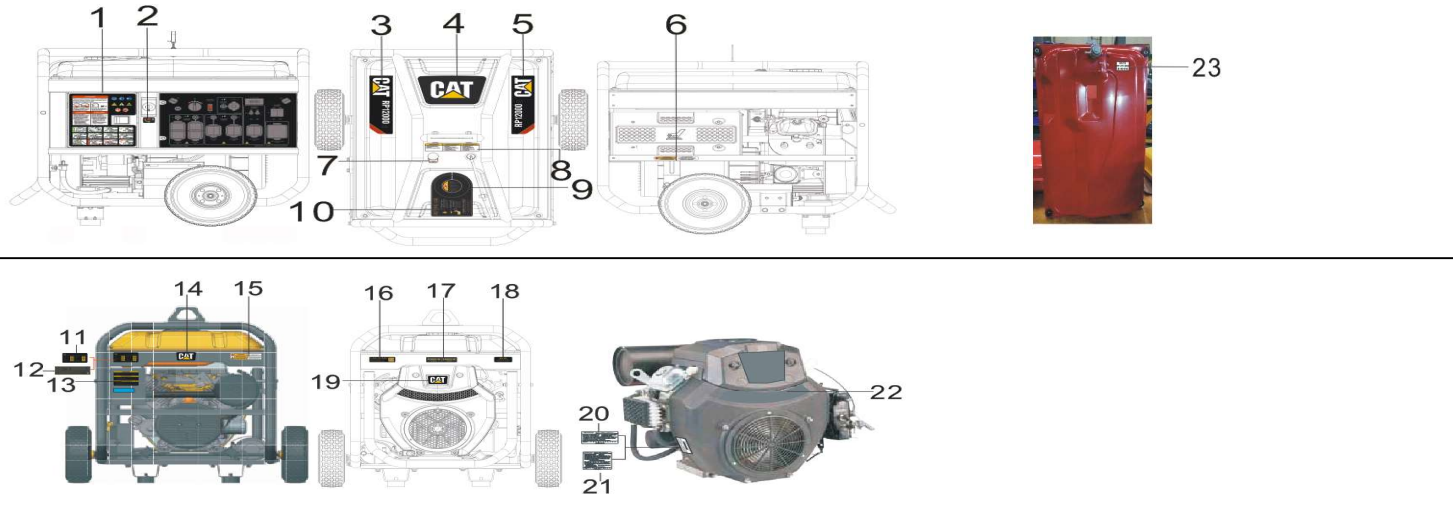
REF.NO.	Cat Individual Part Number	DESCRIPTION	L mm	W mm	H mm	Weight (g)	QTY	Quantity per group	Cat Group Part Number	Cat Group Part Name	Quantity	Group Name	Length (mm)	Width (mm)	Height (mm)	Weight (g)
1	530-1254	ENGINE ASSEMBLY R670 EPA	457	351	460	45000	1									
1	530-1258	ENGINE ASSEMBLY R670 CARB	457	351	460	45000	1									

**FIG.18 TOOL KIT**



REF.NO.	Cat Individual Part Number	DESCRIPTION	L mm	W mm	H mm	Weight (g)	QTY	Quantity per group	Cat Group Part Number	Cat Group Part Name	Quantity	Group Name	Length (mm)	Width (mm)	Height (mm)	Weight (g)
E18-1		SPANNER, DOUBLE ENDED 14-17	132	30	6	66	2	2								
E18-2		SPANNER, DOUBLE ENDED 13-15	135	33	6	68	2	2								
E18-9		SPANNER, DOUBLE ENDED 8-10	120	28	6	50	1	1								
E18-3		SPARK PLUG WRENCH	150	24	24	137	1	1	501-5448	TOOL GP	1	TOOL GROUP	230	120	40	560
E18-4		SCREW-DRIVER PHILLIPS HEAD	210	33	33	85	1	1								
E18-10		TOOL KIT BAG	230	120	20	20	1	1								
E18-5							1									
E18-6		OIL FILL FUNNEL	350	80	250	55	1	1	501-5380	FUNNEL GP	1	FUNNEL GROUP	350	80	250	55
E18-7							1									
E18-8	501-5412	BATTERY CHARGER	130	65	65	200	1									

FIG.21 DECALS (E00)



REF.NO.	Cat Individual Part Number	DESCRIPTION	L mm	W mm	H mm	Weight (g)	QTY	Quantity per group	Cat Group Part Number	Cat Group Part Name	Quantity	Group Name	Length (mm)	Width (mm)	Height (mm)	Weight (g)
E00-1		LABEL, GENERAL WARNING	201	243			1	1								
E00-6		LABEL HOT SURFACE	135	17			1	1								
E00-8		LABEL FUEL ADD WARNING	167	37			1	1	501-5381	FILM GP (SAFETY)	1	SAFETY FILMS	280	202	8	8
E00-9		LABEL FUEL SPEC	64	64			1	1								
E00-13		LABEL CP65	85	70			1	1								
E00-15		LABEL HIGH TEMP	110	33			1	1								
E00-22		LABEL GRILLING	276	61			1	1								
E00-2		LABEL FUEL VALVE	36	25			1	1								
E00-7		LABEL FUEL GAUGE	22	29			1	1								
E00-10		HANGTAG	202	125			1	1	501-5382	FILM GP (INFORMATION)	1	INFORMATION FILMS	202	125	8	8
E00-11		LABEL SPEC	85	47			1	1								
E00-16		LABEL SERVICE INFO	87	25			1	1								
E00-17		LABEL OUTPUT	105	25			1	1								
E00-18		LABEL WEIGHT	60	25			1	1								
E00-3		LABEL MODEL LEFT	269	69			1	1								
E00-4		LABEL TRADEMARK	208	132			1	1								
E00-5		LABEL MODEL LEFT	269	69			1	1	501-5383	FILM GP (BRAND)	1	BRAND FILMS	269	132	6	6
E00-14		LABEL CAT LOGO	67	41			1	1								
E00-19		LABEL CAT LOGO	67	41			1	1								
E00-2		LABEL FUEL VALVE	36	25			1	1								
E00-7		LABEL FUEL GAUGE	22	29			1	1								
E00-10		HANGTAG	202	125			1	1	501-5384	FILM GP (INFORMATION)	1	CARB INFORMATION FILMS	202	125	8	8
E00-11		LABEL SPEC	85	47			1	1								
E00-16		LABEL SERVICE INFO	87	25			1	1								
E00-17		LABEL OUTPUT	105	25			1	1								
E00-18		LABEL WEIGHT	60	25			1	1								
E00-2		LABEL FUEL VALVE	36	25			1	1								
E00-7		LABEL FUEL GAUGE	22	29			1	1								
E00-10		HANGTAG	202	125			1	1	501-5385	FILM GP (INFORMATION)	1	CSA INFORMATION FILMS	202	125	8	8
E00-12		LABEL CSA RATING	87	25			1	1								
E00-16		LABEL SERVICE INFO	87	25			1	1								
E00-17		LABEL OUTPUT	105	25			1	1								
E00-18		LABEL WEIGHT	60	25			1	1								
E00-20		LABEL EPA EMISSION	29	60			1	1								
E00-21		LABEL CARB EMISSION	52	58			1	1								
E00-22		LABEL GRILLING	276	61			1	1								
E00-23		LABEL FUEL TANK CERTIFICATE	30	20			1	1								

Last Updated 2-27-23