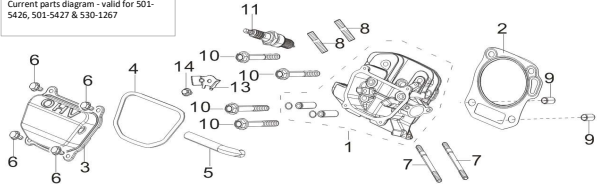


EPA Version RP8500E

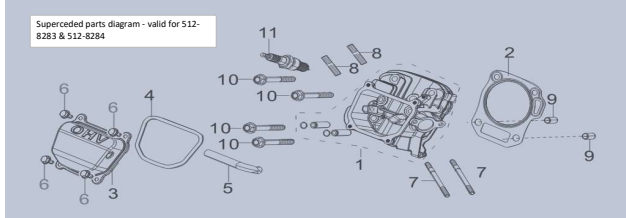
Important information

The service parts list information provided within the Parts Diagram document is all inclusive of the service parts which are presently available for the defined model. Not all individual parts are serviceable at the piece part level. If an itemized part does not have a defined corresponding service part listed, the defined group level service part must be ordered.

Current parts diagram - valid for 501-5426, 501-5427 & 530-1267

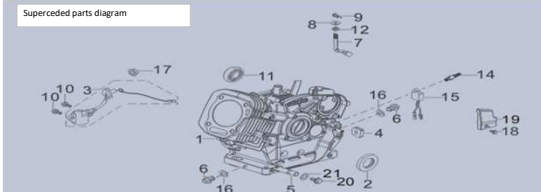
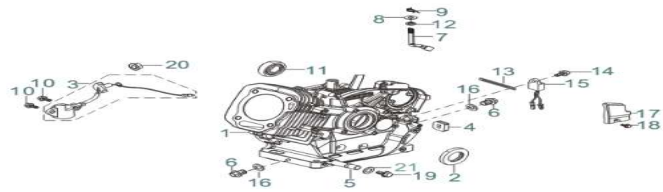


Superseded parts diagram - valid for 512-8283 & 512-8284



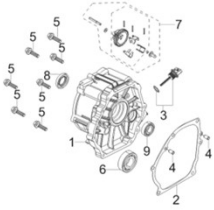
CYLINDER ASSY.

REF.NO.	Description	CAT Part Number	Group QTY	L mm	W mm	H mm	Weight kg	Model	CAT Group Part Number	Group Name	L mm	W mm	H mm	Weight kg
3	COVER SUBASSEMBLY, CYLINDER HEAD		1	140	41	115	259.2	RP8000E	501-5426	COVER GP-CYL HD	140	115	60	0.3518
4	GASKET, CYLINDER HEAD COVER	501-5425	1	135	112	3	4.6	RP8000E						
6	BOLT		4	19	16	16	208	RP8000E						
5	TUBE, BREATHER	511-8860	1	125	17	15	16.6	RP8000E						
1	HEAD SUBASSEMBLY, CYLINDER		1	200	200	100	1720	RP8000E	530-1267	HEAD GP-CYL BSC	200	200	140	2.0523
2	GASKET, CYLINDER HEAD	511-7251	1	140	130	2	16.5	RP8000E						
7	STUD		2	34	8	8	10	RP8000E						
8	STUD		2	112	9	9	30.4	RP8000E						
9	PIN		2	20	13	13	4.5	RP8000E						
10	BOLT, CYLINDER HEAD		4	190	20	20	51.5	RP8000E						
11	PLUG, SPARK	511-7297	1	185	20	20	60	RP8000E						
12	GASKET, CYLINDER HEAD COVER		1	140	41	115	259.2	RP8000E						
13	RETAINER		1					RP8000E	530-1256	RETAINER GP	40	40	40	0.200
14	BOLT		1					RP8000E						



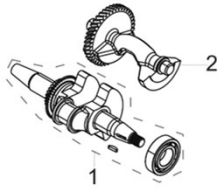
**RP8000E CRANKCASE ASSY.**

REF.NO.	Description	CAT Part Number	Group QTY	L mm	W mm	H mm	Weight g	Model	CAT Group Part Number	Group Name	L mm	W mm	H mm	Weight kg
3	SENSOR, ENGINE OIL		1	110	50	50	45	RP8000E						
10	BOLT		2	15	15	15	5.5	RP8000E	512-8285	SENSOR GP-LEVEL	110	50	70	0.0638
20	NUT		1	127	90	58	41.6	RP8000E						
7	ARM, GOVERNOR		1	115	50	50	37.8	RP8000E						
8	WASHER, FLAT		1	12	12	1	1.6	RP8000E						
9	COTTER		1	20	8	2	0.6	RP8000E	512-8286	LEVER GP-CAL	115	50	60	0.0408
12	SEAL, OIL		1	16	16	5	0.8	RP8000E						
2	SEAL, OIL		1	55	55	8	15	RP8000E	501-5442	BEARING GP -B	55	55	25	0.055
11	BEARING, DEEP GROOVE BALL		1	40	40	13	40	RP8000E						
1	CRANKCASE SUBASSEMBLY		1	370	280	190	5000	RP8000E						
4	PLUG, RUBBER		1	25	20	8	3.2	RP8000E						
5	DRAIN PIPE		1	50	14	14	30	RP8000E						
6	BOLT, DRAIN PLUG		3	23	18	7	3	RP8000E	512-8288	CRANKCASE GP	370	280	220	5.0754
13	CLIP		1	100	12	2	5	RP8000E						
16	WASHER, FLAT		2	23	21	2	1	RP8000E						
19	Drain Bolt	501-5404	1	19	19	9	8	RP8000E						
21	WASHER, FLAT		1	16	16	1.5	0.4	RP8000E						
17	WIRE PROTECT COVER		1	23	18	7	3	RP8000E						
15	PROTECTOR, OIL		1	50	30	20	22	RP8000E	512-8289	COVER GP	127	90	90	0.1208
18	BOLT		1	31	14	14	8.8	RP8000E						
14	BOLT		1	19	16	16	208	RP8000E						



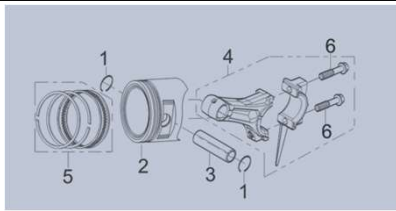
**CRANKCASE COVER**

REF.NO.	Description	CAT Part Number	Group QTY	L mm	W mm	H mm	Weight g	Model	CAT Group Part Number	Group Name	L mm	W mm	H mm	Weight kg
1	COVER, CRANKCASE		1	270	240	114	1580	RP8000E	512-8290	COVER GP-REAR	270	240	130	1.7275
2	GASKET, CRANKCASE	511-7243	1	270	215	1	4.5	RP8000E						
4	PIN		2	11	7	7	1.5	RP8000E						
5	BOLT		7	50	18	18	20	RP8000E						
6	BEARING, DEEP GROOVE BALL		1	80	80	20	280	RP8000E	501-5443	BEARING GP -B	80	80	50	0.335
8	SEAL, OIL		1	55	55	8	15	RP8000E						
9	BEARING, DEEP GROOVE BALL		1	40	40	13	40	RP8000E						
3	DIPSTICK SUBASSEMBLY, OIL	501-5087	1	86	37	31	20	RP8000E						
7	GEAR ASSY, GOVERNOR	511-8847	1	65	60	60	62.8	RP8000E						



**CRANKSHAFT ASSY.**

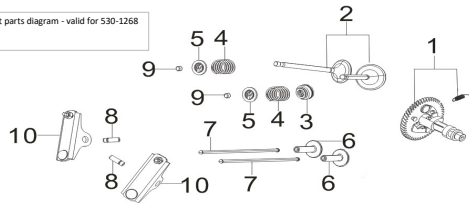
REF.NO.	Description	CAT Part Number	Group QTY	L mm	W mm	H mm	Weight g	Model	CAT Group Part Number	Group Name	L mm	W mm	H mm	Weight kg
1	CRANKSHAFT ASSY.		1	300	110	115	3860	RP8000E	512-8292	CRANKSHAFT GP	300	115	200	4.62
2	SHAFT ASSY, BALANCING		1	140	90	90	760	RP8000E						



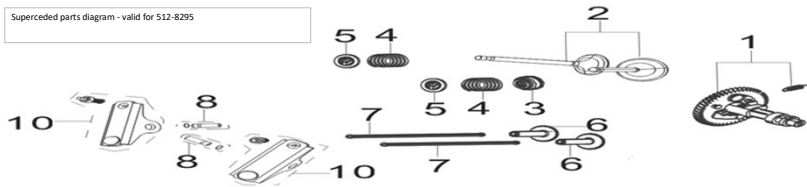
**PISTON/CONNECTING ROD**

REF.NO.	Description	CAT Part Number	Group QTY	L mm	W mm	H mm	Weight g	Model	CAT Group Part Number	Group Name	L mm	W mm	H mm	Weight kg
5	PISTON RINGS SET	511-7264	1	95	95	3	20	RP8000E						
1	CLIP, PISTON PIN		2	25	25	1	0.4	RP8000E						
2	PISTON		1	65	25	25	39	RP8000E	512-8293	PISTON GP	100	100	100	0.3518
3	PIN, PISTON		1	100	100	70	312	RP8000E						
4	ROD, CONNECTING		1	170	160	30	260	RP8000E	512-8294	ROD GP-CONN	170	160	45	0.293
6	BOLT, CONNECTING ROD		2	44	15	15	16.5	RP8000E						

Current parts diagram - valid for 530-1268

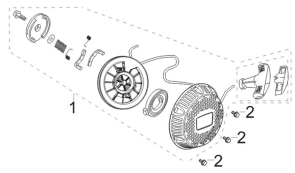


Superceded parts diagram - valid for 512-8295



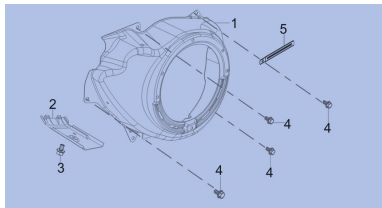
**CAMSHAFT ASSY.**

REF.NO.	Description	CAT Part Number	Group QTY	L mm	W mm	H mm	Weight g	Model	CAT Group Part Number	Group Name	L mm	W mm	H mm	Weight kg
1	CAMSHAFT ASSY.		1	125	120	120	835	RP8000E						
2	VALVES SET		1	95	35	35	75	RP8000E						
3	GUIDE SEAL		1	10	10	8	0.8	RP8000E						
4	SPRING, VALVE		2	40	25	25	14	RP8000E						
5	SEAT, VALVE SPRING		2	22	25	5	5	RP8000E						
6	TAPPET, VALVE		2	50	30	30	29	RP8000E	530-1268	CAMSHAFT GP	192	120	180	1.2628
7	LIFTER SUBASSEMBLY, VALVE		2	192	5	5	60.2	RP8000E						
8	ROCKER SHAFT		2	38	10	10	12	RP8000E						
9	ROTATOR, VALVE		2	10	10	10	6	RP8000E						
10	ROCKER ARM, VALVE		2	165	25	22	109.4	RP8000E						



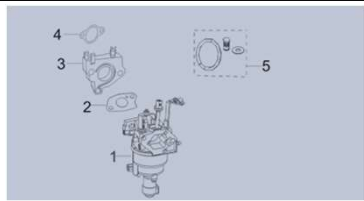
**RECOIL ASSY.**

REF.NO.	Description	CAT Part Number	Group QTY	L mm	W mm	H mm	Weight g	Model	CAT Group Part Number	Group Name	L mm	W mm	H mm	Weight kg
1	STARTER ASSY, RECOIL		1	258	258	48	709.8	RP8000E	512-8296	PULLEY GP-CSHAFT	258	258	60	0.7536
2	BOLT		3	15	15	11	14.6	RP8000E						



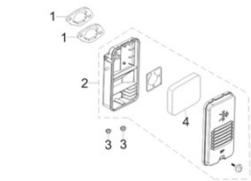
**SHROUD ASSY.**

REF.NO.	Description	CAT Part Number	Group QTY	L mm	W mm	H mm	Weight g	Model	CAT Group Part Number	Group Name	L mm	W mm	H mm	Weight kg
1	SHROUD		1	380	142	264	842.5	RP8000E	512-8297	SHROUD GP-AIR	380	264	210	1.1001
2	SHROUD, CYLINDER BODY		1	170	55	75	120.6	RP8000E						
3	BOLT		1	19	16	16	208	RP8000E						
4	BOLT		5	19	16	16	208	RP8000E						
5	CLIP		1	100	12	2	5	RP8000E						



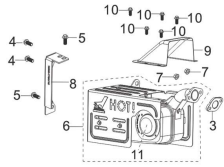
**CARBURETOR ASSY.**

REF.NO.	Description	CAT Part Number	Group QTY	L mm	W mm	H mm	Weight g	Model	CAT Group Part Number	Group Name	L mm	W mm	H mm	Weight kg
1	CARBURETOR ASSY.	511-7277	1	190	90	60	437.8	RP8000E	512-8298	CARBURETOR GP-B	190	90	70	0.4868
2	GASKET, CARBURETOR	511-7269	1	65	43	2	1	RP8000E						
3	PLATE, CARBURETOR INSULATOR	511-7271	1	70	16	2	47.4	RP8000E						
4	GASKET, INLET	511-8857	1	68	38	2	0.6	RP8000E						
5	High Altitude Kit(3000-6000ft)	501-5088	1					RP8000E						
	High Altitude Kit(6000-8000ft)	501-5089	1					RP8000E						



**AIR CLEANER ASSY.**

REF.NO.	Description	CAT Part Number	Group QTY	L mm	W mm	H mm	Weight g	Model	CAT Group Part Number	Group Name	L mm	W mm	H mm	Weight kg
1	GASKET, AIR CLEANER	511-7286	2	70	45	2	1.2	RP8000E	512-8299	CLEANER GP-AIR-B	260	75	40	0.4764
2	CLEANER, AIR		1	260	15	75	448.2	RP8000E						
3	NUT		2	15	6	15	6.8	RP8000E						
4	FILTER, AIR CLEANER	511-7290	1	40	17	22	12.2	RP8000E						



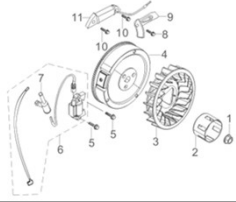
**RP8000E MUFFLER ASSY.**

REF.NO.	Description	CAT Part Number	Group QTY	L mm	W mm	H mm	Weight g	Model	CAT Group Part Number	Group Name	L mm	W mm	H mm	Weight kg
3	GASKET, EXHAUST OUTLET	511-7291	1	70	46	1	8.4	RP8000E	512-8300	MUFFLER GP	280	240	280	3.7497
4	BOLT		2	24	18	18	23	RP8000E						
5	BOLT		2	24	18	18	23	RP8000E						
8	BRACKET, MUFFLER		1	165	49	5	152.6	RP8000E						
6	MUFFLER ASSEMBLY		1	280	200	240	3352	RP8000E						
7	NUT		2	13	13	7	4.6	RP8000E						
9	Muffler Air Guide Cover		1	150	130	70	216	RP8000E						
10	BOLT		5	18	13.5	13.5	6.5	RP8000E						
11	SPARK ARRESTOR	501-5080	1	85	15	93	30	RP8000E						



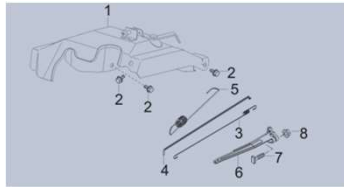
**FUEL TANK ASSY.**

REF.NO.	Description	CAT Part Number	Group QTY	L mm	W mm	H mm	Weight g	Model	CAT Group Part Number	Group Name	L mm	W mm	H mm	Weight kg
6	HOSE, FUEL STEAM RUBBER		1	870	10	10	43	RP8000E	512-8302	VENT GP-FUEL	250	250	80	0.0704
7	ROLLOVER VALVE		1	33	50	33	24.2	RP8000E						
8	CLAMP		1	20	8	20	1.6	RP8000E						
9	FUEL CAP		1	96	40	96	189.6	RP8000E						
13	CHAIN, FUEL CAP		1	165	10	165	5.4	RP8000E	512-8303	CAP GP-FUEL	165	165	60	0.1952
14	CLIP, FUEL CAP CHAIN		1	11	11	2	0.2	RP8000E						
1	BOLT		4	31	14	14	8.8	RP8000E	501-5423	TANK GP-FUEL (8)	640	510	200	6.1764
2	WASHER		4	25	2	25	27.4	RP8000E						
3	BUSH		4	14	12	14	19	RP8000E						
4	SLEEVE, FUEL TANK RUBBER		4	14	26	14	21	RP8000E						
5	TANK, FUEL	511-7281	1	640	510	130	5748.2	RP8000E						
12	LEVELER GAUGE, FUEL	501-5422	1	145	35	35	17.8	RP8000E						
10	STRAINER, FUEL	511-8851	1	51	59	51	7.2	RP8000E						
11	FUEL OUTLET NOZZLE	511-8853	1	54	21	21	4.2	RP8000E						



**RP8000E FLYWHEEL ASSY.**

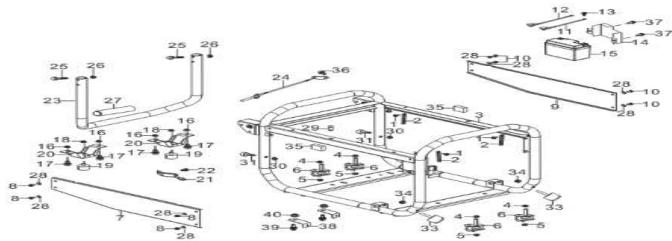
REF.NO.	Description	CAT Part Number	Group QTY	L mm	W mm	H mm	Weight g	Model	CAT Group Part Number	Group Name	L mm	W mm	H mm	Weight kg
5	BOLT		2	35	15	15	8.6	RP8000E	512-8305	COIL GP-IGNITION	395	50	60	0.2898
6	COIL, IGNITION		1	395	50	30	241	RP8000E						
7	CAP, SPARK PLUG		1	85	32	22	32	RP8000E						
1	NUT, FLYWHEEL		1	30	30	25	35.2	RP8000E	512-8306	FLYWHEEL GP	210	210	170	6.4492
2	CLIP, STARTER		1	75	75	65	191.2	RP8000E						
3	IMPELLER		1	210	210	45	221.4	RP8000E						
4	FLYWHEEL SUBASSEMBLY		1	210	210	58	6000	RP8000E						
8	BOLT		1	19	16	16	208	RP8000E	512-8307	CHARGER GP-BTRY	110	50	40	0.2178
9	CLAMP, CHARGE COIL		1	70	50	5	13.8	RP8000E						
10	BOLT		2	40	16	16	8.5	RP8000E						
11	COIL SUBASSEMBLY, CHARGE		1	110	28	24	165	RP8000E						



**GOVERNOR CONTROL ASSY.**

REF.NO.	Description	CAT Part Number	Group QTY	L mm	W mm	H mm	Weight g	Model	CAT Group Part Number	Group Name	L mm	W mm	H mm	Weight kg
1	CONTROL ASSY, THROTTLE		1	280	220	50	356	RP8000E	512-8309	GOVERNOR GP -E	280	220	100	0.514
2	BOLT		3	19	16	16	208	RP8000E						
3	SPRING, THROTTLE VALVE RETURNING		1	221	6	15	0.8	RP8000E						
4	ROD, GOVERNOR		1	238	10	10	7.6	RP8000E						
5	SPRING, GOVERNOR	511-7275	1	137	12	12	23.6	RP8000E						
6	SUPPORT SUBASSEMBLY, GOVERNOR		1	180	42	15	50.4	RP8000E						
7	BOLT, GOVERNOR SUPPORT		1	25	13.5	25	2.8	RP8000E						
8	NUT		1	15	6	15	6.8	RP8000E						





**RP8000E CO FRAME ASSY.**

REF.NO.	Description	CAT Part Number	Group QTY	L mm	W mm	H mm	Weight g	Model	CAT Group Part Number	Group Name	L mm	W mm	H mm	Weight kg
1	BOLT		3	18	13.5	13.5	6.5	RP8000E						
2	CLIP		2	100	12	2	5	RP8000E						
43	CLIP		1					RP8000E						
3	FRAME ASSY		1	780	530	580	8400	RP8000E	530-1250	FRAME GP	780	580	530	8.5675
29	PROTECT RUBBER		1	13	10	10	1	RP8000E						
30	NYLON NUT		2	8.65	8	5	3	RP8000E						
31	ISOLATOR		2	11.5	19.5	19.5	5	RP8000E						
33	RUBBER CUSHION		2	67	34	34	55	RP8000E						
34	CAP NUT		2	8.7	8.7	5	0.5	RP8000E						
35	SOUND ABSORBING COTTON		2	50	25	25	0.5	RP8000E						
4	NUT		4	21	12	21	4.7	RP8000E						
5	NUT		4	8	17	8	26.6	RP8000E	512-8311	ISOLATOR GP	86	80	60	0.6384
6	ISOLATOR, FRAME		4	86	80	45	86	RP8000E						
7	LEFT SIDE PANEL		1	650	120	10	996.6	RP8000E						
8	BOLT		4	18	13.5	13.5	6.5	RP8000E	512-8312	COVER GP-LH	650	120	30	1.027
28	WASHER		8	12	12	1	0.4	RP8000E						
9	RIGHT SIDE PANEL		1	650	120	10	996.6	RP8000E						
10	BOLT		4	18	13.5	13.5	6.5	RP8000E	512-8313	COVER GP-RH	650	120	30	1.0242
28	WASHER		1	12	12	1	0.4	RP8000E						
11	WIRE, POSITIVE		1	35	10	5	23.6	RP8000E						
12A	WIRE, NEGATIVE (FROM BATTERY)		1					RP8000E						
12B	WIRE, NEGATIVE (FROM G-HEAD)		1					RP8000E						
13	BOLT		1	19	8	19	36	RP8000E	501-5428	BATTERY GP-MTG&	150	85	120	0.7
14	BATTERY PRESSURE PLATE	501-5090	1	150	85	32	189	RP8000E						
15	BATTERY	511-7304	1	105	54	85	412	RP8000E						
37	BOLT		2	22.5	14	14	7	RP8000E						
16	NUT		4	8	17	8	27.2	RP8000E						
17	BOLT		4	25	17	25	47	RP8000E						
18	NUT		2	8	17	8	13.6	RP8000E	512-8315	SUPPORT GP-FRAME	154	55	100	1.7532
19	FOOT, FRAME SUPPORT BRACKET		2	37	37	37	109.2	RP8000E						
20	SUPPORT BRACKET, FRAME		2	154	55	53	605.4	RP8000E						
21	SUPPORT BRACKET, ATR CLEANER		1	140	21	30	6.6	RP8000E	512-8316	SUPPORT GP-ACL	140	30	40	0.0286
22	BOLT		1	19	16	16	208	RP8000E						
23	HANDLE		1	440	515	130	1600	RP8000E						
24	LOCK PIN		1	25	2	25	37.4	RP8000E						
25	BOLT		2	60	17	17	56.8	RP8000E						
26	NUT		2	8	17	8	27.2	RP8000E	512-8317	BRACKET GP -D	515	440	200	1.8236
27	FOAM, HANDLE		1	208	40	40	21	RP8000E						
36	BOLT		1	18	13.5	13.5	6.5	RP8000E						
38	FOOT, FRAME SUPPORT BRACKET		2					RP8000E						
39	BOLT		2					RP8000E						
40	NUT		2					RP8000E						

**CO MODULE**

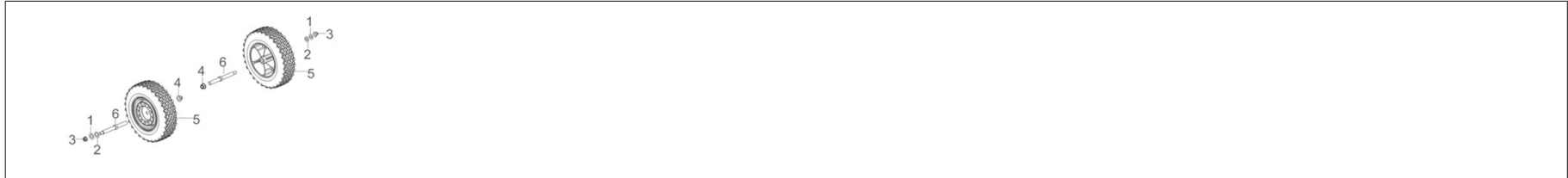
41	CO MODULE		1					RP8000E	530-1238	DETECTOR-CO	65	65	40	0.4
42	BOLT		2					RP8000E						



RP8000E CO CONTROL PANEL ASSY.										
1	BOLT		4	18	13.5	13.5	6.5		RP8000E	
2	PANEL SUBASSEMBLY, CONTROL		1	450	140	150	1958		RP8000E	530-1240
25	WASHER		4	12	12	1	0.4		RP8000E	PANEL GP-CONT-B
20	SWITCH SUBASSEMBLY	530-1255	1						RP8000E	450
20a	ON/OFF KNOB	501-5455	1	50	50	40	15		RP8000E	150
22	PROTECTOR, OVERCURRENT	530-1257	2						RP8000E	170
24	LED LIGHT	530-1251	1						RP8000E	1.9884



RP8000E GENERATOR ASSY.										
12	MOTOR ASSY.								RP8000E	
28	GEN HEAD ASSY(include items 1 - 27)	501-5093	1	400	250	250			RP8000E	



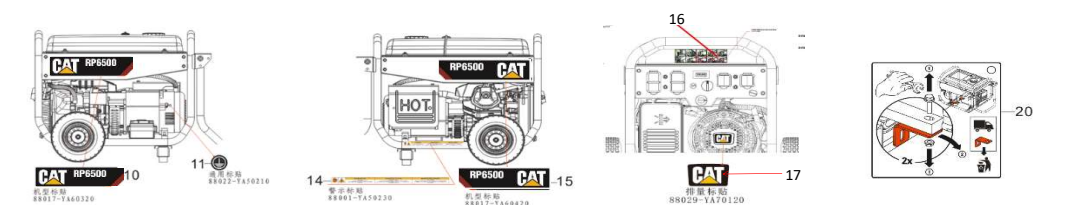
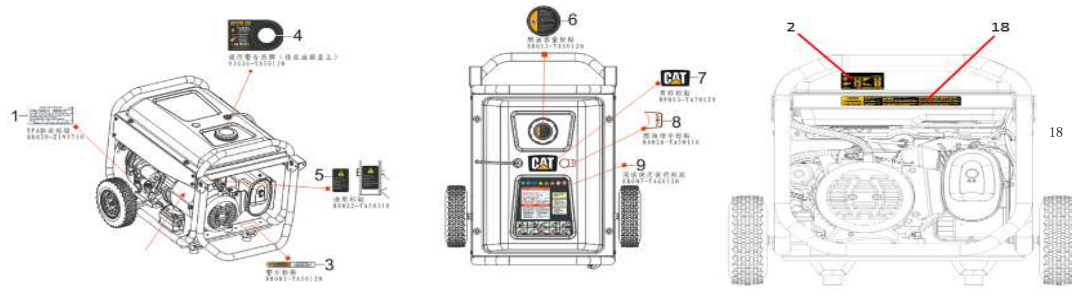
WHEEL ASSY.										
REF.NO.	Description	CAT Part Number	Group QTY	L mm	W mm	H mm	Weight #	Model	CAT Group Part Number	Group Name
1	WASHER		2	20	0.5	20	4.8	RP8000E	512-8324	WHEEL GP-TIRE&
2	WASHER		2	24	24	1.2	3	RP8000E		
3	NUT		2	10	18.5	10	16.4	RP8000E		
4	NUT		2	10	18.5	10	16.4	RP8000E		
6	AXLE, WHEEL		2	142	17	142	137.4	RP8000E		
5	WHEEL	511-7307	2	240	80	240	1556.4	RP8000E		
										50
										3.4688

FULL ENGINE ASSY.														
REF.NO.	Description	CAT Part Number	Group QTY	L mm	W mm	H mm	Weight g	Model	CAT Group Part Number	Group Name	L mm	W mm	H mm	Weight kg
E00-1	ENGINE R420D-V	511-8016	1					RP8000E						



TOOL KIT.														
REF.NO.	Description	CAT Part Number	Group QTY	L mm	W mm	H mm	Weight g	Model	CAT Group Part Number	Group Name	L mm	W mm	H mm	Weight kg
1	SPARK PLUG WRENCH KIT		1	155	23	23	137	RP8000E	501-5146	TOOL GP	230	120	40	0.424
2	SCREWDRIVER		1	210	33	33	85	RP8000E						
3	SPANNER, DOUBLE ENDED		2	135	30	5	67	RP8000E						
4	SPANNER, DOUBLE ENDED		1	120	13	4	48	RP8000E						
5	TOOL KIT BAG		1	230	120	20	20	RP8000E						
6	FUNNEL, FILLING OIL	501-5147	1	380	110	80		RP8000E						

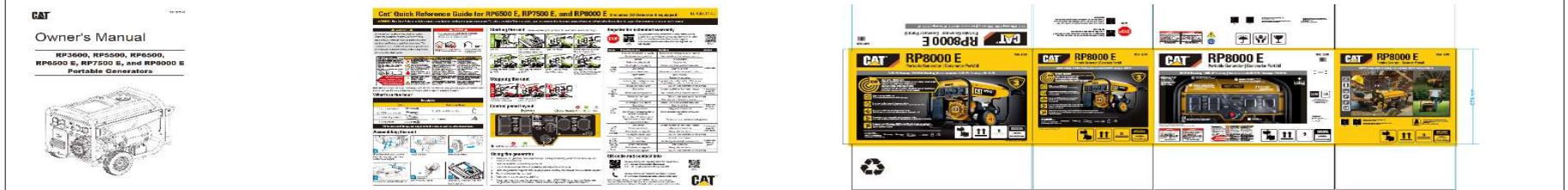
RP8500 FIG.21 DECALS/MANUAL/QSG(E00)



REF.NO.	Description	CAT Part Number	Group QTY	L mm	W mm	H mm	Weight g	Model	CAT Group Part Number	Group Name	L mm	W mm	H mm	Weight kg
3	LABEL HOT SURFACE		1	135	15			RP8000E	530-1243	FILM GP	255	206	10	0.063
5	LABEL HANDLE WARNING		1	45	28									
6	LABEL FUEL SPEC		1	65	65									
9	LABEL GENERAL WARNING		1	206	223									
11	LABEL GROUND		1	11	11									
14	LABEL HOT EXHAUST		1	255	15									

RP8000E FIG.21 DECALS/MANUAL/QSG(E00)

REF.NO.	Description	CAT Part Number	Group QTY	L mm	W mm	H mm	Weight g	Model	CAT Group Part Number	Group Name	L mm	W mm	H mm	Weight kg
2	LABEL SPEC EPA	530-1245	1	114	51			RP8000E						
7	LABEL TRADEMARK		1	105	64									
10	LABEL MODEL LEFT		1	363	90			RP8000E	530-1242	FILM GP	363	90	6	0.057
15	LABEL MODEL RIGHT		1	363	90									
17	LABEL RECOIL LOGO		1	62	38									



REF.NO.	Description	CAT Part Number	Group QTY	L mm	W mm	H mm	Weight g	Model	CAT Group Part Number	Group Name	L mm	W mm	H mm	Weight kg
21	QUICK START GUIDE EPA/CARB		1	207	142.5			RP8000E						
22	CARTON							RP8000E						

Updated March 8, 2023