

# D8 GC

## TRACK-TYPE TRACTOR



---

Engine Model	Cat® 3406C
Net Power (2,100 rpm)	226 kW (303 hp)
ISO 9249/SAE J1349	307 mhp
ISO 9249/SAE J1349 (DIN)	
Operating Weight	37 557 kg (82,800 lb)



The Cat® D8 GC gives you performance and durability in a simple, economical dozer. Designed to take on everything from rocky terrain to desert sand to extreme cold, this bulldozer is easy to operate and delivers the straightforward service and maintenance you need.

# THE NEW CAT® D8 GC

DESIGNED FOR YOUR BUSINESS



## THE RIGHT FIT

The new D8 GC is designed with your business needs in mind. Whether it's basic earthmoving or specialized work in the toughest conditions, the D8 GC offers solutions for your jobsite and your budget.

- + Choices like General Duty undercarriage and a simplified ripper offer lower initial purchase price options.
- + Desert/High Abrasion package offers factory features designed to enhance machine performance in extremely sandy or abrasive underfoot conditions.
- + Choose factory options for added starting capability and improved component performance when working in extreme cold.



---

## MAXIMUM UPTIME

Maintenance is easy, with widely available parts. Designed and built by Caterpillar using proven components, the D8 GC is simple to diagnose, maintain and repair, even in remote locations.

---

## ROBUST PERFORMANCE

Count on durability with the Cat 3406C mechanical engine, heavy-duty structures and high drive undercarriage.

---

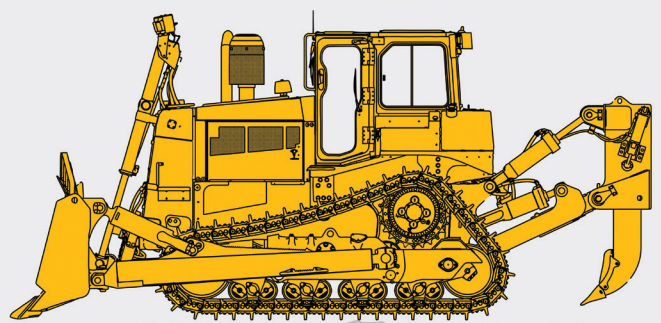
## UP TO 10% LOWER OWNING COST

Choose simplified options for reduced acquisition cost. Competitive performance and fuel efficiency help you maximize your equipment investment.



---

» **ALL MECHANICAL** «



---

**SIMPLE** EASY TO OPERATE.  
EASY TO SERVICE.  
EASY TO REPAIR.





## COST EFFECTIVE

---

Experience up to 10 percent lower owning cost compared to the D8T. Choices like General Duty undercarriage and a simplified ripper offer lower initial purchase price options.



## PROVEN PERFORMER

---

Feel the power of the well-known Cat 3406C engine. Caterpillar designed power train components work as a system for reliability and performance.



## RETURN ON INVESTMENT

---

Like its D8R predecessor, the D8 GC delivers the weight and horsepower you need for solid dozing and ripping performance.



## EASY TO OWN

---

Everything about the D8 GC, like its mechanical systems, robust structures, access to components and widely available parts, is designed to help make it easy to own.

DESIGNED FOR  
**YOUR BUSINESS**





## DESERT/HIGH ABRASION DOZER

Equip your dozer with factory features designed to enhance machine performance in extremely sandy or abrasive underfoot conditions.



## TAKE ON THE HEAT

Cooling system is designed for high debris environments, with easy access for cleanout. Core protection grid and specially coated fan and radiator help resist abrasion.



## BETTER BLADE LIFE

Optional wear plates can be replaced to give you longer blade life when working in abrasive conditions.



## GREATER PROTECTION

Sealed bottom guard and added seals help keep fine abrasive particles out of components. High ambient fluids aid performance in the hottest conditions.

# MAINTENANCE MADE EASY

BECAUSE UPTIME COUNTS



---

## FULLY MECHANICAL

The engine and transmission are fully mechanical. These familiar systems make diagnostics and repairs easier when your work takes you to remote locations. Maintenance is easier with widely available parts.

---

## EASY ACCESS

Major components are modular for easy maintenance and repair access. Wide access doors and grouped service points save routine maintenance time.

---

## GET BACK TO WORK

Individual radiator cores can be quickly replaced for ease of service. Exclusive new Cat hydraulic and power train oil filters offer extended service intervals to save you time and money.

---

## COLD WEATHER CAPABLE

For work in extreme cold, choose factory options for added starting capability and improved component performance in arctic temperatures.

## DURABILITY FROM THE GROUND UP

Whether you're looking for the lowest upfront cost, longer wear life or lower operating cost per hour, we have the right undercarriage solution for your business.

- + Choose Heavy Duty undercarriage for aggressive, high-impact applications like logging/reforestation, side slopes and rocky conditions.
- + General Duty undercarriage is available for low- to moderate-impact applications.
- + General Duty and Heavy Duty components are interchangeable, and Heavy Duty shoes can be installed on General Duty link assemblies to maximize flexibility to meet your needs.

## UP TO THE TASK

Caterpillar designed power train components work as a system for reliability and performance. Heavy structures make for a robust machine that can stand up to high impact shock loads and twisting forces.

## POWER WHERE IT COUNTS

Harness more power to the ground with a proven, Caterpillar exclusive torque divider and the durable Cat 3-speed mechanical planetary powershift transmission. Differential steering maintains full power to both tracks for best-in-class turning, even with a full blade load. Dedicated implement pump ensures hydraulic power when you need it.

## ELEVATED PERFORMANCE

Caterpillar elevated sprocket undercarriage protects the power train from shock loads. Suspended undercarriage provides a smooth ride and better traction in uneven terrain. High drive design allows heavy components to sit low in the mainframe, resulting in a low center of gravity and excellent machine balance.



**HARD WORKING**  
**BUILT TO LAST**

# DESIGNED FOR **EASY** **OPERATION**

The D8 GC cab is designed to help make operation simple for operators of varied experience levels. Comfort features help operators stay focused and productive all shift long.



## **WORK SPACE**

Choice of cab or canopy dozer, with Integrated Roll Over Protective Structure (ROPS/FOPS), for comfort, excellent visibility and added safety. Choose from three light packages, all with longer life, brighter LED bulbs to illuminate your work area.

## **TAKE CONTROL**

Simple tiller bar control for direction and gear selection offers easy operation and precise control in close areas. Pilot hydraulic implement controls reduce operator effort and offer more consistent, precise and responsive operation.

## **EASE AND COMFORT**

Quiet cab interior, pressurized to help keep out dust for a cleaner operating environment. Easy-to-read analog display with machine health monitoring keeps operator informed about machine operating conditions. Added comfort with available cab air conditioning.



# MORE THAN MACHINES

## BUILT AROUND YOUR SUCCESS

---

Cat dealer support helps you make the most of your equipment investment.

### TOP DEALER SUPPORT

When you buy Cat equipment, you're getting so much more than the machine. You're also getting the support of a best-in-class dealer network, backed by a range of flexible solutions, technology, tools and more. It's Customer Value Agreements (CVA) and financing solutions. It's cost-saving service and repair options. It's quality parts and precision components. It's rental and used equipment options. It's all about support that's built around your success.



### PRODUCT LINK™/VISIONLINK®

You can simplify your maintenance by using Cat Product Link™ to track machine location and service hours on your D8 GC. View the data using VisionLink® or the Cat App.



### CAT APP

The Cat App helps you manage your assets – at any time – right from your smartphone. See fleet location and hours, get critical required maintenance alerts and even request service from your local Cat dealer.



# TECHNICAL SPECIFICATIONS

See [cat.com](http://cat.com) for complete specifications.

ENGINE			
Engine Model	Cat® 3406C DITA		
Build Number	18A		
Emissions	Noncertified		
Net Power (2,100 rpm)			
ISO 9249/SAE J1349	226 kW	303 hp	
ISO 9249/SAE J1349 (DIN)	307 mhp		
80/1269/EEC	226 kW	303 hp	
Fuel Tank	625 L	165 gal	

- Net power advertised is the power available at the flywheel when engine is equipped with a fan at maximum speed, air cleaner, muffler and alternator.
- Advertised power is tested per the specified standard in effect at the time of manufacture.

OPERATING WEIGHT			
D8 GC	37 557 kg	82,800 lb	
D8 GC Desert Arrangement	37 876 kg	83,502 lb	

GROUND PRESSURE			
Ground Pressure (ISO 16754)			
D8 GC	85.3 kPa	12.4 psi	
D8 GC Desert Arrangement	86.0 kPa	12.5 psi	

BLADES				
	Capacity		Width	
Semi-Universal (SU)	8.7 m <sup>3</sup>	11.4 yd <sup>3</sup>	3812 mm	12.5 ft

DIMENSIONS			
Width of Standard Track Shoe	610 mm	24 in	
Shoes/Side			44
Track Rollers per Side			8
Ground Contact Area (ISO 16754)	3.91 m <sup>2</sup>	6,060 in <sup>2</sup>	
Track Gauge	2083 mm	82 in	
Width of Tractor (without trunnions)	2693 mm	106 in	
Machine Height to Top of Cab	3498 mm	137.7 in	
Length of Track on Ground	3206 mm	126.2 in	
Length of Basic Tractor (tag link trunnion to tip of rear grouser)	4625 mm	182 in	
<b>With the following attachments add:</b>			
Single Shank Ripper (with tip at ground line)	1519 mm	59.8 in	
Multi-Shank Ripper (with tip at ground line)	1613 mm	63.5 in	
Drawbar	406 mm	16.0 in	
SU Blade	1844 mm	72.6 in	
Ripper Weight – Single Shank	4140 kg	9,119 lb	
Ripper Weight – Multi-Shank	4100 kg	9,031 lb	

# STANDARD & OPTIONAL EQUIPMENT

Standard and optional equipment may vary. Consult your Cat dealer for details.

POWER TRAIN	STANDARD	OPTIONAL
Cat 3406C DITA diesel engine	•	
3F/3R speed powershift transmission	•	
4-planetary double reduction final drives	•	
Precleaner	•	
Turbine precleaner		•
Turbine precleaner with screen		•
Fan speed – basic	•	
Fan speed – decrease		•
Cooling fan	•	
Cooling fan – reversible		•
Cooling fan – coated		•
Fuel priming pump	•	
OPERATOR ENVIRONMENT	STANDARD	OPTIONAL
Enclosed cab with integrated ROPS/FOPS	•	
Canopy with integrated ROPS/FOPS		•
Adjustable contour suspension cloth seat	•	
Vinyl seat		•
Adjustable armrest	•	
Retractable seat belt, 76 mm (3 in) wide	•	
Differential steering tiller bar with dual-twist control	•	
Electronic monitoring system	•	
Underhood air conditioning	•	
No air conditioning		•
TECHNOLOGY PRODUCTS	STANDARD	OPTIONAL
Product Link™, Basic Cellular PL243	•	
Product Link ready	•	
Product Link, Cellular PL641		•
Product Link, Satellite PL631		•
No Product Link		•
BLADES	STANDARD	OPTIONAL
Semi-Universal (SU) blade	•	
SU blade with rock guard and wear plate		•
GUARDS	STANDARD	OPTIONAL
Rear cab screen		•
Bottom guards	•	
Bottom guards – heavy duty desert		•
Fuel tank guard		•

UNDERCARRIAGE	STANDARD	OPTIONAL
Suspended undercarriage – Heavy Duty Positive Pin Retention (PPR)	•	
Suspended undercarriage – General Duty		•
Suspended undercarriage – Heavy Duty Cold Weather		•
Sealed and lubricated track – 44 section PPR	•	
Extreme Service track shoes	•	
Moderate Service track shoes		•
Lifetime lubricated track rollers and idlers	•	
Hydraulic track adjusters	•	
Replaceable sprocket rim segments	•	
ELECTRICAL	STANDARD	OPTIONAL
2 batteries – 12V each, 24V system	•	
4 batteries – 12V each, 24V system		•
4 batteries – cold weather, 24V		•
12V converter, 10 amp with outlet in cab	•	
LED lights – 4	•	
LED lights – 6		•
LED lights – 10		•
HYDRAULICS	STANDARD	OPTIONAL
Load sensing dozer (lift/tilt) hydraulics	•	
Ripper (lift/pitch) hydraulics	•	
Independent steering and implement hydraulic pumps	•	
SERVICE AND MAINTENANCE	STANDARD	OPTIONAL
Sampling ports for engine oil, coolant, powertrain oil, hydraulic oil	•	
High-speed oil change system		•
REAR ATTACHMENTS	STANDARD	OPTIONAL
Single shank ripper		•
Single shank ripper – fixed link		•
Single shank ripper with pin puller		•
Multi-shank ripper		•
Rear counterweight		•
Additional counterweight		•
DOZER ARRANGEMENTS	STANDARD	OPTIONAL
Standard arrangement	•	
Desert arrangement		•

**Not all features are available in all regions. Please check with your local Cat dealer for specific offering availability in your area.**  
For additional information, refer to the Technical Specifications brochures for the D8 GC available at [www.cat.com](http://www.cat.com) or your Cat dealer.

For more complete information on Cat products, dealer services and industry solutions, visit us on the web at [www.cat.com](http://www.cat.com).

VisionLink is a trademark of Trimble Navigation Limited, registered in the United States and in other countries.

Materials and specifications are subject to change without notice. Featured machines in photos may include additional equipment. See your Cat dealer for available options.

©2021 Caterpillar. All Rights Reserved. CAT, CATERPILLAR, LET'S DO THE WORK, their respective logos, Product Link, "Caterpillar Corporate Yellow", the "Power Edge" and Cat "Modern Hex" trade dress as well as corporate and product identity used herein, are trademarks of Caterpillar and may not be used without permission.

[www.cat.com](http://www.cat.com) [www.caterpillar.com](http://www.caterpillar.com)

AEXQ3293-00 (08-2021)  
Build Number: 18A  
(Afr-ME, CIS, India,  
Indonesia, SE Asia, S Am  
excluding Brazil)

