



BACKHOE LOADER SIDE SHIFT MODELS PARTS REFERENCE GUIDE

428, 432, 434, 444

SERIAL NUMBER PREFIX: L7D, L7E, L7K, L7M

LET'S DO THE WORK.™




» PROTECT YOUR INVESTMENT WITH GENUINE CAT® PARTS

Thank you for selecting the Cat® Side Shift Model Backhoe Loaders.

This guide is designed to provide you with a quick reference for the parts and part numbers you need to keep your Cat Backhoe Loader operating at peak efficiency.

MAINTENANCE

Proactive preventative maintenance extends the life of your machine and protects your investment. Only Caterpillar knows Cat equipment's filtration and lubrication requirements and offers parts kits to match your machine's maintenance cycles.

SCHEDULED MAINTENANCE PARTS	
	GREASES
	PLANNED MAINTENANCE KITS

REPLACEMENT PARTS

Proper maintenance minimizes the need for repair and replacement. In the event that replacement parts are required, the use of genuine Cat parts helps maximize machine performance and maintains high resale value.

WEAR PARTS	SALES MODEL	SERIAL NUMBER PREFIX
GROUND ENGAGING TOOLS	428	L7D
WEARPADS AND SHIMS		
REPAIR PARTS	432	L7E
BATTERY		
ENGINE PARTS		
MIRRORS, LIGHTS AND FUSES	434	L7K
CAB GLASS		
ENHANCEMENT PARTS	444	L7M
QUICK DISCONNECTS		
LINKAGE PIN AND BEARING PARTS		

GREASES

Previous Cat Product Name	STANDARD MAINTENANCE GREASES			GREASES FOR UNIQUE APPLICATIONS AND ENVIRONMENTS
	Cat Ultra5 Moly #1	Cat Ultra5 Moly #2	Cat Advanced 3 Moly	
Current Cat Product Name	Cat Extreme Application Grease 1	Cat Extreme Application Grease 2	Cat Prime Application Grease	Hammer Paste
Grade (NLGI)	1	2	2	2
Melting Point C° (F°)	>260 (>500)	>260 (>500)	260 (500)	230 (446)
Ambient Temperature C° (F°)	-35 to +40 (-31 to +104)	-30 to +50 (-22 to +122)	-20 to +40 (-4 to +104)	-20 to +1100 (-4 to +2012)
Base Oil Type	Mineral	Mineral	Mineral	Mineral
Color	Dark Gray	Dark Gray	Dark Gray	Bronze
Cartridge (390 g / 14 oz)	452-5996	452-6001	452-6006	130-6951 (standard) 317-8491 (autolube)
Plastic Pail (5 kg / 11 lb)	—	—	—	133-8807
Plastic Pail (16 kg / 35 lb)	452-5999	452-6004	452-6009	—
Keg (55 kg / 120 lb)	452-5998	452-6003	452-6008	—
Drum (180 kg / 400 lb)	452-5997	452-6002	452-6007	—



PLANNED MAINTENANCE KITS

Backhoe Loader		A (500 Hours)									B (1000 Hours)						
		Engine Oil/Filter Change		Engine Air Filter		Fuel Filter Change		Cabin Air		Transmission Filter Change	Axle Oil	Front Differential Oil Change		Front Final Drive Oil Change (each side)		Rear Differential Oil Change	
Sales Model	Serial Number Prefix	Filter Element	Oil Qty L (US Gal) DEO-ULS	Primary Element	Secondary Element	Primary Element	Secondary Element	Fresh Air Element	Recirculating Element	Filter Element	Oil Type	Oil Qty L (US Gal)	O-Ring	Oil Qty L (US Gal)	O-Ring	Oil Qty L (US Gal)	O-Ring
428	L7D	7W-2326	8.8 (2.3)	528-0585	346-6688	1R-1804	441-5111	417-8134	211-2660	471-7003	MTO	11 (2.9)	9R-3176 (QTY 2)	0.7 (0.2)	9R-3176	16 (4.6)	122-7776 (QTY 2)
432	L7E																
434	L7K										TDTO	14 (3.7)	6V-6228 (QTY 2)	1.7 (0.4)	6V-6228	16.5 (4.4)	6V-6228 (QTY 2)
444	L7M																

Backhoe Loader		B (1000 Hours)										
		Rear Differential		Rear Final Drive Oil Change (each side)		Hydraulic Filter Change			Transmission Oil/Filter Change		Transmission	
Sales Model	Serial Number Prefix	Oil Qty L (US Gal)	Additive	Oil Qty L (US Gal)	O-Ring	Filter Element	Seal (Housing)	Seal (Plug)	Oil Qty L (US Gal) TDTO	Seal	Breather	
428	L7D	-	-	1.7 (0.5)	2M-9780	362-1163	526-0891	2M-9780	15 (3.9) manual 19 (5) powershift 20 (5.3) lock up	238-5080 manual 5P-6718 powershift / lock up	9G-5127 manual 7T-3251 powershift / lock up	
432	L7E											
434	L7K	0.5 (0.13)	197-0017	6V-6228					19 (5) powershift 20 (5.3) lock up	5P-6718 powershift / lock up	7T-3251 powershift / lock up	
444	L7M											

Backhoe Loader		C (3000 Hours)					D (12000 Hours)			
		Belt (Serpentine) Change		Hydraulic Filter Change			Hydraulic Tank	Cooling System Coolant (ELC) Change		
Sales Model	Serial Number Prefix	No A/C	With A/C	Oil Qty Hydro Advance L (US Gal)		Breather	No A/C Qty L (US Gal)	With A/C Qty L (US Gal)		
428	L7D	390-0532	390-0536	41 (10.8)		9R-9925	20 (5.2)	22 (5.8)		
432	L7E									
434	L7K									
444	L7M									

Parts Maintenance Kits					
Machine Hours	500	A			
	1000	A	B		
	1500	A			
	2000	A	B		
	2500	A			
	3000	A	B	C	D

Parts Maintenance Kits					
Machine Hours	3500	A			
	4000	A	B		
	4500	A			
	5000	A	B		
	5500	A			
	6000	A	B	C	D

Parts Maintenance Kits					
Machine Hours	6500	A			
	7000	A	B		
	7500	A			
	8000	A	B		
	8500	A			
	9000	A	B	C	D

Parts Maintenance Kits					
Machine Hours	9500	A			
	10000	A	B		
	10500	A			
	11000	A	B		
	11500	A			
	12000	A	B	C	D

COMMON GROUND ENGAGING TOOLS

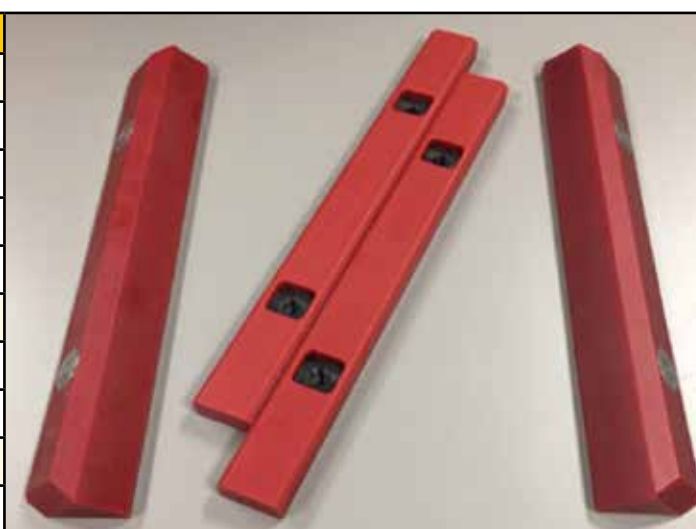
Loader		
Description (Width)	Qty	Part Number
Edge Group – Bolt-On (2262 mm)		9R-5321
Cutting Edge	2	9W-8215
Hex Head Nut	8	4K-0367
Washer Hard	8	8T-4122
Plow Bolt	8	3F-5108
Edge Group – Bolt-On (2406 mm)		9R-5320
Cutting Edge	2	118-7110
Hex Head Nut	8	4K-0367
Washer Hard	8	8T-4122
Plow Bolt	8	3F-5108
Edge Group – Bolt-On (2434 mm)		220-4758
Cutting Edge	2	220-4691
Hex Head Nut	8	4K-0367
Washer Hard	8	8T-4122
Plow Bolt	8	3F-5108
Cutting Edge MP (2406 mm)		233-0859
Tooth Group – Uni		9R-5866
Unitooth Tip	8	135-8203
Hex Head Nut	16	4K-0367
Plow Bolt	16	4F-3657

Hoe	
Description	Part Number
Diagonal Retention System (DRS230)	
Retainer	201-1239
Pin – GET	500-0269
Diagonal Pin Adapter	
Adapter (25 mm for Rock Buckets)	201-1234
Adapter (20 mm)	201-1235
Adapter (25 mm for Soil Buckets)	253-0234
Tip	
Penetration	208-5235
Chisel	208-5232
Soil Digging	208-5234
Long	208-5236
Twin Sharp	208-5237
Sharp	208-5239
Wide	208-5240



WEARPADS AND SHIMS

Location	Part Number
Stabilizer	
Pad (5.2 mm)	193-1681
Pad (4.2 mm)	193-1683
Pad (6.2 mm)	193-1684
Pad	331-2489
Extendable Stick	
Pad (Side)	319-9667
	319-9668
Powered Shift	
Slideframe	344-5303



BATTERY

Backhoe Loader		Battery	Part Number
Sales Model	Serial Number Prefix		
428	L7D	Standard	230-6368
432	L7E		
434	L7K		
444	L7M		






MIRRORS, LIGHTS AND FUSES

Mirrors		Part Number	Lights	Lamp Type	Part Number
Rear View	External	180-0448	Flood Lamp (Front and Rear) Long Range	Halogen Light	214-2969
Bracket	Right	382-2497		Halogen Bulb	9W-0607
Bracket	Left	382-2498	Flood Lamp (Front and Rear) Wide Range	Halogen Light	214-2968
Rear View	Internal	472-9218		Halogen Bulb	9W-0607
Rear View	External Rear	220-4050	Flood Lamp LED (Front and Rear) Wide Range	LED	479-8445

Fuses	Part Number	Lamp Signal (Stop, Tail and Turn) (Rear)	Lamp Type	Part Number
3 Amp Mini	395-9584	Lamp Signal (Stop, Tail and Turn) (Rear)	Lamp Assembly	336-9096
10 Amp	9W-1442		Halogen Bulb (Stop)	7S-1800
			Halogen Bulb (Signal)	9W-3326
10 Amp Mini	113-8490		Lens	352-4645
15 Amp	9W-1441	Lamp Signal (Stop, Tail and Turn) LED (Rear)	LED	387-6627
15 Amp Mini	113-8491	Dome Lamp	Lamp Assembly	426-0976
20 Amp	9W-1446	Lamp 12V (Dome)	Lamp	210-8754
25 Amp	1Q-1905	Beacon (Warning) Strobe Light	Roof Mounted	140-3668
30 Amp	192-7727	Beacon (Rotating Warning)	Roof Mounted	309-1325
40 Amp	232-6313		Halogen Bulb	9X-8118
50 Amp	418-0363	Lamp (Head and Signal)		
		Traffic Side: Right	Machine Side: Right	195-0189
			Machine Side: Left	195-0190
		Traffic Side: Left	Machine Side: Right	195-0191
			Machine Side: Left	195-0192
		Head and Signal Lamp	Halogen Bulb (Head)	9W-3324
			Lamp (Clear)	226-4561
			Lamp (Signal)	226-4560

ENGINE PARTS

Backhoe Loader				Part Number / Reman												
Sales Model	Serial Number Prefix	Engine Gross Power Rating*	Emissions	Engine	Long Block	Alternator	Fuel Injector		Fuel Injection Pump		Water Pump	Starting Motor		Turbocharger		
428	L7D	68.5kW	U.S. EPA Tier 2/EU Stage II	521-6420	20R-4053	383-2557	236-1674	20R-0471	249-9226	10R-9721	354-1672	143-0539	0R-4316	237-3786	10R-9577	
434	L7K															
428	L7D															
432	L7E															
434	L7K															
444	L7M	74.5kW	U.S. EPA Tier 3/EU Stage IIIA	521-6421	-	315-3381	315-3381	315-3381	315-3381	315-3381	326-8993	20R-4832	355-2252	303-5795	315-9721	20R-4005
428	L7D															
428	L7D															
432	L7E															
434	L7K															
444	L7M	74.5kW	U.S. EPA Tier 3/EU Stage IIIA	521-6422	-	315-3381	315-3381	315-3381	315-3381	315-3381	326-9147	20R-6819	355-2252	303-5795	326-9153	-
428	L7D															
428	L7D															
432	L7E															
434	L7K															
444	L7M	74.5kW	U.S. EPA Tier 3/EU Stage IIIA	521-6423	-	315-3381	315-3381	315-3381	315-3381	315-3381	326-9147	20R-6819	355-2252	303-5795	326-9153	-
428	L7D															
428	L7D															
432	L7E															
434	L7K															
444	L7M	74.5kW	U.S. EPA Tier 3/EU Stage IIIA	521-6423	-	315-3381	315-3381	315-3381	315-3381	315-3381	326-9147	20R-6819	355-2252	303-5795	326-9153	-
428	L7D															
428	L7D															
432	L7E															
434	L7K															

CAB GLASS

Position	Part Number
Windscreen (Top)	382-2342
Windscreen (Bottom Right)	382-2344
Windscreen (Bottom Left)	382-2343
Left Door (Top)	382-2261
Left Door (Bottom)	382-2263
Right Door (Top)	382-2274
Right Door (Bottom)	382-2269
Left Rear (Top)	382-2249
Left Rear (Bottom)	382-2310
Right Rear (Top)	382-2250
Right Rear (Bottom)	382-2311
Rear Glass	438-6967



QUICK DISCONNECTS

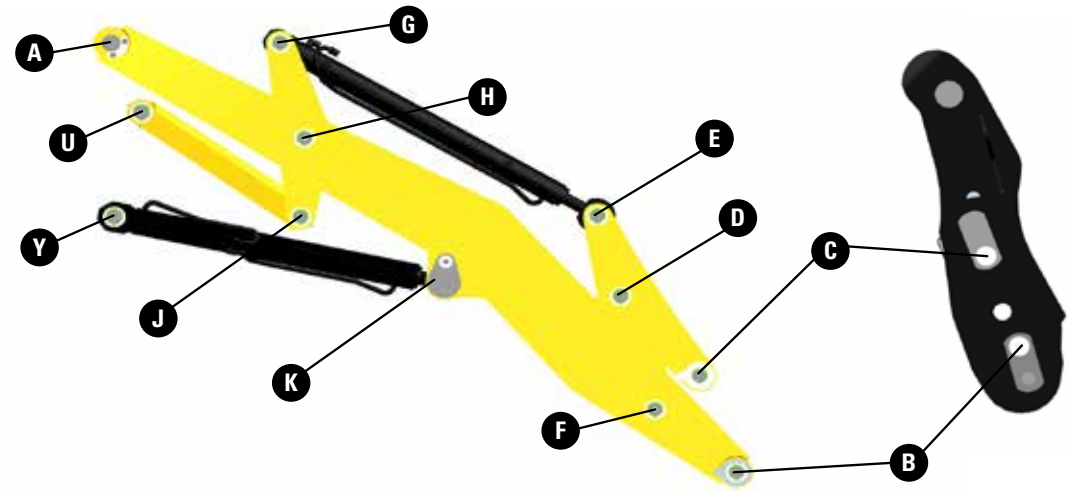
Get the most out of your Cat Backhoe Loader with a wide range of hydraulic work tool attachments that can be easily interchanged with Quick Disconnects. Contact your Cat dealer for a complete list of all available attachments.

Function	Twist to connect – Connect under pressure			
	Male	Cap	Female	Cap
Loader	439-1589		439-1588	
		471-1018		471-1017
Hoe	439-1591		439-1590	

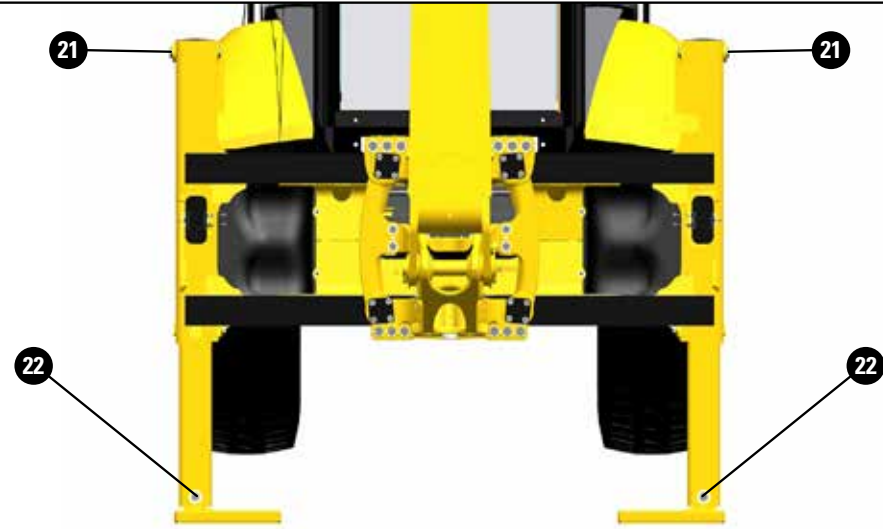


LINKAGE PIN AND BEARING PART NUMBERS

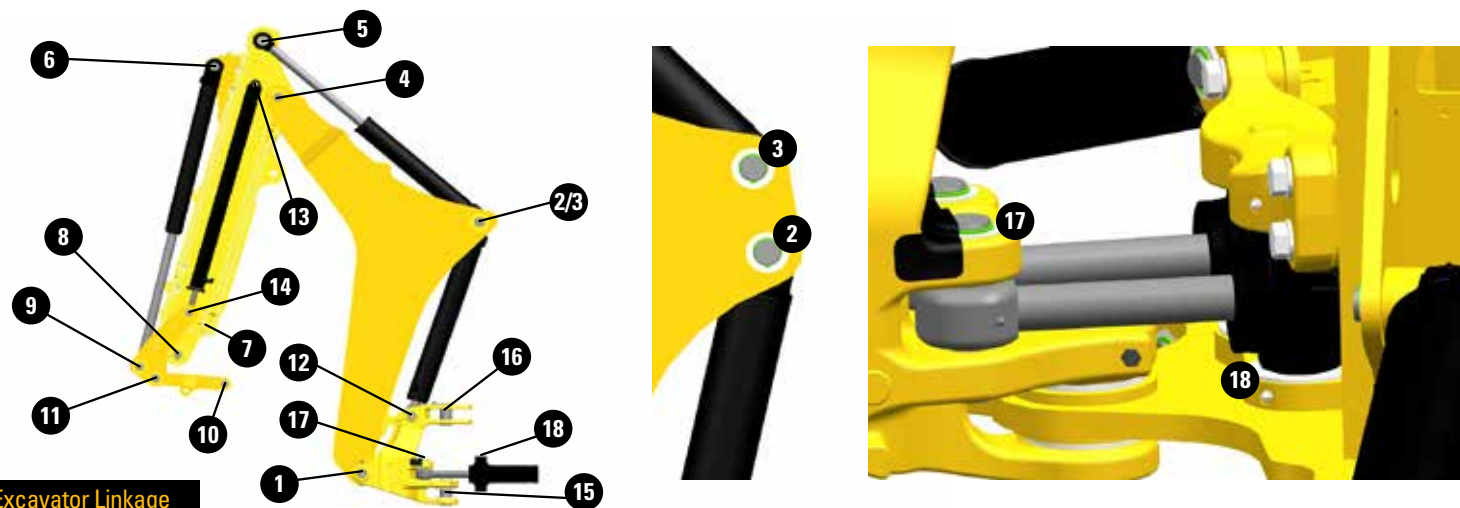
See part numbers on following pages



Front Load - 8-Bar Loader Linkage Quick Coupler



Side Shift Stabilizers



Excavator Linkage

FRONT LOAD – 8-BAR LOADER LINKAGE QUICK COUPLER

Linkage Pins																											
Sales Model	Serial Number Prefix	A	B Arm	B Coupling	C Arm	C Coupling	D	E	F	G	H	J	K	U	Y												
428	L7D	341-6152 Pin	438-0593 Pin (QTY 2)	360-2812 Pin (QTY 2)	438-0593 Pin (QTY 2)	360-2812 Pin (QTY 2)	360-2813 Pin (QTY 2)	360-2815 Pin (QTY 2)	360-2814 Pin (QTY 2)	360-2813 Pin (QTY 2)	360-2814 Pin (QTY 2)	360-2813 Pin (QTY 2)	372-5085 Pin Assembly (QTY 2)	360-2816 Pin (QTY 2)	360-2816 Pin (QTY 2)												
432	L7E																										
434	L7K	380-2565 Pin	380-2571 Pin (QTY 2)	378-8852 Pin Assembly (QTY 2)	380-2571 Pin (QTY 2)	378-8852 Pin Assembly (QTY 2)	380-2566 Pin (QTY 2)	384-5429 Pin (QTY 2)	380-2567 Pin (QTY 2)	380-2566 Pin (QTY 2)	380-2567 Pin (QTY 2)	380-2566 Pin (QTY 2)	380-2570 Pin Assembly (QTY 2)	380-2767 Pin (QTY 2)	380-2569 Pin (QTY 2)												
444	L7M																										
Bearings																											
Sales Model	Serial Number Prefix	B Arm	C Arm	D	E	F	G	H	J	K	U	Y															
428	L7D	9R-0411 Bushing (QTY 4)	9R-0153 Bushing (QTY 4)	9R-0153 Bushing (QTY 4)	9R-0153 Bushing (QTY 4)	9R-0411 Bushing (QTY 4)	9R-0153 Bushing (QTY 4)	9R-0411 Bushing (QTY 4)	9R-0153 Bushing (QTY 4)	362-5024 Bushing (QTY 4)	9R-3700 Bushing (QTY 4)	362-5024 Bushing (QTY 4)															
432	L7E																										
434	L7K	9R-3700 Bushing (QTY 4)	9R-3700 Bushing (QTY 4)		437-3546 Bushing (QTY 4)	9R-3700 Bushing (QTY 4)	437-3546 Bushing (QTY 4)	9R-3700 Bushing (QTY 4)		436-8719 Bushing (QTY 4)		436-8720 Bushing (QTY 4)															
444	L7M																										
Seals and Grease Fittings																											
Sales Model	Serial Number Prefix	F	H																								
428	L7D	3B-8489 Grease Fitting (QTY 2)	3B-8489 Grease Fitting (QTY 2)																								
432	L7E																										
434	L7K																										
444	L7M																										
Retention Hardware																											
Sales Model	Serial Number Prefix	A	B Coupling	C Coupling	D	E	F	G	H	J	K	U	Y														
428	L7D	128-7903 Spacer (QTY 2) 128-7905 Spacer (QTY 3) 372-5024 Plate (QTY 2) 8T-4139 Bolt (QTY 4) 8T-4223 Washer (QTY 4)	363-2855 Shim (QTY 3) 363-2856 Shim (QTY 2) 7X-0550 Washer (QTY 4) 7X-0590 Washer (QTY 2) 8T-4956 Bolt (QTY 2)	363-2855 Shim (QTY 4) 363-2856 Shim (QTY 4) 7X-0550 Washer (QTY 4) 7X-0590 Washer (QTY 2) 8T-4956 Bolt (QTY 2)	111-4337 Washer (QTY 6) 6V-3213 Retaining Ring (QTY 4) 9R-0158 Washer (QTY 5)	111-4337 Washer (QTY 6) 6V-3213 Retaining Ring (QTY 4) 9R-0158 Washer (QTY 4)	111-4337 Washer (QTY 6) 6V-3213 Retaining Ring (QTY 4) 9R-0158 Washer (QTY 4)	(QTY 10) 111-4337 Washer (QTY 4) 6V-3213 Retaining Ring (QTY 4) 9R-0158 Washer (QTY 4)	111-4337 Washer (QTY 6) 7X-0590 Washer (QTY 2) 8T-4139 Bolt (QTY 2)	373-8390 Shim (QTY 4) 6V-4364 Retaining Ring (QTY 2) 6V-7744 Lock Nut (QTY 2) 7X-0542 Washer (QTY 4) 105-3479 Bolt (QTY 2)	373-8390 Shim (QTY 4) 6V-4364 Retaining Ring (QTY 2) 6V-7744 Lock Nut (QTY 2) 7X-0542 Washer (QTY 6) 105-3479 Bolt (QTY 2)																
432	L7E																										
434	L7K															222-7100 Washer (QTY 2) 222-7101 Washer (QTY 3) 379-3930 Plate 398-9220 Bracket Assembly 285-6125 Bolt (QTY 4) 7X-0510 Washer (QTY 4)	383-1329 Shim (QTY 3) 383-1328 Shim (QTY 6) 7X-0550 Washer (QTY 4) 7X-0590 Washer (QTY 2) 8T-4956 Bolt (QTY 2)	383-1329 Shim (QTY 3) 383-1328 Shim (QTY 5) 7X-0550 Washer (QTY 4) 7X-0590 Washer (QTY 2) 8T-4956 Bolt (QTY 2)	111-4337 Washer (QTY 6) 6V-3213 Retaining Ring (QTY 4) 9R-0158 Washer (QTY 4)	111-4337 Washer (QTY 4) 6V-3213 Retaining Ring (QTY 6) 9R-0158 Washer (QTY 6)	373-8390 Shim (QTY 6) 6V-4364 Retainer (QTY 4) 7X-0542 Washer (QTY 4)	111-4337 Washer (QTY 10) 6V-3213 Retaining Ring (QTY 4) 9R-0158 Washer (QTY 4) 380-2914 Spacer (QTY 4)	(QTY 6) 373-8390 Shim (QTY 4) 6V-4364 Retainer (QTY 4) 7X-0542 Washer	(QTY 6) 111-4337 Washer (QTY 4) 6V-3213 Retaining Ring (QTY 4) 9R-0158 Washer	8T-4139 Bolt (QTY 2) 7X-0590 Washer (QTY 2) 398-8241 Spacer 392-8258 Shim (QTY 2)	108-4282 Bolt (QTY 2) 6V-7744 Washer (QTY 2) 9R-5437 Washer (QTY 6) 210-1707 Shim (QTY 2) 6V-8344 Retaining Ring (QTY 2)	108-4282 Bolt (QTY 2) 6V-7744 Washer (QTY 2) 9R-5437 Washer (QTY 6) 210-1707 Shim (QTY 2) 6V-8344 Retaining Ring (QTY 2)
444	L7M																										

SIDE SHIFT STABILIZERS

Linkage Pins			
Sales Model	Serial Number Prefix	21	22
428	L7D	330-9669 Pin (QTY 2)	425-1825 Pin Assembly (QTY 2)
432	L7E		
434	L7K		
444	L7M		
Retention Hardware			
Sales Model	Serial Number Prefix	21	22
428	L7D	325-7563 Spacer (QTY 4) 6V-5204 Retaining Ring (QTY 4)	6V-3213 Retaining Ring (QTY 2)
432	L7E		
434	L7K		
444	L7M		

EXCAVATOR LINKAGE

Linkage Pins																													
Sales Model	Serial Number Prefix	Stick Type Standard Stick: Areas 4,5,6,7 Extendable Stick: Areas 4,5,6,7,13 and 14	Linkage Type (Areas 7,8,9,10 and 11)	1	2	4	5	6	7	8	9	10	11	12	13	14	15	16	17	18									
428	L7D	Standard	Cast	386-3778 Pin Assembly	316-6945 Pin	316-6946 Pin Assembly	316-6947 Pin	328-9650 Pin	320-9164 Pin	154-5280 Pin	320-9241 Pin	154-5279 Pin	328-5234 Pin	326-0089 Pin Assembly	-	-	316-6951 Pin Assembly	316-6952 Pin	310-0851 Pin (QTY 2)	381-8085 Cylinder Assembly (Right) 381-8086 Cylinder Assembly (Left)									
			Fabricated						333-0790 Pin	9R-9105 Pin Assembly	333-0791 Pin	9R-9105 Pin Assembly	333-0792 Pin		-	-													
		Extendable 14 ft	Cast					316-6948 Pin	320-9164 Pin	154-5280 Pin	320-9241 Pin	154-5279 Pin	328-5234 Pin		316-6949 Pin	316-6949 Pin													
			Fabricated						333-0790 Pin	9R-9105 Pin Assembly	333-0791 Pin	9R-9105 Pin Assembly	333-0792 Pin		-	-													
432	L7E	Standard	Cast					386-3778 Pin Assembly	316-6945 Pin	355-1394 Pin Assembly	333-4760 Pin	328-9650 Pin	320-9164 Pin		154-5280 Pin	320-9241 Pin					154-5279 Pin	328-5234 Pin	326-0089 Pin Assembly	-	-	316-6951 Pin Assembly	316-6952 Pin	310-0851 Pin (QTY 2)	381-8085 Cylinder Assembly (Right) 381-8086 Cylinder Assembly (Left)
			Fabricated										333-0790 Pin		9R-9105 Pin Assembly	333-0791 Pin					9R-9105 Pin Assembly	333-0792 Pin		-	-				
		Extendable 16 ft	Cast									316-6948 Pin	320-9164 Pin		154-5280 Pin	320-9241 Pin					154-5279 Pin	328-5234 Pin		316-6949 Pin	316-6949 Pin				
			Fabricated										333-0790 Pin		9R-9105 Pin Assembly	333-0791 Pin					9R-9105 Pin Assembly	333-0792 Pin		-	-				
434	L7K	Standard	Cast	386-3778 Pin Assembly	316-6945 Pin	316-6946 Pin Assembly	316-6947 Pin			328-9650 Pin	320-9164 Pin	154-5280 Pin	320-9241 Pin	154-5279 Pin	328-5234 Pin	326-0089 Pin Assembly	-	-	316-6951 Pin Assembly	316-6952 Pin	310-0851 Pin (QTY 2)	381-8085 Cylinder Assembly (Right) 381-8086 Cylinder Assembly (Left)							
			Fabricated								333-0790 Pin	9R-9105 Pin Assembly	333-0791 Pin	9R-9105 Pin Assembly	333-0792 Pin		-	-											
		Extendable 14 ft	Cast							316-6948 Pin	320-9164 Pin	154-5280 Pin	320-9241 Pin	154-5279 Pin	328-5234 Pin		316-6949 Pin	316-6949 Pin											
			Fabricated								333-0790 Pin	9R-9105 Pin Assembly	333-0791 Pin	9R-9105 Pin Assembly	333-0792 Pin		-	-											
444	L7M	Standard	Cast			386-3778 Pin Assembly	316-6945 Pin	355-1394 Pin Assembly	333-4760 Pin	328-9650 Pin	320-9164 Pin	154-5280 Pin	320-9241 Pin	154-5279 Pin	328-5234 Pin		326-0089 Pin Assembly	-					-	316-6951 Pin Assembly	316-6952 Pin	310-0851 Pin (QTY 2)	381-8085 Cylinder Assembly (Right) 381-8086 Cylinder Assembly (Left)		
			Fabricated								333-0790 Pin	9R-9105 Pin Assembly	333-0791 Pin	9R-9105 Pin Assembly	333-0792 Pin			-					-						
		Extendable 16 ft	Cast							316-6948 Pin	320-9164 Pin	154-5280 Pin	320-9241 Pin	154-5279 Pin	328-5234 Pin			316-6949 Pin					316-6949 Pin						
			Fabricated								333-0790 Pin	9R-9105 Pin Assembly	333-0791 Pin	9R-9105 Pin Assembly	333-0792 Pin			-					-						

EXCAVATOR LINKAGE

Bearings																															
Sales Model	Serial Number Prefix	Stick Type Standard Stick: Areas 4,5,6,7 Extendable Stick: Areas 4,5,6,7,13 and 14	Linkage Type (Areas 7,8,9,10 and 11)	1	2	3	4	5	6	7	8	9	10	11	12	15	16	17	18												
428	L7D	Standard	Cast	331-1521 Bushing (QTY 2)	212-8960 Bearing (QTY 2)	215-1906 Bushing (QTY 2)	213-6683 Bushing (QTY 2)	331-1520 Bearing	9R-3092 Bearing (QTY 2)	9R-3092 Bushing (QTY 2)	9R-0162 Bushing (QTY 2)	9R-3092 Bushing (QTY 2)	213-6703 Bearing (QTY 2)	9R-0139 Bushing (Lifting Eye) (QTY 2) 9R-0170 Bushing (without Lifting Eye) (QTY 2)	331-1520 Bearing	331-1521 Bushing	331-1522 Bushing	213-6702 Bushing (Frame-Swing) (QTY 4) 274-4274 Bushing (Rod End) (QTY 2)	9R-4110 Bushing (Frame-Sliding) (QTY 4) 9T-2883 Bushing (Cylinder-Trunnion) (QTY 4)												
			Fabricated								9R-7891 Bearing (QTY 2)		9R-0147 Bushing (QTY 2)	9R-0170 Bushing (QTY 2)																	
		Extendable 14 ft	Cast								9R-0162 Bushing (QTY 2)		213-6703 Bearing (QTY 2)	9R-0139 Bushing (Lifting Eye) (QTY 2) 9R-0170 Bushing (without Lifting Eye) (QTY 2)																	
			Fabricated								9R-7891 Bearing (QTY 2)		9R-0147 Bushing (QTY 2)	9R-0170 Bushing (QTY 2)																	
432	L7E	Standard	Cast				331-1521 Bushing (QTY 2)	212-8960 Bearing (QTY 2)			215-1906 Bushing (QTY 2)		9R-4602 Bearing (QTY 2)	333-7450 Bearing						9R-3092 Bearing (QTY 2)	9R-3092 Bushing (QTY 2)	9R-0162 Bushing (QTY 2)	9R-3092 Bushing (QTY 2)	213-6703 Bearing (QTY 2)	9R-0139 Bushing (Lifting Eye) (QTY 2) 9R-0170 Bushing (without Lifting Eye) (QTY 2)	331-1520 Bearing	331-1521 Bushing	331-1522 Bushing	213-6702 Bushing (Frame-Swing) (QTY 4) 274-4274 Bushing (Rod End) (QTY 2)	9R-4110 Bushing (Frame-Sliding) (QTY 4) 9T-2883 Bushing (Cylinder-Trunnion) (QTY 4)	
			Fabricated										213-6683 Bushing (QTY 2)									9R-7891 Bearing (QTY 2)		9R-0147 Bushing (QTY 2)	9R-0170 Bushing (QTY 2)						
		Extendable 16 ft	Cast										9R-4602 Bearing (QTY 2)									9R-0162 Bushing (QTY 2)		213-6703 Bearing (QTY 2)	9R-0139 Bushing (Lifting Eye) (QTY 2) 9R-0170 Bushing (without Lifting Eye) (QTY 2)						
			Fabricated										9R-7891 Bearing (QTY 2)									9R-0147 Bushing (QTY 2)		9R-0170 Bushing (QTY 2)							
434	L7K	Standard	Cast	331-1521 Bushing (QTY 2)	212-8960 Bearing (QTY 2)	215-1906 Bushing (QTY 2)			213-6683 Bushing (QTY 2)	331-1520 Bearing		9R-3092 Bearing (QTY 2)	9R-3092 Bushing (QTY 2)		9R-0162 Bushing (QTY 2)	9R-3092 Bushing (QTY 2)	213-6703 Bearing (QTY 2)	9R-0139 Bushing (Lifting Eye) (QTY 2) 9R-0170 Bushing (without Lifting Eye) (QTY 2)	331-1520 Bearing			331-1521 Bushing		331-1522 Bushing	213-6702 Bushing (Frame-Swing) (QTY 4) 274-4274 Bushing (Rod End) (QTY 2)						9R-4110 Bushing (Frame-Sliding) (QTY 4) 9T-2883 Bushing (Cylinder-Trunnion) (QTY 4)
			Fabricated												9R-7891 Bearing (QTY 2)		9R-0147 Bushing (QTY 2)	9R-0170 Bushing (QTY 2)													
		Extendable 14 ft	Cast												9R-0162 Bushing (QTY 2)		213-6703 Bearing (QTY 2)	9R-0139 Bushing (Lifting Eye) (QTY 2) 9R-0170 Bushing (without Lifting Eye) (QTY 2)													
			Fabricated												9R-7891 Bearing (QTY 2)		9R-0147 Bushing (QTY 2)	9R-0170 Bushing (QTY 2)													
444	L7M	Standard	Cast				331-1521 Bushing (QTY 2)	212-8960 Bearing (QTY 2)	215-1906 Bushing (QTY 2)	9R-4602 Bearing (QTY 2)	333-7450 Bearing			9R-3092 Bearing (QTY 2)	9R-3092 Bushing (QTY 2)		9R-0162 Bushing (QTY 2)	9R-3092 Bushing (QTY 2)		213-6703 Bearing (QTY 2)	9R-0139 Bushing (Lifting Eye) (QTY 2) 9R-0170 Bushing (without Lifting Eye) (QTY 2)		331-1520 Bearing			331-1521 Bushing	331-1522 Bushing	213-6702 Bushing (Frame-Swing) (QTY 4) 274-4274 Bushing (Rod End) (QTY 2)	9R-4110 Bushing (Frame-Sliding) (QTY 4) 9T-2883 Bushing (Cylinder-Trunnion) (QTY 4)		
			Fabricated														9R-7891 Bearing (QTY 2)			9R-0147 Bushing (QTY 2)	9R-0170 Bushing (QTY 2)										
		Extendable 16 ft	Cast														9R-0162 Bushing (QTY 2)			213-6703 Bearing (QTY 2)	9R-0139 Bushing (Lifting Eye) (QTY 2) 9R-0170 Bushing (without Lifting Eye) (QTY 2)										
			Fabricated														9R-7891 Bearing (QTY 2)			9R-0147 Bushing (QTY 2)	9R-0170 Bushing (QTY 2)										

EXCAVATOR LINKAGE

Seals and Grease Fittings					
Sales Model	Serial Number Prefix	1	7	15	16
428	L7D	3B-8489 Grease Fitting (QTY 2)	3B-8489 Grease Fitting (QTY 2)	3B-8489 Grease Fitting	3B-8489 Grease Fitting
432	L7E				
434	L7K				
444	L7M				

EXCAVATOR LINKAGE

Retention Hardware																								
Sales Model	Serial Numer Prefix	Stick Type Standard Stick: Areas 4,5,6,7 Extendable Stick: Areas 4,5,6,7,13 and 14	Linkage Type (Areas 7,8,9,10 and 11)	1	2	4	5	6	7	8	9	10	11	12	13	14	15	16	17	18				
428	L7D	Standard	Cast							3B-5319 Cotter Pin (QTY 2) 9R-1510 Washer (QTY 2) 220-7108 Washer (QTY 4)		9R-0158 Washer (QTY 2) 3B-5319 Cotter Pin (QTY 2) 111-4337 Washer (QTY 4)												
			Fabricated							3B-5319 Cotter Pin 9R-0158 Washer 111-4337 Washer (QTY 2)		3B-5319 Cotter Pin 9R-0158 Washer 111-4337 Washer (QTY 2)												
		Extendable 14 ft	Cast			8T-4136 Bolt	095-7950 Retainer (QTY 2)	8T-4195 Bolt 7X-0632 Washer	7X-2543 Bolt	8T-6685 Bolt 8T-4121 Washer (QTY 2)	220-7108 Washer (QTY 2)	3B-5319 Cotter Pin (QTY 2) 9R-1510 Washer (QTY 2) 220-7108 Washer (QTY 4)	220-7108 Washer (QTY 2)	9R-0158 Washer (QTY 2) 3B-5319 Cotter Pin (QTY 2) 111-4337 Washer (QTY 4)	096-5516 Retaining Ring (QTY 2)	8T-4136 Bolt	6V-5204 Retaining Ring (QTY 2) 9R-0158 Washer (QTY 4) 111-4337 Washer (QTY 2)	6V-5204 Retaining Ring (QTY 2)	375-1442 Retaining Ring	8T-4196 Bolt 7X-0632 Washer	270-5290 Bolt			
			Fabricated									3B-5319 Cotter Pin 9R-0158 Washer 111-4337 Washer (QTY 2)		3B-5319 Cotter Pin 9R-0158 Washer 111-4337 Washer (QTY 2)										
432	L7E	Standard	Cast		115-6433 Washer 9R-8291 Spacer (QTY 2)	9R-0481 Washer (QTY 2)	9R-8291 Washer (QTY 2)	8T-4121 Washer 8T-4133 Nut	8T-0389 Lock Nut 8T-4241 Retaining Ring (QTY 2)	8T-4241 Retaining Ring (QTY 2)	3B-5319 Cotter Pin (QTY 2) 9R-1510 Washer (QTY 2) 220-7108 Washer (QTY 4)	8T-4241 Retaining Ring (QTY 2)	9R-0158 Washer (QTY 2) 3B-5319 Cotter Pin (QTY 2) 111-4337 Washer (QTY 4)	210-1707 Shim (QTY 2)										
			Fabricated								3B-5319 Cotter Pin 9R-0158 Washer 111-4337 Washer (QTY 2)		3B-5319 Cotter Pin 9R-0158 Washer 111-4337 Washer (QTY 2)											
		Extendable 16 ft	Cast									3B-5319 Cotter Pin (QTY 2) 9R-1510 Washer (QTY 2) 220-7108 Washer (QTY 4)		9R-0158 Washer (QTY 2) 3B-5319 Cotter Pin (QTY 2) 111-4337 Washer (QTY 4)										
			Fabricated									3B-5319 Cotter Pin 9R-0158 Washer 111-4337 Washer (QTY 2)		3B-5319 Cotter Pin 9R-0158 Washer 111-4337 Washer (QTY 2)										

EXCAVATOR LINKAGE

Retention Hardware (continued)

Sales Model	Serial Number Prefix	Stick Type Standard Stick: Areas 4,5,6,7 Extendable Stick: Areas 4,5,6,7,13 and 14	Linkage Type (Areas 7,8,9,10 and 11)	1	2	4	5	6	7	8	9	10	11	12	13	14	15	16	17	18	
434	L7K	Standard	Cast							220-7108 Washer (QTY 4) 9R-1510 Washer (QTY 2) 3B-5319 Cotter Pin (QTY 2)		9R-0158 Washer (QTY 2) 3B-5319 Cotter Pin (QTY 2) 111-4337 Washer (QTY 4)			-	-					
			Fabricated								3B-5319 Cotter Pin 9R-0158 Washer 111-4337 Washer (QTY 2)		3B-5319 Cotter Pin 9R-0158 Washer 111-4337 Washer (QTY 2)			6V-5204 Retaining Ring (QTY 2) 9R-0158 Washer (QTY 4) 111-4337 Washer (QTY 2)	6V-5204 Retaining Ring (QTY 2)				
		Extendable 14 ft	Cast								220-7108 Washer (QTY 4) 9R-1510 Washer (QTY 2) 3B-5319 Cotter Pin (QTY 2)		9R-0158 Washer (QTY 2) 3B-5319 Cotter Pin (QTY 2) 111-4337 Washer (QTY 4)			-	-				
			Fabricated									3B-5319 Cotter Pin 9R-0158 Washer 111-4337 Washer (QTY 2)		3B-5319 Cotter Pin 9R-0158 Washer 111-4337 Washer (QTY 2)			6V-5204 Retaining Ring (QTY 2) 9R-0158 Washer (QTY 4) 111-4337 Washer (QTY 2)	6V-5204 Retaining Ring (QTY 2)		8T-4196 Bolt 7X-0632 Washer	270-5290 Bolt
444	L7M	Standard	Cast	8T-4136 Bolt 115-6433 Washer 9R-8291 Spacer (QTY 2)	095-7950 Retainer (QTY 2) 9R-0481 Washer (QTY 2)	8T-4195 Bolt 7X-0632 Washer 9R-8291 Washer (QTY 2)	7X-2543 Bolt 8T-4121 Washer 8T-4133 Nut	8T-6685 Bolt 8T-4121 Washer (QTY 2) 8T-0389 Lock Nut 8T-4241 Retaining Ring (QTY 2)	220-7108 Washer (QTY 2) 8T-4241 Retaining Ring (QTY 2)	220-7108 Washer (QTY 4) 9R-1510 Washer (QTY 2) 3B-5319 Cotter Pin (QTY 2)	220-7108 Washer (QTY 2) 8T-4241 Retaining Ring (QTY 2)	9R-0158 Washer (QTY 2) 3B-5319 Cotter Pin (QTY 2) 111-4337 Washer (QTY 4)	096-5516 Retaining Ring (QTY 2) 210-1707 Shim (QTY 2)	8T-4136 Bolt 7X-0632 Washer	-	-	375-1442 Retaining Ring	8T-4196 Bolt 7X-0632 Washer 2U-9234 Bushing 9R-8291 Spacer (QTY 2) 176-0626 Washer (QTY 2)	5P-1076 Washer (QTY 2) 6V-7687 Lock Nut	9R-0481 Washer (QTY 2)	
			Fabricated								3B-5319 Cotter Pin 9R-0158 Washer 111-4337 Washer (QTY 2)		3B-5319 Cotter Pin 9R-0158 Washer 111-4337 Washer (QTY 2)			6V-5204 Retaining Ring (QTY 2) 9R-0158 Washer (QTY 4) 111-4337 Washer (QTY 2)	6V-5204 Retaining Ring (QTY 2)				
		Extendable 16 ft	Cast								220-7108 Washer (QTY 4) 9R-1510 Washer (QTY 2) 3B-5319 Cotter Pin (QTY 2)		9R-0158 Washer (QTY 2) 3B-5319 Cotter Pin (QTY 2) 111-4337 Washer (QTY 4)			-	-				
			Fabricated									3B-5319 Cotter Pin 9R-0158 Washer 111-4337 Washer (QTY 2)		3B-5319 Cotter Pin 9R-0158 Washer 111-4337 Washer (QTY 2)			6V-5204 Retaining Ring (QTY 2) 9R-0158 Washer (QTY 4) 111-4337 Washer (QTY 2)	6V-5204 Retaining Ring (QTY 2)			

LET'S DO THE WORK.™

AEXQ3284
(AME, CIS, ANZP, SE Asia)

June 2021

© 2021 Caterpillar. All Rights Reserved. CAT, CATERPILLAR, LET'S DO THE WORK, their respective logos, "Caterpillar Corporate Yellow," the "Power Edge" and Cat "Modern Hex" trade dress, as well as corporate and product identity used herein, are trademarks of Caterpillar and may not be used without permission.

