

# 2022 BUYER'S GUIDE.

CONSTRUCTION INDUSTRIES  
AFRICA & MIDDLE EAST

Discover our Cat® products.



# CAT®

LET'S DO THE WORK.™

© 2022 Caterpillar. All Rights Reserved. CAT, CATERPILLAR, LET'S DO THE WORK, their respective logos, "Caterpillar Corporate Yellow", the "Power Edge" and Cat "Modern Hex" trade dress as well as corporate and product identity used herein, are trademarks of Caterpillar and may not be used without permission.

# NOW IT CAN BE YOURS.

CAT® 320 GX AND 323 GX EXCAVATORS.

- **SAVE UP TO 20%\* ON MAINTENANCE COSTS**

- **15%\* LESS FUEL CONSUMPTION**



When you choose the Cat® 320 GX or 323 GX Excavator for your jobsite, you get the best of both worlds – an easy-to-operate excavator you can count on to get work done at a lower cost.

Economy, efficiency and a fast payback period are high priorities for Cat customers. The Cat 320 GX and 323 GX Excavators are designed to deliver it all.

\*Fuel consumption and maintenance cost comparisons: 320 GX compared to 320D2 GC/323 GX compared to 320D2 L.

© 2022 Caterpillar. All Rights Reserved. CAT, CATERPILLAR, LET'S DO THE WORK, their respective logos, "Caterpillar Corporate Yellow", the "Power Edge" and Cat "Modern Hex" trade dress as well as corporate and product identity used herein, are trademarks of Caterpillar and may not be used without permission.

**CAT**®  
**LET'S DO THE WORK.™**



**W**elcome to the **Construction Industries 2022 Buyers' Guide** showcasing the impressive lineup of Cat® products for construction.

Images of our products at work and brief specifications for many new models are included along with the current machines in each product family.

This free Buyers' Guide is provided compliments of your dealership. Please

keep it handy for your reference throughout the year and be sure to contact us with any questions or if you would like more details about any of the machines you see here.

To learn more about fuel-efficient, quality-built Cat machines that use the latest technology to deliver greater productivity, reliability and longer service life, contact your local Dealer or visit [cat.com](http://cat.com)

**04** TELEHANDLERS

**05** SKID STEER LOADERS /  
COMPACT TRACK LOADERS

**06** MICRO HYDRAULIC EXCAVATORS

**07** MINI HYDRAULIC EXCAVATORS

**08** SMALL HYDRAULIC EXCAVATORS

**09** MEDIUM HYDRAULIC EXCAVATORS

**10** LARGE HYDRAULIC EXCAVATORS

**12** WHEELED HYDRAULIC EXCAVATORS

**13** MEDIUM DOZERS

**14** LARGE DOZERS

**15** TRACK-TYPE LOADERS

**16** COMPACT WHEEL LOADERS

**17** SMALL WHEEL LOADERS

**18** MEDIUM WHEEL LOADERS

**19** LARGE WHEEL LOADERS

**20** BACKHOE LOADERS

**21** MOTOR GRADERS

**22** WHEEL-TRACTOR SCRAPERS

**23** SOIL COMPACTORS

**24** ASPHALT PAVERS / ASPHALT  
COMPACTION SOLUTIONS

**25** COLD PLANERS /  
ROAD RECLAIMERS

**26** ARTICULATED TRUCKS

**28** OFF-HIGHWAY TRUCKS

**30** ATTACHMENTS



This magazine is published by Caterpillar AME and High Velocity Communications Inc. on behalf of your Cat dealer. Cat Managing Editors, Camille Selles • Publisher, Tim O'Brien • Editor, John Rondy • Art Director, Eric Valk • Director of Client Services, Kelly Pemper. Every attempt has been made to ensure specifications are correct. Because specifications are subject to change without notice, check with us, your Cat dealer, for the latest information and available options. Some photography provided courtesy of Caterpillar Inc. Machines shown may include additional equipment. 2022 Caterpillar. All Rights Reserved. CAT, CATERPILLAR, LET'S DO THE WORK, their respective logos, "Caterpillar Yellow", the "Power Edge" and Cat "Modern Hex" trade dress as well as corporate and product identity used herein, are trademarks of Caterpillar and may not be used without permission. VisionLink® is a trademark of Trimble Navigation Limited, registered in the United States and in other countries.

Machine specifications are subject to change without notice. For additional information please contact your dealership or visit [cat.com](http://cat.com)

# ONE MACHINE NO LIMITS



When you have to do everything, you need a machine that can do anything.  
With our huge range of attachments, you finally have it.

Learn more at [Cat.com](https://www.cat.com)



© 2022 Caterpillar. All Rights Reserved. CAT, CATERPILLAR, LET'S DO THE WORK, their respective logos, "Caterpillar Corporate Yellow", the "Power Edge" and Cat "Modern Hex" trade dress as well as corporate and product identity used herein, are trademarks of Caterpillar and may not be used without permission.

# SKID STEER LOADERS AND COMPACT TRACK LOADERS

**SSL** – 216B3, 226B3, 232D3, 236D3, 242D3, 246D3, 262D3

Gross power from 38 kW to 55.4 kW

**CTL** – 259D3, 279D3, 289D3

Gross power 55.4 kW

**D3 Models only** (points below not relevant to 216B3 and 226B3)

- Gross horsepower – 38 kW to 55.4 kW
- Sealed, pressurized cab for clean and quiet operation.
- Speed sensitive ride control for smoother ride and maximum load retention.
- The Cat exclusive electro-hydraulic system provides precise, responsive and effortless control.
- Continuous flow, creep mode, dual self-level and return maximize productivity and efficiency and reduce fatigue.
- Available with either joystick controls or hand-foot controls
- Smart Attachment technology built into the machine as standard





301.5

# MICRO HYDRAULIC EXCAVATORS

300.9D, 301.5, 301.6, 301.7 CR, 301.8, 302 CR, 302.7 CR

- Expandable width undercarriage models balance the stability of a wide undercarriage with the ability to access tight spaces of a narrower machine.
- Compact radius models reduce the risk of tailswing damage to surroundings and increase safety in restricted areas.
- The hinged blade extensions are pinned to the blade so that they're never misplaced when the blade is set to match the undercarriage width in the retracted position
- Two-point machine lifting provides fast and safe handling, on the Next Generation 301.5, 301.6, 301.7 CR, 301.8 and 302 CR.
- The lower glass is retained in the lift up front window assembly and stored overhead, whereas competitors often have to take the glass out and clip it somewhere behind the seat to get the entire front window open. They still have sliding lower glass.
- Dozer float makes fast ground levelling makes ground levelling and cleanup easier
- Excellent all-around ground level service access simplifies machine maintenance.
- The tilt up cab/ canopy offers quick and easy access to components
- First-to-the-industry offering cab air conditioning on our smallest cab machines; the next generation 301.6, 301.8 and 302 CR cab machines, bringing a level of comfort never before seen in this size class.
- All Cat Next Generation mini excavators (the 300.9D is excluded) are equipped with stick steer, allowing the operator to switch from the traditional travel pedals and levers to joystick control for tracking, improving body position and comfort.



302.7 CR

# MINI HYDRAULIC EXCAVATORS

303E CR, 303.5E CR, 304E2 CR, 305E2 CR, 306.5, 307.5, 310

- Cat 'Power on Demand' hydraulic system maximizes fuel efficiency for all functions without loss of performance.
- Courtesy lighting guides the operator from their machine keeping them safe when leaving jobsite.
- Caterpillar's COMPASS monitor on the E and E2 series machines is easy to read and offers a variety of control options such as a built-in security code system, while the LCD color monitor on the Next Generation 306.5, 307.5 and 310 is equipped with operator preferences, Bluetooth capability, and a Bluetooth key.
- Hydraulic flow control features, such as continuous and adjustable flow, increase attachment versatility.
- An Auto idle setting helps to reduce fuel consumption by switching down engine revs when the machine is not in use.
- Product Link™ Telematics is standard on all models enabling more effective fleet management.
- First-to-the-industry with Stick Steer on the Next Generation 306.5, 307.5 and 310 machines.



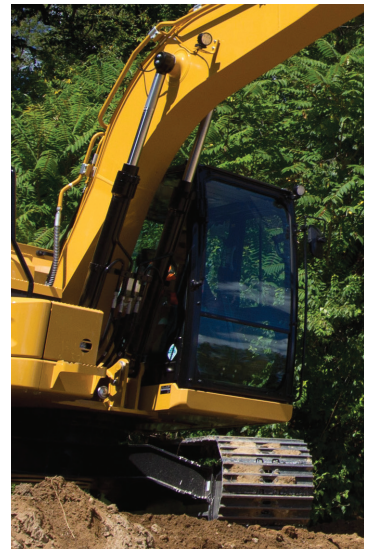
## 307.5



# SMALL HYDRAULIC EXCAVATORS

313D2 L, 313 GC, 318D2 L

- Net Power – 68 kW to 87 kW
- Operating Weights – 13700 kg to 17900 kg
- Powered by fuel-efficient engines and advanced hydraulic systems.
- Cat Connect Technology and a full range of Cat attachments help you complete the work easier and faster.
- Low-effort joystick controls, ergonomically designed cab with easy-to-reach controls and good visibility to reduce operator fatigue.





# 320 GX

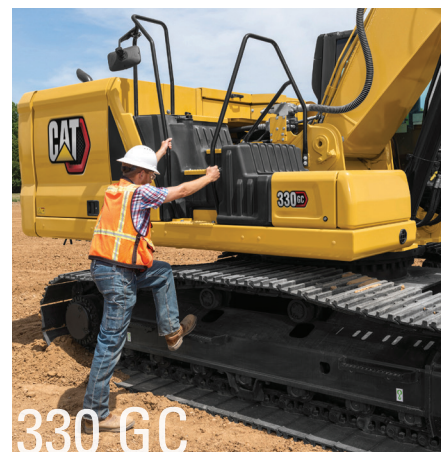
## MEDIUM HYDRAULIC EXCAVATORS

PERFORMANCE LINEUP – 320, 323, 326, 330

GC LINEUP – 320 GC, 323 GC, 330 GC

GX LINEUP – 320 GX, 323 GX

- Performance Lineup - Engine Power – ISO 14396: 118 kW to 195 kW
- GC Lineup - Engine Power – ISO 14396: 108 kW to 159 kW
- GX Lineup - Engine Power – ISO 14396: 108 kW to 129 kW
- Operating Weight: 19700 kg to 33500 kg
- Built on the Next Generation Platform with new design and lower owning and operating costs
- Reduced maintenance costs and great improvement in fuel efficiency
- More choices to fit the right excavator to the right application without any compromise on durability
- Integrated technologies with Ease-of-Use Functions: Cat GRADE 2D with Assist Function, E-fence and Payload system. Available on Performance Lineup
- New cab design with all-round visibility for safer working environment
- Standard features from factory: SMART and POWER engine modes, highly efficient hydraulic system, Cat Link technology, improved filters with longer service intervals
- Multiple configurations available in Mass, Reach, Super Long Reach front linkage



# 330 GC



# 330

# LARGE HYDRAULIC EXCAVATORS

PERFORMANCE LINEUP – 336, 352, 374, 395

GC LINEUP – 336 GC, 345 GC

- Performance Lineup – Engine Power – ISO 14396: 234 kW to 405 kW
- GC Lineup – Engine Power – ISO 14396: 195 kW to 259 kW N
- Operating Weight: 34900 kg to 94100 kg
- Built on the Next Generation Platform with new design and lower owning and operating costs
- Optional integrated technologies with Ease-of-Use Functions. Available on Performance Lineup
- Cat® 336 GC configured with standard or long undercarriage and mass or reach front linkage
- Cat® 345 GC designed for various job requirements with best low-cost per-hour performance
- Cat® 374 and 395 with faster cycle time, 2x times more structural durability, and lower maintenance costs
- Standard features from factory: SMART and POWER engine modes, rear view camera, highly efficient hydraulic system, Cat Link technology, improved filters with longer service intervals
- Annual Product Updates to bring new features and product improvements to customers more quickly
- Multiple configurations available in Mass and Reach front linkage



# OUR RANGE. YOUR RULES.

UP TO **10 %**  
MORE  
PRODUCTIVE

395

374

UP TO **20 %**  
REDUCTION IN  
MAINTENANCE  
COSTS

**2x** MORE  
STRUCTURAL  
DURABILITY

## INTRODUCING THE 374 & 395 NEXT GEN.

Make more money using our new range of large excavators with built-in technology. Designed around you, these Next Generation excavators will transform your jobsites. The new 374 & 395 provide industry lead productivity and fuel efficiency in their size range and have grown in size, operating weight and capability compared with previous models. So get ready to witness the revolution of an entire industry and rewrite the rules of operation. Contact your local dealer to find out more. [#rewritetherules](#)

**LET'S DO THE WORK.™**

© 2022 Caterpillar. All Rights Reserved. CAT, CATERPILLAR, LET'S DO THE WORK, their respective logos, "Caterpillar Corporate Yellow", the "Power Edge" and Cat "Modern Hex" trade dress as well as corporate and product identity used herein, are trademarks of Caterpillar and may not be used without permission.



# WHEELED HYDRAULIC EXCAVATORS

M315D2, M317D2, M320D2, M322D2

- Net Power – 90 kW to 123.5 kW
- Travel Speeds – Up to 37 km/h
- Dedicated swing pump enables greater productivity and lower operating costs. A dedicated variable displacement piston pump and fixed displacement piston motor power the swing drive. This closed hydraulic circuit maximizes swing performance without reducing flow and power to the other hydraulic functions, resulting in smoother combined movements and lower fuel consumption.
- Daily maintenance can be performed from ground level quickly and efficiently while maintaining operator safety.
- Best-in-Class filtration system that is designed for challenging work conditions, even when using lower quality fuel. Industrial grade electrical wiring (SXL type) resists dust, water and vibration to provide durability and increase uptime over the entire life of the machine.
- Best-in-class reach and lifting capacity. Booms and sticks are engineered with strength and the capability to maximize working envelopes in order to perform a wide range of operations effectively, and thereby reduce the need for additional equipment on the jobsite.
- The power boost feature helps customers lift heavy loads for a longer duration while maintaining the required speed, resulting in greater productivity.
- The Integrated Tool Control system enables the operator to select up to 10 pre-set combinations or 20 tools in the case of the M315. This eliminates the need to re-set the hydraulic parameters each time a tool is changed.





D8

# MEDIUM DOZERS

D4, D5, D6R2, D6 GC, D7, D8 GC, D8T

(Emission standards – D4 Tier 3, D5 Tier 3, D6R2 Tier 3, D6 GC Tier 0, D7 Tier 3, D8 GC Tier 1, D8T Tier 3)

- Net Power – 97 kW to 242 kW
- Operating Weights – 13500 kg to 39025 kg
- Standard blade size – 3.31 m<sup>3</sup> to 10.3 m<sup>3</sup>
- The D4 combines best-in-class fuel efficiency with an hydrostatic transmission with the power and precision to excel in a wide range of jobs. This versatile bulldozer features a reliable power train and an overall design that is optimized for finishing.
- The D5, D6R2, D7 and D8T have an electronically controlled power shift transmission, three speed forward and reverse, which endures smooth shifting and the highly maneuverable differential steering provides a single control for all directional and speed choices.
- The D6R2 is equipped with a two-pump hydraulic system enabling simultaneous blade response and steering performance. The differential steering provides smooth turning even with a full blade load. It has fully dedicated configurations for construction, forestry, waste management or agriculture applications.
- The D6 GC is a simple yet reliable, comfortable and economical machine for all type of operations which will excel in both earthmoving and forestry applications.
- The D8 GC has a mechanically controlled power shift transmission, 3 speed forward and reverse. It is designed to be durable, especially in challenging conditions like extreme heat or cold, desert or rocky areas.
- The D8T C15 ACERT™ diesel engine is the most fuel-efficient tractor in its class.
- All dozers offer a choice of undercarriage, blades, rippers, winches, rear drawbar, guarding to best fit your operations.

- All models can be equipped with Product Link™/VisionLink® technologies to maximize machine maintenance, fleet management, uptime and jobsite efficiency.
- Cat Grade with Slope Assist is an option available on the D4 and D5R2 to help operators more easily achieve the required main-fall and slope orientation of the blade by automatically maintaining pre-established blade angles for the grade. The system saves time, increases finish quality and reduces operator input.
- The D4, D5, D6R2, D6 GC, D7, D8 GC and D8T are equipped with an updated cab with integrated Roll Over Protection Structure, providing the operator with greater all-round visibility to enhance safety and productivity.



D6 GC

# LARGE DOZERS

## D9, D9 GC, D10T2, D11

Emission standards – D9 Tier 2, D9 GC Tier 1, D10T2 Tier 2, D11 Tier 2

- Net Power – 302 kW to 634 kW
- Operating Weights – 49988 kg to 104236 kg
- Powerful, rugged, easy-to-service Cat® engines deliver high torque rise and meet or exceed emissions requirements.
- Multiple undercarriage solutions enable you to minimize owning and operating costs on your jobsite. Including Heavy Duty XL with DuraLink and General Duty
- Dependable performance and low operating costs with fuel savings of the new Stator Clutch torque convertor.
- Future-ready-optimized electronic architecture enables 360° vision, high-speed data transfer and semi-autonomous operation on D11.
- Comfortable, ergonomic operator stations enable high production with easy-to-reach controls, Cat Contour Series or Premium Plus seats and excellent view of work area. Push arm grab handles are standard.
- Elevated sprockets isolate final drives from ground impacts—suspended undercarriages put more track on the ground for greater traction, less slippage, smoother ride and longer life.
- Rugged dozer mainframes are heavy, strong and durable.
- Major modular components deliver reliable performance in tough working conditions and are designed for convenient serviceability.



D9



D9 GC



# 973K

## TRACK TYPE LOADERS

953K, 963K, 973K

(Emission standards – Tier 3)

- Net power – 115 to 205 kW
- Standard operating weights – 15642 kg to 28895 kg (up to 32705 kg in Steel Mill configuration)
- Standard Bucket Size: 2.1m<sup>3</sup> to 3.8m<sup>3</sup>.
- The 953K and 963K are equipped with a C7.1 diesel engine, and the 973K is equipped with the C9.3B diesel engine, delivering the power and reliability you need to get the job done. They provide more torque at lower engine speeds for fast machine response under load.
- Track-Type loaders have an hydrostatic drive using variable displacement pumps and drive motors for fast acceleration and infinitely variable speed. The operator can command smooth machine turns and counter-rotation.
- Earthmoving applications: Track loaders are an excellent solution when underfoot conditions are difficult (soft, sharp, uneven or very tight). Their versatility will also excel when multiple tasks are required on your job site, with general purpose or multi-purpose buckets as well as multi-shank rippers. Acting as a complete system this unique machine will do the job with only one operator. You have only one machine to transport, fuel and maintain for land clearing, ripping, scraping, digging, carrying, stock piling, loading, spreading, mixing, grading, levelling.

### Specialized Applications:

- Waste Handlers: machines are equipped with specific guarding, striker bars and seals, cooling system, landfill buckets, allowing the track loader to be a versatile machine for loading, sorting, excavation and spreading cover in landfills or transfer stations.
- Ship Hold: The track loader offers the optimal combination of traction, high reach and machine balance. They have specific guarding, lifting eyes, lighting and specialized implements like coal buckets or trim blades.
- Steel Mill: Factory designed and installed features equip your loader for the extreme heat and harsh conditions of steel mill work. Maneuverability, visibility and the breakout force needed for fast cycle times make track loaders a rugged and efficient choice for handling slag.



914K

# COMPACT WHEEL LOADERS

906K, 908K, 914K, 920K

- Net power – 55 kW to 74 kW
- Operating weights – 5600 kg to 8488 kg
- Optimized Z-bar linkage with parallel lift combines the digging efficiency of a traditional Z-bar with toolcarrier capabilities for powerful performance, versatility and precise control.
- Electro-hydraulic system provides low-effort, precise control to achieve fast cycle times.
- Performance series buckets give you a 110% fill factor and eco mode will save you fuel without sapping performance.
- Pillar-less rear glass, a refined, low-profile rear hood and a rear-view camera provide a full 360° view of the jobsite.



914K



920K

# SMALL WHEEL LOADERS

924K, 930K, 938K

- Net power – 105 kW to 140 kW
- Operating weights – 12019 kg to 15485 kg
- Cat C7.1 ACERT™ engine with configurable auto idle shutdown saves on fuel burn.
- Excellent all-around visibility and low-effort joystick controls.
- Performance Series buckets and optimized Z-bar linkage combine the digging efficiency of a traditional Z-bar with tool carrier capabilities.
- The parallel-lift and high-tilt forces throughout the working range enable you to work safely, and confidently, with precise load handling that makes any work easier.
- Cylinder snubbing and set kick-outs reduce attachment wear.
- Select your preferred powertrain mode via the touch screen, including Torque Converter, Hystat, ICE or Default modes.





# 966 GC

## MEDIUM WHEEL LOADERS

950 GC, 966 GC, 950L, 962L, 966, 972, 980

- Net Power – 151 kW to 303 kW
- Operating Weights – 18392 kg to 30344 kg
- Cat wheel loaders are powered by U.S. EPA Tier 3/EU Stage IIIA equivalent engines—Heavy-duty powershift transmission, includes a torque lockup clutch converter (except 950 GC and 966 GC), advanced system integration matches engine power and hydraulics to maximize machine performance and fuel efficiency.
- The 950 GC & 966 GC provides the full value customers expect from a Cat machine in terms of performance, low fuel consumption, reliability and durability in moderate duty applications; all while being lower cost to own and simpler to operate and maintain.
- Cat Production Measurement, Cat Payload Kit and VisionLink® enable operators and managers to access machine data including bucket payload, fuel consumption, engine idle time and operating hours.
- Aggregate Package, available on 962L and above, enables maximum payloads and fuel efficiency, and optimizes pass match with larger trucks in aggregate re-handling applications; 950L can be equipped with an auxiliary counterweight.
- Electrical and hydraulic service centers (except 966 GC) provide grouped access enhancing safety and convenience while reducing service time. Safe, convenient access to fuel fill, daily maintenance points and many filters means less servicing time required.
- The Cat 966, 972, 980 Wheel Loaders bring premium performance with simple-to-use technology as a standard offering, boosting operator efficiencies and delivering increased productivity. Improved performance, reliability, durability, and versatility result in machines that are better built to meet your needs. Their broadest range of technologies, plus new operator assist features, work together seamlessly to help you boost your productivity.



# 972

# LARGE WHEEL LOADERS

986K, 988K, 990K, 992K, 993K, 994K

- Net Power – 335 kW to 1 297 kW
- Operating Weight – 44810 kg to 242563 kg
- 986K is the perfect replacement for 988B and 988F customers.
- 986K, 988K and 990K are available as Aggregate Handlers, fully dedicated configurations maximizing machine payload in re-handling applications.
- The 986K and the 988K are also available with a Block Handling Arrangement with a lift capacity of up to 54 ton at ground line.
- Improved K Series machines increase productivity and fuel efficiency while reducing emissions, improving operator safety, comfort, serviceability, and reducing owning and operating costs.
- Engines produce more power at lower engine speeds, reducing fuel consumption.
- Designed to effectively pass match off-highway trucks for improved productivity.
- Enhanced structural design for high reliability, durability, multiple rebuilds and high-hour component service lives.
- Ergonomically designed cabs with low-effort controls and world-class visibility to truck beds and hoppers.
- Ground level service access and extended service intervals enhance safety and reduce owning and operating costs.



# BACKHOE LOADERS

426F2, 428, 432, 434, 444

- Net Power – 68.5 kW to 74.5 kW
- Operating Weights – 8275 kg to 9543 kg
- Variable displacement hydraulic pump matches supply to demand, meaning the pump is not always running at full capacity, delivering class-leading fuel efficiency.
- Load-sensing and flow-sharing valves actively manage the flow of oil to each function, so that when the operator selects multiple tasks, the machine responds efficiently providing smooth, effortless operation.
- Differential Lock is standard on all backhoe loaders providing increased traction on poor underfoot conditions and reducing tire wear.
- All Cat Backhoe Loaders have heavy-duty axles that deliver greater durability, low noise levels and superb traction on uneven surfaces.
- All daily service checkpoints are grouped together for easy access; sealed-for-life axles and driveshafts eliminate the need to grease any time-consuming areas beneath the machine.
- The entire range of Backhoe Loaders are equipped with an excavator style boom helping to increase productivity especially when truck loading or working around obstacles.





140 GC

# MOTOR GRADERS

120 GC, 120, 140 GC, 140K, 140, 160K, 150, 160, 14L AWD, 14, 16, 18, 24

- Net Power – 93 kW to 399 kW
- Operating Weights – 15699 kg to 74567 kg
- Introducing the 120 GC lever controlled, Tier 3 motor grader, that provides an alternative solution to the 120 to companies looking for a simpler yet reliable, comfortable and economical machine for all type of operations.
- Economy Mode can save up to 10 percent in fuel while Cat Connect integrated technology and services help you monitor, manage and enhance machine performance in any jobsite conditions.
- The 16, 18 and 24 features the “OK-to-Start” system, which automatically checks the engine coolant, engine oil, and hydraulic levels when the key is turned to the on position.
- Grade Control Cross Slope is an optional, fully integrated, factory-installed system that helps operators improve grading efficiency and more easily maintain accurate cross slopes. This option is offered for joystick controlled machines and 120.
- Cat Advanced Control Joysticks enable operators to control either Cat Grade Control Cross Slope, AccuGrade™, and/or configure auxiliary hydraulic functions, such as ripper, etc. without removing their hands from the joysticks.
- Speed Sensitive Steering automatically makes steering less sensitive as ground speed increases for greater operator confidence and control—this boosts safety and efficiency.
- 120, 140 GC, 150, 160 are available with the All Wheel Drive option.





631K

# WHEEL TRACTOR-SCRAPERS

621K, 623K, 627K, 631K, 637K, 657 (Only available in US EPA Tier 4 Final and EU Stage V)

- Choose from elevated and standard open-bowl designs.
- Heaped Capacities – 17.6 m<sup>3</sup> to 33.6 m<sup>3</sup>
- Maximum Travel Speeds – up to 56 km/h
- Rated Loads – 25038 kg to 47174 kg (25.1 metric Tons to 47.2 metric Ton)
- Single and twin engine-powered machines to meet application conditions.
- Wheel-tractor scrapers provide long life durability, material flexibility, high productivity and controlled material spreading.
- Available technology includes Sequence Assist, \*Load Assist, \*Cat Grade Control, and \*Payload Estimator to enable operators to be more productive in a variety of material types and applications.  
\*Not available on 657.



637K



627K

# SOIL COMPACTORS

**SMOOTH DRUM:** CS10 GC, CS11 GC, CS12 GC, CS54B, CS56B, CS64B, CS68B, CS74B, CS78B, CS79B

**PADFOOT DRUM:** CP11GC, CP12GC, CP54B, CP56B, CP64B, CP68B, CP74B, CP76B

- **Vibratory Soil Compactors** are available with padfoot or smooth drum and feature the robust design and high reliability that Cat machines are known for, plus technological advancements that contribute to jobsite productivity and efficiency.
- Operating Weights – 10 metric Tons to 20 metric Tons.
- Superior compaction performance due to high static linear load and best-in-class amplitude.
- Easy-to-use and simplified controls for easy operation.
- Best-in-class, 360° visibility to the front and rear of machine for safe operation.
- Proven, exclusive, world-class Cat features including the ultra-reliable pod-style vibratory system; the sealed-for-life, maintenance-free hitch bearing; and optional Cat Compaction Control.
- Reliable Cat engines provide ample power and consistent performance. Standard Eco-mode reduces fuel use during normal operation.
- Simple maintenance due to maintenance-free hitch bearings and extended maintenance intervals for vibratory system and hydraulic system, providing more uptime and lower maintenance costs.
- Cat-exclusive compaction technology, MDP (Machine Drive Power), providing operators with a simple indication of compaction completed.
- Optional Cat Compaction Control technology helps the operator determine when compaction has been completed to specification for greater productivity and uniform compaction density. Scalable solution can be configured to meet needs.



## CS12 GC

# ASPHALT PAVERS

AP300F, AP355F, AP400-07, AP455-07, AP500-07, AP555-07, AP600-07, AP655-07, AP1055-07

- **Asphalt Pavers and Screeds** provide a high return on investment and lower owning and operating costs, feature fast-heating screed plates and fuel-efficient engines, and deliver smooth results for wide-width paving.
- Paving Width – 1.7 meters to 10 meters with multiple screed selection.
- Operating Weights – 8.0 metric Tons to 21.8 metric Tons offering the highest weight-in-class for superior tractive effort in asphalt and aggregate paving applications.
- Available with Wheels, Steel Track undercarriage and Cat exclusive Mobil-Trac™ undercarriage options.
- Exclusive, integrated 70 kW generator designed for long life and fast heating screed leading to higher daily production. Heating time as low as 15 minutes.



# ASPHALT COMPACTION SOLUTIONS

**ASPHALT COMPACTORS:** CB7, CB8, CB10, CB13, CB15, CB16

**UTILITY COMPACTORS:** CB1.7, CB1.8, CB2.5, CB2.7, CB2.9, CB34B, CB36B, CC2.6, CC34B

- **Tandem Vibratory Rollers** provide superb mat densities, long intervals between water refills with industry-leading water spray system and a single fill point, dual water pumps, triple filtration, intermittent operation and high capacity. Optional seating choices provide excellent visibility and enhance jobsite safety. Proven pod-style eccentric weight technology patented by Caterpillar.
- Operating Weights – 1.6 metric Tons to 16 metric Tons for the full range of commercial and highway paving applications.

**PNEUMATIC COMPACTORS:** CW16, CW34

- **Pneumatic Tyre Rollers** offer excellent visibility enhancing safety at jobsites, ECO-mode operation, even compaction, and excel on a variety of materials due to flexible air-on-the-run capability. Powertrain with coast feature enables smooth start and stop on asphalt mat, preventing mat damage.
- Operating Weights – 5.2 metric tons to 27 metric tons flexible weight range through modular ballast system.
- Gross horsepower – 75 kW (CW16), 96.5 kW (CW34).





# COLD PLANERS

PM310, PM312, PM313, PM620, PM622, PM820, PM822, PM825

- New Cat **Cold Planers** are easy to use and deliver best-in-class productivity in applications ranging from milling highways to urban streets.
- Milling drum width options 1.0m, 1.2m, 1.3m, 2.0m, 2.2m, 2.5m.
- Heavy-duty powertrain driven by Caterpillar proprietary application designed powerful Cat C9.3 or C18 ACERT™ engines from 246 kW to 563 kW.
- Operating weights between 20 metric Tons and 38 metric Tons offer best in class power-to-weight ratios for superior cutting traction.
- Advanced Milling System with automatic load control and traction control system reduces slippage for optimum cutting performance even in deep plunge-cuts.
- Proprietary Cat Grade Control provides simple, intuitive operation and precise performance with features such as ramp-in, ramp-out capabilities and enhanced flush-cut capability.

# ROAD RECLAIMERS

RM400, RM500B

- **Reclaimers/Stabilizers** with multiple application-specific rotor choices feature superior performance and reliability to achieve the most demanding job specifications in both full-depth road reclamation and soil stabilization applications.
- Reliable, efficient operation driven by powerful Cat ACERT™ engines: 310 kW C9.3B on RM400 and 403 kW C15 on RM500B.
- Cat RMs offer a dependable rotor drive system with a powershift transmission and hydraulic clutch, plus automatic rotor bearing lubrication.



# ARTICULATED TRUCKS

725, 730, 730 EJ, 735, 740 EJ, 740 GC, 745

- Net Power – 249 kW to 367 kW
- Hauling capacities – 15 m<sup>3</sup> to 25.5 m<sup>3</sup>
- New world-class cab with extraordinary comfort and reduced in-cab noise to 72 dB(A).
- Assisted Hoist System for automatic body raise and lower.
- Advanced Automatic Traction Control eliminates wheel slip for maximum traction in poor ground conditions, without any operator interaction.
- Automatic Retarder Control, no lever fitted, provides safe and productive downhill braking.
- Combined Hoist / Transmission Lever enables gear selection, hoist control and park brake in one lever.
- Cat Detect with Stability Assist warns the operator if there is a risk of the machine tipping over.
- Optional Cat Production Measurement system enables operators to view real-time load weights and know precisely when their target payload is achieved.
- The ejector ADT option can offer on-the-go, faster cycle times with lower spreading costs.



# MEET STRENGTH YOU CAN AFFORD.

## INTRODUCING THE CAT® 426F2

People perceive a Cat as being unaffordable, and while that might have been true once, it's not anymore. Introducing the new 426F2- our next generation of backhoe loader created with small businesses in mind. It has all that you'd expect from a Cat - strength, precision, and reliability and with one big difference: affordability.

The 426F2 - unlock your success

[Cat.com/UnlockSuccess](https://cat.com/UnlockSuccess)



© 2022 Caterpillar. All Rights Reserved. CAT, CATERPILLAR, LET'S DO THE WORK, their respective logos, "Caterpillar Corporate Yellow", the "Power Edge" and Cat "Modern Hex" trade dress as well as corporate and product identity used herein, are trademarks of Caterpillar and may not be used without permission.



# OFF-HIGHWAY TRUCKS

770G, 772G, 773E, 773G, 775G, 777E, 777G

## G-SERIES

- Nominal payloads – 42.1 tons to 100 tons
- Net Power – 356 kW to 704 kW
- G-Series comes equipped with Standard Economy Mode, Adaptive Economy Mode, Engine Idle Shutdown and Auto Neutral Idle – features that enable fuel savings to optimize fuel economy throughout the haul cycle.
- The 770G and 772G offer the following options: VIMS™ 3G, Caterpillar's Vital Information Management System; Truck Production Vital Information Management System; Truck Production data; TMPH (Ton Mile-Per-Hour) tire management system to help operate tires within their design specifications; and Product Link™ (Cellular standard).
- G-Series Transmission Control System, Advanced Productivity Electronic Control Strategy (APECS), provides improved shift quality, faster acceleration, better speed on grade and faster cycle times.
- Ideal for construction, quarry and mining applications involving long hauls, off-highway trucks carry large payloads, yielding low cost per ton.





## 773E

- Payload – 61 tons
- Net Power – 537 kW
- Powered with Cat® 3412E engine that offers Standard Economy, suitable for lower to medium gradients that provides optimum fuel economy.
- World-class, ergonomically designed cabin and enhanced technology come with standard Vital Information Management System™ and Truck Payload Monitoring system to manage the machine performance data (machine operating time, fuel consumption & payload) remotely with Product Link™ (optional Cellular or Satellite). This helps customer to lower their cost per ton.
- Planetary Powe Shift transmission with lock-up torque converter provide smoother shifts on grade.
- Enhanced safety features on the machine include increased visibility, 4-point seat belt for operator, and brakes that meet ISO 3450:2011.



## 777E

- Payload – 98.2 tons
- Net Power – 711 kW C32 ACERT™ – EPA Tier2 engine
- E Series machine is powered with updated C32 ACERT™ engine that offers Standard Economy, Engine Idle Shutdown and Delayed Engine Shutdown features that provides optimum fuel economy throughout the haul cycle with increased reliability.
- Lighter empty machine weight with best-in-class payload enables customer to carry more payload to increase productivity.
- World-class, ergonomically designed cabin and enhanced technology come with standard Vital Information Management System™ and Truck Payload Monitoring system to manage the machine performance data (machine operating time, fuel consumption & payload) remotely with Product Link™ (optional Cellular or Satellite). This helps customer to lower their cost per ton.
- ECPC transmission with updated electronics delivers faster, & smoother shifts on grade.
- Enhanced safety features on the machine include increased visibility with additional lights, 4-point seat belt for operator, and brakes that meet ISO 3450:2011.
- Reliable mining truck designed for the toughest applications, also rugged enough for quarry and construction applications. Lower operating cost and durability help ensure economical, dependable operating life.



# ATTACHMENTS

**A**ttachments for Cat machines are the perfect performance match for construction, earthmoving, demolition and many other applications.

Using our high-quality work tools in combination with Cat machines provides you with the right tool for your application and a tool that has been designed to work most efficiently with a Cat machine. No matter which tool

you select from our extensive range of attachments, you benefit from uninterrupted productivity.

A single point of contact for all your machine and attachment needs. And the backing of our unrivaled spare parts and service, and vast dealer network. That's an unbeatable combination. Even our work tools are characterized by their high resale value.



**Blades:** Compact Track Loaders, Multi-Terrain loaders, Dozers and Motorgraders



**Block-Handling Work Tools:** Wheel Loaders



**Compactor Plates:** Backhoe Loaders, Excavators and Wheeled Excavators



**Demolition & Sorting Grapples:** Excavators, Wheeled Excavators and Material Handlers



**Excavator Buckets:** Excavators, Wheeled Excavators, Mini Excavators and Material Handlers



**Hammers:** Skid Steer Loaders, Mini Excavators, Excavators, Wheeled Excavators and Backhoe Loaders



**Hex CW Couplers:** Excavators, Wheeled Excavators and Material Handlers



**Multi-Processors:** Excavators and Wheeled Excavators



**Orange Peel Grapples:** Excavators, Wheeled Excavators and Material Handlers



**Rippers:** Excavators



**Scrap Shears:** Compact Track Loaders, Multi-Terrain loaders, Excavators, Skid Steer Loaders, Wheeled Excavators and Material Handlers



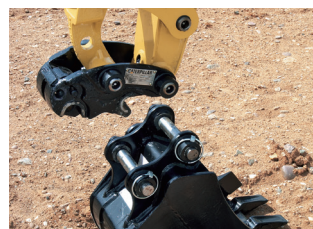
**Wheel Loader Buckets:** Wheel Loaders



**Buckets:** Skid Steer Loaders, Compact Wheel Loaders, Small Wheel Loaders, Mini Excavators, Backhoe Loaders and Telehandlers



**Forks:** Skid Steer Loaders, Compact Wheel Loaders, Small Wheel Loaders, Mini Excavators, Backhoe Loaders and Telehandlers



**Couplers:** Skid Steer Loaders, Compact Wheel Loaders, Small Wheel Loaders, Mini Excavators, Backhoe Loaders and Telehandlers



**Brooms and Accessories:** Skid Steer Loaders, Compact Wheel Loaders, Small Wheel Loaders and Backhoe Loaders



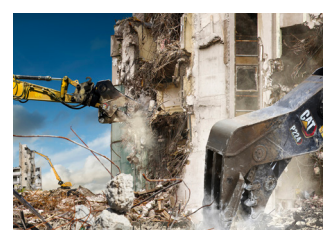
**Cold Planers:** Skid Steer Loaders, Compact Wheel Loaders and Backhoe Loaders



**Mulch and Brush Cutters:** Skid Steer Loaders, Compact Wheel Loaders and Mini Excavators



**Auger and Auger Bits:** Skid Steer Loaders, Compact Wheel Loaders, Mini Excavators and Backhoe Loaders



**Pulverizers :** Primary and Secondary Demolition Pulverizers for excavators.

# HAVE A CRUSH IN 2.6 SECONDS\*

## NEW PRIMARY PULVERIZERS

### UNMATCHED CYCLE TIMES AND FORCE FOR HIGH-PERFORMANCE CONCRETE DEMOLITION

These new generation primary pulverizers use Cat's unique SpeedBooster technology to actively balance speed and power. So you get faster cycle times (up to 52%) and greater force (up to 21%). All three models feature bidirectional 360-degree rotation, so you can grab material from any angle. And with bolt-on wear components for quick field replacement, you'll spend more time working and less on maintenance.

**For more concrete information, contact Caterpillar today!**



## FAST DEMOLITION

\*Cycle time P318.

© 2022 Caterpillar. All Rights Reserved. CAT, CATERPILLAR, LET'S DO THE WORK, their respective logos, "Caterpillar Corporate Yellow", the "Power Edge" and Cat "Modern Hex" trade dress as well as corporate and product identity used herein, are trademarks of Caterpillar and may not be used without permission.



**ADD VALUE TO YOUR  
BUSINESSES.**  
Through CVAs, we offer  
customers the best possible  
service and support.

**CAT**  
LET'S DO THE WORK.™

# ~~DOWNTIME~~ PRODUCTIVITY



## WE'VE GOT YOUR BACK

WITH OUR CAT® CUSTOMER VALUE AGREEMENT (CVA)

Did you know our genuine Cat® Parts can extend your component life by up to 50 percent? Enjoy hassle-free maintenance with parts and instructions delivered right to your location for more machine uptime and productivity.

Get your CVA now and benefit from expert dealer support, peace of mind on equipment health as well as hassle-free maintenance and ownership.

Talk to your local Cat dealer.