

432

BACKHOE LOADER



Engine Power
Operating Weight
Dig Depth
Loader Breakout Force
Controls

74.5 kW U.S. EPA Tier 2 or Tier 3 Equivalent
8444 kg
4778 mm/6169 mm (E-Stick)
54.7 kN
Electro Hydraulic Loader/Pilot Hoe Joysticks



NEW MACHINES, ORIGINAL DNA

The first Cat® backhoe loader hit the road in 1985. The machine was co-developed by a team of designers in Illinois, U.S. and a manufacturing team in Desford, UK. The machines are still designed by experts to meet the needs of today's operators. Every model provides reliability, power and a top-quality operator environment to see you through the toughest projects. The latest backhoe loader range is crafted from 35 years of passion, expertise and experience.

THE NEW

CAT® 432

TAKE CONTROL IN YOUR NEW BACKHOE LOADER



MORE CONTROL FOR YOU

- + **EFFICIENT AND POWERFUL** – POWERED BY A CHOICE OF CAT ENGINES, THIS MACHINE IS DESIGNED TO BE EFFICIENT WITH FUEL WHILST GIVEN THE POWER YOU NEED. HELPING YOU TO BE BOTH PRODUCTIVE WHILST KEEPING YOUR OWNING AND OPERATING COSTS AS LOW AS POSSIBLE.
- + **PILOT CONTROLS** – OPERATE IN COMFORT WITH ERGONOMIC, PILOT CONTROLS MOUNTED ON ADJUSTABLE PODS. THESE ARE DESIGNED TO GIVE YOU MORE CONTROL OVER EVERY MOVE.
- + **MORE VERSATILITY** – WITH A HUGE RANGE OF COUPLER AND WORKTOOL OFFERINGS YOUR BACKHOE IS MORE VERSATILE THAN EVER BEFORE.
- + **EASY TO OWN AND OPERATE** – WITH MONTHLY PAYMENT OPTIONS, GREAT FUEL EFFICIENCY AND BEST-QUALITY PARTS AND ENGINEERING, IT'S EASIER AND MORE AFFORDABLE THAN EVER TO OWN AND OPERATE A CAT BACKHOE LOADER.

POWERFUL LOAD SENSING HYDRAULIC SYSTEM



FLOW-SHARING VALVES

Actively manage the flow of oil between each function of the machine. When the operator demands multiple operations the machine responds, providing smooth, effortless operation.

VARIABLE DISPLACEMENT PISTON PUMP

A high capacity variable displacement piston pump allows for perfect matching of power and operator demand, providing power when it is needed whilst contributing to great fuel economy.

MORE COMFORT AND CONTROL

Pilot Hoe Controls provide smooth operation and comfort to operators. These controls mounted on fully adjustable pods offer the operator finer control with great ergonomics for all day comfort.



BACKHOE

BUILT FOR THE TASK

HIGH-ROTATION LINKAGE

The Cat backhoe linkage provides an industry-leading 205 degrees of bucket rotation. This design helps with material retention when truck loading and with vertical wall-trenching. Improved performance and efficiency are achieved by the ability to do more with less movement.

EXCAVATOR-STYLE BOOM

Whether close-up truck loading or digging over obstacles, the iconic excavator-style boom tackles the toughest jobs with ease. Combine this versatility with powerful breakout forces, controllability, a powerful hydraulic system and the 432 is capable of high levels of productivity with minimum effort. The boom is a narrow design, ensuring maximum visibility to the attachment and ground. The hoe comes with the choice of either a 4.3 m or 4.9 m stick option.

CAT CUSHION SWING

The standard Cat Cushion Swing System smooths the backhoe swing function when returning to the trench. Operators will immediately appreciate being able to line up the bucket edge on the trench wall faster and with more control.

SIDE SHIFT FRAME

The Side Shift Frame has exterior lock clamps, with no disassembly needed when servicing. The frame is a solid design with E-Coat protection preventing material build up in the frame, reducing the risk of rust and increasing the life of the frame.

EXTENDIBLE STICK

The extendible stick comes as an option for applications where more versatility is needed. Increasing dig depth and reach capability by 922 mm reduces the amount of machine repositioning and therefore reducing site damage and increasing productivity. A sliding inner section design helps to ensure the wear pads remain as dirt free as possible, prolonging adjustment and replacement intervals. Auxiliary lines, for operating hydraulic attachments, have been routed so that they are protected from damage when working in the narrowest of trenches.

POWERED SIDE SHIFT (OPTIONAL)

Available as an option either from the factory or as a dealer fitted kit, the powered side shift solution provides a hydraulic service to allow the operator to easily position the backhoe across the full width of the Side Shift Frame. Ideal for use in areas with minimal space and utility applications such as gas, electrical, and telecoms.

POWER TRAIN

POWERFUL, PROVEN AND EFFICIENT

PROVEN CAT ENGINE

All Cat backhoe loaders (BHLs) are powered with a proven and reliable Cat engine. There are two engine options, the EU Stage II/ U.S. Tier 2 Cat 3054C engine or the EU Stage IIIA/U.S. Tier 3 Cat C4.4 engine both powered at 74.5 kW. Both the options deliver superior performance with best in class fuel efficiency.

FUEL ECONOMY MODES

The operator can choose between Eco Mode, or Standard Mode depending on job and site conditions. Eco mode will save the operator fuel, lowering their owning and operating costs whilst Standard Mode will help get the job done as quickly as possible.

TRANSMISSIONS

A 4-speed powershift transmission comes as standard on the 432. Improved operator comfort and reduced fatigue is achieved by operation through the Power Shuttle Lever, rather than floor mounted lever, to shift gears. The 6-speed automatic shift transmission is available as an option, providing greater efficiency by ensuring that the correct gear is always selected. The Lock-up Torque Converter option is ideal for those who do a lot of roading as it can give up to 15% fuel efficiency savings on the road and maintain travel speed in hilly environments.

AXLES AND DIFFERENTIAL LOCK

Heavy duty axles and a 100% locking rear differential come as standard on Cat backhoe loaders. The axles provide high durability whilst providing superb traction on uneven surfaces. No daily greasing is required on the front axle helping to save both time and money, keeping owning and operating costs as low as possible. The Diff-lock improves performance by giving maximum traction in all conditions.



LOADER PERFORMANCE

MAKING LIGHT WORK OF LIFTING AND LOADING



PARALLEL LIFT

Parallel lift loader arms offer excellent forward visibility and self-leveling, ensuring excellent material retention throughout the lift and lower cycles.

RIDE CONTROL

This option offers loader suspension to improve operator comfort and productivity. When moving around the job site or transporting the machine on the road, ride control provides extra stability which creates an easier ride for the operator and helps material retention to improve operator efficiency.

RETURN TO DIG

Return to Dig allows the operator to return the bucket to a preset level, this is great for applications with repetitive work cycles especially when working with forks.

IT QUICK COUPLER

This option is available from the factory or as a kit, providing the extra versatility needed when working in multiple applications. This coupler allows a quick and safe change between multiple attachments from the inside of the cab.

THE CLASS LEADING OPERATOR ENVIRONMENT JUST GOT BETTER

YOUR OFFICE YOUR RULES

MACHINE SECURITY SOFTWARE

The optional keypad security system is specifically designed for use with Cat backhoe loaders. This device helps keep your machine safe and can hold up to 25 unique codes for all operators. The system can even be added at a later date if not initially equipped on your machine.



OPERATOR COMFORT

To reduce operator fatigue and increase efficiency, the air suspension seat comes as standard with switches and controls being ergonomically located within reach of the operator. Great visibility allows the operator to get the job done in a safe and efficient manner, whilst the cab is surrounded by flat glass to ensure any replacements are quick and not costly.



ELECTRO – HYDRAULIC LOADER CONTROL

The new Electro Hydraulic Loader control gives you everything you need at your fingertips. Differential lock, forward, neutral and reverse switch, transmission kickout and auxiliary control are all handily located on the loader control helping you be more productive than ever before.



ATTACHMENTS

A WIDE RANGE OF CATERPILLAR ATTACHMENTS ARE AVAILABLE TO MEET THE NEEDS OF YOUR JOB SITE APPLICATIONS.

Our attachments are engineered, balanced and tested to each Cat backhoe loader model, promising to minimize stress and optimize performance.

LOADER BUCKETS

General Purpose loader buckets are available as well as the hydraulically operated Multi-Purpose bucket.

OTHER AVAILABLE LOADER TOOLS INCLUDE:

- + BROOMS
- + MATERIAL HANDLING ARMS
- + TRUSS BOOMS
- + FORKS
- + BLADES

EXCAVATING BUCKETS

Cat Attachments provide a range of buckets in various sizes. It is easy to find the correct bucket for the application with a range including:

- + STANDARD DUTY
- + HEAVY DUTY
- + HIGH CAPACITY HD
- + DITCH CLEANING
- + CRIBBING
- + GRADING

OTHER AVAILABLE BACKHOE TOOLS INCLUDE:

- + COLD PLANERS
- + HAMMERS
- + AUGERS
- + VIBRATORY COMPACTION PLATES
- + RIPPER

BACKHOE QUICK COUPLER

Manual or hydraulic backhoe couplers make rear tool exchange quick, easy and safe. Cat dual-lock couplers have a self-adjusting wedge design to ensure a tight fit. They also feature a safety lock which automatically engages.



EASY TO OPERATE

EASY TO MAINTAIN

DAILY SERVICE POINTS

Caterpillar understands that the easier a task is the more likely it is to be done. We have ensured that servicing the Cat backhoe loader is as simple as it can be. All daily fluid check points are grouped together and are easy to access from a large service platform.

HINGED COOLING PACK

The hood opens to reveal the engine and a unique Cat designed hinged cooling pack. The air conditioning pack lifts up and the radiator tilts forward with no tooling required, giving easy access for debris removal whether you are in the workshop or on a job site, keeping optimal cooling performance.

WEAR PAD ADJUSTMENTS

The Extendible Stick (E-Stick) is designed to be self-lubricating, to minimize the need for operator interaction. The stabilizers and E-Stick all have easily adjustable wear pads that require no disassembly. When wear pad adjustments are necessary, the adjustment bolts are easy to access, taking minutes to complete.

CAT FILTERS

All Cat filters are vertically mounted for spill free servicing and reduced oil contamination. These low micron filters remove microscopic particles from the oil, keeping the engine, transmission and hydraulic system running smoothly for years.

A-PIN GREASING

A-Pin grease point has been relocated to give ground level access without needing access to the engine bay, reducing time spent maintaining the machine.

BATTERY/STORAGE BOX

The batteries and battery disconnect switch are conveniently located in the external right hand side lockable storage box for easy access. The box also leaves sufficient space to be able to store grease gun, spanner, etc.



YOUR MACHINE

YOUR SUPPORT



MACHINE SELECTION

Your dealer can help you with your machine purchase decision, based on your requirements and help keep operating costs to a minimum. Is the machine you have in mind exactly the best for your job, or could there be a more suitable solution?

CUSTOMER VALUE AGREEMENTS (CVA'S)

Your Cat dealer can offer a comprehensive range of CVA's which can be individually tailored to suit your requirements. Dealers can offer a range of options from a full preventative maintenance with S-O-SSM package to a parts only CVA. Protect your valuable investment and know exactly what your monthly payments will be to help you run your business.

EQUIPMENT PROTECTION PLAN (EPP)

You count on your Cat machines to get the job done, day in and day out. Choose a protection plan that's just as dependable and long-lasting. EPP offers the only coverage designed specifically for new Cat equipment – giving you the highest level of repair cost protection available. Talk to your dealer today to find out what EPP solution is the best for you!

FINANCE

Have you explored the range of options available from your dealer to finance your machine? They can offer a selection of attractive packages tailored to suit your every requirement.

TRAINING AND SUPPORT

Speak to your dealer about any additional support you may need. They can give you the latest in operating techniques to minimize wear and tear, maximize productivity, lower owning and operating costs and help you make the most of the fantastic features offered on the Cat backhoe loaders.

PRODUCT LINK™

Product Link™ comes as standard on all Cat BHL (dependent on local regulations). Cat Product Link offers service meter hours and location, helping you to keep control of your machine.

TECHNICAL SPECIFICATIONS

See *cat.com* for complete specifications.

ENGINE	432 STANDARD OFFERING TIER 2 EQUIVALENT	432 OPTIONAL OFFERING TIER 3 EQUIVALENT
Engine	3054C 74.5 kW Mechanical Turbo	C4.4 74.5 kW Electronic Turbo Intercooled
Ratings at 2,200 rpm		
Gross Power SAE J1995	75 kW/102 hp	76 kW/104 hp
Gross Power ISO 14396	74.5 kW/101 hp	74.5 kW/101 hp
Net Power Rating @ 2,200 rpm		
SAE J1349	70 kW/95 hp	69 kW/94 hp
ISO 9249	71 kW/96 hp	70 kW/95 hp
Torque Rise (net)	31% @ 1,400 rpm	32% @ 1,400 rpm
Net Torque – SAE J1349	397 N·m	398 N·m
Bore	105 mm	105 mm
Stroke	127 mm	127 mm
Displacement	4.4 L	4.4 L
No De-Rating Required Up To	2286 m	2286 m

• Net power advertised is the power available at the flywheel when the engine is equipped with fan, air cleaner, muffler and alternator.

TRANSMISSION	POWERSHIFT TRANSMISSION (STANDARD)	AUTO-SHIFT TRANSMISSION (OPTIONAL)	AUTO-SHIFT TRANSMISSION WITH LOCK-UP TORQUE CONVERTER (OPTIONAL)
Travel speeds of backhoe loader at full throttle, when equipped with 480/80-26 rear tires.			
Forward			
1st	6 km/h	6 km/h	6 km/h
2nd	10 km/h	10 km/h	10 km/h
3rd	20 km/h	13 km/h	13 km/h
4th	40 km/h	20 km/h	20 km/h
5th	—	27 km/h	27 km/h
6th	—	40 km/h	40 km/h
Reverse			
1st	6 km/h	6 km/h	6 km/h
2nd	13 km/h	13 km/h	13 km/h
3rd	27.3 km/h	27.3 km/h	27.3 km/h
4th	—	—	—

TECHNICAL SPECIFICATIONS

See *cat.com* for complete specifications.

AXLE RATINGS	
Front Axle	
Static	23 500 kg
Dynamic	9000 kg
Rear Axle	
Static	26 500 kg
Dynamic	10 000 kg

WEIGHTS*		
Operating Weight*	8444 kg	
Operating Weight (maximum) (ROPS capacity)	11 000 kg	
Cab, ROPS/FOPS	Standard	
Powershift Transmission	Standard	
Ride Control	15 kg	
Air Conditioning	Standard	
MP Bucket (1.03 m ³)		
with Fold-over Forks	860 kg	
without Fold-over Forks	674 kg	
Loader QC	185 kg	
4.3 m Extendible Stick	199 kg	
4.9 m Extendible Stick	355 kg	
Counterweights		
Base	115 kg	
Stackable, One	240 kg	
Maximum	460 kg	
Minimum Counterweight Recommendations – Standard Stick		
Loader Bucket	No QC	IT Loader with QC
GP	240 kg	460 kg
MP	0 kg	460 kg
Minimum Counterweight Recommendations – Extendible Stick		
Loader Bucket	No QC	IT Loader with QC
GP	460 kg	460 kg
MP	115 kg	460 kg
Total Gross Weight Not to Exceed	11 000 kg	
*Machine Configuration – LRC 74.5 kW engine; 4.3 m standard stick hoe; standard cab with A/C; AWD powershift transmission; 1.03 m ³ MP loader bucket; 600 mm standard duty hoe bucket; 340/80-18 and 440/80-28 tires; no counterweight; One Way Aux Lines; AWD Guard; Front Fenders; HD Battery; 80 kg operator; full fuel tank.		

HYDRAULIC SYSTEM	
Type	Closed Center
Pump Type	Variable-Flow, Axial Piston
Pump Capacity @ 2,200 rpm	187 L/min
System Pressure	
Backhoe	250 bar
Loader	250 bar

STEERING	
Type	Front Wheel
Power Steering	Hydrostatic
AWD Cylinder, One (1) Double-acting	
Bore	65 mm
Stroke	106 mm
Rod Diameter	40 mm
Axle Oscillation	11 mm
Turning Circle	
Outside Front Wheels	8205 mm
Outside Widest Loader Bucket	10 745 mm

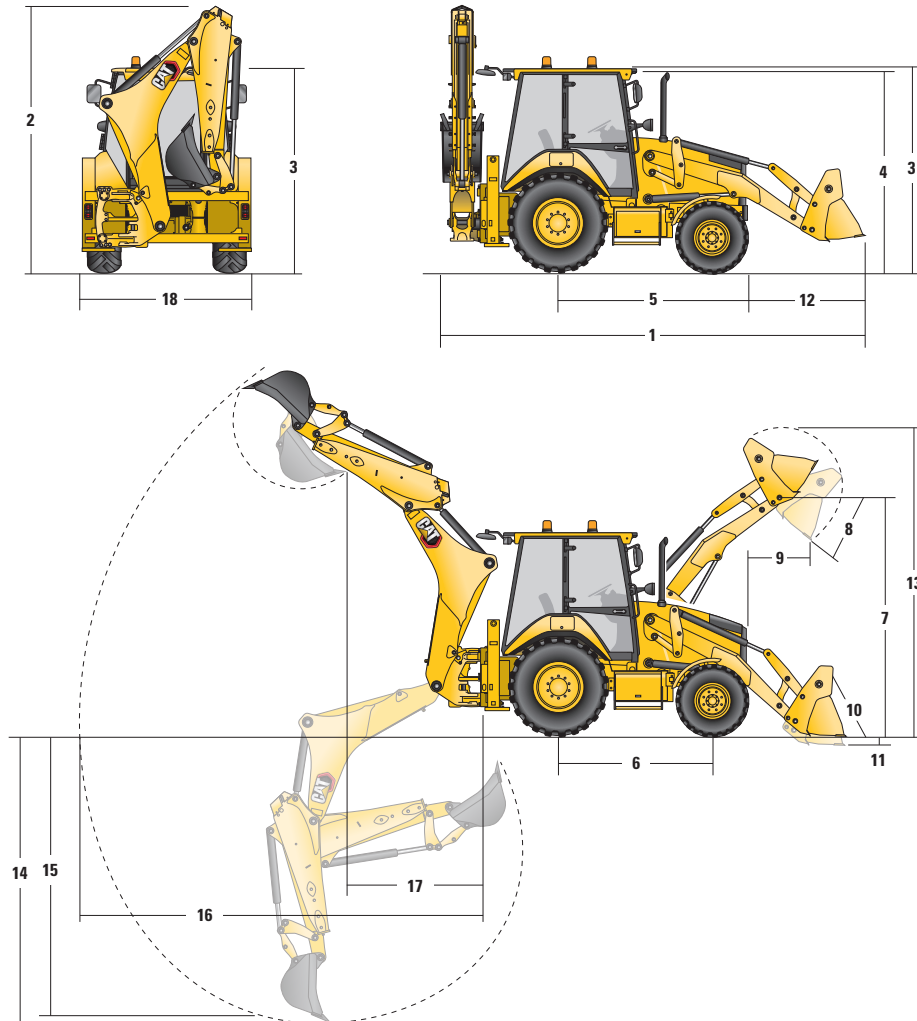
SERVICE REFILL CAPACITIES	
Cooling System with A/C	18 L
Fuel Tank	160 L
Engine Oil with Filter	9 L
Diesel Exhaust Fluid	19 L
Transmission (Powershift/Autoshift)	19 L
Rear Axle	16 L
Planetaries	1.7 L
Front Axle	11 L
Planetaries	0.7 L
Hydraulic System	95 L
Hydraulic Tank	42 L

(continued on next page)

TECHNICAL SPECIFICATIONS

See cat.com for complete specifications.

MACHINE DIMENSIONS



	Parallel Lift Loader			Parallel Lift Loader with QC	
	GP – 1.0 m ³	MP – 1.03 m ³	MP with Forks – 1.03 m ³	GP/QC – 1.0 m ³	MP/QC – 1.03 m ³
1 Overall Length in Rooding Position	5763 mm	5744 mm	5744 mm	5847 mm	5760 mm
Overall Transportation Length	5775 mm	5731 mm	5731 mm	5884 mm	5778 mm
2 Overall Transportation Height	3806 mm	3806 mm	3806 mm	3806 mm	3806 mm
Overall Width	2352 mm	2352 mm	2352 mm	2352 mm	2352 mm
Overall Width (Narrow Frame)	2241mm	2241mm	2241mm	2241mm	2241mm
3 Height to Top of Cab/Canopy	2822 mm	2822 mm	2822 mm	2822 mm	2822 mm
4 Height to Top of Exhaust Stack	2715 mm	2715 mm	2715 mm	2715 mm	2715 mm
5 Rear Axle Centerline to Front Grill	2705 mm	2705 mm	2705 mm	2705 mm	2705 mm
6 Wheelbase 2WD/AWD	2200 mm	2200 mm	2200 mm	2200 mm	2200 mm

Dimensions and performance specifications shown are for machines equipped with 340/80-18 and 440/80-28 tires, standard cab, 4.3 m standard stick with 600 mm standard duty bucket, and 1.03 m³ MP loader bucket and standard equipment unless otherwise specified.

TECHNICAL SPECIFICATIONS

See cat.com for complete specifications.

LOADER BUCKET DIMENSIONS AND PERFORMANCE					
	Parallel Lift Loader			Parallel Lift Loader with QC	
	GP – 1.0 m ³	MP – 1.03 m ³	MP with Forks – 1.03 m ³	GP/QC – 1.0 m ³	MP/QC – 1.03 m ³
Capacity (SAE rated)	1.0 m ³	1.03 m ³	1.03 m ³	1.03 m ³	1.03 m ³
Width	2406 mm	2406 mm	2406 mm	2406 mm	2406 mm
Lift Capacity at Maximum Height	3728 kg	3488 kg	3303 kg	3509 kg	3278 kg
Lift Breakout Force	54 791 N	53 252 N	51 536 N	51 669 N	50 841 N
Tilt Breakout Force	54 292 N	59 845 N	58 900 N	48 223 N	53 400 N
Tipping Load at Breakout Point	6695 kg	6674 kg	6518 kg	6157 kg	6339 kg
7 Maximum Hinge Pin Height	3462 mm	3462 mm	3462 mm	3462 mm	3462 mm
8 Dump Angle at Full Height	45°	45°	45°	45°	45°
Dump Height at Maximum Angle	2755 mm	2780 mm	2780 mm	2669 mm	2749 mm
9 Dump Reach at Maximum Angle	805 mm	732 mm	732 mm	838 mm	784 mm
10 Maximum Bucket Rollback at Ground Level	38°	39°	39°	39°	38°
11 Digging Depth	99 mm	132 mm	132 mm	137 mm	118 mm
Maximum Grading Angle	113°	116°	116°	112°	114°
12 Grill to Bucket Cutting Edge, Carry Position	1488 mm	1471 mm	1471 mm	1571 mm	1487 mm
13 Maximum Operating Height	4328 mm	4365 mm	4365 mm	4361 mm	4407 mm
Weight (does not include teeth)	427.5 kg	611.2 kg	705 kg	459 kg	697 kg

BACKHOE DIMENSIONS AND PERFORMANCE					
	Standard Stick – 4.3 m	E-stick Retracted – 4.3 m	E-stick Extended – 4.3 m	E-stick Retracted – 4.9 m	E-stick Extended – 4.9 m
14 Digging Depth, SAE Maximum	4298 mm	4301 mm	5292 mm	4636 mm	5665 mm
Digging Depth, Manufacturer's Maximum	4778 mm	4782 mm	5700 mm	5201 mm	6169 mm
15 Digging Depth, 2400 mm Flat Bottom	3915 mm	3919 mm	4987 mm	4293 mm	5373 mm
Digging Depth, 600 mm Flat Bottom	4255 mm	4259 mm	5254 mm	4611 mm	5632 mm
Digging Depth, 600 mm Flat Bottom, Manufacturer's	4753 mm	4758 mm	5700 mm	5164 mm	6150 mm
Reach from Rear Axle Centerline at Ground Line	6741 mm	6746 mm	7672 mm	7218 mm	8169 mm
16 Reach from Swing Pivot at Ground Line	5651 mm	5656 mm	6582 mm	6128 mm	7079 mm
Maximum Operating Height	5665 mm	5666 mm	6265 mm	6231 mm	6956 mm
Loading Height	3991 mm	4000 mm	4599 mm	4555 mm	5280 mm
17 Loading Reach	1690 mm	1639 mm	2501 mm	1559 mm	2319 mm
Swing Arc	180°	180°	180°	180°	180°
Bucket Rotation	205°	205°	205°	205°	205°
18 Stabilizer Overall Width	2352 mm	2352 mm	2352 mm	2352 mm	2352 mm
Bucket Dig Force	63 447 N	63 419 N	63 419 N	63 427 N	63 427 N
Stick Dig Force	42 835 N	43 548 N	31 743 N	47 251 N	35 180 N

STANDARD & OPTIONAL EQUIPMENT

Standard and optional equipment may vary. Consult your Cat dealer for details.

CAB ROPS AND FOPS	STANDARD	OPTIONAL
Cab, Standard	•	
Cab, Deluxe		•
TIRES/STEERING/BRAKES	STANDARD	OPTIONAL
All Wheel Drive	•	
100% Differential Lock	•	
Hydraulic Boosted Brakes	•	
Tires 26 inch	•	
Tires 28 inch		•
ENGINE/TRANSMISSION	STANDARD	OPTIONAL
Engine, 3054C 74.5 kW	•	
Engine, C4.4 74.5 kW		•
Battery, 750 CCA, Standard	•	
Battery, 750 CCA, Heavy Duty		•
Hinged Radiator Pack	•	
Eco Mode	•	
Standard Mode	•	
Engine Block Heater		•
Transmission Neutralizer	•	
Transmission, Four Speed Powershift	•	
Transmission, Six Speed Automatic		•
Transmission, Six Speed with Lock-Up Torque Converter		•
CONTROLS	STANDARD	OPTIONAL
Controls, Pilot Hoe Joysticks	•	
Controls, EH Loader Joystick	•	
Pattern Selector (ISO/SAE)	•	
Power Steering, Hydrostatic	•	
ELECTRICAL	STANDARD	OPTIONAL
Product Link Cellular	•	
Product Link Satellite		•
Reversing Alarm	•	
Stabilizer Alarm		•
Beacon, Rotating		•
Beacon, Strobe		•

HYDRAULICS	STANDARD	OPTIONAL
Variable Displacement Piston Pump	•	
Hydraulic Quick Disconnects		•
Side Shift Lock	•	
Hydraulic Oil Cooler	•	
Hydraulic Lines, One Way		•
Hydraulic Lines, Two Way		•
Loader Kickout, Float	•	
Loader Kickout, Return to Dig	•	
Powered Side Shift		•
Ride Control		•
Continuous Flow		•
Programmable Auxiliary Flow	•	
BOOMS, STICKS AND LINKAGES	STANDARD	OPTIONAL
Stick Standard, 4.3 m	•	
Stick Extending, 4.3 m		•
Stick Extending, 4.9 m		•
Hoe Quick Coupler, Mechanical		•
Hoe Quick Coupler, Hydraulic		•
Loader Quick Coupler, Hydraulic		•
Transport Lock, Swing	•	
Transport Lock, Boom	•	
OTHER ATTACHMENTS	STANDARD	OPTIONAL
Counterweight, 115 kg		•
Counterweight, 240 kg		•
Counterweight, 460 kg		•
Front Fenders		•
Street Pads, Stabilizers		•
External Tool Box	•	
Transport Tie Downs	•	

Not all features are available in all regions. Please check with your local Cat dealer for specific offering availability in your area.

For additional information, refer to the Technical Specifications brochure available at www.cat.com or your Cat dealer.

For more complete information on Cat products, dealer services and industry solutions, visit us on the web at www.cat.com

AEHQ8363
(AME, CIS, ANZP, SE Asia)

© 2021 Caterpillar. All Rights Reserved.

Materials and specifications are subject to change without notice. Featured machines in photos may include additional equipment. See your Cat dealer for available options.

CAT, CATERPILLAR, LET'S DO THE WORK, their respective logos, "Caterpillar Corporate Yellow," the "Power Edge" and Cat "Modern Hex" trade dress as well as corporate and product identity used herein, are trademarks of Caterpillar and may not be used without permission.
www.cat.com www.caterpillar.com

