

CAT® APP RELEASE NOTES iOS_2.28 | ANDROID_2.28

June 2021

CAT® APP

24/7 EQUIPMENT MANAGEMENT ON-THE-GO

Efficient equipment management starts with the Cat App. Track the location and health of your equipment, order service and parts, and activate telematics devices directly from your mobile device. Staying on top of your fleet 24/7 has never been easier.

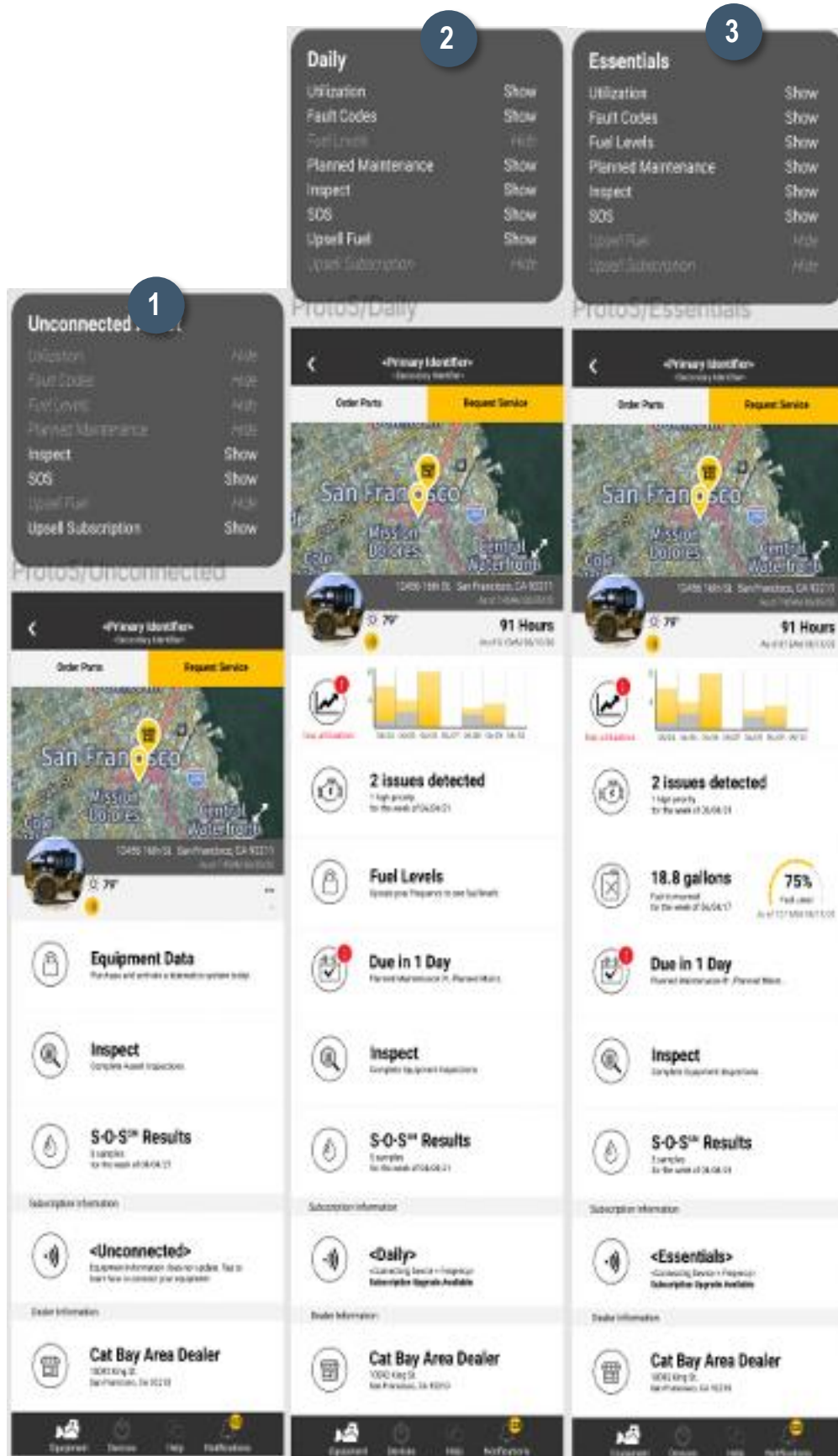
WHAT'S NEW

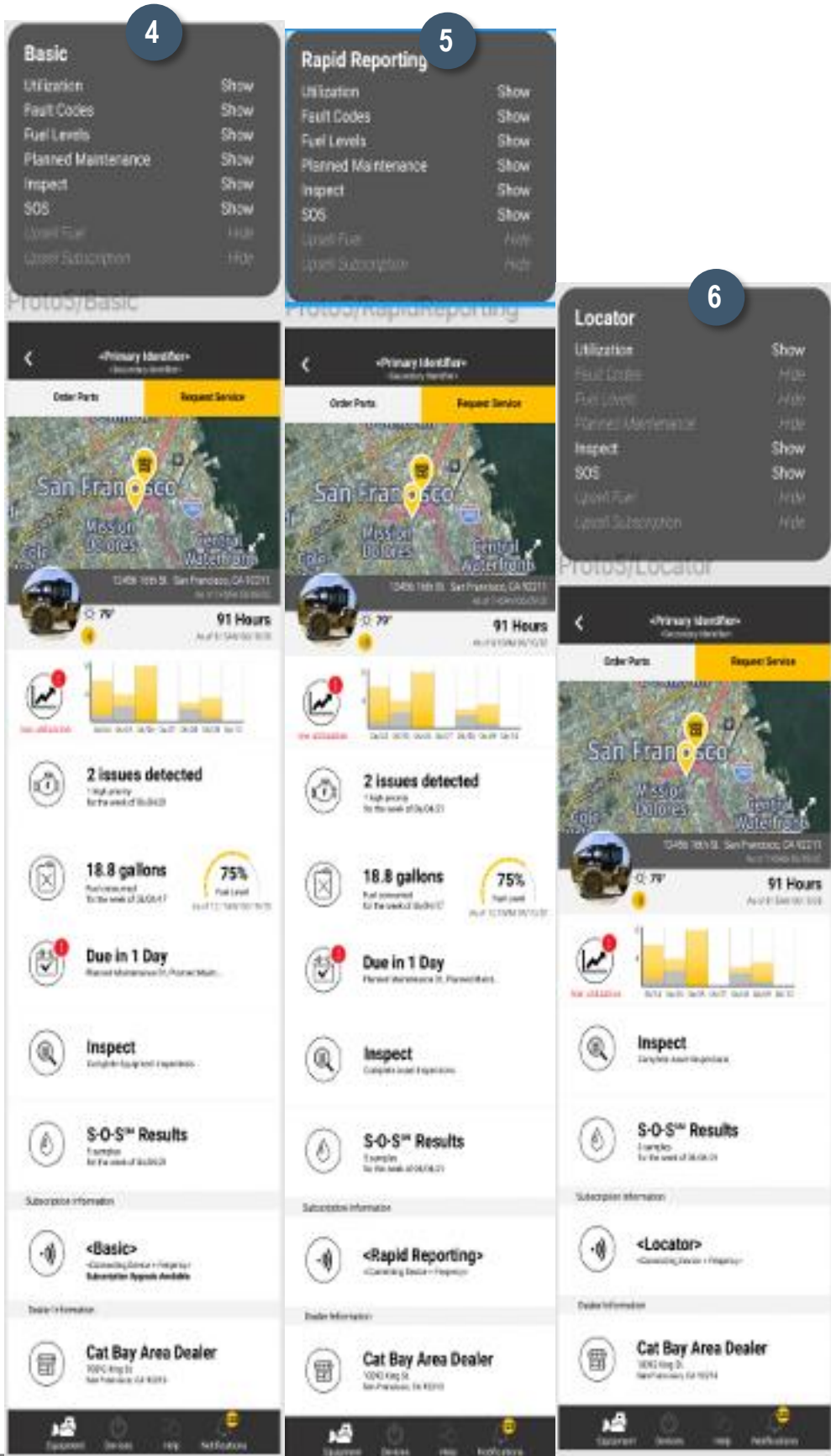
- Updating the Non-standard subscription name and logic to reflect more accurately
- Updating the Asset Detail tile display logic
- Bug fixes and performance improvements

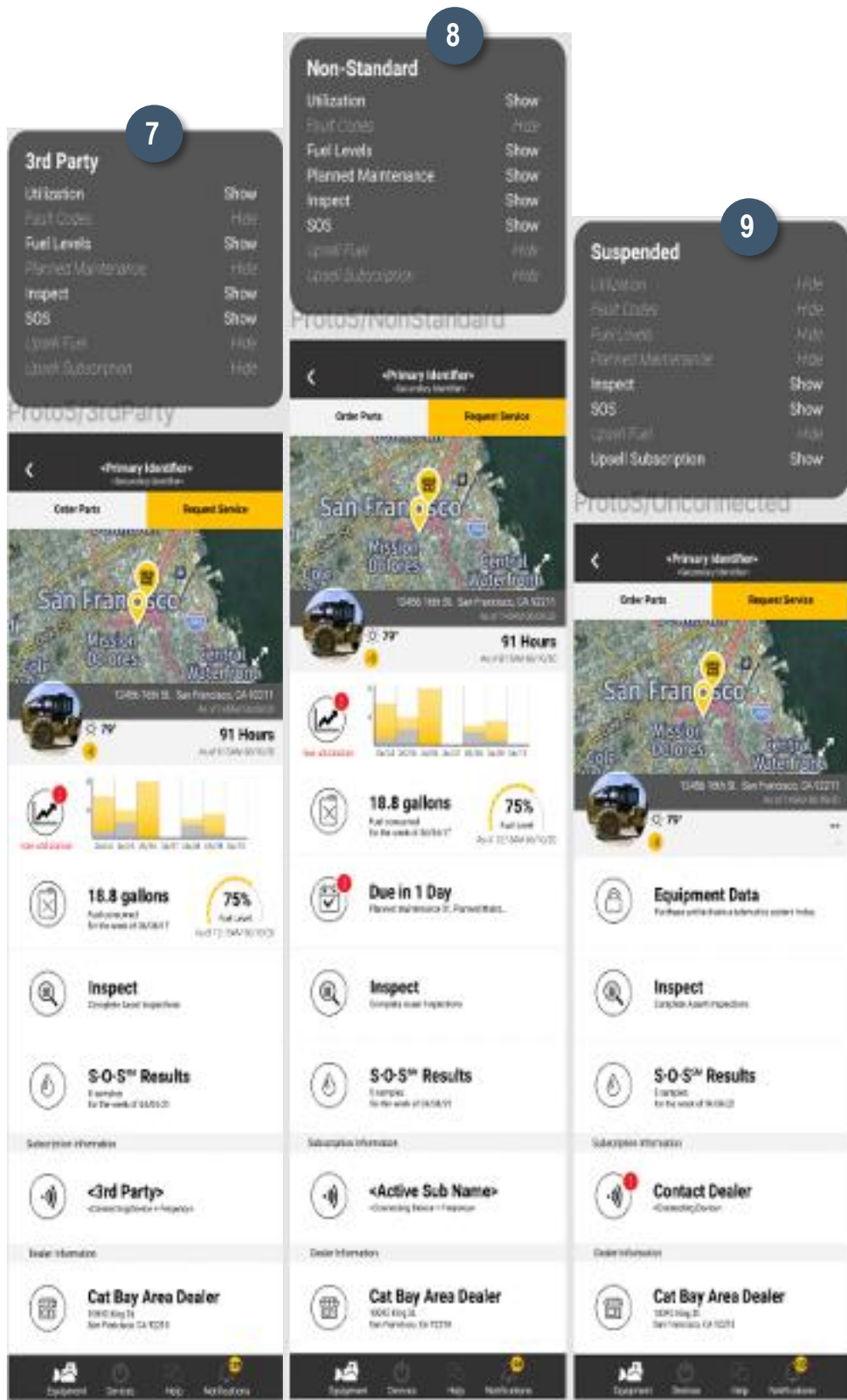
NEW FEATURES

Subscription types and data tiles / display logic

1. Unconnected
2. Daily
3. Essentials
4. Basic
5. Rapid Reporting
6. Locator
7. 3rd Party
8. Non-Standard
 - a. Includes Manual Maintenance
9. Suspended







BUG FIXES

We've addressed the following bug fixes to enhance the overall user experience:

FIX DETAILS	VERSION	BUG NUMBER
Android - asset details - tile header color	2.28	214962
Android - Device_GetHardware_Android_values are not pre populating	2.28	384686
Android - Device_HRF_Android_ "Shipping address" text is present instead of "Please enter your address"	2.28	384686
Android - Device_HRF_Android_User is taken to Device Tab instead of Available assets page	2.28	384686
Android - Login - login failed button unexpected color	2.28	214962
Android - order parts button wrong color	2.28	214962
Android - Request Service missing grey area	2.28	214962
iOS - Assets not updating after pull down or quit and Relaunch	2.28	214962
iOS - Assets not updating after pull down or quit and Relaunch - Copy	2.28	417926
iOS - CreateAccount_IOS_ 'Yellow Checkmark' is displayed even after clearing the Country field	2.28	384686
iOS - DCV - name search does not allow special characters	2.28	417926